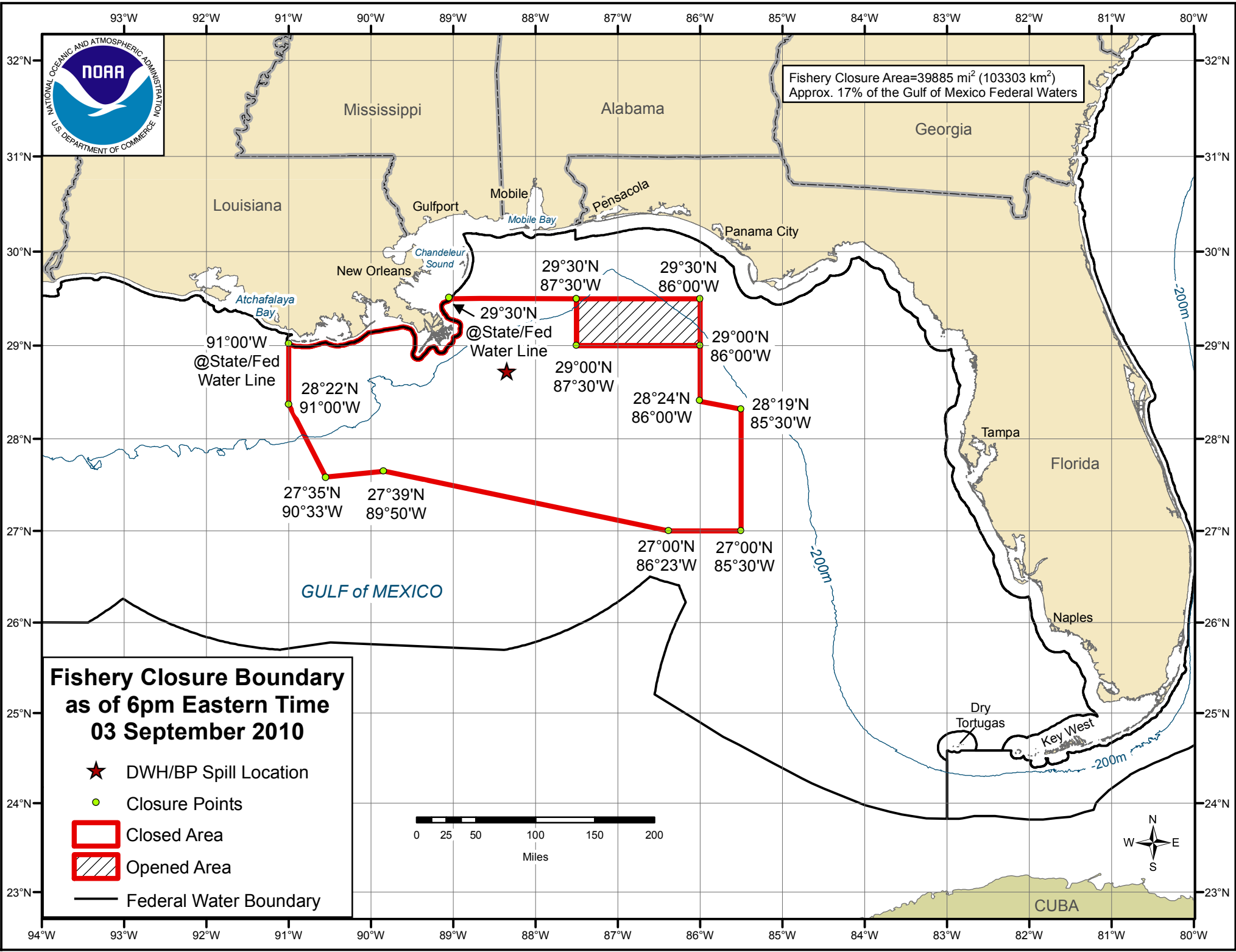


Fishery Closure Area=39885 mi<sup>2</sup> (103303 km<sup>2</sup>)  
Approx. 17% of the Gulf of Mexico Federal Waters



### Fishery Closure Boundary as of 6pm Eastern Time 03 September 2010

- ★ DWH/BP Spill Location
- Closure Points
- ▭ Closed Area
- ▨ Opened Area
- Federal Water Boundary

