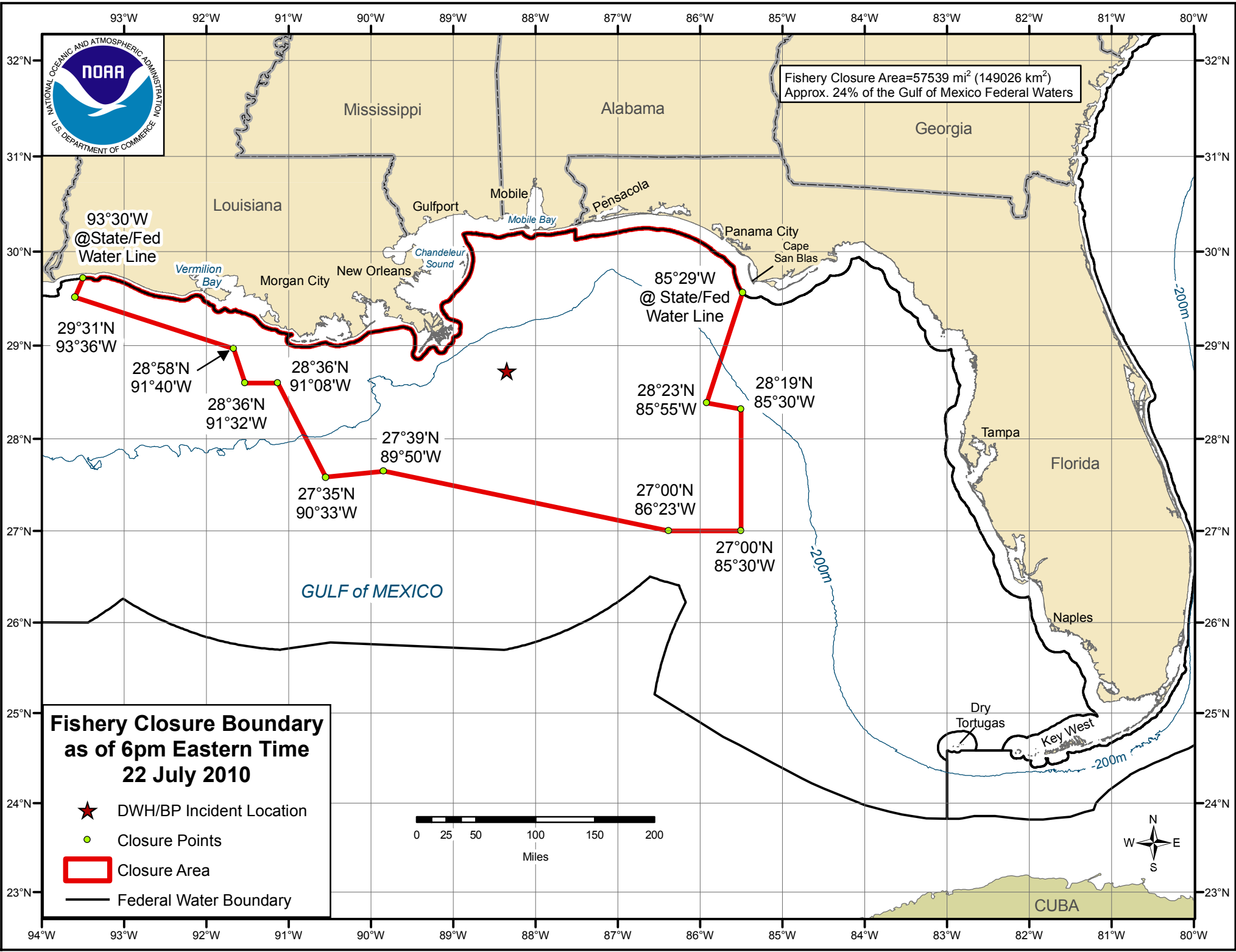




Fishery Closure Area=57539 mi<sup>2</sup> (149026 km<sup>2</sup>)  
Approx. 24% of the Gulf of Mexico Federal Waters



**Fishery Closure Boundary  
as of 6pm Eastern Time  
22 July 2010**

- ★ DWH/BP Incident Location
- Closure Points
- ▭ Closure Area
- Federal Water Boundary



93°30'W  
@State/Fed  
Water Line

85°29'W  
@ State/Fed  
Water Line

28°58'N  
91°40'W

28°36'N  
91°32'W

28°36'N  
91°08'W

27°39'N  
89°50'W

27°35'N  
90°33'W

28°23'N  
85°55'W

28°19'N  
85°30'W

27°00'N  
86°23'W

27°00'N  
85°30'W

GULF of MEXICO

CUBA