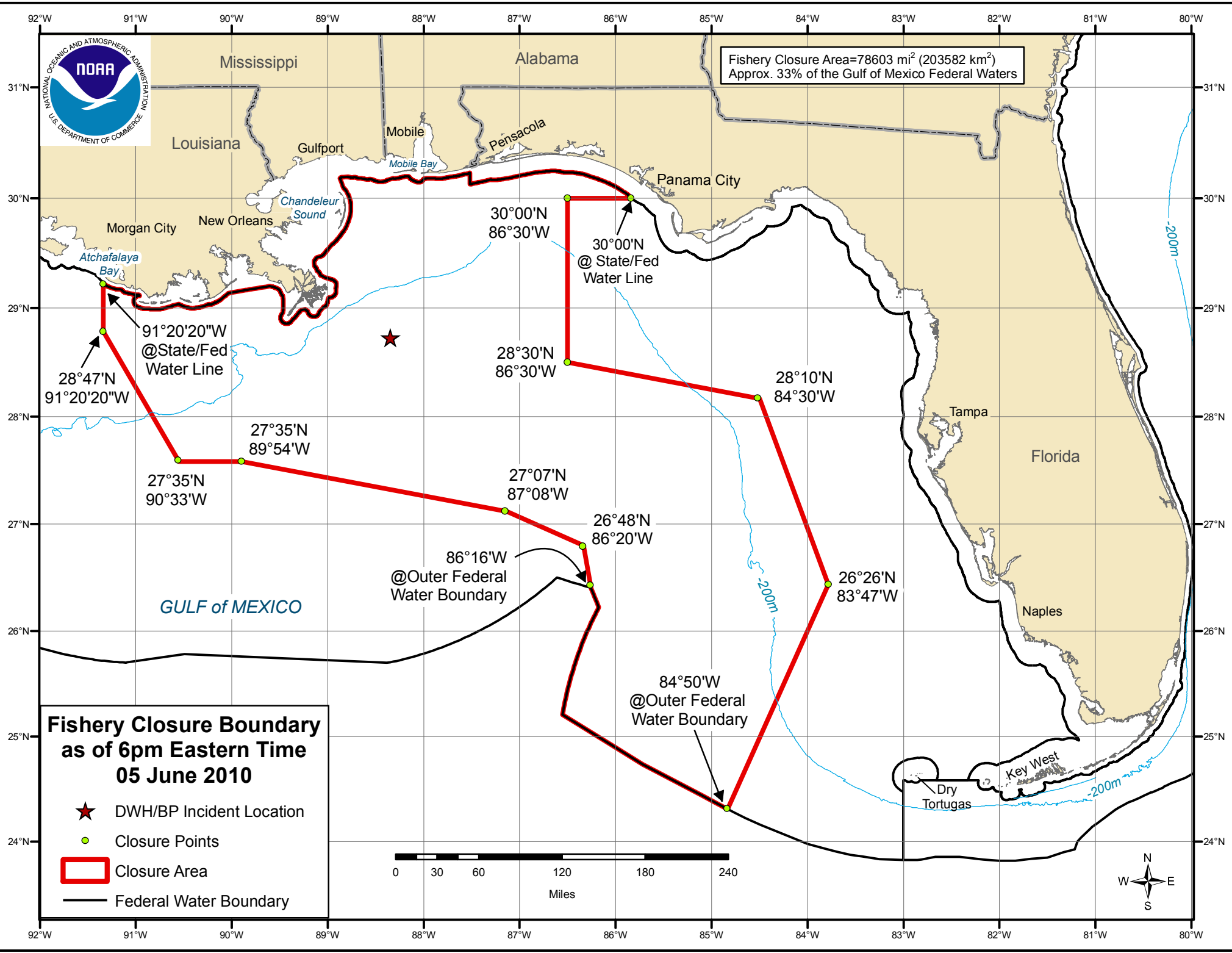




Fishery Closure Area=78603 mi² (203582 km²)
Approx. 33% of the Gulf of Mexico Federal Waters



**Fishery Closure Boundary
as of 6pm Eastern Time
05 June 2010**

- ★ DWH/BP Incident Location
- Closure Points
- ▭ Closure Area
- Federal Water Boundary

