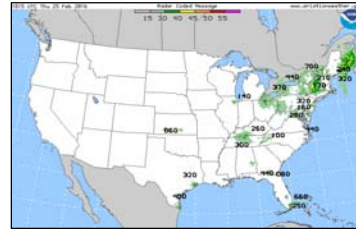


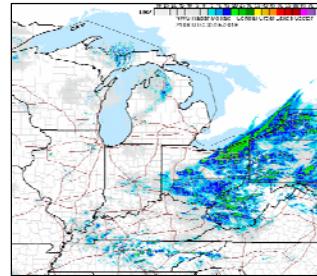
Title: Weather Satellite Ephemerides
URL: <http://celestrak.com/NORAD/elements/weather.txt>
GOES-N fn ephtwous.txt
GOES-R fn Z_NOXX10KWBCddhmm_C_KWIN_yyyyMMddhhmss_nnnnn-4-EPHTWOUS.TXT
 "Z" Originating center local product identifier
 T1 N - Notices
 T2 O - METNO/WIFMA
 A1A2 XX - For use when other designators are not appropriate
 ii 10 - (arbitrary)
 Pri 4
Note * Used together with NORAD's SGP4/SDP4 orbital model to determine the position and velocity of the named satellite.

METEOSAT-7
 1 24932U 97049B 16062.50875964 ...
 2 24932 10.0557 41.6922 0001990 ...
 NOAA 15
 1 25338U 98030A 16062.54962326 ...
 2 25338 98.7829 66.4887 0011450 ...
 METEOSAT-8 (MSG-1)
 1 27509U 02040B 16062.14401054 ...
 2 27509 4.0124 60.1514 0001744 ...
 KALPANA-1 (METSAT 1)
 :

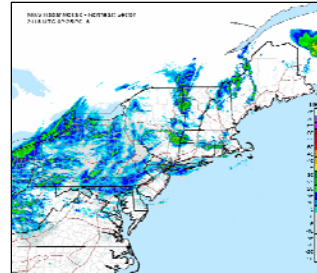
Title: US Radar Cloud Tops
URL: http://aviationweather.gov/data/obs/radar/rcm_sm_tops.gif
GOES-N fn radallus.gif
GOES-R fn Z_QATA00KWBCddhmm_C_KWIN_yyyyMMddhhmss_nnnnn-3-RADALLUS.GIF
 "Z" Originating center local product identifier
 T1 Q - Pictorial information regional (Binary coded)
 T2 A - Radar data
 A1 T - 45°W - 180° northern hemisphere
 A2 A - Analysis (00 hour)
 ii 00 - Entire atmosphere (eg precipitable water)
 Pri 3



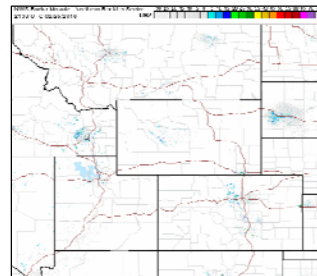
Title: US Radar Mosaic - Great Lakes Sector [NWS]
URL: <http://radar.weather.gov/Conus/RadarImg/centgrtlakes.gif>
GOES-N fn radgrtlk.gif
GOES-R fn Z_QATA00KWBCddhmm_C_KWIN_yyyyMMddhhmss_nnnnn-3-RADGRTLK.GIF
 "Z" Originating center local product identifier
 T1 Q - Pictorial information regional (Binary coded)
 T2 A - Radar data
 A1 T - 45°W - 180° northern hemisphere *GL - US Great Lakes*
 A2 A - Analysis (00 hour)
 ii 00 - Entire atmosphere (eg precipitable water)
 Pri 3



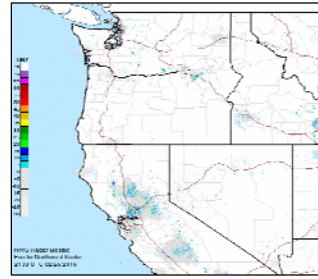
Title: US Radar Mosaic - Northeast Sector [NWS]
URL: <http://radar.weather.gov/Conus/RadarImg/northeast.gif>
GOES-N fn radnthes.gif
GOES-R fn Z_QATA00KWBCddhmm_C_KWIN_yyyyMMddhhmss_nnnnn-3-RADNTHE.GIF
 "Z" Originating center local product identifier
 T1 Q - Pictorial information regional (Binary coded)
 T2 A - Radar data
 A1 T - 45°W - 180° northern hemisphere *NE - US Northeast*
 A2 A - Analysis (00 hour)
 ii 00 - Entire atmosphere (eg precipitable water)
 Pri 3



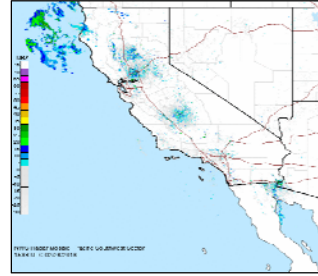
Title: US Radar Mosaic - Northern Rockies Sector [NWS]
URL: <http://radar.weather.gov/Conus/RadarImg/northrockies.gif>
GOES-N fn radrcknt.gif
GOES-R fn Z_QATA00KWBCddhmm_C_KWIN_yyyyMMddhhmss_nnnnn-3-RADRCKNT.GIF
 "Z" Originating center local product identifier
 T1 Q - Pictorial information regional (Binary coded)
 T2 A - Radar data
 A1 T - 45°W - 180° northern hemisphere *NR - US Northern Rockies*
 A2 A - Analysis (00 hour)
 ii 00 - Entire atmosphere (eg precipitable water)
 Pri 3



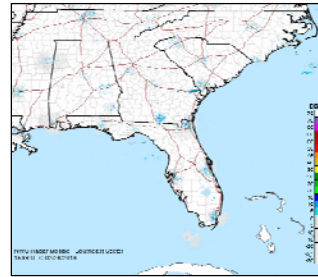
Title: US Radar Mosaic - Pacific Northwest Sector [NWS]
URL: <http://radar.weather.gov/Conus/RadarImg/pacnorthwest.gif>
GOES-N fn radpacnw.gif
GOES-R fn Z_QATA00KWBCddhmm_C_KWIN_yyyyMMddhhmmss_nnnnnn-3-RADPACNW.GIF
 "Z" Originating center local product identifier
 T1 Q - Pictorial information regional (Binary coded)
 T2 A - Radar data
 A1 T - 45°W - 180° northern hemisphere **NW - US Northwest**
 A2 A - Analysis (00 hour)
 ii 00 - Entire atmosphere (eg precipitable water)
 Pri 3



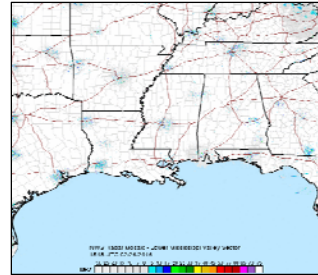
Title: US Radar Mosaic - Pacific Southwest Sector [NWS]
URL: <http://radar.weather.gov/Conus/RadarImg/pacsouthwest.gif>
GOES-N fn radpacsw.gif
GOES-R fn Z_QATA00KWBCddhmm_C_KWIN_yyyyMMddhhmmss_nnnnnn-3-RADPACSW.GIF
 "Z" Originating center local product identifier
 T1 Q - Pictorial information regional (Binary coded)
 T2 A - Radar data
 A1 T - 45°W - 180° northern hemisphere **SW - US Southwest**
 A2 A - Analysis (00 hour)
 ii 00 - Entire atmosphere (eg precipitable water)
 Pri 3



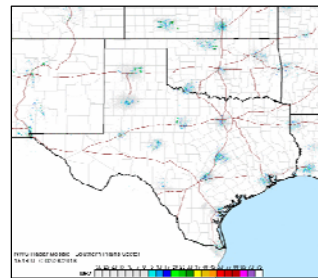
Title: US Radar Mosaic - Southeast Sector [NWS]
URL: <http://radar.weather.gov/Conus/RadarImg/southeast.gif>
GOES-N fn radsthes.gif
GOES-R fn Z_QATA00KWBCddhmm_C_KWIN_yyyyMMddhhmmss_nnnnnn-3-RADSTHES.GIF
 "Z" Originating center local product identifier
 T1 Q - Pictorial information regional (Binary coded)
 T2 A - Radar data
 A1 T - 45°W - 180° northern hemisphere **SE - US Southeast**
 A2 A - Analysis (00 hour)
 ii 00 - Entire atmosphere (eg precipitable water)
 Pri 3



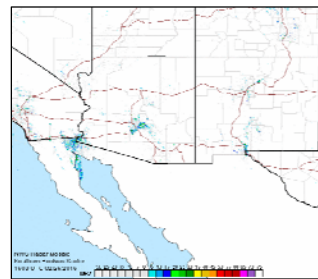
Title: US Radar Mosaic - Lower Mississippi Valley Sector [NWS]
URL: <http://radar.weather.gov/Conus/RadarImg/southmissvly.gif>
GOES-N fn radsmsvy.gif
GOES-R fn Z_QATA00KWBCddhmm_C_KWIN_yyyyMMddhhmmss_nnnnnn-3-RADSMSVY.GIF
 "Z" Originating center local product identifier
 T1 Q - Pictorial information regional (Binary coded)
 T2 A - Radar data
 A1 T - 45°W - 180° northern hemisphere **SV - US Southern Miss Valley**
 A2 A - Analysis (00 hour)
 ii 00 - Entire atmosphere (eg precipitable water)
 Pri 3



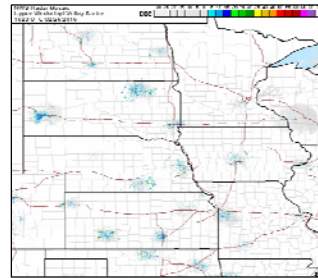
Title: US Radar Mosaic - Southern Plains Sector [NWS]
URL: <http://radar.weather.gov/Conus/RadarImg/southplains.gif>
GOES-N fn radsthpl.gif
GOES-R fn Z_QATA00KWBCddhmm_C_KWIN_yyyyMMddhhmmss_nnnnnn-3-RADSTHPL.GIF
 "Z" Originating center local product identifier
 T1 Q - Pictorial information regional (Binary coded)
 T2 A - Radar data
 A1 T - 45°W - 180° northern hemisphere **SP - US Southern Plains**
 A2 A - Analysis (00 hour)
 ii 00 - Entire atmosphere (eg precipitable water)
 Pri 3



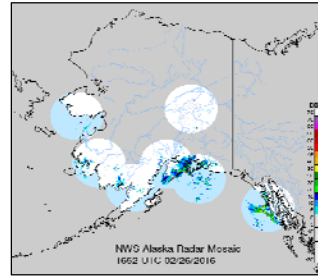
Title: US Radar Mosaic - Southern Rockies Sector [NWS]
URL: <http://radar.weather.gov/Conus/RadarImg/southrockies.gif>
GOES-N fn radrckst.gif
GOES-R fn Z_QATA00KWBCddhmm_C_KWIN_yyyyMMddhhmmss_nnnnnn-3-RADRCKST.GIF
 "Z" Originating center local product identifier
 T1 Q - Pictorial information regional (Binary coded)
 T2 A - Radar data
 A1 T - 45°W - 180° northern hemisphere **SR - US Southern Rockies**
 A2 A - Analysis (00 hour)
 ii 00 - Entire atmosphere (eg precipitable water)
 Pri 3



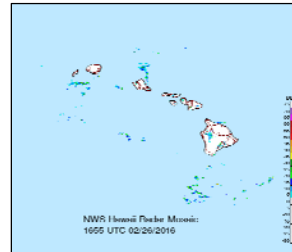
Title: US Radar Mosaic - Upper Mississippi Valley Sector [NWS]
URL: <http://radar.weather.gov/Conus/RadarImg/uppermissvly.gif>
GOES-N fn radumsvy.gif
GOES-R fn Z_QATA00KWBCddhmm_C_KWIN_yyyyMMddhhmmss_nnnnnn-3-RADUMSVY.GIF
 "Z" Originating center local product identifier
 T1 Q - Pictorial information regional (Binary coded)
 T2 A - Radar data
 A1 T - 45°W - 180° northern hemisphere *UM - US Upper Miss Valley*
 A2 A - Analysis (00 hour)
 ii 00 - Entire atmosphere (eg precipitable water)
 Pri 3



Title: US Radar Mosaic - Alaska [NWS]
URL: <http://radar.weather.gov/ridge/Conus/RadarImg/alaska.gif>
GOES-N fn radallak.gif
GOES-R fn Z_QABA00KWBCddhmm_C_KWIN_yyyyMMddhhmmss_nnnnnn-3-RADALLAK.GIF
 "Z" Originating center local product identifier
 T1 Q - Pictorial information regional (Binary coded)
 T2 A - Radar data
 A1 B - 90°W - 180° northern hemisphere
 A2 A - Analysis (00 hour)
 ii 00 - Entire atmosphere (eg precipitable water)
 Pri 3



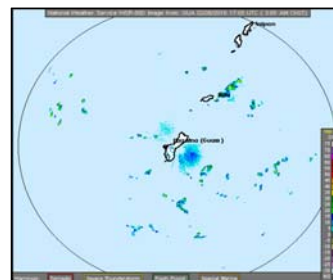
Title: Hawaii Radar Mosaic [NWS]
URL: <http://radar.weather.gov/ridge/Conus/RadarImg/hawaii.gif>
GOES-N fn radallhi.gif
GOES-R fn Z_QAFA00KWBCddhmm_C_KWIN_yyyyMMddhhmmss_nnnnnn-3-RADALLHI.GIF
 "Z" Originating center local product identifier
 T1 Q - Pictorial information regional (Binary coded)
 T2 A - Radar data
 A1 F - 90°W - 180° tropical belt
 A2 A - Analysis (00 hour)
 ii 00 - Entire atmosphere (eg precipitable water)
 Pri 3



Title: US Radar Mosaic [NWS]
URL: http://radar.weather.gov/ridge/Conus/RadarImg/latest_Small.gif
GOES-N fn radrefus.gif
GOES-R fn Z_QATA00KWBCddhmm_C_KWIN_yyyyMMddhhmmss_nnnnnn-3-RADREFUS.GIF
 "Z" Originating center local product identifier
 T1 Q - Pictorial information regional (Binary coded)
 T2 A - Radar data
 A1 T - 45°W - 180° northern hemisphere
 A2 A - Analysis (00 hour)
 ii 00 - Entire atmosphere (eg precipitable water)
 Pri 3



Title: National Weather Service WSR-88D Image from: GUA
URL: http://radar.weather.gov/ridge/lite/NOR/GUA_0.png
GOES-N fn radallgu.png
GOES-R fn Z_QAGA00PGUMddhmm_C_KWIN_yyyyMMddhhmmss_nnnnnn-3-RADALLGU.GIF
 "Z" Originating center local product identifier
 T1 Q - Pictorial information regional (Binary coded)
 T2 A - Radar data
 A1 G - 180° - 90°E tropical belt
 A2 A - Analysis (00 hour)
 ii 00 - Entire atmosphere (eg precipitable water)
 Pri 3



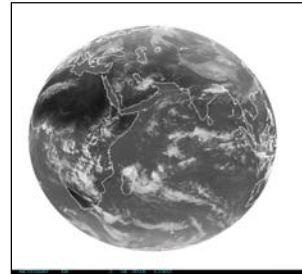
Title: National Weather Service WSR-88D Image from: JUA
URL: http://radar.weather.gov/ridge/lite/NOR/JUA_0.png
GOES-N fn radallpr.png
GOES-R fn Z_QAEA00TJSJddhmm_C_KWIN_yyyyMMddhhmmss_nnnnnn-3-RADALLPR.PNG
 "Z" Originating center local product identifier
 T1 Q - Pictorial information regional (Binary coded)
 T2 A - Radar data
 A1 E - 0° - 90°W tropical belt
 A2 A - Analysis (00 hour)
 ii 00 - Entire atmosphere (eg precipitable water)
 Pri 3



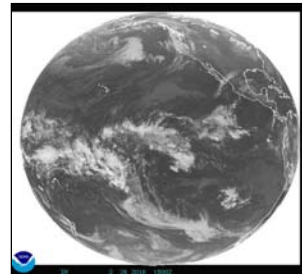
Title: NWS Day 3-7 U.S. Hazards Outlook
URL: http://www.cpc.ncep.noaa.gov/products/predictions/threats/hazards_d3_7_contours.png
GOES-N fn ushzthrt.png
GOES-R fn Z_QGTK98KWBCddhmm_C_KWIN_yyyyMMddhhmmss_nnnnnn-4-USHZTHRT.PNG
 "Z" Originating center local product identifier
 T1 Q - Pictorial information regional (Binary coded)
 T2 G - Significant weather
 A1 T - 45°W - 180° northern hemisphere
 A2 K - 72 hours forecast
 ii 98 - Air properties for the Earth's surface
 Pri 4



Title: East Africa / West Indian Ocean IR [METEOSAT]
URL: <http://www.goes.noaa.gov/FULLDISK/GIIR.JPG> 00 E 120E
GOES-N fn indcirus.jpg
GOES-R fn Z_EIIO00KWBCddhmm_C_KWIN_yyyyMMddhhmmss_nnnnnn-4-INDCIRUS.PNG
 "Z" Originating center local product identifier
 T1 E - Satellite imagery
 T2 I - Infrared
 A1A2 IO - Indian Ocean area
 ii 00 - (arbitrary)
 Pri 4



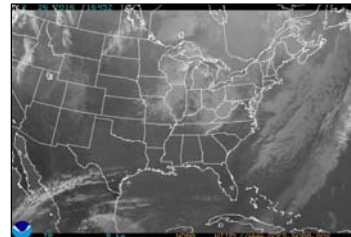
Title: Eastern Pacific Ocean area IR [NOAA]
URL: <http://www.goes.noaa.gov/FULLDISK/GWIR.JPG>
GOES-N fn g10fdius.jpg
GOES-R fn Z_EIPZ00KWBCddhmm_C_KWIN_yyyyMMddhhmmss_nnnnnn-4-G10FDIUS.PNG
 "Z" Originating center local product identifier
 T1 E - Satellite imagery
 T2 I - Infrared
 A1A2 PZ - Eastern Pacific Area
 ii 00 - (arbitrary)
 Pri 4



Title: Western North Pacific Area IR [MTSAT]
URL: <http://www.goes.noaa.gov/dimg/jma/fd/ir4/10.gif>
GOES-N fn gms008ja.jpg
GOES-R fn Z_EIPQ00KWBCddhmm_C_KWIN_yyyyMMddhhmmss_nnnnnn-4-GMS008JA.GIF
 "Z" Originating center local product identifier
 T1 E - Satellite imagery
 T2 I - Infrared
 A1A2 PQ - Western North Pacific area
 ii 00 - (arbitrary)
 Pri 4



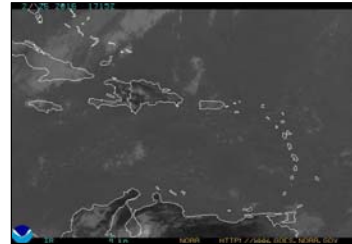
Title: United States (Central and Eastern) IR 8km [NOAA]
URL: <http://www.goes.noaa.gov/GIFS/ECIR.JPG>
GOES-N fn g08cirus.jpg
GOES-R fn Z_EINA00KWBCddhmm_C_KWIN_yyyyMMddhhmmss_nnnnnn-4-G08CIRUS.PNG
 "Z" Originating center local product identifier
 T1 E - Satellite imagery
 T2 I - Infrared
 A1A2 NA - North America
 ii 00 - (arbitrary)
 Pri 4



Title: RA-IV Atlantic Hurricane Basin IR 8km [NOAA]
URL: <http://www.goes.noaa.gov/GIFS/HUIR.JPG>
GOES-N fn g08hurus.jpg
GOES-R fn Z_EINT00KWBCddhmm_C_KWIN_yyyyMMddhhmmss_nnnnnn-4-G08HURUS.PNG
 "Z" Originating center local product identifier
 T1 E - Satellite imagery
 T2 I - Infrared
 A1A2 NT - North Atlantic area
 ii 00 - (arbitrary)
 Pri 4



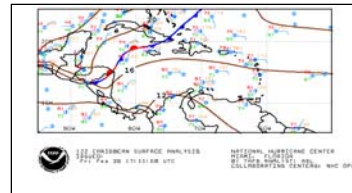
Title: Puerto Rico IR 4km [NOAA]
URL: <http://www.goes.noaa.gov/GIFS/PRIR.JPG>
GOES-N fn imgsjuvr.jpg
GOES-R fn Z_EIPU00KWBCddhmm_C_KWIN_yyyyMMddhhmmss_nnnnnn-4-IMGSJUPR.PNG
 "Z" Originating center local product identifier
 T1 E - Satellite imagery
 T2 I - Infrared
 A1A2 PU - Puerto Rico
 ii 00 - (arbitrary)
 Pri 4



Title: US West Coast IR 4km [NOAA]
URL: <http://www.goes.noaa.gov/GIFS/WCIR.JPG>
GOES-N fn g10cirus.jpg
GOES-R fn Z_EIUS00KWBCddhmm_C_KWIN_yyyyMMddhhmmss_nnnnnn-4-G10CIRUS.PNG
 "Z" Originating center local product identifier
 T1 E - Satellite imagery
 T2 I - Infrared
 A1A2 US - United States of America
 ii 00 - (arbitrary)
 Pri 4



Title: Caribbean Surface Analysis [NHC/NOAA]
URL: http://www.nhc.noaa.gov/tafb_latest/CAR_latest.gif
GOES-N fn CSA001us.gif
GOES-R fn Z_QYEA98KNHCddhmm_C_KWIN_yyyyMMddhhmmss_nnnnnn-4-CSA001US.GIF
 "Z" Originating center local product identifier
 T1 Q - Pictorial information regional (Binary coded)
 T2 Y - Observational plotted chart
 A1 E - 0°-90°W tropical belt
 A2 A - Analysis (00 hour)
 ii 98 - Air properties for the Earth's surface
 Pri 4



Title: US Convective Outlook Day 1 [SPC/NOAA]
URL: <http://www.spc.noaa.gov/products/outlook/day1otlk.gif>
GOES-N fn moddy1us.gif
GOES-R fn Z_QETI00KWNSddhmm_C_KWIN_yyyyMMddhhmmss_nnnnnn-4-MODDY1US.GIF
 "Z" Originating center local product identifier
 T1 Q - Pictorial information regional (Binary coded)
 T2 E - Precipitation **Precip vs Convection ???**
 A1 T - 45°W - 180° northern hemisphere
 A2 I - 24 hours forecast
 ii 00 - Entire atmosphere (eg precipitable water)
 Pri 4



Title: US Convective Outlook Day 2 [SPC/NOAA]
URL: <http://www.spc.noaa.gov/products/outlook/day2otlk.gif>
GOES-N fn moddy2us.gif
GOES-R fn Z_QETI00KWNSddhmm_C_KWIN_yyyyMMddhhmmss_nnnnnn-4-MODDY2US.GIF
 "Z" Originating center local product identifier
 T1 Q - Pictorial information regional (Binary coded)
 T2 E - Precipitation **Precip vs Convection ???**
 A1 T - 45°W - 180° northern hemisphere
 A2 I - 24 hours forecast
 ii 00 - Entire atmosphere (eg precipitable water)
 Pri 4



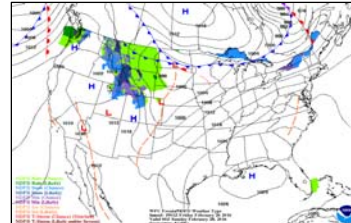
Title: US Watches, Warnings & Advisories
URL: <http://www.spc.noaa.gov/products/wwa/wwa.gif>
GOES-N fn imgwwaus.gif
GOES-R fn Z_QGTA98KWNSddhmm_C_KWIN_yyyyMMddhhmmss_nnnnnn-4-IMGWWAUS.GIF
 "Z" Originating center local product identifier
 T1 Q - Pictorial information regional (Binary coded)
 T2 G - Significant weather
 A1 T - 45°W - 180° northern hemisphere
 A2 A - Analysis (00 hour)
 ii 98 - Air properties for the Earth's surface
 Pri 4



Title: North American Sounder CAPE [NOAA/GOES]
URL: <http://www.ssd.noaa.gov/PS/PCPN/DATA/RT/NA/GCAPE/20.jpg>
GOES-N fn imgsndus.jpg
GOES-R fn Z_EYUS00KWBCddhmm_C_KWIN_yyyyMMddhhmmss_nnnnnn-4-IMGSNDUS.GIF
 "Z" Originating center local product identifier
 T1 E - Satellite imagery
 T2 Y - User specified: CAPE*
 A1A2 US - United States of America
 ii 00 - (arbitrary)
 Pri 4
 Note* CAPE = Convective Available Potential Energy



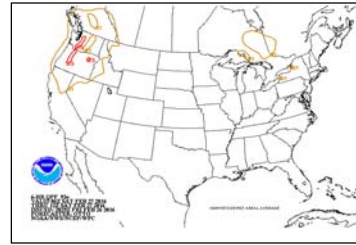
Title: WPC Fronts / NDFD Weather Type [NOAA]
URL: <http://www.wpc.ncep.noaa.gov/basicwx/96fndfd.gif>
GOES-N fn mod96fbw.gif
GOES-R fn Z_QGTI98KWNSddhmm_C_KWIN_yyyyMMddhhmmss_nnnnnn-4-MOD96FBW.GIF
 "Z" Originating center local product identifier
 T1 Q - Pictorial information regional (Binary coded)
 T2 G - Significant weather
 A1 T - 45°W - 180° northern hemisphere
 A2 I - 24 hours forecast
 ii 98 - Air properties for the Earth's surface
 Pri 4



Title: US Significant River Flood Outlook [NOAA]
URL: <http://www.wpc.ncep.noaa.gov/nationalfloodoutlook/finalfop.gif>
GOES-N fn gphj88us.gif
GOES-R fn Z_PGTO88KWNSddhmm_C_KWIN_yyyyMMddhhmmss_nnnnnn-4-GPHJ88US.GIF
 "Z" Originating center local product identifier
 T1 P - Pictorial information (Binary coded)
 T2 G - Significant weather
 A1 T - 45°W - 180° northern hemisphere
 A2 O - 120 hours forecast (5 days)
 ii 88 - Ground or water properties for the Earth's surface
 Pri 4



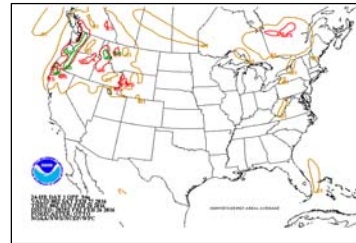
Title: US 6-Hour QPF 93e [WPC/NOAA]
URL: <http://www.wpc.ncep.noaa.gov/qpf/93ewbg.gif>
GOES-N fn mod93sus.gif
GOES-R fn Z_QETC00KWNHddhmm_C_KWIN_yyyyMMddhhmmss_nnnnnn-4-MOD93SUS.GIF
 "Z" Originating center local product identifier
 T1 Q - Pictorial information regional (Binary coded)
 T2 E - Precipitation
 A1 T - 45°W - 180° northern hemisphere
 A2 C - 6 hours forecast
 ii 00 - Entire atmosphere (eg precipitable water)
 Pri 4



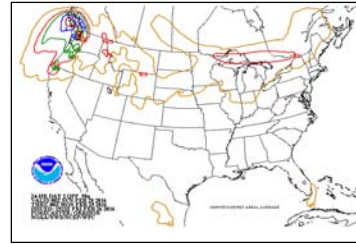
Title: US Day 1 Excessive Rainfall Outlook [WPC/NOAA]
URL: <http://www.wpc.ncep.noaa.gov/qpf/94ewbg.gif>
GOES-N fn mod94sus.gif
GOES-R fn Z_QETI88KWNHddhmm_C_KWIN_yyyyMMddhhmmss_nnnnnn-4-MOD94SUS.GIF
 "Z" Originating center local product identifier
 T1 Q - Pictorial information regional (Binary coded)
 T2 E - Precipitation
 A1 T - 45°W - 180° northern hemisphere
 A2 I - 24 hours forecast
 ii 88 - Ground or water properties for the Earth's surface
 Pri 4



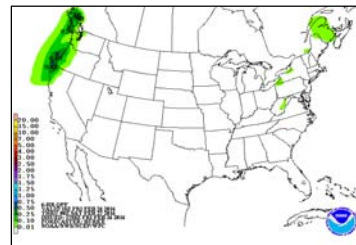
Title: US 24-HR Day 1 QPF 94q [WPC/NOAA]
URL: <http://www.wpc.ncep.noaa.gov/qpf/94qwbq.gif>
GOES-N fn modqp1us.gif
GOES-R fn Z_QETC00KWNHddhmm_C_KWIN_yyyyMMddhhmmss_nnnnnn-4-MODQP1US.GIF
 "Z" Originating center local product identifier
 T1 Q - Pictorial information regional (Binary coded)
 T2 E - Precipitation
 A1 T - 45°W - 180° northern hemisphere
 A2 I - 24 hours forecast
 ii 00 - Entire atmosphere (eg precipitable water)
 Pri 4



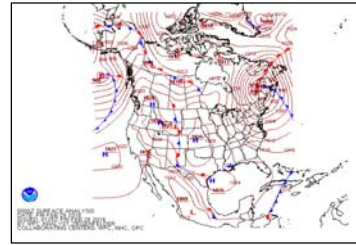
Title: US 24-HR Day 2 QPF 94q [WPC/NOAA]
URL: <http://www.wpc.ncep.noaa.gov/qpf/98qwbq.gif>
GOES-N fn modqp2us.gif
GOES-R fn Z_QETQ00KWNHddhmm_C_KWIN_yyyyMMddhhmmss_nnnnnn-4-MODQP2US.GIF
 "Z" Originating center local product identifier
 T1 Q - Pictorial information regional (Binary coded)
 T2 E - Precipitation
 A1 T - 45°W - 180° northern hemisphere
 A2 Q - 48 hours forecast
 ii 00 - Entire atmosphere (eg precipitable water)
 Pri 4



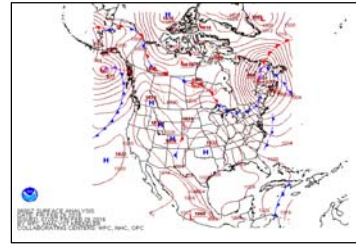
Title: US 6-HR QPF [WPC/NOAA]
URL: http://www.wpc.ncep.noaa.gov/qpf/fill_91ewbg.gif
GOES-N fn mod91eus.gif
GOES-R fn Z_QETC00KWNHddhmm_C_KWIN_yyyyMMddhhmmss_nnnnnn-4-MOD91EUS.GIF
 "Z" Originating center local product identifier
 T1 Q - Pictorial information regional (Binary coded)
 T2 E - Precipitation
 A1 T - 45°W - 180° northern hemisphere
 A2 C - 6 hours forecast
 ii 00 - Entire atmosphere (eg precipitable water)
 Pri 4



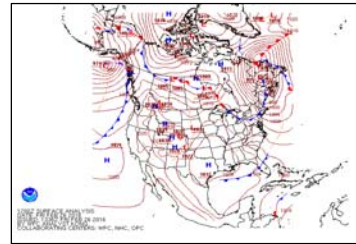
Title: North America 00Z Surface Analysis
URL: <http://www.wpc.ncep.noaa.gov/sfc/namfntsf00wbg.gif>
GOES-N fn imgfnt00.gif
GOES-R fn Z_QPTA98KWNHddhmm_C_KWIN_yyyyMMddhhmmss_nnnnnn-4-IMGFNT00.GIF
 "Z" Originating center local product identifier
 T1 Q - Pictorial information regional (Binary coded)
 T2 P - Pressure
 A1 T - 45°W - 180° northern hemisphere
 A2 A - Analysis (00 hour)
 ii 98 - Air properties for the Earth's surface
 Pri 4



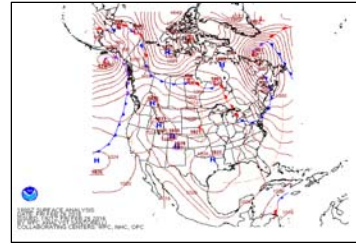
Title: North America 06Z Surface Analysis
URL: <http://www.wpc.ncep.noaa.gov/sfc/namfntsf06wbg.gif>
GOES-N fn imgfnt06.gif
GOES-R fn Z_QPTC98KWNHddhmm_C_KWIN_yyyyMMddhhmmss_nnnnnn-4-IMGFNT06.GIF
 "Z" Originating center local product identifier
 T1 Q - Pictorial information regional (Binary coded)
 T2 P - Pressure
 A1 T - 45°W - 180° northern hemisphere
 A2 C - 6 hours forecast
 ii 98 - Air properties for the Earth's surface
 Pri 4



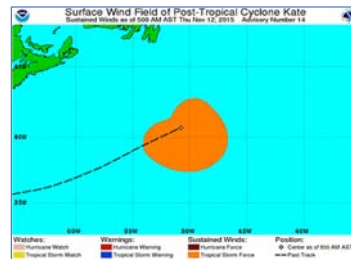
Title: North America 12Z Surface Analysis
URL: <http://www.wpc.ncep.noaa.gov/sfc/namfntsf12wbg.gif>
GOES-N fn imgfnt12.gif
GOES-R fn Z_QPTE98KWNHddhmm_C_KWIN_yyyyMMddhhmmss_nnnnnn-4-IMGFNT12.GIF
 "Z" Originating center local product identifier
 T1 Q - Pictorial information regional (Binary coded)
 T2 P - Pressure
 A1 T - 45°W - 180° northern hemisphere
 A2 E - 12 hours forecast
 ii 98 - Air properties for the Earth's surface
 Pri 4



Title: North America 18Z Surface Analysis
URL: <http://www.wpc.ncep.noaa.gov/sfc/namfntsf18wbg.gif>
GOES-N fn imgfnt18.gif
GOES-R fn Z_QPTG98KWNHddhmm_C_KWIN_yyyyMMddhhmmss_nnnnnn-4-IMGFNT18.GIF
 "Z" Originating center local product identifier
 T1 Q - Pictorial information regional (Binary coded)
 T2 P - Pressure
 A1 T - 45°W - 180° northern hemisphere
 A2 G - 18 hours forecast
 ii 98 - Air properties for the Earth's surface
 Pri 4



Title: Atlantic Basin Tropical Storm [NHC]
URL: http://www.nhc.noaa.gov/storm_graphics/AT12/AL1215R_sm2.gif
GOES-N fn alNNYY rs.gif (where NN = Storm Seq No; YY = Calendar Year)
GOES-R fn Z_PWXA98KNHCddhhmm_C_KWIN_yyyyMMddhhmmss_nnnnnn-4-ALnnyyRS.GIF
 "Z" Originating center local product identifier
 T1 P - Pictorial information (Binary coded)
 T2 W - Wind
 A1 X - Global Area (area not definable)
 A2 A - Analysis (00 hour)
 ii 98 - Air properties for the Earth's surface
 Pri 4
Note * Multiple AT storms per calendar year; folders AT01-AT30 pre-staged at NHC



Title: Eastern Pacific Basin Tropical Storm [NHC]
URL: http://www.nhc.noaa.gov/storm_graphics/EP22/EP2215R_sm2.gif *
GOES-N fn epNNYY ws.gif (where NN = Storm Seq No; YY = Calendar Year)
GOES-R fn Z_PWXA98KNHCddhhmm_C_KWIN_yyyyMMddhhmmss_nnnnnn-4-EPnnyyWS.GIF
 "Z" Originating center local product identifier
 T1 P - Pictorial information (Binary coded)
 T2 W - Wind
 A1 X - Global Area (area not definable)
 A2 A - Analysis (00 hour)
 ii 98 - Air properties for the Earth's surface
 Pri 4
Note * Multiple EP storms per calendar year; folders EP01-EP30 pre-staged at NHC.

