

Typical construction process:

Jefferson Ave. – phase I, Napoleon Ave. - phase 2, Claiborne Ave. - phase 1 and 2.



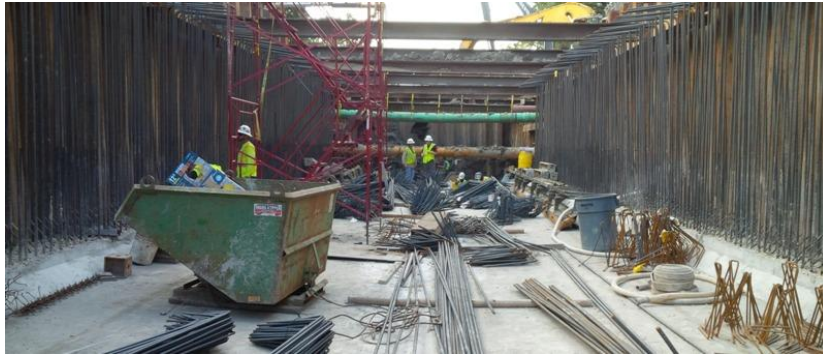
US Army Corps of Engineers
New Orleans District



1. Existing sewer and water mains are relocated, if necessary
2. Timber pile supported box: timber and sheet piles are installed
3. Excavation of Material

Typical construction process:

Jefferson Ave. – phase I, Napoleon Ave. - phase 2, Claiborne Ave. - phase 1 and 2.



5. Materials are backfilled into the ground



4. Box culvert construction takes place



6. Roadway is restored



US Army Corps of Engineers
New Orleans District

Typical construction process:

Jefferson Ave. – Phase 2, Napoleon Ave. – phase 3 and Louisiana Ave.



1. Existing sewer and water mains are relocated if necessary.
2. Jet grout supported box: sheet piles are installed and jet grout operations take place.
3. Materials are excavated.

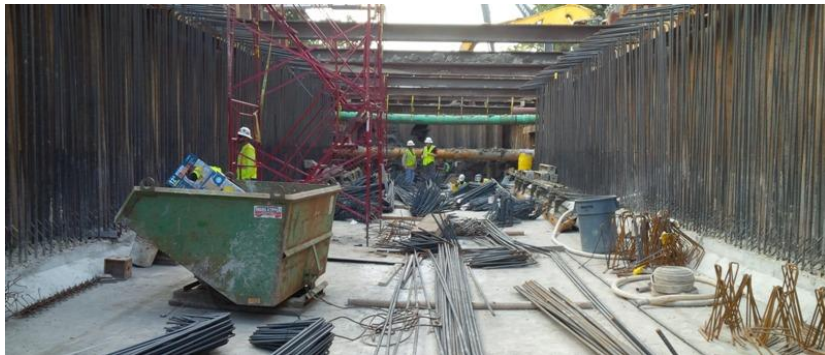




US Army Corps of Engineers
New Orleans District

Typical construction process:

Jefferson Ave. – Phase 2, Napoleon Ave. – phase 3 and Louisiana Ave.



5. Materials are backfilled into the ground



4. Box culvert construction takes place



6. Roadway is restored