

Product Safety & Reliability Department
Telephone: 877-JLG-SAFE
Facsimile: 301-745-3713
E-mail Address: productsafety@jlg.com



Attn: Safety Manager or Service Manager

Subject: Installation of Lanyard Anchorage Points on JLG Products in the United States and Canada

Pursuant to inquiries for information regarding the noted subject, JLG Industries, Inc. Product Safety & Reliability Department submits the following:

JLG Industries, Inc. requires owner, user, and operator compliance with all applicable regulations (employer, local, state, and federal) pertaining to the utilization of aerial work platforms.

The enclosed information has been compiled for your reference and use. Please follow the enclosed procedures for the proper and authorized installation of lanyard anchorage points on the specified JLG models.

Lanyard anchorage points, as originally equipped or authorized by JLG for installation on JLG products, are designed and tested by JLG Industries, Inc. These authorized lanyard anchorage points meet or exceed the 2273 kg (5000 lb.) static pull test requirements set forth in the OSHA Standard 1926.502, section (d) (15) and lanyard anchorage point testing criteria as required in the applicable CSA B354 National Standard of Canada. Each authorized lanyard anchorage point is designed specifically to be utilized by one (1) person only. There must be an authorized lanyard anchorage point for each additional person(s) in the platform.

Each unit must have a current Annual Machine Inspection with all noted discrepancies properly corrected. The entity performing the lanyard anchorage point installation is responsible for the quality of installation in accordance with the enclosed procedures. The current owner is responsible for the overall safe and proper operating condition of the subject unit.

Should you have any questions or require additional information, please advise.

Sincerely,

JLG INDUSTRIES, INC.

**AVAILABLE AUTHORIZED LANYARD ANCHORAGE POINT
INSTALLATIONS - SCISSOR LIFT PRODUCTS**

<i>Scissor Lift Model</i>	<i>Floor Mounted Lanyard Anchorage Point</i>	<i>Rail Mounted Lanyard Anchorage Point</i>
15S	Y	N
15S-1	Y	N
20S	Y	N
20S-1	Y	N
25S	Y	N
35S	Y	N
25MS	Y	N
25MSE	Y	N
250MS	Y	N
350MS	Y	N
40MS	Y	N
400MS	Y	N
CM20N	Y	N
CM20W	Y	N
CM26N	Y	N
CM26W	Y	N
CM1432	Y	Y
CM1732	Y	Y
CM2033	Y	Y
CM2046	Y	Y
CM2546	Y	Y
CM2558	Y	Y
CM25RT	Y	N
CM33RT	Y	N
CM40RT	Y	N
25RTS	Y	Y
33RTS	Y	Y
40RTS	Y	Y
400RTS	Y	Y
500RTS	Y	Y
3369e	Y	Y
3969e	Y	Y
26MRT	Y	Y
1532E	Y	Y
1932E	Y	Y
2033E	Y	Y
2046E	Y	Y
2646E	Y	Y
2658E	Y	Y

Y = Available Installation
S = Standard Location
F = Consult Factory

N = Not Available for Installation
O = Optional Location

AVAILABLE AUTHORIZED LANYARD ANCHORAGE POINT INSTALLATIONS – SCISSOR LIFT PRODUCTS		
<i>Scissor Lift Model</i>	<i>Floor Mounted Lanyard Anchorage Point</i>	<i>Rail Mounted Lanyard Anchorage Point</i>
1932E2*	Y	S
2032E2*	O	S
2646E2*	Y	S
3246E2*	Y	S
1532E3*	O	S
1932E3*	O	S
2033E3*	O	S
2046E3*	O	S
2646E3*	O	S
2658E3*	O	S
260MRT*	O	S
330CRT*	O	S
400CRT*	O	S
3369LE*	O	S
4069LE*	O	S
3394RT	F	S
4394RT	F	S

Y = Available Installation
S = Standard Location
F = Consult Factory

N = Not Available for Installation
O = Optional Location

* These models were originally equipped with lanyard anchorage points as a standard production feature at the specified location (rail mount or floor mount).

Note: Units equipped with wood decks must have them removed and replaced with steel decks for installation of floor mounted lanyard anchorage points. Contact the Product Safety & Reliability Department for a procedure with illustrations.

PROCEDURE: Floor Mounted (Weld-on) Lanyard Anchorage Point Installation
MODEL(S): See Attached List of Authorized Scissor Lift Installations

Tools and Equipment Required:

1. hand-held power grinder
2. AWS 70 grade, low hydrogen rod or wire
3. electric welding equipment
4. standard mechanic tools
5. paint

Personnel Required:

1. certified welder

Parts Required (per lanyard anchorage point):

1. plate, P/N 3534309 - quantity 1
2. lanyard swivel ring, P/N 3760274 - quantity 1
3. decal, P/N 1702612 - quantity 1

NOTE: *DO NOT INSTALL A LANYARD ANCHORAGE POINT ON, UNDER, OR IN THE TRAVEL PATH OF ANY EXTENDABLE DECK.*

NOTE: *SCISSOR LIFT MUST BE FULLY LOWERED AND IN ITS STOWED POSITION BEFORE INSTALLING THE LANYARD ANCHORAGE POINT.*

Procedure:

1. Verify that the subject scissor lift is equipped with a steel platform floor. If equipped with a wooden floor, complete the Wood-to-Steel Deck Conversion procedure prior to proceeding to step 2. Notify JLG Industries, Inc. if a copy of the Wood-to-Steel Deck Conversion procedure is required. Remove all foreign matter (i.e., paint, grease, dirt, rust, etc.) from installation areas.

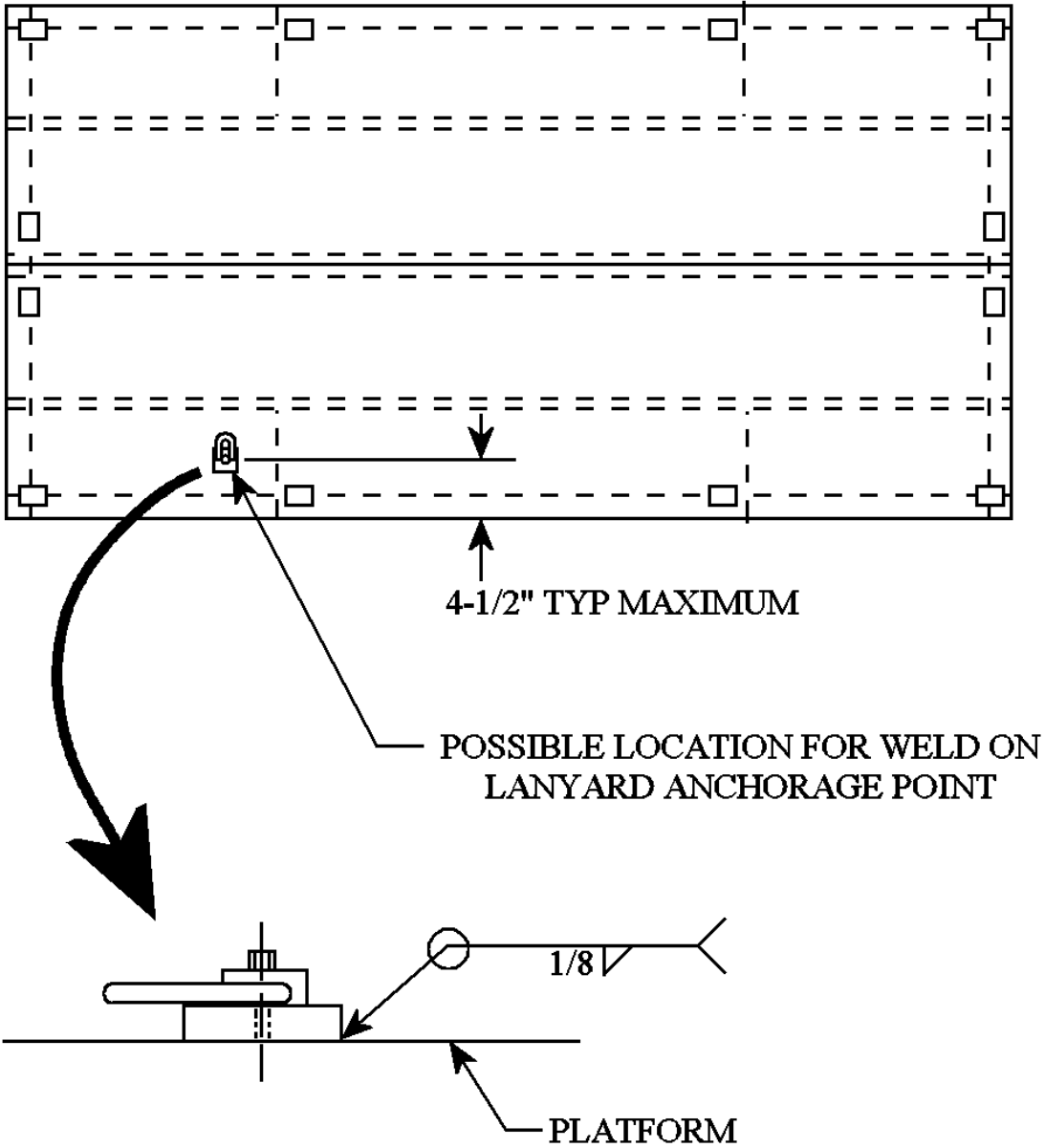
2. Referencing the attached illustrations, locate and tack weld, in place, the lanyard anchorage plate (P/N 3534309).

Note: The center of the lanyard anchorage plate can be located a maximum of 4 1/2" from the edge of the scissor lift platform.

3. Ensure the lanyard anchorage plate is properly located and install using the recommended weld material with types and sizes as shown on the enclosed illustrations.
4. Inspect all repair procedure welds using a magnetic particle, dye-penetrant, or other acceptable weld inspection method to determine the quality of the weld. If the quality is found to be unacceptable, according to the above listed Standards, air carbon-arc/grind to remove affected area(s). Reweld the affected area(s) using recommended weld materials and procedures. Repeat weld inspection procedure.
5. Properly install the lanyard swivel ring (P/N 3760274) to the lanyard anchorage plate. Torque the bolt to 28 ft.-lbs. dry.
6. Clean, prime, and paint installation area.
7. Install decal (JLG P/N 1702612) at or near each lanyard anchorage point.
8. Repeat steps #1 through #7 for the remaining lanyard anchorage points to be installed.
9. Inspect the completed work and report to JLG Industries, Inc., in writing, any noted discrepancies and/or irregularities.

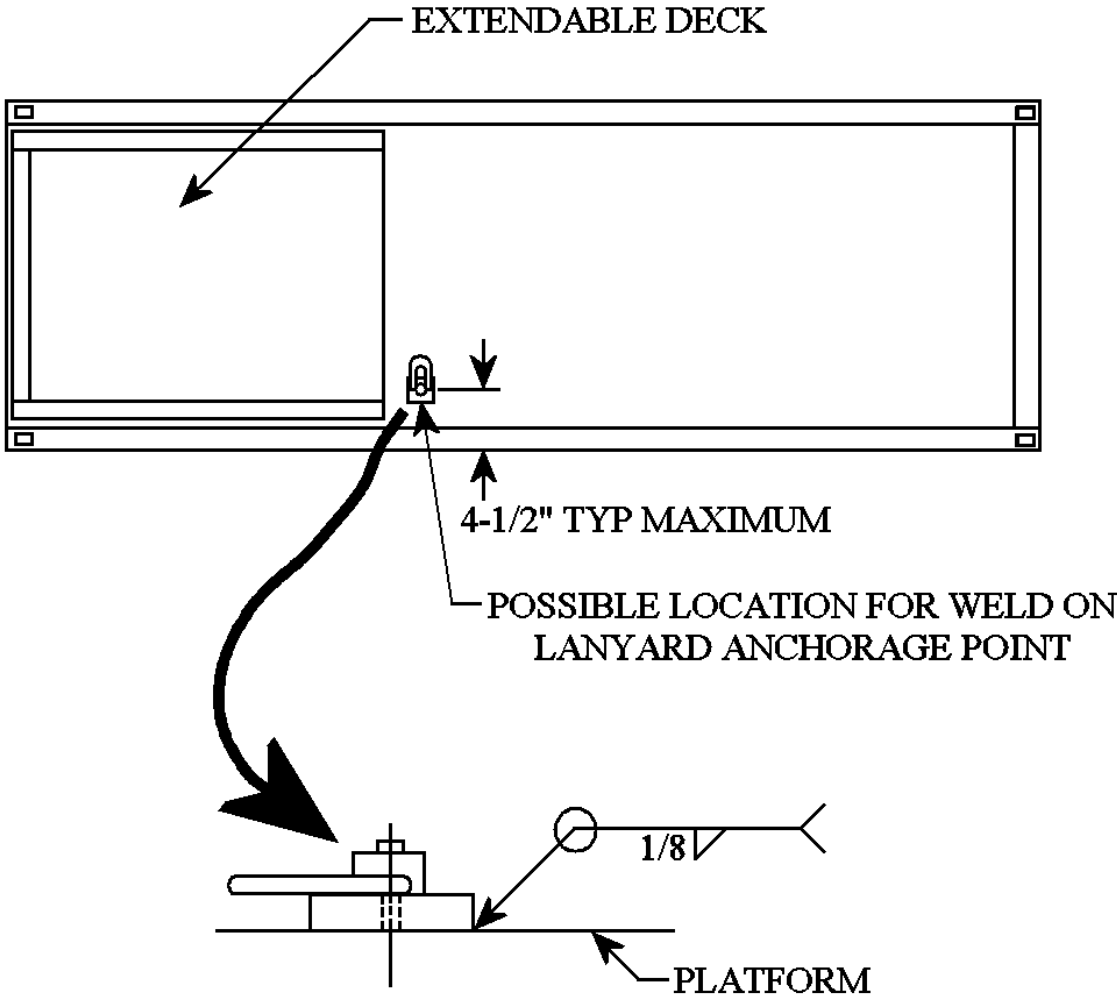
WELD ON FLOOR MOUNTED LANYARD ANCHORAGE POINT INSTALLATION

JLG Scissor Lifts
Illustration 1 of 2



WELD ON FLOOR MOUNTED LANYARD ANCHORAGE POINT INSTALLATION

JLG Scissor Lifts
Illustration 2 of 2



PROCEDURE: Floor Mounted (Bolt-on) Lanyard Anchorage Point Installation
MODEL(S): See Attached List of Authorized Scissor Lift Installations

Tools and Equipment Required:

1. power drill and assorted drill bits
2. standard mechanic tools
3. Loctite #242

Personnel Required:

1. qualified JLG equipment mechanic

Parts Required (per lanyard anchorage point):

1. swivel D-ring, JLG P/N 3760321 - quantity 1
2. screw cap, JLG P/N 0641506 - quantity 4
3. washer, JLG P/N 4761500 - quantity 4
4. hex nut, JLG P/N 3311501 - quantity 4
5. decal, JLG P/N 1702612 - quantity 1

IMPORTANT: ENSURE SCISSOR ARM ASSEMBLY IS PROPERLY SUPPORTED WHEN ACCESSING THE UNDERSIDE OF THE PLATFORM.

CAUTION: USE ALL APPLICABLE SAFETY PRECAUTIONS WHILE WORKING ON, UNDER, OR AROUND ANY MACHINERY.

NOTE: ENSURE AREA UNDERNEATH INSTALLATION AREA IS FREE FROM OBSTRUCTIONS (I.E., CHANNELS, PLATES, GUSSETS, ETC.).

NOTE: DO NOT INSTALL A LANYARD ANCHORAGE POINT ON, UNDER, OR IN THE TRAVEL PATH OF ANY EXTENDABLE DECK.

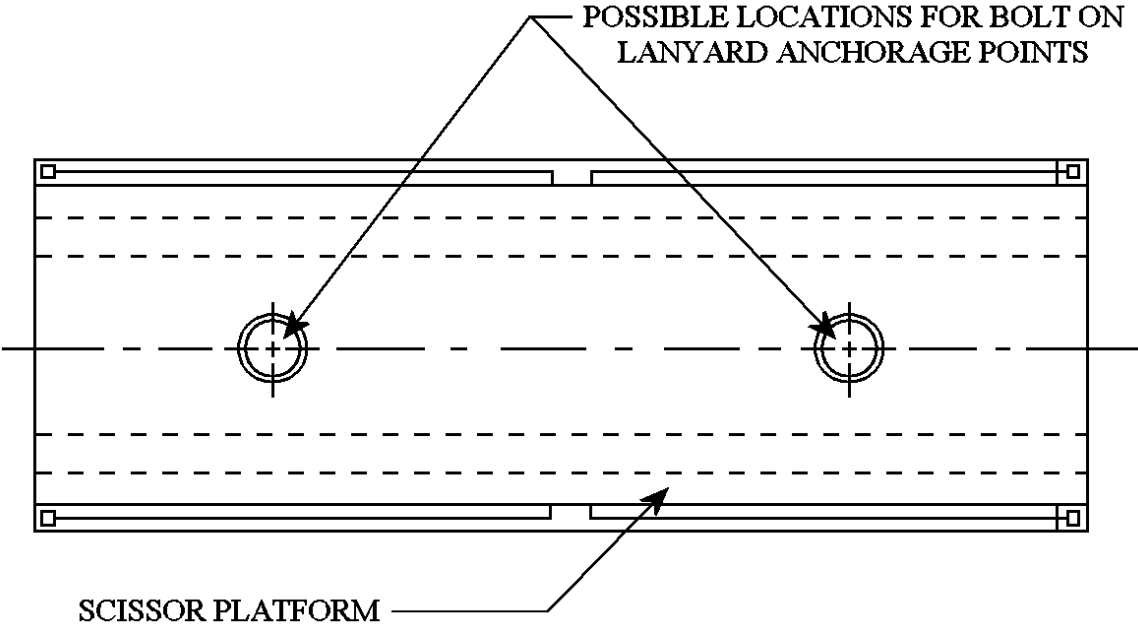
Procedure:

1. Verify that the subject scissor lift is equipped with a steel platform floor. If equipped with a wooden floor, complete the Wood-to-Steel Deck Conversion procedure prior to proceeding to step 2. Notify JLG Industries, Inc. if a copy of the Wood-to-Steel Deck Conversion procedure is required.
2. Remove all foreign matter (i.e., dirt, paint, grease, rust, etc.) from installation areas.

3. Locate and cut out a 4 1/2" diameter hole in the platform floor at locations where swivel D-rings (P/N 3760321) are to be installed. Refer to the attached illustrations for recommended locations.
4. Locate and drill four (4) attachment holes (0.343" DIA) which are situated on the 5 3/8" bolt circle for each of the swivel D-rings to be installed.
5. Install swivel D-rings by utilizing the appropriate number of cap screws (P/N 0641506), washers (P/N 4761500), and hex nuts (P/N 3311501). Apply Loctite #242 to the cap screws and torque to 19 ft. lbs.
6. Install decal (P/N 1702612) at or near each lanyard anchorage point.
7. Repeat steps #1 through #5 for the remaining lanyard anchorage points to be installed.
8. Inspect the completed work and report to JLG Industries, Inc., in writing, any noted discrepancies and/or irregularities.

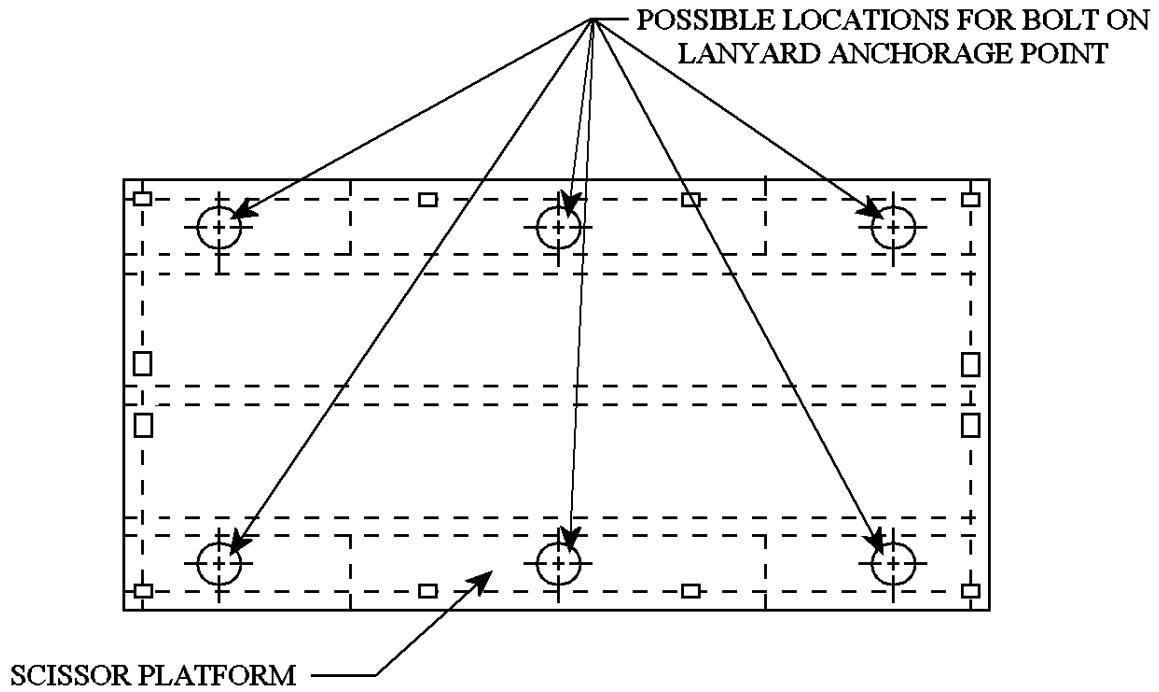
BOLT ON FLOOR MOUNTED LANYARD ANCHORAGE POINT INSTALLATION

JLG Scissor Lifts
Illustration 1 of 3



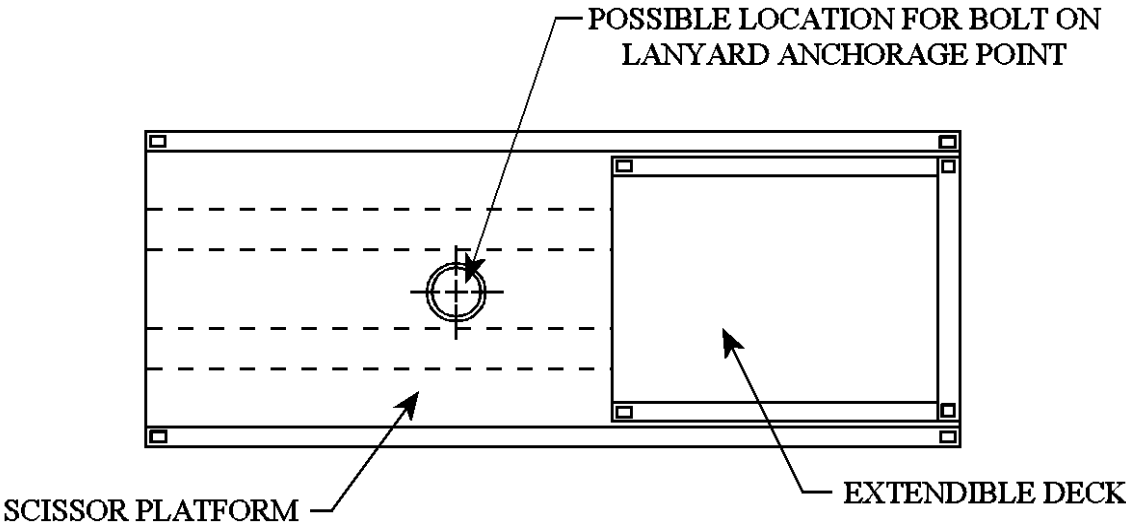
BOLT ON FLOOR MOUNTED LANYARD ANCHORAGE POINT INSTALLATION

JLG Scissor Lifts
Illustration 2 of 3



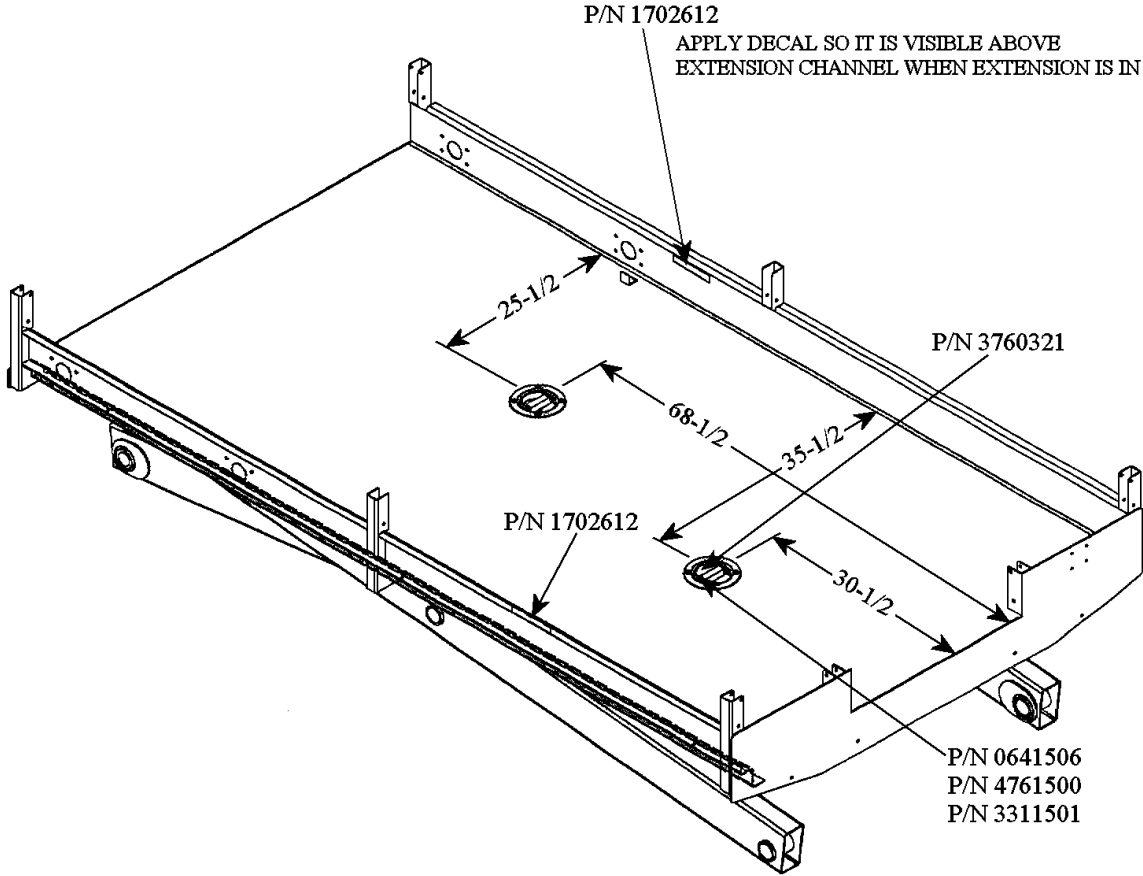
BOLT ON FLOOR MOUNTED LANYARD ANCHORAGE POINT INSTALLATION

JLG Scissor Lifts
Illustration 3 of 3



BOLT ON FLOOR MOUNTED LANYARD ANCHORAGE POINT INSTALLATION

JLG Scissor Lift Model 400CRT



PROCEDURE: Rail-Mounted Lanyard Anchorage Point Installation
MODEL(S): See Attached List of Authorized Scissor Lift Installations

Tools and Equipment Required:

1. hand-held power grinder
2. electric welding equipment
3. AWS 70 grade, low hydrogen rod or wire
4. standard welding and mechanic tools
5. power drill and 7/16" steel bit
6. paint

Personnel Required:

1. certified welder

Parts Required (per lanyard anchorage point):

1. lanyard anchorage rod, P/N 3841232 or 3840732 - quantity 1
2. decal, P/N 1702612 - quantity 1

NOTE: DO NOT INSTALL A LANYARD ANCHORAGE POINT ON, UNDER, OR IN THE TRAVEL PATH OF ANY EXTENDABLE DECK.

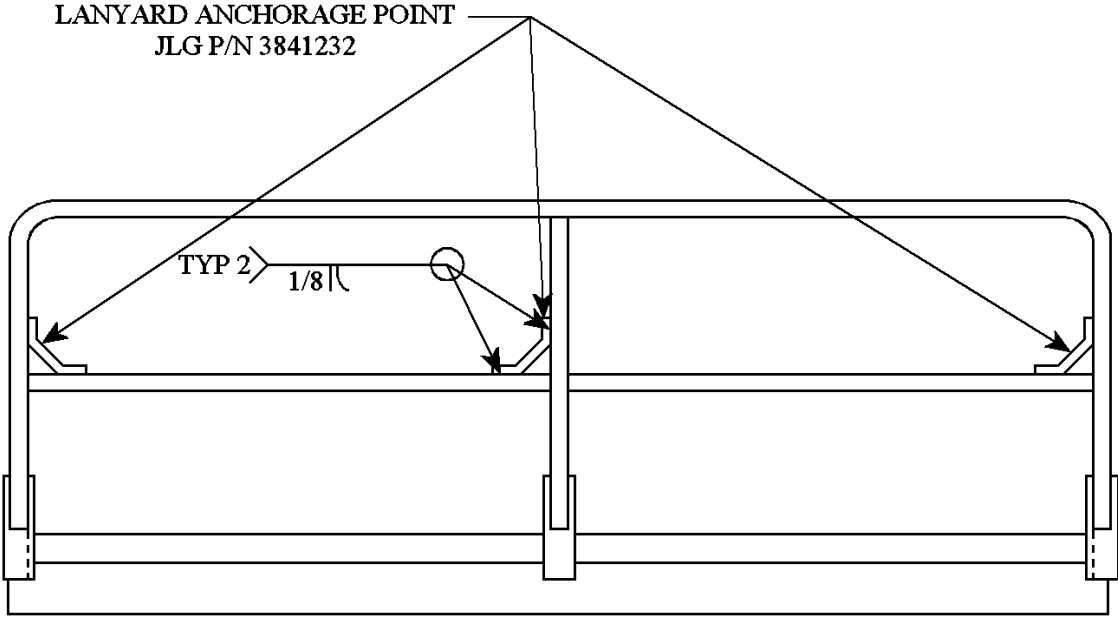
Procedure:

1. Verify that lanyard anchorage points may be installed on the mid-rail of the subject scissor lift's main platform guardrail. Refer to the Available Authorized Lanyard Anchorage Point Installation chart for JLG scissor lift products. Notify JLG Industries, Inc. if a copy of this chart is required.
2. Remove all foreign matter (i.e., dirt, grease, rust, paint, etc.) from lanyard anchorage point installation areas. See the enclosed illustrations.
3. For the installation of lanyard anchorage rod, JLG P/N 3840732, drill two (2) 7/16" holes, using a power drill, approximately 4 1/8" apart at the specified locations, as indicated in the enclosed illustrations.
4. Locate and tack weld in place, the lanyard anchorage rod, JLG P/N 3841232 or P/N 3840732, as shown in the enclosed illustrations.

5. Ensure proper location of the lanyard anchorage rod. Install by welding using recommended weld materials with the weld types and sizes as shown on the enclosed illustrations.
6. Inspect all repair procedure welds using a magnetic particle, dye-penetrant or other acceptable weld inspection method to determine the quality of the weld. If the quality is found to be unacceptable, according to the above listed standards, air carbon-arc, cut, and/or grind to remove affected area(s). Reweld affected area(s) using recommended weld materials and procedures. Repeat weld inspection procedure.
7. Repeat steps #1 through #5 for each remaining safety lanyard anchorage point to be installed.
8. Clean, prime, and paint affected areas.
9. Install decal (JLG P/N 1702612) at or near each lanyard anchorage point.
10. Inspect the completed work and report to JLG Industries, Inc., in writing, any noted discrepancies and/or irregularities.

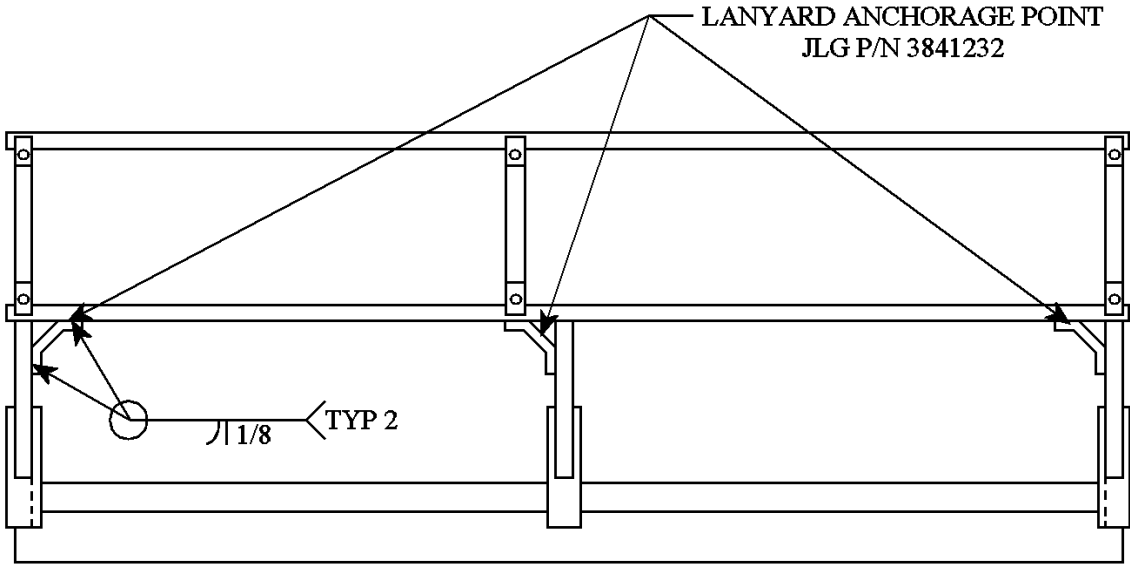
RAIL MOUNTED LANYARD ANCHORAGE POINT INSTALLATION

JLG Scissor Lifts
Illustration 1 of 5



**RAIL MOUNTED
LANYARD ANCHORAGE POINT
INSTALLATION**

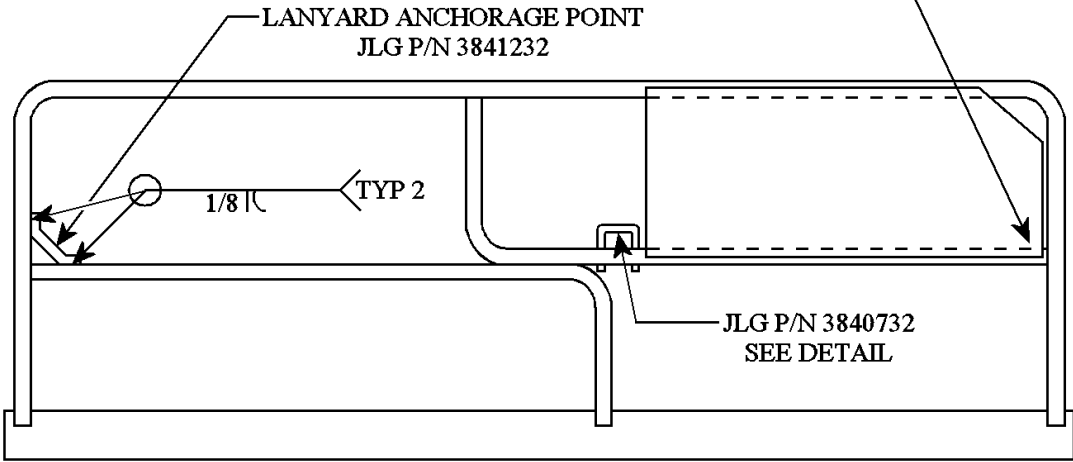
**JLG Scissor Lifts – Fold Down Rails
Illustration 2 of 5**



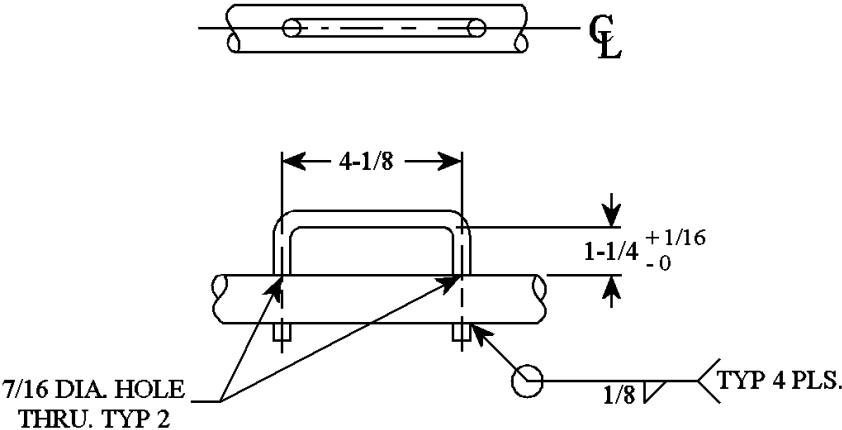
RAIL MOUNTED LANYARD ANCHORAGE POINT INSTALLATION

**JLG Scissor Lifts
Illustration 3 of 5**

DO NOT INSTALL A LANYARD ANCHORAGE POINT IN THIS LOCATION

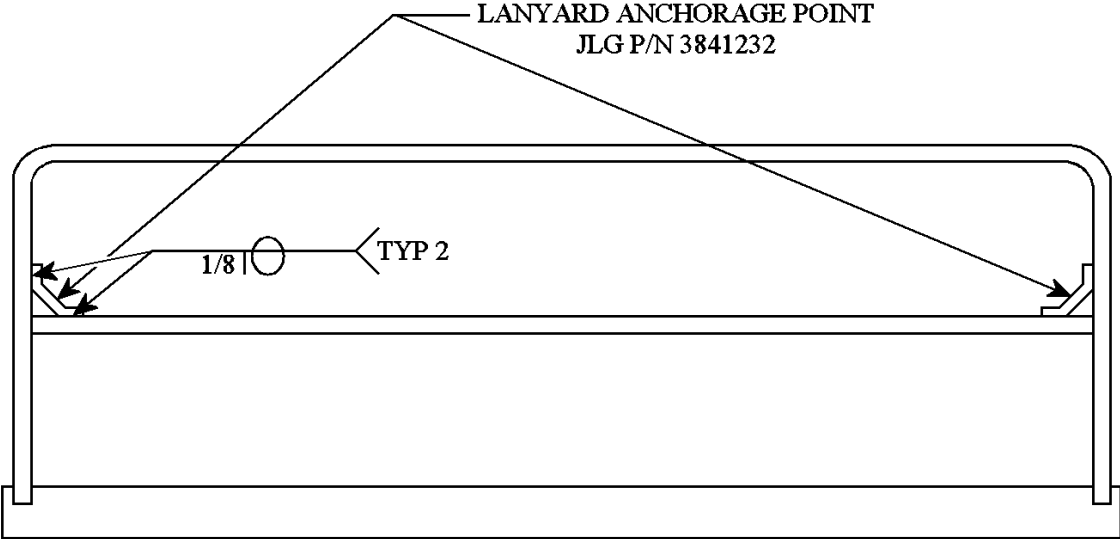


DETAIL



RAIL MOUNTED LANYARD ANCHORAGE POINT INSTALLATION

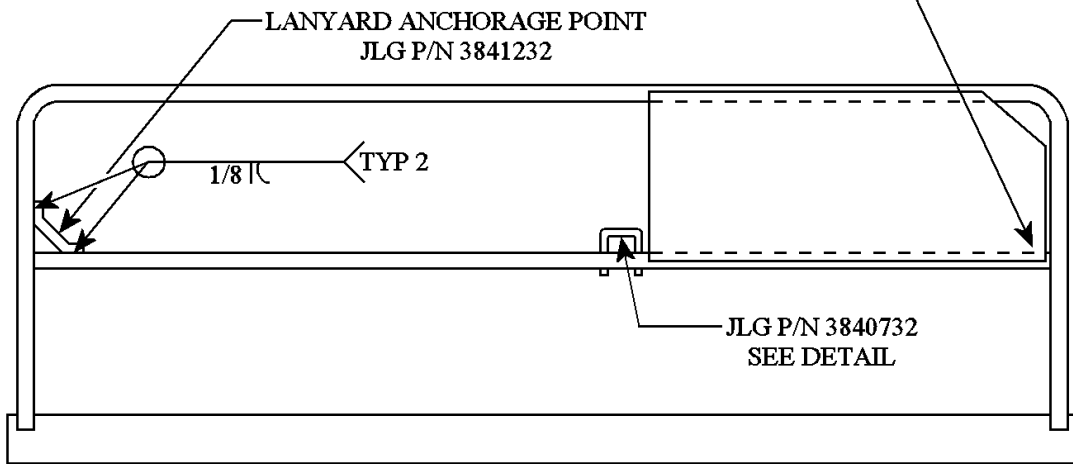
JLG Scissor Lifts
Illustration 4 of 5



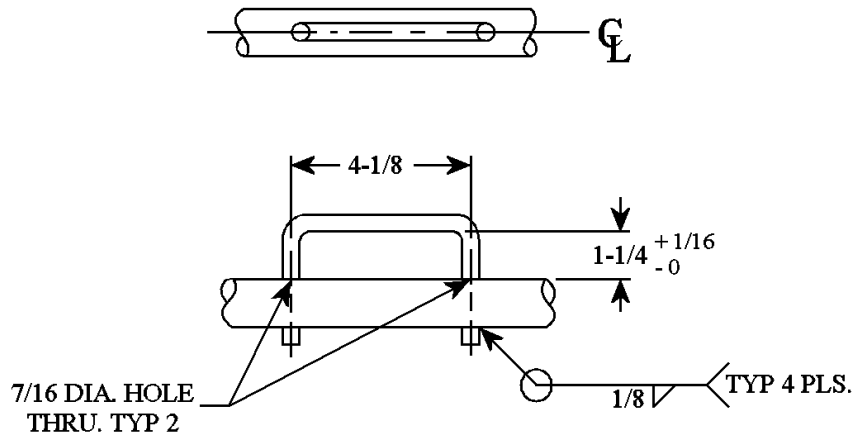
RAIL MOUNTED LANYARD ANCHORAGE POINT INSTALLATION

JLG Scissor Lifts
Illustration 5 of 5

DO NOT INSTALL A LANYARD ANCHORAGE POINT IN THIS LOCATION



DETAIL



PROCEDURE: Wood-to-Steel Deck Conversion
MODEL(S): Scissor Lift Models CM20N,CM20W and CM 26N

Tools and Equipment Required:

1. air carbon-arc equipment
2. hand-held power grinder
3. electric welding equipment
4. AWS 70 grade, low hydrogen rod or wire
5. standard welding tools
6. paint

Personnel Required:

1. certified welder

Parts Required (per lanyard anchorage point):

1. steel deck plate
 - a) CM20N - P/N 3533131, or 14ga. X 24" X 89 1/2" A36 steel plate
 - b) CM20W - P/N 3533130, or 14ga. X 36" X 89 1/2" A36 steel plate
 - c) CM26W - P/N 3533130, or 14ga. X 36" X 89 1/2" A36 steel plate
1. steel channel, 5/8" X 1 1/2" X 89 1/2" A36 steel (minimum), qty. 2

Procedure:

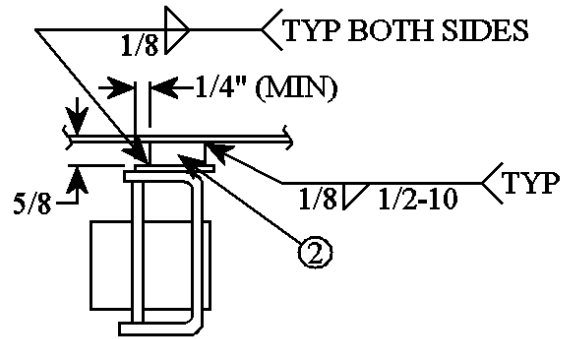
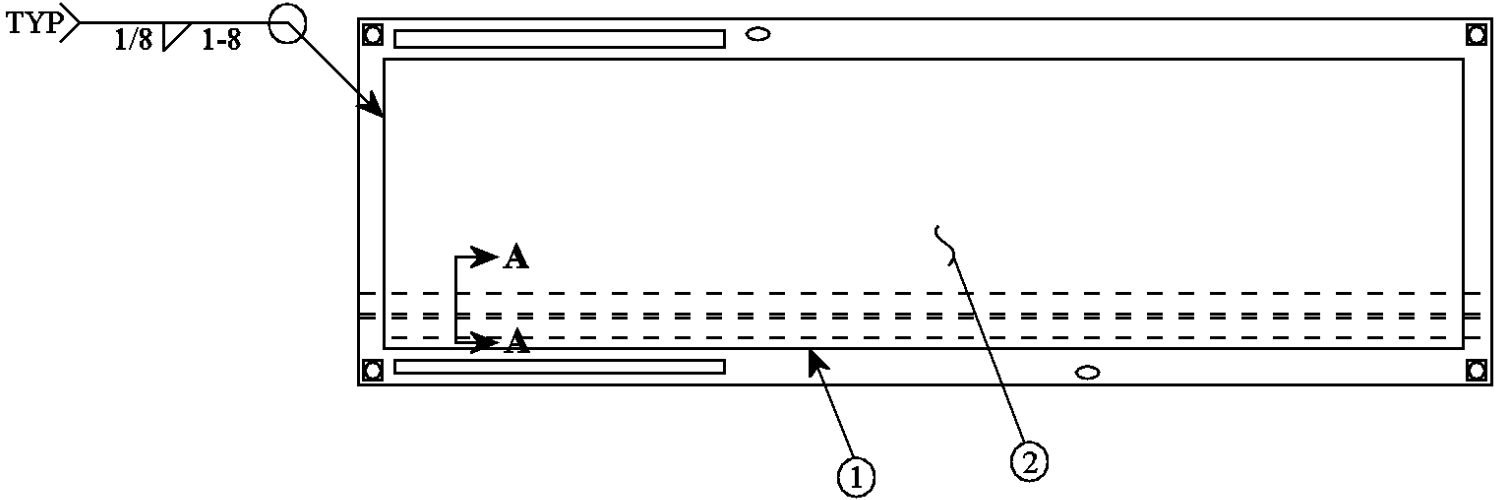
1. Remove the bolts and all existing hardware securing the wood deck to the platform weldment.
2. Remove all foreign matter (i.e., dirt, grease, rust, paint, etc.) from installation areas.
3. Locate the steel channels as shown on the enclosed illustration. Trim to fit as required. Install by welding using the recommended weld material with weld types and sizes as indicated on the enclosed illustration.
4. Inspect welds using the magnetic particle or dye-penetrant methods to assure there are no cracks or deformities. If any cracks or deformities exist, grind to remove affected area(s), and repeat the weld and weld inspection procedures.
5. Locate the steel deck as shown on the enclosed illustration. Trim to fit as required. Install by welding using the recommended weld material with weld types and sizes as indicated on the enclosed illustration.

6. Clean, prime, and paint affected areas.
7. Reassemble all components. Prepare the unit for operation.
8. Load the unit with the rated capacity and cycle the platform extension and lift/lower functions throughout their full range a minimum of five (5) times to ensure safe and proper operation.

Should any discrepancies be discovered during the accomplishment of this procedure, contact JLG Industries, Inc. for further evaluation.

WOOD TO STEEL DECK CONVERSION

CM20N, CM20W, and CM26N Scissor Lifts



VIEW A-A

MODEL	ITEM	PART NUMBER	QUANTITY	MATERIAL	SIZE
CM20N	1	3533131	1	A36 STEEL	14 GA x 24 x 89-1/2 dia trd
CM20W	1	3533130	1	A36 STEEL	14 GA x 36 x 89-1/2 dia trd
CM26N	1	3533130	1	A36 STEEL	14 GA x 36 x 89-1/2 dia trd
BOTH	2	----	2	A36 STEEL	5/8 x 1-1/2 x 89-1/2 channel

NOTE: TRIM IS REQUIRED FOR PROPER FIT

PROCEDURE: Lanyard Anchorage Point Installation
MODEL(S): AM and VP Series Personnel Lifts

Tools and Equipment Required:

1. standard mechanic tools
2. power drill and 9/16" drill bit

Personnel Required:

1. qualified JLG equipment mechanic

Parts Required (per lanyard anchorage point):

1. lanyard anchorage installation, P/N 0256559, qty. 1, containing the following parts:
 - a) lanyard anchorage backing, P/N 3539814, qty. 1
 - b) lanyard anchorage plate, P/N 4845345, qty. 1
 - c) 1/2-13 UNC x 1.5 LG Grade 8 bolt, P/N 0681812, qty. 2
 - d) flatwasher, P/N 4751800, qty. 4
 - e) 1/2 - 13 UNC centerlock nut, P/N 3271805, qty. 2
 - f) decal, P/N 1702612, qty. 1

IMPORTANT: MAST MUST BE FULLY LOWERED AND MACHINE MUST BE IN ITS STOWED POSITION BEFORE STARTING INSTALLATION PROCEDURE.

CAUTION: USE ALL APPLICABLE SAFETY PRECAUTIONS WHILE WORKING ON, UNDER OR AROUND ANY MACHINERY.

Note: On personnel lifts equipped with a molded plastic platform, the platform will need to be removed prior to installing the lanyard anchorage point. Reference the Service and Specifications Manual and Illustrated Parts Manual for safe and proper disassembly/assembly procedures.

Procedure:

1. Remove all foreign matter (i.e., paint, grease, dirt, rust, etc.) from installation area.
2. Locate and drill two holes (9/16" diameter) approximately 11.0" on the appropriate side of the mast supporting the platform. Reference the enclosed illustrations.

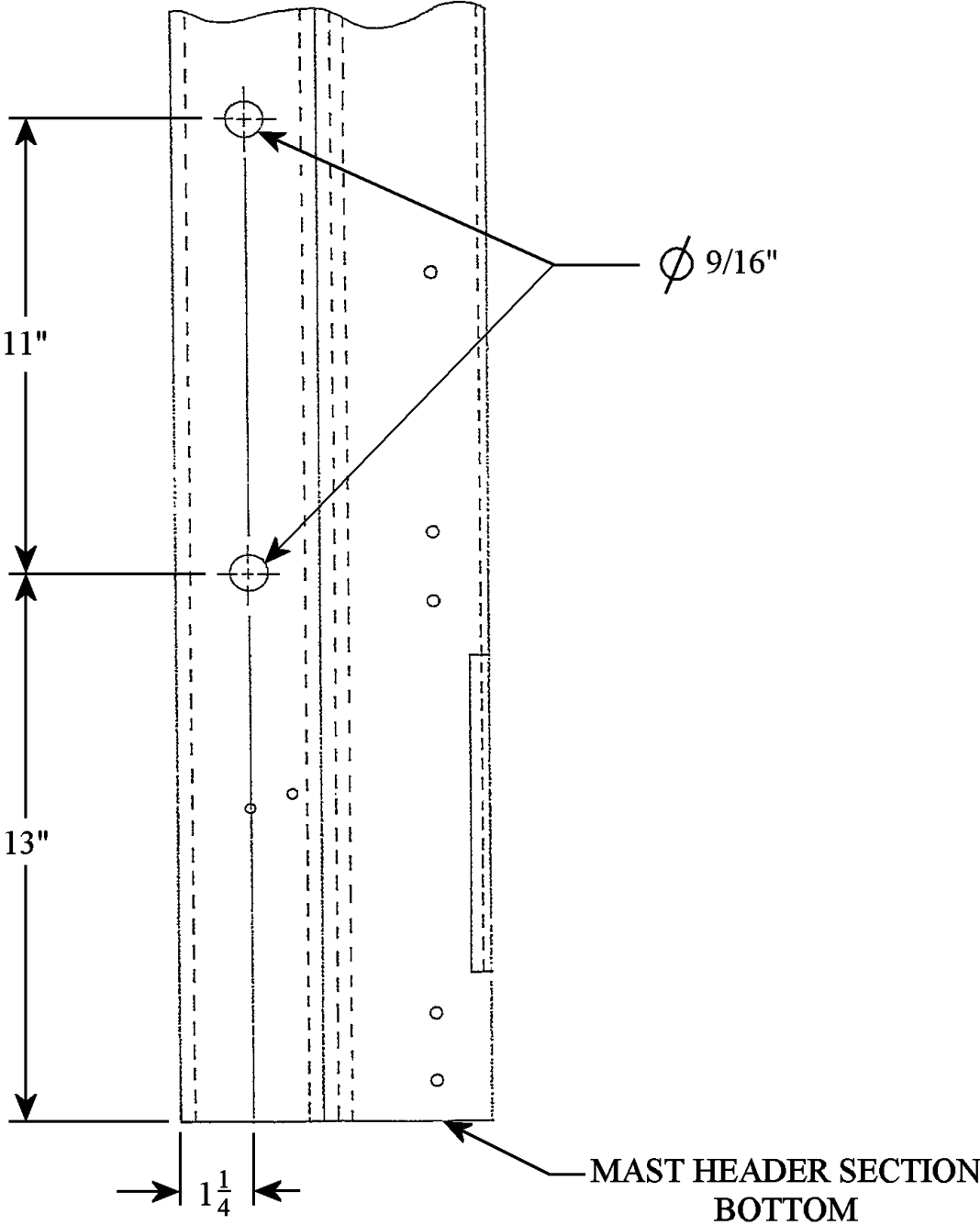
3. Position the lanyard anchorage backing (P/N 3539814) and lanyard anchorage plate (P/N 4845345) on the inside and outside locations of the channel, respectively. Refer to illustration #2.
4. Insert the two (2) 1/2-13UNC x 1.5 LG Grade 8 bolts (P/N 0681812) through the lanyard anchorage mounting holes, making sure to properly locate the 1/2" flatwashers (P/N 4751800).
5. Install and finger tighten the two (2) 1/2-13UNC centerlock nuts (P/N 3271805).
6. Torque the bolts to 75 ft./lbs., dry.
7. Install decal "Attach Lanyard Here", (P/N 1702612) at or near the lanyard anchorage point.
8. Inspect the completed work and report to JLG Industries, Inc., in writing, any noted discrepancies and/or irregularities

LANYARD ANCHORAGE POINT INSTALLATION

AM and VP Personnel Lifts
Illustration 1 of 3

Mounting Hole Location on Mast

NOTE: DRAWING NOT TO SCALE



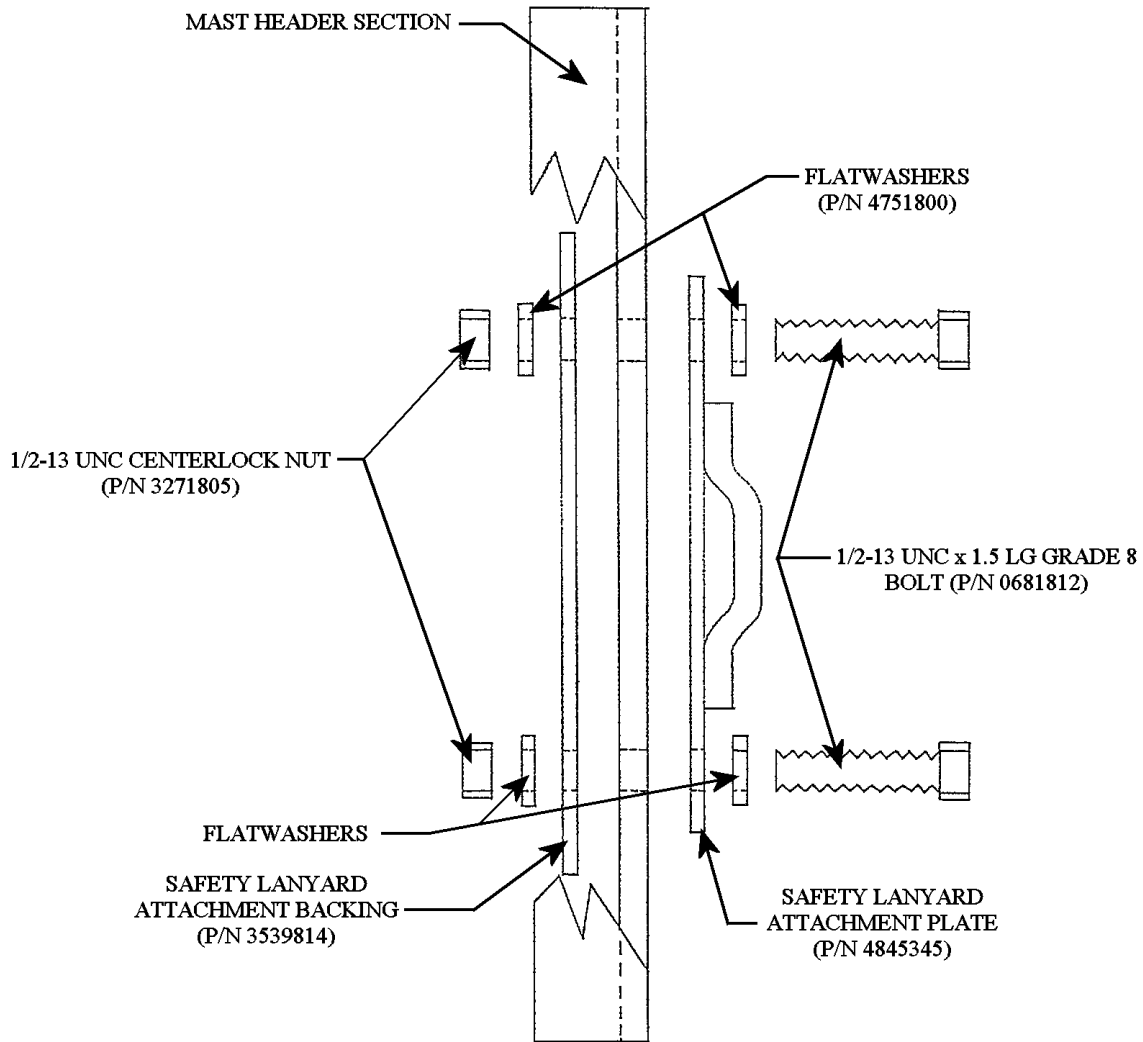
LANYARD ANCHORAGE POINT INSTALLATION

AM and VP Personnel Lifts

Illustration 2 of 3

Anchorage Point Assembly

NOTE: DRAWING NOT TO SCALE



LANYARD ANCHORAGE POINT INSTALLATION

AM and VP Personnel Lifts
Illustration 3 of 3

Final Assembly

NOTE: DRAWING NOT TO SCALE

