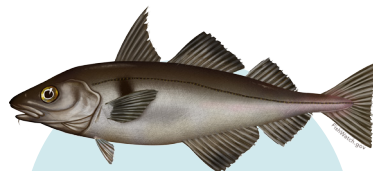


**Atlantic Cod**

**Gulf of Maine**  
24 inches  
1 fish/person/day  
**Open Season:**  
Aug 1 - Sept 30

**Georges Bank**  
22 inches  
**Private:** 10 fish/person/day  
**Charter/Party:** Unlimited



**Haddock**

**Gulf of Maine**  
17 inches  
15 fish/person/day  
**Open Season:**  
May 1 - Feb 28  
Apr 15 - Apr 30

**Georges Bank**  
18 inches  
Unlimited



**Pollock**  
19 inches  
Unlimited



**Witch Flounder  
(Gray Sole)**  
14 inches  
Unlimited

*This summary provides a broad overview for the recreational fishery in Federal waters, 3-200 miles offshore; the regulations summarized here may be found at 50 CFR part 648.*

*The following measures apply to private recreational fishing vessels, Federal charter/party permitted vessels, and Federal NE multispecies permitted vessels fishing under the charter/party or recreational regulations (not fishing under a NE multispecies day-at-sea).*

*Updated May 1, 2016*



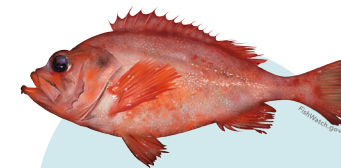
**Yellowtail Flounder**  
13 inches  
Unlimited



**American Plaice  
(Dab)**  
14 inches  
Unlimited



**Winter Flounder  
(Blackback)**  
12 inches  
Unlimited



**Redfish  
(Ocean Perch)**  
9 inches  
Unlimited

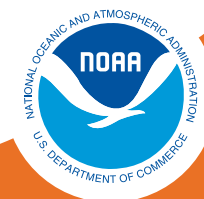


**Hake:**  
Offshore, Red, White,  
and Silver (Whiting)  
No Size Limit  
Unlimited



**Atlantic Halibut**  
41 inches  
1 fish per vessel per trip

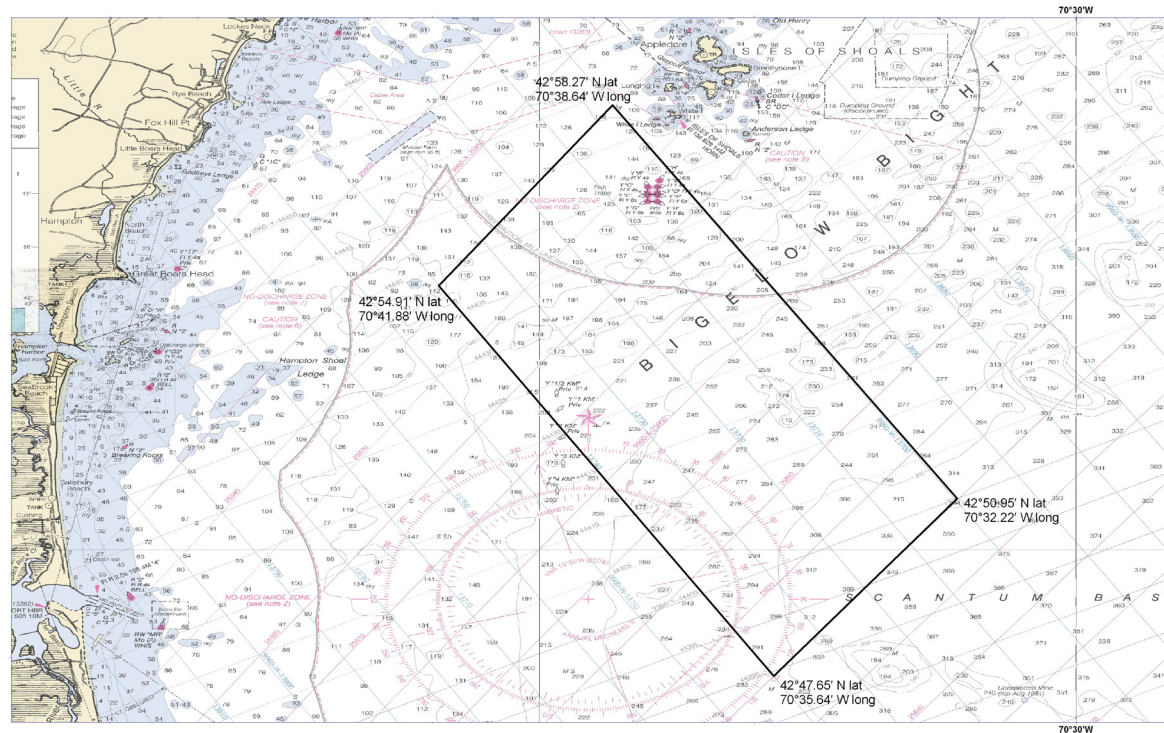
**NO RETENTION SPECIES:**  
Atlantic Wolffish  
Windowpane Flounder  
Ocean Pout



Questions regarding charter/party and recreational regulations?

Contact:  
Sustainable Fisheries  
(978) 281 – 9315

### Whaleback Cod Spawning Protection Area



**Gear Restrictions:** The following gear restrictions apply to recreational vessels fishing in the GOM Cod Spawning Protection Area.

- **Recreational vessels:** From April 1 through June 30 of each year, all recreational vessels, including private recreational and charter/party vessels, may only use pelagic hook-and-line gear, as defined below, when fishing in the GOM Cod Spawning Protection Area.
  - Pelagic hook-and-line gear is defined as handline or rod and reel gear that is designed to fish for, or that is being used to fish for, pelagic species. No portion of this gear may be operated in contact with the bottom at any time.

| Point | N. Latitude | W. Longitude |
|-------|-------------|--------------|
| CSPA1 | 42° 50.95'  | 70° 32.22'   |
| CSPA2 | 42° 47.65'  | 70° 35.64'   |
| CSPA3 | 42° 54.91'  | 70° 41.88'   |
| CSPA4 | 42° 58.27'  | 70° 38.64'   |

**Possession Restrictions:** Any vessel fishing in the GOM Cod Spawning Protection Area and using the exempted gear described above, including pelagic hook-and-line gear by recreational vessels, is prohibited from possessing or retaining regulated species or ocean pout from April 1 through June 30 of each year.

**Transiting:** Recreational vessels may transit the GOM Cod Spawning Protection Area provided all bait and hooks are removed from fishing rods, and any regulated species on board have been caught outside the GOM Cod Spawning Protection Area and has been gutted and stored.