



WEST RETURN FLOODWALL

Updated May 2013

U.S. ARMY CORPS OF ENGINEERS

BUILDING STRONG®

Public safety is the Corps of Engineers' top priority. Congress has fully authorized and funded the Hurricane and Storm Damage Risk Reduction System (HSDRRS) for southeast Louisiana. The \$14.45 billion HSDRRS includes five parishes and consists of 350 miles of levees and floodwalls; 73 non-Federal pumping stations; 3 canal closure structures with pumps; and 4 gated outlets.

Project Summary

The West Return Floodwall (WRF), located on the east bank of the Mississippi River at the western end of Jefferson Parish, runs along the St. Charles and Jefferson Parish line from the Louis Armstrong New Orleans International Airport to Lake Pontchartrain. The project was divided into two separate contracts in order to expedite construction.

The structural features built by the Corps reduce the risk associated with a storm surge that has a one percent chance of occurring in any given year, or a 100-year storm surge. The total construction value of the WRF is an estimated \$141.3 million (WRF northern segment at \$98.2M and WRF southern segment at \$43.1).

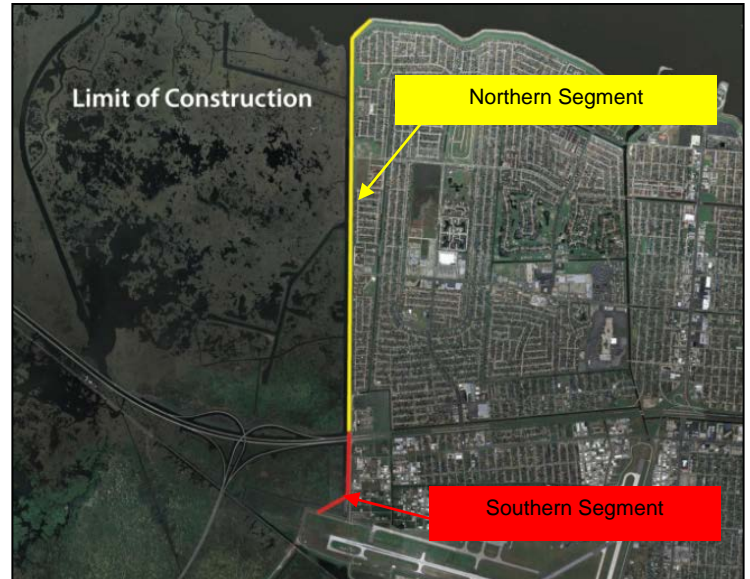
Project Features

The West Return Floodwall project consists of a concrete floodwall more than 3 miles in length that ties-in to the Lakefront levee reaches in Jefferson Parish on the east and the earthen levee features in St. Charles Parish on the west. The new floodwall, built approximately 35 feet west of the existing floodwall, is built to an elevation of between 16 and 17.5 feet above sea level.

The existing WRF remained in place throughout construction of the new T-wall and served as a sound buffer during construction. The new wall is more stable and robust than the old wall with steel pilings driven to depths up to 120 feet below the earth's surface. Rocks and rip rap are placed on the flood side of the new T-wall to prevent erosion.

Project Status

This risk reduction feature was completed in April 2012 and is ready to defend against the 100-year storm event. An additional contract was recently awarded to install a drainage system along the floodwall. This work is underway and will be completed in late 2013.



Existing Wall



New Wall Built



Old Wall Demolished

U.S. ARMY CORPS OF ENGINEERS – TEAM NEW ORLEANS

7400 Leake Avenue, New Orleans, LA 70118 | www.mvn.usace.army.mil

Visit the following links to follow us on Facebook, Twitter and Flickr:

www.facebook.com/neworleansdistrict

www.twitter.com/teamneworleans

www.flickr.com/teamneworleans