



United States Department of Agriculture
National Agricultural Statistics Service

December Crop Production
Executive Summary

Lance Honig, Chief
Crops Branch



Contents

Field Crops	Fruit & Nuts
Cotton	Citrus
Cottonseed	
Sugarcane	



Survey Overview

Florida Citrus

	Objective Surveys (Size and Drop)	Fruit Maturity
Survey Type	Field Observations	Laboratory Tests
Crops Included	All	Oranges, Grapefruit
Sample Size	1,681 groves	418 samples
Collection Period	Nov 8-23	Nov 28-29
Testing Period		Nov 30-Dec 2

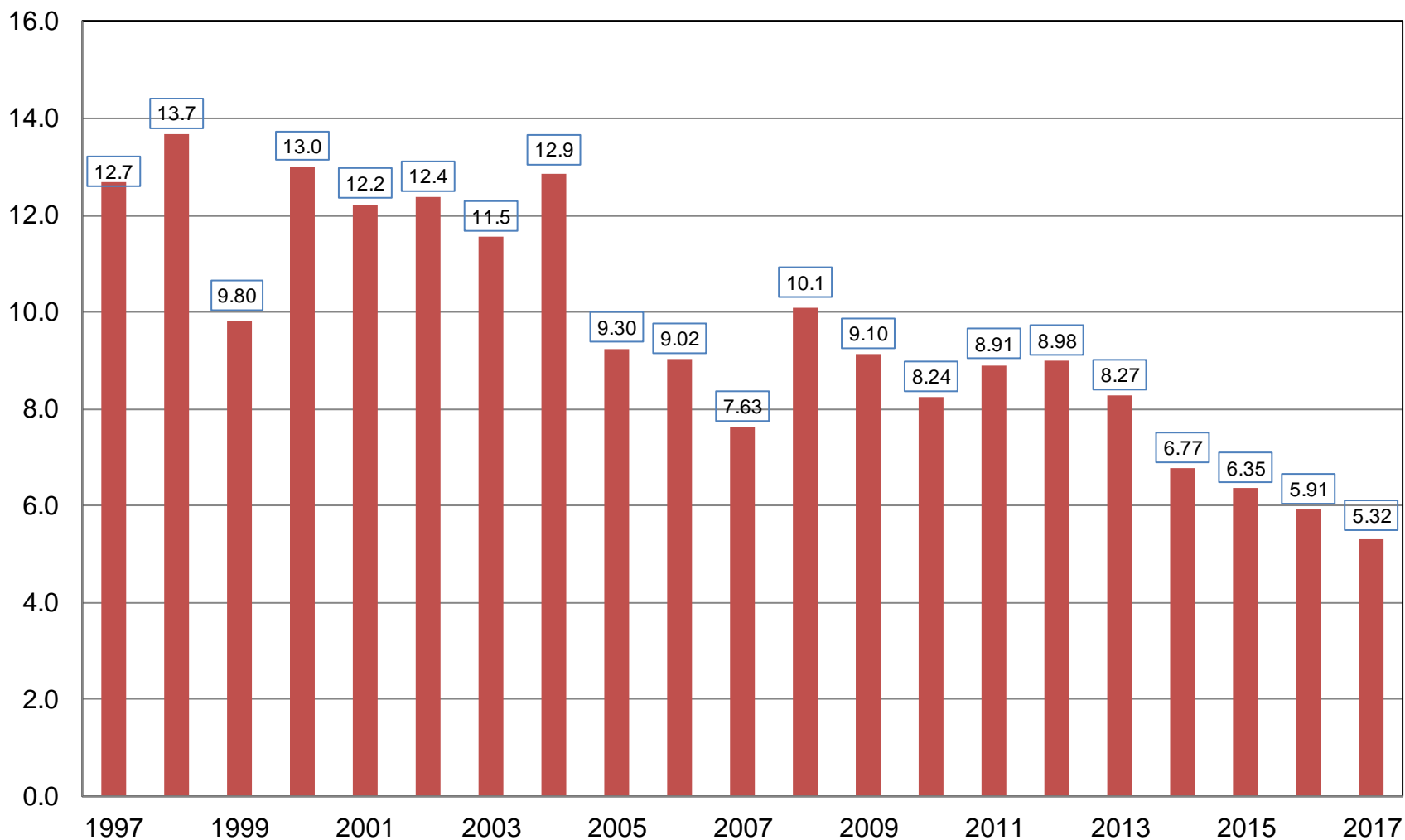


December 2016 Crop Production

Crop	Unit	December 2016	% Change From Previous Forecast	% Change From Previous Season
Production				
Oranges	Mil Tons	5.32	NC	-10.0
Grapefruit	Thou Tons	743	-1.7	-7.5
Tangerines & Mandarins	Thou Tons	990	-0.2	+5.9

Orange Production United States

Million Tons





Survey Overview

	Ginnings	Objective Yield
Crops Included	Cotton	Cotton
Sample Size	~600	1,197
Collection Period	First Week of Dec	Nov 25 – Dec 1



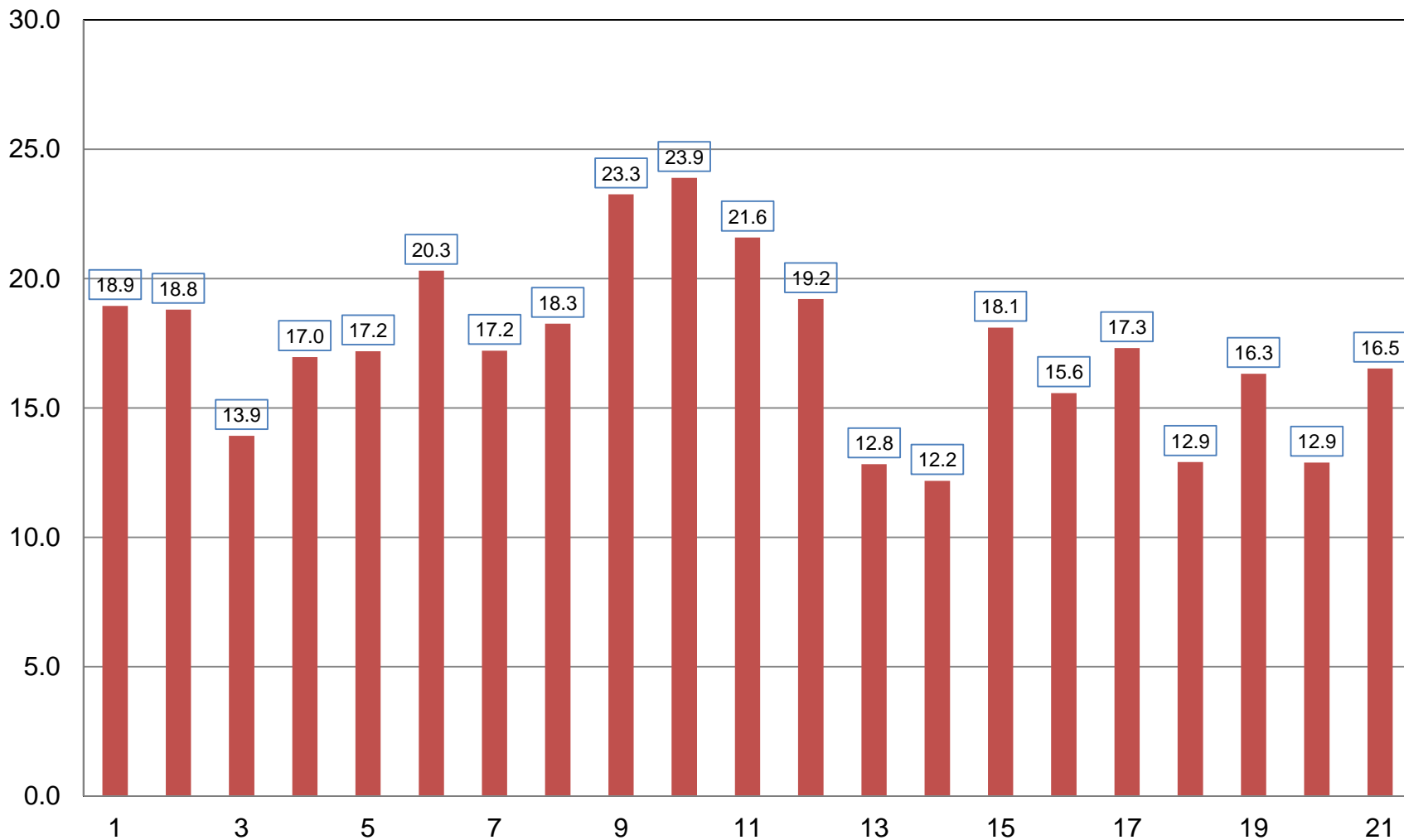
December 2016 Crop Production

Crop	Unit	December 2016	% Change From Previous Forecast	% Change From Previous Season
All Cotton				
Harvested	Mil Ac	9.66	NC	+19.6
Yield	Lb/Ac	821	+2.2	+7.2
Production	Mil Bls	16.5	+2.2	+28.2



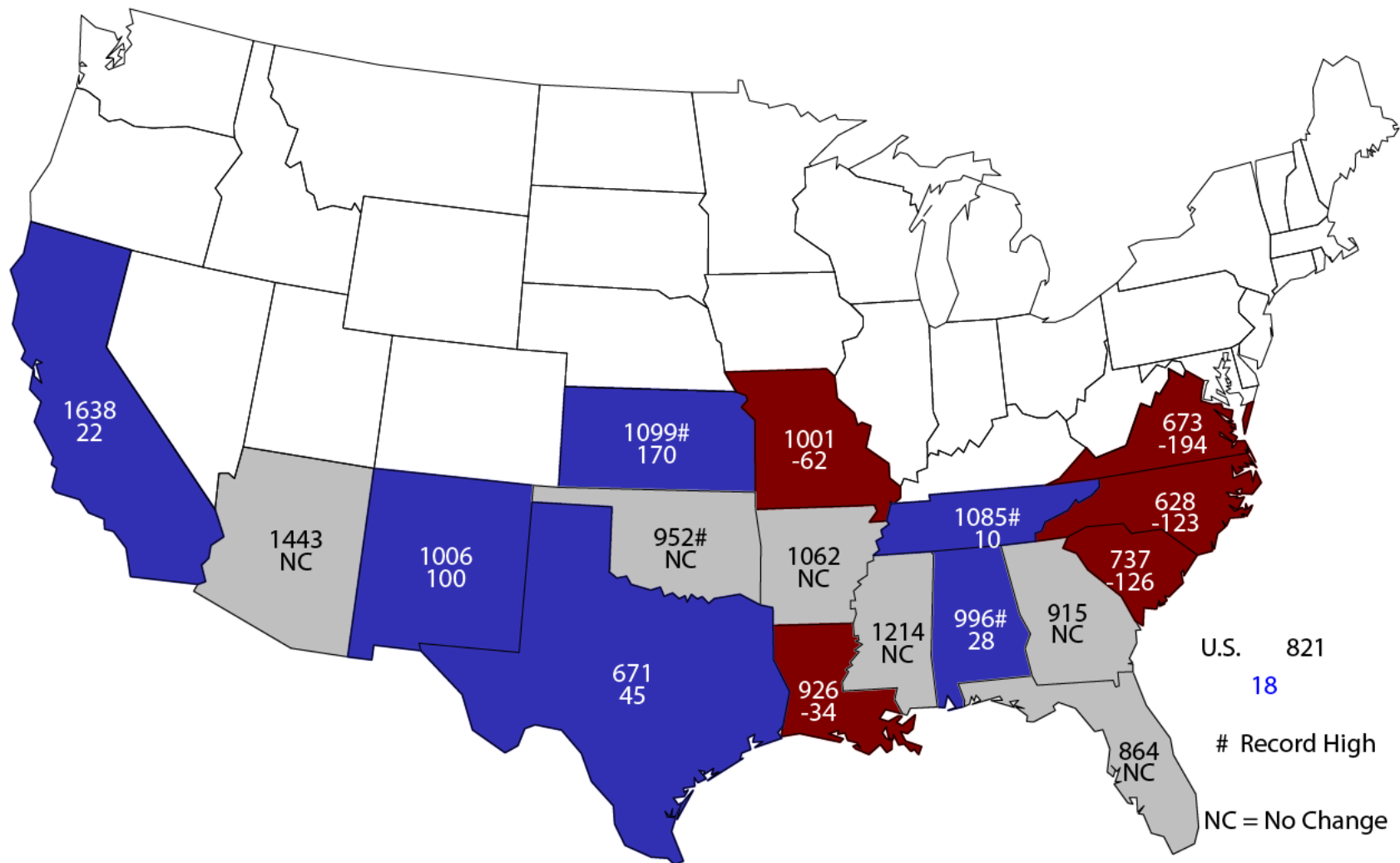
All Cotton Production United States

Million Bales



December 1, 2016 All Cotton Yield

Pounds and Change From Previous Month





December 2016 Crop Production

Crop	Unit	December 2016	% Change From Previous Forecast	% Change From Previous Season
Production				
Sugarcane	Mil Tons	33.7	+0.4	+4.4
Cottonseed	Mil Tons	5.27	+2.2	+30.4



Upcoming Reports

Release Date	Report Title
December 15	County Estimates: Small Grains
December 20	Local Foods
December 23	Cattle on Feed Quarterly Hogs and Pigs
December 29	Agricultural Prices
January 3	CAIR: Cotton System CAIR: Grain Crushing CAIR: Fats & Oils
January 12	Crop Production Crop Production – Annual Grain Stocks Rice Stocks Cotton Ginnings Winter Wheat and Canola Seedings



United States Department of Agriculture
National Agricultural Statistics Service

All Reports Available At
www.nass.usda.gov

For Questions
202-720-2127
800-727-9540
nass@nass.usda.gov