

# Pine Creek Dam Dam Safety Modification Update

Richard Pratt, Commander

Tulsa District

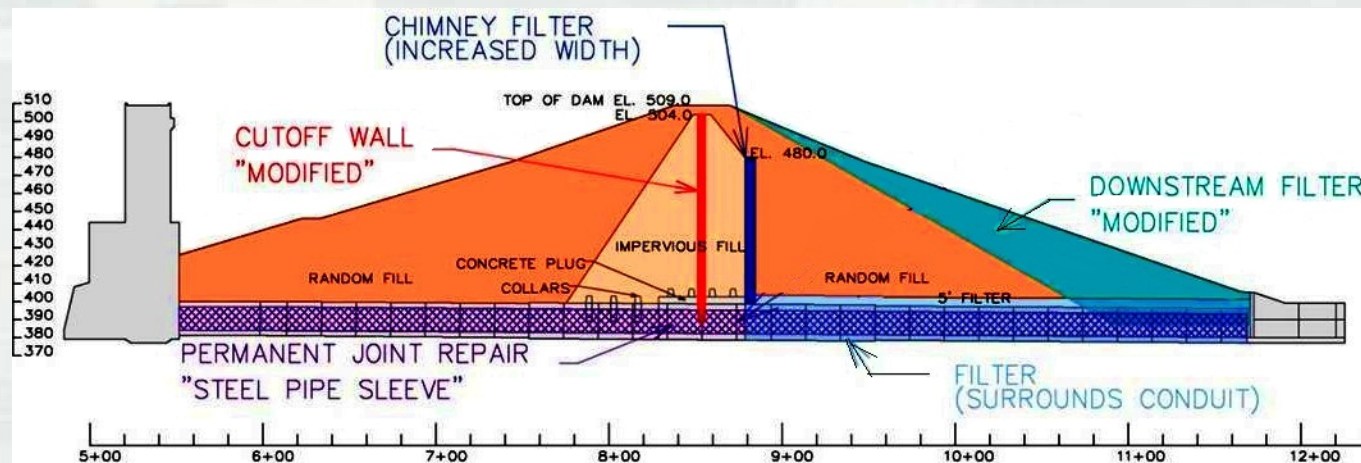
8 July 2014



US Army Corps of Engineers  
**BUILDING STRONG**

# Objectives

- Modify Dam to Address Dam Safety and Operational Issues
- Improve Emergency Action Planning (USACE and Local)
- Return the Dam to Authorized Operations (Elevation 438.0)
- Allow us to look at the best uses of the project for the future.



U.S. ARMY

Pine Creek DSM (July 2014)



# Contract Actions

---

- Construction Laboratory
  - ▶ Award 25 June 2014
- Electrical Line Relocation
  - ▶ Award 25 July 2014
- Bridge Joints Repair
  - ▶ Award 15 August 2014
- Dam Safety Modification Construction Contract
  - ▶ Request for Proposal issued 19 June 2014
  - ▶ Award anticipated October 2014



# Pine Creek Dam Safety Modification Contract

---

- Type of work: Civil – Heavy Construction
  - ▶ Elements: Cut off Wall, Chimney Filter, Downstream Invert Filter and Conduit Steel Liner
  - ▶ Examples of Trades: Operator (Crane w/Boom, Fork Lift, Bull Dozer, Backhoe, etc.), Ironworker, Truck Driver, Laborer, Welder
- Cost range: \$10-15M
- Dates: 19 June 2014 issued (proposals currently due 28 July)
- Details available at FEDBIZOPPS:  
<http://www.fbo.gov>





# Pine Creek Dam Safety Modification Contract



Cut Off Wall Construction



**BUILDING STRONG®**

# Pine Creek Dam Safety Modification Contract



Steel Conduit Liner



Chimney Filter Construction



**BUILDING STRONG®**



# Pine Creek Dam Safety Modification Contract



Downstream  
Filter  
Construction



# Public Outreach

## Future Actions Scheduled:

- Emergency Table Top Exercise in September 2014
- Continue to Work with Local Officials on Local Emergency Planning
- Update Local Emergency Contacts - Annually
- Update Cost Share Partner Semi-Annually
- Public Meeting in Valliant in Jul 2015



**Public Meetings and Site Visits in Valliant, Oklahoma**





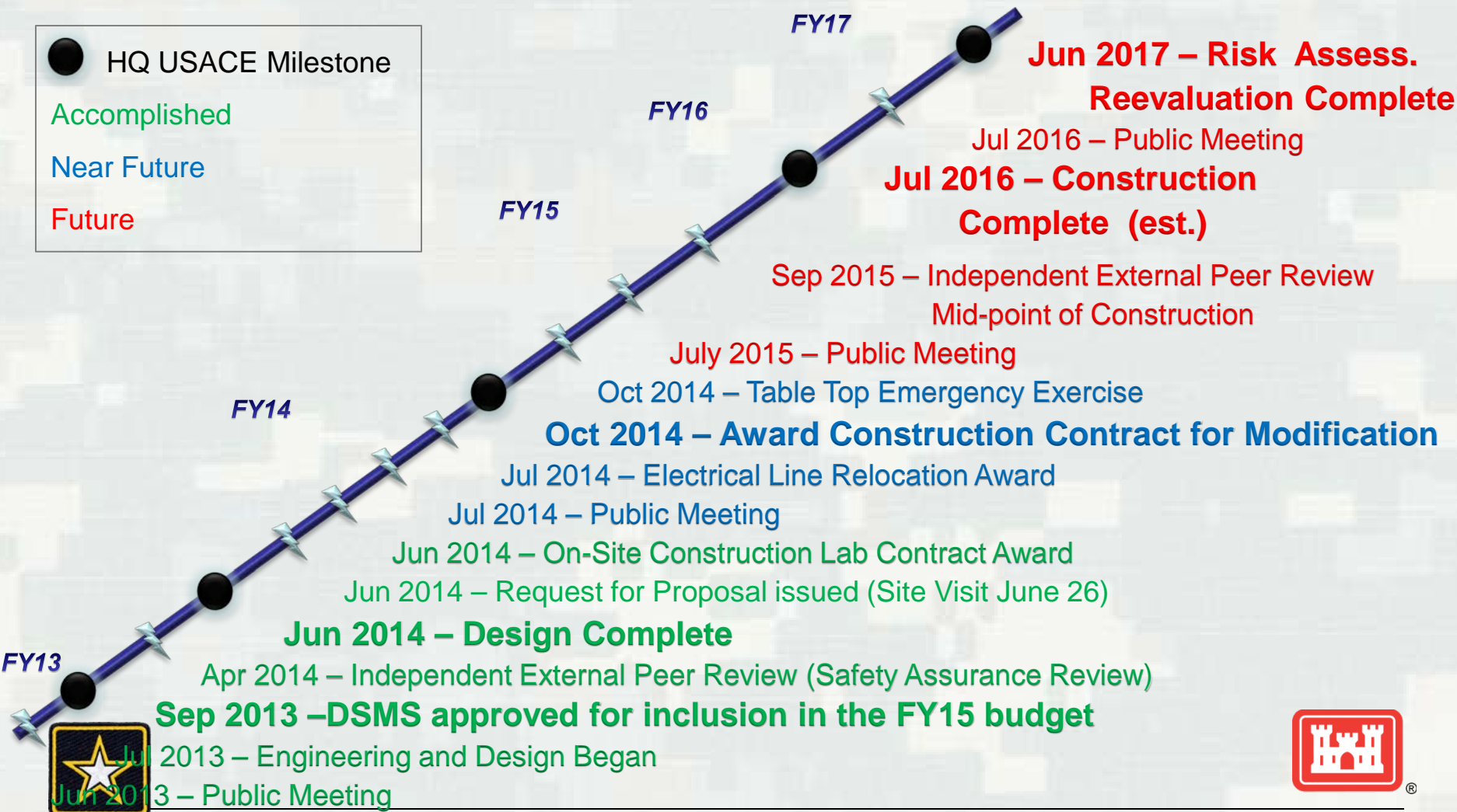
# Timeline

● HQ USACE Milestone

Accomplished

Near Future

Future

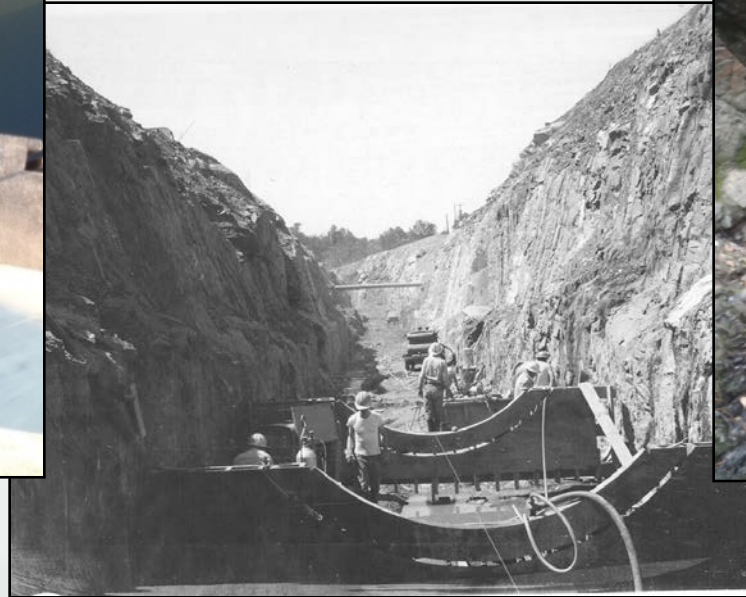
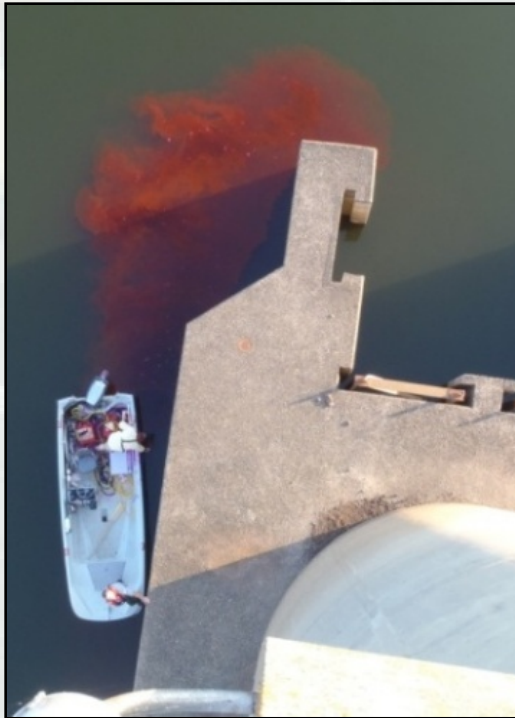


Pine Creek DSM (July 2014)



**BUILDING STRONG®**

# QUESTIONS?



Pine Creek DSM (July 2014)



**BUILDING STRONG**<sup>®</sup>