

NEW JERSEY COASTAL and ESTUARINE LAND CONSERVATION PROGRAM PLAN (CELCP)

DRAFT 2009

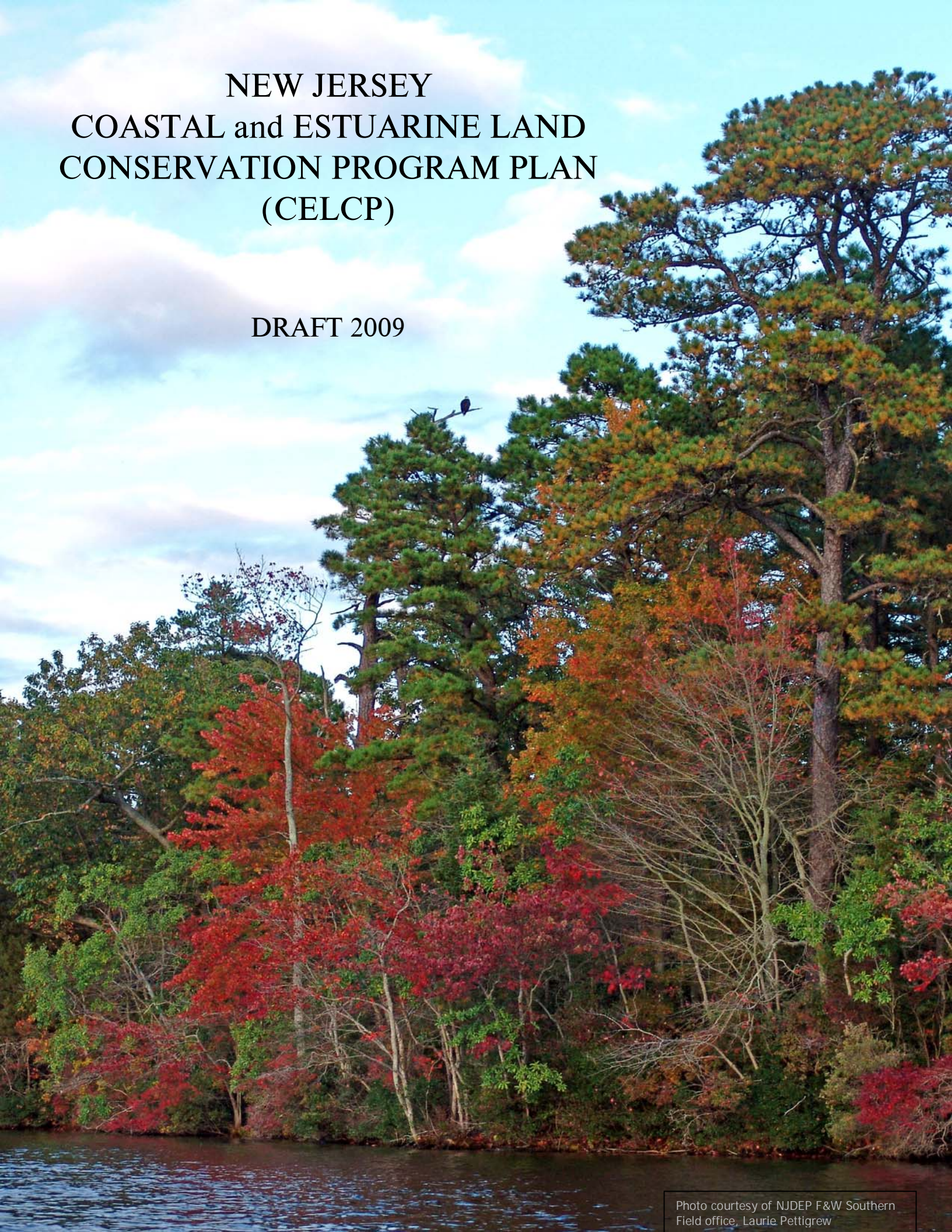


Table of Contents

- I. Introduction**
 - a. Background
 - b. Purpose of Plan
 - c. Geographic Extent of Coastal and Estuarine Areas
 - i. Coastal Boundaries (Map)

- II. Priorities for Coastal and Estuarine Land Conservation in New Jersey**
 - a. Important Land Values and Types
 - b. Threats to Coastal and Estuarine Areas
 - c. Existing Plans
 - i. Green Acres - State Land Acquisition Priorities
 - ii. Green Trust - County and Local
 - iii. National Estuary Program Plans
 - iv. Regional Preservation and Conservation Plans

- III. State CELCP Program**
 - a. Lead Agency
 - b. Eligible Entities
 - c. State Nomination Process
 - Federal Consistency

- IV. Coordination and Public Involvement**
 - a. Interagency Coordination
 - b. CELCP Plan Partners
 - c. Public Involvement

- V. Certification and Approval**

- VI. Appendices**
 - A. Maps of NJ CELCP and corresponding coastal areas
 - B. Map of Municipalities in the NJ Coastal area
 - C. List of Counties and Municipalities and 'coastal region'
 - D. List of CELCP Partners in New Jersey
 - E. Project Solicitation Checklist

Acknowledgements:

Maps and Photos: John D'Agostino, Rob Freudenberg, Dorina Frizzera, Kevin Hassell, NJDEP - Green Acres Program, Division of Fish & Wildlife, Laurie Pettigrew.

DRAGS

Coastal and Estuarine Land Conservation Program (CELCP)
New Jersey - Plan for Implementation

I. Introduction

a. Program Background

The Coastal and Estuarine Land Conservation Program (CELCP) was established by the Department of Commerce, Justice, and State Appropriations Act of 2002. This Act directed the Secretary of Commerce to establish a Coastal and Estuarine Land Conservation Program “for the purpose of protecting important coastal and estuarine areas that have significant conservation, recreation, ecological, historical, or aesthetic values, or that are threatened by conversion from their natural or recreational state to other uses,” giving priority to lands that can be effectively managed and protected and that have significant ecological value.

In Fiscal Year (FY) 2002, the National Oceanic and Atmospheric Administration (NOAA) was directed by Congress to establish guidelines that would make CELCP project selection an objective and nationally competitive process. To meet this directive, NOAA developed CELCP guidelines that were published in final form in June 2003. One of the key provisions of the guidelines is the requirement that any state that wants to participate in this voluntary program prepare a Coastal and Estuarine Land Conservation Plan (CELC Plan or Plan). This CELC Plan must be submitted to NOAA for review and approval prior to the state becoming eligible to submit grant applications under the CELCP.

b. Purpose of Plan

In order to qualify to receive funds under the national competitive Coastal and Estuarine Land Conservation Program, a coastal state must develop and submit to NOAA for approval, a Coastal and Estuarine Land Conservation Plan. The CELC Plans approved by NOAA will provide an assessment of priority conservation needs and clear guidance for nominating and selecting coastal and estuarine land conservation projects within each state. NOAA encourages states to make use of existing and appropriate land conservation planning efforts already conducted in the state.

The New Jersey Coastal and Estuarine Land Conservation Plan (New Jersey CELC Plan) is not intended as a master plan or preference list for state land acquisition. The New Jersey CELC Plan is intended to be a management tool that works in concert with existing state, county, local and non-governmental acquisition programs to endorse coastal conservation projects and to leverage and maximize funding opportunities through acquisition and land management partnerships. The New Jersey Coastal Management Office (CMO), as the New Jersey CELCP lead, envisions a CELCP planning process where the CMO will coordinate with the New Jersey Green Acres Program, local and county governments, land trust organizations and other federal and state agencies to nominate unique or threatened coastal habitat projects to NOAA in response to competitive funding opportunities. The New Jersey CELC Plan will use existing resource management and protection plans, on-going

conservation program plans, and other resource evaluations to identify priority projects within the coastal zone for land conservation.

DRAFT

c. Geographic Extent of Coastal and Estuarine Areas

NOAA Guidance defines coastal and estuarine areas as those areas found in a coastal state that are within the state's coastal zone, 'as designated in the state's federally approved coastal management program under the CZMA or within the state's coastal watershed boundary as described in NOAA's Coastal Zone Boundary Review (October 1992).'

For the purposes of the New Jersey Coastal and Estuarine Land Conservation Program the state's federally approved coastal management program boundary will be used. Only projects that meet one of the two criteria below will be considered for nomination.

1. Projects located within the CAFRA area and containing and/or bordering tidal waters and their shores; and
2. Projects located outside the CAFRA area and within a coastal watershed and containing and/or bordering tidal waters and their shores.

The geographic extent of the New Jersey CELCP was reviewed in the context of the [New Jersey Coastal Zone boundary](#) (map found in Appendix A) as described in the state's federally approved Coastal Management Plan. A consideration in defining the CELCP boundary is the recognition that the strong regulatory nature of New Jersey's Coastal Management Program affects land conservation efforts –the land is constrained by land use regulations and not perceived as being in immediate risk of development. Also taken into consideration is the proximity of land to water as the amount of shoreline increases the value of the property (regardless of the regulations) and may price it out of reach as a conservation acquisition. Traditionally, these factors have contributed to greater emphasis on land acquisition outside of the coastal area; leaving critical coastal habitats vulnerable to incremental subdivision and development patterns that fall below the regulated thresholds. The CELCP provides an opportunity for the state, county and local governments to leverage and maximize funds for acquisition of lands in the coastal zone.

New Jersey's coastal area encompasses three 'geographic regions'.

- [The northern waterfront](#) [map title- Raritan Bay to Hudson River];
- The Atlantic coast (including back bay areas and 'mainland and tidal river' systems)
 - [Northern Atlantic Coast](#) [map title Barnegat Inlet to Raritan Bay];
 - [Southern Atlantic Coast](#) [map title Cape May to Barnegat Inlet];
- The [Delaware Bay](#) [map title Delaware Memorial Bridge to Cape May]; and the [Delaware River](#) (including tidal river tributaries) [map title Trenton to Delaware Memorial Bridge].

While each of these regions are within the coast, the pattern of development including land use, land cover and population density creates different stressors on the resources; varies the sensitivity and abundance of coastal habitat types; and impacts the opportunities to as well as the cost of acquisition.

- [Appendix A](#) contains maps of each of the 'geographic regions'. For display purposes the 'Atlantic Coast' has been divided into two segments (Northern Atlantic Coast and Southern Atlantic Coast). *Text denotes a *hyperlink*.
- Included in [Appendix B](#) is a map of New Jersey and the municipalities that contain tidal rivers and their shores and would be eligible to participate as a CELCP partner should they submit a project in the CELCP area. [Appendix C](#)

is a listing by county of municipalities that coincides with the 'geographic regions' identified in the New Jersey Coastal Management Program's approved Plan.

DRAFT

II. Priorities for Coastal and Estuarine Land Conservation in New Jersey

a. Important Land Values and Types

The New Jersey coastal area exhibits diverse habitats, including intertidal and subtidal areas, beaches and foredunes transitioning inland to dune fields, shrub zones and maritime forest. The estuarine habitats include salt marshes, sand and mud flats, sea grass beds, bays and rivers. In addition, the freshwater tidal habitats include coastal lakes, rivers, marshlands and coastal forests. Each of these coastal habitats contributes to the character and economy of the New Jersey coastal zone.

The coastal area of New Jersey is host to many rare, threatened and endangered species of flora and fauna, including reptiles, amphibians, and avian species. The diversity of New Jersey's coastal landscape also serves to attract residential, commercial, industrial and recreational development.

b. Threats to Coastal and Estuarine Areas

The greatest threat to New Jersey's coastal zone and its resources is human activity. Human activities include residential, commercial and industrial development; extractive uses including agriculture, and commercial or recreational harvesting of resources. These activities can result in forest fragmentation, disruption of wildlife corridors, and degradation of potable water aquifers and recharge areas, decreased vegetative cover, habitat loss and quality impacts to near shore waters and their shores.

Emerging issues such as sea level rise, storm vulnerability, inundation, climate change impacts on sensitive habitats and the impacts of nonpoint source pollution on coastal areas has led to a greater emphasis on conserving coastal habitats. While there is an appreciation of the value of these habitats for recreation and their natural resources, there is increasing recognition of the natural capital value of these areas for the services they provide - stormwater retention, filtering, wetlands buffers to storm surges and resulting inundation to name a few. It is also becoming evident that these lands may not be protected through regulation alone and that acquisition is an important tool necessary for conserving the services provided by these limited resources.

Existing Plans

As noted previously, the New Jersey CELC Plan is not intended as a coastal land acquisition master plan, primarily because the diversity of New Jersey's coastal areas makes it difficult to single-out any one area for priority. Instead, it is proposed that the 'characterization reports' prepared by various federal, state, county, municipal, land trust and other non-governmental environmental organizations, that are specific to the various coastal regions of the state, act as the foundations for identifying 'coastal and estuarine' land acquisition targets. Many of these organizations and agencies use their 'characterization reports' as a tool to identify and protect wildlife habitats and maintain open space that can also provide recreational opportunities and protect scenic and cultural landscapes. The evaluation tools developed to identify sites for these 'characterization reports' consist of a common set of criteria but are representative and weighted to the individual region. These criteria include (but are not limited to):

Biogeographical Representation: whether the site represents the ecological conditions of the coastal zone in which it is located; whether the site fills a void in biogeographic representation in the state.

Ecosystem Representation: whether the site encompasses an entire ecological unit and/or represents a significant component of the coastal ecosystem in light of the types of geomorphic features and biotic communities found in the region.

Ecological Characteristics: whether the area's ecological characteristics contribute to the quality of the estuarine environment through its biological productivity, diversity of flora and fauna, and/or other demonstrated ecological functions, features and values.

Naturalness: whether the site is relatively unaffected by past and present human activities and approximates a natural ecological unit where ecosystem processes function 'naturally' (and can be sustained) or are in need of restoration.

Management: whether the site is available for acquisition (fee simple, easement, conservation restriction), land-owner willingness to sell or restrict; probability/imminence of conversion and or development; existing regulatory controls (that offer some protection/conservation); non-point and/or off-site impacts; long-term management (who will hold title and how will the site be managed and/or maintained).

Public Access: whether the site will provide coastal access for recreation and/or conservation management purposes.

It is proposed that the NJCELP 'priorities' coincide with the priorities of existing public and private conservation efforts that protect lands and resources important to maintaining the natural character and ecological functions of the state's coastal areas. The following is a summary of existing 'conservation' or 'characterization' plans for New Jersey's coastal areas that were prepared by state or federal agencies, or in which state or federal agencies played an instrumental role.

The New Jersey Coastal Management Program Plan approved in full by NOAA in 1980 clearly identifies both coastal and estuarine resources of significant concern, and Geographic Areas of Particular Concern. During its development the New Jersey Coastal Management Program Plan underwent an exhaustive public process to identify and develop policies and regulations to protect, conserve and enhance coastal and estuarine resources.

The development of land use regulations and resource specific policies has worked toward protecting coastal resources and land areas from the impacts of development and over-use. The Coastal Management Program Plan also identified critical coastal areas as Geographic Areas of Particular Concern and special areas that are 'so naturally valuable or sensitive to impact as to merit focused attention or special management'. The New Jersey Coastal Management Program worked through other programs within the NJDEP (the Divisions of Parks and Forestry to designate lands through the Natural Areas Program and the Division of Fish and Wildlife to designate Wildlife Management Areas) to prioritize and secure the acquisition of these critical coastal areas.

*Specific special areas are identified in the section on the state nomination process.

The New Jersey Green Acres Program is the agency within the New Jersey Department of Environmental Protection (NJDEP) responsible for facilitating land acquisition for state and local agencies. Created in 1961 to meet New Jersey's growing recreation and conservation needs the Green Acres Program received overwhelming approval from New Jersey's voters. From 1961 through 1995 nine bond issues, earmarking over \$1.4 billion for land acquisition and park development were approved and implemented. On November 3, 1998, New Jersey voters approved a referendum creating a stable source of funding for open space, farmland, and historic preservation and recreation development, and on June 30, 1999, the Garden State Preservation Trust Act was signed into law. The law established, for the first time in history, a stable source of funding for preservation efforts. This referendum was reaffirmed by New Jersey voters in November, 2007, continuing the dedication of funds for the acquisition of lands for conservation, open space and recreation.

The Green Acres Program is committed to providing parks and outdoor recreation facilities, urban wildlife preserves, and quality open spaces in New Jersey's cities, suburbs and other developed communities as well as preserving unique natural habitats throughout the State. To further this goal, Green Acres provides assistance through the Local Assistance Program to local and county governments and nonprofit organizations to acquire and develop parks, conservation areas and outdoor recreation facilities in their communities. The Green Acres Program also purchases land (in fee simple or through easements) to protect environmentally sensitive open space, water resources and other natural and historically significant open space. These lands become part of the statewide system of parks and forests, wildlife management and natural areas. More than 1.3 million acres of open space and farmland have been preserved in communities across the State.

While the Green Acres Program had previously implemented a priority ranking system, P.L.2002, Chapter 76 (signed into law on August 29, 2002) amended the Garden State Preservation Trust Act to prioritize land purchases that protect the State's water resources and critical plant and wildlife habitat. The Green Acres Program subsequently formalized the State Open Space Acquisition Priority System, including guidelines for the evaluation and priority ranking of lands to be acquired by the State for

recreation and conservation purposes using funds from the Garden State Preservation Trust or other sources. The amendment also called for the weighting of specific criteria being evaluated. Criteria for evaluating water resources protection value received three times the weight; criteria for assessing the importance of protecting flood prone areas received twice the weight of the other criteria used to judge the relative merits of potential acquisition projects.

Under this priority system for acquisition of state open space projects, properties will be evaluated using 11 factors. Each factor and sub-factor has been assigned a maximum number of points. Point assignments are based upon the criteria presented under each factor and sub-factor (where appropriate). The total score is derived by adding the points assigned under the various factors. This total score is used as the basis for comparing the relative merits of acquiring individual properties for open space and conservation purposes. In addition, the Green Acres Program coordinates acquisitions with various 'program priority lists' (National Estuary Programs, properties of significance identified by the Natural Lands Program, the Division of Fish and Wildlife and the Division of Parks and Forestry).

The projects funded through the Green Acres Program do not require matching funds if they are held by a state agency. Those projects funded through the Local Assistance Program require a match or are in the form of a low interest loan. Projects considered for acquisition utilizing CELCP funds require a 1:1 match. This match will (regardless of partner - state, local or not-for-profit) be met (wholly or in part) through the Green Acres Program. This requires the property to have been evaluated against this 11 - factor process, have a willing seller and have all appraisals and legal requirements consistent with the rules governing the Green Acres State Acquisition Program.

Every five years the Green Acres Program prepares the Statewide Comprehensive Outdoor Recreation Plan (SCORP) to provide statewide policy direction on open space and recreation issues. The SCORP serves as a status report, strategic plan and guide for natural and recreational resource protection and planning statewide.

The most recent SCORP (2008) has been prepared to meet goals consistent with those of the CELCP. These include:

- To preserve a sufficient amount of open space for current and future public recreational use and for the conservation of natural resources important to protecting New Jersey's biodiversity and the quality of life in New Jersey.
- To encourage coordinated open space and recreation planning, acquisition and development initiatives of local governments and conservation organizations.
- To effectively use funds from the Garden State Preservation Trust, Land and Water Conservation Fund, Forest Legacy Program, Pinelands Section 502 Program and other sources of funding which may become available.

The SCORP identifies New Jersey's coastal zone as a State Resource Area. Its findings are based on research and public participation in the planning process which strongly influence the development and priority concerns of the New Jersey CELC Plan. The findings presented in the 2008 SCORP include:

- "Open space preservation provides many amenities including water resource protection, wildlife habitat, assessed recreation, agriculture, and tourism.

- 252 local governments are assessing a tax for land preservation, park and recreation projects and historic preservation in 2007, collecting \$330 million annually.
- The State shall continue to make the protection of water resources, preservation of biodiversity and the provision of park and recreation opportunities a statewide priority.
- There is a need to preserve 700,000 acres of high value natural resources lands statewide.”

An additional benefit of coordinating with the Green Acres Program is that they can not only provide the match requirement for federal funds but also assume the planning and program administrative costs associated with land acquisition. The requirements of the Green Acres Program also include a State House Commission review process to prevent the sale, transfer or conversion of lands acquired with Green Acres funds or listed on the Recreation and Open Space Inventory (ROSI); a public access provision; and, specific legal requirements including landowner agreements, appraisals and appraisal certification, sale price negotiation, legal review and property closing and transfer arrangements.

Jacques Cousteau National Estuarine Research Reserve (JC NERR) - National Estuarine Research Reserve management plans approved under the CZMA: The Jacques Cousteau National Estuarine Research Reserve (JC NERR) plays a significant role in providing the research and education needed to support not only the Mullica River / Great Bay watershed (reserve area), but other state coastal areas as well.

“Although the JC NERR is composed of public lands, Rutgers-IMCS recognizes the importance of long range planning for the acquisition of unique lands that possess critical habitat within the Mullica River/Great Bay watershed. Rutgers-IMCS and Center for Remote Sensing and Spatial Analysis have been working with the Trust for Public Land to complete a study and gap analysis of property within the watershed that would be of conservation or public access value. Rutgers-IMCS acknowledges the work of the USFWS and non-profit organizations such as the Trust for Public Land in the identification of unique conservation and public access sites.”

The Meadowlands Conservation Trust (MCT): was established in 1999 by the New Jersey legislature. MCT is one of only two state government land trusts in New Jersey. The Trust acquires land through either fee simple acquisition or conservation easements and permanently protects and preserves environmentally sensitive wetlands, waterways and open space in the Hackensack River Watershed and Meadowlands region. New Jersey residents benefit from flood protection, clean water, wildlife habitat and passive recreation that such ecologically valuable tracts offer. The Trust’s activities primarily concern New Jersey’s portion of the Hackensack River whose head waters are located in the State of New York and flow south to Newark Bay. New Jersey’s stretch of the river is 31 miles long. MCT’s part of the Hackensack River Watershed is approximately 85 square miles in total; spans both Bergen and Hudson County and encompasses 54 municipalities. This land conservation organization works with local, county and government agencies to acquire and identified as critical to maintaining the natural character and ecological functions of the New Jersey Meadowlands District.

National Estuary Programs: Three National Estuary Programs have been designated within New Jersey's coastal waters. Two of the estuary programs, the Harbor Estuary Program and the Delaware Estuary Program are multi-state programs. Therefore, their conservation plans are 'regional' in scope. Their proposed acquisition plans include sites that mirror or complement sites in the adjacent state. New Jersey has (in the past) coordinated with adjacent states in acquiring sites that provide regional continuity.

NY/NJ Harbor Estuary Program: New York/New Jersey Harbor Estuary Conservation Plan, prepared by the subcommittees for Habitat, Harbor Herons and Stewardship; Tributaries to the Arthur Kill, prepared by the New Jersey Conservation Foundation

Barnegat Bay Estuary Program: The Century Plan, prepared by the Trust for Public Land identifying one hundred conservation sites in the Barnegat Bay Watershed.

Delaware Bay Estuary Program: Charting a Course for the Delaware Bay Watershed, prepared by the New Jersey Conservation Foundation.

Maurice River Wild and Scenic River Program: The Maurice River Wild and Scenic River Comprehensive Conservation Management Plan identifies resources and habitats of particular concern to maintaining the natural character and ecological functions of the Maurice River system. Conservation through acquisition in partnership with the local, county, state and federal agencies and non-governmental land trusts as well as land-owner preservation efforts have been identified as conservation tools.

Great Egg Harbor Wild and Scenic River Program: The Great Egg Harbor Wild and Scenic River Comprehensive Conservation Management Plan identifies resources and habitats of particular concern to maintaining the natural character and ecological functions of the Great Egg Harbor system. Conservation through acquisition in partnership with the local, county, state and federal agencies and non-governmental land trusts as well as land-owner preservation efforts have been identified as conservation tools.

The following are examples of plans prepared by land trust and other non-governmental organizations.

The Nature Conservancy: This non-governmental land conservation organization works with local, county and government agencies to acquire (fee simple or easement) lands identified as critical to maintaining the natural character and ecological functions of coastal areas in New Jersey. The effort of this organization is statewide.

The NY/NJ Baykeeper Organization: This non-governmental land conservation and environmental advocacy organization has been the lead New Jersey coordinator for acquiring NY/NJ Harbor Estuary Program natural resource and habitat priority sites. Baykeeper has partnered with the State of New Jersey, New Jersey Meadowlands Commission, Port Authority of NY/NJ, NJDEP, Hudson County, Monmouth County, Middlesex County, Essex County and numerous conservation groups and

municipalities to preserve coastal natural habitat in the most densely populated region of New Jersey's coast.

Trust for Public Land: This non-governmental land conservation organization works with local, county and government agencies to acquire (fee simple or easement) lands identified as critical to maintaining the natural character and ecological functions of coastal areas in New Jersey. The effort of this organization is statewide.

New Jersey Conservation Foundation: This non-governmental land conservation organization works with local, county and government agencies to acquire (fee simple or easement) lands identified as critical to maintaining the natural character and ecological functions of coastal areas in New Jersey. The effort of this organization is statewide.

Delaware and Raritan Greenway: This non-governmental land conservation organization works with local, county and government agencies to acquire (fee simple or easement) lands identified as critical to maintaining the natural character and ecological functions of coastal areas in New Jersey. The effort of this organization is specific to the Delaware River (tri-state) region from Tacony/Palmyra to Hancock, New York.

Monmouth Conservation Foundation: This non-governmental land conservation organization works with local, county and government agencies to acquire (fee simple or easement) lands identified as critical to maintaining the natural character and ecological functions of coastal areas in New Jersey. The effort of this organization is specific to Monmouth County, New Jersey.

III. New Jersey Coastal and Estuarine Land Conservation Program

a. Lead Agency

The June 2003 *Coastal and Estuarine Land Conservation Program Final Guidelines* identify the State lead agency as:

“The agency or entity responsible for coordinating the establishment and implementation of the CELCP at the state level. The lead agency will be presumed to be the lead agency designated for implementing the state’s coastal management program, as approved pursuant to the CZMA, unless otherwise designated by the Governor. If a state’s coastal management program does not wish to assume the lead role, the Governor may designate as the lead agency another state agency with authority to plan, acquire or manage land for conservation purposes.”

The lead agency for the New Jersey CELCP is the Coastal Management Office (CMO) within the Commissioner’s Office of Policy, Planning and Science in the NJDEP. The CMO is also the lead for implementing the state’s Coastal Management Program. Also within the NJDEP are the New Jersey Green Acres Program (responsible for state land acquisition) and the Divisions of Parks and Forestry and Fish and Wildlife (responsible for state land management). CMO staff will coordinate with these NJDEP programs to ensure coordination and leveraging of the state’s coastal program objectives and the state’s coastal land conservation efforts.

b. Agencies Eligible to Hold Title to Properties Acquired Using CELCP Funds

The June, 2003 *Coastal and Estuarine Land Conservation Program Final Guidelines* identify who may receive funds and hold title to land acquired through the CELCP.

“2.4 NOAA may make financial assistance awards to eligible coastal states, including the state’s lead agency for implementing the CELCP, the state’s coastal management program or its National Estuarine Research Reserve(s). The recipient may in turn allocate grants or make sub-awards to other state agencies, local governments as defined at 15CFR 24.3, or entities eligible for assistance under section 306A(e) of the CZMA (16 USC 1455a(e)) to carry out approved projects. NOAA may at its discretion and in consultation with the applicable coastal state, make grants directly to any of these eligible entities in order to expedite completion of an approved project. The recipient, or other appropriate public agency designated by the recipient, will hold title to the land, or interests in land, in perpetuity. NOAA will not make grants under the CELCP to non-governmental organizations unless otherwise directed by Congress.”

16 USC § 1455a (e). Coastal Resource Improvement Program

“Allocation of grants to local governments and other agencies: With the approval of the Secretary, an eligible coastal state may allocate to a local government, an area wide agency designated under section 204 of the Demonstration Cities and Metropolitan Development Act of 1966 [42 USC § 3334], a regional agency, or an interstate agency, a portion of any grant made under this section for the purpose of carrying out this section; except that such an allocation shall not relieve that state of the responsibility for ensuring that any funds so allocated are applied in furtherance of the state’s approved management program.”

The CMO as the CELCP lead will work directly with the Green Acres Program to submit applications for the acquisition of lands that will be held and managed in their entirety by the state/DEP; and/or where local or county agencies are receiving grants or loans through the Green Acres Program as partners in a land acquisition project. Land management and ownership may be shared by the local entity and a state agency or may be entirely assumed by the local entity. The CMO will also entertain projects submitted by eligible local entities if they are not partnering with or receiving funds through the Green Acres Program. In this instance the CMO will submit the CELCP applications on behalf of the county or municipality. If successful, the CMO will continue to work with the county or municipality to ensure that the federal CELCP requirements are met.

The CMO encourages local communities to partner with the Green Acres Program in order to leverage available state, federal and local funds and to maximize the benefit of the resources provided by the Green Acres Program for project development and contract administration. This collaboration allows the available federal CELCP funds to be directed entirely to acquisition.

The CMO also recognizes the effort of non-governmental organizations and land trusts in the conservation of critical coastal habitats. The CMO encourages these entities to suggest parcels for acquisition and to partner with the Green Acres Program and/or municipal and county governments in the acquisition of coastal land sites. This type of partnership increases the resources available for acquisition and often expedites the acquisition of sites that may be in jeopardy of development.

The following agencies are eligible to hold title to property or easements acquired using CELCP funds within New Jersey.

- State of New Jersey
- New Jersey Department of Environmental Protection
 - ♣ Division of Fish and Wildlife
 - ♣ Green Acres Program (will hold easements)
 - ♣ Office of Natural Lands Management (Natural Lands Trust)
 - ♣ Division of Parks and Forestry
- New Jersey Meadowlands Commission
- New Jersey Pinelands Commission

- The coastal counties (17) and coastal communities (245) having land within the New Jersey Coastal Zone Boundary as described in the *New Jersey Coastal Management Program - August 1980 - Final Environmental Impact Statement*.
- Not-for profit organizations and/or land trusts may also hold title to land in *partnership* with the NJDEP as long as there is a *shared interest* in the lands acquired.

DRAFT

c. **State Nomination Process**

As noted previously the CMO maintains an e-mail correspondence list with members of a CELCP working group. Members of this working group and/or representatives from any of the coastal municipalities, counties or organizations working in the coastal area of New Jersey may submit a proposed acquisition site at any time as a recommendation for consideration as a CELCP project.

When the CMO receives notice from NOAA of CELCP funding availability an e-mail will be broadcast to the working group and an announcement placed on the NJ Coastal Management Program web page identifying the publication of the CELCP project solicitation. For the projects previously submitted for consideration, an update of the project status will be requested. Status inquiries try to determine whether the project has been acquired or is still available; whether there is additional information (appraisals, environmental audit, imminence of conversion or development); and, how far through the acquisition phase the project might be.

The CMO has prepared a **project solicitation checklist** ([Appendix E](#)) that will be available on the Coastal Management Program's webpage. The checklist is intended as a summary record of proposed projects. The CMO retains a list of proposed projects received from municipal, county and/or non-governmental entities, and those currently being considered for conservation by the Green Acres Program (state and Local Acquisition Program/Green Trust Program funding).

The proposed projects must meet at least one of the following three objectives to be eligible for consideration as a candidate project:

- Habitat protection for lands or adjacent waterways that help maintain healthy populations of plants and animals indigenous to the coast, including lands containing rare and endangered species, as well as, relatively large blocks (relative term based on region of NJ coastal area) of undeveloped lands that support wildlife populations.
- Provide coastal access for recreation and/or conservation management purposes, including lands that provide 'working' access to coastal and marine resources (working waterfronts).
- Provide scenic and or cultural features and areas that protect the scenic qualities of the coast, and help preserve special and unique historical resources and cultural features (specific to the coast).

Next, additional generic criteria are taken into consideration to narrow the list of candidate sites that are likely to be ready for acquisition within the CELCP grant period if funded. The CMO would like to be in a position to submit up to three projects, each representing one of the described coastal regions of New Jersey (Northern coastal area, Atlantic coastal area, Delaware Bay and River area) for consideration by NOAA for CELCP funding. It is recognized that CELCP funding is a nationally competitive process. Therefore, any projects submitted for consideration must compete well in the national arena. Additional criteria include:

- Is the project site on a pre-existing plan;

- Is the project site before Green Acres for review;
- Does the site contribute to a greater continuity of the landscape (an in-holding, or addition to an already preserved site);
- Does the site have acquisition and management partners identified;
- The status of the proposed acquisition (how much work has been done to date or when it is proposed in relation to the CELCP solicitation and potential funding):
 - Willing seller agreement;
 - Environmental review;
 - Appraisals.
- Is the parcel threatened by conversion or development;
- Likelihood that the parcel will be acquired regardless of federal funding.

Once the previously identified criteria are applied to the sites proposed for CELCP consideration additional site specific criteria (listed below) are applied to identify the sites for which a full proposal (application) will be developed. As noted above, the goal is to submit up to three applications for any one CELCP funding round. However, if two sites from one region of the New Jersey coast warrant further consideration applications will be submitted on their behalf in lieu of three applications from different areas of the coast. If a site does not receive CELCP funding and is not acquired with state (or other) funds it will be evaluated for resubmission in a future CELCP round.

- **Is acquisition of the project site** consistent with New Jersey Coastal Management Program Goals, Policies, Regulations
 - Federal consistency review
 - For applications submitted on behalf of the NJDEP, a federal consistency review will be conducted by the CMO to ensure that the land acquisition is consistent with the Coastal Management Program's enforceable policies;
 - For applications submitted on behalf of a local or county government independent of Green Acres funding and where appraisals will be conducted and certified through the municipal, county or non-governmental entity, a Federal Consistency determination will be required. The request for a Federal Consistency determination will be processed through the Division of Land Use Regulation to ensure that the values used to determine fair market price are consistent with the enforceable policies of the NJ Coastal Management Program. [i.e.: fair market price set on a parcel as developable when the NJ Coastal Management Program clearly limits development due to environmental sensitivity, presence of threatened or endangered species habitat, or other environmental constraint.
- Types of lands/values to be protected

This criterion will be based on the documented resources located on the property. Lands with high conservation priority (as described in the existing plans) and sites containing rare, endangered, or threatened species would be given greater consideration. Any area providing critical or essential habitat elements for species of concern would also be given greater consideration.

- Shoreline environments
 - Beaches
 - Dunes
 - Other coastal environments
 - Tidal rivers
 - Coastal bays
 - Coastal wetlands
 - Unique coastal environments (Sea level fens)
 - Maritime forest
 - Rare species habitats
 - Large undisturbed habitats
 - Buffer areas
-
- Lands which can be effectively managed.

This criterion evaluates whether the proposed project(s) add to existing parks and wildlife management areas and refuges under management and long-term stewardship by municipal, county, state and federal organizations. Priority projects would be in-holdings and adjacent lands and or projects which are protected through a conservation easement and shared stewardship with a local partner such as a land trust with a demonstrated ability and history of sound stewardship.

The CMO will coordinate with the Green Acres Program and other CELCP partners to solicit candidate sites. The CMO will conduct the primary review of sites based on the information provided with the initial solicitation. Representatives from the CMO and the Green Acres Program will then review each site proposed against the noted criteria, and then against the published NOAA criteria. The sites (proposed projects) that exhibit the greatest number of attributes and the greatest possibility of being completed within the CELCP grant year will be selected as CELCP project sites and applications will be submitted to NOAA for proposed funding.

IV. Coordination and Public Involvement

a. Public Involvement

The CMO has convened a number of focus group meetings as early as 2002 to help in the development of an inclusive (representative of New Jersey's entire coastal area) process to identify critical coastal and estuarine land parcels for acquisition. A 'work group' consisting of representatives from federally funded programs (National Estuary Programs), state agencies, county and municipal government, non-governmental organizations representing environmental advocacy groups, land trusts and academia (New Jersey Marine Sciences Consortium, Monmouth University Urban Coast Institute), foundations, state legislative offices and the Pinelands Commission, NJ Meadowlands Conservancy, and Jacques Cousteau National Estuarine Research Reserve has maintained contact through meetings, conference calls, and e-mail correspondence. Notices of funding availability (CELCP, US Fish and Wildlife Service, Environmental Protection Agency Wetlands Conservation Program, and various foundations) for land acquisition are shared through this 'work group' via e-mail correspondence. Notices of project solicitation for CELCP funds are also broadcast to this group through e-mail correspondence.

It is not necessary to have an active NOAA funding solicitation to submit a project for consideration under CELCP. It is strongly suggested that any acquisition project in the coast be submitted to the Green Acres Program for consideration under its Green Acres State or Local Assistance acquisition programs. The Local Assistance Program provides low cost loans to county, municipal and not-for profit organizations to acquire or develop lands. The submittal of a project to Green Acres allows the project to be administratively developed and maximizes the opportunity for funding in the event federal funds become available. Should the project not be ranked for submission under CELCP it might still be funded through the state program. The 'open acceptance of projects' and their referral to the Green Acres Program is a collaborative method of maintaining public involvement with the New Jersey CELCP.

The draft CELC Plan was posted to the Coastal Management Program's website for a 30-day public review and comment period. A notice of its availability for review was distributed electronically to existing agency lists, as well as the partner list shown in [Appendix D](#). The public comments received will be provided to NOAA and where appropriate incorporated into the draft guidance.

The CMO has worked with the Green Acres Program to develop a map and inventory of the sites acquired with federal CELCP funds to date. The CMO is continuing to populate this data set with the information on sites acquired with CELCP funds directly by municipalities and counties. Upon approval of New Jersey's CELC Plan, the plan, guidance and project proposal forms will be placed on the Coastal Management Program website (www.nj.gov/dep/cmp) along with the map and inventory of previously acquired CELCP sites.

V. Certification and Approval

a. Approval of Plans

The Assistant Administrator for Ocean Services and Coastal Zone Management or his/her designees, shall be the approving official for plans submitted to NOAA under this program. Upon approval of its plan, a state will be eligible to receive competitive funding under the CELCP.

b. Plan Review and Update

NOAA guidance stipulates that states must update their CELC plans at least once every five years to reflect changes that have taken place within the state or region and submit the updated plan to the Office of Ocean and Coastal Resource Management.

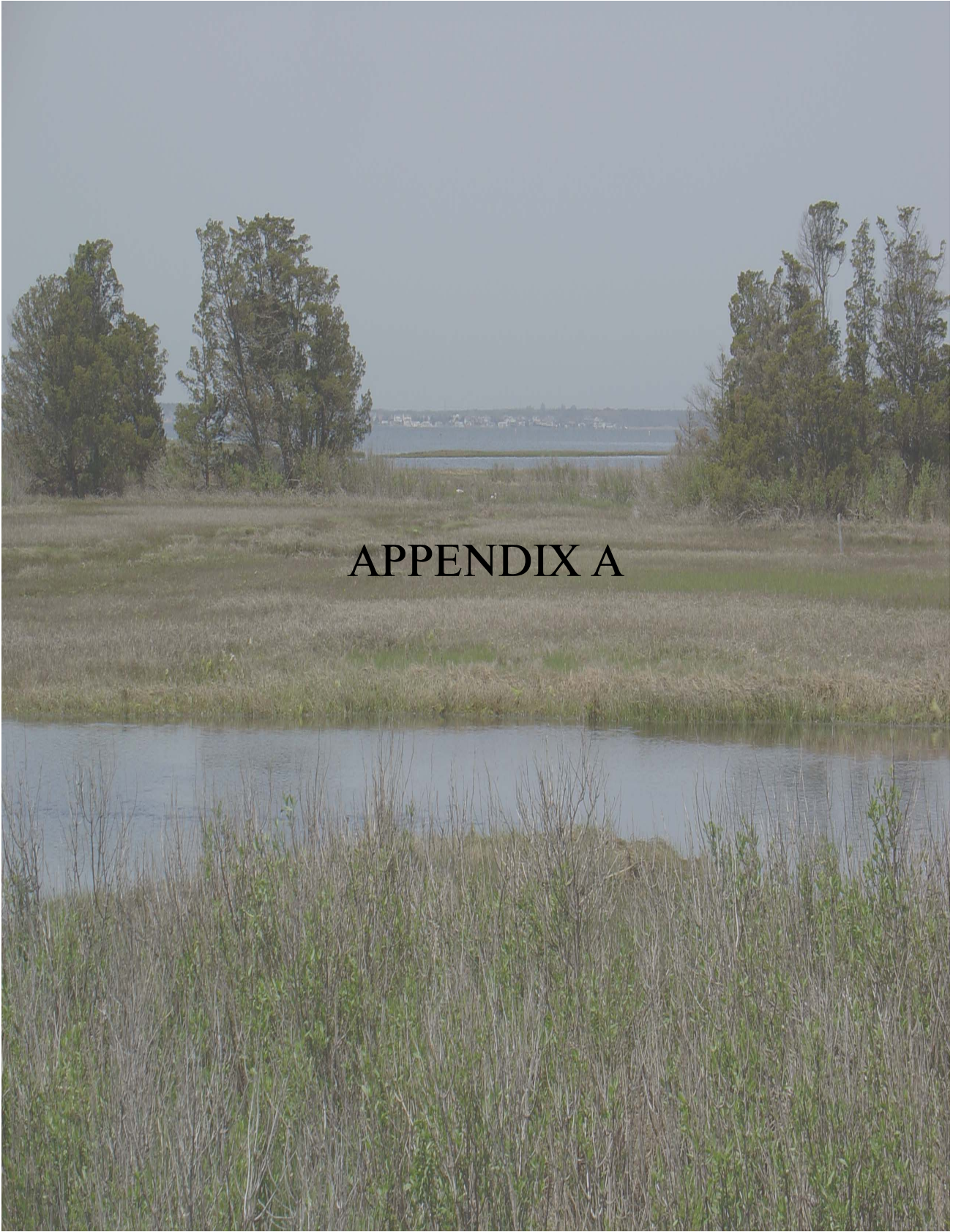
The New Jersey Coastal Management Office is currently working to compile a web-based data set including all lands acquired through the CELCP. This data set as well as continued partnerships with those municipal, county, state, federal and non-governmental organizations maintaining regional or area-specific conservation plans will ensure that the New Jersey CELCP stays attuned to the conservation efforts and priorities in the coast.

The CMO proposes to review and update the New Jersey CELC Plan on the schedule required by NOAA. The review and update of the New Jersey CELC Plan will include:

- An evaluation of coastal conservation efforts including reference to the status of the individual Conservation Plans identified in this document;
- The addition of new resource inventories, evaluations, and prioritization of coastal and marine resources;
- A review of CELCP accomplishments and changes in conservation needs and priorities within the state's coastal areas.

APPENDICES

- A. Maps of New Jersey CELCP and corresponding coastal areas
 - New Jersey's Coastal Zone Boundary
 - 1. Hudson River and Raritan Bay
 - 2. Northern Atlantic Coast
 - 3. Southern Atlantic Coast
 - 4. Delaware Bay
 - 5. Delaware River
- B. Map of municipalities in New Jersey's coastal area with tidal waters
- C. List of coastal municipalities by county
- D. List of CELCP Partners in New Jersey
- E. Project Solicitation Checklist



APPENDIX A

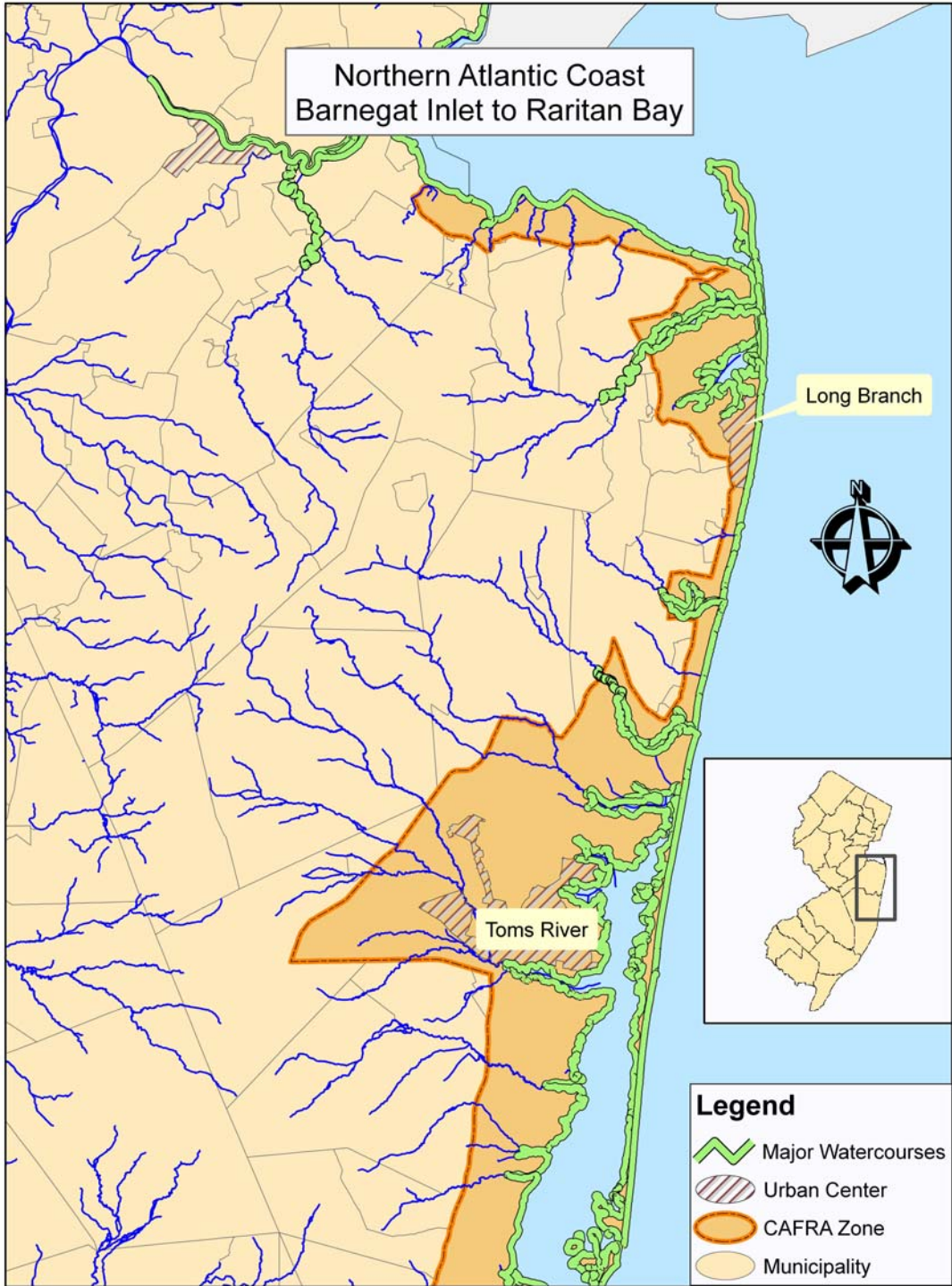
NEW JERSEY COASTAL ZONE BOUNDARY





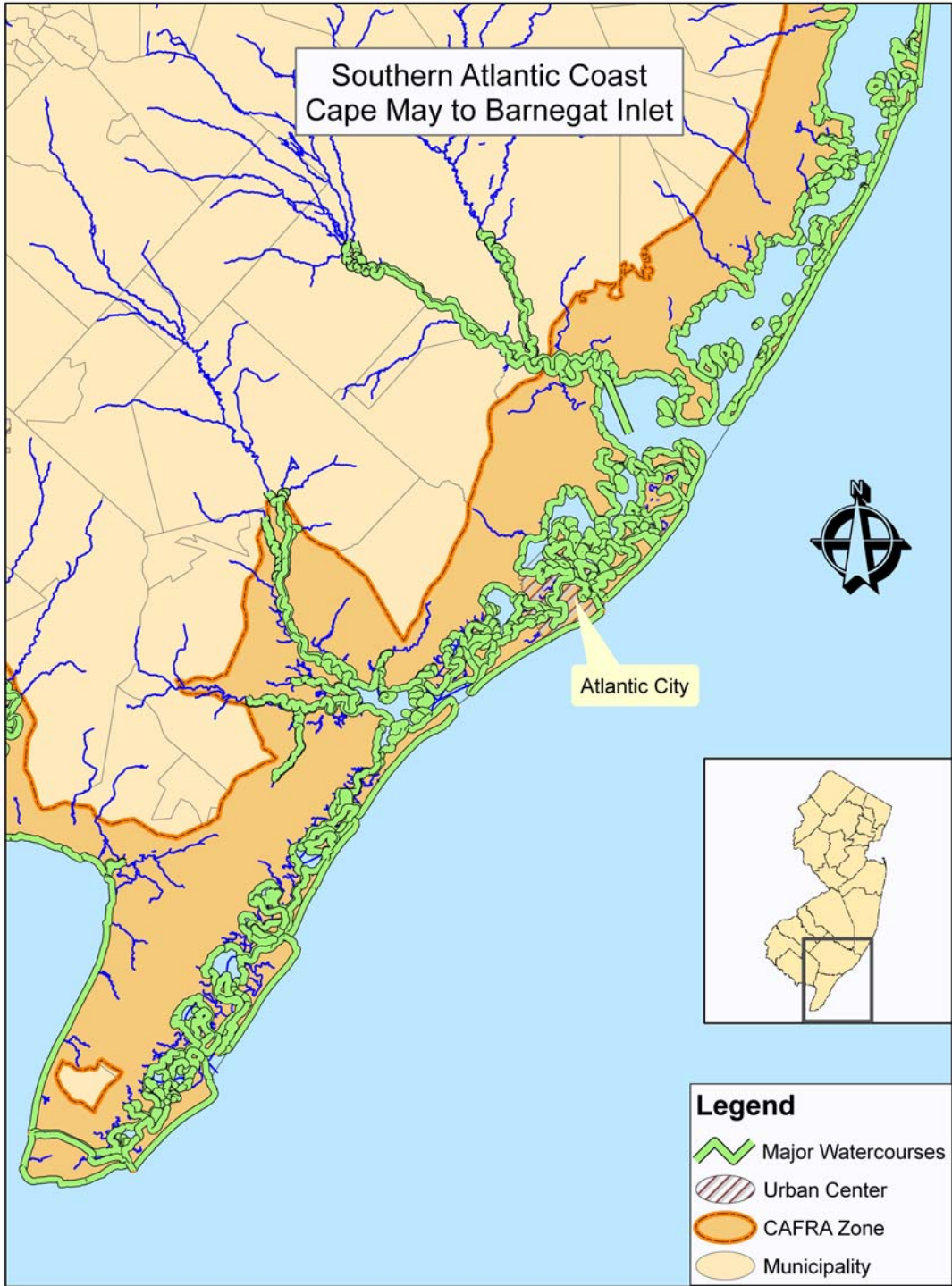
Coastal and Estuarine Land Conservation Program - Area Map 1 of 5

Highlighted watercourses presented to extent of head of tide



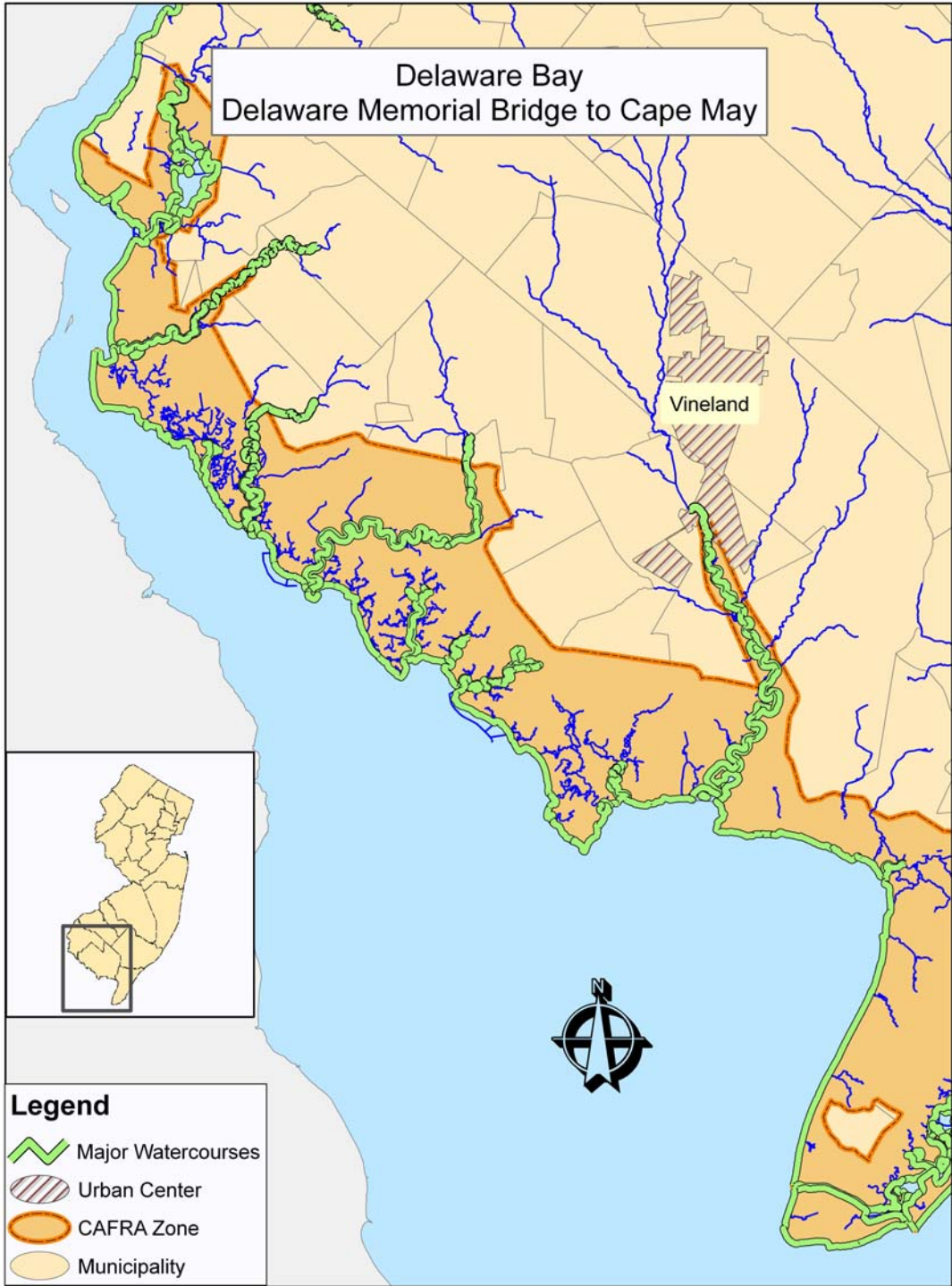
Coastal and Estuarine Land Conservation Program - Area Map 2 of 5

Highlighted watercourses presented to extent of head of tide



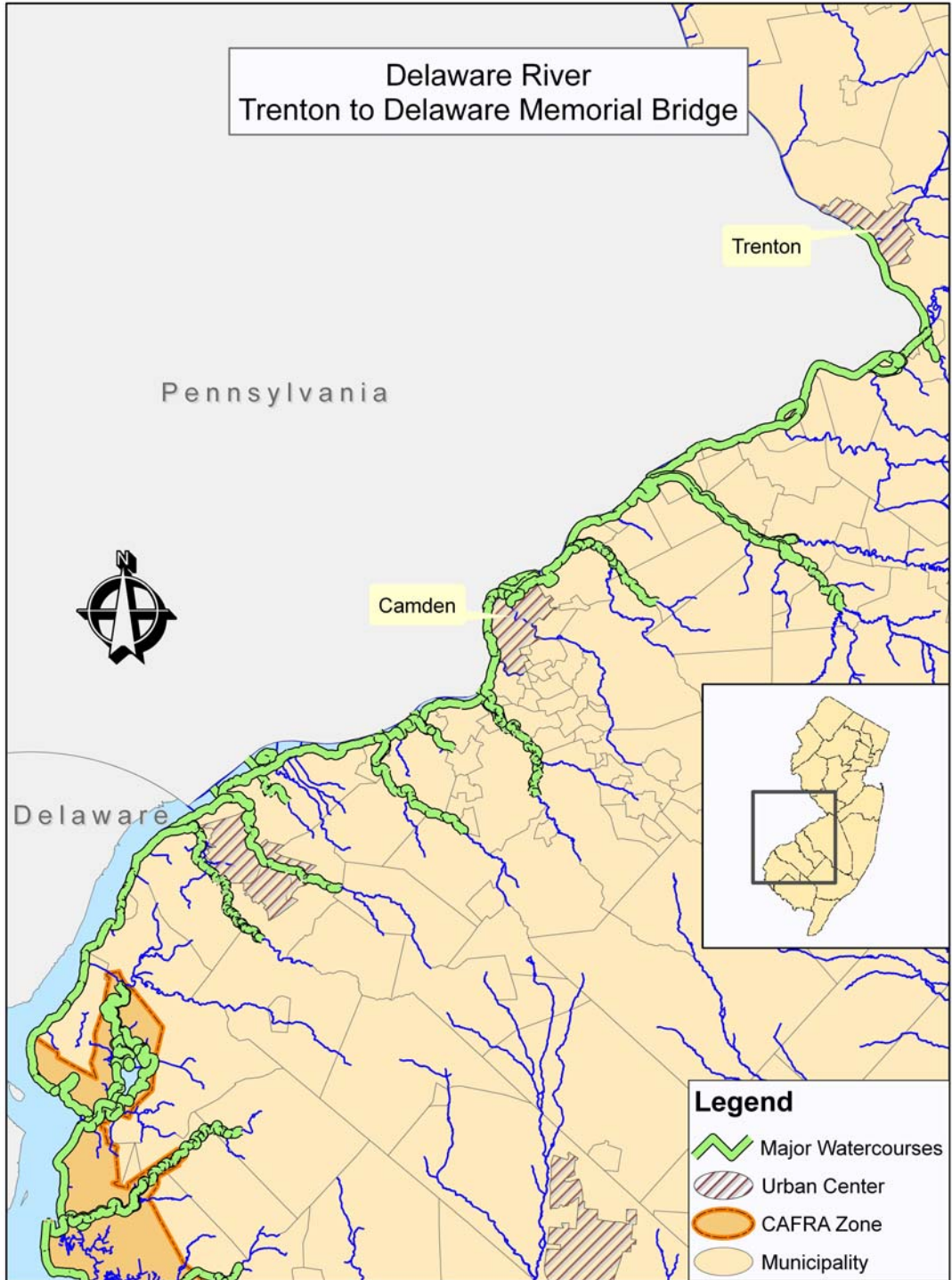
Coastal and Estuarine Land Conservation Program - Area Map 3 of 5

Highlighted watercourses presented to extent of head of tide



Coastal and Estuarine Land Conservation Program - Area Map 4 of 5

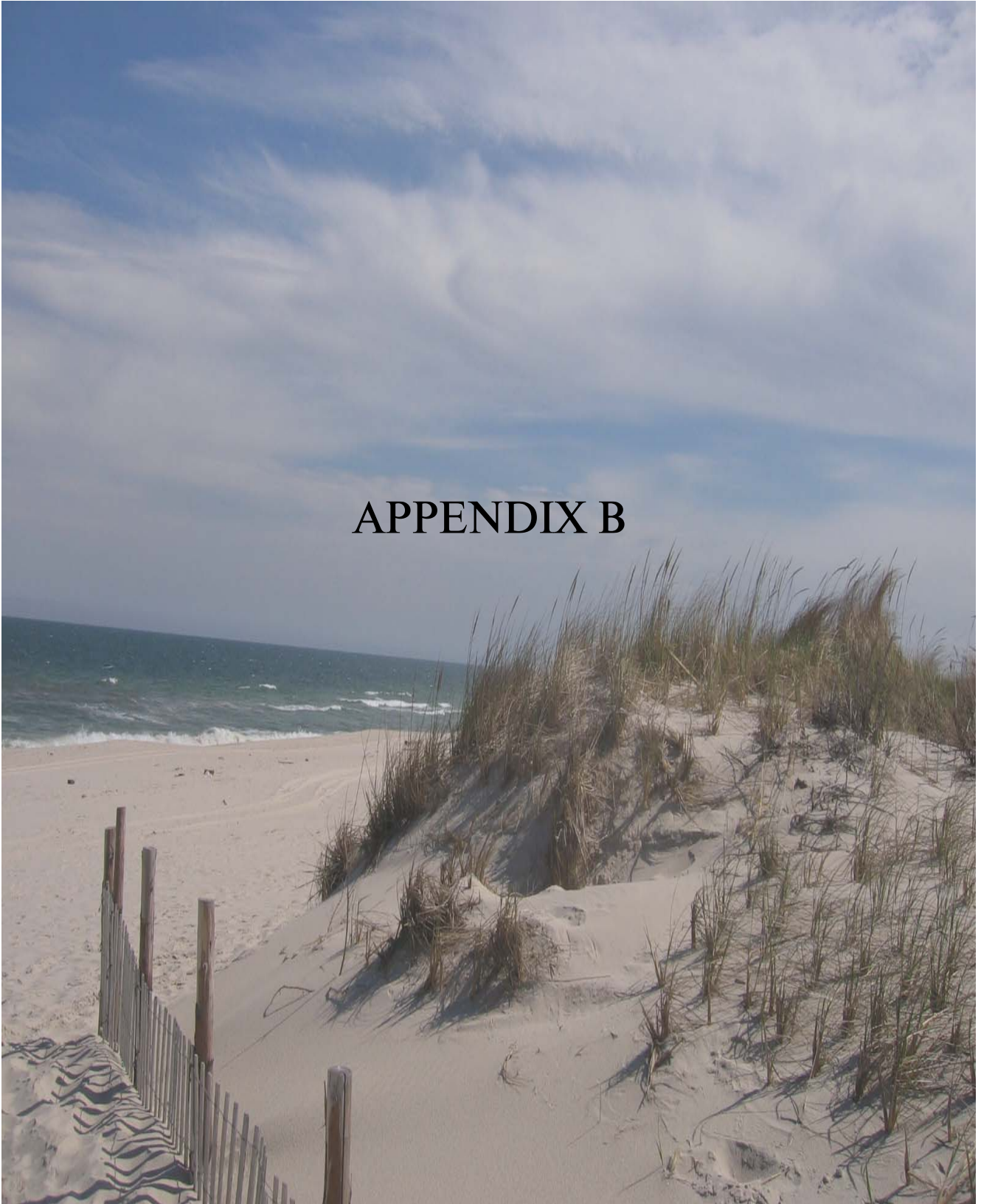
Highlighted watercourses presented to extent of head of tide



Coastal and Estuarine Land Conservation Program - Area Map 5 of 5

Highlighted watercourses presented to extent of head of tide

APPENDIX B



Municipalities With Tidal Waters

ATLANTIC
 Absecon City
 Atlantic City
 Brigantine City
 Corbin City
 Egg Harbor City
 Egg Harbor Township
 Estell Manor City
 Galloway Township
 Hamilton Township
 Linwood City
 Longport Borough
 Margate City
 Mullica Township
 Northfield City
 Pleasantville City
 Port Republic City
 Somers Point City
 Ventnor City
 Weymouth Township

BERGEN
 Alpine Borough
 Bogota Borough
 Carlstadt Borough
 East Rutherford Borough
 Edgewater Borough
 Englewood City
 Englewood Cliffs Borough
 Fairview Borough
 Fort Lee Borough
 Garfield City
 Hackensack City
 Leonia Borough
 Little Ferry Borough
 Lyndhurst Township
 Moonachie Borough
 New Milford Borough
 North Arlington Borough
 Oradell Borough
 Palisades Park Borough
 Ridgefield Borough
 Ridgefield Park Village
 River Edge Borough
 Rutherford Borough
 South Hackensack Township
 Teaneck Township
 Tenafly Borough
 Wallington Borough
 Wood-Ridge Borough

BURLINGTON
 Bass River Township
 Beverly City
 Bordentown City
 Bordentown Township
 Burlington City
 Burlington Township
 Chesterfield Township
 Cinnaminson Township
 Delanco Township
 Delran Township
 Edgewater Park Township
 Fieldsboro Borough
 Florence Township
 Hainesport Township
 Lumberton Township
 Mansfield Township
 Maple Shade Township
 Moorestown Township
 Mount Holly Township
 Mount Laurel Township
 Palmyra Borough
 Riverside Township
 Riverton Borough
 Springfield Township
 Washington Township
 Westampton Township
 Willingboro Township

CAMDEN
 Audubon Borough**
 Belmawr Borough
 Brooklawn Borough
 Camden City
 Cherry Hill Township
 Collingswood Borough
 Gloucester City
 Gloucester Township
 Haddon Township (East)**
 Haddon Township (South)
 Haddonfield Borough**
 Mount Ephraim Borough
 Oaklyn Borough**
 Pennsauken Township
 Runnemede Borough
 Woodlynne Borough

CAPE MAY
 Avalon Borough
 Cape May City
 Cape May Point Borough
 Dennis Township
 Lower Township
 Middle Township
 North Wildwood City
 Ocean City
 Sea Isle City
 Stone Harbor Borough
 Upper Township
 West Cape May Borough
 West Wildwood Borough
 Wildwood City
 Wildwood Crest Borough

CUMBERLAND
 Bridgeton City
 Commercial Township
 Downe Township
 Fairfield Township
 Greenwich Township
 Hopewell Township
 Lawrence Township
 Maurice River Township
 Millville City
 Stow Creek Township
 Upper Deerfield Township

ESSEX
 Belleville Township
 Newark City
 Nutley Township

GLOUCESTER
 Deptford Township
 East Greenwich Township
 Greenwich Township
 Logan Township
 Mantua Township
 National Park Borough
 Paulsboro Borough
 Swedesboro Borough
 Wernonah Borough
 West Deptford Township
 Westville Borough
 Woodbury City
 Woodbury Heights Borough**
 Woolwich Township

HUDSON
 Bayonne City
 East Newark Borough
 Guttenberg Town
 Harrison Town
 Hoboken City
 Jersey City
 Kearny Town
 North Bergen Township
 Secaucus Town
 Weehawken Township
 West New York Town

MERCER
 Hamilton Township
 Trenton City

MIDDLESEX
 Carteret Borough
 East Brunswick Township
 Edison Township
 Highland Park Borough
 Old Bridge Township
 New Brunswick City
 Perth Amboy City
 Piscataway Township
 Sayreville Borough
 South Amboy City
 South River Borough
 Spotswood Borough
 Woodbridge Township

MONMOUTH
 Aberdeen Township
 Allenhurst Borough
 Asbury Park City
 Atlantic Highlands Borough
 Avon-by-the-Sea Borough
 Belmar Borough
 Bradley Beach Borough
 Brielle Borough
 Coits Neck Township
 Deal Borough
 Eatontown Borough
 Fair Haven Borough
 Hazlet Township
 Highlands Borough
 Holmdel Township
 Interlaken Borough
 Keansburg Borough
 Keyport Borough
 Little Silver Borough
 Loch Arbour Village
 Long Branch City
 Manasquan Borough
 Matawan Borough
 Middletown Township
 Monmouth Beach Borough
 Neptune Township
 Neptune City Borough
 Ocean Township
 Oceanport Borough
 Red Bank Borough
 Rumson Borough
 Sea Bright Borough
 Sea Girt Borough
 Shrewsbury Borough
 Spring Lake Borough
 Spring Lake Heights Borough
 Tinton Falls Borough
 Union Beach Borough
 Wall Township
 West Long Branch Borough

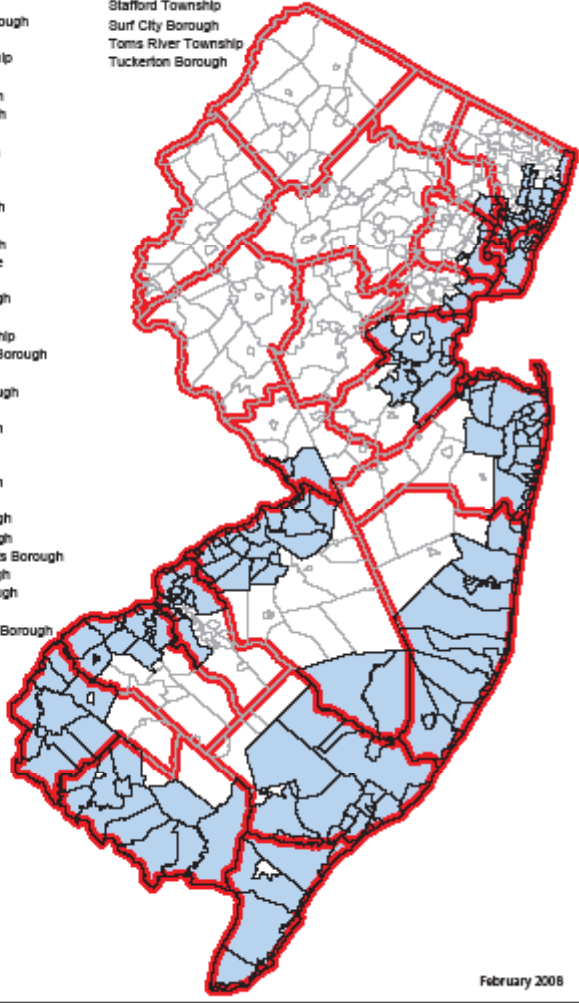
OCEAN
 Barnegat Township
 Barnegat Light Borough
 Bay Head Borough
 Beach Haven Borough
 Beachwood Borough
 Berkeley Township
 Brick Township
 Eagleswood Township
 Harvey Cedars Borough
 Island Heights Borough
 Lacey Township
 Lavelle Borough
 Little Egg Harbor Township
 Long Beach Township
 Mantoloking Borough
 Ocean Township
 Ocean Gate Borough
 Pine Beach Borough
 Point Pleasant Borough
 Point Pleasant Beach Borough
 Seaside Heights Borough
 Seaside Park Borough
 Ship Bottom Borough
 South Toms River Borough
 Stafford Township
 Surf City Borough
 Toms River Township
 Tuckerton Borough

PASSAIC
 Clifton City
 Passaic City

SALEM
 Alloway Township
 Elinboro Township
 Lower Alloways Creek Township
 Mannington Township
 Oldmans Township
 Penns Grove Borough
 Pennsville Township
 Pilesgrove Township
 Quinton Township
 Salem City
 Carneys Point Township

UNION
 Elizabeth City
 Linden City
 Rahway City

**Time Barred



February 2008



APPENDIX C

Municipalities Within the New Jersey Coastal Zone

The coastal zone includes at least a small part of a total of 245 municipalities in seventeen of New Jersey's twenty-one counties. Only Hunterdon, Morris, Sussex, and Warren counties have no coastal waters and are entirely excluded from the coastal zone. This relatively large zone, united by the presence of coastal waters, is quite diverse, stretching from the port of Camden to the vast wetlands along Delaware Bay, to the beaches of the barrier islands along the ocean, to the industrialized waterfront of northern New Jersey. The municipalities are listed below by county.

Atlantic County

Absecon City	Estell Manor Township	Mullica Township
Atlantic City	Galloway Township	Northfield City
Brigantine City	Hamilton Township	Pleasantville City
Corbin City	Linwood City	Port Republic City
Egg Harbor City	Longport Borough	Somers Point City
Egg Harbor Township	Margate City	Ventnor City
		Weymouth Township

Bergen County

Alpine Borough	Garfield City	Ridgefield Borough
Bogota Borough	Hackensack City	Ridgefield Park Village
Carlstadt Borough	Little Ferry Borough	River Edge Borough
East Rutherford Borough	Lodi Borough	Rutherford Borough
Edgewater Borough	Lyndhurst Township	South Hackensack Township
Englewood Cliffs Borough	Moonachie Borough	Teaneck Township
Fairview Borough	New Milford Borough	Teterboro Borough
Fort Lee Borough	North Arlington Borough	Wallington Borough
	Oradell Borough	

Burlington County

Bass River Township	Edgewater Park Township	Mount Holly Township
Beverly City	Fieldsboro Borough	Mount Laurel Township
Bordentown City	Florence Township	Palmyra Borough
Bordentown Township	Hainesport Township	Riverside Township
Burlington City	Lumberton Township	Riverton Borough
Burlington Township	Mansfield Township	Southampton Township
Chesterfield Township	Maple Shade Township	Washington Township
Cinnaminson Township		

Delanco Township
Delran Township

Medford Township
Moorestown Township

Westhampton Township
Willingboro Township

Delran

Camden County

Audubon Borough
Barrington Borough
Bellmawr Borough
Brooklawn Borough
Camden City
Cherry Hill Township

Gloucester City
Gloucester Township
Haddon Township
Hi-Nella Borough
Laurel Springs Borough
Lindenwold Borough

Magnolia Borough
Mount Ephraim Borough
Pennsauken Township
Runnemede Borough
Somerdale Borough
Stratford Borough

Cape May County

Avalon Borough
Cape May City
Point Borough
Dennis Township
Lower Township

Middle Township
North Wildwood City
Ocean City
Sea Isle City
Stone Harbor Borough

West Cape May Borough
West Wildwood Borough
Wildwood City
West Wildwood Crest Borough
Woodbine Borough
Upper Township

Cumberland County

Bridgeton City
Commercial Township
Downe Township

Fairfield Township
Greenwich Township
Hopewell Township

Lawrence Township
Maurice River Township
Millville City
Stow Creek Township

Essex County

Belleville Town

Newark City

Nutley Town

Gloucester County

Deptford Township
East Greenwich Township
Greenwich Township
Logan Township
Mantua Township

National Park Borough
Paulsboro Borough
Swedesboro Borough
Wenonah Borough
West Deptford Township

Westville Borough
Woodbury City
Woolwich Township

Hudson County

Bayonne City
East Newark Borough

Harrison Town
Hoboken City North

Kearny town
Bergen Township

Guttenberg Town

Jersey City

Secaucus Town
West New York Town

Mercer County

Hamilton Township
Trenton City

Middlesex County

Carteret Borough
East Brunswick Township
Edison Township
Highland Park Borough

New Brunswick City
Old Bridge Township
Perth Amboy City
Piscataway Township

Sayreville Borough
South Amboy City
South River Borough
Woodbridge Township

Monmouth County

Aberdeen Township (Matawan)
Allenhurst Borough
Asbury Park City
Atlantic Highlands Borough
Avon-by-the-Sea Borough
Belmar Borough
Bradley Beach Borough
Brielle Borough
Deal Borough
Eatontown Borough
Fair Haven Borough
Hazlet Township
Highlands Borough

Holmdel Township
Interlaken Borough
Keansburg Borough
Keyport Borough
Little Silver Borough
Loch Arbour Village
Long Branch City
Manasquan Borough
Matawan Borough
Middletown Township
Monmouth Beach Borough
Neptune City
Neptune Township West

Ocean Township
Oceanport Borough
Red Bank Borough
Rumson Borough
Sea Bright Borough
Sea Girt Borough
Shrewsbury Borough
South Belmar Borough
Spring Lake Borough
Spring Lake Heights Borough
Union Beach Borough
Wall Township
Long Branch Borough

Ocean County

Barnegat Light Borough
Barnegat Township (Union)
Borough Bay Head Borough
Beach Haven Borough
Beachwood Borough
Berkley Township
Brick Township
Dover Township
Eagleswood Township
Harvey Cedars Borough

Jackson Township
Lacey Township
Lakehurst Borough
Lakewood Township
Lavallette Township
Little Egg Harbor Township
Long Beach Township
Manchester Township
Mantoloking Borough
Ocean Gate Township

Pine Beach Borough
Point Pleasant Beach
Point Pleasant Borough
Seaside Heights Borough
Seaside Park Borough
Ship Bottom Borough
South Toms River Borough
Stafford Township
Surf City Borough
Tuckerton Borough

Island Heights Borough

Ocean Township

Passaic County

Clifton City
Passaic City

Salem County

Alloway Township
Carneys Point Township
Elsinboro Township
Lower Alloways Creek Township

Mannington Township
Oldmans Township
Pennsgrove Township
Pennsville Township

Pilesgrove Township
Quinton Township
Salem City

Somerset County

Franklin Township

Union County

Elizabeth City

Linden City

Rahway City

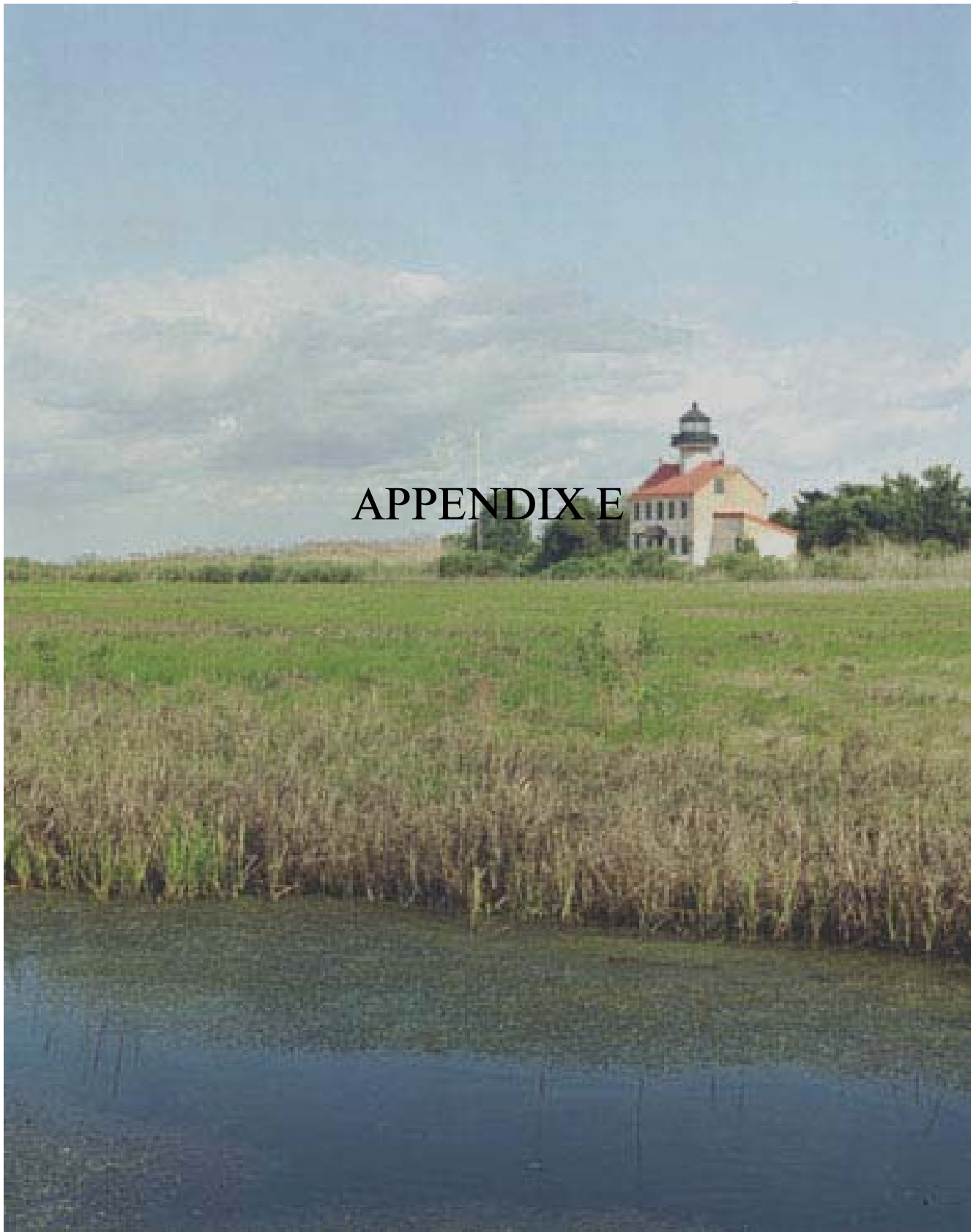


APPENDIX D

List of CELCP Partners in New Jersey

American Littoral Society
ANJEC Association of New Jersey Environmental Commissions
Barnegat Bay National Estuary Program
Bayshore Discovery Project
Bergen County Open Space, Recreation, and Farmland & Historic Preservation Trust Fund
Boater Voter Coalition, Inc.
Burlington County Department of Resource Conservation
Burlington Island Board of Managers
County Planning Departments
C.R.A.B. Citizens Right to Access Beaches
Delaware and Raritan Greenway Land Trust
Delaware River Greenway Partnership, Inc.
Delaware River Keeper Organization
Friends of the Passaic River, Inc.
Hackensack River Keeper Organization
Jacques Cousteau National Estuarine Research Reserve
Meadowlands Conservation Trust
Monmouth Conservation Foundation
Monmouth University, Urban Coast Institute
National Fish & Wildlife Foundation
National Wild & Scenic Rivers Program - in NJ: Maurice River, Delaware River, Great Egg Harbor
New Jersey American Indian Alliance
New Jersey Conservation Foundation
New Jersey Department of Environmental Protection Division of Fish & Wildlife
New Jersey Department of Environmental Protection Division of Parks & Forestry
New Jersey Department of Environmental Protection Green Acres Program
New Jersey Department of Environmental Protection - Natural Lands Trust
New Jersey Department of Transportation, Office of Maritime Resources
New Jersey Marine Sciences Consortium
New Jersey Meadowlands Commission
New York/New Jersey BAYKEEPER Organization
Partnership for the Delaware Estuary, Inc.
Pinelands Commission
Sierra Club / New Jersey
South Jersey Coalition
Tidewaters Organization

The Nature Conservancy
Trust for Public Land
Wildlife Trust Organization



New Jersey CELCP Project Solicitation Checklist

The project applicant must complete (to the best of their ability) this Project Checklist and submit it to the Coastal Management Office, New Jersey Department of Environmental Protection for the project to be considered as a candidate for the CELCP competitive award process. Completion and submittal of this information does not confirm that the project will be selected as a CELCP candidate site for New Jersey.

Applicant and Project Information

CELCP Funding Year: _____

1. **Project Sponsor Organization (Must be a public entity at the state or local level responsible for executing the project)** _____

- a. **Contact Name:** _____
- b. **Address:** _____
- c. **Phone:** _____
- d. **E-mail:** _____

2. **Project Title:** _____

3. **Property Owner Name:** _____

4. **Project Location (Approximate):** (Municipality, County, Major Intersections)

- a. **Municipality:** _____
- b. **County:** _____
- c. **Lot and Block:** _____
- d. **Name of Tidal Watercourse:** _____
- e. **Number of Acres:** _____
- f. **Congressional District :** _____

5. **What are the legal rights that will be acquired?** Fee Simple Easement Other
(Explain)

- a. If an easement, what is the life of the document (*please specify, e.g., in years*)?
_____ In perpetuity _____ Duration
- b. What public agency will hold title to the land?
- c. Is a long-term stewardship or management strategy proposed for ensuring long-term operations, maintenance, and safety needs related to the property (Attach)? Yes No

d. What are the current activities/uses of this property? What activities/uses are envisioned to occur on the property once acquired?

e. Will a private or non-profit organization be contracted to complete all or part of this project? Yes

Name of the organization: _____ No

6. **Project Acquisition Cost:** If project cost is unknown please estimate costs.

Total Project Cost _____

Proposed Match: _____

CELCP Federal share (requested amt): _____

CELCP State/Local Match Contributions: _____

Other Federal: _____

Other Non-Federal _____

7. Is parcel listed on Green Acres Planning Map? Yes / ID # _____ No

8. Is the parcel listed on any local, county, ngo, state or federal Conservation Priority List?

Yes No

Name of Conservation Priority List: _____

9. **Identify Acquisition and Management Partners:**

Municipal: _____

County: _____

State: _____

Federal: _____

NGO: _____

10. **Location and Site Maps** The applicant should attach (1) a map of the state or coastal county showing the general location of the project, and (2) a map of the project site, which shows the location and extent of the proposed acquisition, as well as relationship to significant natural features (slope, wetlands, dunes, floodplains, access, etc.). *Digital copies of these maps and documents will be required to submit to NOAA with a formal application if this project is selected as a CELCP candidate project. (Please provide):*

Surveys Environmental Review Appraisals /Date: _____

Aerial Photo Location Map Tax Parcel Map

11. **Project time line** (Describe current status of negotiations and expected time of closing):

12. Project Eligibility: (CELCP projects should meet all of these criteria).

The proposed project:

- is located in a coastal or estuarine area (that has been designated as part of a state's approved coastal and estuarine land conservation (CELC) plan;
- matches federal funds with non-federal funds at a ratio of at least 1:1;
- will be held in public ownership and provide conservation in perpetuity;
- will provide for access to the general public, or other public benefit, as appropriate and consistent with resource protection.
- protects important coastal and estuarine areas that have significant conservation, ecological, historical, aesthetic, or recreation values, or that are threatened by conversion from their natural or recreational state to other uses;
- can be effectively managed and protected;
- directly advances the goals, objectives or implementation of New Jersey's coastal management plan or program or the Jacques Cousteau NERR management plan approved under the Coastal Zone Management Act (CZMA), national objectives of the CZMA, or a local, regional or state watershed protection plan involving coastal states with approved coastal management programs
- is consistent with New Jersey's approved coastal management program.

13. Title Opinion and Appraisal: *(Digital copies of these documents will be required to submit with a formal application to NOAA if this project is selected as a CELCP candidate project).*

- a. Documentation of the current owner's intent or willingness to sell at a mutually agreeable price is attached. *(This documentation may be in the form of a letter of intent, option letter, contract, or similar form.)* Yes No
- b. The applicant has obtained and attached an independent appraisal performed by a state certified appraiser. Yes No *If No, please identify status of appraisal process.*
- c. A title opinion or title insurance report is attached. Yes No *If No, please identify the status of the insurance report.*

14. Description of Property: (Address each category if applicable and provide documentation to support the description. Add separate sheets if necessary). Please identify the primary category for which this parcel is being submitted for consideration. All categories should be addressed to achieve the highest score.

Ecological - what type of habitats, species, or other features of significant ecological value are contained on the property? (Include acreage where appropriate)

Historical - what historical features of significant value are contained on the property?

Aesthetic - what is the aesthetic value of the property? What significant contribution does this property make to the aesthetic character of the surrounding area?

Recreational - what is the property's significance with regard to coast-dependent or nature-based recreation?

Conservation - what values does this land provide in terms of establishing linkages or corridors among existing conservation lands, filling conservation gaps in the geographic area, or protecting land from converting to other uses?

15. Public Benefit:

a. Will the acquisition be publicly held or under publicly-controlled easement for public benefit? The project will not improve private property for private or commercial gain.

Yes No

b. Will the property be accessible to the general public? Yes No

c. If the answer to the question above (15.b) is No, check any of the following reasons that apply and explain why access to the property will be limited.

Public Safety Resource Protection Geographically Isolated/Inaccessible

School Outings Only Scientific Research

Other (please explain): _____

d. Will the property be leased or rented? Yes No If yes, please explain.

e. Will the public be charged a user fee for access to or activities on the proposed property?

Yes No *If Yes, provide a description of the user fee which includes: how much; differential fees (if any); the need for the fees; and, proposed use of the revenue.*

Compliance with Other Federal Authorities

16. State Historic Preservation Officer's (SHPO's) Clearance and National Historic Preservation Act:

a. The project will affect properties listed on the National Register of Historic Places (www.cr.nps.gov/nr/), eligible to be listed, or otherwise protected by section 106 of the National Historic Preservation Act (www2.cr.nps.gov/laws/NHPA1966.htm) or a similar State Preservation Act. Yes No

b. The Recipient has on-file the SHPO's clearance. _____ Yes _____ No (If No, the Recipient certifies, by signing this checklist, that the SHPO clearance is being sought and that work will not begin and land will not be purchased until SHPO clearance is received by the Recipient.)

DRAFT

17. National Flood Insurance Program:

a. Is the project located in a designated special flood hazard area, floodway or "V" zone on a National Flood Insurance Program Floodway Map (www.fema.gov/maps)? Yes No
(If No, go to 18)

b. Is the community in which the project is located in special flood hazard areas shown on an FIA map is participating in the National Flood Insurance Program (www.fema.gov/nfip). Yes No

18. Coastal Barrier Resources Act of 1982: The project is located on an undeveloped coastal barrier designated by the Coastal Barriers Resources Act (www.fws.gov/habitatconservation/cbra4.html).
 Yes No

If the answer is Yes, provide a brief statement below or attach to this checklist a brief analysis as to how the proposed project is consistent with the three CBRA purposes: to minimize (1) the loss of human life, (2) wasteful federal expenditures, and (3) damage to fish, wildlife and other natural resources.

19. Endangered Species Act: Might the proposed project adversely affect threatened or endangered species or critical habitat under the jurisdiction of the National Marine Fisheries Service (NMFS) or U.S. Fish and Wildlife Service (USFWS) as defined by the Endangered Species Act? (www.fws.gov/endangered) or (www.nmfs.noaa.gov/pr/species).
 Yes No

If the answer is No, provide a brief statement below explaining the basis for the conclusion. If the answer to 19 is Yes, provide a description of the adverse effects (minor and significant effects), the species or habitat affected, and any coordination between the state and the USFWS or NMFS. OCRM will not approve a project that USFWS or NMFS has determined will significantly adversely affect threatened or endangered species or critical habitat.

20. Magnuson-Stevens Fishery Conservation and Management Act.

Does the proposed project include essential fish habitat for federally managed fish?
 Yes No Not yet determined (please explain).

Could the proposed project have significant adverse impacts on essential fish habitat for federally managed fish? Yes No

21. National Environmental Policy Act:

- a. The proposed project may significantly affect the human environment.
 Yes No
- b. The proposed project involves unresolved conflicts concerning alternative uses of available resources.
 Yes No
- c. This action would have significant adverse effects on public health and safety.
 Yes No
- d. This action will have highly controversial environmental effects. Yes No
- e. This action will have highly uncertain environmental effects or involve unique or unknown environmental impacts. Yes No
- f. The project will have significant adverse impacts on other natural resources not covered elsewhere in this checklist, e.g., beaches and dunes, wetlands, estuarine areas, wildlife habitat, wild or scenic rivers, reefs, or other coastal resources. Yes No
- g. The project will have insignificant effects when performed separately, but will have significant cumulative effects. Yes No

If the answer to any one subpart of 21 is Yes, then an Environmental Assessment (EA) or Environmental Impact Statement (EIS) may be required. For items answered Yes, please attach a description of the resource(s) affected and the nature and scope of the effects.

22. Uniform Relocation Assistance and Real Property Acquisitions Policies Act of 1970. If the proposed project involves the acquisition and/or modernization of real property, will the proposed project cause the displacement of:

Persons,	<input type="checkbox"/> Yes	<input type="checkbox"/> No
Businesses, or	<input type="checkbox"/> Yes	<input type="checkbox"/> No
Farm Operations	<input type="checkbox"/> Yes	<input type="checkbox"/> No

If yes to any of the above, please explain: the number of displaced persons, including businesses and farm operations; what fair and reasonable relocation payments and advisory services will be provided to any displaced persons; and what provisions will be made to ensure that safe, decent, and sanitary replacement dwellings will be available to such persons within a reasonable period of time prior to displacement.

23. **Handicapped accessibility:** Will the proposed project be handicapped accessible?

Yes No N/A

If No or N/A, provide a brief explanation below (or attach separately) as to why the project does not or is not required to meet ADA handicapped accessibility requirements.

24. **Environmental Justice.** Will the project have disproportionately high and adverse human health or environmental effects on minority or low-income populations? Yes No

25. **State, Local and Tribal Laws.** The project is consistent with state, local and tribal laws to protect the environment. Yes No

26. **Contamination/Environmental Hazards (CERCLA/RCRA)**

a. Are there any known or suspected contaminants on the project site? Yes No

If yes, please discuss what type of contamination is on the site, or suspected to be on the site, and the status of clean-up activities.

c. Has the site been investigated, identified and/or designated as having hazardous waste contamination issues by a federal, state, or local agency (for example superfund site)?

Yes No

If yes, please explain the basis for the designation, the status of clean-up activities, and whether there are any legal liens or judgments affecting the property.

27. **Public Coordination**

Has the project for which you propose to use CELCP funds been subject to public scrutiny and coordination through a public notice or other public review process? Yes No

If "yes", please describe the results of that process and note when the coordination occurred.

If "no", please explain.

Project Budget Overview Table

Please fill out a Budget Overview Table using the template below. Please identify the costs associated with the full project, including funding from other sources. If costs have not yet been incurred, please estimate and identify the cost(s) as estimated. (Suggested Categories: Land, Appraisals, Title Opinion, Legal Review, etc...)

CATEGORY	AMOUNT (Note if in cash or in-kind value of land services)	FEDERAL SHARE FROM CELCP	STATE/LOCAL CONTRIBUTION	FUNDING SOURCE (Include information from all contributors to the project)	TOTAL	HAVE FUNDS ALREADY BEEN EXPENDED?
TOTAL						

I ATTEST TO THE FOLLOWING: (1) THE STATEMENTS MADE AND OTHER INFORMATION PROVIDED IN THIS CHECKLIST ARE, TO THE BEST OF MY KNOWLEDGE, TRUE AND ACCURATE; (2) THE DOCUMENTS IDENTIFIED IN THIS CHECKLIST ARE ON FILE OR BEING OBTAINED AS NOTED; AND (3) I UNDERSTAND THAT THIS IS A SOLICITATION FOR PROJECT REVIEW AND CONSIDERATION BY THE NEW JERSEY COASTAL MANAGEMENT OFFICE AND IS NOT A FINAL APPLICATION FOR CELCP FUNDING.

Signature of Applicant

Date

Name of Signatory (please print or type): _____

Title: _____

Address: _____

Phone Number: _____

E-mail: _____

Please send completed New Jersey Project Solicitation Checklist and supporting documents to:

Coastal Management Office
Attn: Dorina Frizzera, NJ CELCP Coordinator
New Jersey Department of Environmental Protection
P.O. Box 418
Trenton, New Jersey 08625-0418