

WEST SHORE LAKE PONTCHARTRAIN, LOUISIANA FEASIBILITY STUDY NGO PARTNERSHIP MEETING

Travis Creel

Plan Formulator

New Orleans District

Sept 25, 2014



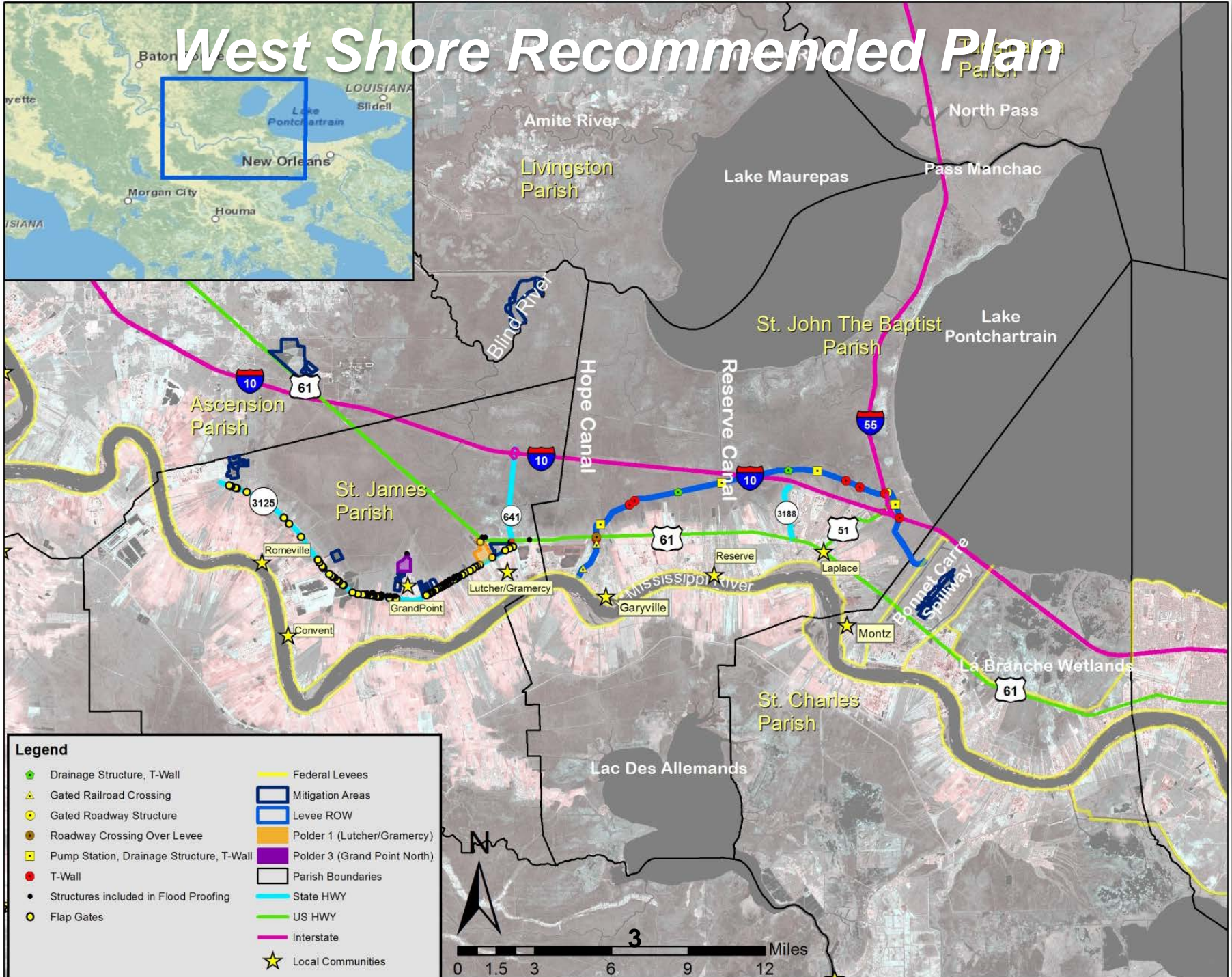
US Army Corps of Engineers
BUILDING STRONG

WSLP Update

- Recommend comprehensive risk reduction system in SE LA:
 - ▶ Levee system in St. Charles and St. John Parishes
 - ▶ Localized risk reduction measures in St. James Parish in SE LA
- Conditional approval on 16 Sep 2014 to move forward to S&A review
- After S&A review, Chief's Report will be signed and sent to Congress



West Shore Recommended Plan

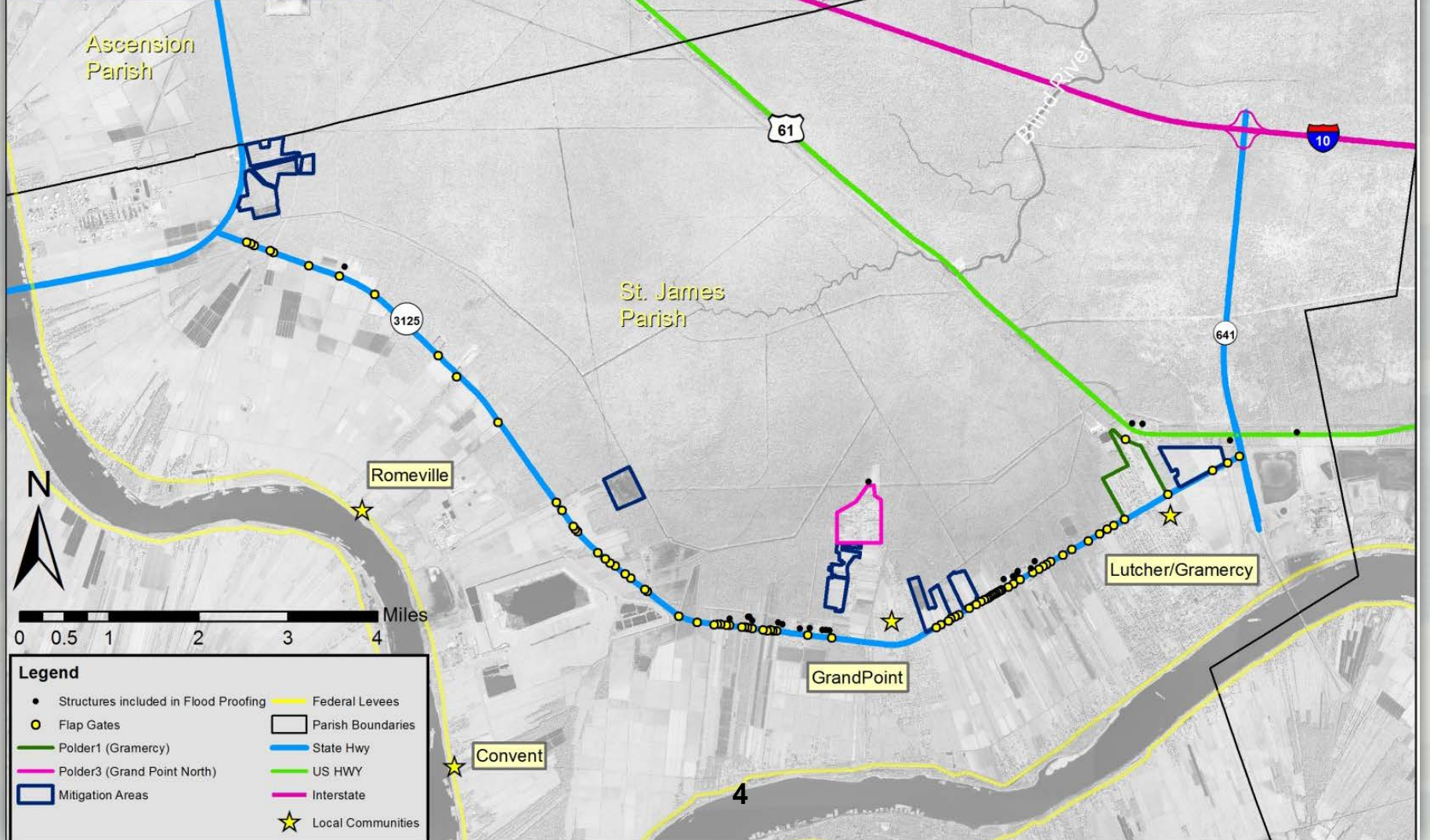


Legend

- ◆ Drainage Structure, T-Wall
- ▲ Gated Railroad Crossing
- Gated Roadway Structure
- Roadway Crossing Over Levee
- Pump Station, Drainage Structure, T-Wall
- T-Wall
- Structures included in Flood Proofing
- Flap Gates
- Federal Levees
- ▭ Mitigation Areas
- ▭ Levee ROW
- ▭ Polder 1 (Lutchter/Gramercy)
- ▭ Polder 3 (Grand Point North)
- ▭ Parish Boundaries
- State HWY
- US HWY
- Interstate
- ★ Local Communities



Features in St. James Parish



Legend

• Structures included in Flood Proofing	Yellow line Federal Levees
○ Flap Gates	Blue outline Parish Boundaries
Green line Polder1 (Gramercy)	Blue line State Hwy
Pink line Polder3 (Grand Point North)	Green line US HWY
Blue outline Mitigation Areas	Pink line Interstate
Yellow star Local Communities	

Schedule

- CWRB 16 Sep 2014 (A)
- Approval for State and Agency 16 Oct 2014*
- Begin State & Agency Review 24 Oct 2014*
- End State & Agency Review 25 Nov 2014*
- Chief's Report December 2014*
- Design Start TBD
- Construction Start TBD



*Dates are subject to change based on the date of the 2nd CWRB meeting



Questions?

