

NGO Partnership Meeting New Orleans District Regulatory Update

***Martin Mayer
November 13, 2013***



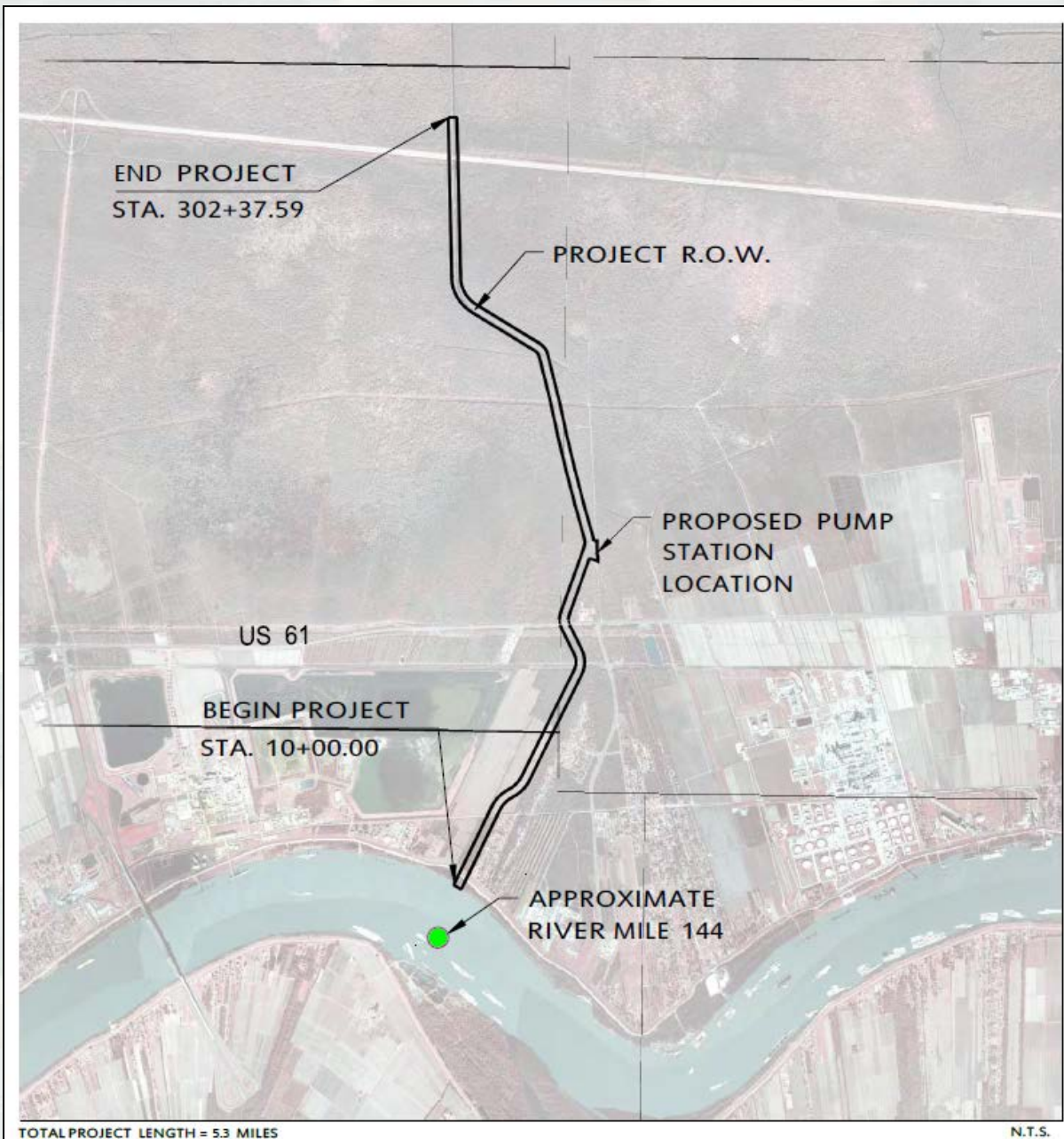
®

**US Army Corps of Engineers
BUILDING STRONG®**



Project Plan View

Mississippi River
Reintroduction into
Maurepas Swamp



Louisiana Coastal Protection Authority (CPRA):

MVN-2013-1561-CQ

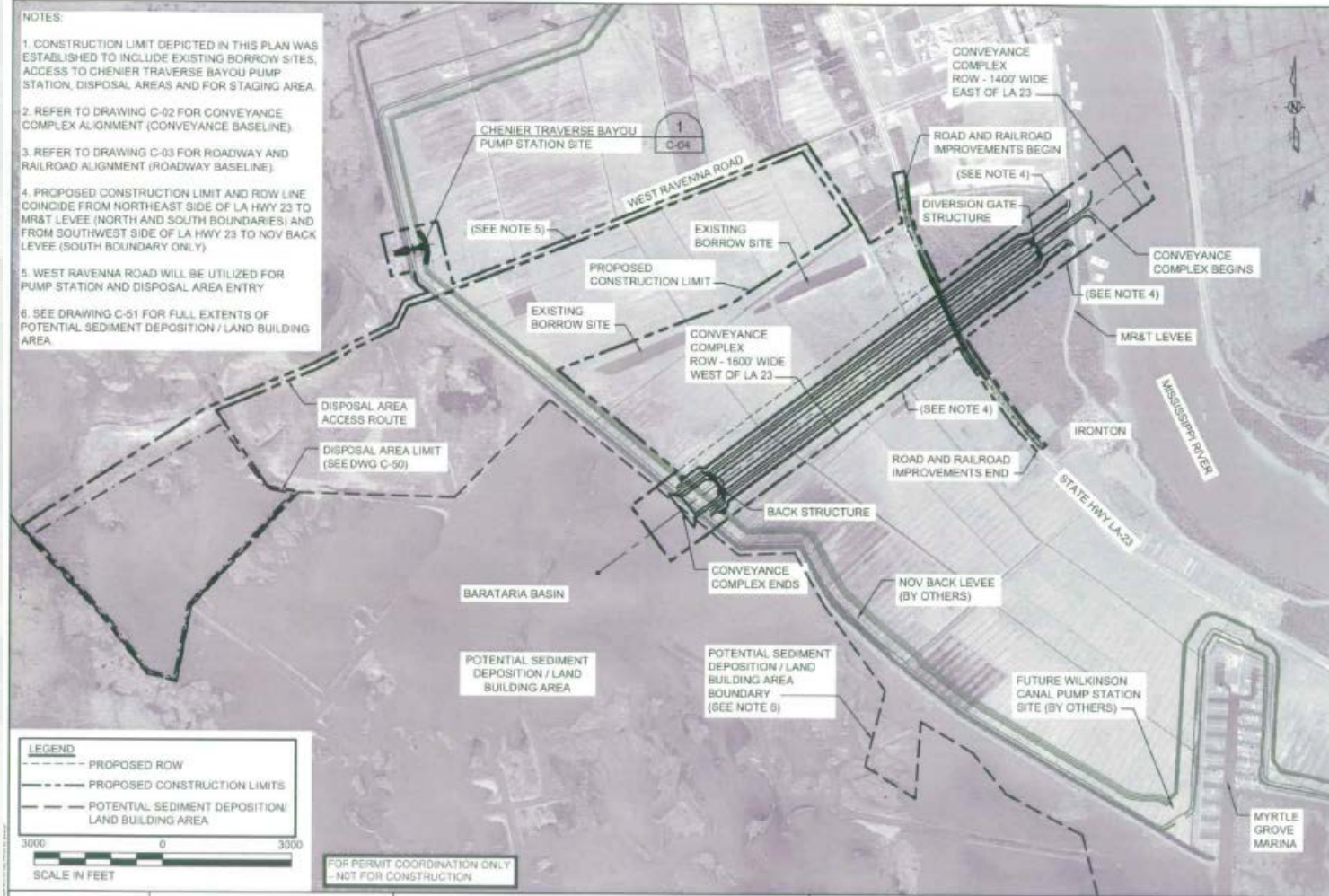
Mississippi River Reintroduction into Maurepas Swamp (PO-29)

- **Scope of Work:** Construct three 10x10 concrete box culverts and a 5.5-mile conveyance channel to divert 5000 cfs freshwater to Maurepas Swamp
- **Application received:** June 26, 2013 - Determined to be incomplete
 - ▶ Additional information letter sent to CPRA: July 11, 2013
 - ▶ Application complete for Public Notice: August 14, 2013
- **Joint Public Notice issued:** August 26, 2013
 - ▶ 30 day comment period ended September 25, 2013
 - ▶ Comments received: USFWS, EPA, LDWF, NMFS, US Coast Guard, Entergy Louisiana, LLC, MNSA, Louisiana Audubon Council, Gulf Restoration Network, and the Mississippi River Delta Restoration Campaign and its many partners.
- **Structures Affected:**
 - ▶ MR&T, railway corridor, highway/interstate infrastructure, drainage, utilities, etc.
- **Status**
 - ▶ Comments forwarded to CPRA by letter: October 29, 2013
 - ▶ Status meeting to between MVN, Office of Coastal Management, and CPRA (mid-November 2013)



Project Plan View

Mid-Barataria Sediment Diversion



			COASTAL PROTECTION & RESTORATION AUTHORITY ENGINEERING DIVISION 450 LAUREL STREET BATON ROUGE, LOUISIANA 70801		MID-BARATARIA SEDIMENT DIVERSION		SITE OVERVIEW	
			DRAWN BY: HDD	DESIGNED BY: PGG	STATE PROJECT NUMBER: BA-153	FEDERAL PROJECT NUMBER: BA-153	DATE: JULY 2013	DRAWING: C-01



Louisiana Office of Coastal Protection and Restoration(OCPR): MVN-2012-02806-ETT Mid-Barataria Sediment Diversion

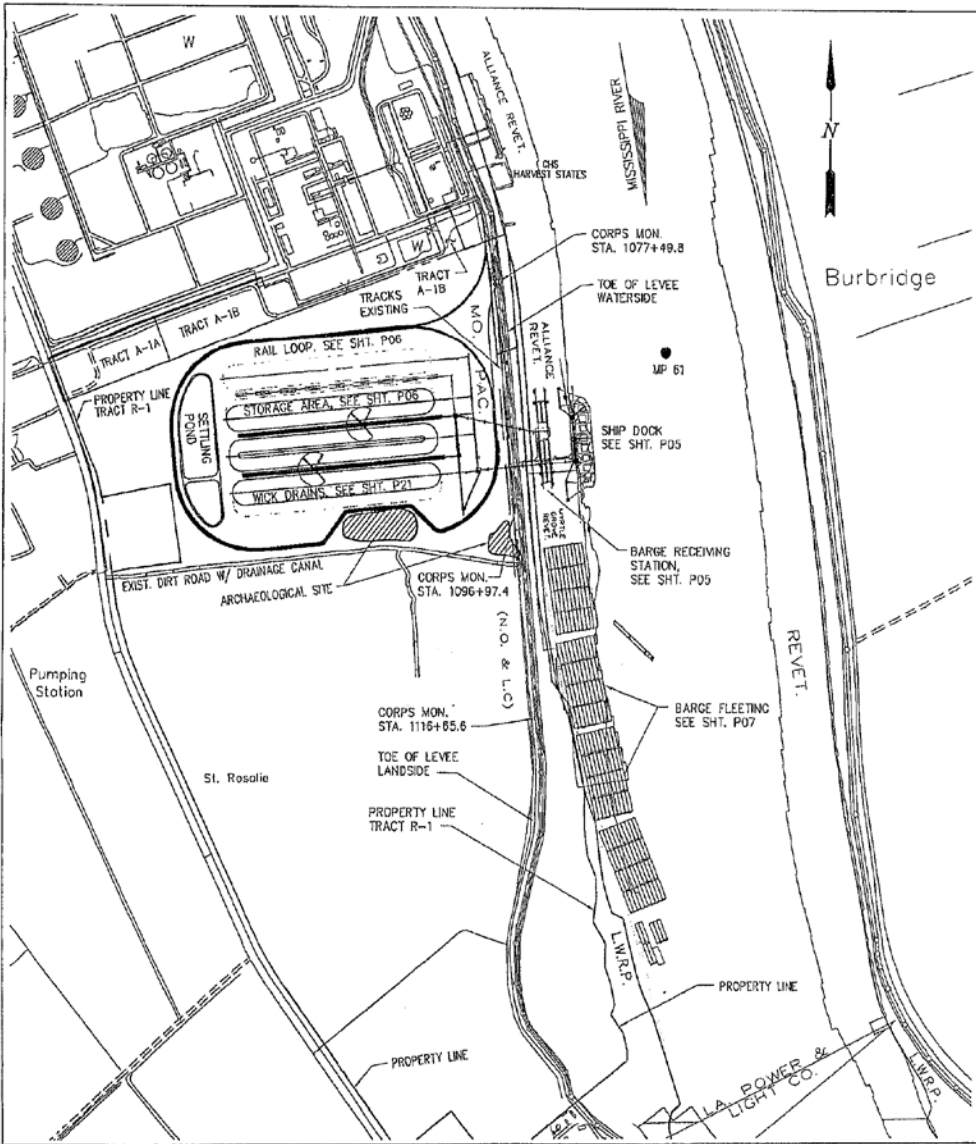
- **Scope of Work:** Construct a conveyance complex w/diversion gate and concrete channel approx. 2 miles long to divert up to 75,000 cfs sediment-laden flow for land building in Barataria Bay

- **Application Received:** July 26, 2013 - Determined to be incomplete
 - ▶ Application complete: August 13, 2013
 - ▶ Significance determination: August 28, 2013

- **Structures Affected:**
 - ▶ MR&T, NOV, railroad corridor, drainage infrastructure, highway, utilities, etc.


- **Status**
 - ▶ October 4, 2013: Notice of Intent to prepare EIS published by Corps of Engineers in Federal Register





Project Plan View

RAM Terminals, LLC
Coal Export Facility

 <p>LANIER & ASSOCIATES CONSULTING ENGINEERS INCORPORATED NEW ORLEANS, LA · BEAUMONT, TX</p>	<p>RAM TERMINALS, LLC MYRTLE GROVE LOUISIANA</p>	<p>DATE: MARCH '12 DESIGN: ARF DRAWN: JLF CHECK: JFJ CONTRACT: 8733 SHEET No.</p>
	<p>COAL EXPORT FACILITY OVERALL SITE PLAN</p>	<p>8733-P04</p> <p>4 of 27</p>



BUILDING STRONG®

RAM Terminals, LLC

MVN-2012-0123-EPP

Coal Export Facility

▪ **Description**

- ▶ Clear, grade, excavate and deposit fill for a coal export facility including: coal storage, terminal and barge fleeting

▪ **Location**

- ▶ Located on right descending bank of MS River approx. 61 miles above Head of Passes, at 16111 Hwy 23, in Myrtle Grove, LA

▪ **Timeline**

- ▶ March 12, 2012: Received application
- ▶ April 16, 2012: Posted project on Public Notice for 30 days
- ▶ September 2012: Internal coordination completed
- ▶ July 12, 2013: Provided Archaeological Report
- ▶ September 11, 2013: Issuance of CUP
- ▶ September 24, 2013: Revised drawings – Avoidance of (Sect 106) archaeological sites

▪ **Status**

- ▶ Water Quality Certification
- ▶ Compensatory mitigation plan





Project Area

Sundown Energy, L.P.
Road Repair



Sundown Energy, L.P.

MVN-2011-2607-EQ

Road Repair

- **Description/Location**

- ▶ Install fill/four 6-foot diameter culverts to repair an unimproved road to access existing petroleum facility in the vicinity of the Bohemia Spillway, Plaquemines Parish, LA (43-44 miles above Head of Passes)

- **Timeline**

- ▶ December 19, 2012: Received permit application to install fill/culverts to repair road
- ▶ December 24, 2012: Public Notice issued
- ▶ February - September 2013: Coordinated external and internal comments with applicant

- **Status**

- ▶ Awaiting information from the applicant for MRC coordination
- ▶ Awaiting DEQ Water Quality Certification and USCG Section 9 Permit

