

890370

JOB # 89-00/890370

1 FEB 89

N.O.

DIST.

SAMPLE

NOTES

EFFECTIVE

7/25/90

REC

OLD RIVER CONTROL
LOW SILL STRUCTURE

MR. LETTSWORTH, LA.

TOPOGRAPHY

DATUM - N.G.V.D.

BK. 890370
Pg. 1-30

CONTRACTOR NAME

RUSSO, S. - P.C.

GERDES, L. - T

GALDANY, L. - P

SUTTON, L. - P

Spencer, J. - P
2/1/89

5

JOB # 89-001
OLD RIVER CONTROL LOW SILL
STRUCTURE

890370

890370 2

TOPO

RUSSE, S.
GERDES, L.
ROSHMAN, V.

1 FEB 89

STA. A-VER B-VER DIST.
T ON P.I. 10+15.20

REMARKS

P.I.
0+00

0°00' 180°00'

244'

1 - POWER POLE

9°15'

261'

1 - POWER POLE WITH TRANSFORMER

15°10'

141'

1 - FIRE HYDRANT

161°34'

103'

30" LIVE OAK TREE

270°02'

272°04'

201'

N.W. CORNER OF HOUSE

274°10'

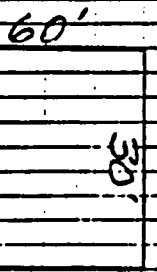
140'

N.E. CORNER OF HOUSE

278°49'

160'

S.E. CORNER OF HOUSE



HOUSE 30' WIDE,
60' LONG WITH TIN
ROOF, WOOD SIDING
& CONC. BLOCKS.

P.I.
0+00

0°00' 03"

HOUSE IN GOOD
CONDITION.

3

LAROSE TO GOLDEN MEADOW VIC. CUTOFF, LA. & PROFILE (LEVEE)

RUSSELL P.M.

1 FEB 89 ZEISS # 31959

JOB # 89-990

890370

890370

3

B.M. X-280

4.50 31.02

26.519 M.S.L.

REMARKS
REF. QUAID 300' D. LINE 4 1970 E. POINT

STA.

+

H.I.

-

ELEV.

REMARKS

0+00

0+50

1+00

1+50

1+60

1+66

1+72

2+00

2+50

3+00

3+00 T.P.

3+00

4.91 31.56

4.37 26.65

4.1

CONTINUED

Pg. 4

THIS BK.

EDGE RMP W/S ONLY
EDGE RMP
EDGE RMP

TPR (TOP ROTARY RIDGE)
TPR 3+00 TOP EXZ HUB @ STA. 3+00

LEVEE
LEVEE

STA.	LEVEE +	H.I.	ELEV.	REMARKS
4+50		31.56	4.3	RUSSO & PTY. 1 FEB 89
5+00			4.1	CONT'D. FROM PG. 3 THIS BK.
5+50			4.0	LEVEE
6+00			4.1	LANDSIDE CROWN
PBM L-110			4.31	PBM L-110, REF. BK. 870310, PG. 24
			27.25	FOUND
			27.23	GIVEN
			+ .02	ERROR

4
JOB # 89-999 890370

890370 4

5

JOB # 89-240

890870

890370 5

FORT ADAMS RETIREMENT - MISS. R.
LEVEE MILE 306.6 L

6 FEB 89
ZEISS # 51959

CONTROL LEVELS

RUSSELL, S.
GARDER, L.
GALLAGHER, L.
RACHKE, L

STA.
PBM
1450

+ H.I. - ELEV.
50.00

DESCRIPTION

PBM 1 - 460 QUAD 290711, LINE 1
1970 EPOCH

T.P.

5.00 55.00
6.00 57.00
4.00 51.00

T.P. TOP 2X2 HUB

T.P.

6.00 57.00
7.00 50.00

T.P. TOP 2X2 HUB

TBM
1450

5.00 55.00
4.50 50.50

TBM 1450 IS A BRASS CAP SET
0.2' BELOW GROUND AT B/L STA.
1450. PAINTED & FLAGGED.

T.P.

5.50 56.00
6.00 50.00

T.P. TOP 2X2 HUB

T.P.

5.00 55.00
5.00 50.00

T.P. TOP 1X2 STAKE

TBM
10400

6.00 56.00
6.00 50.00

TBM 10400 IS A G.I. SPIKE SET
1.5' ABOVE GRD. IN A 12" TSWOOD
TREE, 50' RT OF STA 10400.
TAGGED & PAINTED

CONT. D. Pg. 6 THIS BK

6

CONTROL LEVELS

JOB # 89-240

890370

890370 6

STA. 10+00

+

H.I.

-

ELEV.

PBM L-461

5.00

55.00

10.00

45.00

FOUND

44.98

GIVEN

+ .02' ERROR

RUSSELL & PLY.

6 FEB 89

DESCRIPTION

CONT'D. FROM PG. 5 THIS BK.

PBM L-461 QUAD 290911, LINE 1

V 9710 E PDCAH

7

Job # 89-520 890370

BAYOU BLVD
CONTROL STRUCTURE
X-SECTION'S

STN. PBM 0+00 + H.I. - ELEV. 6.28

31+10 X-SECTION TAKEN @ 90° TO B/L OR AZ. 268°25'

T.P. 3.25 9.78 2.75 6.53

PBM 0+00 3.50 6.28 6.28 0.00
GIVEN DIFF.

890370 7

RUSO S.
GALDEK, W.
ALEXANDER, D.
HUBER, W.

10 FEB 89
ZEISS #31959

LEFTSIDE % RIGHTSIDE
PBM 0+00 SEE Pg 12 THIS BK.
H.I. = 9.28

12.4 9.5 6.2 5.5 6.4 9.7 12.1
45 30 15 0 15 30 45
FST SCORE FSC LST SCORE LST

14.1 13.7 13.1 12.8 13.7
100 80 60 60
TB EDGE WOODS

T.P. TOP 2 X 2 HUB

SEE ABOVE

890370

RUSSO, S.
CHONG, T.
MARIN, C.
FRYER, R.
LANDSIDE 1/2
FLOODSIDE

1 FEB 89
ZENSS #31959

SEE FIG 10 THIS BK.
H.I. = 9.28

1.09

8.19
1.0
1.7 2.5
1.2 2.0
Sdg.s.

5.8
7.7 4.2 2.1
40 80 100
Sdg.s.

6.5
1.0 6.0 6.1
110 120 140
TB

NOTE: THE NEXT SHOT WILL BE
W/E. & W.S. ELEV. THIS SHOT WILL
SHOWN ON SDG.'S CHART OR SC.
THIS SHOT SHOULD NOT EXCE

108 * 89-520 890370

BAROU BIENVENUE
CONTROL STRUCTURE

STA + H.I. - - - - - ELEV.

PBM
BB-2 3.00 9.28

6.28

33475 OVER-BANK SECT TAKEN @
90° TO BK

T.P.

3.25 9.78

2.75 6.53

PBM
BB-2

3.50

6.28

GIVEN
DIFF.

9 JOB # 89-520 890370

BANDU BIENVENUE
CONTROL STRUCTURE
SCOUR SURVEY - LEVELS FOR WATER
SURFACE & GAGE READING

STA. BBM BB-2	+ H.I.	-	ELEV.	M.S.L.
T.P.	3.57	9.85	6.279	
T.P. W.S.	5.05	11.09	3.81	6.04
T.P.	9.90	10.99	10.00	1.09
T.P.	5.15	11.87	4.27	6.72
BPM BB-2	5.57	6.30	5.57	6.30
			6.28	GIVEN
			4.02	ERROR

NOTE: GAGES SHOULD BE READ
AT BEGINNING OF DAY, AT
1200 HRS, & AT END OF
EACH DAY & NOTED IN FIELD
BOOK

890370 9

RUSSO, S.
MARTIN, S.
CHASE, C.
SARDUCCI, MSR.
REMARKS
1 FEB 89
ZEISS # 51959

PBM BB-2 1976 EPOCH
T.P. TDP 2 X 2 HUB
REMARKS
QUAD 290911, Pg. 34

T.P. WATER SURFACE @ 0700 HRS. (REBB)
T.P., TDP 1 X 2 STAKE
SEE ABOVE

GAGE READING
2 FEB 1989
1.0 @ 0700 HRS.
0.8 @ 1200 HRS.
1.0 @ 1530 HRS.

10

JOB # 89-04 890370

890370 10

RUSSELL S.
GERDE, L
KOSHMAN, V
GALBRAITH, L

2 FEB 89

BANK PROTECTION MISS. RIVER
MILE 157.0-R. RICH BEND, LA.
RANGE LAYOUT

STA.

Rg.

Rg. Az.

B/L Az.

REMARKS

P.I. B.S.
132+93.8

252°18'

P.O.R.'S (POINTS ON RANGE)

135+00 U-60

"

300, 340, 360

ALL PIVOTS WOOD POSTS

140+00 U-55

"

320, 360, 380

145+00 U-50

"

340, 380, 400

150+00 U-45

"

360, 380, 420

155+00 U-40

"

320, 420, 440

P.I.
155+55.37

262°20'

156+00 U-39

"

380, 440, 480

157+00 U-38

"

440, 460, 480

158+00 U-37

"

440, 460, 480

P.I.
159+40.30

261°10'

JOB # 89-66

890370

RUSSELL

890370 11

SOUTHWEST PASS, MILE 18.62-R.
PILE DIKES SURVEY - PROFILE

GEDES &
HOSMAN
GALLOWAY, L.

2 FEB 89
ZEISS # 31959

STN.
TBM "A"

+ H.I.

ELEV.

4.00 7.00

3.00

TBM "A"

REMARKS
REF. BK. B70841, PG. 5
H.I. = 7.00

PILE DIKE 18.62-R DIKE 15 90° TO B/L

NOTE: DIKE IS IN FAIR CONDITION.
BE SURE TO SHOW ABRUPT
CHANGES IN ELEVATION. ALSO
MISSING PILES & PILES DAMAGED.
A SKETCH OF DIKE IS HELD PILL.

IF BASELINE IS ON LEFT
SIDE OF CHANNEL, B/L NOTATION
& LINE SHOULD BE ON LEFT SIDE
OF PAGE WORKING LEFT TO RIGHT

T.P.

4.00 6.00

5.00 2.00

3.00

3.00 FD.
3.00 GIVEN
0.00 DIFF.

T.P. TOP IXC. STAKE
SEE ABOVE

3.5	3.6	3.6	3.7	3.7	3.6	3.4	3.5	3.5
300	280	260	240	220	210	204	200	
					BEGIN PILE	PILE	BEGIN	
					DIKE	MISSING	DIKE	
4.0	3.7	3.5	3.6	3.6	3.6	3.5	3.5	
420	400	380	360	344	342	340	320	
				DIKE	BEAM PILE	PILE	BEAM	
				MISSING	MISSING	MISSING	MISSING	

4.5 3.2
424 424
END PILE
DIKE

000013

Rev

000013

Date
File #
Weather

TAB #
TITLE OF TAB

Control TRAVERSE

PT#
PT.#
HI
HR

FSC
PT#
HR.

DIR.
BS
FS
160-00-00

REV.
359-00-00
-02
-

Dir
FS
BS
Horiz

REV
-
-

COUNT TO PAGE # THIS BOOK

HORIZ DIST
TRAVERSE TO FS PT# -

FT. METERS

359.998	32.081
.998	.081
<u>359.998</u>	<u>32.081</u>

Small
SKETCH
HERE

20805-027

051025

T. Bacon
Fly

051025 4-25-05

Temp	Sta. 3	Topo	BS	Elev.
559	5119	6.00	/	96.40
4				99.57
1458				
1473				
1474				
1477				
1478				
1484				
1509				
1510		9.60		
1519		5.90		
1523		6.00		
1523	5.17			87.24
559		6.00	/	96.40
1524		5.90		
1531				

Fly 2
Fly 1

BS. ER4
END ER4

BS & Misc Topo
END Misc F.W.U.

Corner of Brent's house

FLY-5

(Fly 2)

(ER-4)

(W.U.)

(W.U.)

(BS-2)

(RIP)

(RIP)

(BS-1)

(BS-1)

(FLY-5)

(Box)
(Box)

14

041012 50854-48

X-sections

713 acres 041012

8-26-54

14

make cut through the leaves and stems

Pl. # HI NR BS

Elev.

40 4.84

6.00

-

22.53

15

6.00

-

22.90

472

6.00

-

22.90

493

6.00

-

22.90

61

4.84

6.00

-

22.80

15

6.00

-

22.90

494

9.60

-

22.90

495

6.00

-

22.90

496

6.00

-

22.90

497

6.00

-

22.90

498

6.00

-

22.90

519

9.60

-

22.90

529

6.00

-

22.90

62

4.74

6.00

-

22.78

15

6.00

-

22.90

530

6.00

-

22.90

551

6.00

-

22.90

713 acres

Pl. # 15

Pl. # 15

Pl. # 15

Pl. # 15

Pl. # 15

Pl. # 15

Pl. # 15

Pl. # 15

Pl. # 15

Pl. # 15

Pl. # 15

Pl. # 15

Pl. # 15

Pl. # 15

Pl. # 15

Pl. # 15

Pl. # 15

14

14

06-021

051041

T. Bacon
PHY

051041

11-30-05

1

Violet Examl Profile

Sta. + HI - ELEV.

L278 4.08 11.00 0.32 6.92

TP1 11.49 22.17 0.32 10.68

TP2 2.98 22.16 2.99 19.18

TP3 2.53 22.99 1.70 20.46

TP4 3.17 23.54 2.62 20.37

TP5 2.87 24.10 2.31 21.23

TP6 4.34 25.39 3.05 21.05

TP7 4.46 24.30 5.55 19.84

TP8 4.52 23.82 5.00 19.30

TP9 3.82 23.69 3.95 19.87

TP10 4.12 23.39 4.42 19.27

LM570 5.38 18.01

NAUD 88 2005 USGS Gaudi CHALMERS

1994.

● Top 1x2

● Top 1x2

● Top 1x2

● Top 1x2

● " "

● " "

● " "

● " "

● " "

● " "

● " "

● " "

● " "

● " "

● " "

● " "

● " "

● " "

Top of new sta. 460632.44