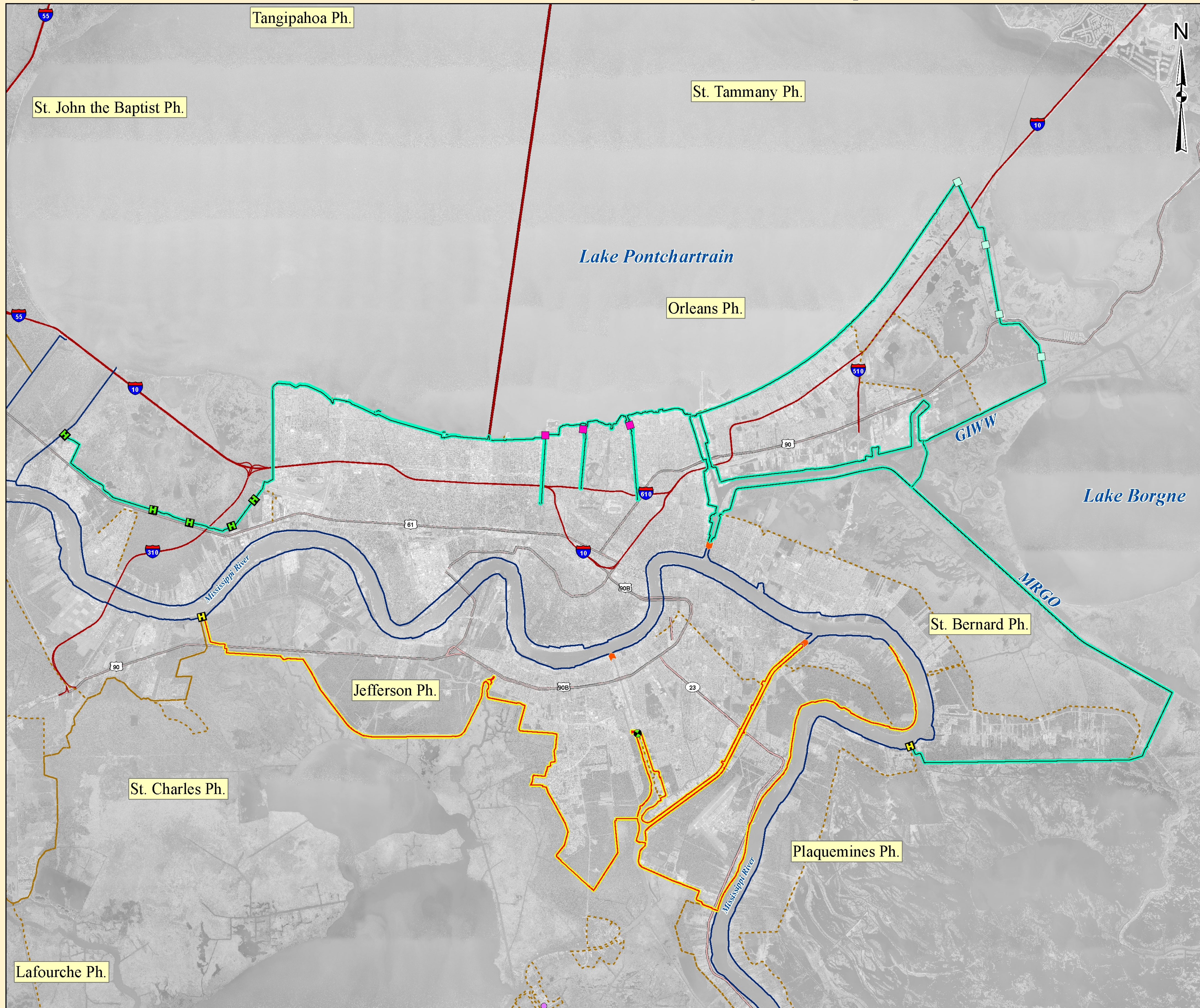


# LPV, WBV and MRL Project Alignments



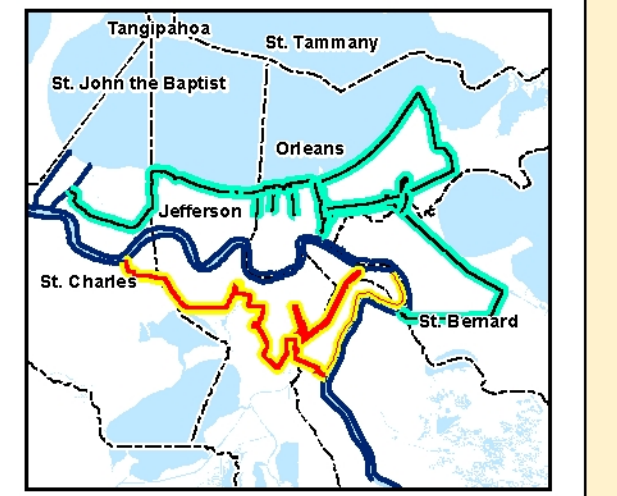
- Legend**
- LPV, WBV and MRL Project Alignments
    - Lake Pontchartrain and Vicinity
    - Westbank and Vicinity
    - MRL Co-Located Projects
    - MRL
  - STRUCTURE TYPE**
    - Lock
    - NOPumpStation
    - Interim Control Structure
    - Federal Water Control Structure
    - Sector Gate
    - Channel Floodgate
    - Weir
    - Control Structure
    - Diversion Structure
    - Drainage\_Structure
    - Navigable Structure
    - LEVEE CENTERLINES
    - Parishes

**MRL Co-Located Hydraulic Reach**  
 Hydraulic Elevations 2007/2057  
 Structural Superiority NA/2057

**LPV/WBV Hydraulic Reach**  
 Hydraulic Elevations 2007/2057  
 Structural Superiority NA/2057

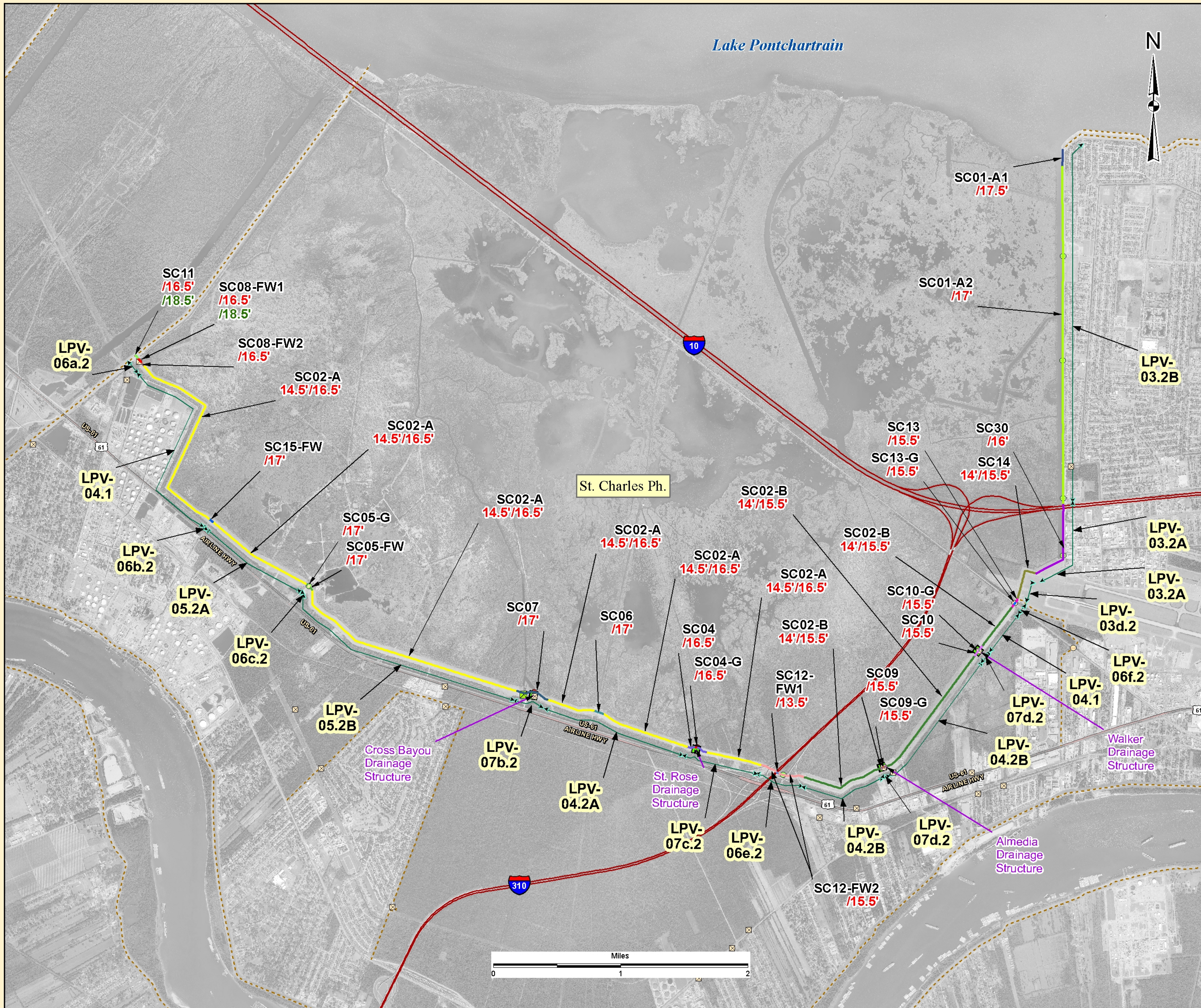
Levee sections have hydraulic elevation for both existing (LPV/WBV 2007) and future (2057) conditions in red font. Hard structures are designed and built for future conditions only. They have 2057 hydraulic elevation in red font. If structural superiority has been added, the label includes 2057 design elevation in green font below the hydraulic elevation.

Last Modified : Date: 7/18/2014



IMAGERY  
 Projected coordinate system name:  
 NAD\_1983\_UTM\_Zone\_15N  
 Geographic coordinate system name:  
 GCS\_North\_American\_1983  
 Resolution: 1.000000

# LPV St. Charles Parish East Bank



2014 Addendum to LPV-WBV  
1% Exceedance 2007-2057 Design

SECTION_NAME	STRUCTURE TYPE
SC01-A1	Lock
SC01-A2	NO Pump Station
SC02-A	Interim Control Structure
SC02-B	Federal Water Control Structure
SC04	Sector Gate
SC04-G	Channel Floodgate
SC05-FW	Weir
SC05-G	Control Structure
SC06	Diversion Structure
SC07	Drainage Structure
SC08-FW1	Navigable Structure
SC08-FW2	Channel Floodgate
SC09	Critter Crossing
SC09-G	Industrial Floodgate
SC10	Pedestrian Floodgate
SC10-G	Railroad Floodgate
SC11	Road Floodgate
SC12-FW1	Phase 2 LPV Contracts
SC12-FW2	LEVEE CENTERLINE
SC13	Fanshes
SC13-G	
SC14	
SC15-FW	
SC30	

**Hydraulic Reach**  
Hydraulic Elevations 2007/2057  
Structural Superiority NA/2057

Levee sections have hydraulic elevation for both existing (2007) and future (2057) conditions in red font. Hard structures are designed and built for future conditions only. They have 2057 hydraulic elevation in red font. If structural superiority has been added, the label includes 2057 design elevation in green font below the hydraulic elevation.

Last Modified : Date: 2/3/2015



IMAGERY  
Projected coordinate system name:  
NAD\_1983\_UTM\_Zone\_15N  
Geographic coordinate system name:  
GCS\_North\_American\_1983  
Resolution: 1.000000

# LPV Jefferson Parish Lakefront

LPV-01.2 and LPV-20.2  
Foreshore Protection A and  
Foreshore Protection B Contracts  
run length of Jefferson Lakefront levee.



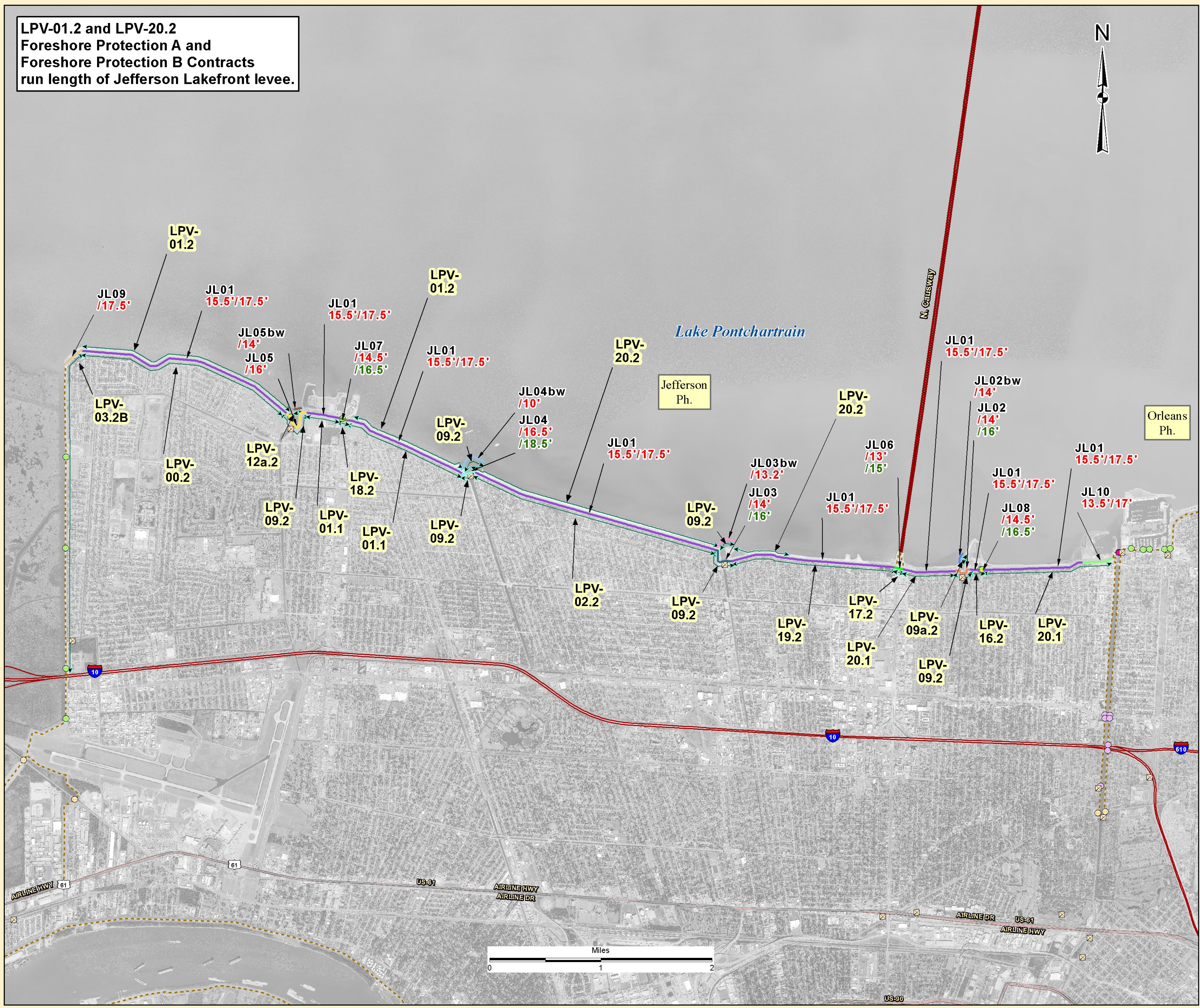
2014 Addendum to LPV-WBV  
1% Exceedance 2007-2057 Design

**SECTION\_NAME**

- JL01
- JL02
- JL02bw
- JL03
- JL03bw
- JL04
- JL04bw
- JL05
- JL05bw
- JL06
- JL07
- JL08
- JL09
- JL10

**STRUCTURE TYPE**

- Lock
- NO Pump Station
- Interim Control Structure
- Federal Water Control Structure
- Sector Gate
- Channel Floodgate
- Weir
- Control Structure
- Diversion Structure
- Drainage Structure
- Navigable Structure
- Channel Floodgate
- Critter Crossing
- Industrial Floodgate
- Pedestrian Floodgate
- Railroad Floodgate
- Road Floodgate
- Phase 2 LPV Contracts Breakwaters
- LEVEE CENTERLINE
- Parishes



**Hydraulic Reach**  
Hydraulic Elevations 2007/2057  
Structural Superiority NA/2057

Levee sections have hydraulic elevation for both existing (2007) and future (2057) conditions in red font. Hard structures are designed and built for future conditions only. They have 2057 hydraulic elevation in red font. If structural superiority has been added, the label includes 2057 design elevation in green font below the hydraulic elevation.

Last Modified : Date : 8/28/2014



IMAGERY  
Projected coordinate system name:  
NAD\_1983\_UTM\_Zone\_15N  
Geographic coordinate system name:  
GCS\_North\_American\_1983  
Resolution: 1.000000

# LPV Orleans Parish Metro Lakefront



U.S. ARMY CORPS OF ENGINEERS  
NEW ORLEANS DISTRICT

2014 Addendum to LPV-WBV

1% Exceedance 2007-2057 Design

SECTION_NAME
NO01
NO06-FW
NO06-LT
NO07-A
NO07-B
NO07-BL
NO07-C
NO08
NO09
NO10-LI
NO10-LL
NO11
NO12
NO13
NO14-G1
NO14-G2
NO14-G3
NO14-G4
NO14-L1
NO14-L1A
NO14-L2
NO14-L4A
NO15-G2
NO15-G3
NO15-G4
NO15-G5
NO15-L
NO15-L9A
NO15-L9B
NO15-L9C
NO16
NO17
NO20-FW1
NO20-G1
NO20-G2
NO20-FW2
NO20-G1
NO20-G2

STRUCTURE TYPE
Lock
NO Pump Station
Interim Control Structure
Federal Water Control Structure
Sector Gate
Channel Floodgate
Weir
Control Structure
Diversion Structure
Navigable Structure
Channel Floodgate
Critter Crossing
Industrial Floodgate
Pedestrian Floodgate
Railroad Floodgate
Road Floodgate
Phase 2 LPV Contracts



Lake Pontchartrain



Levee sections have hydraulic elevation for both existing (2007) and future (2057) conditions in red font. Hard structures are designed and built for future conditions only. They have 2057 hydraulic elevation in red font. If structural superiority has been added, the label includes 2057 design elevation in green font below the hydraulic elevation.

**Hydraulic Reach**  
**Hydraulic Elevations 2007/2057**  
**Structural Superiority NA/2057**

Last Modified : Date : 2/2/2015

IMAGERY  
 Projected coordinate system name:  
 NAD\_1983\_UTM\_Zone\_15N  
 Geographic coordinate system name:  
 GCS\_North\_American\_1983  
 Resolution: 1.000000

# LPV Orleans Parish Lakefront East



U.S. ARMY CORPS OF ENGINEERS  
NEW ORLEANS DISTRICT

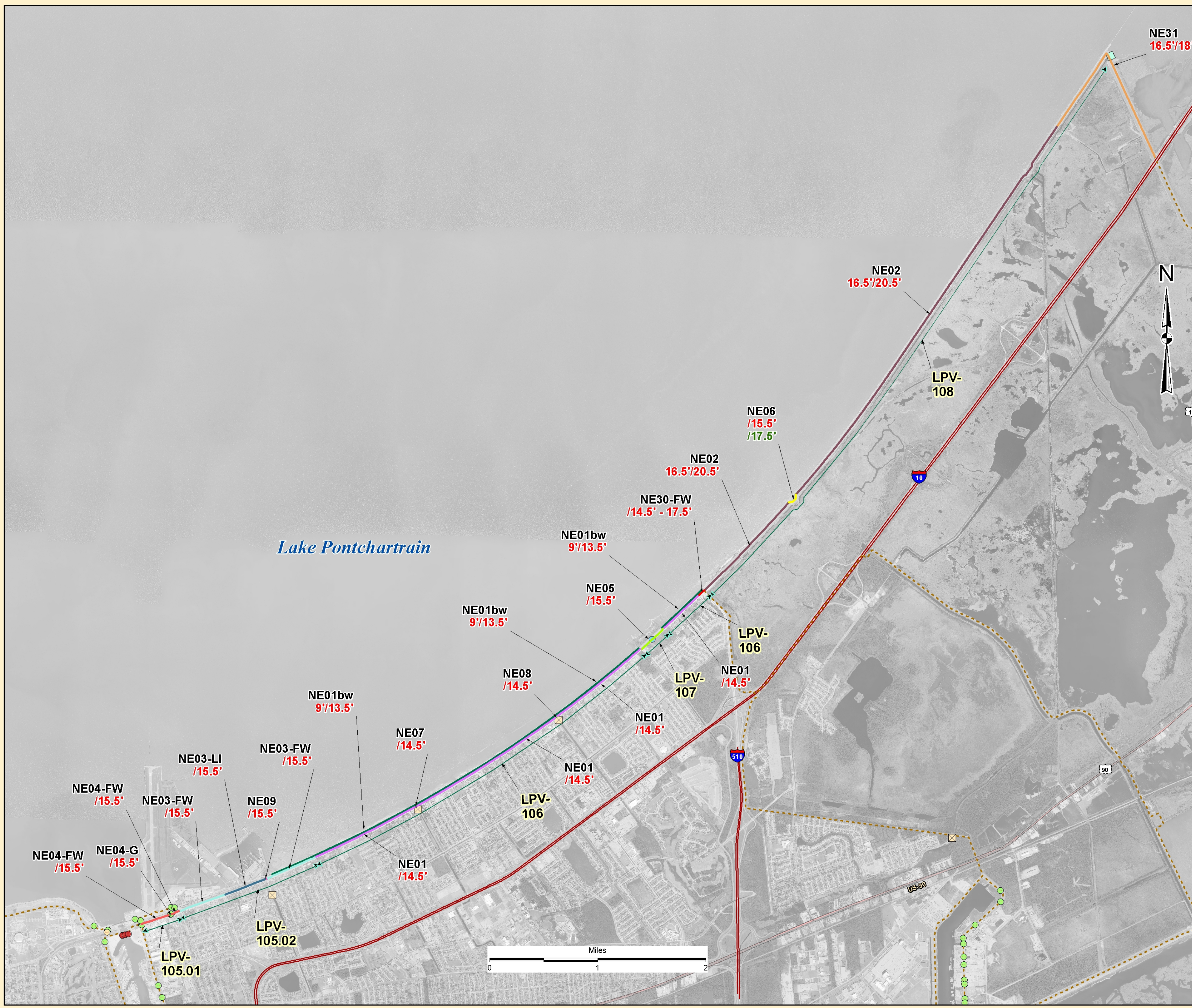
**2014 Addendum to LPV-WBV**  
1% Exceedance 2007-2057 Design

**SECTION\_NAME**

- NE01
- NE01bw
- NE02
- NE03-FW
- NE03-LI
- NE04-FW
- NE04-G
- NE05
- NE06
- NE07
- NE08
- NE09
- NE30-FW
- NE31

**STRUCTURE TYPE**

- Lock
- NO Pump Station
- Interim Control Structure
- Federal Water Control Structure
- Sector Gate
- Channel Floodgate
- Weir
- Control Structure
- Diversion Structure
- Navigable Structure
- Channel Floodgate
- Critter Crossing
- Industrial Floodgate
- Pedestrian Floodgate
- Railroad Floodgate
- Road Floodgate
- Phase 2 LPV Contracts
- LEVEE CENTERLINE STATIONS
- Parishes



**Hydraulic Reach**  
Hydraulic Elevations 2007/2057  
Structural Superiority NA/2057

Levee sections have hydraulic elevation for both existing (2007) and future (2057) conditions in red font. Hard structures are designed and built for future conditions only. They have 2057 hydraulic elevation in red font. If structural superiority has been added, the label includes 2057 design elevation in green font below the hydraulic elevation.

Last Modified : Date: 6/23/2014



IMAGERY  
Projected coordinate system name:  
NAD\_1983\_UTM\_Zone\_15N  
Geographic coordinate system name:  
GCS\_North\_American\_1983  
Resolution: 1.000000

# LPV Orleans Parish - South Point to MRGO/GIWW Closure



U.S. ARMY CORPS OF ENGINEERS  
NEW ORLEANS DISTRICT

2014 Addendum to LPV-WBV  
1% Exceedance 2007-2057 Design

SECTION_NAME
NE03-FW
NE03-LI
NE04-FW
NE04-G
NE07
NE09
NE10-A
NE10-B
NE10-C
NE11-A
NE11-B
NE12-A
NE12-B-FW
NE12-B-L
NE13
NE14
NE15-G
NE15-FW
NE16
NE17
NE31
NE32

STRUCTURE TYPE
Lock
NO Pump Station
Interim Control Structure
Federal Water Control Structure
Sector Gate
Channel Floodgate
Weir
Control Structure
Diversion Structure
Navigable Structure
Channel Floodgate
Critter Crossing
Industrial Floodgate
Pedestrian Floodgate
Railroad Floodgate
Road Floodgate
Phase 2 LPV Contracts
LEVEE CENTERLINE
Parishes

**Hydraulic Reach**  
Hydraulic Elevations 2007/2057  
Structural Superiority NA/2057

Levee sections have hydraulic elevation for both existing (2007) and future (2057) conditions in red font. Hard structures are designed and built for future conditions only. They have 2057 hydraulic elevation in red font. If structural superiority has been added, the label includes 2057 design elevation in green font below the hydraulic elevation.

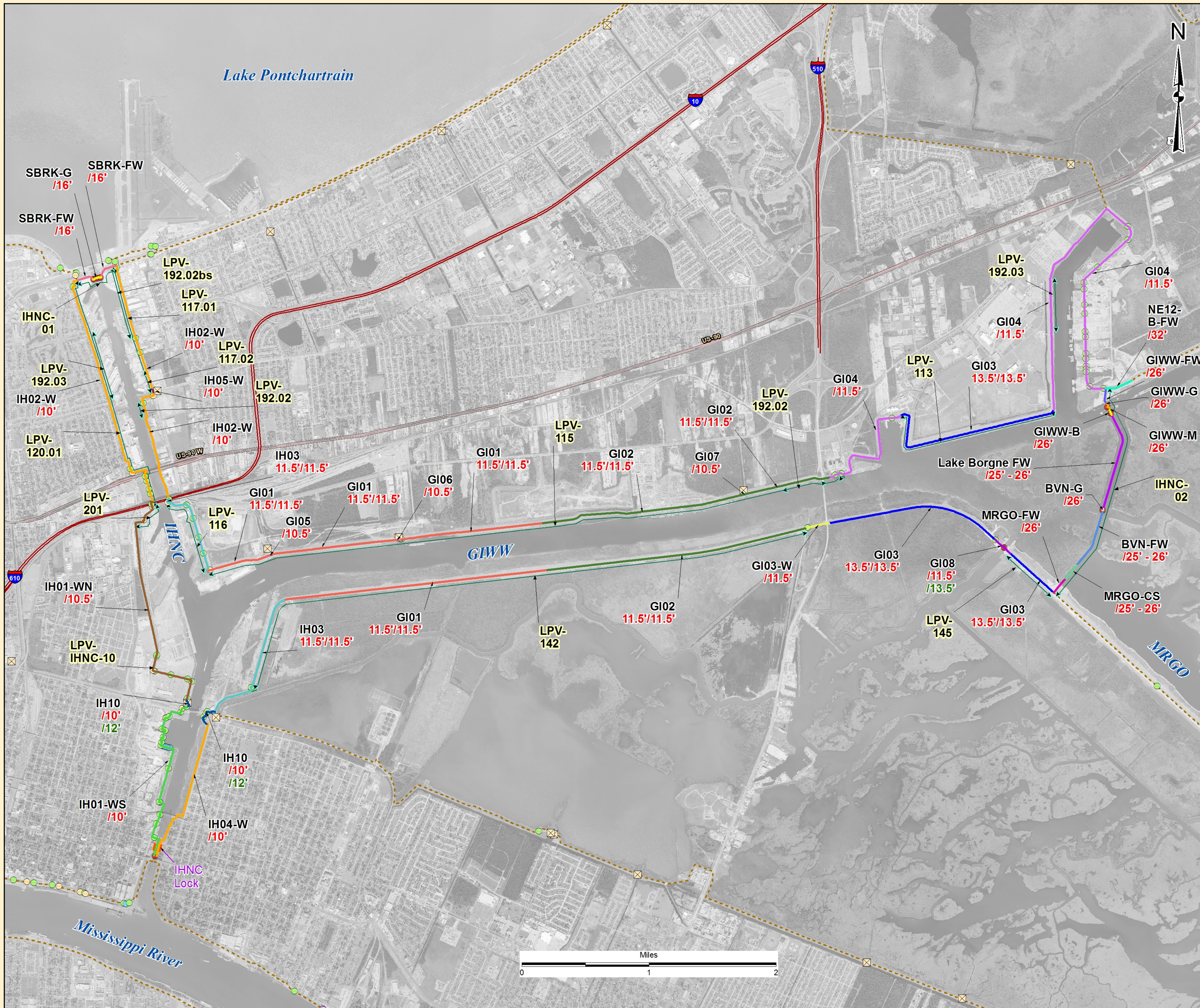

Last Modified : Date: 6/23/2014



IMAGERY  
Projected coordinate system name:  
NAD\_1983\_UTM\_Zone\_15N  
Geographic coordinate system name:  
GCS\_North\_American\_1983  
Resolution: 1.000000



# LPV IHNC and GIWW Basin

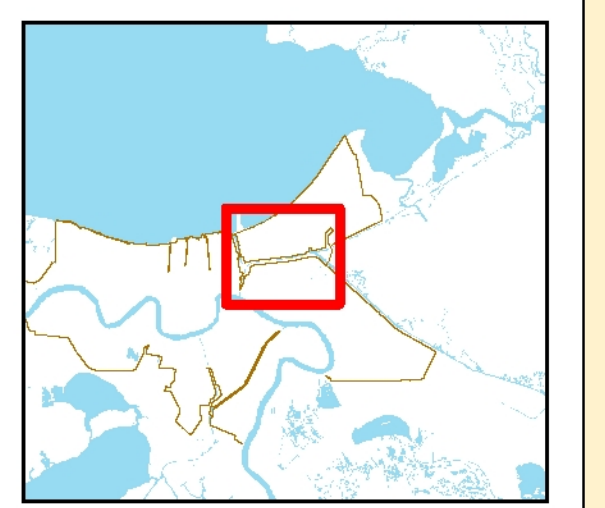
U.S. ARMY CORPS OF ENGINEERS  
NEW ORLEANS DISTRICT

- 2014 Addendum to LPV-WBV**  
**1% Exceedance 2007-2057 Design**
- SECTION\_NAME**
- BVN-FW
  - BVN-G
  - GI01
  - GI02
  - GI03
  - GI03-W
  - GI04
  - GI05
  - GI06
  - GI07
  - GI08
  - GIWW-B
  - GIWW-FW
  - GIWW-G
  - GIWW-M
  - IH01-Wn
  - IH01-Ws
  - IH02-W
  - IH03
  - IH04-W
  - IH05-W
  - IH10
  - Lake Borgne FW
  - MRGO-CS
  - MRGO-FW
  - NE12-B-FW
  - SBRK-FW
  - SBRK-G
- STRUCTURE TYPE**
- Lock
  - NO Pump Station
  - Interim Control Structure
  - Federal Water Control Structure
  - Sector Gate
  - Channel Floodgate
  - Weir
  - Control Structure
  - Diversion Structure
  - Drainage Structure
  - Navigable Structure
  - Channel Floodgate
  - Critter Crossing
  - Industrial Floodgate
  - Pedestrian Floodgate
  - Railroad Floodgate
  - Road Floodgate
  - Phase 2 LPV Contracts
  - LEVEE CENTERLINE
  - Parishes

**Hydraulic Reach**  
Hydraulic Elevations 2007/2057  
Structural Superiority NA/2057

Levee sections have hydraulic elevation for both existing (2007) and future (2057) conditions in red font. Hard structures are designed and built for future conditions only. They have 2057 hydraulic elevation in red font. If structural superiority has been added, the label includes 2057 design elevation in green font below the hydraulic elevation.

Last Modified : Date: 6/30/2014



IMAGERY  
Projected coordinate system name:  
NAD\_1983\_UTM\_Zone\_15N  
Geographic coordinate system name:  
GCS\_North\_American\_1983  
Resolution: 1.000000

# LPV St. Bernard Parish



2014 Addendum to LPV-WBV  
1% Exceedance 2007-2057 Design

- SECTION\_NAME**
- SB11
  - SB12
  - SB13
  - SB15
  - SB16
  - SB161-G1
  - SB161-G2
  - SB161-LT
  - SB17
  - SB19-FW
  - SB19-G
  - SB20
  - SB21-FW
  - SB21-G1
  - SB21-G2
  - SB21-MRL tie-in
  - SB21-TR
- STRUCTURE TYPE**
- Lock
  - NO Pump Station
  - Interim Control Structure
  - Federal Water Control Structure
  - Sector Gate
  - Channel Floodgate
  - Weir
  - Control Structure
  - Diversion Structure
  - Drainage Structure
  - Navigable Structure
  - Channel Floodgate
  - Critter Crossing
  - Industrial Floodgate
  - Pedestrian Floodgate
  - Railroad Floodgate
  - Road Floodgate
  - Phase 2 LPV Contracts
  - LEVEE CENTERLINE
  - Parishes

**Hydraulic Reach**  
Hydraulic Elevations 2007/2057  
Structural Superiority NA/2057

Levee sections have hydraulic elevation for both existing (2007) and future (2057) conditions in red font. Hard structures are designed and built for future conditions only. They have 2057 hydraulic elevation in red font. If structural superiority has been added, the label includes 2057 design elevation in green font below the hydraulic elevation.

Last Modified : Date: 11/3/2014

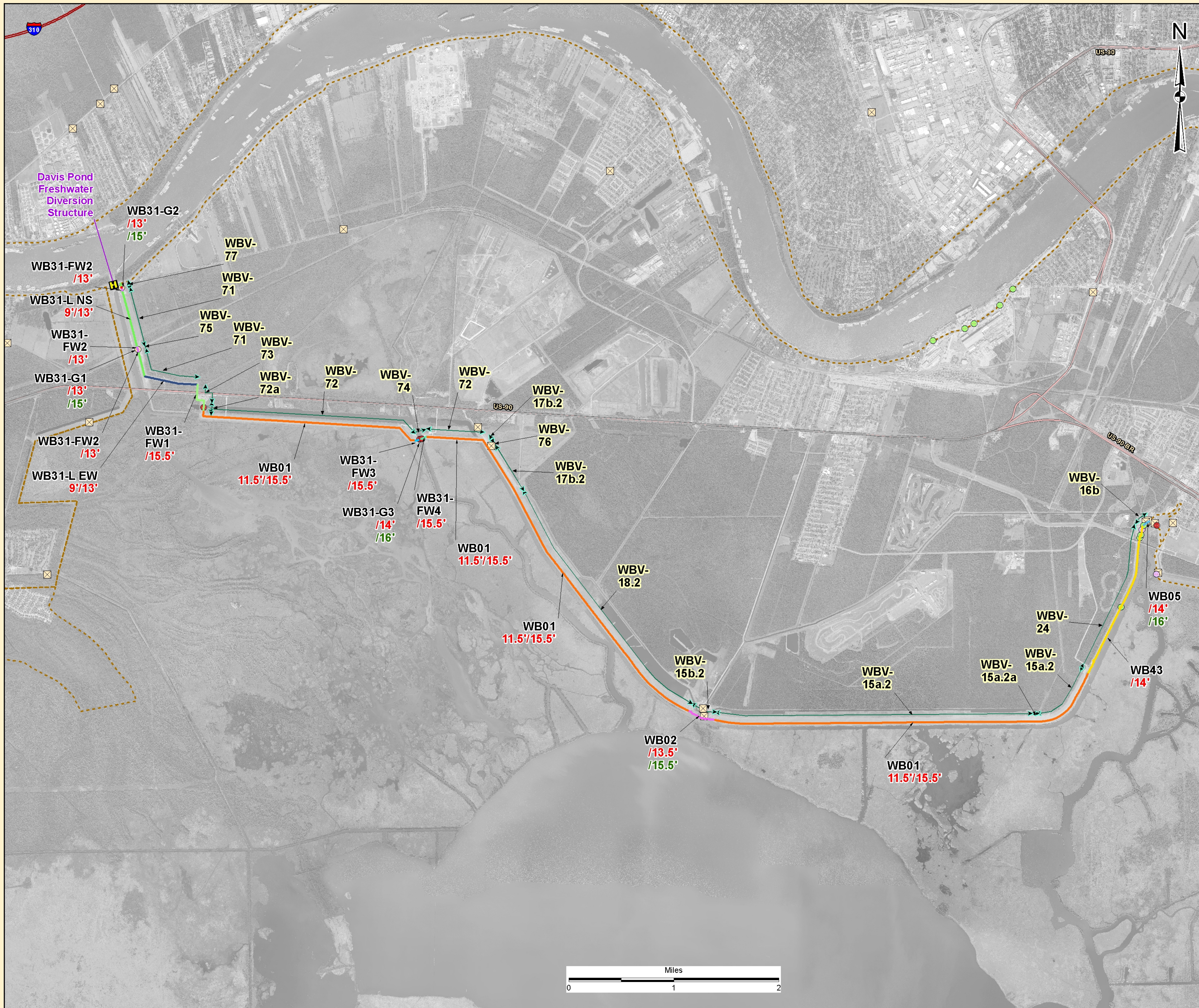


IMAGERY  
Projected coordinate system name:  
NAD\_1983\_UTM\_Zone\_15N  
Geographic coordinate system name:  
GCS\_North\_American\_1983  
Resolution: 1.000000





# WBV Lake Cataouatche Reach

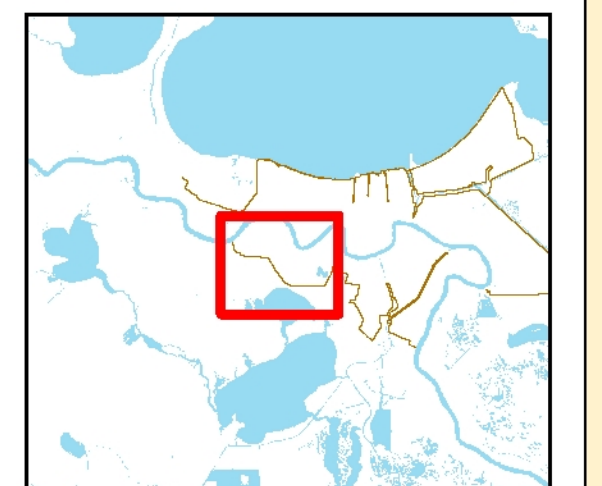


- 2014 Addendum to LPV-WBV**  
**1% Exceedance 2007-2057 Design**
- SECTION NAME**
- WB01
  - WB02
  - WB05
  - WB31-FW1
  - WB31-FW2
  - WB31-FW3
  - WB31-FW4
  - WB31-G1
  - WB31-G2
  - WB31-G3
  - WB31-L EW
  - WB31-L NS
  - WB43
- STRUCTURE TYPE**
- Lock
  - NOPumpStation
  - New Pump Station
  - Interim Control Structure
  - Federal Water Control Structure
  - Sector Gate
  - Channel Floodgate
  - Weir
  - Control Structure
  - Diversion Structure
  - Drainage\_Structure
  - Navigable Structure
  - Channel Floodgate
  - Critter Crossing
  - Industrial Floodgate
  - Pedestrian Floodgate
  - Railroad Floodgate
  - Road Floodgate
  - Phase 2 WBV Contracts
  - LEVEE CENTERLINE
  - Parishes

**Hydraulic Reach**  
**Hydraulic Elevations 2007/2057**  
**Structural Superiority NA/2057**

Levee sections have hydraulic elevation for both existing (2007) and future (2057) conditions in red font. Hard structures are designed and built for future conditions only. They have 2057 hydraulic elevation in red font. If structural superiority has been added, the label includes 2057 design elevation in green font below the hydraulic elevation.

Last Modified : Date: 1/28/2015



IMAGERY  
 Projected coordinate system name:  
 NAD\_1983\_UTM\_Zone\_15N  
 Geographic coordinate system name:  
 GCS\_North\_American\_1983  
 Resolution: 1.000000

# WBV Bayou Segnette



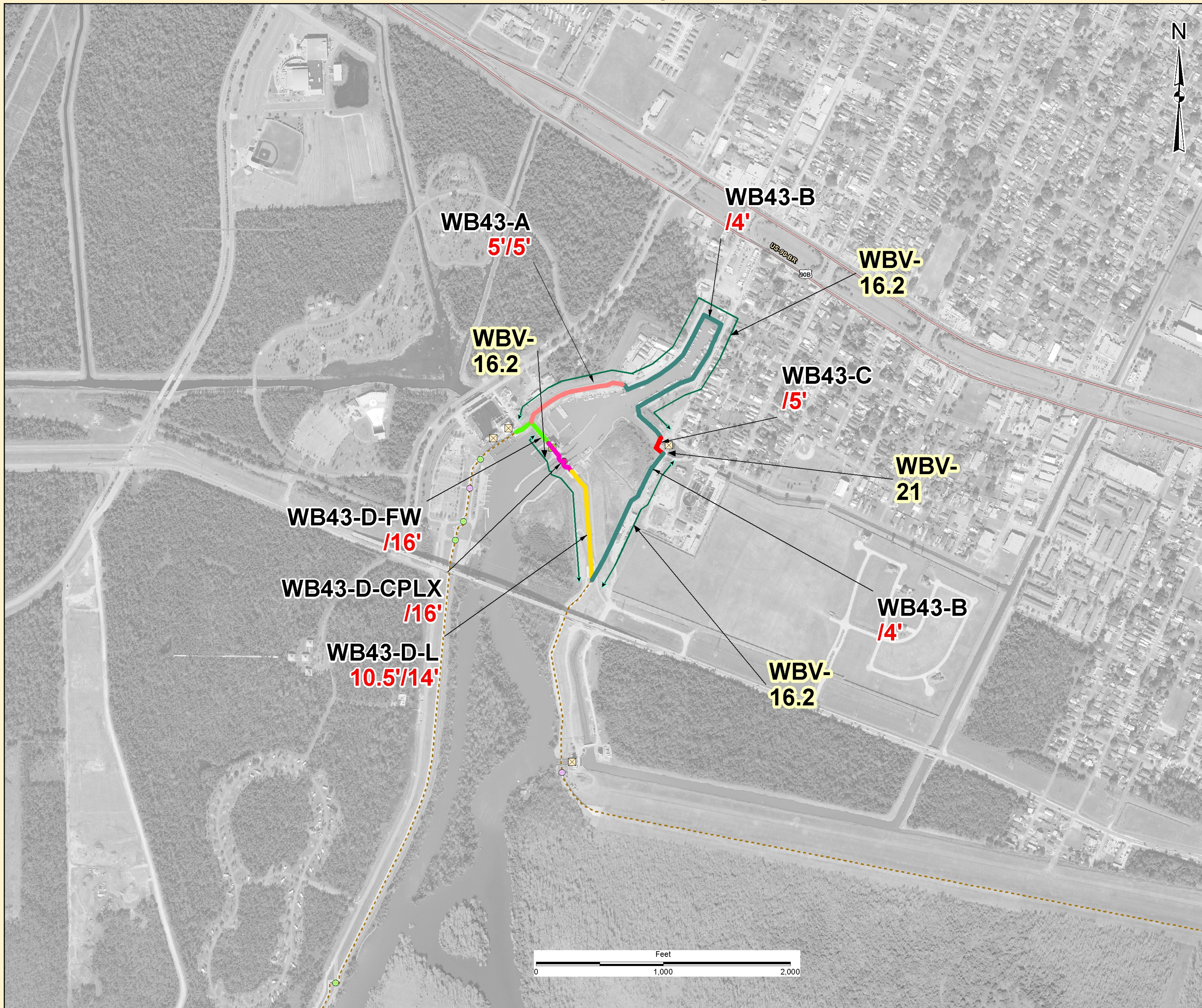
U.S. ARMY CORPS OF ENGINEERS  
NEW ORLEANS DISTRICT

2014 Addendum to LPV-WBV  
1% Exceedance 2007-2057 Design

SECTION_NAME
WB43-A
WB43-B
WB43-C
WB43-D-CPLX
WB43-D-FW
WB43-D-L

STRUCTURE TYPE
Lock
NO Pump Station
New Pump Station
Interim Control Structure
Federal Water Control Structure
Sector Gate
Channel Floodgate
Weir
Control Structure
Diversion Structure
Drainage Structure
Navigable Structure
Channel Floodgate
Critter Crossing
Industrial Floodgate
Pedestrian Floodgate
Railroad Floodgate
Road Floodgate
LEVEE CENTERLINE
Phase 2 LPV Contracts
Parishes



**Hydraulic Reach**  
Hydraulic Elevations 2007/2057  
Structural Superiority NA/2057

Levee sections have hydraulic elevation for both existing (2007) and future (2057) conditions in red font. Hard structures are designed and built for future conditions only. They have 2057 hydraulic elevation in red font. If structural superiority has been added, the label includes 2057 design elevation in green font below the hydraulic elevation.

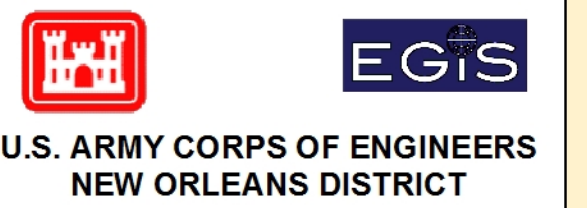
Last Modified : Date: 7/17/2014



IMAGERY  
Projected coordinate system name:  
NAD\_1983\_UTM\_Zone\_15N  
Geographic coordinate system name:  
GCS\_North\_American\_1983  
Resolution: 1.000000



# WBV East of Harvey Canal Reach

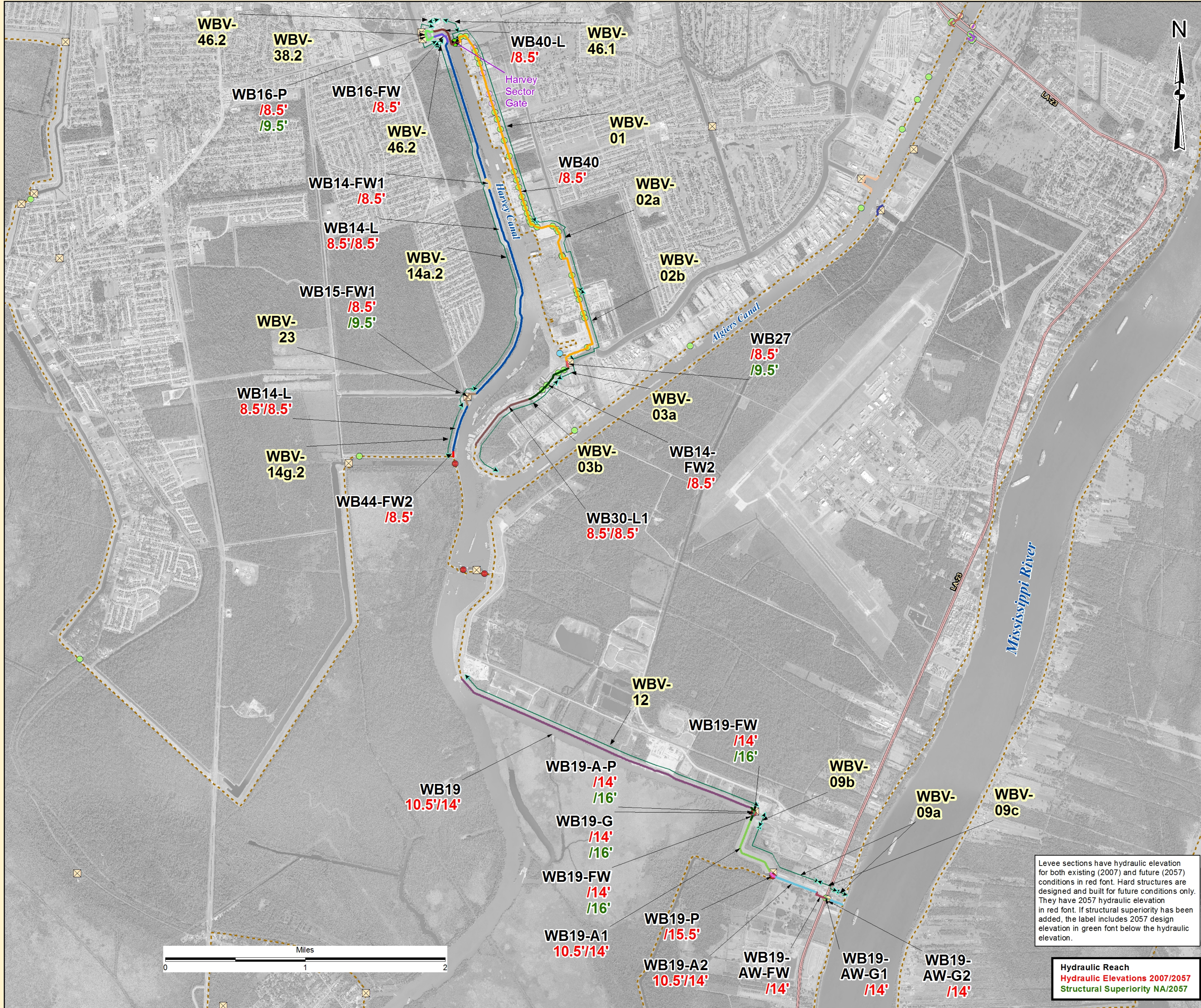


2014 Addendum to LPV-WBV  
1% Exceedance 2007-2057 Design

SECTION_NAME
WB14-FW1
WB14-FW2
WB14-L
WB15-FW1
WB16-FW
WB16-P
WB19
WB19-A-P
WB19-A1
WB19-A2
WB19-AW-FW
WB19-AW-G1
WB19-AW-G2
WB19-FW
WB19-G
WB19-P
WB23-P1
WB23-P2
WB23-P3
WB24
WB27
WB30-FW1
WB30-FW2
WB30-G2
WB30-G3
WB30-G4
WB30-G5
WB30-G6
WB30-G7
WB30-G8
WB30-L1
WB30-W-P1
WB30-W-P2
WB40
WB40-L
WB44-FW2

STRUCTURE TYPE
Lock
NOPumpStation
Interim Control Structure
Federal Water Control Structure
Sector Gate
Channel Floodgate
Weir
Control Structure
Diversion Structure
Drainage_Structure
Navigable Structure
Channel Floodgate
Critter Crossing
Industrial Floodgate
Pedestrian Floodgate
Railroad Floodgate
Road Floodgate
Phase 2 WBV Contracts
LEVEE CENTERLINE
Parishes



Levee sections have hydraulic elevation for both existing (2007) and future (2057) conditions in red font. Hard structures are designed and built for future conditions only. They have 2057 hydraulic elevation in red font. If structural superiority has been added, the label includes 2057 design elevation in green font below the hydraulic elevation.

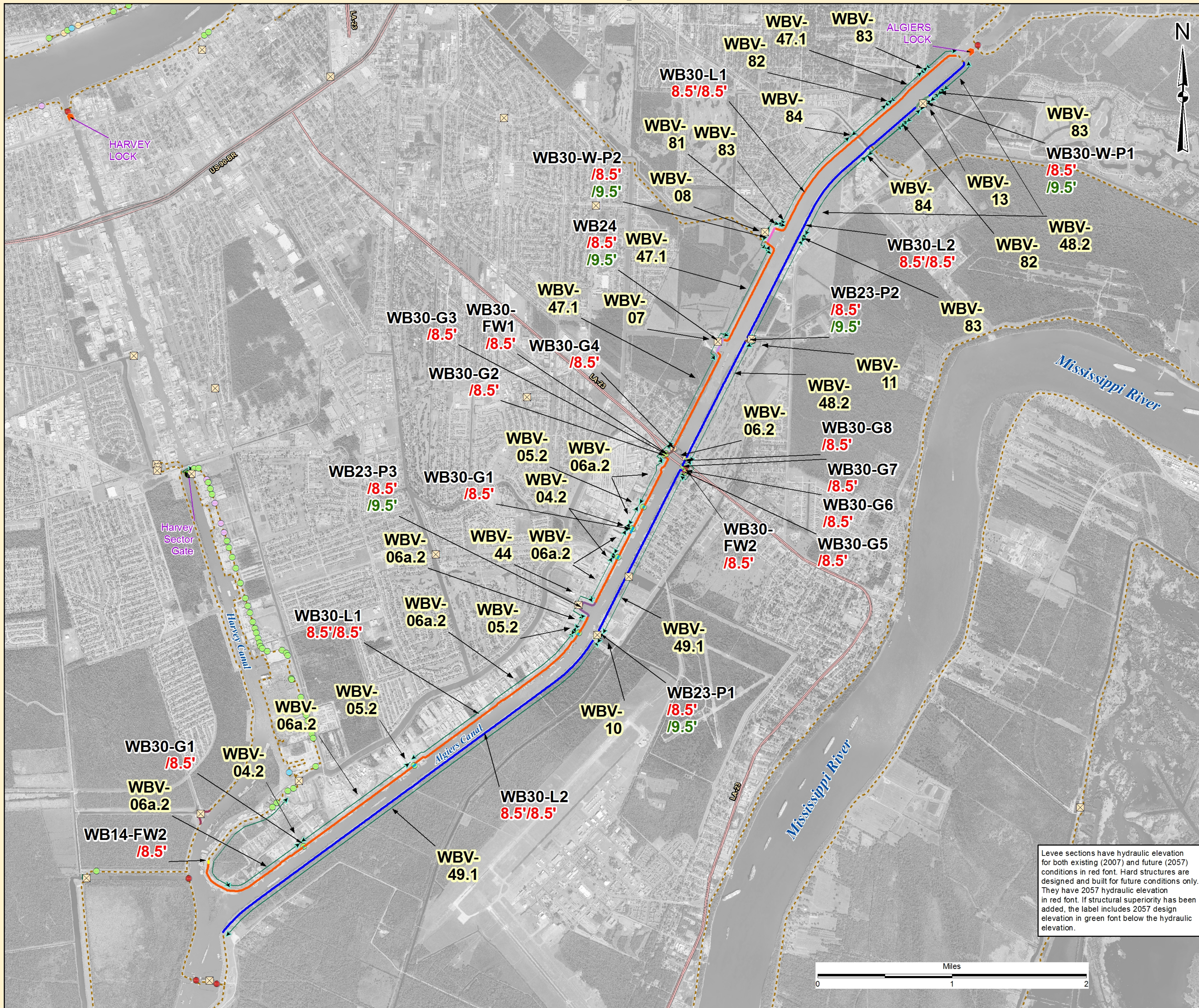
**Hydraulic Reach**  
Hydraulic Elevations 2007/2057  
Structural Superiority NA/2057

Last Modified : Date: 6/30/2014



IMAGERY  
Projected coordinate system name:  
NAD\_1983\_UTM\_Zone\_15N  
Geographic coordinate system name:  
GCS\_North\_American\_1983  
Resolution: 1.000000

# WBV Algiers Canal Reach



**EGIS**  
U.S. ARMY CORPS OF ENGINEERS  
NEW ORLEANS DISTRICT

**2014 Addendum to LPV-WBV**  
1% Exceedance 2007-2057 Design

**SECTION\_NAME**

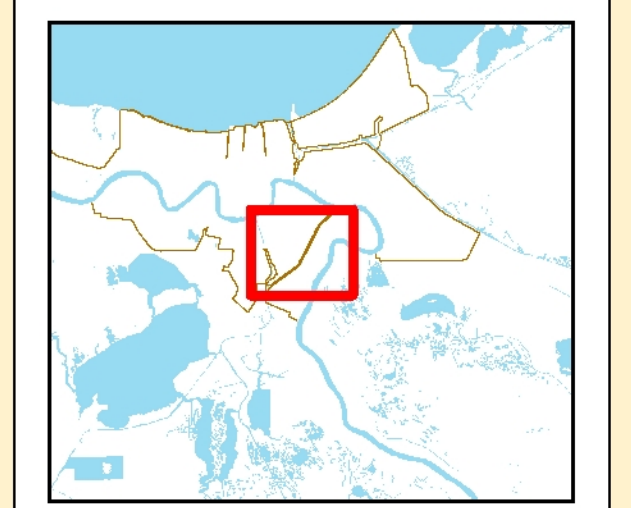
- WB14-FW2
- WB15-FW1
- WB19
- WB19-A-P
- WB19-A1
- WB19-A2
- WB19-AW-FW
- WB19-AW-G1
- WB19-AW-G2
- WB19-FW
- WB19-G
- WB19-P
- WB23-P1
- WB23-P2
- WB23-P3
- WB24
- WB30-FW1
- WB30-FW2
- WB30-G1
- WB30-G2
- WB30-G3
- WB30-G4
- WB30-G5
- WB30-G6
- WB30-G7
- WB30-G8
- WB30-L1
- WB30-L2
- WB30-W-P1
- WB30-W-P2

**STRUCTURE TYPE**

- Lock
- NOPumpStation
- Interim Control Structure
- Federal Water Control Structure
- Sector Gate
- Channel Floodgate
- Weir
- Control Structure
- Diversion Structure
- Drainage\_Structure
- Navigable Structure
- Channel Floodgate
- Critter Crossing
- Industrial Floodgate
- Pedestrian Floodgate
- Railroad Floodgate
- Road Floodgate
- Phase 2 WBV Contracts
- LEVEE CENTERLINE
- Parishes

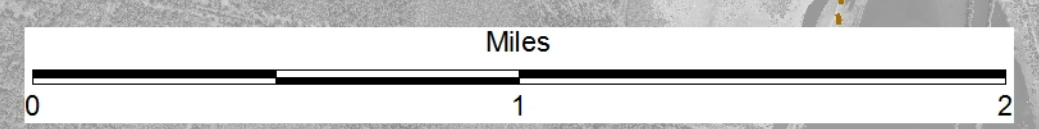
**Hydraulic Reach**  
Hydraulic Elevations 2007/2057  
Structural Superiority NA/2057

Last Modified : Date: 6/30/2014

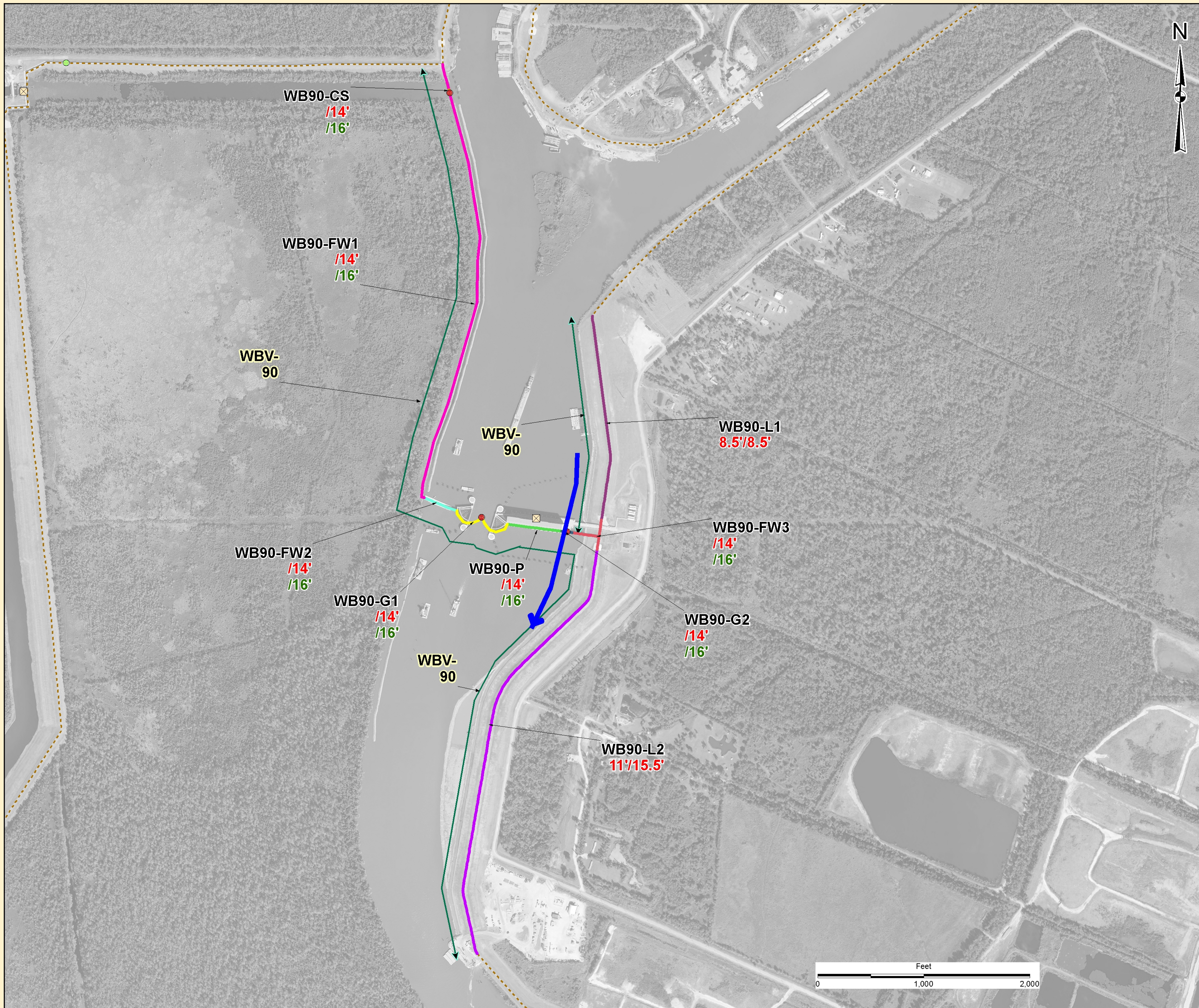


IMAGERY  
Projected coordinate system name:  
NAD\_1983\_UTM\_Zone\_15N  
Geographic coordinate system name:  
GCS\_North\_American\_1983  
Resolution: 1.000000

Levee sections have hydraulic elevation for both existing (2007) and future (2057) conditions in red font. Hard structures are designed and built for future conditions only. They have 2057 hydraulic elevation in red font. If structural superiority has been added, the label includes 2057 design elevation in green font below the hydraulic elevation.



# WBV West Closure Complex



**EGIS**  
U.S. ARMY CORPS OF ENGINEERS  
NEW ORLEANS DISTRICT

2014 Addendum to LPV-WBV  
1% Exceedance 2007-2057 Design

**SECTION NAME**

- WB90-CS
- WB90-FW1
- WB90-FW2
- WB90-FW3
- WB90-G1
- WB90-G2
- WB90-L1
- WB90-L2
- WB90-P

**STRUCTURE TYPE**

- Lock
- NOPumpStation
- Interim Control Structure
- Federal Water Control Structure
- Sector Gate
- Channel Floodgate
- Weir
- Control Structure
- Diversion Structure
- Drainage\_Structure
- Navigable Structure
- Channel Floodgate
- Critter Crossing
- Industrial Floodgate
- Pedestrian Floodgate
- Railroad Floodgate
- Road Floodgate
- Phase 2 WBV Contracts
- LEVEE CENTERLINE
- Parishes

**Hydraulic Reach**  
Hydraulic Elevations 2007/2057  
Structural Superiority NA/2057

Levee sections have hydraulic elevation for both existing (2007) and future (2057) conditions in red font. Hard structures are designed and built for future conditions only. They have 2057 hydraulic elevation in red font. If structural superiority has been added, the label includes 2057 design elevation in green font below the hydraulic elevation.

Last Modified : Date: 7/17/2014



IMAGERY  
Projected coordinate system name:  
NAD\_1983\_UTM\_Zone\_15N  
Geographic coordinate system name:  
GCS\_North\_American\_1983  
Resolution: 1.000000

# WBV-MRL Co-Located Engineered Alternative Measures



U.S. ARMY CORPS OF ENGINEERS  
NEW ORLEANS DISTRICT

**Legend**

**MRL 1% Hurricane**

**Hydraulic Design Reaches**

- 70W-L
- 71W-L
- 72W-L
- 73W-L
- 74W-L
- 75W-L
- 76W-L
- 77W-L
- 78W-L
- 79W-L
- 80W-L
- 81W-L
- 82W-L
- 83W-L
- 84W-L
- 85W-L

**STRUCTURE TYPE**

- Lock
- NO Pump Station
- Interim Control Structure
- Federal Water Control Structure
- Sector Gate
- Channel Floodgate
- Weir
- Control Structure
- Diversion Structure
- Drainage Structure
- Navigable Structure
- Channel Floodgate
- Critter Crossing
- Industrial Floodgate
- Pedestrian Floodgate
- Railroad Floodgate
- Road Floodgate

MRL Co-Located Projects (Phase 1)

LEVEE CENTERLINE

Parishes

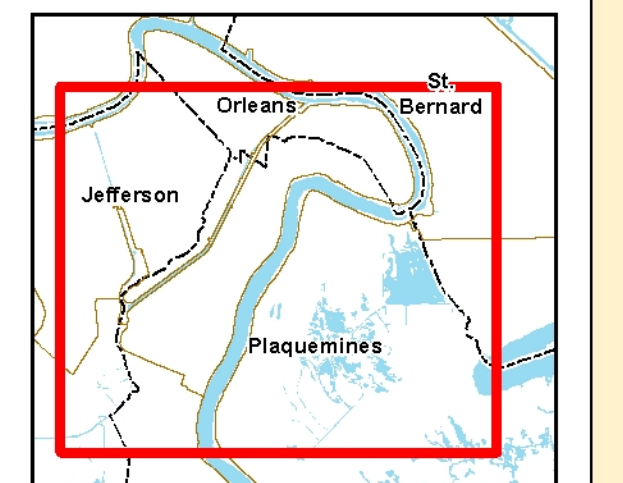
**Hydraulic Reach**

Hydraulic Elevations 2007/2057

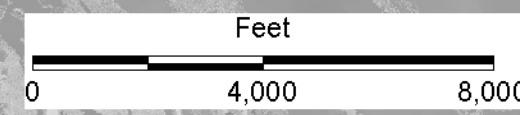
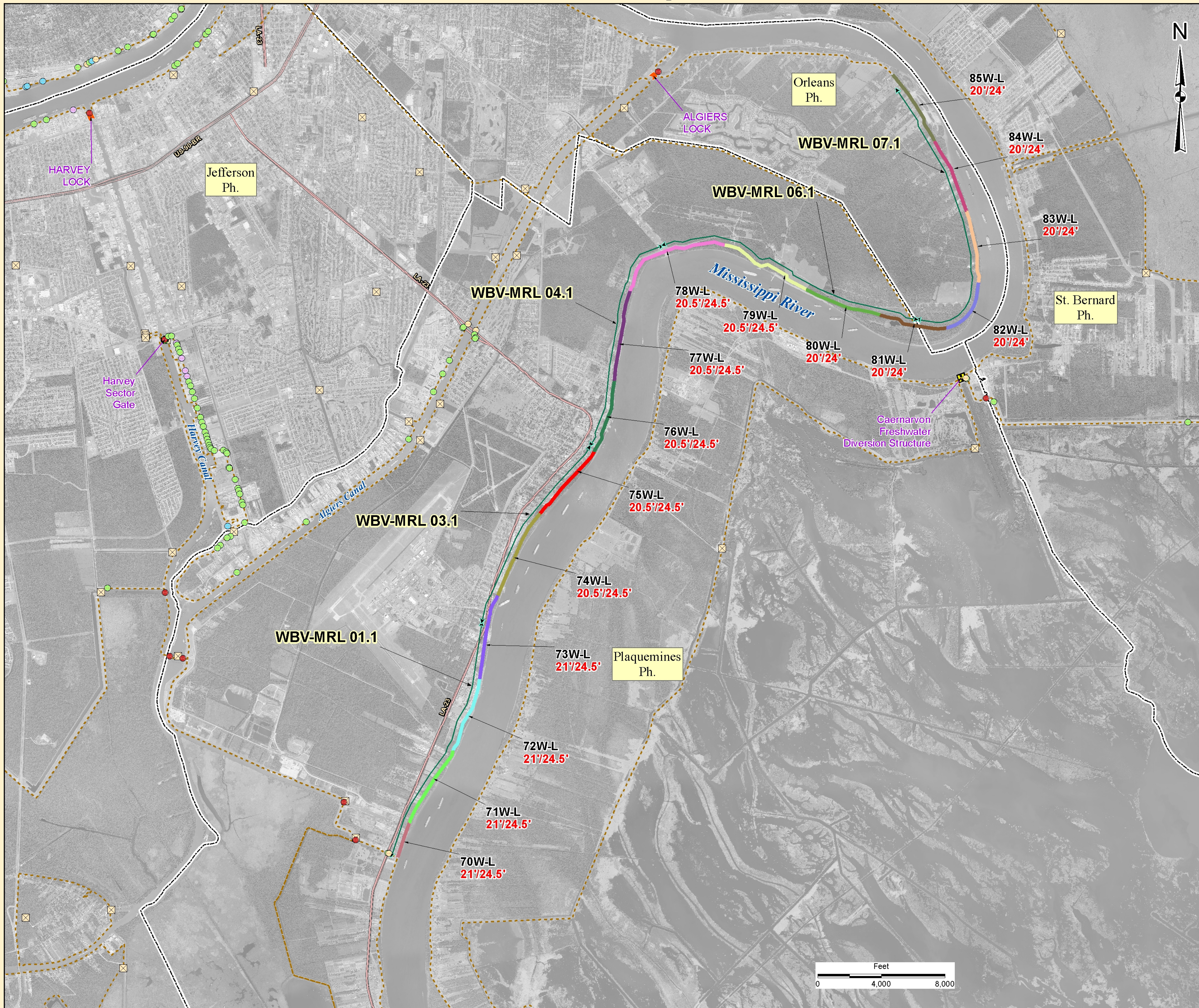
Structural Superiority NA/2057

Levee sections have hydraulic elevation for both existing (2007) and future (2057) conditions in red font. Hard structures are designed and built for future conditions only. They have 2057 hydraulic elevation in red font. If structural superiority has been added, the label includes 2057 design elevation in green font below the hydraulic elevation.

Last Modified : Date: 7/18/2014



IMAGERY  
Projected coordinate system name:  
NAD\_1983\_UTM\_Zone\_15N  
Geographic coordinate system name:  
GCS\_North\_American\_1983  
Resolution: 1.000000



# WBV-MRL Co-Located Resilient Features



2014 Addendum to MRL-HSDRRS 1%

Exceedance hydraulic design

SECTION NAME

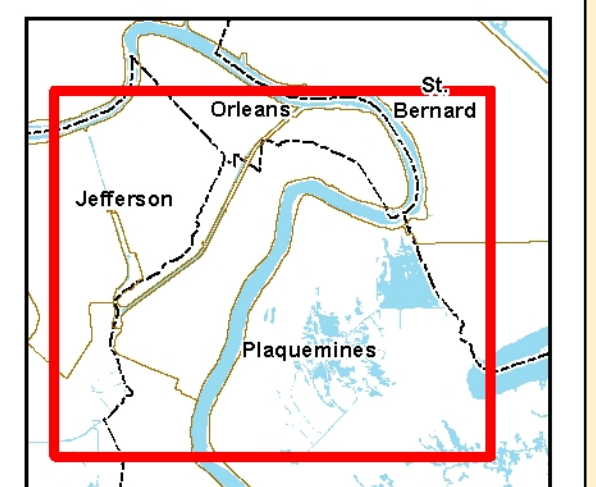
- 70W-LF
- 71W-L
- 71W-LF
- 72W-L
- 72W-LF
- 73W-L
- 73W-LF
- 74W-L
- 74W-LF
- 75W-L
- 75W-LF
- 76W-LF
- 77W-L
- 77W-LF
- 78W-L
- 79W-L
- 80W-L
- 81W-L
- 82W-L
- 83W-L
- 84W-L
- 85W-L

STRUCTURE TYPE

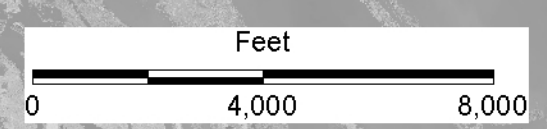
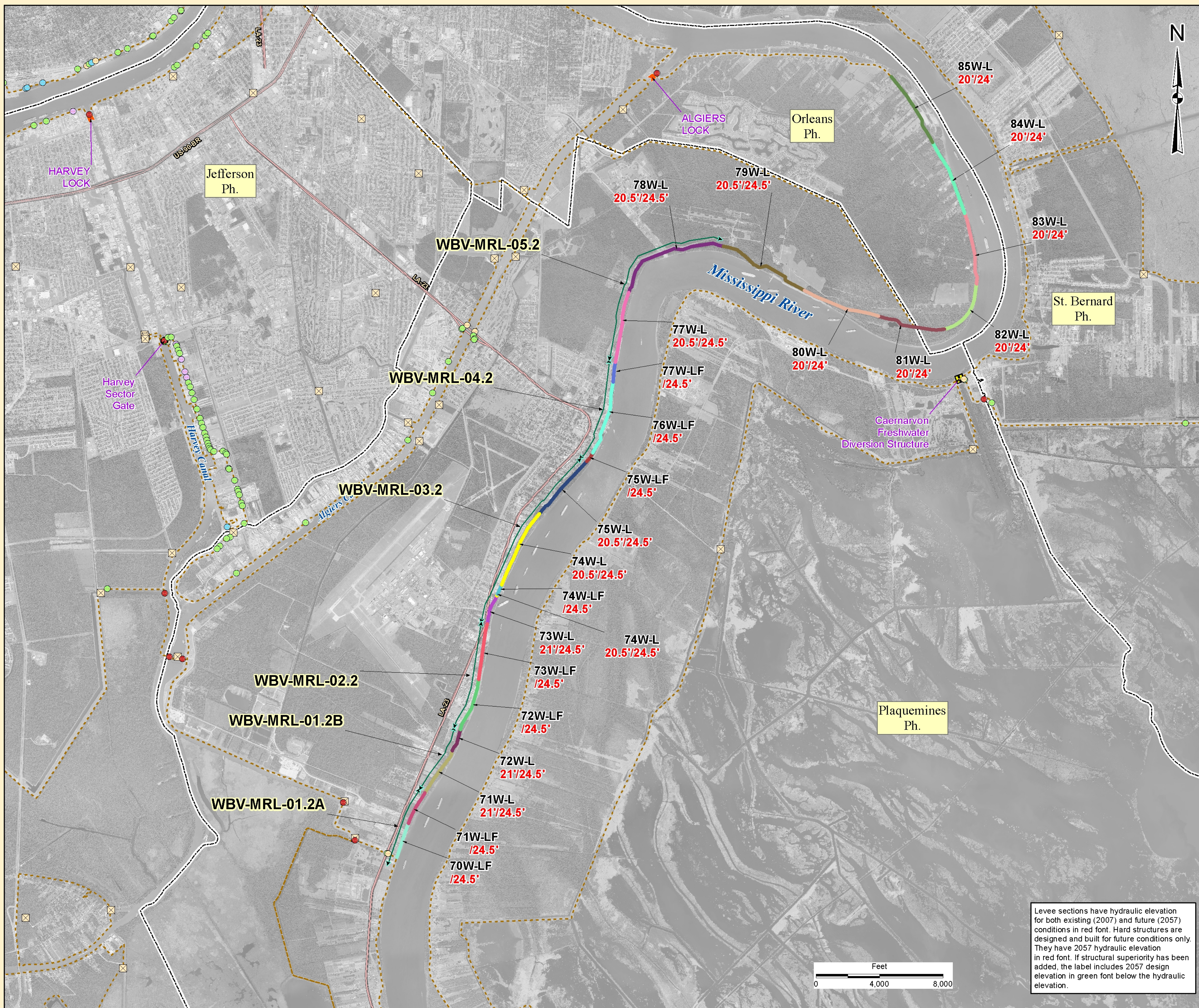
- Lock
- NOPumpStation
- Interim Control Structure
- Federal Water Control Structure
- Sector Gate
- Channel Floodgate
- Weir
- Control Structure
- Diversion Structure
- Drainage\_Structure
- Navigable Structure
- Channel Floodgate
- Critter Crossing
- Industrial Floodgate
- Pedestrian Floodgate
- Railroad Floodgate
- Road Floodgate
- MRL Co-Located Projects (Phase 2)
- LEVEE CENTERLINE
- Parishes

Hydraulic Reach  
Hydraulic Elevations 2007/2057  
Structural Superiority NA/2057

Last Modified : Date: 8/22/2014



IMAGERY  
Projected coordinate system name:  
NAD\_1983\_UTM\_Zone\_15N  
Geographic coordinate system name:  
GCS\_North\_American\_1983  
Resolution: 1.000000



Levee sections have hydraulic elevation for both existing (2007) and future (2057) conditions in red font. Hard structures are designed and built for future conditions only. They have 2057 hydraulic elevation in red font. If structural superiority has been added, the label includes 2057 design elevation in green font below the hydraulic elevation.



# NOV Project Alignments

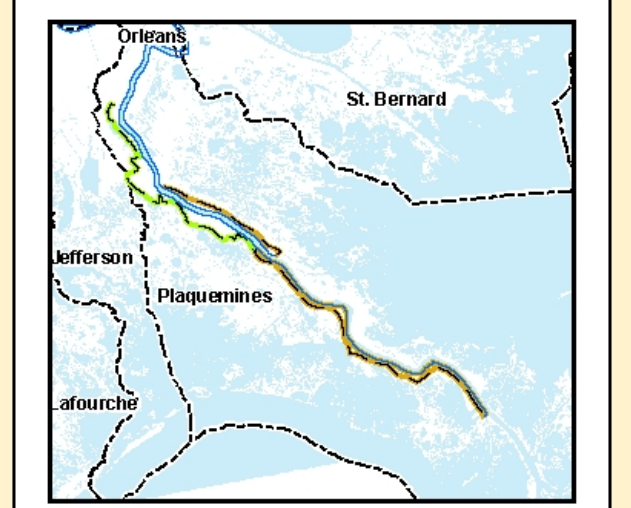


- Legend**
- STRUCTURE TYPE**
- Lock
  - NOPumpStation
  - Interim Control Structure
  - Federal Water Control Structure
  - Sector Gate
  - Channel Floodgate
  - Weir
  - Control Structure
  - Diversion Structure
  - Drainage Structure
  - Navigable Structure
- NOV Project Alignments**
- New Orleans to Venice
  - NOV, Incorporation of Non-Federal Levees
  - LEVEE CENTERLINES
  - Parishes

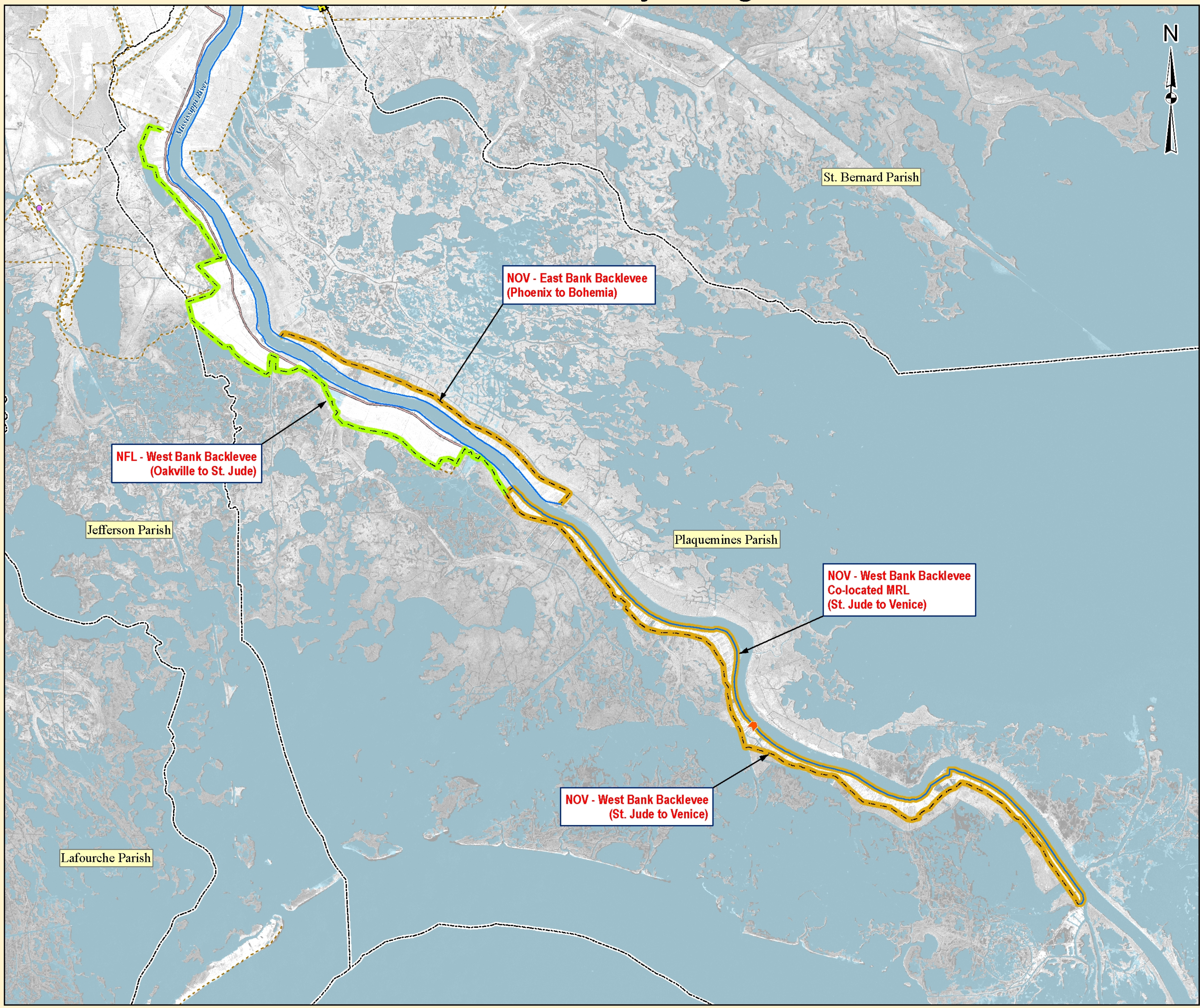
- NOV Hydraulic Reach**  
 Hydraulic Elevations 2013/2063  
 Structural Superiority NA/2063
- NOV-NF Hydraulic Reach**  
 Hydraulic Elevations 2013/2063  
 Structural Superiority NA/2063

Levee sections have hydraulic elevation for both existing (LPV/WBV 2007) and future (2057) conditions in red font. Hard structures are designed and built for future conditions only. They have 2057 hydraulic elevation in red font. If structural superiority has been added, the label includes 2057 design elevation in green font below the hydraulic elevation.

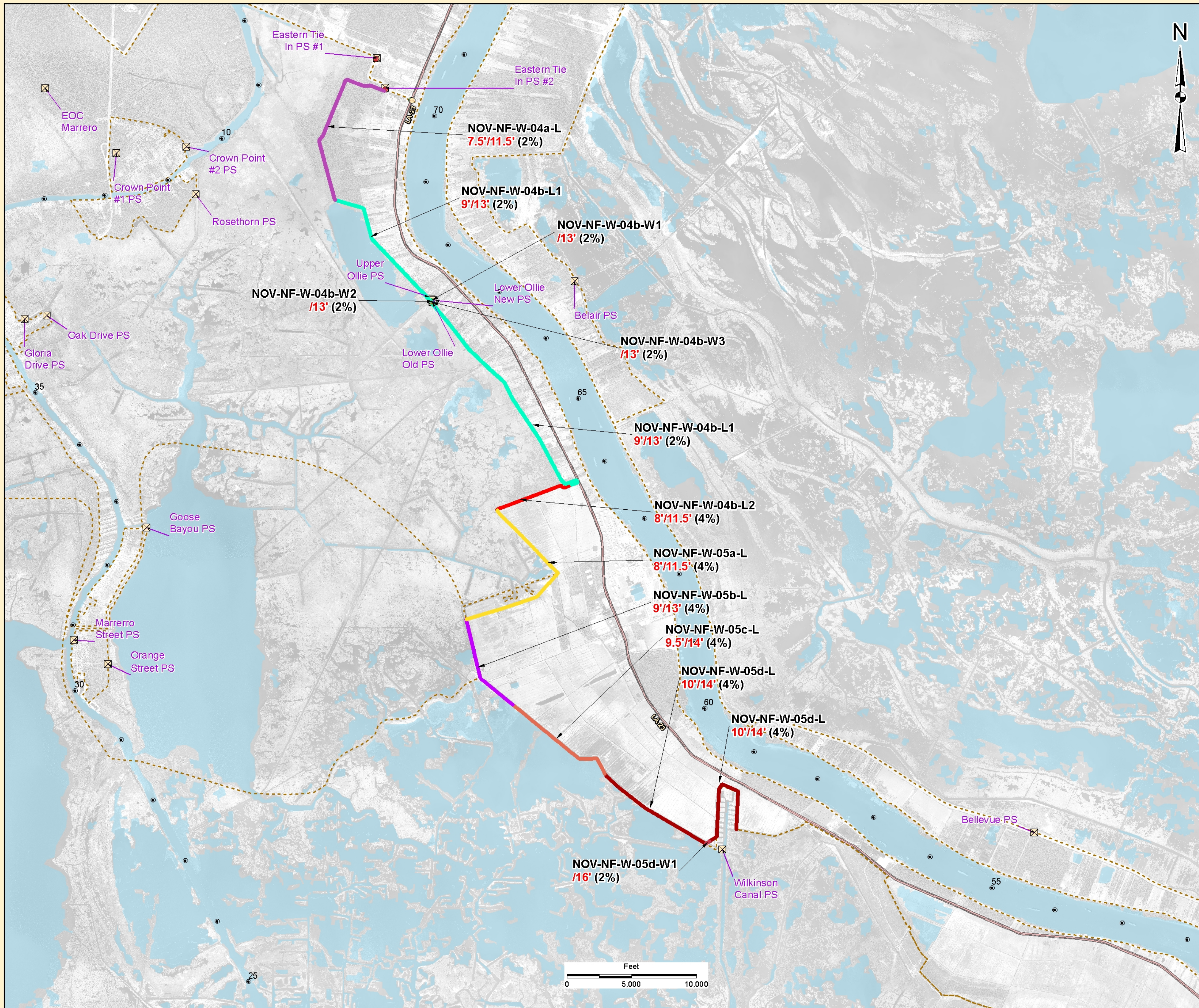
Last Modified : Date: 12/23/2014



**IMAGERY**  
 Projected coordinate system name:  
 NAD\_1983\_UTM\_Zone\_15N  
 Geographic coordinate system name:  
 GCS\_North\_American\_1983  
 Resolution: 1.000000



# NFL West Bank Backlevee - Oakville to St. Jude (1 of 2)



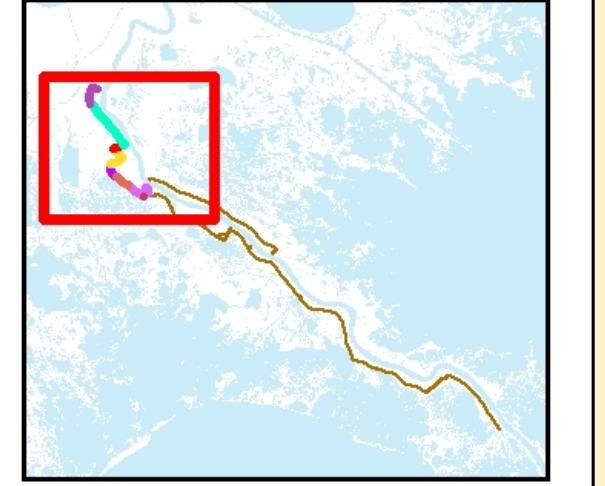
- Legend**
- NOV-NF-W 2% Hurricane Design Grades**
- NOV-NF-W-04a-L
  - NOV-NF-W-04b-L1
  - NOV-NF-W-04b-W1
  - NOV-NF-W-04b-W2
  - NOV-NF-W-04b-W3
  - NOV-NF-W-05d-W1
- NOV-NF-W 4% Hurricane Design Grades**
- NOV-NF-W-04b-L2
  - NOV-NF-W-05a-L
  - NOV-NF-W-05b-L
  - NOV-NF-W-05c-L
  - NOV-NF-W-05d-L
- STRUCTURE TYPE**
- Lock
  - NOPumpStation
  - Interim Control Structure
  - Federal Water Control Structure
  - Sector Gate
  - Channel Floodgate
  - Weir
  - Control Structure
  - Diversion Structure
  - Drainage Structure
  - Navigable Structure
  - Channel Floodgate
  - Critter Crossing
  - Industrial Floodgate
  - Pedestrian Floodgate
  - Railroad Floodgate
  - Road Floodgate
- LEVEE CENTERLINE**
- Parishes
  - River Miles

NOV 2% Exceedance Design for all Structures.  
 NOV-NF-W 4% Exceedance for NOV-NF-W-04b-L2, NOV-NF-W-05 and 06.

**Hydraulic Reach**  
 Hydraulic Elevations 2013/2063  
 Structural Superiority NA/2063

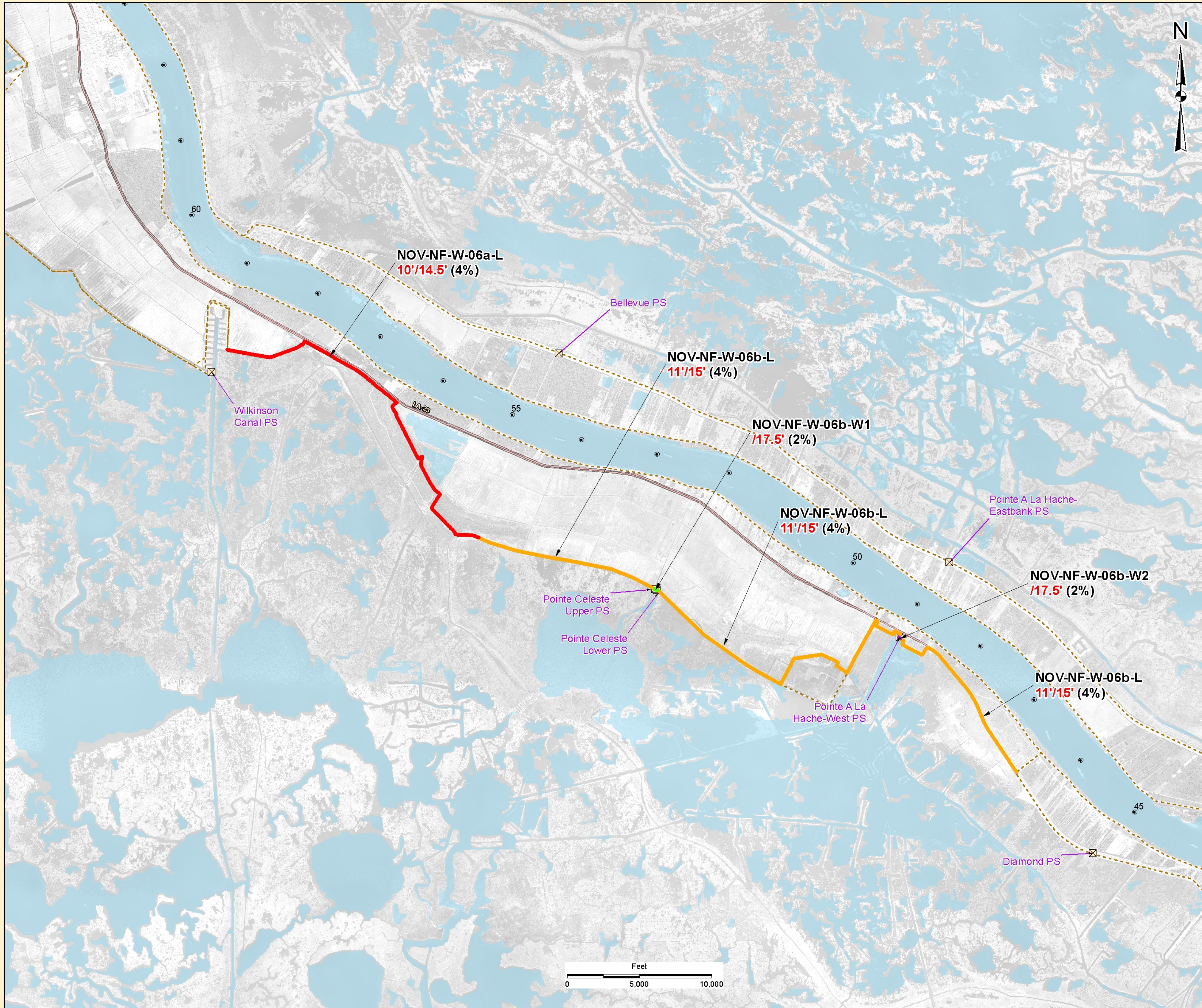
Levee sections have hydraulic elevation for both existing (2013) and future (2063) conditions in red font. Hard structures are designed and built for future conditions only. They have 2063 hydraulic elevation in red font. If structural superiority has been added, the label includes 2063 design elevation in green font below the hydraulic elevation.

Last Modified : Date: 12/22/2014



IMAGERY  
 Projected coordinate system name:  
 NAD\_1983\_UTM\_Zone\_15N  
 Geographic coordinate system name:  
 GCS\_North\_American\_1983  
 Resolution: 1.000000

# NFL West Bank Backlevee - Oakville to St. Jude (2 of 2)



- Legend**
- NOV-NF-W 2% Hurricane Design Grades  
 SECTION\_NAME  
 NOV-NF-W-06b-W1  
 NOV-NF-W-06b-W2
- NOV-NF-W 4% Hurricane Design Grades  
 SECTION\_NAME  
 NOV-NF-W-06a-L  
 NOV-NF-W-06b-L
- STRUCTURE TYPE
- Lock
  - NOPumpStation
  - Interim Control Structure
  - Federal Water Control Structure
  - Sector Gate
  - Channel Floodgate
  - Weir
  - Control Structure
  - Diversion Structure
  - Drainage\_Structure
  - Navigable Structure
  - Channel Floodgate
  - Critter Crossing
  - Industrial Floodgate
  - Pedestrian Floodgate
  - Railroad Floodgate
  - Road Floodgate
  - LEVEE CENTERLINE
  - Parishes
  - River Miles

NOV 2% Exceedance Design for all Structures.  
 NOV-NF-W 4% Exceedance for NOV-NF-W-05 and 06.

**Hydraulic Reach**  
 Hydraulic Elevations 2013/2063  
 Structural Superiority NA/2063

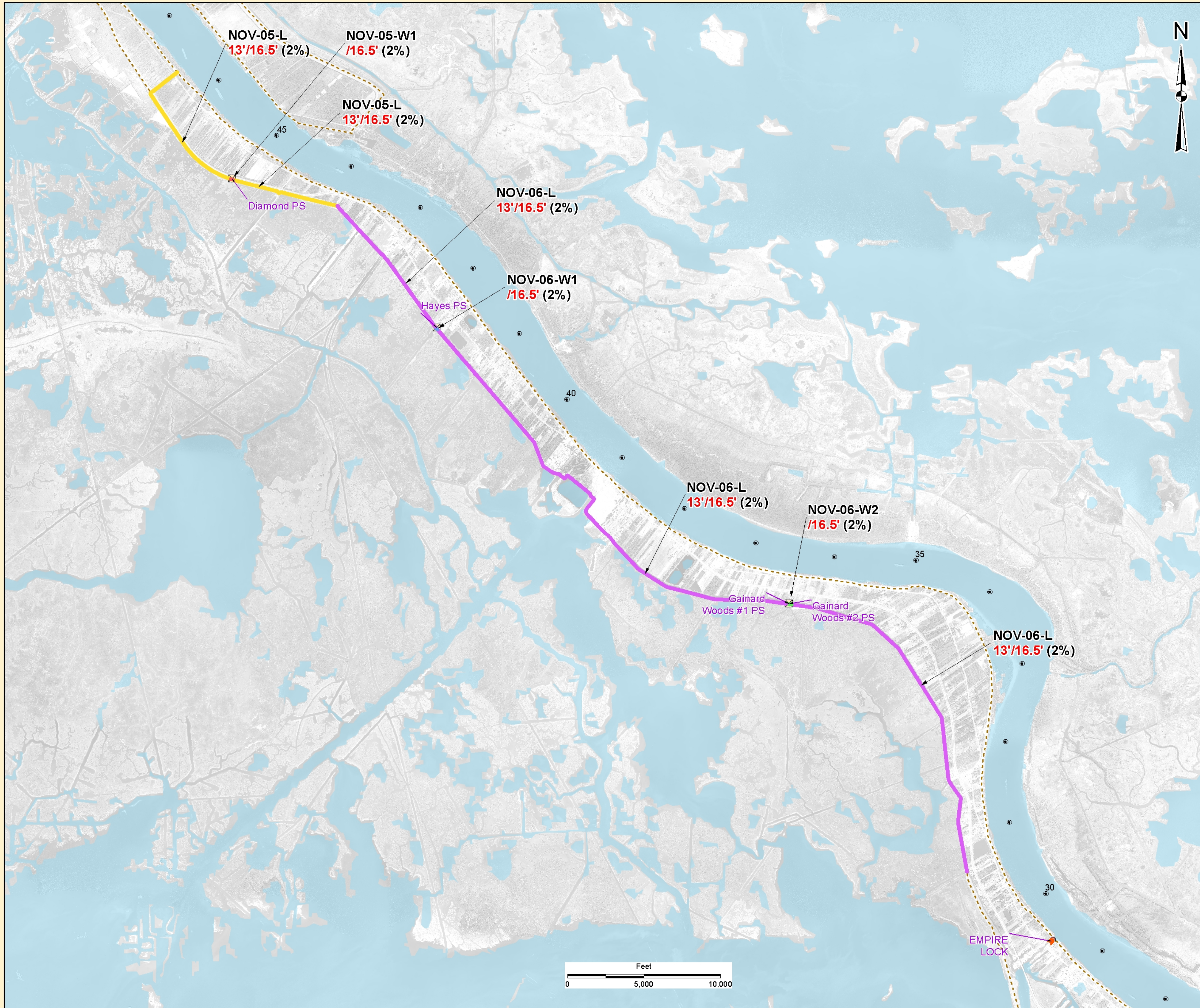
Levee sections have hydraulic elevation for both existing (2013) and future (2063) conditions in red font. Hard structures are designed and built for future conditions only. They have 2063 hydraulic elevation in red font. If structural superiority has been added, the label includes 2063 design elevation in green font below the hydraulic elevation.

Last Modified : Date: 12/22/2014



IMAGERY  
 Projected coordinate system name:  
 NAD\_1983\_UTM\_Zone\_15N  
 Geographic coordinate system name:  
 GCS\_North\_American\_1983  
 Resolution: 1.000000

# NOV West Bank Backlevee - St. Jude to Venice (1 of 2)



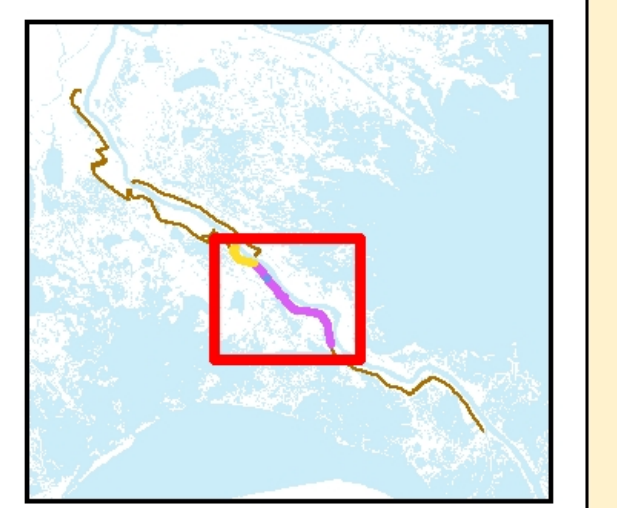
- Legend**
- NOV 2% Hurricane Design Grades**
- NOV-05-L
  - NOV-05-W1
  - NOV-06-L
  - NOV-06-W1
  - NOV-06-W2
- STRUCTURE TYPE**
- Lock
  - NOPumpStation
  - Interim Control Structure
  - Federal Water Control Structure
  - Sector Gate
  - Channel Floodgate
  - Weir
  - Control Structure
  - Diversion Structure
  - Drainage\_Structure
  - Navigable\_Structure
  - Channel Floodgate
  - Critter Crossing
  - Industrial Floodgate
  - Pedestrian Floodgate
  - Railroad Floodgate
  - Road Floodgate
  - LEVEE CENTERLINE
  - Parishes
  - River Miles

**NOV 2% Exceedance Design**

**Hydraulic Reach**  
 Hydraulic Elevations 2013/2063  
 Structural Superiority NA/2063

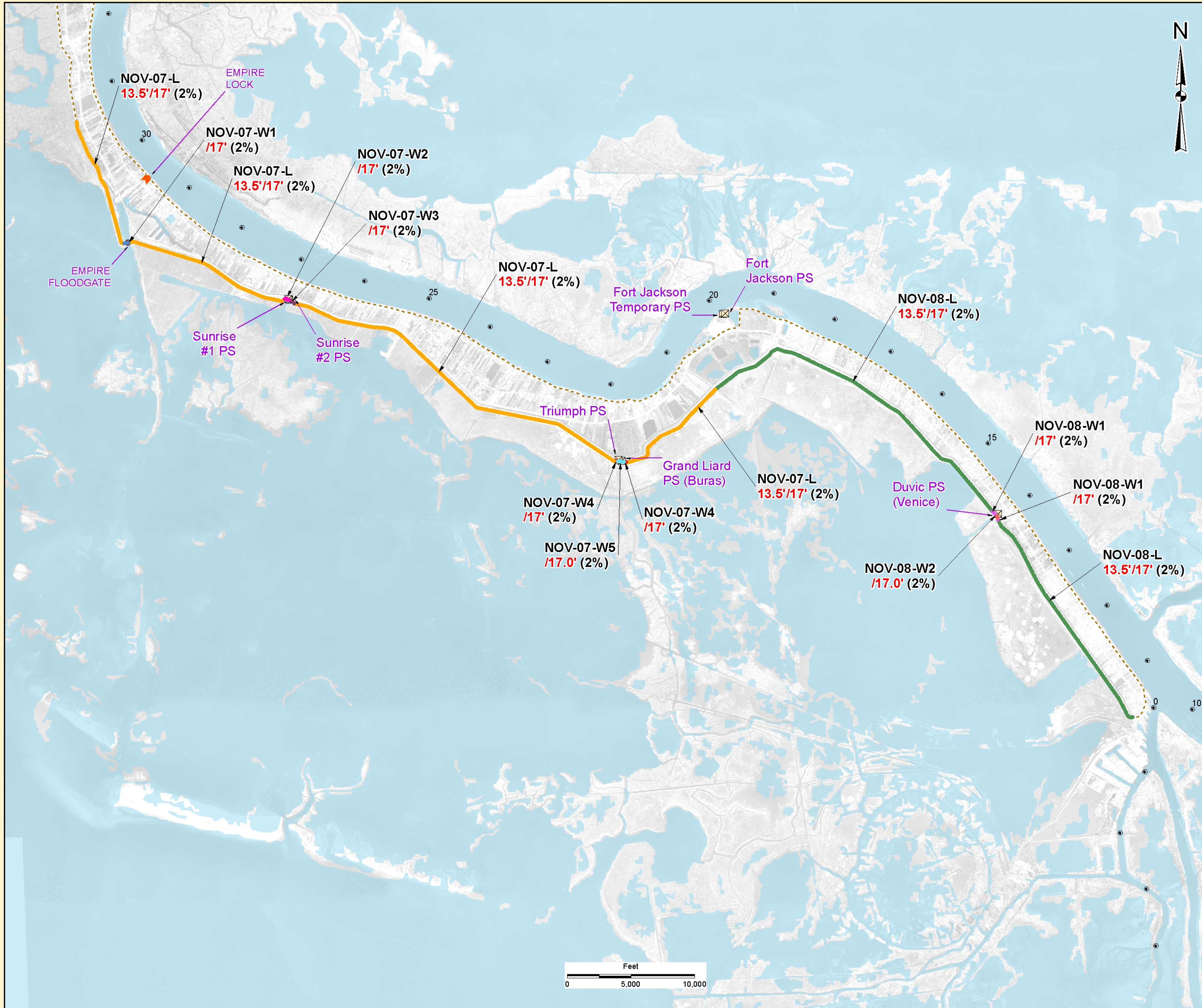
Levee sections have hydraulic elevation for both existing (2013) and future (2063) conditions in red font. Hard structures are designed and built for future conditions only. They have 2063 hydraulic elevation in red font. If structural superiority has been added, the label includes 2063 design elevation in green font below the hydraulic elevation.

Last Modified : Date: 12/22/2014



IMAGERY  
 Projected coordinate system name:  
 NAD\_1983\_UTM\_Zone\_15N  
 Geographic coordinate system name:  
 GCS\_North\_American\_1983  
 Resolution: 1.000000

# NOV West Bank Backlevee - St. Jude to Venice (2 of 2)



**Legend**

**NOV 2% Hurricane Design Grades**

- NOV-07-L
- NOV-07-W1
- NOV-07-W2
- NOV-07-W3
- NOV-07-W4
- NOV-07-W5
- NOV-08-L
- NOV-08-W1
- NOV-08-W2

**STRUCTURE TYPE**

- Lock
- NOPumpStation
- Interim Control Structure
- Federal Water Control Structure
- Sector Gate
- Channel Floodgate
- Weir
- Control Structure
- Diversion Structure
- Drainage Structure
- Navigable Structure
- Channel Floodgate
- Critter Crossing
- Industrial Floodgate
- Pedestrian Floodgate
- Railroad Floodgate
- Road Floodgate

**LEVEE CENTERLINE**

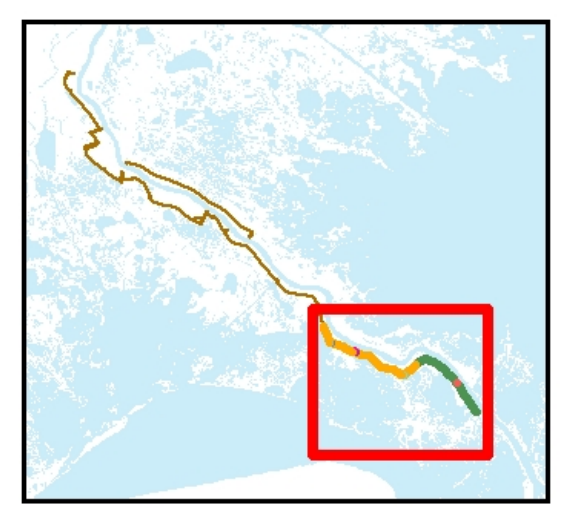
- Parishes
- River Miles

**NOV 2% Exceedance Design**

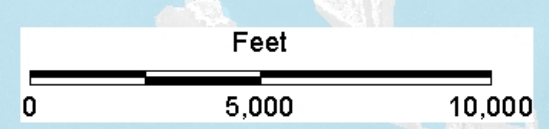
**Hydraulic Reach**  
 Hydraulic Elevations 2013/2063  
 Structural Superiority NA/2063

Levee sections have hydraulic elevation for both existing (2013) and future (2063) conditions in red font. Hard structures are designed and built for future conditions only. They have 2063 hydraulic elevation in red font. If structural superiority has been added, the label includes 2063 design elevation in green font below the hydraulic elevation.

Last Modified : Date: 12/22/2014



**IMAGERY**  
 Projected coordinate system name:  
 NAD\_1983\_UTM\_Zone\_15N  
 Geographic coordinate system name:  
 GCS\_North\_American\_1983  
 Resolution: 1.000000



# NOV East Bank Backlevee - Phoenix to Bohemia



- Legend**
- NOV 2% Hurricane Design Grades**
- NOV-01a-L
  - NOV-01a-W1
  - NOV-01b-L
  - NOV-01b-W1
- STRUCTURE TYPE**
- Lock
  - NOPumpStation
  - Interim Control Structure
  - Federal Water Control Structure
  - Sector Gate
  - Channel Floodgate
  - Weir
  - Control Structure
  - Diversion Structure
  - Drainage\_Structure
  - Navigable Structure
  - Channel Floodgate
  - Critter Crossing
  - Industrial Floodgate
  - Pedestrian Floodgate
  - Railroad Floodgate
  - Road Floodgate
- LEVEE CENTERLINE**
- Parishes
  - River Miles

**NOV 2% Exceedance Design**

- Hydraulic Reach
- Hydraulic Elevations 2013/2063
- Structural Superiority NA/2063

Levee sections have hydraulic elevation for both existing (2013) and future (2063) conditions in red font. Hard structures are designed and built for future conditions only. They have 2063 hydraulic elevation in red font. If structural superiority has been added, the label includes 2063 design elevation in green font below the hydraulic elevation.

Last Modified : Date: 12/22/2014



IMAGERY  
 Projected coordinate system name:  
 NAD\_1983\_UTM\_Zone\_15N  
 Geographic coordinate system name:  
 GCS\_North\_American\_1983  
 Resolution: 1.000000

