



**US Army Corps
of Engineers®**

MICHAEL J. KIRWAN
1965

MICHAEL J. KIRWAN DAM & RESERVOIR

PITTSBURGH DISTRICT



BUILDING STRONG®

Michael J. Kirwan Dam & Reservoir

authorized by the Flood Control Act of 1958, is one of 16 flood damage reduction projects in the Pittsburgh District. The reservoir provides flood damage reduction for the Mahoning River Valley and the Beaver and upper Ohio Rivers.

Since its completion in 1965, the Kirwan Reservoir is estimated to have prevented hundreds of millions of dollars in flood damage. The reservoir has the capability to store the equivalent run-off of 18.35 inches of precipitation from its 80.5 square mile watershed. When compared, the \$20-million construction cost is outweighed by the reservoir's flood damage reduction benefits.

The reservoir also stores water for release downstream during dry periods. This has the effect of improving both the quality and quantity of flow in the Mahoning River for domestic and industrial use, recreation, esthetics, and aquatic life.

Recreation

Surrounded by the lush, green farmland of Northern Ohio, Michael J. Kirwan Dam & Reservoir provides miles of clean waters and scenic countryside for your enjoyment. The U.S. Army Corps of Engineers invites you to visit the lake and experience the outdoor opportunities that await you. The reservoir and the majority of its surrounding lands are leased by the Corps of Engineers to the Ohio Department of Natural Resources as West Branch State Park.



Visitors to the park will find numerous, well-maintained facilities available for fishing, hiking, picnicking, camping, boating, and other year-round outdoor activities.

Visitors of all ages are invited to explore the rich history and fascinating features of the Visitor Center located on Wayland Road. A series of programs are offered, in conjunction with the Ohio Department of Natural Resources, highlighting the natural, cultural and historical significance of the reservoir and its surrounding area. You may also experience our unique wildlife platform, where

you can see the flora and fauna of the area and maybe even catch a glimpse of wild turkeys.

Fishing at Michael J. Kirwan can be a rewarding activity. The numerous deep feeder channels and shallow shoreline provide habitat for a variety of fish species including walleye, muskie, striped bass, large/smallmouth bass, crappie, and bluegills.

Hiking enthusiasts can spend their time on fourteen miles of trails. The state maintains several hiking trails adjacent to the camping area and an eight-mile loop of the Buckeye Trail that traverses the western end of the lake. In addition there are several miles of mountain biking, snow-mobile, cross-country skiing, and bridal trails available. Also available is a horse camp area open by permit only.

If you're out for an afternoon drive sightseeing, consider stopping at one of our picnic areas at the reservoir. They are conveniently located and are provided with tables, shelters and grills for your enjoyment.



Ideally situated at the end of a long wooded peninsula, the campground features campsites suitable for either trailer or tent camping. Each

campsite is equipped with a picnic table, fire ring and electrical hookups. Many sites are accessible to those with disabilities. Campers will find restrooms, shower houses and water stations conveniently located throughout the campground. A camper's boat launch ramp is available within the campground while some lakeside sites offer boating access.

The modern marina located on the south shore offers marine supplies, docking facilities and boat rentals. There are also three concrete launching ramps maintained on the reservoir and the Fisherman's Parking Area, located on the north shore adjacent to the causeway.

Come and relax on the state park's 700-foot beach that provides a view of the Kirwan Dam from your lounge chair and enjoy the breathtaking sunsets. Always remember to watch your children near the water. The swim beach does not provide lifeguards.

Michael J. Kirwan Dam & Reservoir
P.O. Box 58, 8657 Kestrel Way
Wayland, OH 44285-0058
(330) 358-2622
Daily Lake & Recreation Information:
(330) 358-2247

www.lrp.usace.army.mil/rec/rec.htm

Ohio Department of Natural Resources
West Branch State Park
5708 Esworthy Road
Ravenna, OH 44266-9659
(330) 296-3239

www.ohiostateparks.org

Campground Reservation: 1-866-644-6727

Lake and Dam Statistics

Location: On the West Branch of the Mahoning River, about 10.6 miles above the junction of the branch and the Mahoning River at Newton Falls, Ohio. The reservoir is located entirely in Portage County, Ohio.

Total area: 6,332 acres
Drainage area above dam: 80.5 sq. mi.
Construction costs: \$20,000,000

Dam

Type structure: rolled earth filled embankment
Volume of earth and rock: . . . 3,200,000 cu. yd.
Maximum height above streambed: . . . 83 ft.
Total length 9,900 ft.
Maximum width at base: 800 ft.
Outlet works: Intake tower containing
Three 2' x 3' gates
Three 5' x 8' barrel conduits

Lake

Length at summer pool: 10 mi.
Maximum pool area: 3,240 acres
Summer pool area: 2,650 acres
Elevation above sea level:
Maximum pool: 993 ft.
Summer pool: 985.5 ft.
Streambed at dam: 928 ft.

**Enjoy a safe outing.
Observe these safety tips!**

Water Hazards

Boat with caution! Be especially aware of the existence of underwater obstructions. In addition, floating debris may be at or near the lake surface as a result of fluctuating lake levels. Boaters and skiers should be watchful for these hazards; because of these floating and underwater hazards, diving is discouraged.

Life Jackets

When boating, the best protection against drowning is to wear your life jacket. U.S. Coast Guard approved life jackets are required if you are less than 10 years of age, a non-swimmer, are on a boat less than 16 feet in length, or are in a canoe or kayak. Know the rules before you go out on the water.

Fire Protection

The fire potential is generally high during the recreation season. Help prevent forest fires by obeying the No Open Fire regulation.

Alcohol and Boating Don't Mix

Don't drink while operating a boat. Alcohol is involved in at least 50 percent of all drownings and a major cause of death in recreational boating accidents.

Alcoholic beverages are prohibited on all Corps of Engineers lake lands and waters!

Be alert to changing weather/ lake conditions

Storms can come on very quickly. If lightning is spotted, head for shore immediately and seek out a safe location.

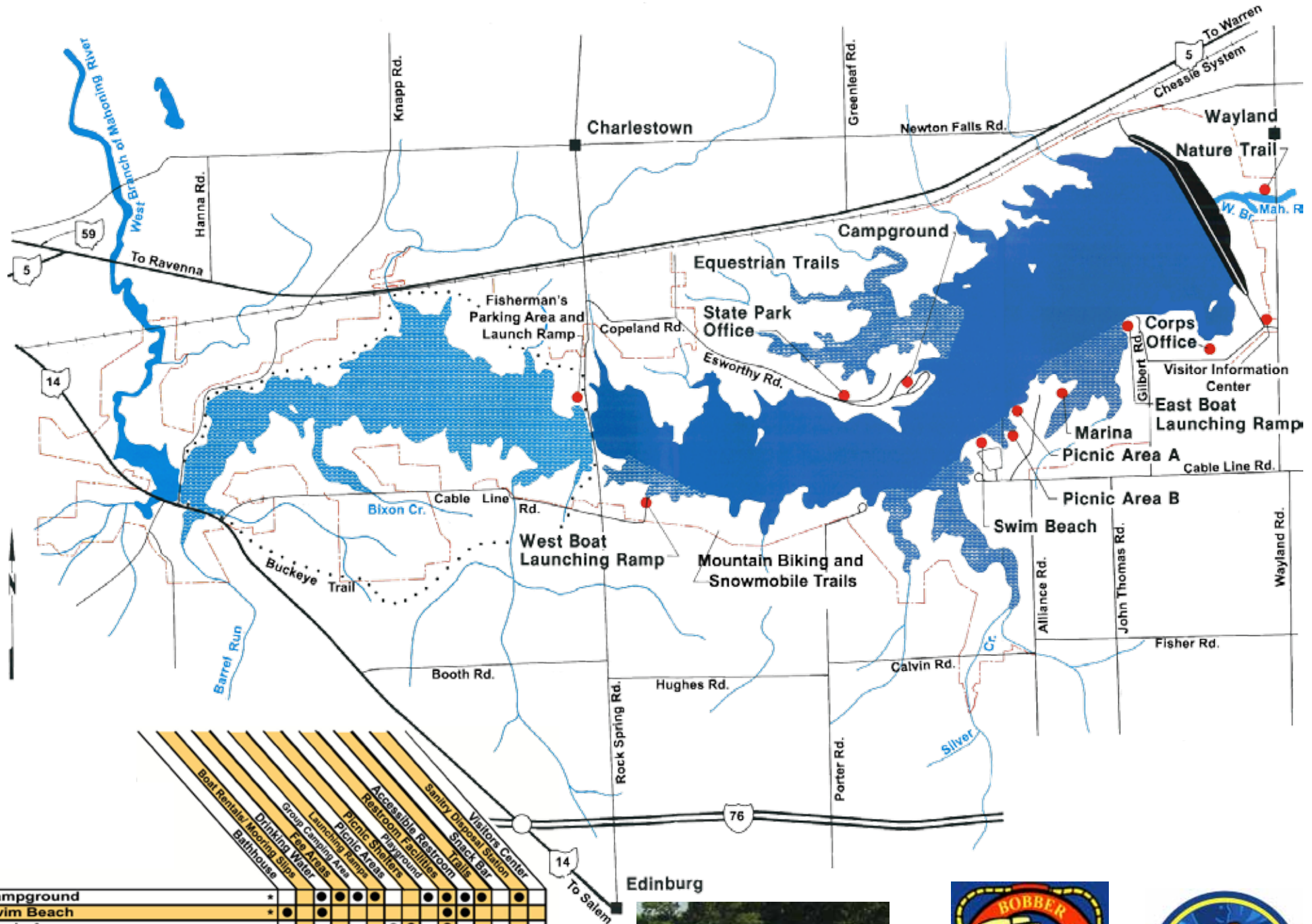
Firearms and ammunition

The US Army Corps of Engineers does not honor State-issued concealed weapon permits, prohibits loaded concealed weapons, the possession of loaded firearms or ammunition on lands and waters administered by the US Army Corps of Engineers per 36 C.F.R. § 327.13(a).

Anglers

Use a wading stick to check for sudden drop-offs in the water and for extra balance.

Federal rules and regulations concerning the use of this lake are set forth in Title 36, Chapter III, of the Code of Federal Regulations and are on display in public areas of this lake.



	Boat Rentals	Drinking Water	Group Camping Area	Launching Ramps	Picnic Areas	Picnic Shelters	Restroom	Playground	Accessible Restroom	Sanitary Disposal	Visitor Center	Spack Bar	Trails
Campground	*												
Swim Beach	*												
Picnic Areas	*												
East Boat Launching Ramp	*												
West Boat Launching Ramp	*												
Fisherman's Parking Area	*												
Marina	*												
Dam Recreation Area	**												

* Operated by the Ohio Department of Natural Resources
 ** Operated by the Corps of Engineers
 No Horsepower Limit

