

Southwest Coastal NED Plan



400

PROJECT STRUCTURES

- RESIDENTIAL
- NON-RESIDENTIAL
- WAREHOUSE

Structures identified as preliminarily eligible require additional on-site assessment and must meet certain criteria in order to participate in the nonstructural project. More information about the general nonstructural process can be found in Appendix L. Additional details concerning eligibility criteria will be developed during the design and construction phases.



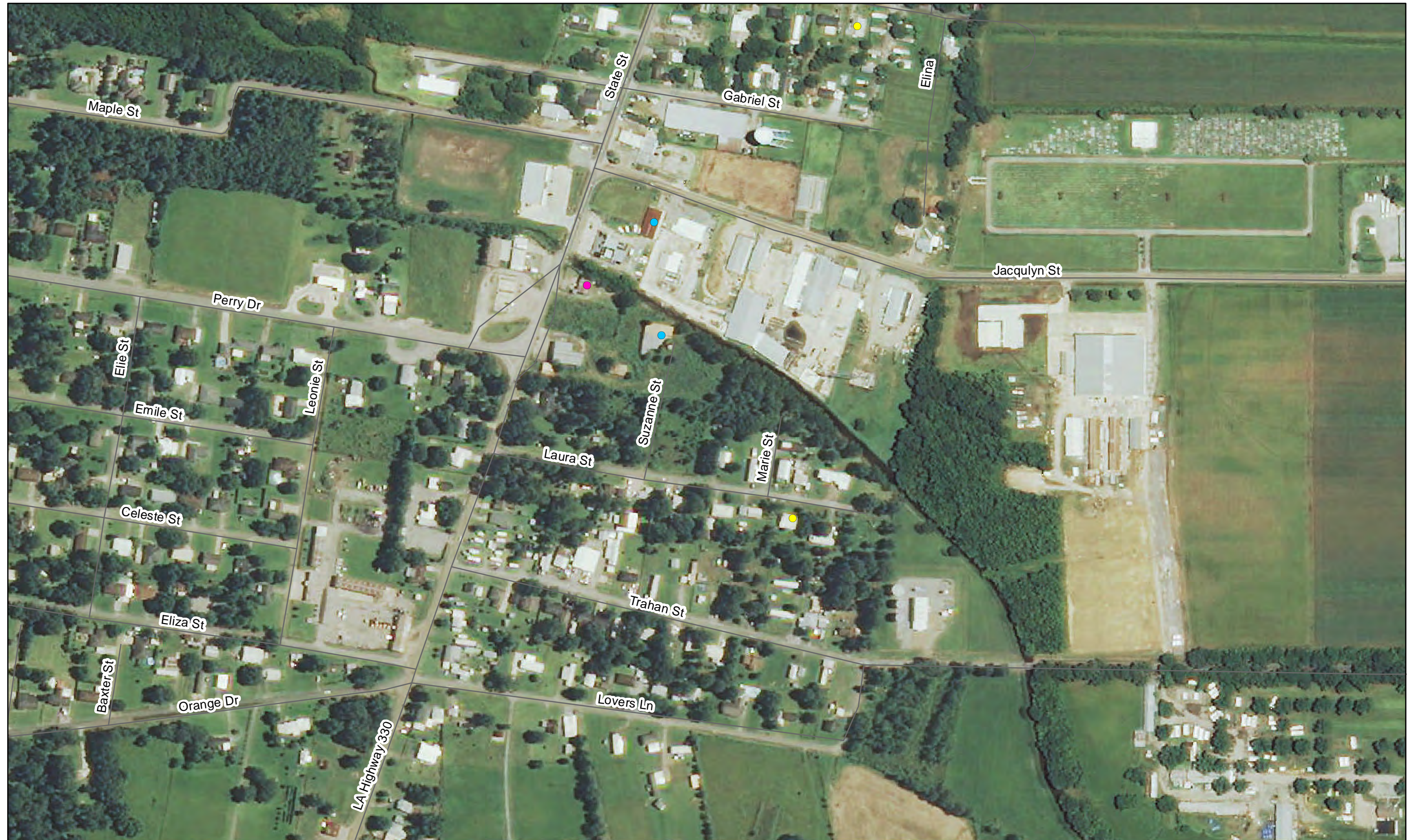
Structure Inventory: Data on study area structures were collected in 2012 via visual assessment.

Imagery: Louisiana NAIP Imagery 2013



Southwest Coastal NED Plan

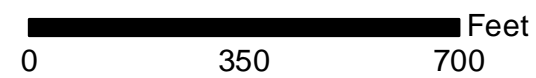
388



PROJECT STRUCTURES

- RESIDENTIAL
- NON-RESIDENTIAL
- WAREHOUSE

Structures identified as preliminarily eligible require additional on-site assessment and must meet certain criteria in order to participate in the nonstructural project. More information about the general nonstructural process can be found in Appendix L. Additional details concerning eligibility criteria will be developed during the design and construction phases.



Structure Inventory: Data on study area structures were collected in 2012 via visual assessment.

Imagery: Louisiana NAIP Imagery 2013



Southwest Coastal NED Plan

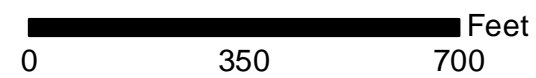
389



PROJECT STRUCTURES

- RESIDENTIAL
- NON-RESIDENTIAL
- WAREHOUSE

Structures identified as preliminarily eligible require additional on-site assessment and must meet certain criteria in order to participate in the nonstructural project. More information about the general nonstructural process can be found in Appendix L. Additional details concerning eligibility criteria will be developed during the design and construction phases.



Structure Inventory: Data on study area structures were collected in 2012 via visual assessment.

Imagery: Louisiana NAIP Imagery 2013



Southwest Coastal NED Plan

390

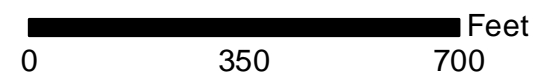


403

PROJECT STRUCTURES

- RESIDENTIAL
- NON-RESIDENTIAL
- WAREHOUSE

Structures identified as preliminarily eligible require additional on-site assessment and must meet certain criteria in order to participate in the nonstructural project. More information about the general nonstructural process can be found in Appendix L. Additional details concerning eligibility criteria will be developed during the design and construction phases.



Structure Inventory: Data on study area structures were collected in 2012 via visual assessment.

Imagery: Louisiana NAIP Imagery 2013



Southwest Coastal NED Plan

393

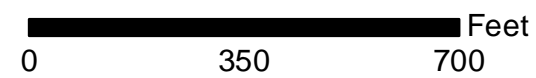


406

PROJECT STRUCTURES

- RESIDENTIAL
- NON-RESIDENTIAL
- WAREHOUSE

Structures identified as preliminarily eligible require additional on-site assessment and must meet certain criteria in order to participate in the nonstructural project. More information about the general nonstructural process can be found in Appendix L. Additional details concerning eligibility criteria will be developed during the design and construction phases.



Structure Inventory: Data on study area structures were collected in 2012 via visual assessment.

Imagery: Louisiana NAIP Imagery 2013



Southwest Coastal NED Plan

394



405

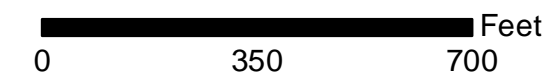
407

417

PROJECT STRUCTURES

- RESIDENTIAL
- NON-RESIDENTIAL
- WAREHOUSE

Structures identified as preliminarily eligible require additional on-site assessment and must meet certain criteria in order to participate in the nonstructural project. More information about the general nonstructural process can be found in Appendix L. Additional details concerning eligibility criteria will be developed during the design and construction phases.



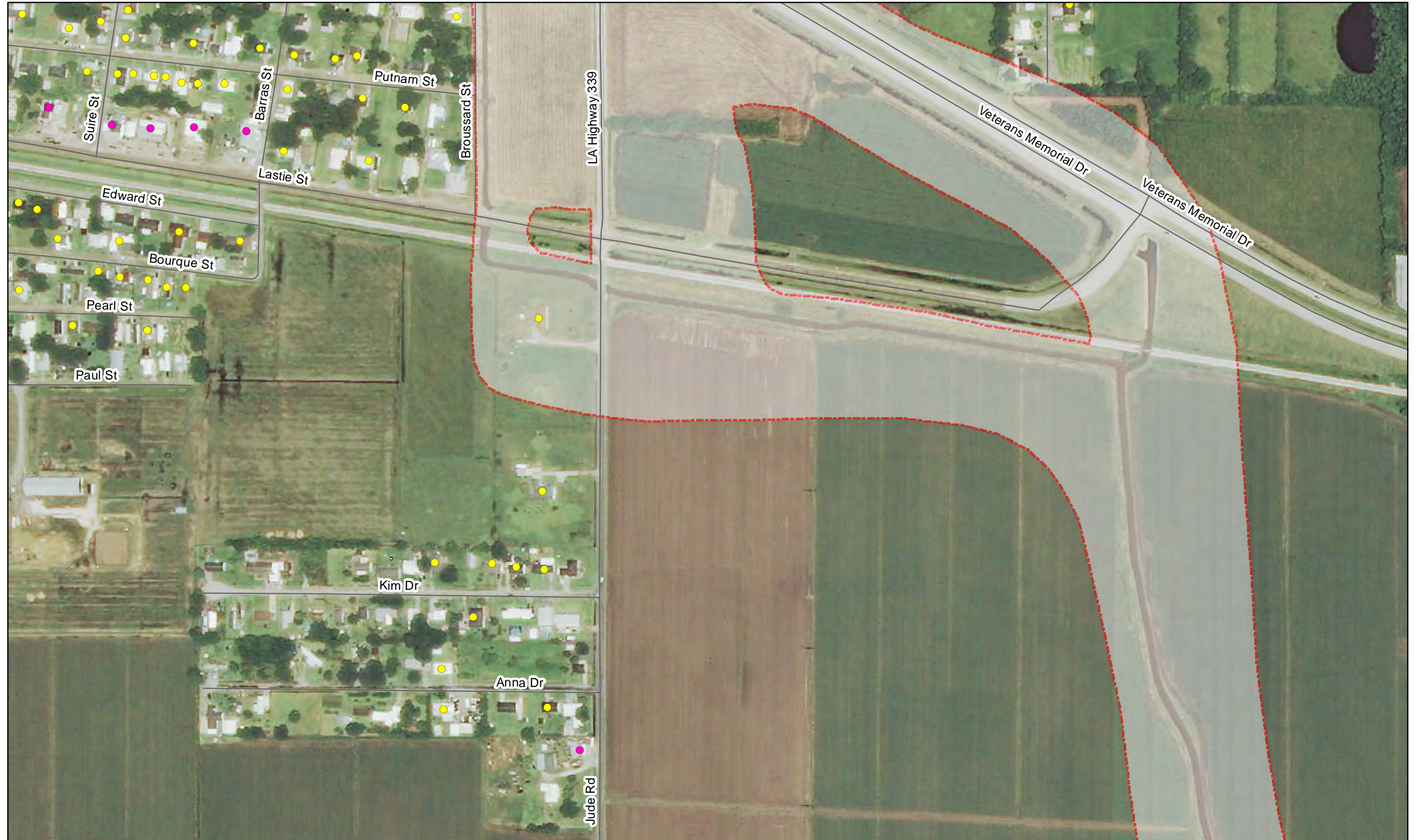
Structure Inventory: Data on study area structures were collected in 2012 via visual assessment.

Imagery: Louisiana NAIP Imagery 2013



Southwest Coastal NED Plan

395



406

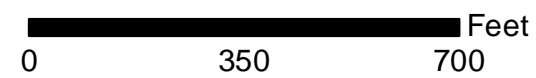
408

PROJECT STRUCTURES

- RESIDENTIAL
- NON-RESIDENTIAL
- WAREHOUSE

Structures identified as preliminarily eligible require additional on-site assessment and must meet certain criteria in order to participate in the nonstructural project. More information about the general nonstructural process can be found in Appendix L. Additional details concerning eligibility criteria will be developed during the design and construction phases.

418



Structure Inventory: Data on study area structures were collected in 2012 via visual assessment.

Imagery: Louisiana NAIP Imagery 2013



Southwest Coastal NED Plan

396



407

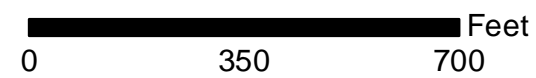
409

419

PROJECT STRUCTURES

- RESIDENTIAL
- NON-RESIDENTIAL
- WAREHOUSE

Structures identified as preliminarily eligible require additional on-site assessment and must meet certain criteria in order to participate in the nonstructural project. More information about the general nonstructural process can be found in Appendix L. Additional details concerning eligibility criteria will be developed during the design and construction phases.



Structure Inventory: Data on study area structures were collected in 2012 via visual assessment.

Imagery: Louisiana NAIP Imagery 2013



Southwest Coastal NED Plan



408

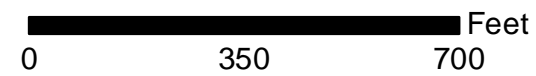
410

420

PROJECT STRUCTURES

- RESIDENTIAL
- NON-RESIDENTIAL
- WAREHOUSE

Structures identified as preliminarily eligible require additional on-site assessment and must meet certain criteria in order to participate in the nonstructural project. More information about the general nonstructural process can be found in Appendix L. Additional details concerning eligibility criteria will be developed during the design and construction phases.



Structure Inventory: Data on study area structures were collected in 2012 via visual assessment.

Imagery: Louisiana NAIP Imagery 2013



Southwest Coastal NED Plan



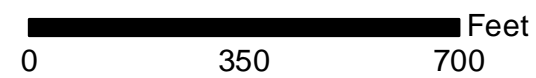
409

421

PROJECT STRUCTURES

- RESIDENTIAL
- NON-RESIDENTIAL
- WAREHOUSE

Structures identified as preliminarily eligible require additional on-site assessment and must meet certain criteria in order to participate in the nonstructural project. More information about the general nonstructural process can be found in Appendix L. Additional details concerning eligibility criteria will be developed during the design and construction phases.



Structure Inventory: Data on study area structures were collected in 2012 via visual assessment.

Imagery: Louisiana NAIP Imagery 2013



Southwest Coastal NED Plan

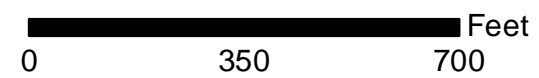


PROJECT STRUCTURES

- RESIDENTIAL
- NON-RESIDENTIAL
- WAREHOUSE

Structures identified as preliminarily eligible require additional on-site assessment and must meet certain criteria in order to participate in the nonstructural project. More information about the general nonstructural process can be found in Appendix L. Additional details concerning eligibility criteria will be developed during the design and construction phases.

424



Structure Inventory: Data on study area structures were collected in 2012 via visual assessment.

Imagery: Louisiana NAIP Imagery 2013



Southwest Coastal NED Plan

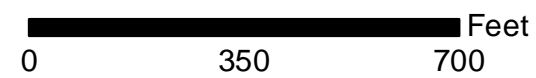
397



PROJECT STRUCTURES

- RESIDENTIAL
- NON-RESIDENTIAL
- WAREHOUSE

Structures identified as preliminarily eligible require additional on-site assessment and must meet certain criteria in order to participate in the nonstructural project. More information about the general nonstructural process can be found in Appendix L. Additional details concerning eligibility criteria will be developed during the design and construction phases.



Structure Inventory: Data on study area structures were collected in 2012 via visual assessment.

Imagery: Louisiana NAIP Imagery 2013



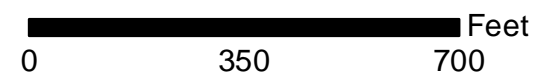
Southwest Coastal NED Plan



PROJECT STRUCTURES

- RESIDENTIAL
- NON-RESIDENTIAL
- WAREHOUSE

Structures identified as preliminarily eligible require additional on-site assessment and must meet certain criteria in order to participate in the nonstructural project. More information about the general nonstructural process can be found in Appendix L. Additional details concerning eligibility criteria will be developed during the design and construction phases.



Structure Inventory: Data on study area structures were collected in 2012 via visual assessment.

Imagery: Louisiana NAIP Imagery 2013



Southwest Coastal NED Plan

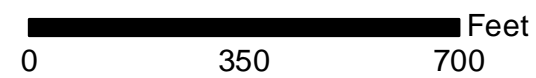


415

PROJECT STRUCTURES

- RESIDENTIAL
- NON-RESIDENTIAL
- WAREHOUSE

Structures identified as preliminarily eligible require additional on-site assessment and must meet certain criteria in order to participate in the nonstructural project. More information about the general nonstructural process can be found in Appendix L. Additional details concerning eligibility criteria will be developed during the design and construction phases.



Structure Inventory: Data on study area structures were collected in 2012 via visual assessment.

Imagery: Louisiana NAIP Imagery 2013



Southwest Coastal NED Plan



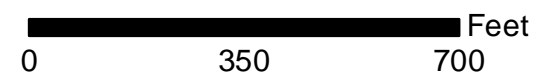
414

416

PROJECT STRUCTURES

- RESIDENTIAL
- NON-RESIDENTIAL
- WAREHOUSE

Structures identified as preliminarily eligible require additional on-site assessment and must meet certain criteria in order to participate in the nonstructural project. More information about the general nonstructural process can be found in Appendix L. Additional details concerning eligibility criteria will be developed during the design and construction phases.



Structure Inventory: Data on study area structures were collected in 2012 via visual assessment.

Imagery: Louisiana NAIP Imagery 2013



Southwest Coastal NED Plan

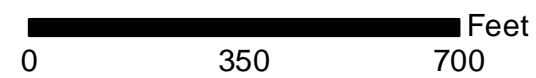


415

PROJECT STRUCTURES

- RESIDENTIAL
- NON-RESIDENTIAL
- WAREHOUSE

Structures identified as preliminarily eligible require additional on-site assessment and must meet certain criteria in order to participate in the nonstructural project. More information about the general nonstructural process can be found in Appendix L. Additional details concerning eligibility criteria will be developed during the design and construction phases.



Structure Inventory: Data on study area structures were collected in 2012 via visual assessment.

Imagery: Louisiana NAIP Imagery 2013



Southwest Coastal NED Plan

406



418

PROJECT STRUCTURES

- RESIDENTIAL
- NON-RESIDENTIAL
- WAREHOUSE

Structures identified as preliminarily eligible require additional on-site assessment and must meet certain criteria in order to participate in the nonstructural project. More information about the general nonstructural process can be found in Appendix L. Additional details concerning eligibility criteria will be developed during the design and construction phases.

428



Structure Inventory: Data on study area structures were collected in 2012 via visual assessment.

Imagery: Louisiana NAIP Imagery 2013



Southwest Coastal NED Plan

407



417

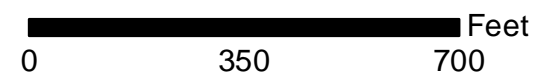
419

429

PROJECT STRUCTURES

- RESIDENTIAL
- NON-RESIDENTIAL
- WAREHOUSE

Structures identified as preliminarily eligible require additional on-site assessment and must meet certain criteria in order to participate in the nonstructural project. More information about the general nonstructural process can be found in Appendix L. Additional details concerning eligibility criteria will be developed during the design and construction phases.



Structure Inventory: Data on study area structures were collected in 2012 via visual assessment.

Imagery: Louisiana NAIP Imagery 2013



Southwest Coastal NED Plan

408



418

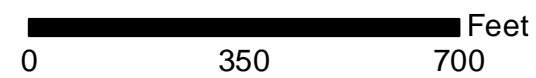
420

430

PROJECT STRUCTURES

- RESIDENTIAL
- NON-RESIDENTIAL
- WAREHOUSE

Structures identified as preliminarily eligible require additional on-site assessment and must meet certain criteria in order to participate in the nonstructural project. More information about the general nonstructural process can be found in Appendix L. Additional details concerning eligibility criteria will be developed during the design and construction phases.



Structure Inventory: Data on study area structures were collected in 2012 via visual assessment.

Imagery: Louisiana NAIP Imagery 2013



Southwest Coastal NED Plan

409



419

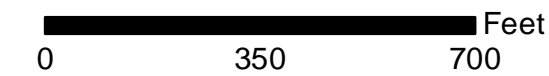
421

431

PROJECT STRUCTURES

- RESIDENTIAL
- NON-RESIDENTIAL
- WAREHOUSE

Structures identified as preliminarily eligible require additional on-site assessment and must meet certain criteria in order to participate in the nonstructural project. More information about the general nonstructural process can be found in Appendix L. Additional details concerning eligibility criteria will be developed during the design and construction phases.



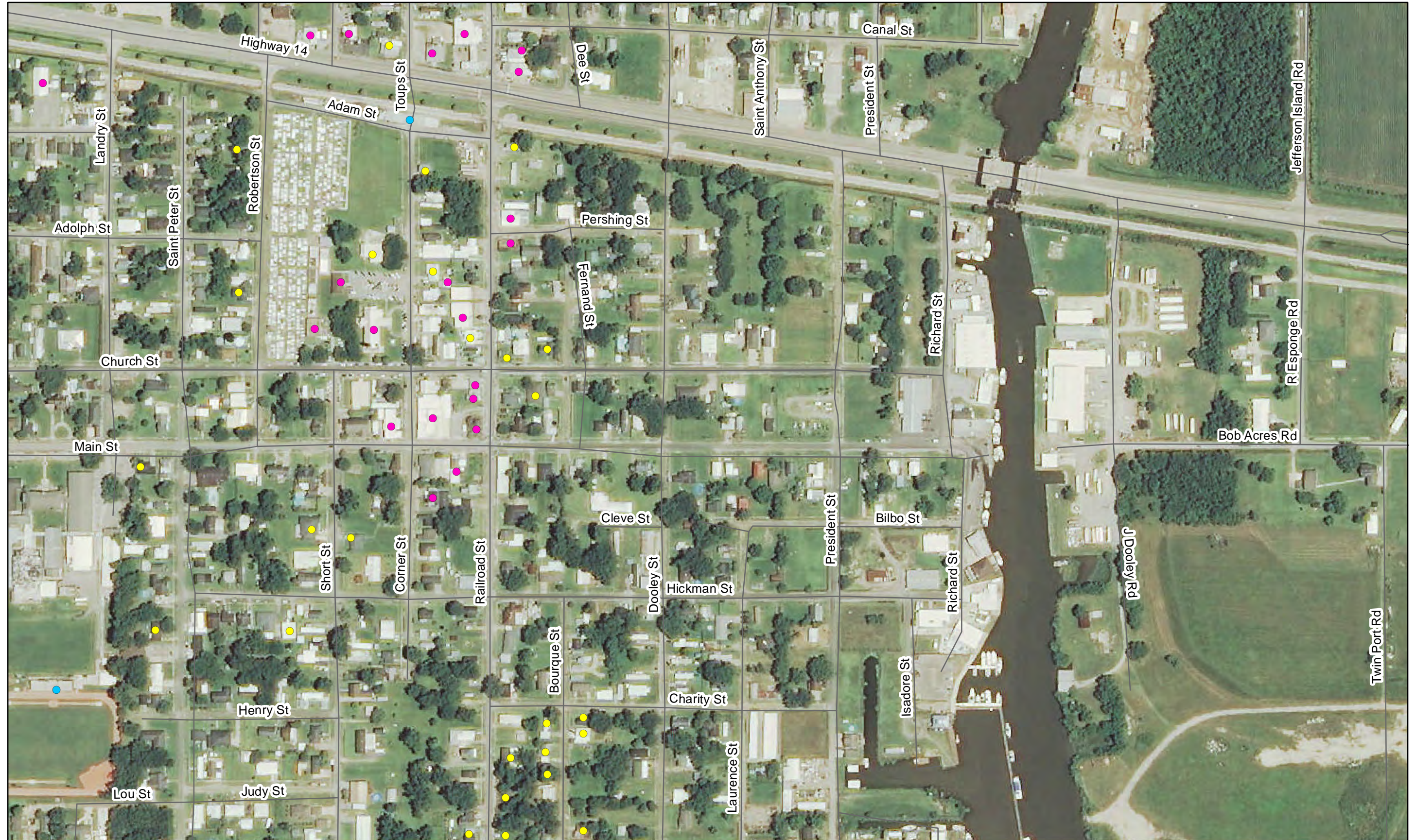
Structure Inventory: Data on study area structures were collected in 2012 via visual assessment.

Imagery: Louisiana NAIP Imagery 2013



Southwest Coastal NED Plan

410



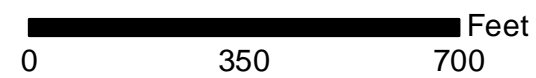
420

432

PROJECT STRUCTURES

- RESIDENTIAL
- NON-RESIDENTIAL
- WAREHOUSE

Structures identified as preliminarily eligible require additional on-site assessment and must meet certain criteria in order to participate in the nonstructural project. More information about the general nonstructural process can be found in Appendix L. Additional details concerning eligibility criteria will be developed during the design and construction phases.



Structure Inventory: Data on study area structures were collected in 2012 via visual assessment.

Imagery: Louisiana NAIP Imagery 2013



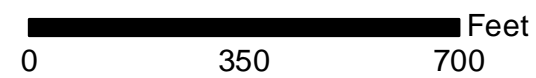
Southwest Coastal NED Plan



PROJECT STRUCTURES

- RESIDENTIAL
- NON-RESIDENTIAL
- WAREHOUSE

Structures identified as preliminarily eligible require additional on-site assessment and must meet certain criteria in order to participate in the nonstructural project. More information about the general nonstructural process can be found in Appendix L. Additional details concerning eligibility criteria will be developed during the design and construction phases.



Structure Inventory: Data on study area structures were collected in 2012 via visual assessment.

Imagery: Louisiana NAIP Imagery 2013



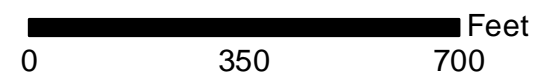
Southwest Coastal NED Plan



PROJECT STRUCTURES

- RESIDENTIAL
- NON-RESIDENTIAL
- WAREHOUSE

Structures identified as preliminarily eligible require additional on-site assessment and must meet certain criteria in order to participate in the nonstructural project. More information about the general nonstructural process can be found in Appendix L. Additional details concerning eligibility criteria will be developed during the design and construction phases.



Structure Inventory: Data on study area structures were collected in 2012 via visual assessment.

Imagery: Louisiana NAIP Imagery 2013



Southwest Coastal NED Plan

411

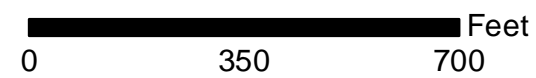


PROJECT STRUCTURES

- RESIDENTIAL
- NON-RESIDENTIAL
- WAREHOUSE

Structures identified as preliminarily eligible require additional on-site assessment and must meet certain criteria in order to participate in the nonstructural project. More information about the general nonstructural process can be found in Appendix L. Additional details concerning eligibility criteria will be developed during the design and construction phases.

433



Structure Inventory: Data on study area structures were collected in 2012 via visual assessment.

Imagery: Louisiana NAIP Imagery 2013



Southwest Coastal NED Plan



PROJECT STRUCTURES

- RESIDENTIAL
- NON-RESIDENTIAL
- WAREHOUSE

Structures identified as preliminarily eligible require additional on-site assessment and must meet certain criteria in order to participate in the nonstructural project. More information about the general nonstructural process can be found in Appendix L. Additional details concerning eligibility criteria will be developed during the design and construction phases.

0 350 700 Feet

Structure Inventory: Data on study area structures were collected in 2012 via visual assessment.

Imagery: Louisiana NAIP Imagery 2013



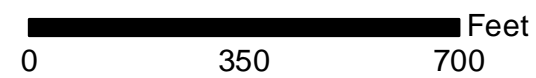
Southwest Coastal NED Plan



PROJECT STRUCTURES

- RESIDENTIAL
- NON-RESIDENTIAL
- WAREHOUSE

Structures identified as preliminarily eligible require additional on-site assessment and must meet certain criteria in order to participate in the nonstructural project. More information about the general nonstructural process can be found in Appendix L. Additional details concerning eligibility criteria will be developed during the design and construction phases.



Structure Inventory: Data on study area structures were collected in 2012 via visual assessment.

Imagery: Louisiana NAIP Imagery 2013



Southwest Coastal NED Plan



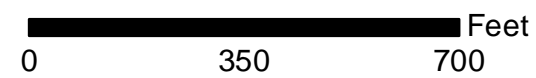
428

PROJECT STRUCTURES

- RESIDENTIAL
- NON-RESIDENTIAL
- WAREHOUSE

Structures identified as preliminarily eligible require additional on-site assessment and must meet certain criteria in order to participate in the nonstructural project. More information about the general nonstructural process can be found in Appendix L. Additional details concerning eligibility criteria will be developed during the design and construction phases.

437



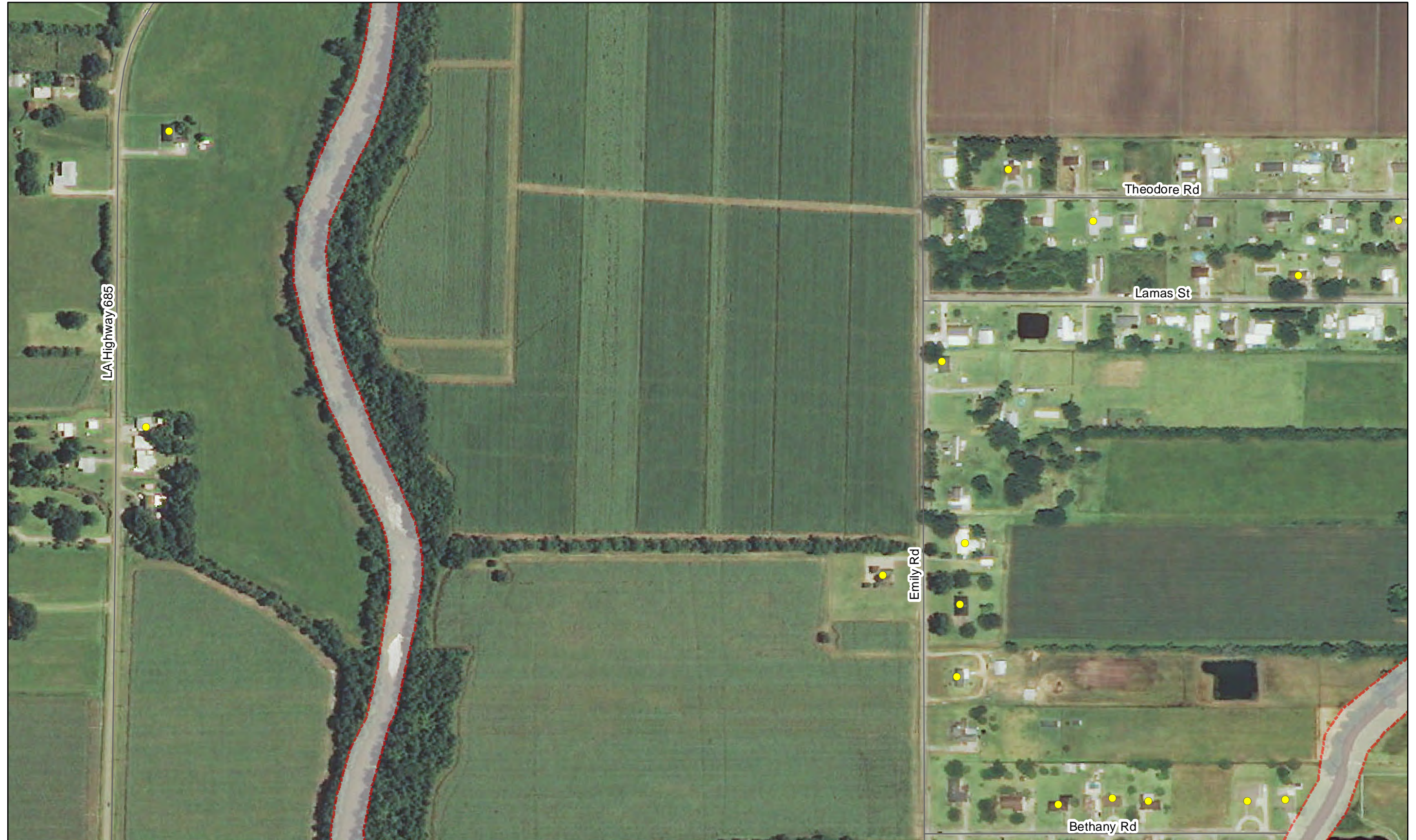
Structure Inventory: Data on study area structures were collected in 2012 via visual assessment.

Imagery: Louisiana NAIP Imagery 2013



Southwest Coastal NED Plan

417



427

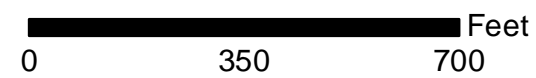
429

438

PROJECT STRUCTURES

- RESIDENTIAL
- NON-RESIDENTIAL
- WAREHOUSE

Structures identified as preliminarily eligible require additional on-site assessment and must meet certain criteria in order to participate in the nonstructural project. More information about the general nonstructural process can be found in Appendix L. Additional details concerning eligibility criteria will be developed during the design and construction phases.



Structure Inventory: Data on study area structures were collected in 2012 via visual assessment.

Imagery: Louisiana NAIP Imagery 2013



Southwest Coastal NED Plan

418



428

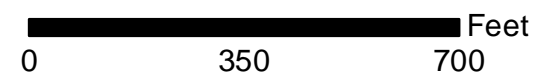
430

439

PROJECT STRUCTURES

- RESIDENTIAL
- NON-RESIDENTIAL
- WAREHOUSE

Structures identified as preliminarily eligible require additional on-site assessment and must meet certain criteria in order to participate in the nonstructural project. More information about the general nonstructural process can be found in Appendix L. Additional details concerning eligibility criteria will be developed during the design and construction phases.



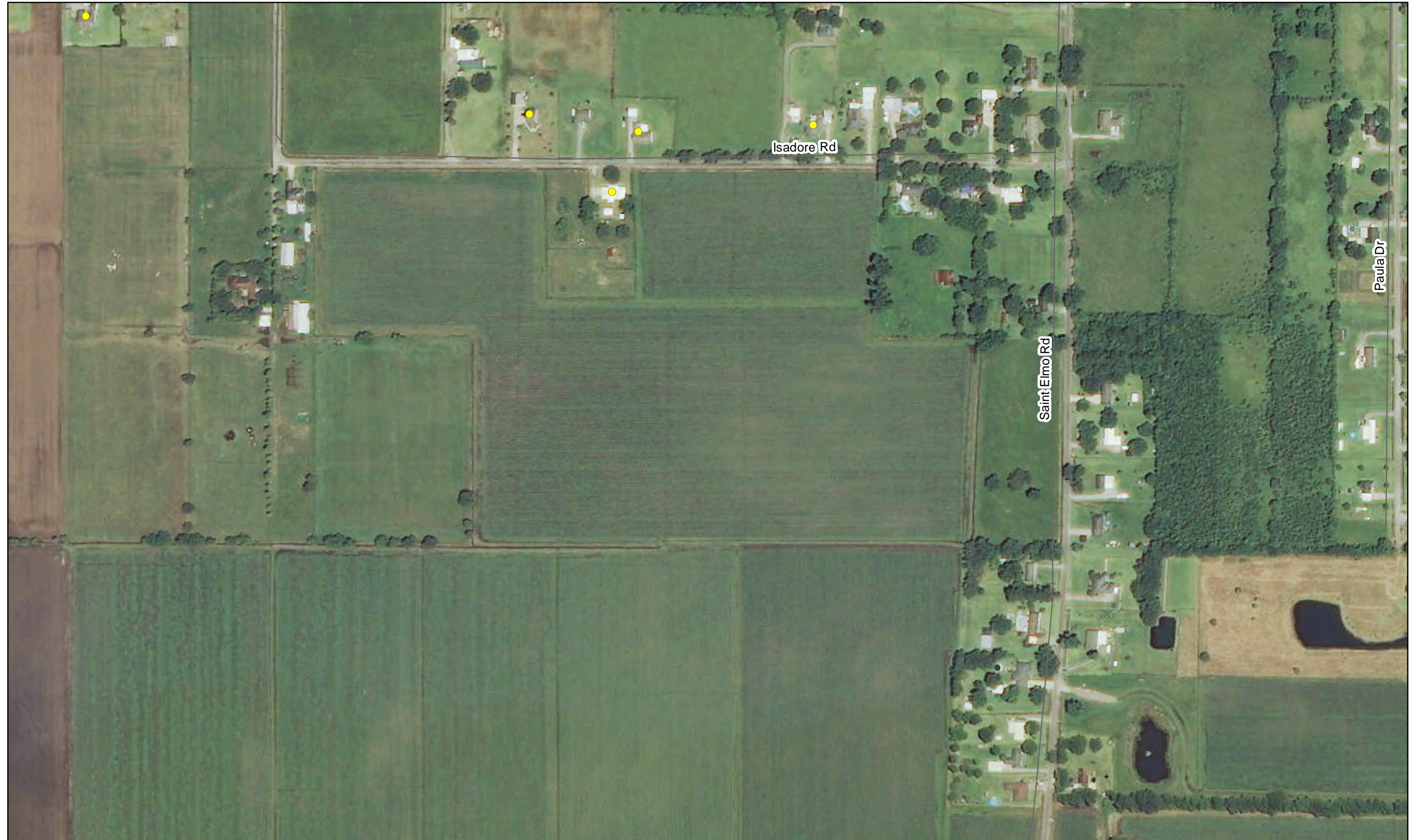
Structure Inventory: Data on study area structures were collected in 2012 via visual assessment.

Imagery: Louisiana NAIP Imagery 2013



Southwest Coastal NED Plan

419



429

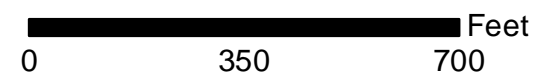
431

PROJECT STRUCTURES

- RESIDENTIAL
- NON-RESIDENTIAL
- WAREHOUSE

Structures identified as preliminarily eligible require additional on-site assessment and must meet certain criteria in order to participate in the nonstructural project. More information about the general nonstructural process can be found in Appendix L. Additional details concerning eligibility criteria will be developed during the design and construction phases.

440



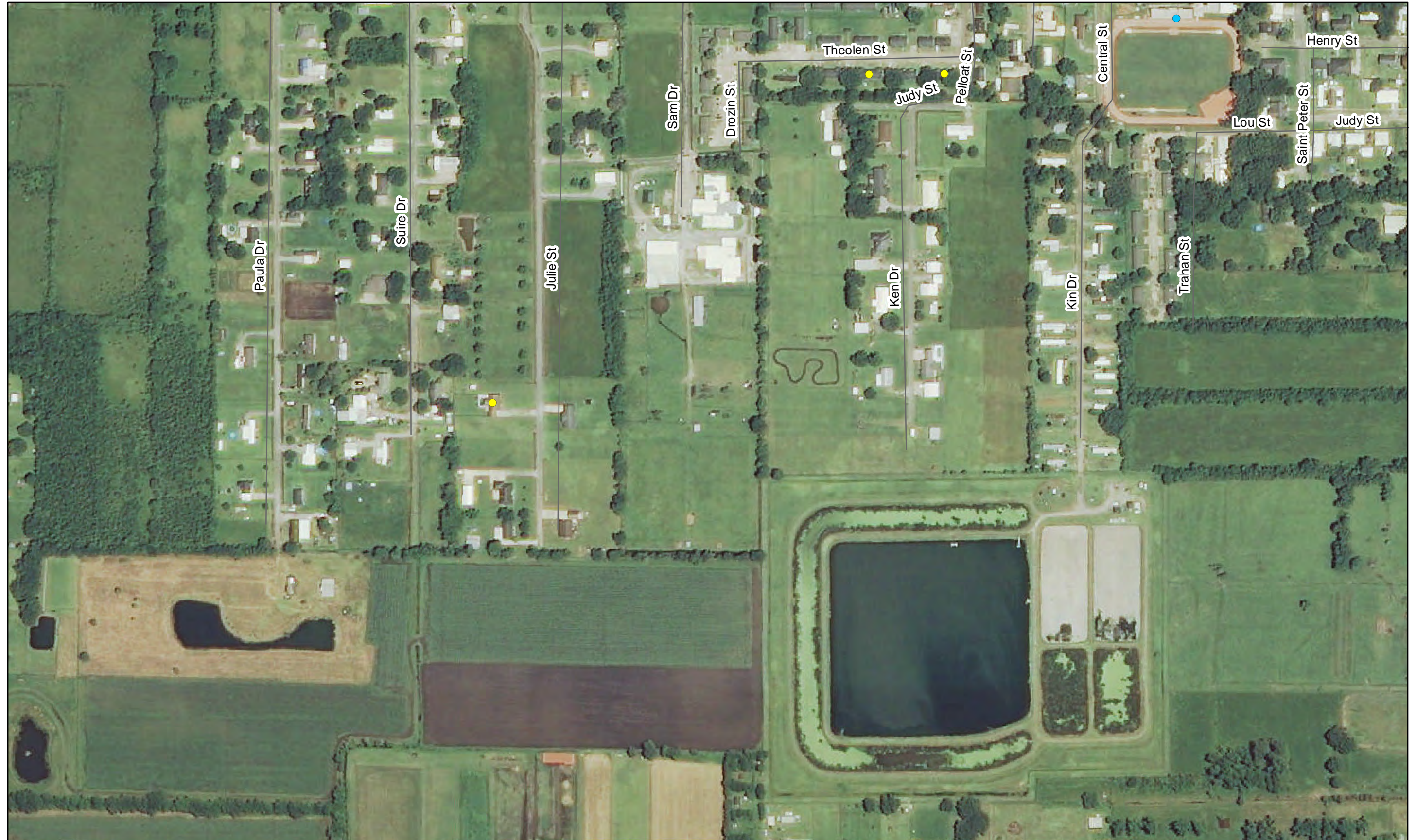
Structure Inventory: Data on study area structures were collected in 2012 via visual assessment.

Imagery: Louisiana NAIP Imagery 2013



Southwest Coastal NED Plan

420



430

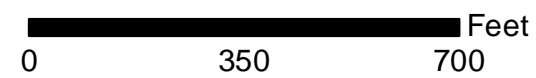
432

441

PROJECT STRUCTURES

- RESIDENTIAL
- NON-RESIDENTIAL
- WAREHOUSE

Structures identified as preliminarily eligible require additional on-site assessment and must meet certain criteria in order to participate in the nonstructural project. More information about the general nonstructural process can be found in Appendix L. Additional details concerning eligibility criteria will be developed during the design and construction phases.



Structure Inventory: Data on study area structures were collected in 2012 via visual assessment.

Imagery: Louisiana NAIP Imagery 2013



Southwest Coastal NED Plan

421

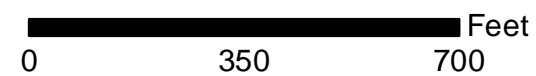


431

442

PROJECT STRUCTURES	
●	RESIDENTIAL
●	NON-RESIDENTIAL
●	WAREHOUSE

Structures identified as preliminarily eligible require additional on-site assessment and must meet certain criteria in order to participate in the nonstructural project. More information about the general nonstructural process can be found in Appendix L. Additional details concerning eligibility criteria will be developed during the design and construction phases.



Structure Inventory: Data on study area structures were collected in 2012 via visual assessment.

Imagery: Louisiana NAIP Imagery 2013



Southwest Coastal NED Plan

424



PROJECT STRUCTURES

- RESIDENTIAL
- NON-RESIDENTIAL
- WAREHOUSE

Structures identified as preliminarily eligible require additional on-site assessment and must meet certain criteria in order to participate in the nonstructural project. More information about the general nonstructural process can be found in Appendix L. Additional details concerning eligibility criteria will be developed during the design and construction phases.



Structure Inventory: Data on study area structures were collected in 2012 via visual assessment.

Imagery: Louisiana NAIP Imagery 2013



Southwest Coastal NED Plan



PROJECT STRUCTURES

- RESIDENTIAL
- NON-RESIDENTIAL
- WAREHOUSE

Structures identified as preliminarily eligible require additional on-site assessment and must meet certain criteria in order to participate in the nonstructural project. More information about the general nonstructural process can be found in Appendix L. Additional details concerning eligibility criteria will be developed during the design and construction phases.

0 350 700 Feet

Structure Inventory: Data on study area structures were collected in 2012 via visual assessment.

Imagery: Louisiana NAIP Imagery 2013



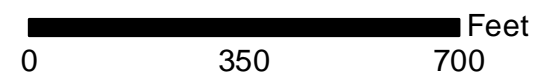
Southwest Coastal NED Plan



436

PROJECT STRUCTURES	
●	RESIDENTIAL
●	NON-RESIDENTIAL
●	WAREHOUSE

Structures identified as preliminarily eligible require additional on-site assessment and must meet certain criteria in order to participate in the nonstructural project. More information about the general nonstructural process can be found in Appendix L. Additional details concerning eligibility criteria will be developed during the design and construction phases.



Structure Inventory: Data on study area structures were collected in 2012 via visual assessment.

Imagery: Louisiana NAIP Imagery 2013



Southwest Coastal NED Plan

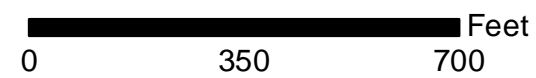


435

PROJECT STRUCTURES

- RESIDENTIAL
- NON-RESIDENTIAL
- WAREHOUSE

Structures identified as preliminarily eligible require additional on-site assessment and must meet certain criteria in order to participate in the nonstructural project. More information about the general nonstructural process can be found in Appendix L. Additional details concerning eligibility criteria will be developed during the design and construction phases.



Structure Inventory: Data on study area structures were collected in 2012 via visual assessment.

Imagery: Louisiana NAIP Imagery 2013



Southwest Coastal NED Plan

427



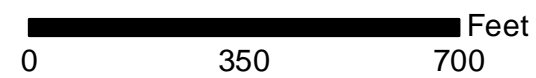
438

PROJECT STRUCTURES

- RESIDENTIAL
- NON-RESIDENTIAL
- WAREHOUSE

Structures identified as preliminarily eligible require additional on-site assessment and must meet certain criteria in order to participate in the nonstructural project. More information about the general nonstructural process can be found in Appendix L. Additional details concerning eligibility criteria will be developed during the design and construction phases.

447



Structure Inventory: Data on study area structures were collected in 2012 via visual assessment.

Imagery: Louisiana NAIP Imagery 2013



Southwest Coastal NED Plan

428



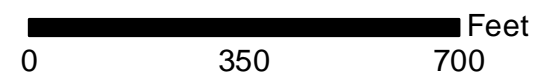
437

439

PROJECT STRUCTURES

- RESIDENTIAL
- NON-RESIDENTIAL
- WAREHOUSE

Structures identified as preliminarily eligible require additional on-site assessment and must meet certain criteria in order to participate in the nonstructural project. More information about the general nonstructural process can be found in Appendix L. Additional details concerning eligibility criteria will be developed during the design and construction phases.



Structure Inventory: Data on study area structures were collected in 2012 via visual assessment.

Imagery: Louisiana NAIP Imagery 2013



Southwest Coastal NED Plan

429



438

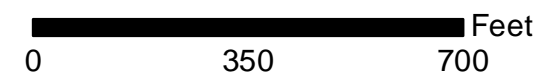
440

PROJECT STRUCTURES

- RESIDENTIAL
- NON-RESIDENTIAL
- WAREHOUSE

Structures identified as preliminarily eligible require additional on-site assessment and must meet certain criteria in order to participate in the nonstructural project. More information about the general nonstructural process can be found in Appendix L. Additional details concerning eligibility criteria will be developed during the design and construction phases.

448



Structure Inventory: Data on study area structures were collected in 2012 via visual assessment.

Imagery: Louisiana NAIP Imagery 2013



Southwest Coastal NED Plan

430



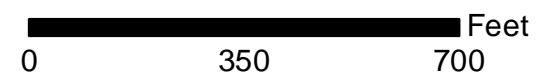
439

441

PROJECT STRUCTURES

- RESIDENTIAL
- NON-RESIDENTIAL
- WAREHOUSE

Structures identified as preliminarily eligible require additional on-site assessment and must meet certain criteria in order to participate in the nonstructural project. More information about the general nonstructural process can be found in Appendix L. Additional details concerning eligibility criteria will be developed during the design and construction phases.



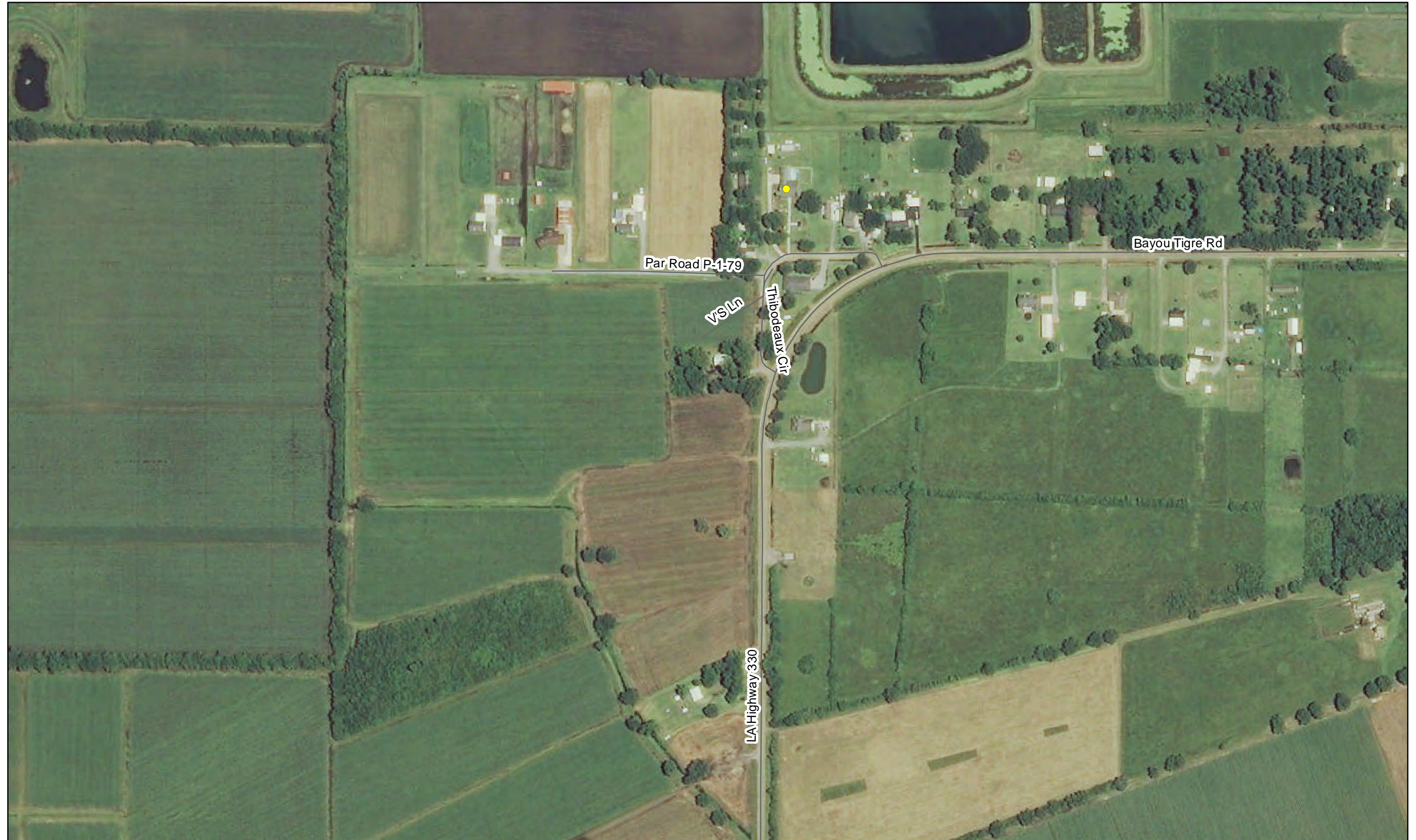
Structure Inventory: Data on study area structures were collected in 2012 via visual assessment.

Imagery: Louisiana NAIP Imagery 2013



Southwest Coastal NED Plan

431



440

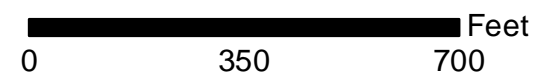
442

449

PROJECT STRUCTURES

- RESIDENTIAL
- NON-RESIDENTIAL
- WAREHOUSE

Structures identified as preliminarily eligible require additional on-site assessment and must meet certain criteria in order to participate in the nonstructural project. More information about the general nonstructural process can be found in Appendix L. Additional details concerning eligibility criteria will be developed during the design and construction phases.



Structure Inventory: Data on study area structures were collected in 2012 via visual assessment.

Imagery: Louisiana NAIP Imagery 2013



Southwest Coastal NED Plan

432



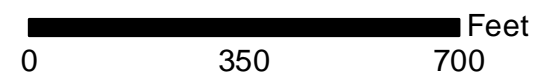
441

PROJECT STRUCTURES

- RESIDENTIAL
- NON-RESIDENTIAL
- WAREHOUSE

Structures identified as preliminarily eligible require additional on-site assessment and must meet certain criteria in order to participate in the nonstructural project. More information about the general nonstructural process can be found in Appendix L. Additional details concerning eligibility criteria will be developed during the design and construction phases.

450



Structure Inventory: Data on study area structures were collected in 2012 via visual assessment.

Imagery: Louisiana NAIP Imagery 2013



Southwest Coastal NED Plan



PROJECT STRUCTURES

- RESIDENTIAL
- NON-RESIDENTIAL
- WAREHOUSE

Structures identified as preliminarily eligible require additional on-site assessment and must meet certain criteria in order to participate in the nonstructural project. More information about the general nonstructural process can be found in Appendix L. Additional details concerning eligibility criteria will be developed during the design and construction phases.

0 350 700 Feet

Structure Inventory: Data on study area structures were collected in 2012 via visual assessment.

Imagery: Louisiana NAIP Imagery 2013



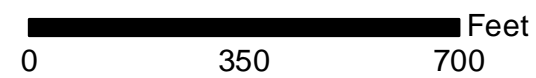
Southwest Coastal NED Plan



PROJECT STRUCTURES

- RESIDENTIAL
- NON-RESIDENTIAL
- WAREHOUSE

Structures identified as preliminarily eligible require additional on-site assessment and must meet certain criteria in order to participate in the nonstructural project. More information about the general nonstructural process can be found in Appendix L. Additional details concerning eligibility criteria will be developed during the design and construction phases.



Structure Inventory: Data on study area structures were collected in 2012 via visual assessment.

Imagery: Louisiana NAIP Imagery 2013



Southwest Coastal NED Plan

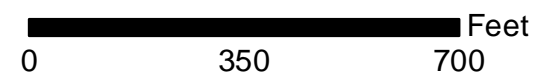


PROJECT STRUCTURES

- RESIDENTIAL
- NON-RESIDENTIAL
- WAREHOUSE

Structures identified as preliminarily eligible require additional on-site assessment and must meet certain criteria in order to participate in the nonstructural project. More information about the general nonstructural process can be found in Appendix L. Additional details concerning eligibility criteria will be developed during the design and construction phases.

453



Structure Inventory: Data on study area structures were collected in 2012 via visual assessment.

Imagery: Louisiana NAIP Imagery 2013



Southwest Coastal NED Plan



PROJECT STRUCTURES

- RESIDENTIAL
- NON-RESIDENTIAL
- WAREHOUSE

Structures identified as preliminarily eligible require additional on-site assessment and must meet certain criteria in order to participate in the nonstructural project. More information about the general nonstructural process can be found in Appendix L. Additional details concerning eligibility criteria will be developed during the design and construction phases.

0 350 700 Feet

Structure Inventory: Data on study area structures were collected in 2012 via visual assessment.

Imagery: Louisiana NAIP Imagery 2013



Southwest Coastal NED Plan

437

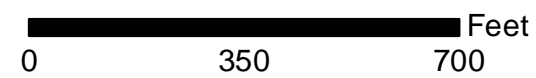


PROJECT STRUCTURES

- RESIDENTIAL
- NON-RESIDENTIAL
- WAREHOUSE

Structures identified as preliminarily eligible require additional on-site assessment and must meet certain criteria in order to participate in the nonstructural project. More information about the general nonstructural process can be found in Appendix L. Additional details concerning eligibility criteria will be developed during the design and construction phases.

455



Structure Inventory: Data on study area structures were collected in 2012 via visual assessment.

Imagery: Louisiana NAIP Imagery 2013



Southwest Coastal NED Plan

439

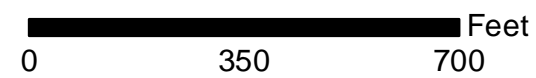


PROJECT STRUCTURES

- RESIDENTIAL
- NON-RESIDENTIAL
- WAREHOUSE

Structures identified as preliminarily eligible require additional on-site assessment and must meet certain criteria in order to participate in the nonstructural project. More information about the general nonstructural process can be found in Appendix L. Additional details concerning eligibility criteria will be developed during the design and construction phases.

457



Structure Inventory: Data on study area structures were collected in 2012 via visual assessment.

Imagery: Louisiana NAIP Imagery 2013



Southwest Coastal NED Plan

441



450

PROJECT STRUCTURES

- RESIDENTIAL
- NON-RESIDENTIAL
- WAREHOUSE

Structures identified as preliminarily eligible require additional on-site assessment and must meet certain criteria in order to participate in the nonstructural project. More information about the general nonstructural process can be found in Appendix L. Additional details concerning eligibility criteria will be developed during the design and construction phases.

0 350 700 Feet

Structure Inventory: Data on study area structures were collected in 2012 via visual assessment.

Imagery: Louisiana NAIP Imagery 2013



Southwest Coastal NED Plan

442



449

PROJECT STRUCTURES

- RESIDENTIAL
- NON-RESIDENTIAL
- WAREHOUSE

Structures identified as preliminarily eligible require additional on-site assessment and must meet certain criteria in order to participate in the nonstructural project. More information about the general nonstructural process can be found in Appendix L. Additional details concerning eligibility criteria will be developed during the design and construction phases.

0 350 700 Feet

Structure Inventory: Data on study area structures were collected in 2012 via visual assessment.

Imagery: Louisiana NAIP Imagery 2013



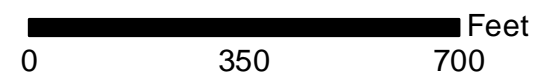
Southwest Coastal NED Plan



PROJECT STRUCTURES

- RESIDENTIAL
- NON-RESIDENTIAL
- WAREHOUSE

Structures identified as preliminarily eligible require additional on-site assessment and must meet certain criteria in order to participate in the nonstructural project. More information about the general nonstructural process can be found in Appendix L. Additional details concerning eligibility criteria will be developed during the design and construction phases.



Structure Inventory: Data on study area structures were collected in 2012 via visual assessment.

Imagery: Louisiana NAIP Imagery 2013



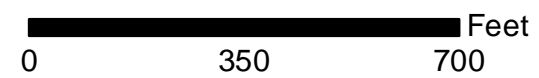
Southwest Coastal NED Plan



PROJECT STRUCTURES

- RESIDENTIAL
- NON-RESIDENTIAL
- WAREHOUSE

Structures identified as preliminarily eligible require additional on-site assessment and must meet certain criteria in order to participate in the nonstructural project. More information about the general nonstructural process can be found in Appendix L. Additional details concerning eligibility criteria will be developed during the design and construction phases.



Structure Inventory: Data on study area structures were collected in 2012 via visual assessment.

Imagery: Louisiana NAIP Imagery 2013



Southwest Coastal NED Plan

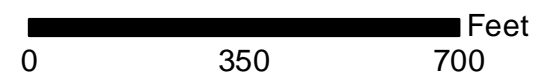
445



PROJECT STRUCTURES

- RESIDENTIAL
- NON-RESIDENTIAL
- WAREHOUSE

Structures identified as preliminarily eligible require additional on-site assessment and must meet certain criteria in order to participate in the nonstructural project. More information about the general nonstructural process can be found in Appendix L. Additional details concerning eligibility criteria will be developed during the design and construction phases.



Structure Inventory: Data on study area structures were collected in 2012 via visual assessment.

Imagery: Louisiana NAIP Imagery 2013



Southwest Coastal NED Plan

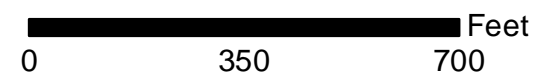


PROJECT STRUCTURES

- RESIDENTIAL
- NON-RESIDENTIAL
- WAREHOUSE

Structures identified as preliminarily eligible require additional on-site assessment and must meet certain criteria in order to participate in the nonstructural project. More information about the general nonstructural process can be found in Appendix L. Additional details concerning eligibility criteria will be developed during the design and construction phases.

459



Structure Inventory: Data on study area structures were collected in 2012 via visual assessment.

Imagery: Louisiana NAIP Imagery 2013



Southwest Coastal NED Plan

447

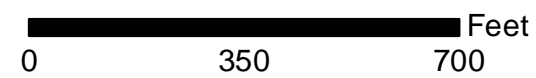


456

PROJECT STRUCTURES

- RESIDENTIAL
- NON-RESIDENTIAL
- WAREHOUSE

Structures identified as preliminarily eligible require additional on-site assessment and must meet certain criteria in order to participate in the nonstructural project. More information about the general nonstructural process can be found in Appendix L. Additional details concerning eligibility criteria will be developed during the design and construction phases.



Structure Inventory: Data on study area structures were collected in 2012 via visual assessment.

Imagery: Louisiana NAIP Imagery 2013



Southwest Coastal NED Plan



455

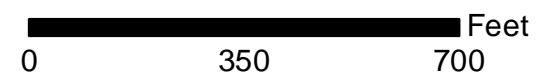
457

PROJECT STRUCTURES

- RESIDENTIAL
- NON-RESIDENTIAL
- WAREHOUSE

Structures identified as preliminarily eligible require additional on-site assessment and must meet certain criteria in order to participate in the nonstructural project. More information about the general nonstructural process can be found in Appendix L. Additional details concerning eligibility criteria will be developed during the design and construction phases.

460



Structure Inventory: Data on study area structures were collected in 2012 via visual assessment.

Imagery: Louisiana NAIP Imagery 2013



Southwest Coastal NED Plan

448



456

461

PROJECT STRUCTURES

- RESIDENTIAL
- NON-RESIDENTIAL
- WAREHOUSE

Structures identified as preliminarily eligible require additional on-site assessment and must meet certain criteria in order to participate in the nonstructural project. More information about the general nonstructural process can be found in Appendix L. Additional details concerning eligibility criteria will be developed during the design and construction phases.



Structure Inventory: Data on study area structures were collected in 2012 via visual assessment.

Imagery: Louisiana NAIP Imagery 2013



Southwest Coastal NED Plan



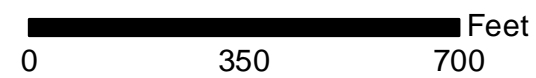
459

PROJECT STRUCTURES

- RESIDENTIAL
- NON-RESIDENTIAL
- WAREHOUSE

Structures identified as preliminarily eligible require additional on-site assessment and must meet certain criteria in order to participate in the nonstructural project. More information about the general nonstructural process can be found in Appendix L. Additional details concerning eligibility criteria will be developed during the design and construction phases.

465



Structure Inventory: Data on study area structures were collected in 2012 via visual assessment.

Imagery: Louisiana NAIP Imagery 2013



Southwest Coastal NED Plan

454

458

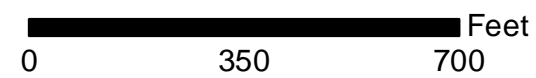


PROJECT STRUCTURES

- RESIDENTIAL
- NON-RESIDENTIAL
- WAREHOUSE

Structures identified as preliminarily eligible require additional on-site assessment and must meet certain criteria in order to participate in the nonstructural project. More information about the general nonstructural process can be found in Appendix L. Additional details concerning eligibility criteria will be developed during the design and construction phases.

466



Structure Inventory: Data on study area structures were collected in 2012 via visual assessment.

Imagery: Louisiana NAIP Imagery 2013



Southwest Coastal NED Plan

456

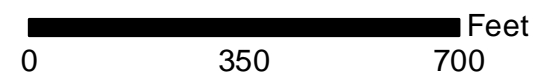


461

PROJECT STRUCTURES

- RESIDENTIAL
- NON-RESIDENTIAL
- WAREHOUSE

Structures identified as preliminarily eligible require additional on-site assessment and must meet certain criteria in order to participate in the nonstructural project. More information about the general nonstructural process can be found in Appendix L. Additional details concerning eligibility criteria will be developed during the design and construction phases.



Structure Inventory: Data on study area structures were collected in 2012 via visual assessment.

Imagery: Louisiana NAIP Imagery 2013



Southwest Coastal NED Plan

457



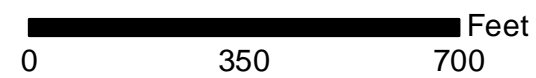
460

462

PROJECT STRUCTURES

- RESIDENTIAL
- NON-RESIDENTIAL
- WAREHOUSE

Structures identified as preliminarily eligible require additional on-site assessment and must meet certain criteria in order to participate in the nonstructural project. More information about the general nonstructural process can be found in Appendix L. Additional details concerning eligibility criteria will be developed during the design and construction phases.



Structure Inventory: Data on study area structures were collected in 2012 via visual assessment.

Imagery: Louisiana NAIP Imagery 2013



Southwest Coastal NED Plan



461

463

PROJECT STRUCTURES

- RESIDENTIAL
- NON-RESIDENTIAL
- WAREHOUSE

Structures identified as preliminarily eligible require additional on-site assessment and must meet certain criteria in order to participate in the nonstructural project. More information about the general nonstructural process can be found in Appendix L. Additional details concerning eligibility criteria will be developed during the design and construction phases.

0 350 700 Feet

Structure Inventory: Data on study area structures were collected in 2012 via visual assessment.

Imagery: Louisiana NAIP Imagery 2013



Southwest Coastal NED Plan



462

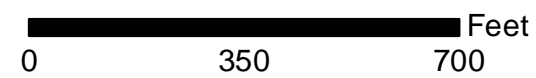
464

468

PROJECT STRUCTURES

- RESIDENTIAL
- NON-RESIDENTIAL
- WAREHOUSE

Structures identified as preliminarily eligible require additional on-site assessment and must meet certain criteria in order to participate in the nonstructural project. More information about the general nonstructural process can be found in Appendix L. Additional details concerning eligibility criteria will be developed during the design and construction phases.



Structure Inventory: Data on study area structures were collected in 2012 via visual assessment.

Imagery: Louisiana NAIP Imagery 2013



Southwest Coastal NED Plan



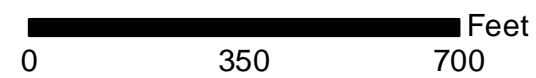
463

469

PROJECT STRUCTURES

- RESIDENTIAL
- NON-RESIDENTIAL
- WAREHOUSE

Structures identified as preliminarily eligible require additional on-site assessment and must meet certain criteria in order to participate in the nonstructural project. More information about the general nonstructural process can be found in Appendix L. Additional details concerning eligibility criteria will be developed during the design and construction phases.



Structure Inventory: Data on study area structures were collected in 2012 via visual assessment.

Imagery: Louisiana NAIP Imagery 2013



Southwest Coastal NED Plan

458



466

PROJECT STRUCTURES

- RESIDENTIAL
- NON-RESIDENTIAL
- WAREHOUSE

Structures identified as preliminarily eligible require additional on-site assessment and must meet certain criteria in order to participate in the nonstructural project. More information about the general nonstructural process can be found in Appendix L. Additional details concerning eligibility criteria will be developed during the design and construction phases.



Structure Inventory: Data on study area structures were collected in 2012 via visual assessment.

Imagery: Louisiana NAIP Imagery 2013



Southwest Coastal NED Plan

459



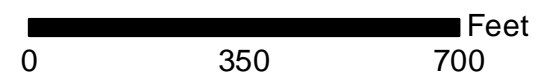
465

467

PROJECT STRUCTURES

- RESIDENTIAL
- NON-RESIDENTIAL
- WAREHOUSE

Structures identified as preliminarily eligible require additional on-site assessment and must meet certain criteria in order to participate in the nonstructural project. More information about the general nonstructural process can be found in Appendix L. Additional details concerning eligibility criteria will be developed during the design and construction phases.



Structure Inventory: Data on study area structures were collected in 2012 via visual assessment.

Imagery: Louisiana NAIP Imagery 2013



Southwest Coastal NED Plan

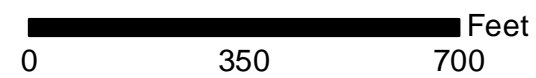


466

PROJECT STRUCTURES

- RESIDENTIAL
- NON-RESIDENTIAL
- WAREHOUSE

Structures identified as preliminarily eligible require additional on-site assessment and must meet certain criteria in order to participate in the nonstructural project. More information about the general nonstructural process can be found in Appendix L. Additional details concerning eligibility criteria will be developed during the design and construction phases.



Structure Inventory: Data on study area structures were collected in 2012 via visual assessment.

Imagery: Louisiana NAIP Imagery 2013



Southwest Coastal NED Plan

463

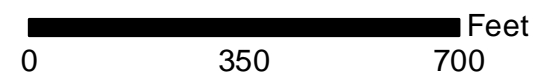


469

PROJECT STRUCTURES

- RESIDENTIAL
- NON-RESIDENTIAL
- WAREHOUSE

Structures identified as preliminarily eligible require additional on-site assessment and must meet certain criteria in order to participate in the nonstructural project. More information about the general nonstructural process can be found in Appendix L. Additional details concerning eligibility criteria will be developed during the design and construction phases.



Structure Inventory: Data on study area structures were collected in 2012 via visual assessment.

Imagery: Louisiana NAIP Imagery 2013



Southwest Coastal NED Plan

464

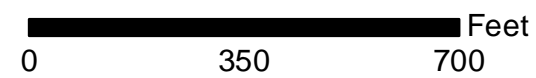


468

PROJECT STRUCTURES

- RESIDENTIAL
- NON-RESIDENTIAL
- WAREHOUSE

Structures identified as preliminarily eligible require additional on-site assessment and must meet certain criteria in order to participate in the nonstructural project. More information about the general nonstructural process can be found in Appendix L. Additional details concerning eligibility criteria will be developed during the design and construction phases.



Structure Inventory: Data on study area structures were collected in 2012 via visual assessment.

Imagery: Louisiana NAIP Imagery 2013



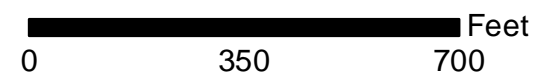
Southwest Coastal NED Plan



PROJECT STRUCTURES

- RESIDENTIAL
- NON-RESIDENTIAL
- WAREHOUSE

Structures identified as preliminarily eligible require additional on-site assessment and must meet certain criteria in order to participate in the nonstructural project. More information about the general nonstructural process can be found in Appendix L. Additional details concerning eligibility criteria will be developed during the design and construction phases.



Structure Inventory: Data on study area structures were collected in 2012 via visual assessment.

Imagery: Louisiana NAIP Imagery 2013



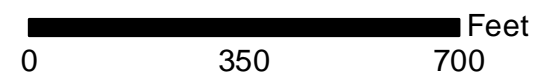
Southwest Coastal NED Plan



PROJECT STRUCTURES

- RESIDENTIAL
- NON-RESIDENTIAL
- WAREHOUSE

Structures identified as preliminarily eligible require additional on-site assessment and must meet certain criteria in order to participate in the nonstructural project. More information about the general nonstructural process can be found in Appendix L. Additional details concerning eligibility criteria will be developed during the design and construction phases.



Structure Inventory: Data on study area structures were collected in 2012 via visual assessment.

Imagery: Louisiana NAIP Imagery 2013



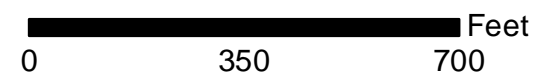
Southwest Coastal NED Plan



PROJECT STRUCTURES

- RESIDENTIAL
- NON-RESIDENTIAL
- WAREHOUSE

Structures identified as preliminarily eligible require additional on-site assessment and must meet certain criteria in order to participate in the nonstructural project. More information about the general nonstructural process can be found in Appendix L. Additional details concerning eligibility criteria will be developed during the design and construction phases.



Structure Inventory: Data on study area structures were collected in 2012 via visual assessment.

Imagery: Louisiana NAIP Imagery 2013



Southwest Coastal NED Plan



PROJECT STRUCTURES

- RESIDENTIAL
- NON-RESIDENTIAL
- WAREHOUSE

Structures identified as preliminarily eligible require additional on-site assessment and must meet certain criteria in order to participate in the nonstructural project. More information about the general nonstructural process can be found in Appendix L. Additional details concerning eligibility criteria will be developed during the design and construction phases.

475

0 350 700 Feet

Structure Inventory: Data on study area structures were collected in 2012 via visual assessment.

Imagery: Louisiana NAIP Imagery 2013



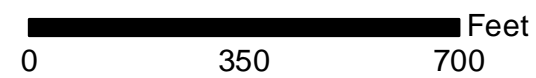
Southwest Coastal NED Plan



PROJECT STRUCTURES

- RESIDENTIAL
- NON-RESIDENTIAL
- WAREHOUSE

Structures identified as preliminarily eligible require additional on-site assessment and must meet certain criteria in order to participate in the nonstructural project. More information about the general nonstructural process can be found in Appendix L. Additional details concerning eligibility criteria will be developed during the design and construction phases.



Structure Inventory: Data on study area structures were collected in 2012 via visual assessment.

Imagery: Louisiana NAIP Imagery 2013



Southwest Coastal NED Plan

473



PROJECT STRUCTURES

- RESIDENTIAL
- NON-RESIDENTIAL
- WAREHOUSE

Structures identified as preliminarily eligible require additional on-site assessment and must meet certain criteria in order to participate in the nonstructural project. More information about the general nonstructural process can be found in Appendix L. Additional details concerning eligibility criteria will be developed during the design and construction phases.

0 350 700 Feet

Structure Inventory: Data on study area structures were collected in 2012 via visual assessment.

Imagery: Louisiana NAIP Imagery 2013



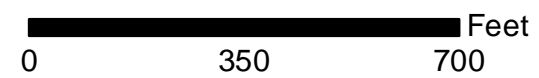
Southwest Coastal NED Plan



PROJECT STRUCTURES

- RESIDENTIAL
- NON-RESIDENTIAL
- WAREHOUSE

Structures identified as preliminarily eligible require additional on-site assessment and must meet certain criteria in order to participate in the nonstructural project. More information about the general nonstructural process can be found in Appendix L. Additional details concerning eligibility criteria will be developed during the design and construction phases.



Structure Inventory: Data on study area structures were collected in 2012 via visual assessment.

Imagery: Louisiana NAIP Imagery 2013



Southwest Coastal NED Plan



PROJECT STRUCTURES

- RESIDENTIAL
- NON-RESIDENTIAL
- WAREHOUSE

Structures identified as preliminarily eligible require additional on-site assessment and must meet certain criteria in order to participate in the nonstructural project. More information about the general nonstructural process can be found in Appendix L. Additional details concerning eligibility criteria will be developed during the design and construction phases.

0 350 700 Feet

Structure Inventory: Data on study area structures were collected in 2012 via visual assessment.

Imagery: Louisiana NAIP Imagery 2013



Southwest Coastal NED Plan



PROJECT STRUCTURES

- RESIDENTIAL
- NON-RESIDENTIAL
- WAREHOUSE

Structures identified as preliminarily eligible require additional on-site assessment and must meet certain criteria in order to participate in the nonstructural project. More information about the general nonstructural process can be found in Appendix L. Additional details concerning eligibility criteria will be developed during the design and construction phases.

0 350 700 Feet

Structure Inventory: Data on study area structures were collected in 2012 via visual assessment.

Imagery: Louisiana NAIP Imagery 2013



Southwest Coastal NED Plan



PROJECT STRUCTURES

- RESIDENTIAL
- NON-RESIDENTIAL
- WAREHOUSE

Structures identified as preliminarily eligible require additional on-site assessment and must meet certain criteria in order to participate in the nonstructural project. More information about the general nonstructural process can be found in Appendix L. Additional details concerning eligibility criteria will be developed during the design and construction phases.

0 350 700 Feet

Structure Inventory: Data on study area structures were collected in 2012 via visual assessment.

Imagery: Louisiana NAIP Imagery 2013



Southwest Coastal NED Plan

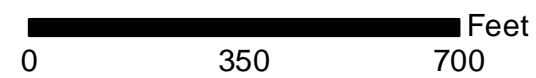


PROJECT STRUCTURES

- RESIDENTIAL
- NON-RESIDENTIAL
- WAREHOUSE

Structures identified as preliminarily eligible require additional on-site assessment and must meet certain criteria in order to participate in the nonstructural project. More information about the general nonstructural process can be found in Appendix L. Additional details concerning eligibility criteria will be developed during the design and construction phases.

494



Structure Inventory: Data on study area structures were collected in 2012 via visual assessment.

Imagery: Louisiana NAIP Imagery 2013



Southwest Coastal NED Plan



PROJECT STRUCTURES

- RESIDENTIAL
- NON-RESIDENTIAL
- WAREHOUSE

Structures identified as preliminarily eligible require additional on-site assessment and must meet certain criteria in order to participate in the nonstructural project. More information about the general nonstructural process can be found in Appendix L. Additional details concerning eligibility criteria will be developed during the design and construction phases.



Structure Inventory: Data on study area structures were collected in 2012 via visual assessment.

Imagery: Louisiana NAIP Imagery 2013



Southwest Coastal NED Plan

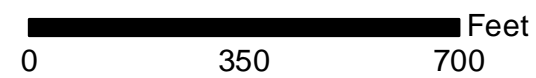


PROJECT STRUCTURES

- RESIDENTIAL
- NON-RESIDENTIAL
- WAREHOUSE

Structures identified as preliminarily eligible require additional on-site assessment and must meet certain criteria in order to participate in the nonstructural project. More information about the general nonstructural process can be found in Appendix L. Additional details concerning eligibility criteria will be developed during the design and construction phases.

541



Structure Inventory: Data on study area structures were collected in 2012 via visual assessment.

Imagery: Louisiana NAIP Imagery 2013



Southwest Coastal NED Plan

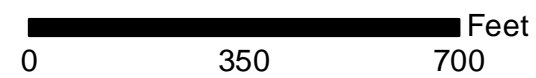
531



PROJECT STRUCTURES

- RESIDENTIAL
- NON-RESIDENTIAL
- WAREHOUSE

Structures identified as preliminarily eligible require additional on-site assessment and must meet certain criteria in order to participate in the nonstructural project. More information about the general nonstructural process can be found in Appendix L. Additional details concerning eligibility criteria will be developed during the design and construction phases.



Structure Inventory: Data on study area structures were collected in 2012 via visual assessment.

Imagery: Louisiana NAIP Imagery 2013



Southwest Coastal NED Plan

547

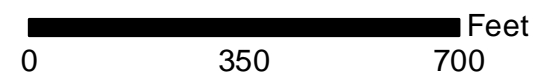


485

PROJECT STRUCTURES

- RESIDENTIAL
- NON-RESIDENTIAL
- WAREHOUSE

Structures identified as preliminarily eligible require additional on-site assessment and must meet certain criteria in order to participate in the nonstructural project. More information about the general nonstructural process can be found in Appendix L. Additional details concerning eligibility criteria will be developed during the design and construction phases.



Structure Inventory: Data on study area structures were collected in 2012 via visual assessment.

Imagery: Louisiana NAIP Imagery 2013



Southwest Coastal NED Plan



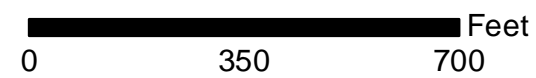
484

486

PROJECT STRUCTURES

- RESIDENTIAL
- NON-RESIDENTIAL
- WAREHOUSE

Structures identified as preliminarily eligible require additional on-site assessment and must meet certain criteria in order to participate in the nonstructural project. More information about the general nonstructural process can be found in Appendix L. Additional details concerning eligibility criteria will be developed during the design and construction phases.



Structure Inventory: Data on study area structures were collected in 2012 via visual assessment.

Imagery: Louisiana NAIP Imagery 2013



Southwest Coastal NED Plan

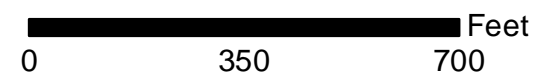


485

PROJECT STRUCTURES

- RESIDENTIAL
- NON-RESIDENTIAL
- WAREHOUSE

Structures identified as preliminarily eligible require additional on-site assessment and must meet certain criteria in order to participate in the nonstructural project. More information about the general nonstructural process can be found in Appendix L. Additional details concerning eligibility criteria will be developed during the design and construction phases.



Structure Inventory: Data on study area structures were collected in 2012 via visual assessment.

Imagery: Louisiana NAIP Imagery 2013



Southwest Coastal NED Plan

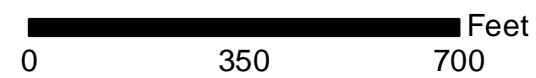


488

PROJECT STRUCTURES

- RESIDENTIAL
- NON-RESIDENTIAL
- WAREHOUSE

Structures identified as preliminarily eligible require additional on-site assessment and must meet certain criteria in order to participate in the nonstructural project. More information about the general nonstructural process can be found in Appendix L. Additional details concerning eligibility criteria will be developed during the design and construction phases.



Structure Inventory: Data on study area structures were collected in 2012 via visual assessment.

Imagery: Louisiana NAIP Imagery 2013



Southwest Coastal NED Plan

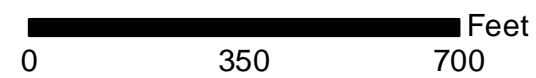


487

PROJECT STRUCTURES

- RESIDENTIAL
- NON-RESIDENTIAL
- WAREHOUSE

Structures identified as preliminarily eligible require additional on-site assessment and must meet certain criteria in order to participate in the nonstructural project. More information about the general nonstructural process can be found in Appendix L. Additional details concerning eligibility criteria will be developed during the design and construction phases.



Structure Inventory: Data on study area structures were collected in 2012 via visual assessment.

Imagery: Louisiana NAIP Imagery 2013



Southwest Coastal NED Plan



PROJECT STRUCTURES

- RESIDENTIAL
- NON-RESIDENTIAL
- WAREHOUSE

Structures identified as preliminarily eligible require additional on-site assessment and must meet certain criteria in order to participate in the nonstructural project. More information about the general nonstructural process can be found in Appendix L. Additional details concerning eligibility criteria will be developed during the design and construction phases.



Structure Inventory: Data on study area structures were collected in 2012 via visual assessment.

Imagery: Louisiana NAIP Imagery 2013



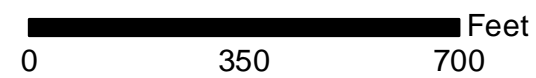
Southwest Coastal NED Plan



PROJECT STRUCTURES

- RESIDENTIAL
- NON-RESIDENTIAL
- WAREHOUSE

Structures identified as preliminarily eligible require additional on-site assessment and must meet certain criteria in order to participate in the nonstructural project. More information about the general nonstructural process can be found in Appendix L. Additional details concerning eligibility criteria will be developed during the design and construction phases.



Structure Inventory: Data on study area structures were collected in 2012 via visual assessment.

Imagery: Louisiana NAIP Imagery 2013



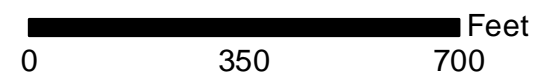
Southwest Coastal NED Plan



PROJECT STRUCTURES

- RESIDENTIAL
- NON-RESIDENTIAL
- WAREHOUSE

Structures identified as preliminarily eligible require additional on-site assessment and must meet certain criteria in order to participate in the nonstructural project. More information about the general nonstructural process can be found in Appendix L. Additional details concerning eligibility criteria will be developed during the design and construction phases.



Structure Inventory: Data on study area structures were collected in 2012 via visual assessment.

Imagery: Louisiana NAIP Imagery 2013



Southwest Coastal NED Plan

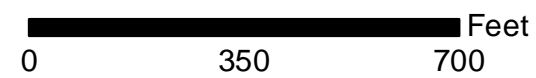


493

PROJECT STRUCTURES

- RESIDENTIAL
- NON-RESIDENTIAL
- WAREHOUSE

Structures identified as preliminarily eligible require additional on-site assessment and must meet certain criteria in order to participate in the nonstructural project. More information about the general nonstructural process can be found in Appendix L. Additional details concerning eligibility criteria will be developed during the design and construction phases.



Structure Inventory: Data on study area structures were collected in 2012 via visual assessment.

Imagery: Louisiana NAIP Imagery 2013



Southwest Coastal NED Plan

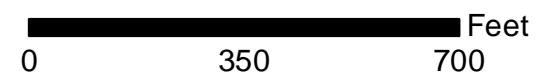


492

PROJECT STRUCTURES

- RESIDENTIAL
- NON-RESIDENTIAL
- WAREHOUSE

Structures identified as preliminarily eligible require additional on-site assessment and must meet certain criteria in order to participate in the nonstructural project. More information about the general nonstructural process can be found in Appendix L. Additional details concerning eligibility criteria will be developed during the design and construction phases.



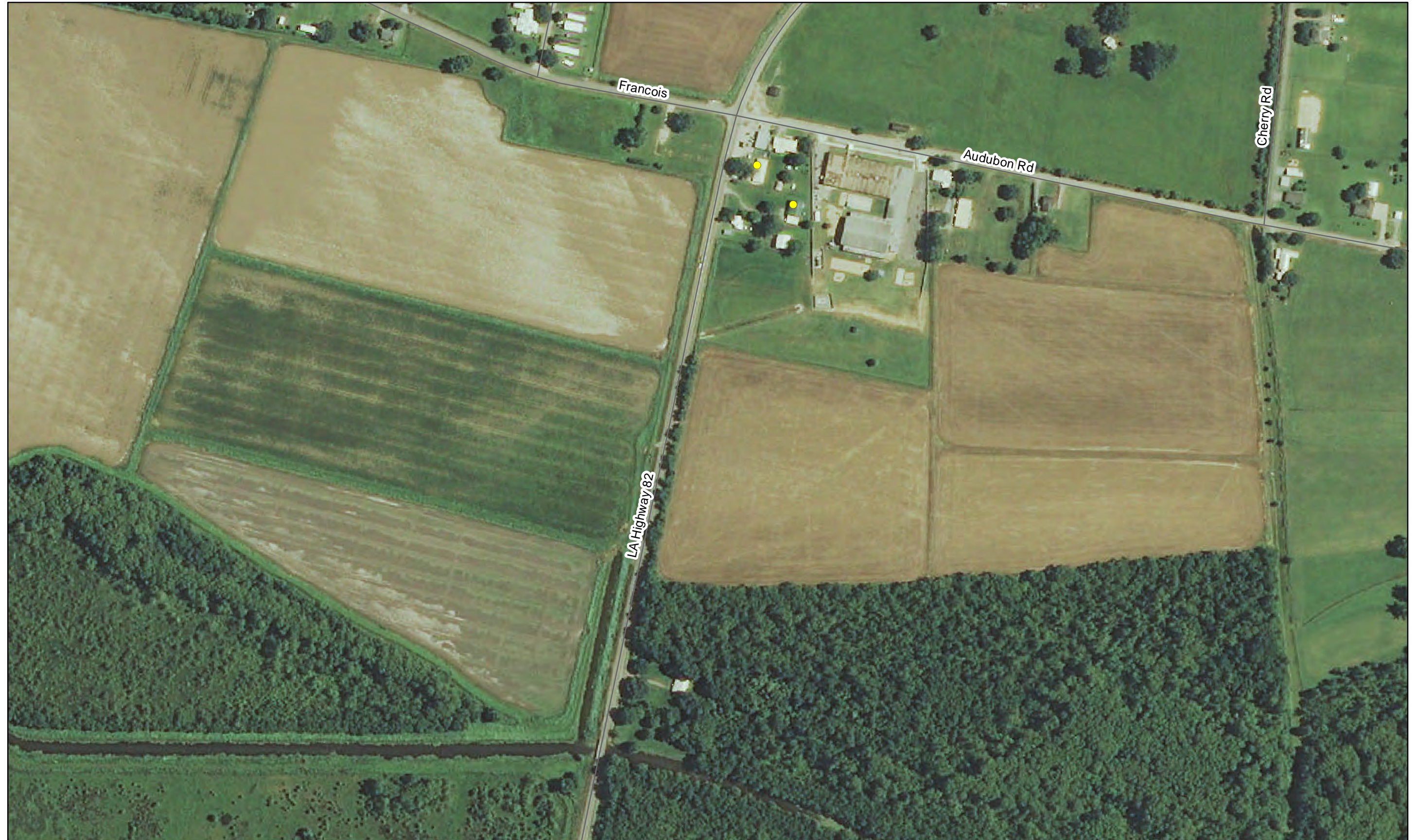
Structure Inventory: Data on study area structures were collected in 2012 via visual assessment.

Imagery: Louisiana NAIP Imagery 2013



Southwest Coastal NED Plan

480



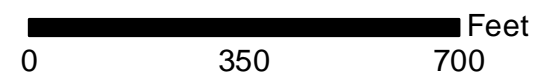
495

PROJECT STRUCTURES

- RESIDENTIAL
- NON-RESIDENTIAL
- WAREHOUSE

Structures identified as preliminarily eligible require additional on-site assessment and must meet certain criteria in order to participate in the nonstructural project. More information about the general nonstructural process can be found in Appendix L. Additional details concerning eligibility criteria will be developed during the design and construction phases.

498



Structure Inventory: Data on study area structures were collected in 2012 via visual assessment.

Imagery: Louisiana NAIP Imagery 2013



Southwest Coastal NED Plan

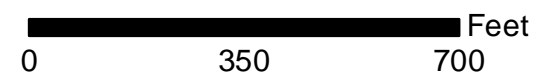


494

PROJECT STRUCTURES

- RESIDENTIAL
- NON-RESIDENTIAL
- WAREHOUSE

Structures identified as preliminarily eligible require additional on-site assessment and must meet certain criteria in order to participate in the nonstructural project. More information about the general nonstructural process can be found in Appendix L. Additional details concerning eligibility criteria will be developed during the design and construction phases.



Structure Inventory: Data on study area structures were collected in 2012 via visual assessment.

Imagery: Louisiana NAIP Imagery 2013



Southwest Coastal NED Plan



PROJECT STRUCTURES

- RESIDENTIAL
- NON-RESIDENTIAL
- WAREHOUSE

Structures identified as preliminarily eligible require additional on-site assessment and must meet certain criteria in order to participate in the nonstructural project. More information about the general nonstructural process can be found in Appendix L. Additional details concerning eligibility criteria will be developed during the design and construction phases.

0 350 700 Feet

Structure Inventory: Data on study area structures were collected in 2012 via visual assessment.

Imagery: Louisiana NAIP Imagery 2013



Southwest Coastal NED Plan



PROJECT STRUCTURES

- RESIDENTIAL
- NON-RESIDENTIAL
- WAREHOUSE

Structures identified as preliminarily eligible require additional on-site assessment and must meet certain criteria in order to participate in the nonstructural project. More information about the general nonstructural process can be found in Appendix L. Additional details concerning eligibility criteria will be developed during the design and construction phases.

0 350 700 Feet

Structure Inventory: Data on study area structures were collected in 2012 via visual assessment.

Imagery: Louisiana NAIP Imagery 2013



Southwest Coastal NED Plan

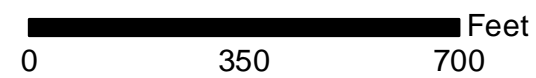
494



PROJECT STRUCTURES

- RESIDENTIAL
- NON-RESIDENTIAL
- WAREHOUSE

Structures identified as preliminarily eligible require additional on-site assessment and must meet certain criteria in order to participate in the nonstructural project. More information about the general nonstructural process can be found in Appendix L. Additional details concerning eligibility criteria will be developed during the design and construction phases.



Structure Inventory: Data on study area structures were collected in 2012 via visual assessment.

Imagery: Louisiana NAIP Imagery 2013



Southwest Coastal NED Plan



PROJECT STRUCTURES

- RESIDENTIAL
- NON-RESIDENTIAL
- WAREHOUSE

Structures identified as preliminarily eligible require additional on-site assessment and must meet certain criteria in order to participate in the nonstructural project. More information about the general nonstructural process can be found in Appendix L. Additional details concerning eligibility criteria will be developed during the design and construction phases.

0 350 700 Feet

Structure Inventory: Data on study area structures were collected in 2012 via visual assessment.

Imagery: Louisiana NAIP Imagery 2013



Southwest Coastal NED Plan

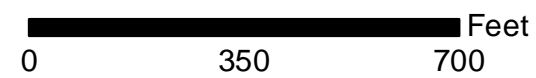


PROJECT STRUCTURES

- RESIDENTIAL
- NON-RESIDENTIAL
- WAREHOUSE

Structures identified as preliminarily eligible require additional on-site assessment and must meet certain criteria in order to participate in the nonstructural project. More information about the general nonstructural process can be found in Appendix L. Additional details concerning eligibility criteria will be developed during the design and construction phases.

506



Structure Inventory: Data on study area structures were collected in 2012 via visual assessment.

Imagery: Louisiana NAIP Imagery 2013

