

Southwest Coastal NED Plan



PROJECT STRUCTURES

- RESIDENTIAL
- NON-RESIDENTIAL
- WAREHOUSE

Structures identified as preliminarily eligible require additional on-site assessment and must meet certain criteria in order to participate in the nonstructural project. More information about the general nonstructural process can be found in Appendix L. Additional details concerning eligibility criteria will be developed during the design and construction phases.

0 350 700 Feet

Structure Inventory: Data on study area structures were collected in 2012 via visual assessment.

Imagery: Louisiana NAIP Imagery 2013



Southwest Coastal NED Plan



303

PROJECT STRUCTURES

- RESIDENTIAL
- NON-RESIDENTIAL
- WAREHOUSE

Structures identified as preliminarily eligible require additional on-site assessment and must meet certain criteria in order to participate in the nonstructural project. More information about the general nonstructural process can be found in Appendix L. Additional details concerning eligibility criteria will be developed during the design and construction phases.



Structure Inventory: Data on study area structures were collected in 2012 via visual assessment.

Imagery: Louisiana NAIP Imagery 2013



Southwest Coastal NED Plan

290



302

304

PROJECT STRUCTURES

- RESIDENTIAL
- NON-RESIDENTIAL
- WAREHOUSE

Structures identified as preliminarily eligible require additional on-site assessment and must meet certain criteria in order to participate in the nonstructural project. More information about the general nonstructural process can be found in Appendix L. Additional details concerning eligibility criteria will be developed during the design and construction phases.



Structure Inventory: Data on study area structures were collected in 2012 via visual assessment.

Imagery: Louisiana NAIP Imagery 2013



Southwest Coastal NED Plan



303

305

PROJECT STRUCTURES

- RESIDENTIAL
- NON-RESIDENTIAL
- WAREHOUSE

Structures identified as preliminarily eligible require additional on-site assessment and must meet certain criteria in order to participate in the nonstructural project. More information about the general nonstructural process can be found in Appendix L. Additional details concerning eligibility criteria will be developed during the design and construction phases.



Structure Inventory: Data on study area structures were collected in 2012 via visual assessment.

Imagery: Louisiana NAIP Imagery 2013



Southwest Coastal NED Plan



304

306

312

PROJECT STRUCTURES

- RESIDENTIAL
- NON-RESIDENTIAL
- WAREHOUSE

Structures identified as preliminarily eligible require additional on-site assessment and must meet certain criteria in order to participate in the nonstructural project. More information about the general nonstructural process can be found in Appendix L. Additional details concerning eligibility criteria will be developed during the design and construction phases.



Structure Inventory: Data on study area structures were collected in 2012 via visual assessment.

Imagery: Louisiana NAIP Imagery 2013



Southwest Coastal NED Plan

291



305

313

PROJECT STRUCTURES

- RESIDENTIAL
- NON-RESIDENTIAL
- WAREHOUSE

Structures identified as preliminarily eligible require additional on-site assessment and must meet certain criteria in order to participate in the nonstructural project. More information about the general nonstructural process can be found in Appendix L. Additional details concerning eligibility criteria will be developed during the design and construction phases.



Structure Inventory: Data on study area structures were collected in 2012 via visual assessment.

Imagery: Louisiana NAIP Imagery 2013



Southwest Coastal NED Plan

292



PROJECT STRUCTURES

- RESIDENTIAL
- NON-RESIDENTIAL
- WAREHOUSE

Structures identified as preliminarily eligible require additional on-site assessment and must meet certain criteria in order to participate in the nonstructural project. More information about the general nonstructural process can be found in Appendix L. Additional details concerning eligibility criteria will be developed during the design and construction phases.

316

0 350 700 Feet

Structure Inventory: Data on study area structures were collected in 2012 via visual assessment.

Imagery: Louisiana NAIP Imagery 2013



Southwest Coastal NED Plan

295



309

PROJECT STRUCTURES

- RESIDENTIAL
- NON-RESIDENTIAL
- WAREHOUSE

Structures identified as preliminarily eligible require additional on-site assessment and must meet certain criteria in order to participate in the nonstructural project. More information about the general nonstructural process can be found in Appendix L. Additional details concerning eligibility criteria will be developed during the design and construction phases.

320



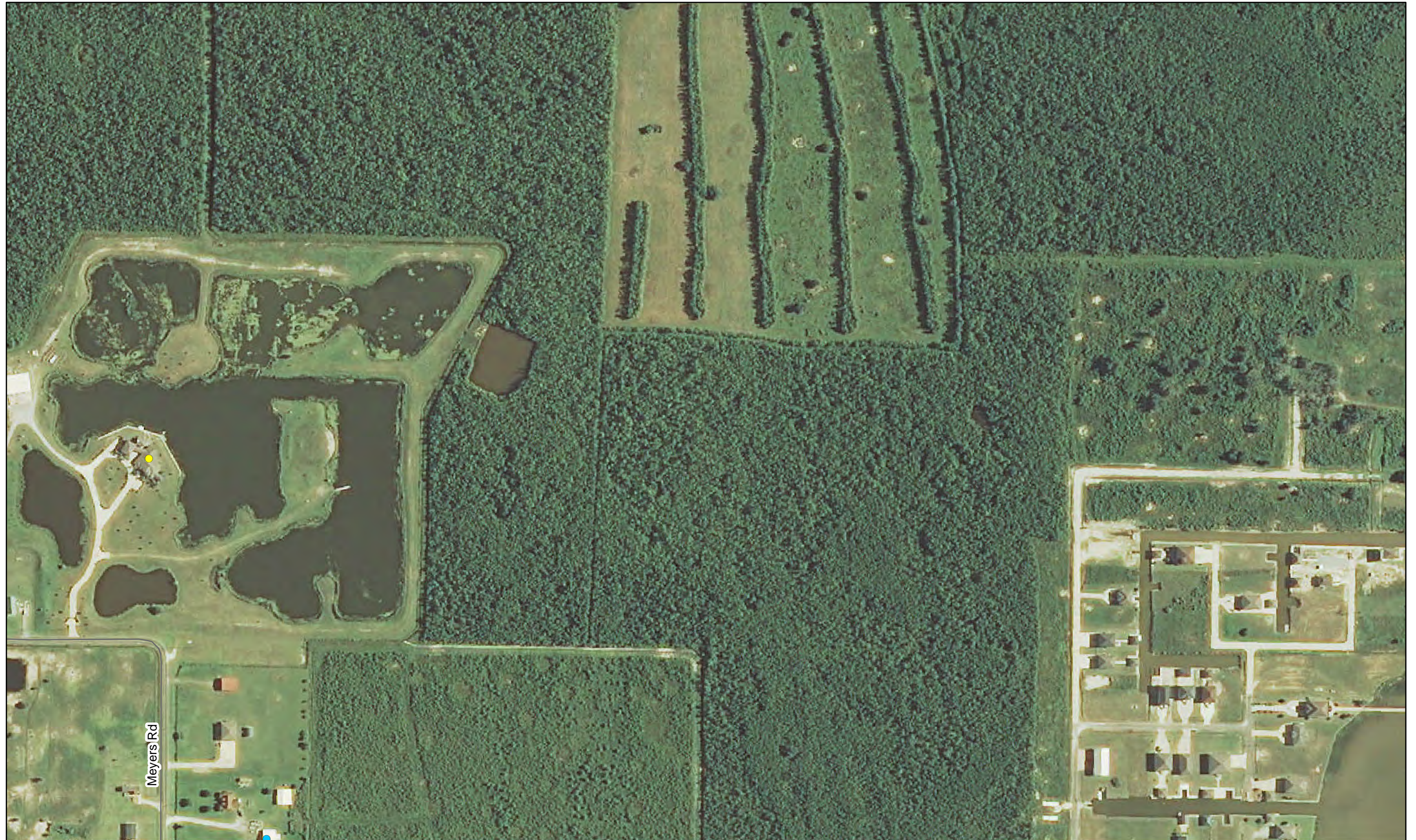
Structure Inventory: Data on study area structures were collected in 2012 via visual assessment.

Imagery: Louisiana NAIP Imagery 2013



Southwest Coastal NED Plan

308



PROJECT STRUCTURES

- RESIDENTIAL
- NON-RESIDENTIAL
- WAREHOUSE

Structures identified as preliminarily eligible require additional on-site assessment and must meet certain criteria in order to participate in the nonstructural project. More information about the general nonstructural process can be found in Appendix L. Additional details concerning eligibility criteria will be developed during the design and construction phases.

321



Structure Inventory: Data on study area structures were collected in 2012 via visual assessment.

Imagery: Louisiana NAIP Imagery 2013



Southwest Coastal NED Plan

297



PROJECT STRUCTURES

- RESIDENTIAL
- NON-RESIDENTIAL
- WAREHOUSE

Structures identified as preliminarily eligible require additional on-site assessment and must meet certain criteria in order to participate in the nonstructural project. More information about the general nonstructural process can be found in Appendix L. Additional details concerning eligibility criteria will be developed during the design and construction phases.

0 350 700 Feet

Structure Inventory: Data on study area structures were collected in 2012 via visual assessment.

Imagery: Louisiana NAIP Imagery 2013



Southwest Coastal NED Plan



PROJECT STRUCTURES

- RESIDENTIAL
- NON-RESIDENTIAL
- WAREHOUSE

Structures identified as preliminarily eligible require additional on-site assessment and must meet certain criteria in order to participate in the nonstructural project. More information about the general nonstructural process can be found in Appendix L. Additional details concerning eligibility criteria will be developed during the design and construction phases.



Structure Inventory: Data on study area structures were collected in 2012 via visual assessment.

Imagery: Louisiana NAIP Imagery 2013



Southwest Coastal NED Plan

305



313

PROJECT STRUCTURES

- RESIDENTIAL
- NON-RESIDENTIAL
- WAREHOUSE

Structures identified as preliminarily eligible require additional on-site assessment and must meet certain criteria in order to participate in the nonstructural project. More information about the general nonstructural process can be found in Appendix L. Additional details concerning eligibility criteria will be developed during the design and construction phases.

325



Structure Inventory: Data on study area structures were collected in 2012 via visual assessment.

Imagery: Louisiana NAIP Imagery 2013



Southwest Coastal NED Plan

306



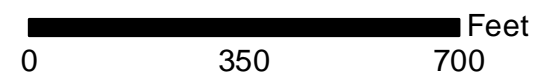
312

PROJECT STRUCTURES

- RESIDENTIAL
- NON-RESIDENTIAL
- WAREHOUSE

Structures identified as preliminarily eligible require additional on-site assessment and must meet certain criteria in order to participate in the nonstructural project. More information about the general nonstructural process can be found in Appendix L. Additional details concerning eligibility criteria will be developed during the design and construction phases.

326



Structure Inventory: Data on study area structures were collected in 2012 via visual assessment.

Imagery: Louisiana NAIP Imagery 2013



Southwest Coastal NED Plan



315

PROJECT STRUCTURES

- RESIDENTIAL
- NON-RESIDENTIAL
- WAREHOUSE

Structures identified as preliminarily eligible require additional on-site assessment and must meet certain criteria in order to participate in the nonstructural project. More information about the general nonstructural process can be found in Appendix L. Additional details concerning eligibility criteria will be developed during the design and construction phases.

0 350 700 Feet

Structure Inventory: Data on study area structures were collected in 2012 via visual assessment.

Imagery: Louisiana NAIP Imagery 2013

Page 314 of 568



Southwest Coastal NED Plan



314

316

Highway 332

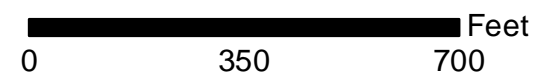
Scanlan Rd

329

PROJECT STRUCTURES

- RESIDENTIAL
- NON-RESIDENTIAL
- WAREHOUSE

Structures identified as preliminarily eligible require additional on-site assessment and must meet certain criteria in order to participate in the nonstructural project. More information about the general nonstructural process can be found in Appendix L. Additional details concerning eligibility criteria will be developed during the design and construction phases.



Structure Inventory: Data on study area structures were collected in 2012 via visual assessment.

Imagery: Louisiana NAIP Imagery 2013



Southwest Coastal NED Plan

307



315

317

PROJECT STRUCTURES

- RESIDENTIAL
- NON-RESIDENTIAL
- WAREHOUSE

Structures identified as preliminarily eligible require additional on-site assessment and must meet certain criteria in order to participate in the nonstructural project. More information about the general nonstructural process can be found in Appendix L. Additional details concerning eligibility criteria will be developed during the design and construction phases.



Structure Inventory: Data on study area structures were collected in 2012 via visual assessment.

Imagery: Louisiana NAIP Imagery 2013



Southwest Coastal NED Plan



316

318

PROJECT STRUCTURES

- RESIDENTIAL
- NON-RESIDENTIAL
- WAREHOUSE

Structures identified as preliminarily eligible require additional on-site assessment and must meet certain criteria in order to participate in the nonstructural project. More information about the general nonstructural process can be found in Appendix L. Additional details concerning eligibility criteria will be developed during the design and construction phases.

330



Structure Inventory: Data on study area structures were collected in 2012 via visual assessment.

Imagery: Louisiana NAIP Imagery 2013



Southwest Coastal NED Plan

317



PROJECT STRUCTURES

- RESIDENTIAL
- NON-RESIDENTIAL
- WAREHOUSE

Structures identified as preliminarily eligible require additional on-site assessment and must meet certain criteria in order to participate in the nonstructural project. More information about the general nonstructural process can be found in Appendix L. Additional details concerning eligibility criteria will be developed during the design and construction phases.



Structure Inventory: Data on study area structures were collected in 2012 via visual assessment.

Imagery: Louisiana NAIP Imagery 2013



Southwest Coastal NED Plan



320

PROJECT STRUCTURES

- RESIDENTIAL
- NON-RESIDENTIAL
- WAREHOUSE

Structures identified as preliminarily eligible require additional on-site assessment and must meet certain criteria in order to participate in the nonstructural project. More information about the general nonstructural process can be found in Appendix L. Additional details concerning eligibility criteria will be developed during the design and construction phases.



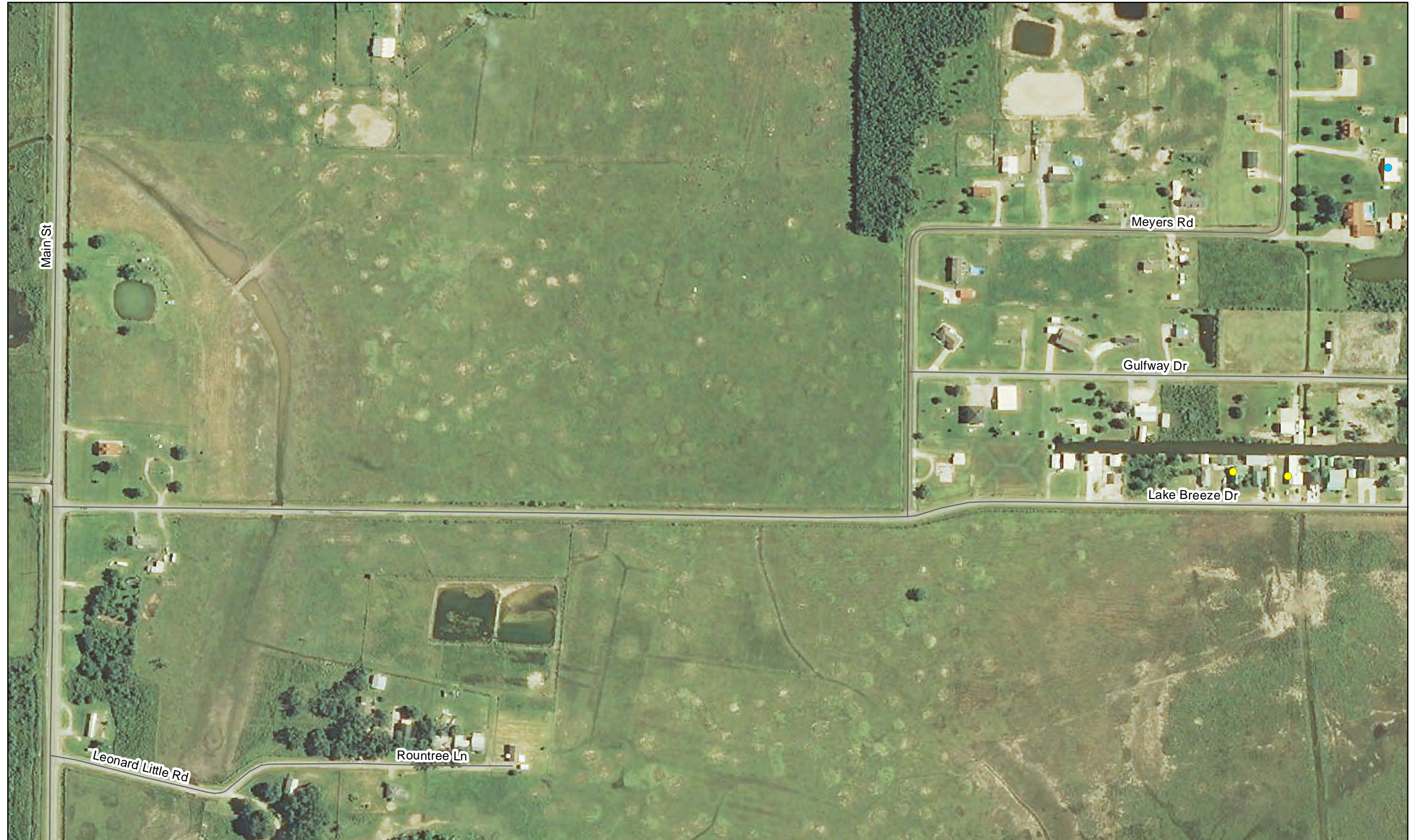
Structure Inventory: Data on study area structures were collected in 2012 via visual assessment.

Imagery: Louisiana NAIP Imagery 2013



Southwest Coastal NED Plan

308



319

321

PROJECT STRUCTURES

- RESIDENTIAL
- NON-RESIDENTIAL
- WAREHOUSE

Structures identified as preliminarily eligible require additional on-site assessment and must meet certain criteria in order to participate in the nonstructural project. More information about the general nonstructural process can be found in Appendix L. Additional details concerning eligibility criteria will be developed during the design and construction phases.



Structure Inventory: Data on study area structures were collected in 2012 via visual assessment.

Imagery: Louisiana NAIP Imagery 2013



Southwest Coastal NED Plan

309



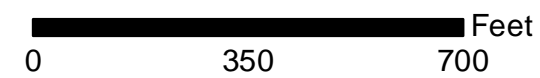
320

332

PROJECT STRUCTURES

- RESIDENTIAL
- NON-RESIDENTIAL
- WAREHOUSE

Structures identified as preliminarily eligible require additional on-site assessment and must meet certain criteria in order to participate in the nonstructural project. More information about the general nonstructural process can be found in Appendix L. Additional details concerning eligibility criteria will be developed during the design and construction phases.



Structure Inventory: Data on study area structures were collected in 2012 via visual assessment.

Imagery: Louisiana NAIP Imagery 2013



Southwest Coastal NED Plan



PROJECT STRUCTURES

- RESIDENTIAL
- NON-RESIDENTIAL
- WAREHOUSE

Structures identified as preliminarily eligible require additional on-site assessment and must meet certain criteria in order to participate in the nonstructural project. More information about the general nonstructural process can be found in Appendix L. Additional details concerning eligibility criteria will be developed during the design and construction phases.



Structure Inventory: Data on study area structures were collected in 2012 via visual assessment.

Imagery: Louisiana NAIP Imagery 2013



Southwest Coastal NED Plan



324

PROJECT STRUCTURES

- RESIDENTIAL
- NON-RESIDENTIAL
- WAREHOUSE

Structures identified as preliminarily eligible require additional on-site assessment and must meet certain criteria in order to participate in the nonstructural project. More information about the general nonstructural process can be found in Appendix L. Additional details concerning eligibility criteria will be developed during the design and construction phases.



Structure Inventory: Data on study area structures were collected in 2012 via visual assessment.

Imagery: Louisiana NAIP Imagery 2013



Southwest Coastal NED Plan



323

PROJECT STRUCTURES	
●	RESIDENTIAL
●	NON-RESIDENTIAL
●	WAREHOUSE

Structures identified as preliminarily eligible require additional on-site assessment and must meet certain criteria in order to participate in the nonstructural project. More information about the general nonstructural process can be found in Appendix L. Additional details concerning eligibility criteria will be developed during the design and construction phases.



Structure Inventory: Data on study area structures were collected in 2012 via visual assessment.

Imagery: Louisiana NAIP Imagery 2013



Southwest Coastal NED Plan

312



326

PROJECT STRUCTURES

- RESIDENTIAL
- NON-RESIDENTIAL
- WAREHOUSE

Structures identified as preliminarily eligible require additional on-site assessment and must meet certain criteria in order to participate in the nonstructural project. More information about the general nonstructural process can be found in Appendix L. Additional details concerning eligibility criteria will be developed during the design and construction phases.

0 350 700 Feet

Structure Inventory: Data on study area structures were collected in 2012 via visual assessment.

Imagery: Louisiana NAIP Imagery 2013

Page 325 of 568



Southwest Coastal NED Plan

313



325

327

PROJECT STRUCTURES

- RESIDENTIAL
- NON-RESIDENTIAL
- WAREHOUSE

Structures identified as preliminarily eligible require additional on-site assessment and must meet certain criteria in order to participate in the nonstructural project. More information about the general nonstructural process can be found in Appendix L. Additional details concerning eligibility criteria will be developed during the design and construction phases.



Structure Inventory: Data on study area structures were collected in 2012 via visual assessment.

Imagery: Louisiana NAIP Imagery 2013



Southwest Coastal NED Plan



326

328

334

PROJECT STRUCTURES

- RESIDENTIAL
- NON-RESIDENTIAL
- WAREHOUSE

Structures identified as preliminarily eligible require additional on-site assessment and must meet certain criteria in order to participate in the nonstructural project. More information about the general nonstructural process can be found in Appendix L. Additional details concerning eligibility criteria will be developed during the design and construction phases.



Structure Inventory: Data on study area structures were collected in 2012 via visual assessment.

Imagery: Louisiana NAIP Imagery 2013



Southwest Coastal NED Plan

327



PROJECT STRUCTURES

- RESIDENTIAL
- NON-RESIDENTIAL
- WAREHOUSE

Structures identified as preliminarily eligible require additional on-site assessment and must meet certain criteria in order to participate in the nonstructural project. More information about the general nonstructural process can be found in Appendix L. Additional details concerning eligibility criteria will be developed during the design and construction phases.

335



Structure Inventory: Data on study area structures were collected in 2012 via visual assessment.

Imagery: Louisiana NAIP Imagery 2013



Southwest Coastal NED Plan

315



PROJECT STRUCTURES

- RESIDENTIAL
- NON-RESIDENTIAL
- WAREHOUSE

Structures identified as preliminarily eligible require additional on-site assessment and must meet certain criteria in order to participate in the nonstructural project. More information about the general nonstructural process can be found in Appendix L. Additional details concerning eligibility criteria will be developed during the design and construction phases.

0 350 700 Feet

Structure Inventory: Data on study area structures were collected in 2012 via visual assessment.

Imagery: Louisiana NAIP Imagery 2013



Southwest Coastal NED Plan

317



PROJECT STRUCTURES

- RESIDENTIAL
- NON-RESIDENTIAL
- WAREHOUSE

Structures identified as preliminarily eligible require additional on-site assessment and must meet certain criteria in order to participate in the nonstructural project. More information about the general nonstructural process can be found in Appendix L. Additional details concerning eligibility criteria will be developed during the design and construction phases.

336



Structure Inventory: Data on study area structures were collected in 2012 via visual assessment.

Imagery: Louisiana NAIP Imagery 2013



Southwest Coastal NED Plan



PROJECT STRUCTURES

- RESIDENTIAL
- NON-RESIDENTIAL
- WAREHOUSE

Structures identified as preliminarily eligible require additional on-site assessment and must meet certain criteria in order to participate in the nonstructural project. More information about the general nonstructural process can be found in Appendix L. Additional details concerning eligibility criteria will be developed during the design and construction phases.



Structure Inventory: Data on study area structures were collected in 2012 via visual assessment.

Imagery: Louisiana NAIP Imagery 2013



Southwest Coastal NED Plan

321



PROJECT STRUCTURES

- RESIDENTIAL
- NON-RESIDENTIAL
- WAREHOUSE

Structures identified as preliminarily eligible require additional on-site assessment and must meet certain criteria in order to participate in the nonstructural project. More information about the general nonstructural process can be found in Appendix L. Additional details concerning eligibility criteria will be developed during the design and construction phases.

341



Structure Inventory: Data on study area structures were collected in 2012 via visual assessment.

Imagery: Louisiana NAIP Imagery 2013



Southwest Coastal NED Plan



PROJECT STRUCTURES

- RESIDENTIAL
- NON-RESIDENTIAL
- WAREHOUSE

Structures identified as preliminarily eligible require additional on-site assessment and must meet certain criteria in order to participate in the nonstructural project. More information about the general nonstructural process can be found in Appendix L. Additional details concerning eligibility criteria will be developed during the design and construction phases.

0 350 700 Feet

Structure Inventory: Data on study area structures were collected in 2012 via visual assessment.

Imagery: Louisiana NAIP Imagery 2013



Southwest Coastal NED Plan

327



335

PROJECT STRUCTURES

- RESIDENTIAL
- NON-RESIDENTIAL
- WAREHOUSE

Structures identified as preliminarily eligible require additional on-site assessment and must meet certain criteria in order to participate in the nonstructural project. More information about the general nonstructural process can be found in Appendix L. Additional details concerning eligibility criteria will be developed during the design and construction phases.



Structure Inventory: Data on study area structures were collected in 2012 via visual assessment.

Imagery: Louisiana NAIP Imagery 2013



Southwest Coastal NED Plan

328



334

PROJECT STRUCTURES

- RESIDENTIAL
- NON-RESIDENTIAL
- WAREHOUSE

Structures identified as preliminarily eligible require additional on-site assessment and must meet certain criteria in order to participate in the nonstructural project. More information about the general nonstructural process can be found in Appendix L. Additional details concerning eligibility criteria will be developed during the design and construction phases.



Structure Inventory: Data on study area structures were collected in 2012 via visual assessment.

Imagery: Louisiana NAIP Imagery 2013



Southwest Coastal NED Plan

330



PROJECT STRUCTURES

- RESIDENTIAL
- NON-RESIDENTIAL
- WAREHOUSE

Structures identified as preliminarily eligible require additional on-site assessment and must meet certain criteria in order to participate in the nonstructural project. More information about the general nonstructural process can be found in Appendix L. Additional details concerning eligibility criteria will be developed during the design and construction phases.

345

0 350 700 Feet

Structure Inventory: Data on study area structures were collected in 2012 via visual assessment.

Imagery: Louisiana NAIP Imagery 2013



Southwest Coastal NED Plan



PROJECT STRUCTURES

- RESIDENTIAL
- NON-RESIDENTIAL
- WAREHOUSE

Structures identified as preliminarily eligible require additional on-site assessment and must meet certain criteria in order to participate in the nonstructural project. More information about the general nonstructural process can be found in Appendix L. Additional details concerning eligibility criteria will be developed during the design and construction phases.

349



Structure Inventory: Data on study area structures were collected in 2012 via visual assessment.

Imagery: Louisiana NAIP Imagery 2013



Southwest Coastal NED Plan



339

PROJECT STRUCTURES

- RESIDENTIAL
- NON-RESIDENTIAL
- WAREHOUSE

Structures identified as preliminarily eligible require additional on-site assessment and must meet certain criteria in order to participate in the nonstructural project. More information about the general nonstructural process can be found in Appendix L. Additional details concerning eligibility criteria will be developed during the design and construction phases.



Structure Inventory: Data on study area structures were collected in 2012 via visual assessment.

Imagery: Louisiana NAIP Imagery 2013



Southwest Coastal NED Plan



338

340

PROJECT STRUCTURES

- RESIDENTIAL
- NON-RESIDENTIAL
- WAREHOUSE

Structures identified as preliminarily eligible require additional on-site assessment and must meet certain criteria in order to participate in the nonstructural project. More information about the general nonstructural process can be found in Appendix L. Additional details concerning eligibility criteria will be developed during the design and construction phases.

350



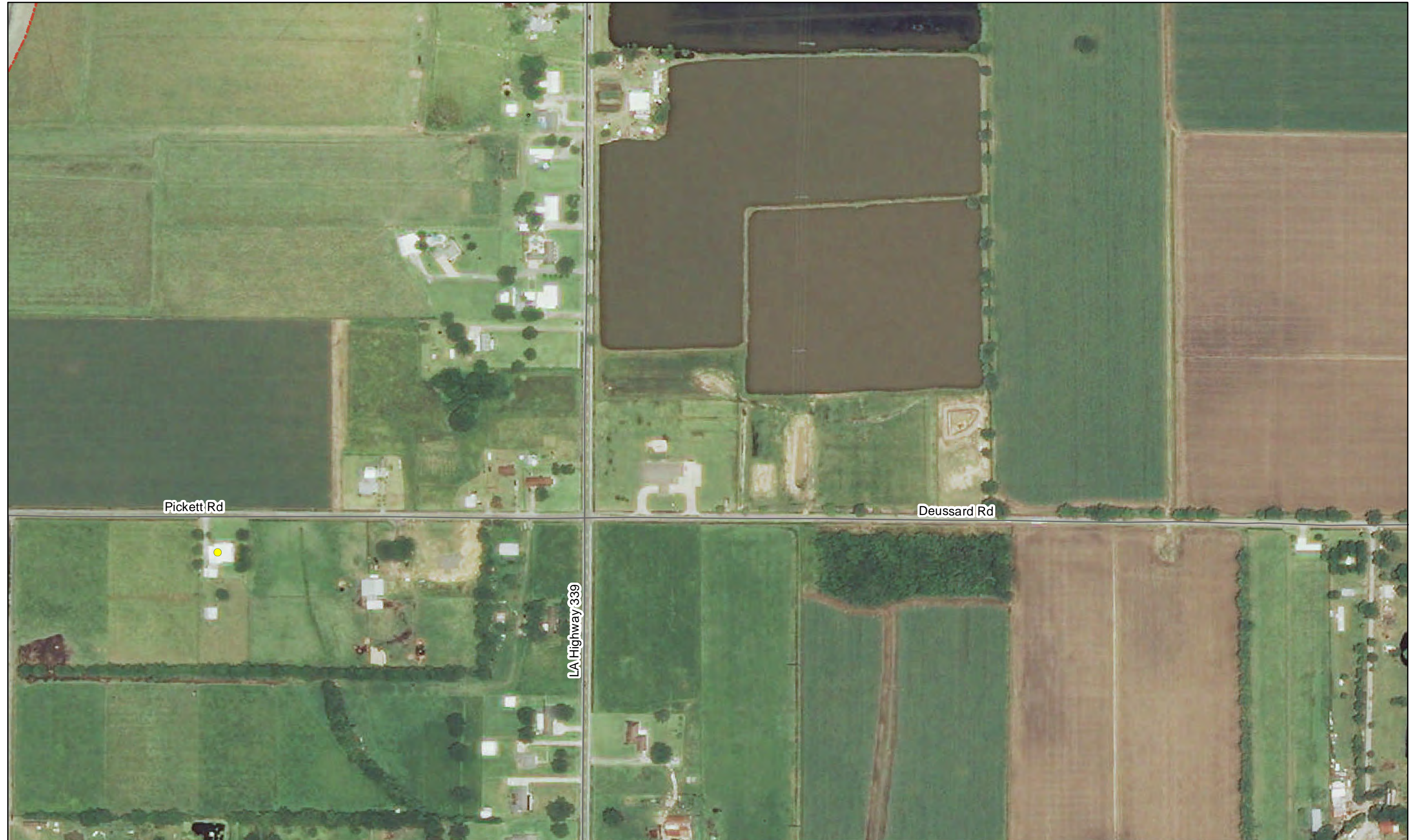
Structure Inventory: Data on study area structures were collected in 2012 via visual assessment.

Imagery: Louisiana NAIP Imagery 2013



Southwest Coastal NED Plan

339



PROJECT STRUCTURES

- RESIDENTIAL
- NON-RESIDENTIAL
- WAREHOUSE

Structures identified as preliminarily eligible require additional on-site assessment and must meet certain criteria in order to participate in the nonstructural project. More information about the general nonstructural process can be found in Appendix L. Additional details concerning eligibility criteria will be developed during the design and construction phases.

351



Structure Inventory: Data on study area structures were collected in 2012 via visual assessment.

Imagery: Louisiana NAIP Imagery 2013



Southwest Coastal NED Plan

332



PROJECT STRUCTURES

- RESIDENTIAL
- NON-RESIDENTIAL
- WAREHOUSE

Structures identified as preliminarily eligible require additional on-site assessment and must meet certain criteria in order to participate in the nonstructural project. More information about the general nonstructural process can be found in Appendix L. Additional details concerning eligibility criteria will be developed during the design and construction phases.



Structure Inventory: Data on study area structures were collected in 2012 via visual assessment.

Imagery: Louisiana NAIP Imagery 2013



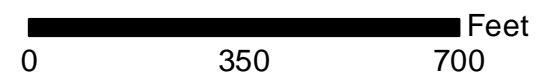
Southwest Coastal NED Plan



PROJECT STRUCTURES

- RESIDENTIAL
- NON-RESIDENTIAL
- WAREHOUSE

Structures identified as preliminarily eligible require additional on-site assessment and must meet certain criteria in order to participate in the nonstructural project. More information about the general nonstructural process can be found in Appendix L. Additional details concerning eligibility criteria will be developed during the design and construction phases.

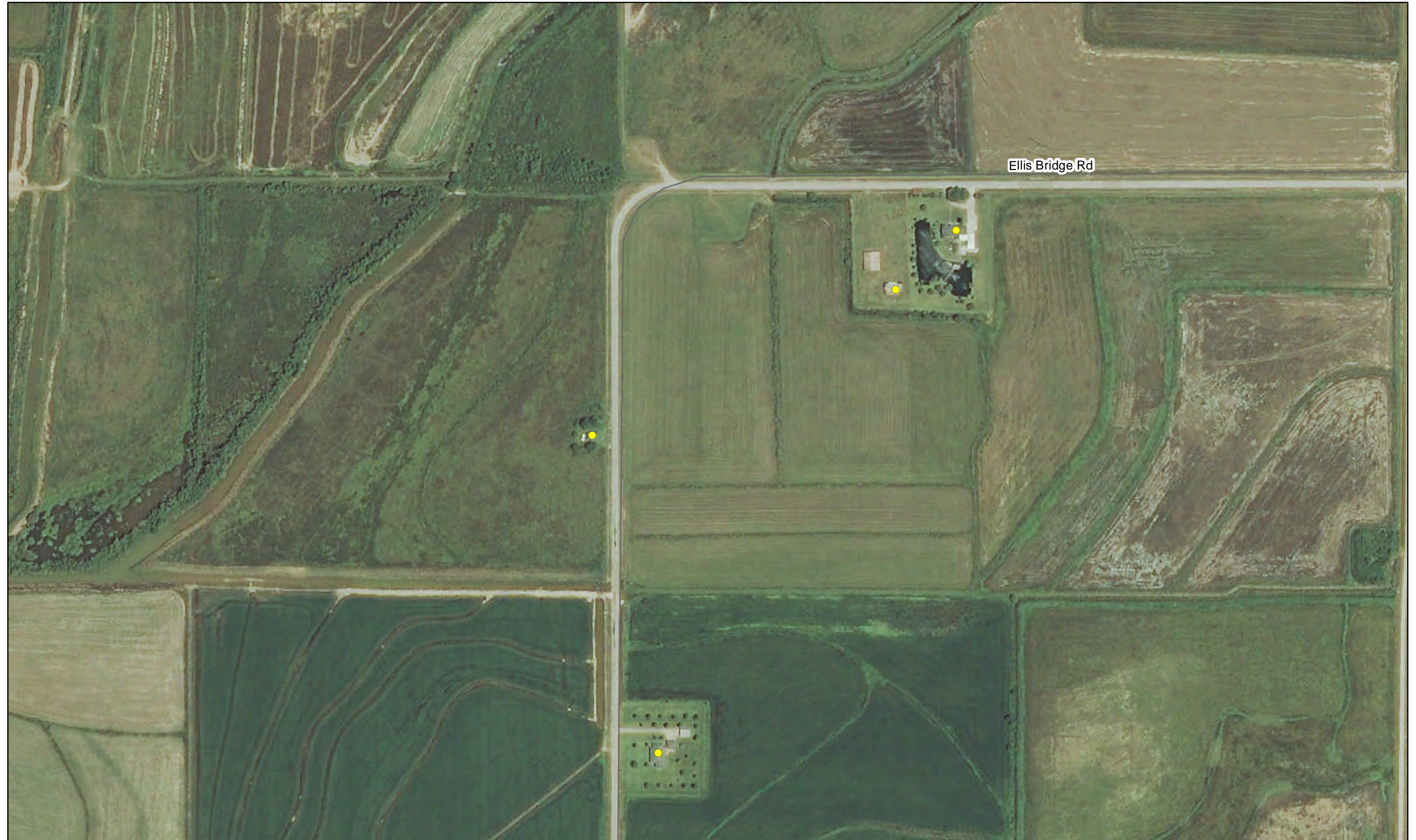


Structure Inventory: Data on study area structures were collected in 2012 via visual assessment.

Imagery: Louisiana NAIP Imagery 2013



Southwest Coastal NED Plan



344

PROJECT STRUCTURES

- RESIDENTIAL
- NON-RESIDENTIAL
- WAREHOUSE

Structures identified as preliminarily eligible require additional on-site assessment and must meet certain criteria in order to participate in the nonstructural project. More information about the general nonstructural process can be found in Appendix L. Additional details concerning eligibility criteria will be developed during the design and construction phases.

356



Structure Inventory: Data on study area structures were collected in 2012 via visual assessment.

Imagery: Louisiana NAIP Imagery 2013



Southwest Coastal NED Plan



343

PROJECT STRUCTURES

- RESIDENTIAL
- NON-RESIDENTIAL
- WAREHOUSE

Structures identified as preliminarily eligible require additional on-site assessment and must meet certain criteria in order to participate in the nonstructural project. More information about the general nonstructural process can be found in Appendix L. Additional details concerning eligibility criteria will be developed during the design and construction phases.



Structure Inventory: Data on study area structures were collected in 2012 via visual assessment.

Imagery: Louisiana NAIP Imagery 2013



Southwest Coastal NED Plan

336



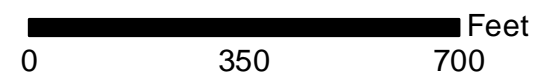
346

PROJECT STRUCTURES

- RESIDENTIAL
- NON-RESIDENTIAL
- WAREHOUSE

Structures identified as preliminarily eligible require additional on-site assessment and must meet certain criteria in order to participate in the nonstructural project. More information about the general nonstructural process can be found in Appendix L. Additional details concerning eligibility criteria will be developed during the design and construction phases.

357



Structure Inventory: Data on study area structures were collected in 2012 via visual assessment.

Imagery: Louisiana NAIP Imagery 2013



Southwest Coastal NED Plan



345

347

PROJECT STRUCTURES

- RESIDENTIAL
- NON-RESIDENTIAL
- WAREHOUSE

Structures identified as preliminarily eligible require additional on-site assessment and must meet certain criteria in order to participate in the nonstructural project. More information about the general nonstructural process can be found in Appendix L. Additional details concerning eligibility criteria will be developed during the design and construction phases.



Structure Inventory: Data on study area structures were collected in 2012 via visual assessment.

Imagery: Louisiana NAIP Imagery 2013



Southwest Coastal NED Plan



346

348

PROJECT STRUCTURES

- RESIDENTIAL
- NON-RESIDENTIAL
- WAREHOUSE

Structures identified as preliminarily eligible require additional on-site assessment and must meet certain criteria in order to participate in the nonstructural project. More information about the general nonstructural process can be found in Appendix L. Additional details concerning eligibility criteria will be developed during the design and construction phases.



Structure Inventory: Data on study area structures were collected in 2012 via visual assessment.

Imagery: Louisiana NAIP Imagery 2013



Southwest Coastal NED Plan



347

PROJECT STRUCTURES

- RESIDENTIAL
- NON-RESIDENTIAL
- WAREHOUSE

Structures identified as preliminarily eligible require additional on-site assessment and must meet certain criteria in order to participate in the nonstructural project. More information about the general nonstructural process can be found in Appendix L. Additional details concerning eligibility criteria will be developed during the design and construction phases.

0 350 700 Feet

Structure Inventory: Data on study area structures were collected in 2012 via visual assessment.

Imagery: Louisiana NAIP Imagery 2013



Southwest Coastal NED Plan

337



PROJECT STRUCTURES

- RESIDENTIAL
- NON-RESIDENTIAL
- WAREHOUSE

Structures identified as preliminarily eligible require additional on-site assessment and must meet certain criteria in order to participate in the nonstructural project. More information about the general nonstructural process can be found in Appendix L. Additional details concerning eligibility criteria will be developed during the design and construction phases.



Structure Inventory: Data on study area structures were collected in 2012 via visual assessment.

Imagery: Louisiana NAIP Imagery 2013



Southwest Coastal NED Plan

339



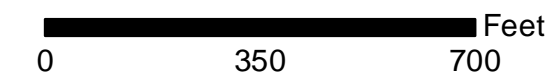
351

363

PROJECT STRUCTURES

- RESIDENTIAL
- NON-RESIDENTIAL
- WAREHOUSE

Structures identified as preliminarily eligible require additional on-site assessment and must meet certain criteria in order to participate in the nonstructural project. More information about the general nonstructural process can be found in Appendix L. Additional details concerning eligibility criteria will be developed during the design and construction phases.



Structure Inventory: Data on study area structures were collected in 2012 via visual assessment.

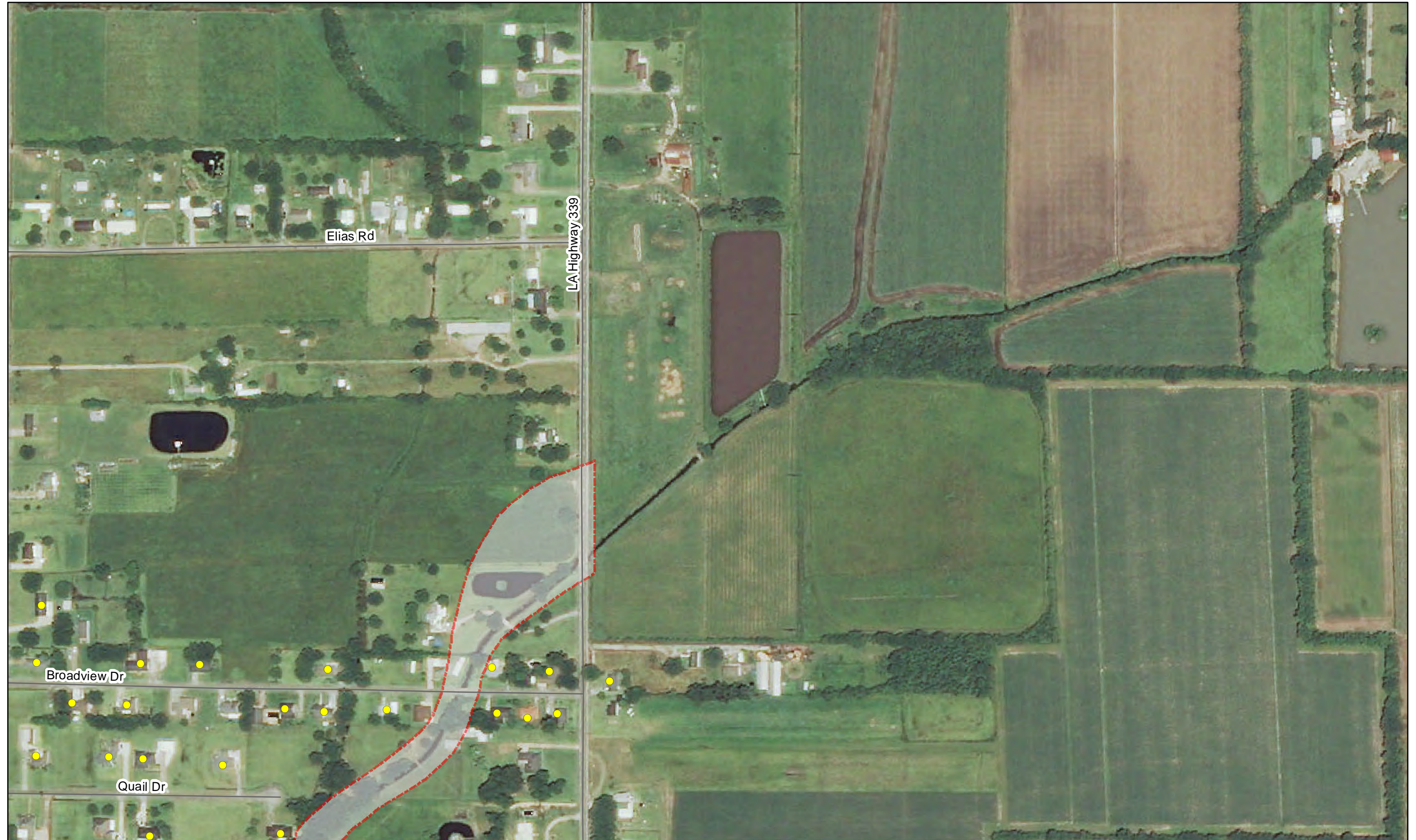
Imagery: Louisiana NAIP Imagery 2013



Southwest Coastal NED Plan

340

350



PROJECT STRUCTURES

- RESIDENTIAL
- NON-RESIDENTIAL
- WAREHOUSE

Structures identified as preliminarily eligible require additional on-site assessment and must meet certain criteria in order to participate in the nonstructural project. More information about the general nonstructural process can be found in Appendix L. Additional details concerning eligibility criteria will be developed during the design and construction phases.

364



Structure Inventory: Data on study area structures were collected in 2012 via visual assessment.

Imagery: Louisiana NAIP Imagery 2013



Southwest Coastal NED Plan



PROJECT STRUCTURES

- RESIDENTIAL
- NON-RESIDENTIAL
- WAREHOUSE

Structures identified as preliminarily eligible require additional on-site assessment and must meet certain criteria in order to participate in the nonstructural project. More information about the general nonstructural process can be found in Appendix L. Additional details concerning eligibility criteria will be developed during the design and construction phases.

0 350 700 Feet

Structure Inventory: Data on study area structures were collected in 2012 via visual assessment.

Imagery: Louisiana NAIP Imagery 2013



Southwest Coastal NED Plan



PROJECT STRUCTURES

- RESIDENTIAL
- NON-RESIDENTIAL
- WAREHOUSE

Structures identified as preliminarily eligible require additional on-site assessment and must meet certain criteria in order to participate in the nonstructural project. More information about the general nonstructural process can be found in Appendix L. Additional details concerning eligibility criteria will be developed during the design and construction phases.



Structure Inventory: Data on study area structures were collected in 2012 via visual assessment.

Imagery: Louisiana NAIP Imagery 2013



Southwest Coastal NED Plan



355

PROJECT STRUCTURES

- RESIDENTIAL
- NON-RESIDENTIAL
- WAREHOUSE

Structures identified as preliminarily eligible require additional on-site assessment and must meet certain criteria in order to participate in the nonstructural project. More information about the general nonstructural process can be found in Appendix L. Additional details concerning eligibility criteria will be developed during the design and construction phases.

367



Structure Inventory: Data on study area structures were collected in 2012 via visual assessment.

Imagery: Louisiana NAIP Imagery 2013



Southwest Coastal NED Plan



354

356

368

PROJECT STRUCTURES

- RESIDENTIAL
- NON-RESIDENTIAL
- WAREHOUSE

Structures identified as preliminarily eligible require additional on-site assessment and must meet certain criteria in order to participate in the nonstructural project. More information about the general nonstructural process can be found in Appendix L. Additional details concerning eligibility criteria will be developed during the design and construction phases.



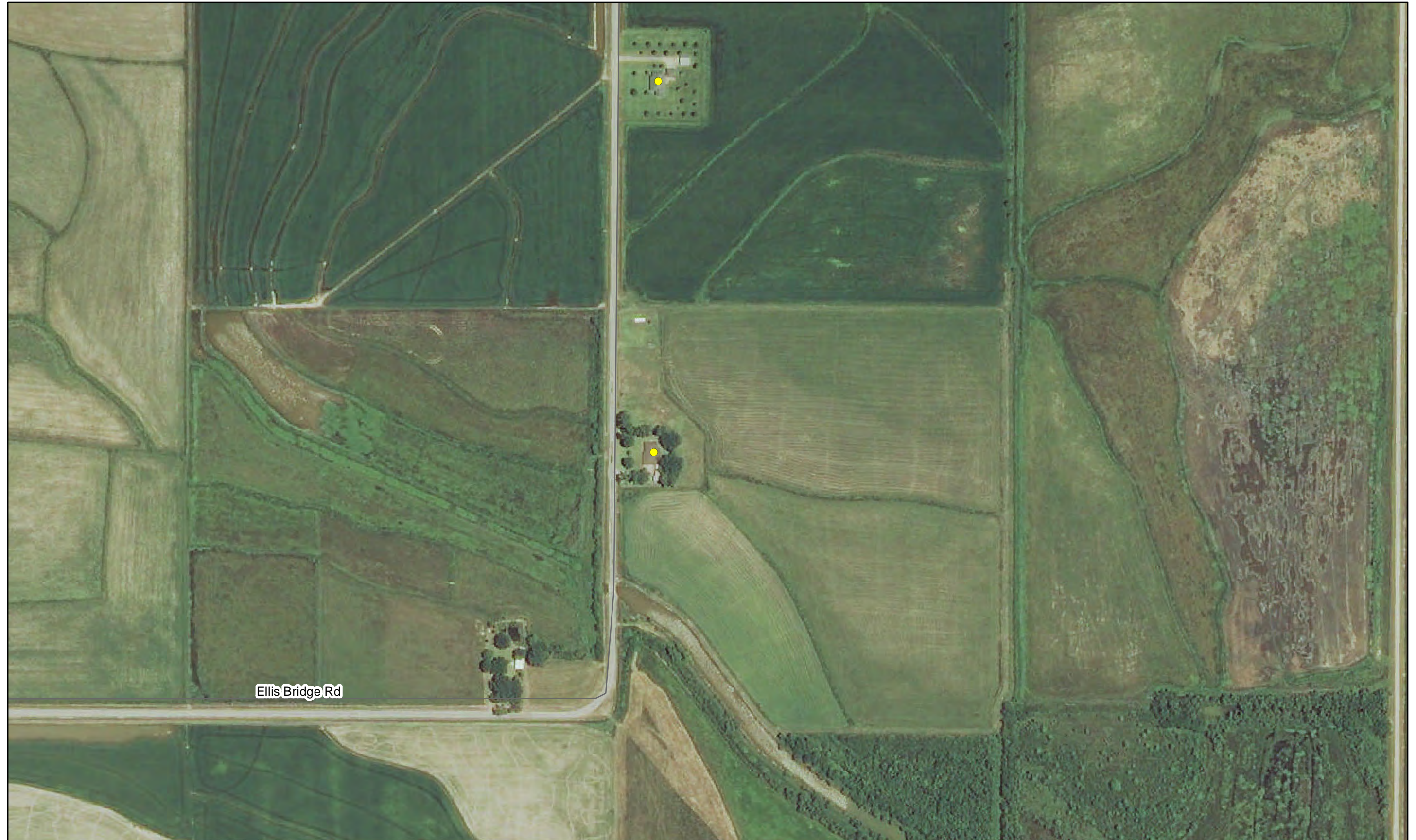
Structure Inventory: Data on study area structures were collected in 2012 via visual assessment.

Imagery: Louisiana NAIP Imagery 2013



Southwest Coastal NED Plan

343



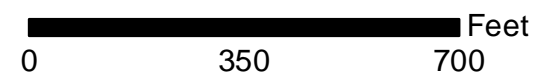
355

PROJECT STRUCTURES

- RESIDENTIAL
- NON-RESIDENTIAL
- WAREHOUSE

Structures identified as preliminarily eligible require additional on-site assessment and must meet certain criteria in order to participate in the nonstructural project. More information about the general nonstructural process can be found in Appendix L. Additional details concerning eligibility criteria will be developed during the design and construction phases.

369



Structure Inventory: Data on study area structures were collected in 2012 via visual assessment.

Imagery: Louisiana NAIP Imagery 2013



Southwest Coastal NED Plan

345



PROJECT STRUCTURES

- RESIDENTIAL
- NON-RESIDENTIAL
- WAREHOUSE

Structures identified as preliminarily eligible require additional on-site assessment and must meet certain criteria in order to participate in the nonstructural project. More information about the general nonstructural process can be found in Appendix L. Additional details concerning eligibility criteria will be developed during the design and construction phases.

370



Structure Inventory: Data on study area structures were collected in 2012 via visual assessment.

Imagery: Louisiana NAIP Imagery 2013



Southwest Coastal NED Plan



PROJECT STRUCTURES

- RESIDENTIAL
- NON-RESIDENTIAL
- WAREHOUSE

Structures identified as preliminarily eligible require additional on-site assessment and must meet certain criteria in order to participate in the nonstructural project. More information about the general nonstructural process can be found in Appendix L. Additional details concerning eligibility criteria will be developed during the design and construction phases.



Structure Inventory: Data on study area structures were collected in 2012 via visual assessment.

Imagery: Louisiana NAIP Imagery 2013



Southwest Coastal NED Plan



PROJECT STRUCTURES

- RESIDENTIAL
- NON-RESIDENTIAL
- WAREHOUSE

Structures identified as preliminarily eligible require additional on-site assessment and must meet certain criteria in order to participate in the nonstructural project. More information about the general nonstructural process can be found in Appendix L. Additional details concerning eligibility criteria will be developed during the design and construction phases.

372



Structure Inventory: Data on study area structures were collected in 2012 via visual assessment.

Imagery: Louisiana NAIP Imagery 2013



Southwest Coastal NED Plan



PROJECT STRUCTURES

- RESIDENTIAL
- NON-RESIDENTIAL
- WAREHOUSE

Structures identified as preliminarily eligible require additional on-site assessment and must meet certain criteria in order to participate in the nonstructural project. More information about the general nonstructural process can be found in Appendix L. Additional details concerning eligibility criteria will be developed during the design and construction phases.



Structure Inventory: Data on study area structures were collected in 2012 via visual assessment.

Imagery: Louisiana NAIP Imagery 2013



Southwest Coastal NED Plan



362

PROJECT STRUCTURES

- RESIDENTIAL
- NON-RESIDENTIAL
- WAREHOUSE

Structures identified as preliminarily eligible require additional on-site assessment and must meet certain criteria in order to participate in the nonstructural project. More information about the general nonstructural process can be found in Appendix L. Additional details concerning eligibility criteria will be developed during the design and construction phases.

375



Structure Inventory: Data on study area structures were collected in 2012 via visual assessment.

Imagery: Louisiana NAIP Imagery 2013



Southwest Coastal NED Plan



361

376

PROJECT STRUCTURES

- RESIDENTIAL
- NON-RESIDENTIAL
- WAREHOUSE

Structures identified as preliminarily eligible require additional on-site assessment and must meet certain criteria in order to participate in the nonstructural project. More information about the general nonstructural process can be found in Appendix L. Additional details concerning eligibility criteria will be developed during the design and construction phases.



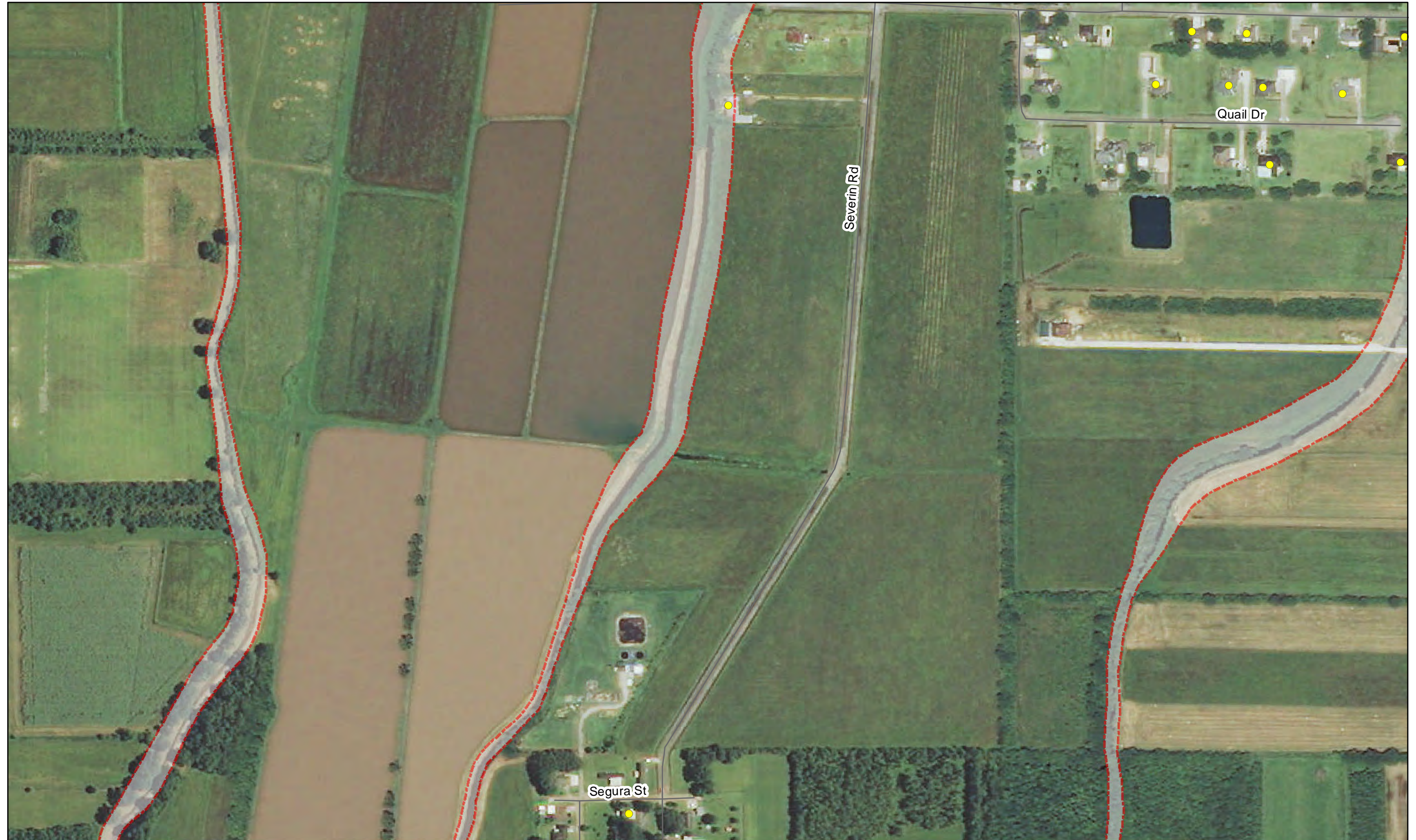
Structure Inventory: Data on study area structures were collected in 2012 via visual assessment.

Imagery: Louisiana NAIP Imagery 2013



Southwest Coastal NED Plan

350



364

PROJECT STRUCTURES

- RESIDENTIAL
- NON-RESIDENTIAL
- WAREHOUSE

Structures identified as preliminarily eligible require additional on-site assessment and must meet certain criteria in order to participate in the nonstructural project. More information about the general nonstructural process can be found in Appendix L. Additional details concerning eligibility criteria will be developed during the design and construction phases.

379



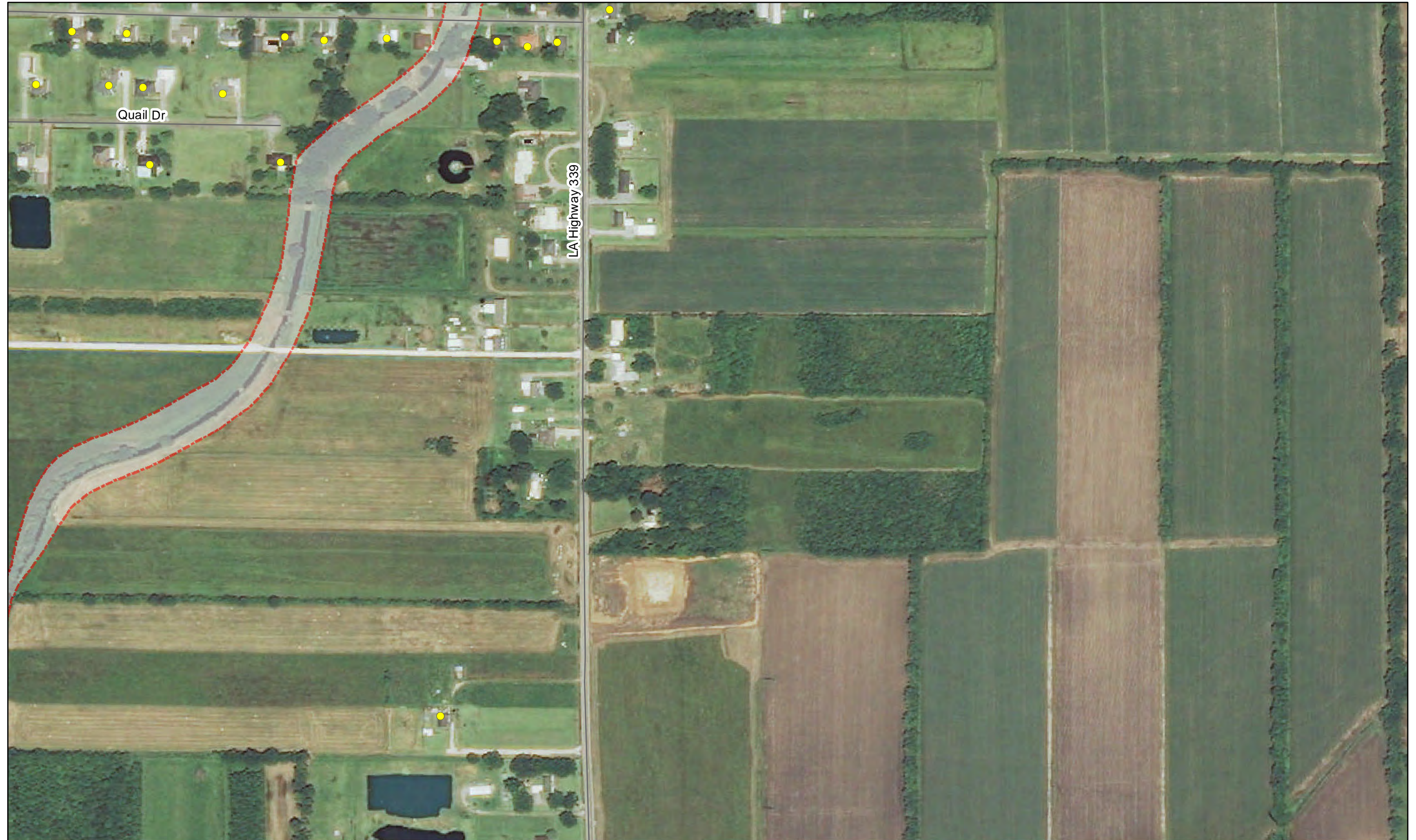
Structure Inventory: Data on study area structures were collected in 2012 via visual assessment.

Imagery: Louisiana NAIP Imagery 2013



Southwest Coastal NED Plan

351



363

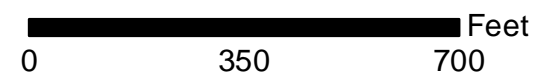
365

380

PROJECT STRUCTURES

- RESIDENTIAL
- NON-RESIDENTIAL
- WAREHOUSE

Structures identified as preliminarily eligible require additional on-site assessment and must meet certain criteria in order to participate in the nonstructural project. More information about the general nonstructural process can be found in Appendix L. Additional details concerning eligibility criteria will be developed during the design and construction phases.



Structure Inventory: Data on study area structures were collected in 2012 via visual assessment.

Imagery: Louisiana NAIP Imagery 2013



Southwest Coastal NED Plan

364



PROJECT STRUCTURES

- RESIDENTIAL
- NON-RESIDENTIAL
- WAREHOUSE

Structures identified as preliminarily eligible require additional on-site assessment and must meet certain criteria in order to participate in the nonstructural project. More information about the general nonstructural process can be found in Appendix L. Additional details concerning eligibility criteria will be developed during the design and construction phases.

381



Structure Inventory: Data on study area structures were collected in 2012 via visual assessment.

Imagery: Louisiana NAIP Imagery 2013



Southwest Coastal NED Plan



367

PROJECT STRUCTURES

- RESIDENTIAL
- NON-RESIDENTIAL
- WAREHOUSE

Structures identified as preliminarily eligible require additional on-site assessment and must meet certain criteria in order to participate in the nonstructural project. More information about the general nonstructural process can be found in Appendix L. Additional details concerning eligibility criteria will be developed during the design and construction phases.



Structure Inventory: Data on study area structures were collected in 2012 via visual assessment.

Imagery: Louisiana NAIP Imagery 2013



Southwest Coastal NED Plan

354



366

368

PROJECT STRUCTURES

- RESIDENTIAL
- NON-RESIDENTIAL
- WAREHOUSE

Structures identified as preliminarily eligible require additional on-site assessment and must meet certain criteria in order to participate in the nonstructural project. More information about the general nonstructural process can be found in Appendix L. Additional details concerning eligibility criteria will be developed during the design and construction phases.



Structure Inventory: Data on study area structures were collected in 2012 via visual assessment.

Imagery: Louisiana NAIP Imagery 2013



Southwest Coastal NED Plan

355



367

369

PROJECT STRUCTURES

- RESIDENTIAL
- NON-RESIDENTIAL
- WAREHOUSE

Structures identified as preliminarily eligible require additional on-site assessment and must meet certain criteria in order to participate in the nonstructural project. More information about the general nonstructural process can be found in Appendix L. Additional details concerning eligibility criteria will be developed during the design and construction phases.



Structure Inventory: Data on study area structures were collected in 2012 via visual assessment.

Imagery: Louisiana NAIP Imagery 2013



Southwest Coastal NED Plan

356



368

PROJECT STRUCTURES

- RESIDENTIAL
- NON-RESIDENTIAL
- WAREHOUSE

Structures identified as preliminarily eligible require additional on-site assessment and must meet certain criteria in order to participate in the nonstructural project. More information about the general nonstructural process can be found in Appendix L. Additional details concerning eligibility criteria will be developed during the design and construction phases.



Structure Inventory: Data on study area structures were collected in 2012 via visual assessment.

Imagery: Louisiana NAIP Imagery 2013



Southwest Coastal NED Plan

357

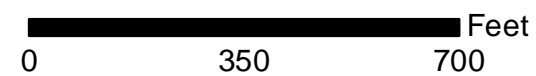


PROJECT STRUCTURES

- RESIDENTIAL
- NON-RESIDENTIAL
- WAREHOUSE

Structures identified as preliminarily eligible require additional on-site assessment and must meet certain criteria in order to participate in the nonstructural project. More information about the general nonstructural process can be found in Appendix L. Additional details concerning eligibility criteria will be developed during the design and construction phases.

384



Structure Inventory: Data on study area structures were collected in 2012 via visual assessment.

Imagery: Louisiana NAIP Imagery 2013



Southwest Coastal NED Plan



372

PROJECT STRUCTURES

- RESIDENTIAL
- NON-RESIDENTIAL
- WAREHOUSE

Structures identified as preliminarily eligible require additional on-site assessment and must meet certain criteria in order to participate in the nonstructural project. More information about the general nonstructural process can be found in Appendix L. Additional details concerning eligibility criteria will be developed during the design and construction phases.

385



Structure Inventory: Data on study area structures were collected in 2012 via visual assessment.

Imagery: Louisiana NAIP Imagery 2013



Southwest Coastal NED Plan

359



371

373

PROJECT STRUCTURES

- RESIDENTIAL
- NON-RESIDENTIAL
- WAREHOUSE

Structures identified as preliminarily eligible require additional on-site assessment and must meet certain criteria in order to participate in the nonstructural project. More information about the general nonstructural process can be found in Appendix L. Additional details concerning eligibility criteria will be developed during the design and construction phases.



Structure Inventory: Data on study area structures were collected in 2012 via visual assessment.

Imagery: Louisiana NAIP Imagery 2013



Southwest Coastal NED Plan



372

374

PROJECT STRUCTURES

- RESIDENTIAL
- NON-RESIDENTIAL
- WAREHOUSE

Structures identified as preliminarily eligible require additional on-site assessment and must meet certain criteria in order to participate in the nonstructural project. More information about the general nonstructural process can be found in Appendix L. Additional details concerning eligibility criteria will be developed during the design and construction phases.

0 350 700 Feet

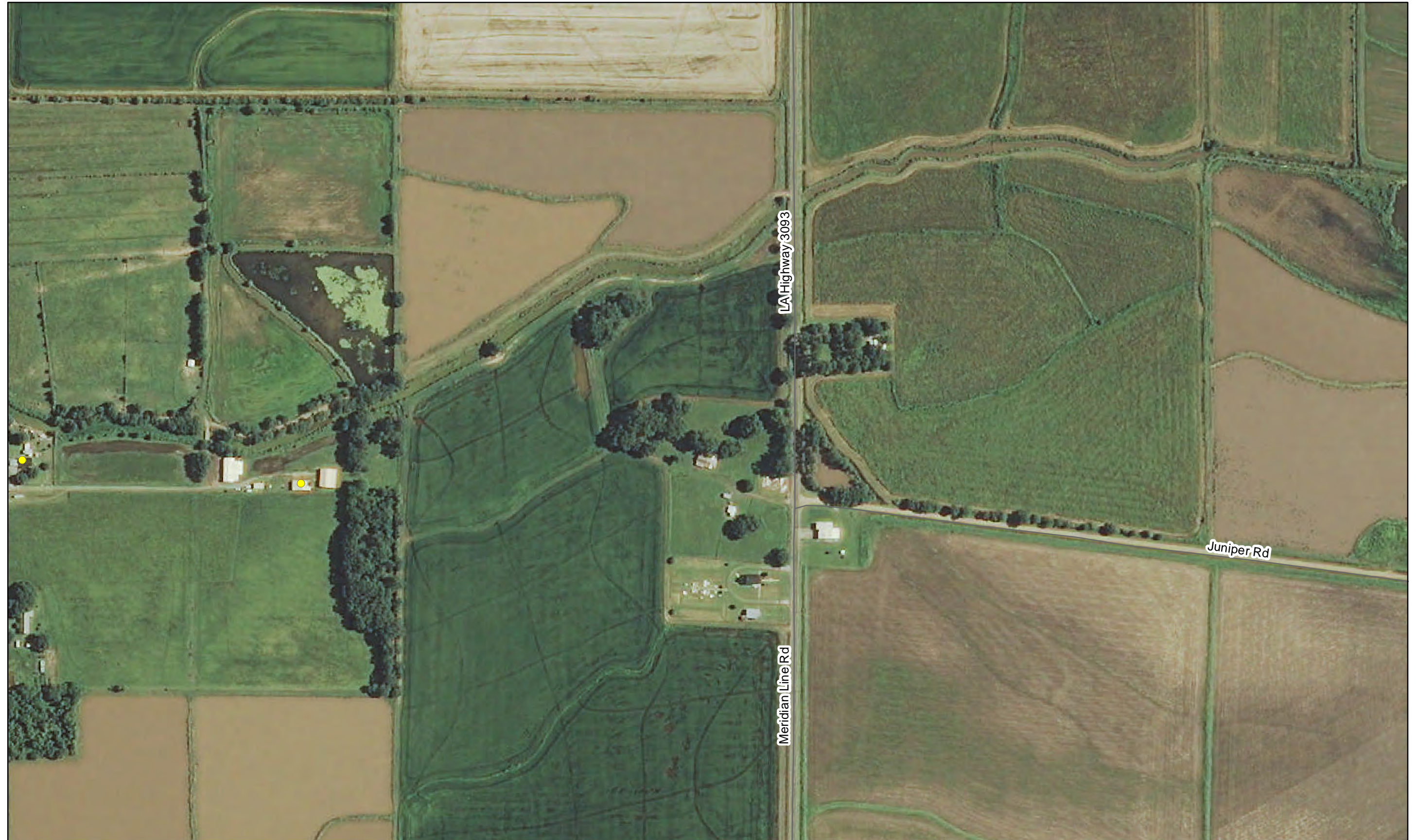
Structure Inventory: Data on study area structures were collected in 2012 via visual assessment.

Imagery: Louisiana NAIP Imagery 2013



Southwest Coastal NED Plan

373



PROJECT STRUCTURES

- RESIDENTIAL
- NON-RESIDENTIAL
- WAREHOUSE

Structures identified as preliminarily eligible require additional on-site assessment and must meet certain criteria in order to participate in the nonstructural project. More information about the general nonstructural process can be found in Appendix L. Additional details concerning eligibility criteria will be developed during the design and construction phases.

386



Structure Inventory: Data on study area structures were collected in 2012 via visual assessment.

Imagery: Louisiana NAIP Imagery 2013



Southwest Coastal NED Plan

361



376

PROJECT STRUCTURES

- RESIDENTIAL
- NON-RESIDENTIAL
- WAREHOUSE

Structures identified as preliminarily eligible require additional on-site assessment and must meet certain criteria in order to participate in the nonstructural project. More information about the general nonstructural process can be found in Appendix L. Additional details concerning eligibility criteria will be developed during the design and construction phases.

390



Structure Inventory: Data on study area structures were collected in 2012 via visual assessment.

Imagery: Louisiana NAIP Imagery 2013



Southwest Coastal NED Plan

362



375

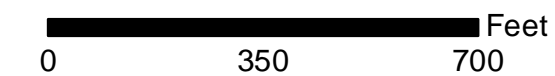
377

391

PROJECT STRUCTURES

- RESIDENTIAL
- NON-RESIDENTIAL
- WAREHOUSE

Structures identified as preliminarily eligible require additional on-site assessment and must meet certain criteria in order to participate in the nonstructural project. More information about the general nonstructural process can be found in Appendix L. Additional details concerning eligibility criteria will be developed during the design and construction phases.

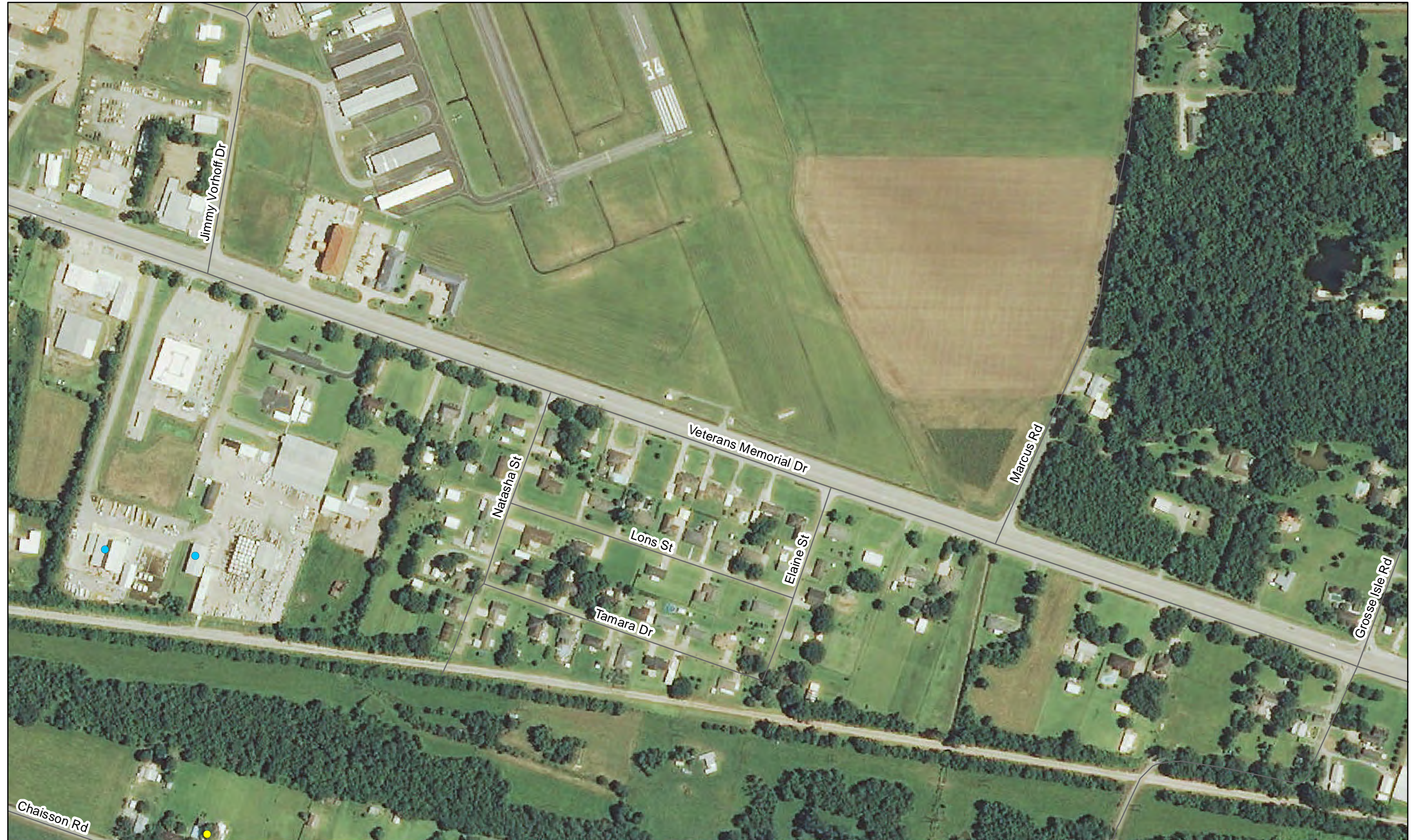


Structure Inventory: Data on study area structures were collected in 2012 via visual assessment.

Imagery: Louisiana NAIP Imagery 2013



Southwest Coastal NED Plan



376

392

PROJECT STRUCTURES

- RESIDENTIAL
- NON-RESIDENTIAL
- WAREHOUSE

Structures identified as preliminarily eligible require additional on-site assessment and must meet certain criteria in order to participate in the nonstructural project. More information about the general nonstructural process can be found in Appendix L. Additional details concerning eligibility criteria will be developed during the design and construction phases.

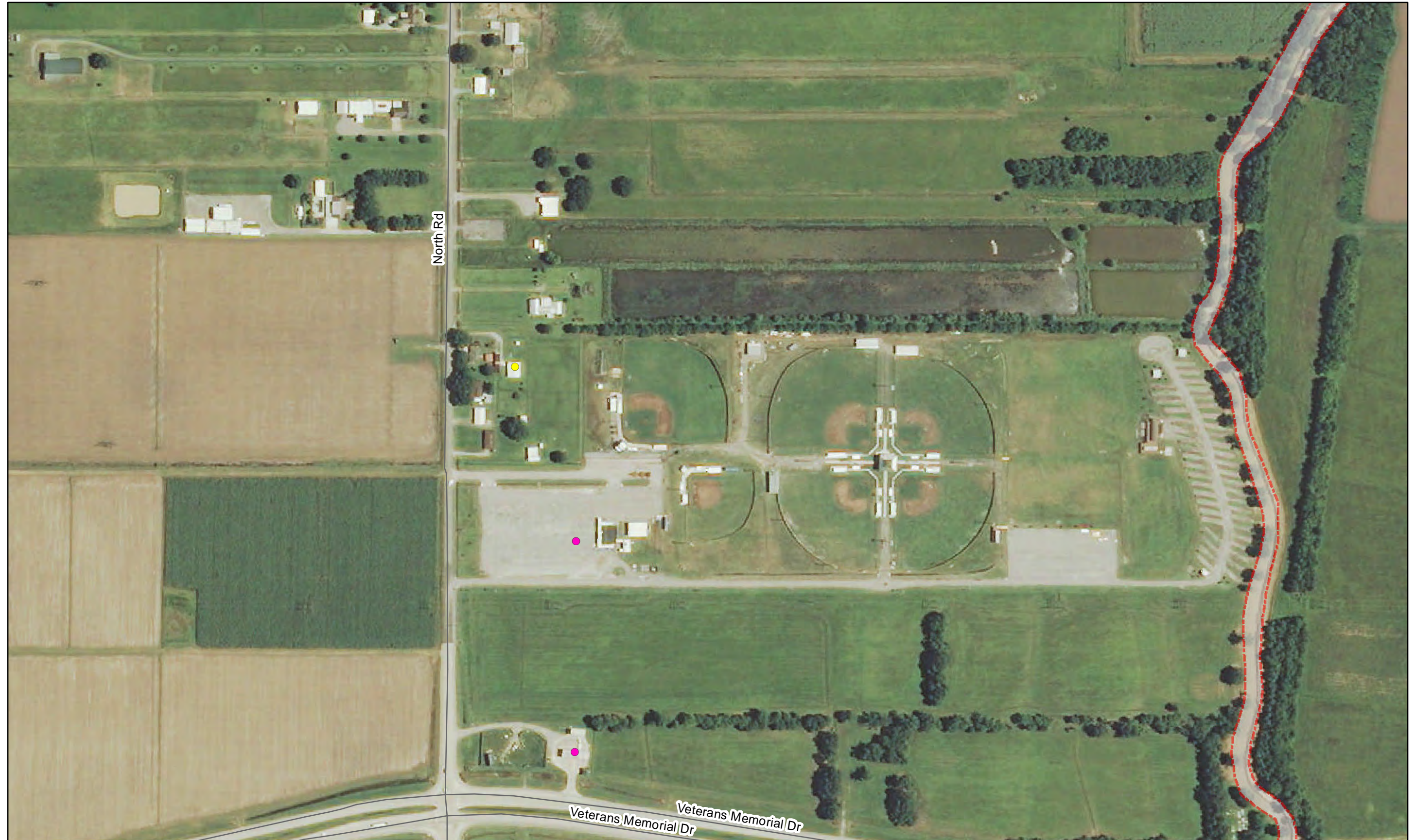


Structure Inventory: Data on study area structures were collected in 2012 via visual assessment.

Imagery: Louisiana NAIP Imagery 2013



Southwest Coastal NED Plan



379

PROJECT STRUCTURES	
●	RESIDENTIAL
●	NON-RESIDENTIAL
●	WAREHOUSE

Structures identified as preliminarily eligible require additional on-site assessment and must meet certain criteria in order to participate in the nonstructural project. More information about the general nonstructural process can be found in Appendix L. Additional details concerning eligibility criteria will be developed during the design and construction phases.

393



Structure Inventory: Data on study area structures were collected in 2012 via visual assessment.

Imagery: Louisiana NAIP Imagery 2013



Southwest Coastal NED Plan

363



378

380

394

PROJECT STRUCTURES

- RESIDENTIAL
- NON-RESIDENTIAL
- WAREHOUSE

Structures identified as preliminarily eligible require additional on-site assessment and must meet certain criteria in order to participate in the nonstructural project. More information about the general nonstructural process can be found in Appendix L. Additional details concerning eligibility criteria will be developed during the design and construction phases.



Structure Inventory: Data on study area structures were collected in 2012 via visual assessment.

Imagery: Louisiana NAIP Imagery 2013



Southwest Coastal NED Plan

364



379

381

395

PROJECT STRUCTURES

- RESIDENTIAL
- NON-RESIDENTIAL
- WAREHOUSE

Structures identified as preliminarily eligible require additional on-site assessment and must meet certain criteria in order to participate in the nonstructural project. More information about the general nonstructural process can be found in Appendix L. Additional details concerning eligibility criteria will be developed during the design and construction phases.



Structure Inventory: Data on study area structures were collected in 2012 via visual assessment.

Imagery: Louisiana NAIP Imagery 2013



Southwest Coastal NED Plan

365



380

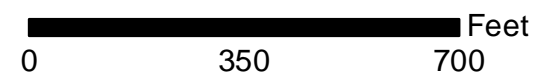
382

396

PROJECT STRUCTURES

- RESIDENTIAL
- NON-RESIDENTIAL
- WAREHOUSE

Structures identified as preliminarily eligible require additional on-site assessment and must meet certain criteria in order to participate in the nonstructural project. More information about the general nonstructural process can be found in Appendix L. Additional details concerning eligibility criteria will be developed during the design and construction phases.



Structure Inventory: Data on study area structures were collected in 2012 via visual assessment.

Imagery: Louisiana NAIP Imagery 2013



Southwest Coastal NED Plan



381

383

PROJECT STRUCTURES

- RESIDENTIAL
- NON-RESIDENTIAL
- WAREHOUSE

Structures identified as preliminarily eligible require additional on-site assessment and must meet certain criteria in order to participate in the nonstructural project. More information about the general nonstructural process can be found in Appendix L. Additional details concerning eligibility criteria will be developed during the design and construction phases.



Structure Inventory: Data on study area structures were collected in 2012 via visual assessment.

Imagery: Louisiana NAIP Imagery 2013



Southwest Coastal NED Plan



382

PROJECT STRUCTURES

- RESIDENTIAL
- NON-RESIDENTIAL
- WAREHOUSE

Structures identified as preliminarily eligible require additional on-site assessment and must meet certain criteria in order to participate in the nonstructural project. More information about the general nonstructural process can be found in Appendix L. Additional details concerning eligibility criteria will be developed during the design and construction phases.



Structure Inventory: Data on study area structures were collected in 2012 via visual assessment.

Imagery: Louisiana NAIP Imagery 2013



Southwest Coastal NED Plan

370



PROJECT STRUCTURES

- RESIDENTIAL
- NON-RESIDENTIAL
- WAREHOUSE

Structures identified as preliminarily eligible require additional on-site assessment and must meet certain criteria in order to participate in the nonstructural project. More information about the general nonstructural process can be found in Appendix L. Additional details concerning eligibility criteria will be developed during the design and construction phases.

398



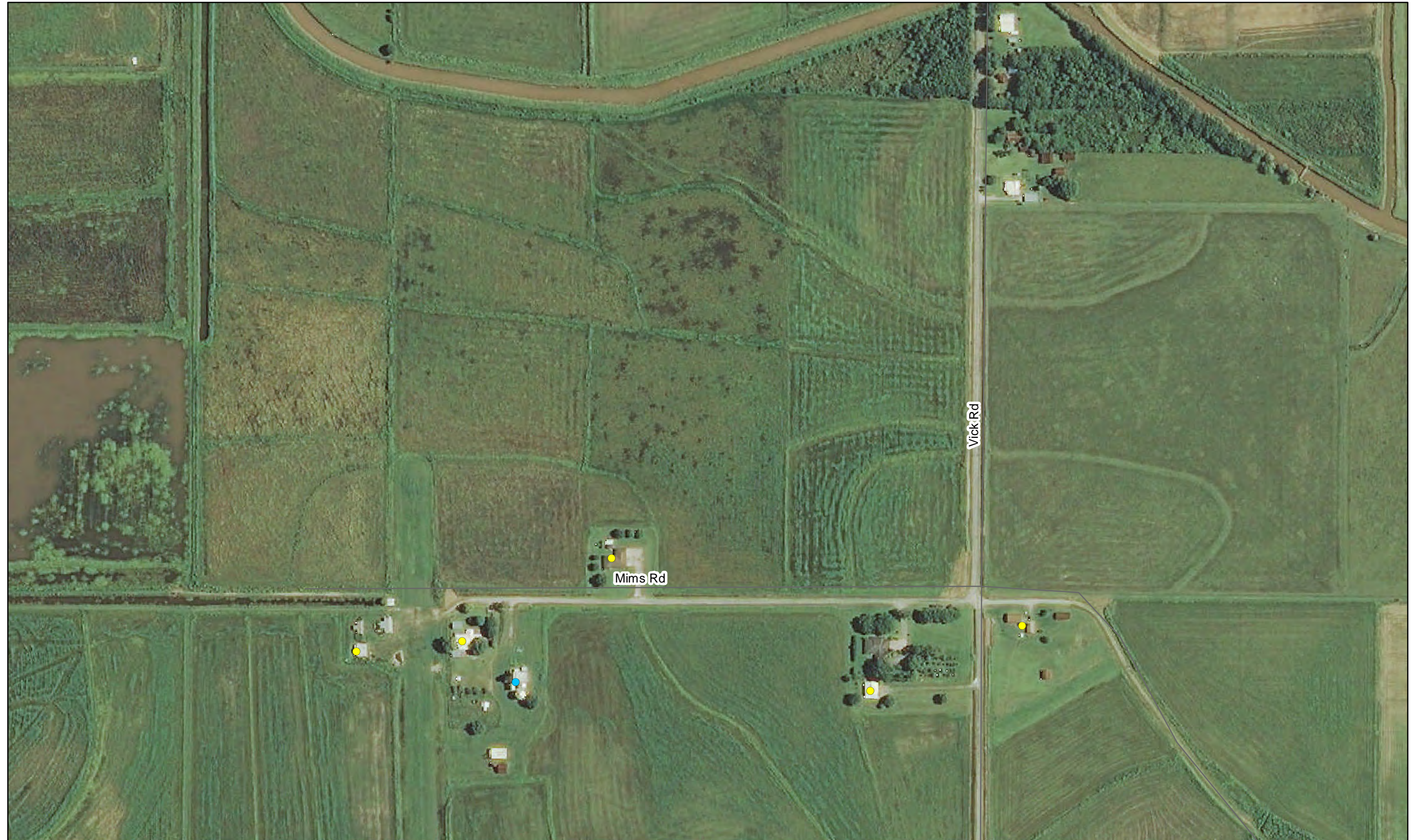
Structure Inventory: Data on study area structures were collected in 2012 via visual assessment.

Imagery: Louisiana NAIP Imagery 2013



Southwest Coastal NED Plan

371



PROJECT STRUCTURES

- RESIDENTIAL
- NON-RESIDENTIAL
- WAREHOUSE

Structures identified as preliminarily eligible require additional on-site assessment and must meet certain criteria in order to participate in the nonstructural project. More information about the general nonstructural process can be found in Appendix L. Additional details concerning eligibility criteria will be developed during the design and construction phases.

399



Structure Inventory: Data on study area structures were collected in 2012 via visual assessment.

Imagery: Louisiana NAIP Imagery 2013



Southwest Coastal NED Plan

374



PROJECT STRUCTURES

- RESIDENTIAL
- NON-RESIDENTIAL
- WAREHOUSE

Structures identified as preliminarily eligible require additional on-site assessment and must meet certain criteria in order to participate in the nonstructural project. More information about the general nonstructural process can be found in Appendix L. Additional details concerning eligibility criteria will be developed during the design and construction phases.



Structure Inventory: Data on study area structures were collected in 2012 via visual assessment.

Imagery: Louisiana NAIP Imagery 2013



Southwest Coastal NED Plan

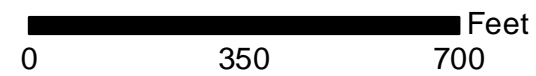


388

PROJECT STRUCTURES

- RESIDENTIAL
- NON-RESIDENTIAL
- WAREHOUSE

Structures identified as preliminarily eligible require additional on-site assessment and must meet certain criteria in order to participate in the nonstructural project. More information about the general nonstructural process can be found in Appendix L. Additional details concerning eligibility criteria will be developed during the design and construction phases.



Structure Inventory: Data on study area structures were collected in 2012 via visual assessment.

Imagery: Louisiana NAIP Imagery 2013



Southwest Coastal NED Plan



387

402

PROJECT STRUCTURES

- RESIDENTIAL
- NON-RESIDENTIAL
- WAREHOUSE

Structures identified as preliminarily eligible require additional on-site assessment and must meet certain criteria in order to participate in the nonstructural project. More information about the general nonstructural process can be found in Appendix L. Additional details concerning eligibility criteria will be developed during the design and construction phases.



Structure Inventory: Data on study area structures were collected in 2012 via visual assessment.

Imagery: Louisiana NAIP Imagery 2013



Southwest Coastal NED Plan



390

PROJECT STRUCTURES

- RESIDENTIAL
- NON-RESIDENTIAL
- WAREHOUSE

Structures identified as preliminarily eligible require additional on-site assessment and must meet certain criteria in order to participate in the nonstructural project. More information about the general nonstructural process can be found in Appendix L. Additional details concerning eligibility criteria will be developed during the design and construction phases.

403



Structure Inventory: Data on study area structures were collected in 2012 via visual assessment.

Imagery: Louisiana NAIP Imagery 2013



Southwest Coastal NED Plan

375



389

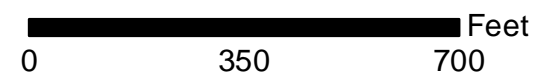
391

PROJECT STRUCTURES

- RESIDENTIAL
- NON-RESIDENTIAL
- WAREHOUSE

Structures identified as preliminarily eligible require additional on-site assessment and must meet certain criteria in order to participate in the nonstructural project. More information about the general nonstructural process can be found in Appendix L. Additional details concerning eligibility criteria will be developed during the design and construction phases.

404



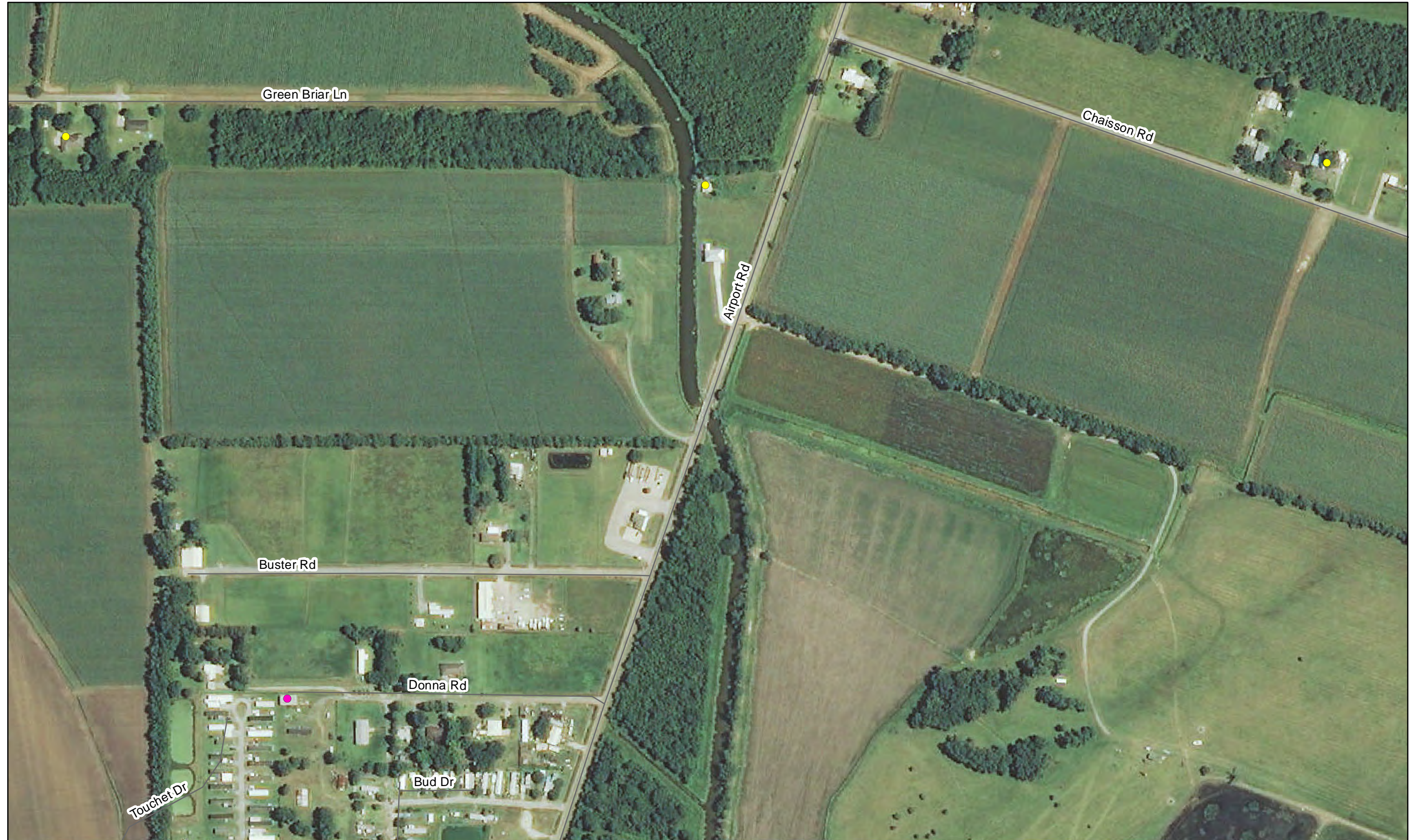
Structure Inventory: Data on study area structures were collected in 2012 via visual assessment.

Imagery: Louisiana NAIP Imagery 2013



Southwest Coastal NED Plan

376



390

392

PROJECT STRUCTURES

- RESIDENTIAL
- NON-RESIDENTIAL
- WAREHOUSE

Structures identified as preliminarily eligible require additional on-site assessment and must meet certain criteria in order to participate in the nonstructural project. More information about the general nonstructural process can be found in Appendix L. Additional details concerning eligibility criteria will be developed during the design and construction phases.



Structure Inventory: Data on study area structures were collected in 2012 via visual assessment.

Imagery: Louisiana NAIP Imagery 2013



Southwest Coastal NED Plan

377



391

PROJECT STRUCTURES

- RESIDENTIAL
- NON-RESIDENTIAL
- WAREHOUSE

Structures identified as preliminarily eligible require additional on-site assessment and must meet certain criteria in order to participate in the nonstructural project. More information about the general nonstructural process can be found in Appendix L. Additional details concerning eligibility criteria will be developed during the design and construction phases.



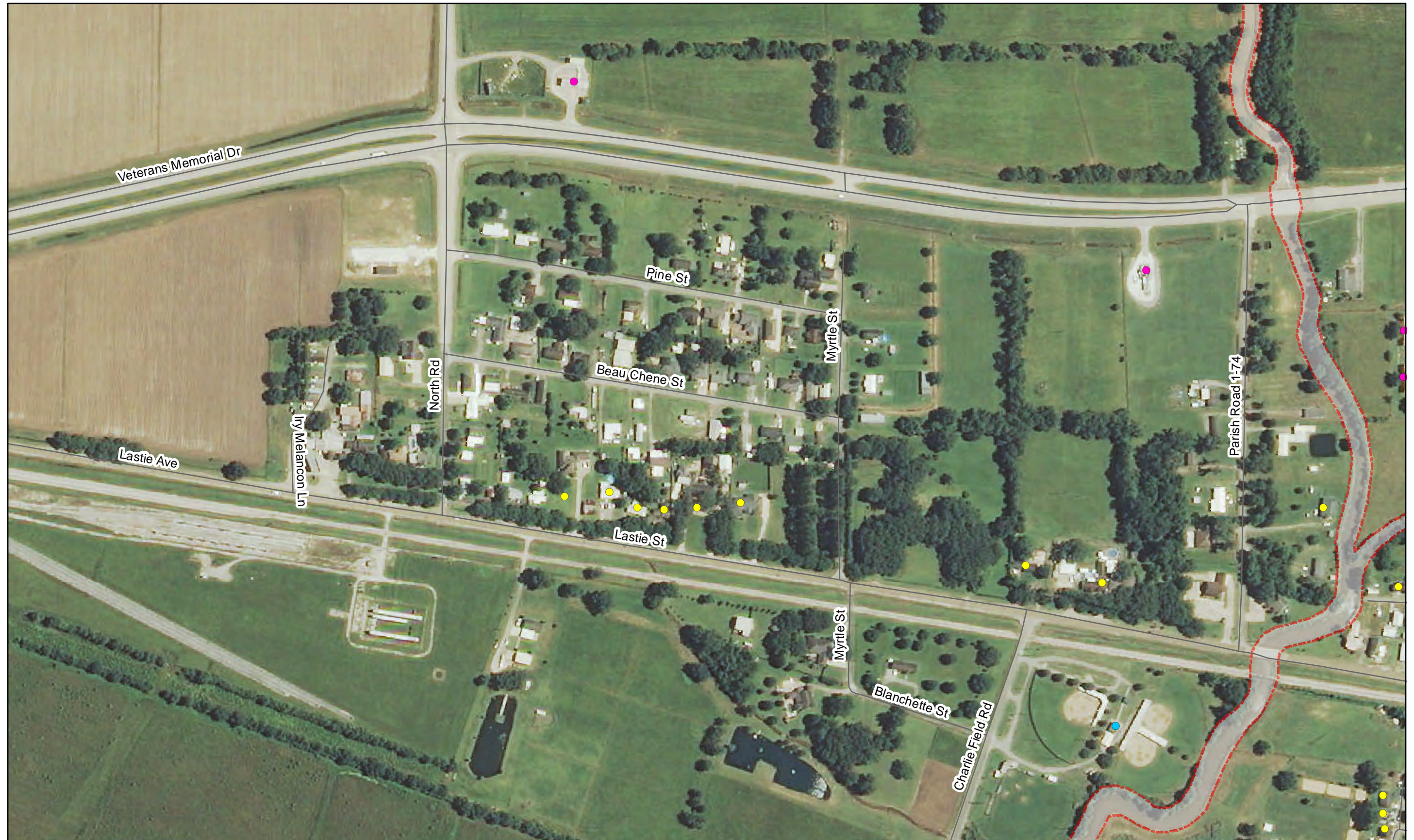
Structure Inventory: Data on study area structures were collected in 2012 via visual assessment.

Imagery: Louisiana NAIP Imagery 2013



Southwest Coastal NED Plan

378



394

PROJECT STRUCTURES

- RESIDENTIAL
- NON-RESIDENTIAL
- WAREHOUSE

Structures identified as preliminarily eligible require additional on-site assessment and must meet certain criteria in order to participate in the nonstructural project. More information about the general nonstructural process can be found in Appendix L. Additional details concerning eligibility criteria will be developed during the design and construction phases.

405



Structure Inventory: Data on study area structures were collected in 2012 via visual assessment.

Imagery: Louisiana NAIP Imagery 2013



Southwest Coastal NED Plan

379



393

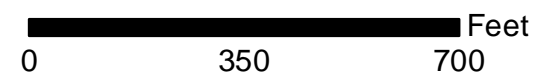
395

406

PROJECT STRUCTURES

- RESIDENTIAL
- NON-RESIDENTIAL
- WAREHOUSE

Structures identified as preliminarily eligible require additional on-site assessment and must meet certain criteria in order to participate in the nonstructural project. More information about the general nonstructural process can be found in Appendix L. Additional details concerning eligibility criteria will be developed during the design and construction phases.



Structure Inventory: Data on study area structures were collected in 2012 via visual assessment.

Imagery: Louisiana NAIP Imagery 2013



Southwest Coastal NED Plan

380



394

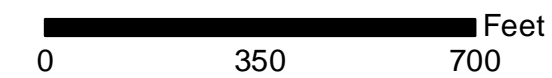
396

407

PROJECT STRUCTURES

- RESIDENTIAL
- NON-RESIDENTIAL
- WAREHOUSE

Structures identified as preliminarily eligible require additional on-site assessment and must meet certain criteria in order to participate in the nonstructural project. More information about the general nonstructural process can be found in Appendix L. Additional details concerning eligibility criteria will be developed during the design and construction phases.



Structure Inventory: Data on study area structures were collected in 2012 via visual assessment.

Imagery: Louisiana NAIP Imagery 2013



Southwest Coastal NED Plan

381



395

408

PROJECT STRUCTURES

- RESIDENTIAL
- NON-RESIDENTIAL
- WAREHOUSE

Structures identified as preliminarily eligible require additional on-site assessment and must meet certain criteria in order to participate in the nonstructural project. More information about the general nonstructural process can be found in Appendix L. Additional details concerning eligibility criteria will be developed during the design and construction phases.



Structure Inventory: Data on study area structures were collected in 2012 via visual assessment.

Imagery: Louisiana NAIP Imagery 2013



Southwest Coastal NED Plan



PROJECT STRUCTURES

- RESIDENTIAL
- NON-RESIDENTIAL
- WAREHOUSE

Structures identified as preliminarily eligible require additional on-site assessment and must meet certain criteria in order to participate in the nonstructural project. More information about the general nonstructural process can be found in Appendix L. Additional details concerning eligibility criteria will be developed during the design and construction phases.

412



Structure Inventory: Data on study area structures were collected in 2012 via visual assessment.

Imagery: Louisiana NAIP Imagery 2013



Southwest Coastal NED Plan

384



PROJECT STRUCTURES

- RESIDENTIAL
- NON-RESIDENTIAL
- WAREHOUSE

Structures identified as preliminarily eligible require additional on-site assessment and must meet certain criteria in order to participate in the nonstructural project. More information about the general nonstructural process can be found in Appendix L. Additional details concerning eligibility criteria will be developed during the design and construction phases.



Structure Inventory: Data on study area structures were collected in 2012 via visual assessment.

Imagery: Louisiana NAIP Imagery 2013



Southwest Coastal NED Plan

385



400

PROJECT STRUCTURES

- RESIDENTIAL
- NON-RESIDENTIAL
- WAREHOUSE

Structures identified as preliminarily eligible require additional on-site assessment and must meet certain criteria in order to participate in the nonstructural project. More information about the general nonstructural process can be found in Appendix L. Additional details concerning eligibility criteria will be developed during the design and construction phases.



Structure Inventory: Data on study area structures were collected in 2012 via visual assessment.

Imagery: Louisiana NAIP Imagery 2013



Southwest Coastal NED Plan



399

401

PROJECT STRUCTURES

- RESIDENTIAL
- NON-RESIDENTIAL
- WAREHOUSE

Structures identified as preliminarily eligible require additional on-site assessment and must meet certain criteria in order to participate in the nonstructural project. More information about the general nonstructural process can be found in Appendix L. Additional details concerning eligibility criteria will be developed during the design and construction phases.



Structure Inventory: Data on study area structures were collected in 2012 via visual assessment.

Imagery: Louisiana NAIP Imagery 2013

