



Map Annex

Below are maps discussed in the Main Report Integrated Final Feasibility Report & EIS



1.0 INTRODUCTION

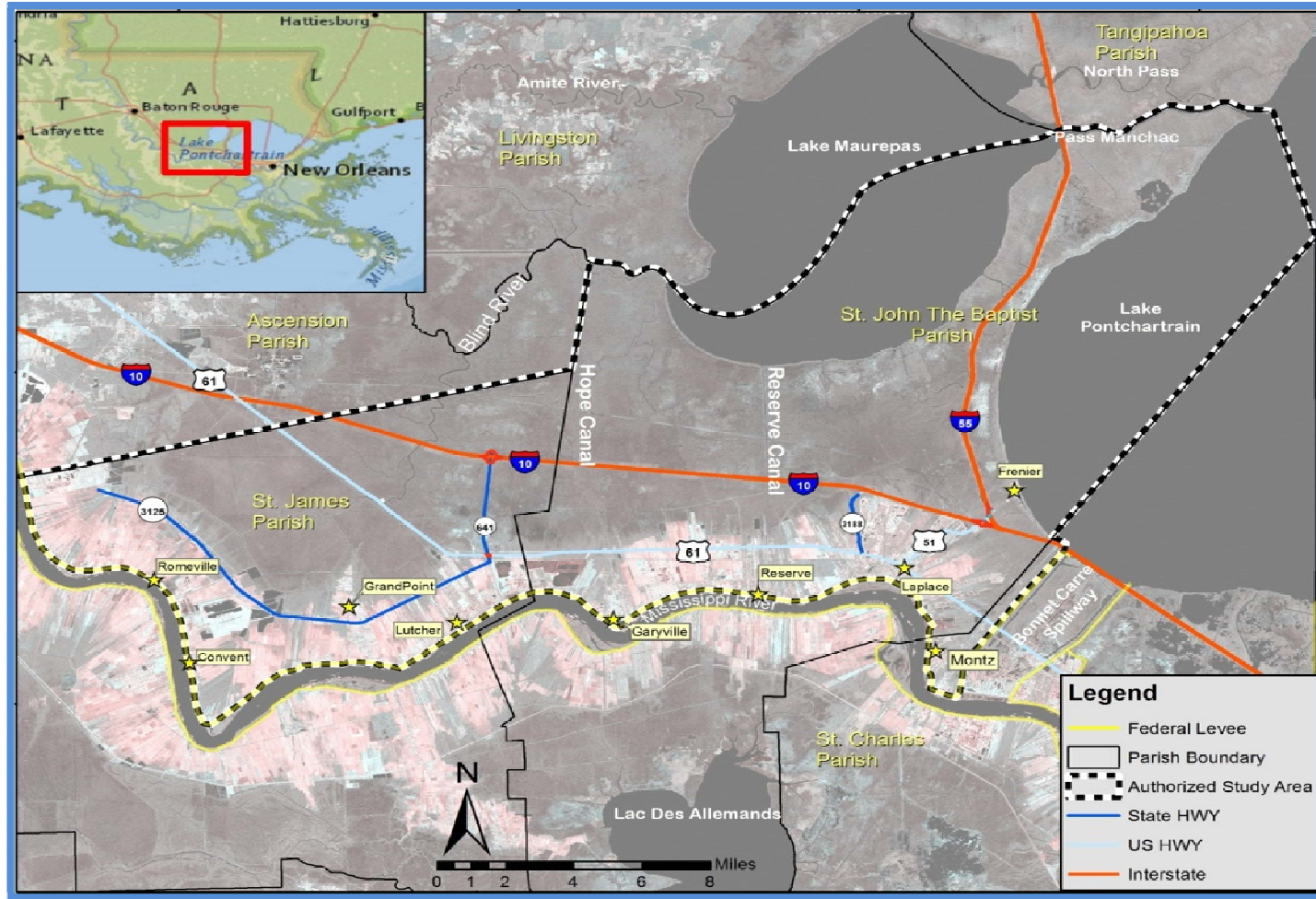


Figure 1-1: West Shore Lake Pontchartrain authorized study area.

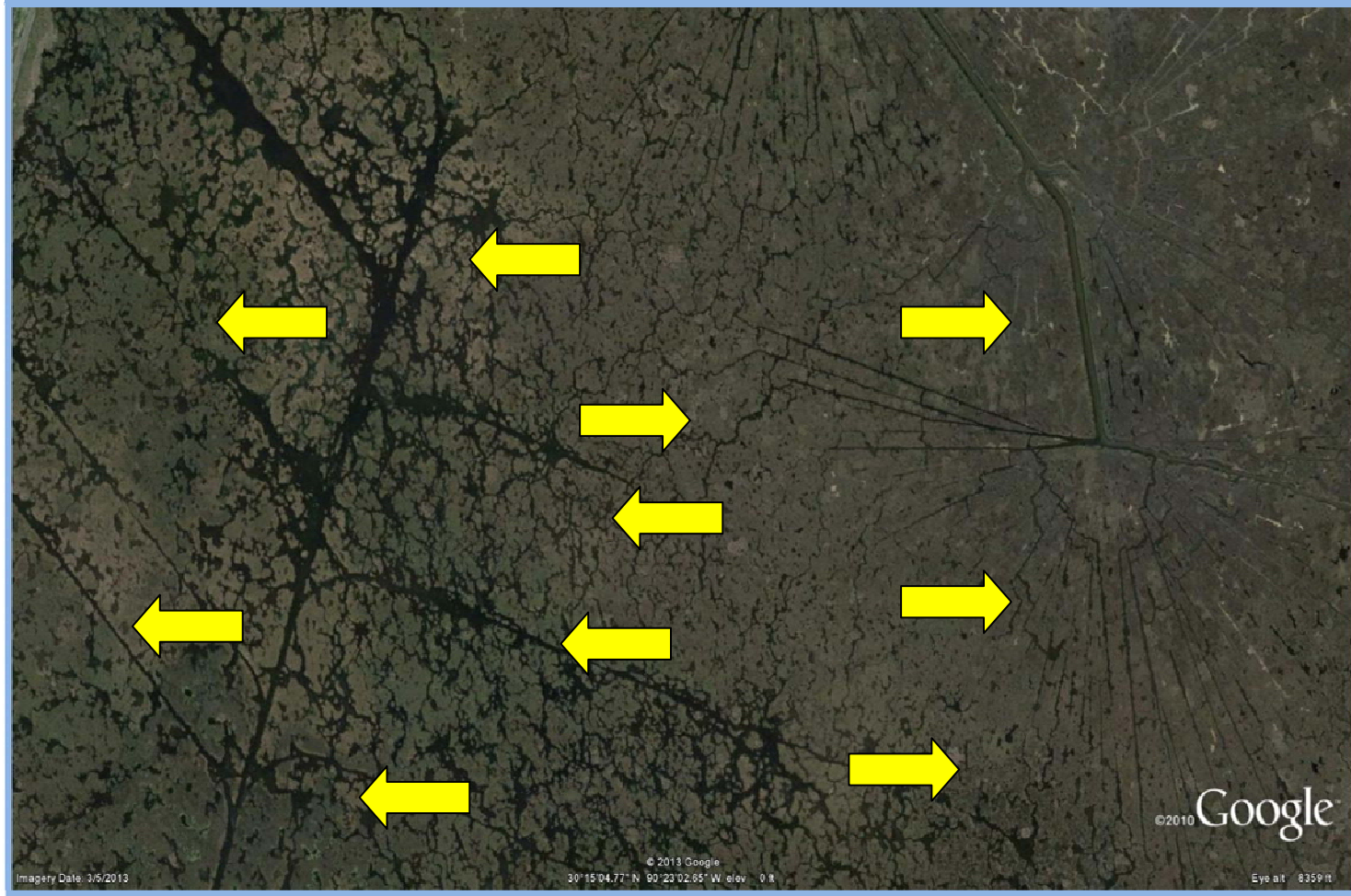


Figure 1-2: Old logging canals in Maurepas Swamp.

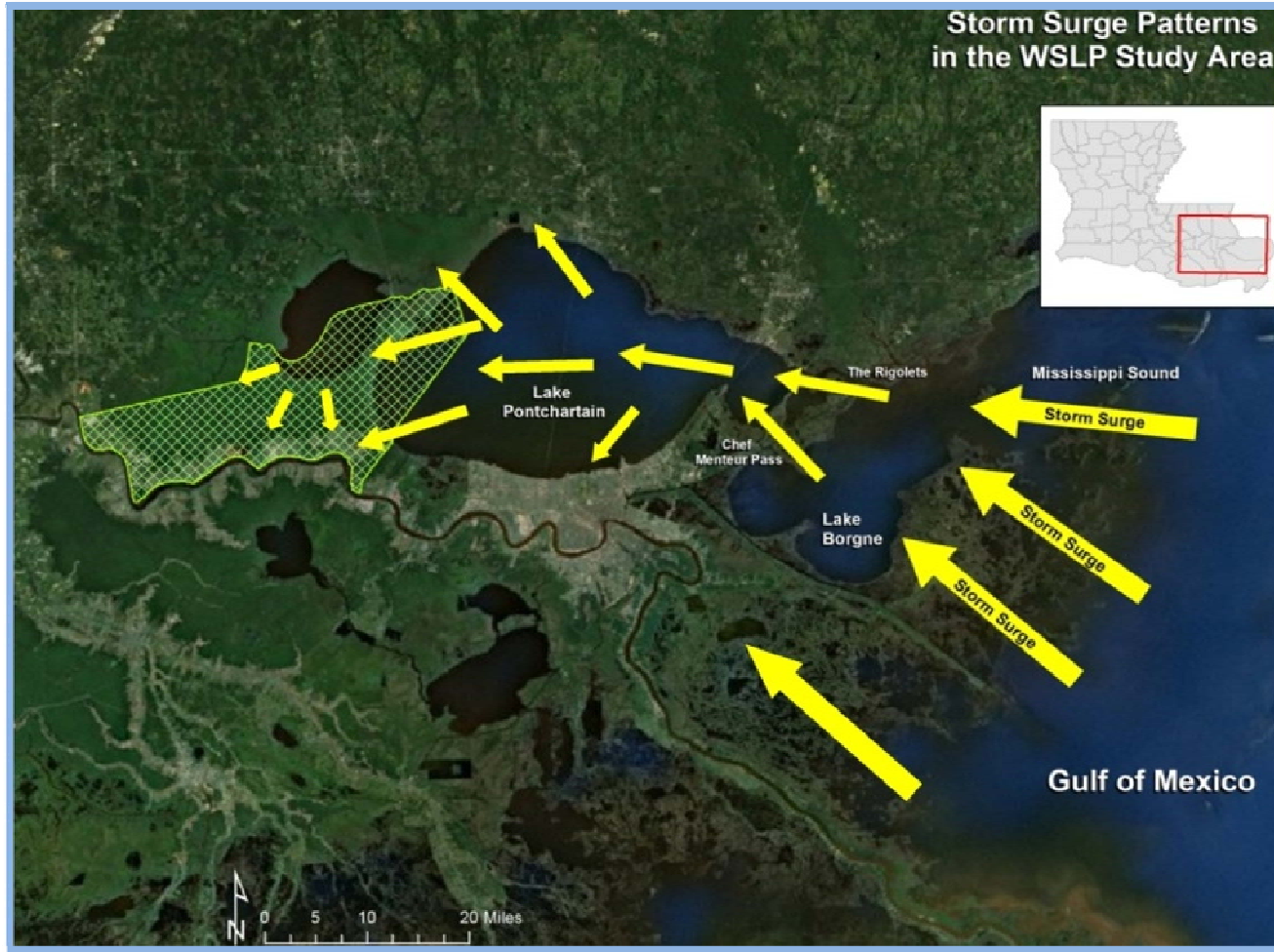


Figure 1-3: Area storm surge patterns.

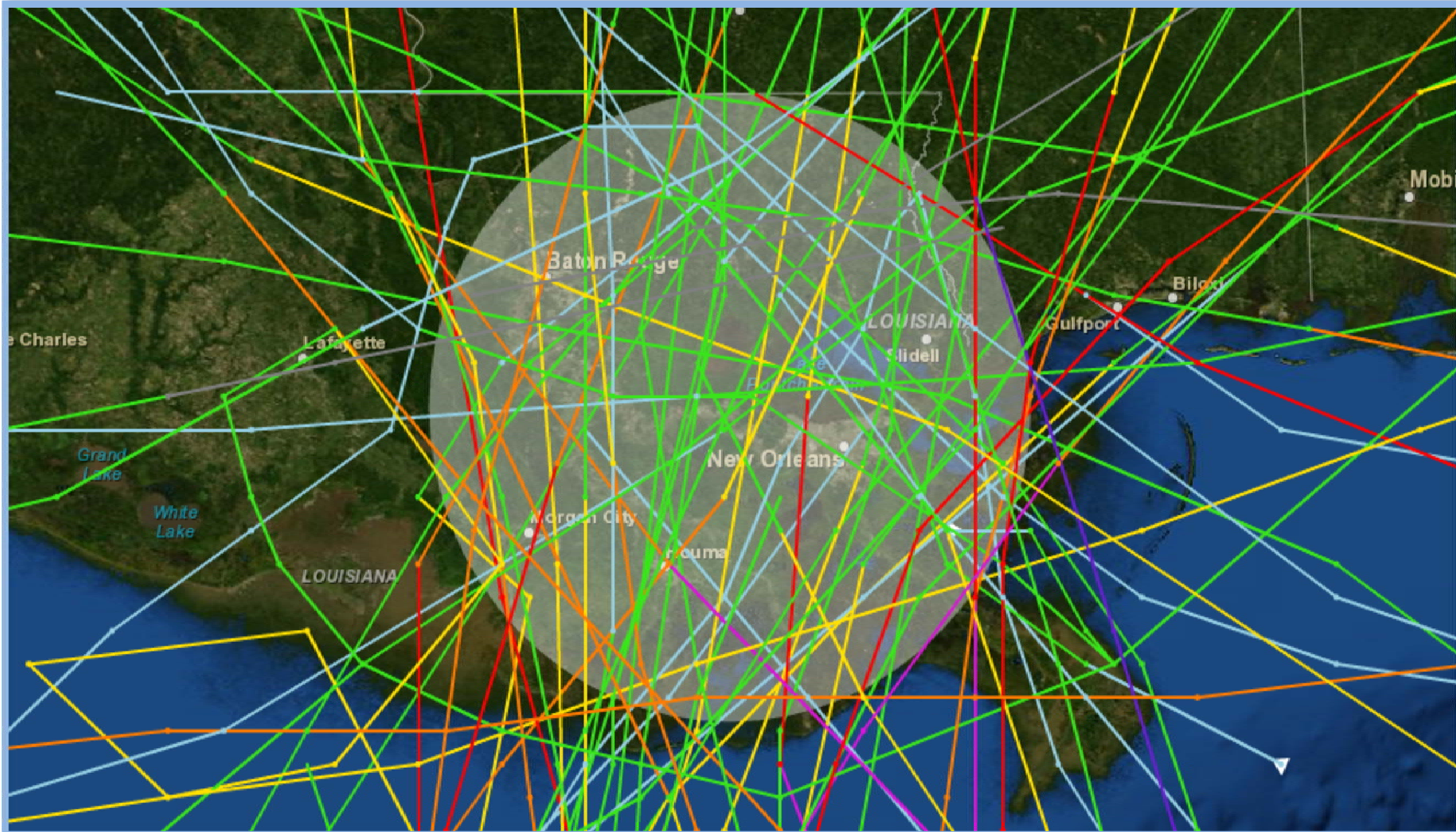


Figure 1-4: Hurricane tracks within 65 nautical miles of Laplace, Louisiana (NOAA 2013).

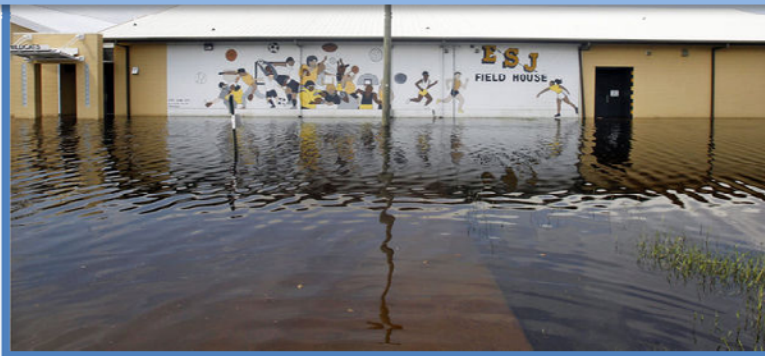


Figure 1-5: Hurricane Isaac flooding in Laplace, Louisiana (September 3, 2012, Getty Images & Times-Picayune).



2.0 AFFECTED ENVIRONMENT

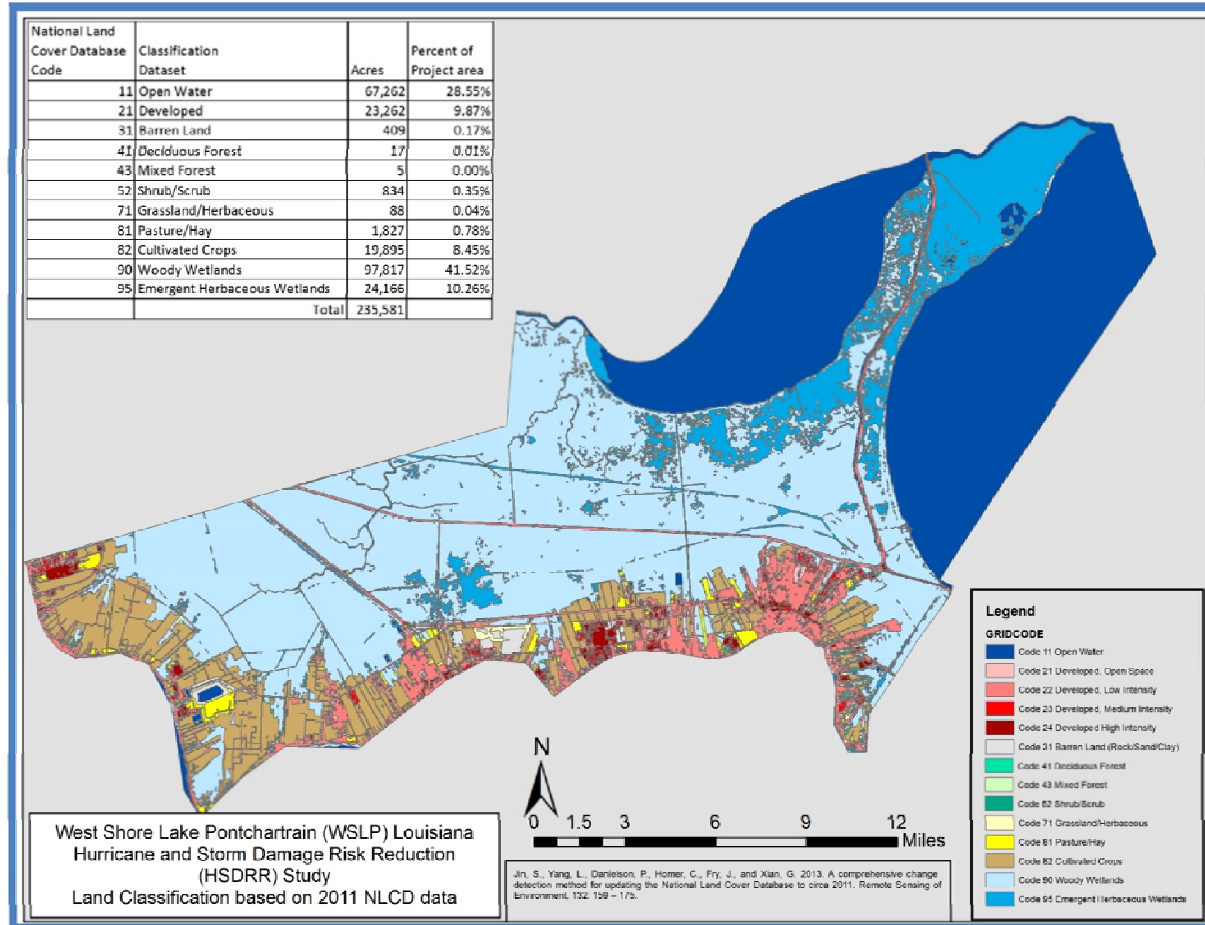


Figure 2-1: WSLP Land Classification Map.

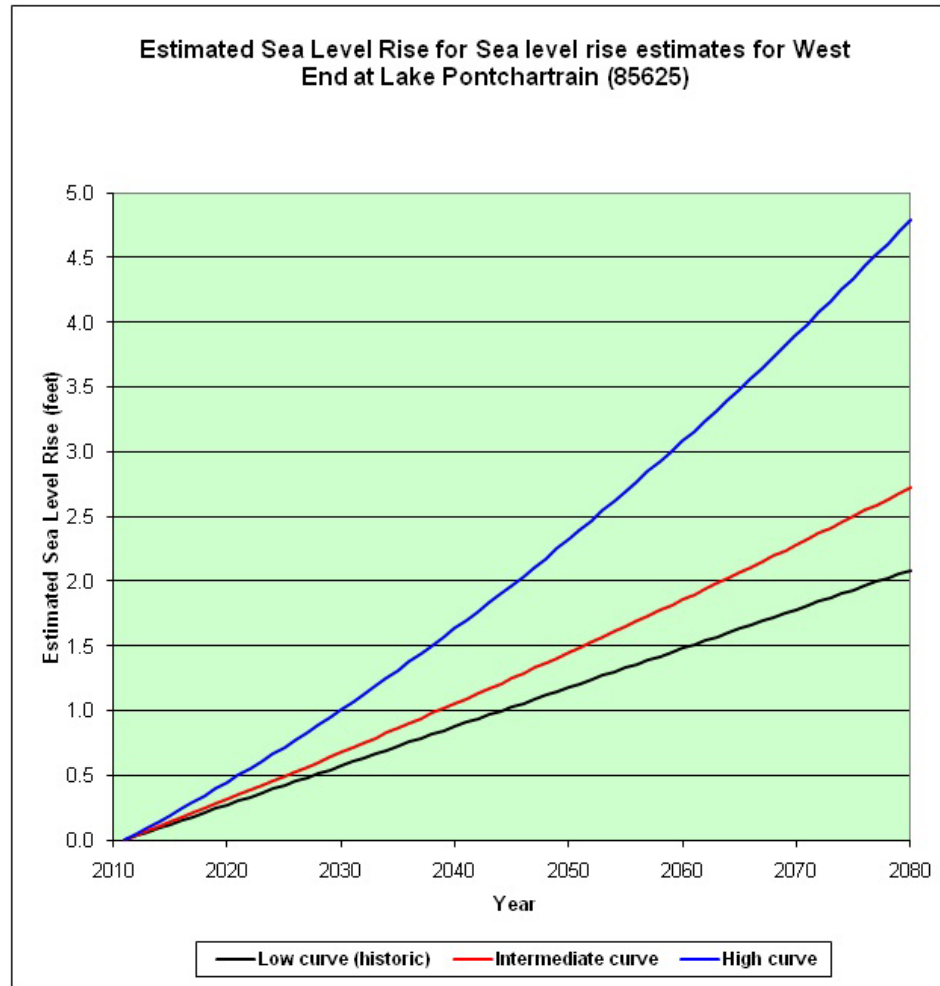


Figure 2-2: Relative sea level rise in the project area.



Figure 2-3: Hurricane Isaac storm surge flooding in Laplace.

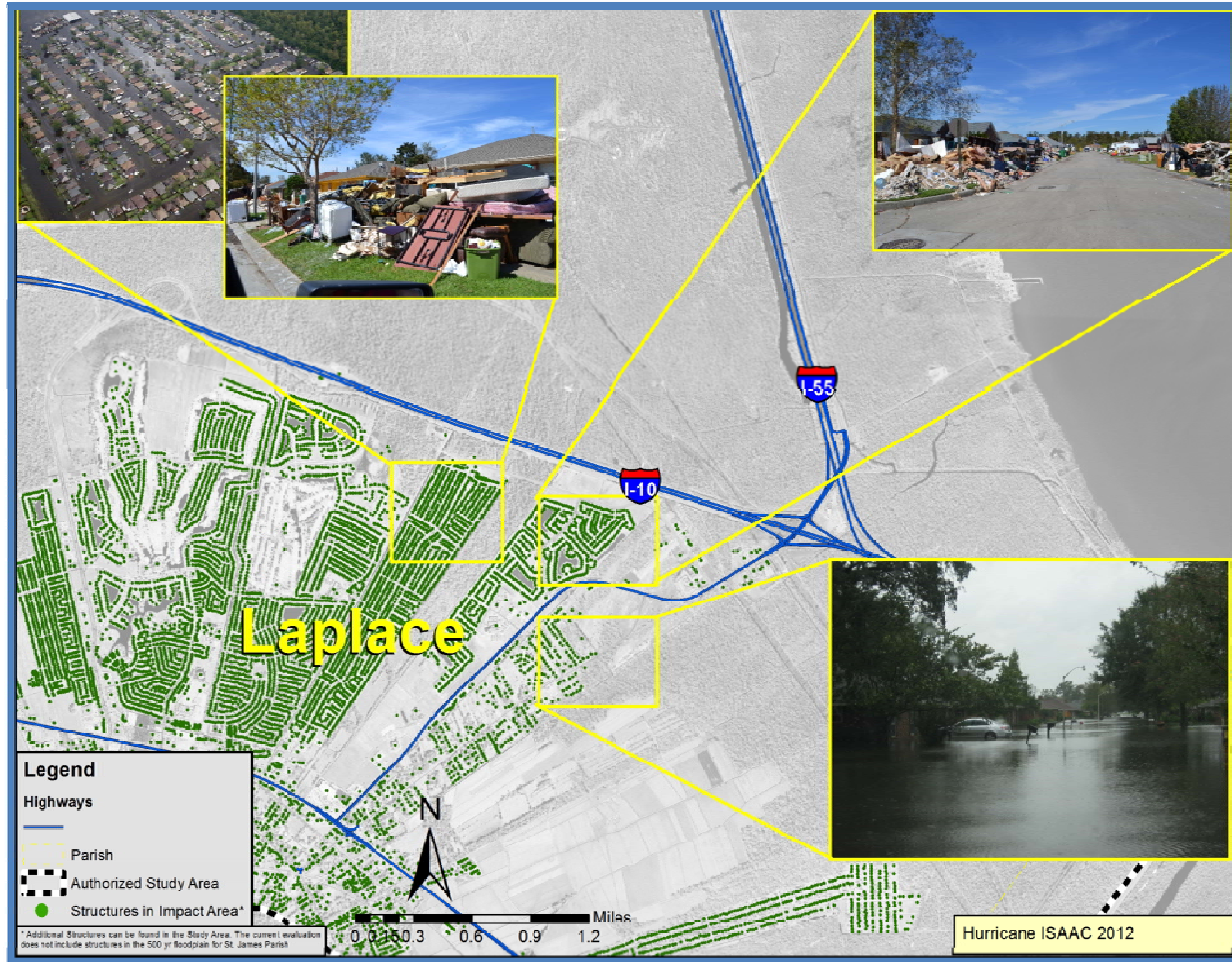
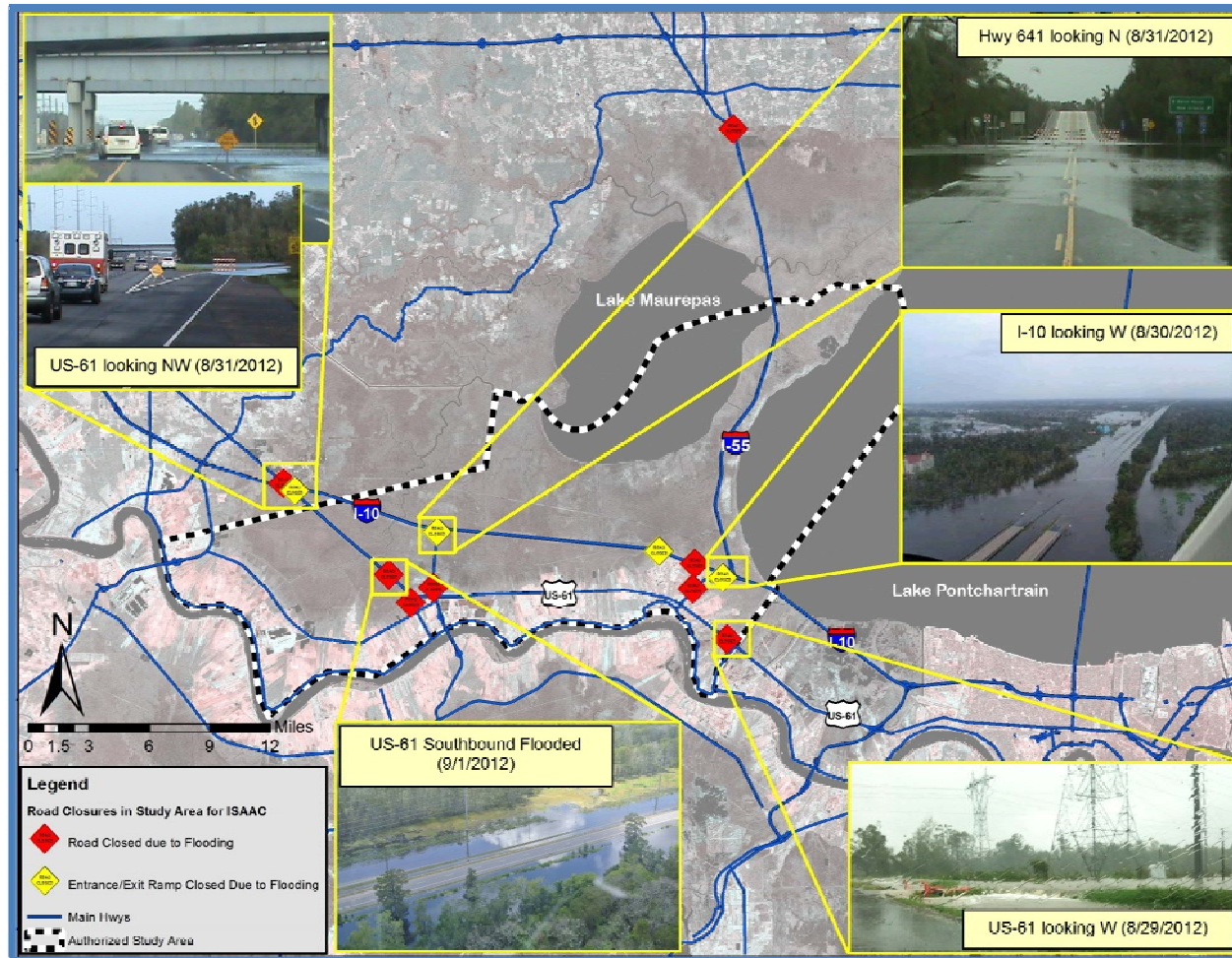




Figure 2-4: Hurricane Isaac storm surge flooding of important transportation routes.



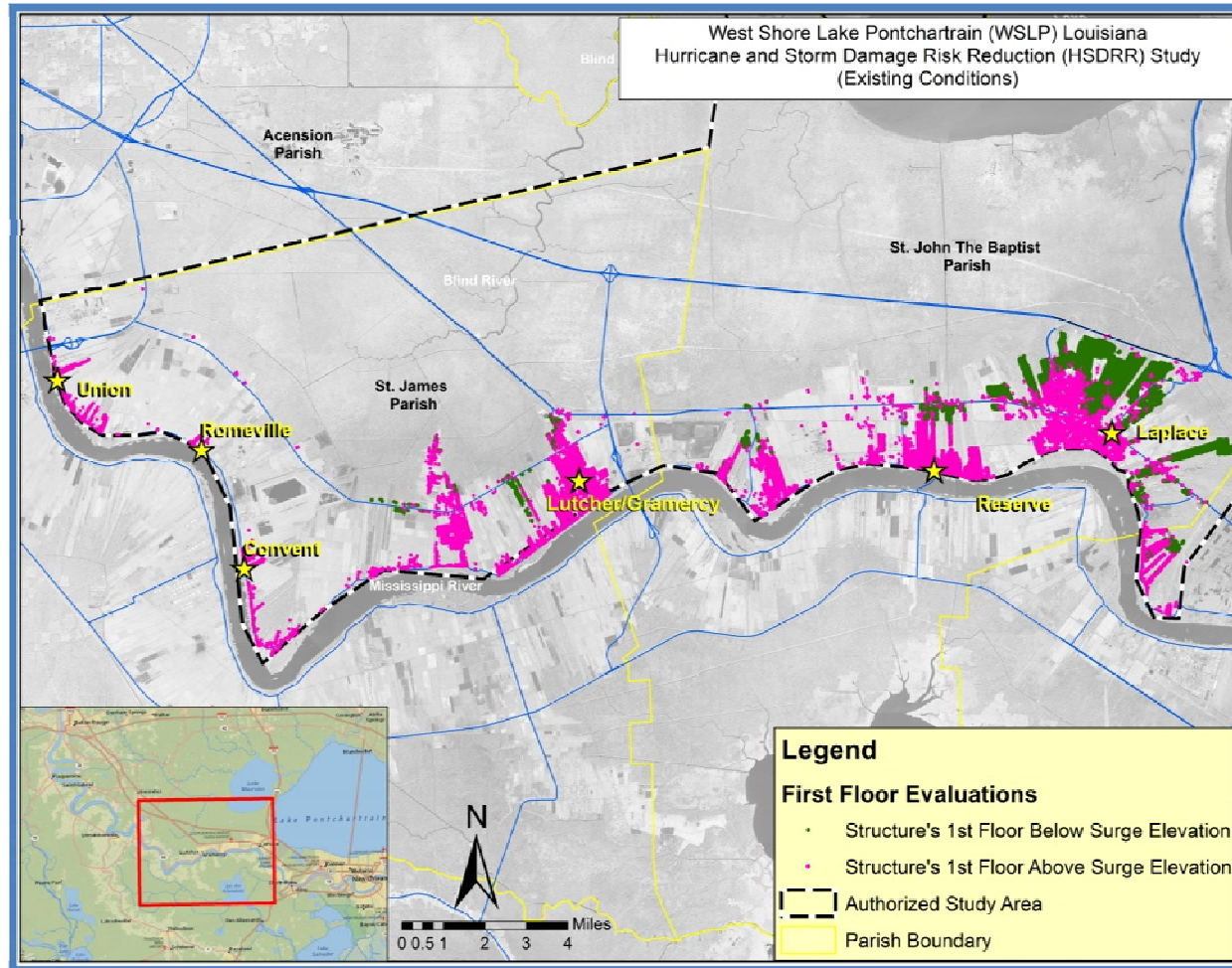


Figure 2-5: First floor evaluations (existing conditions).

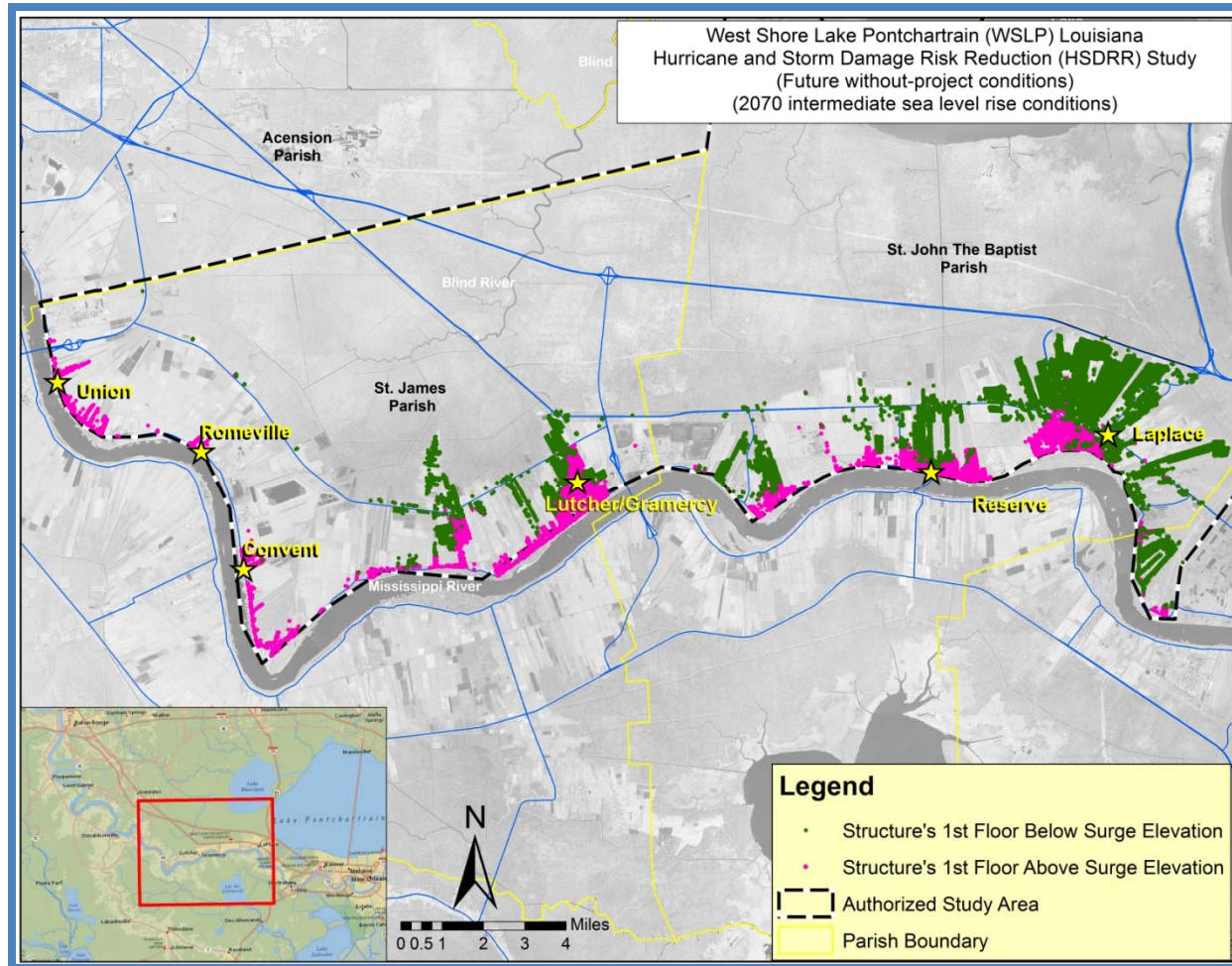


Figure 2-6: First floor evaluations (future without-project conditions).

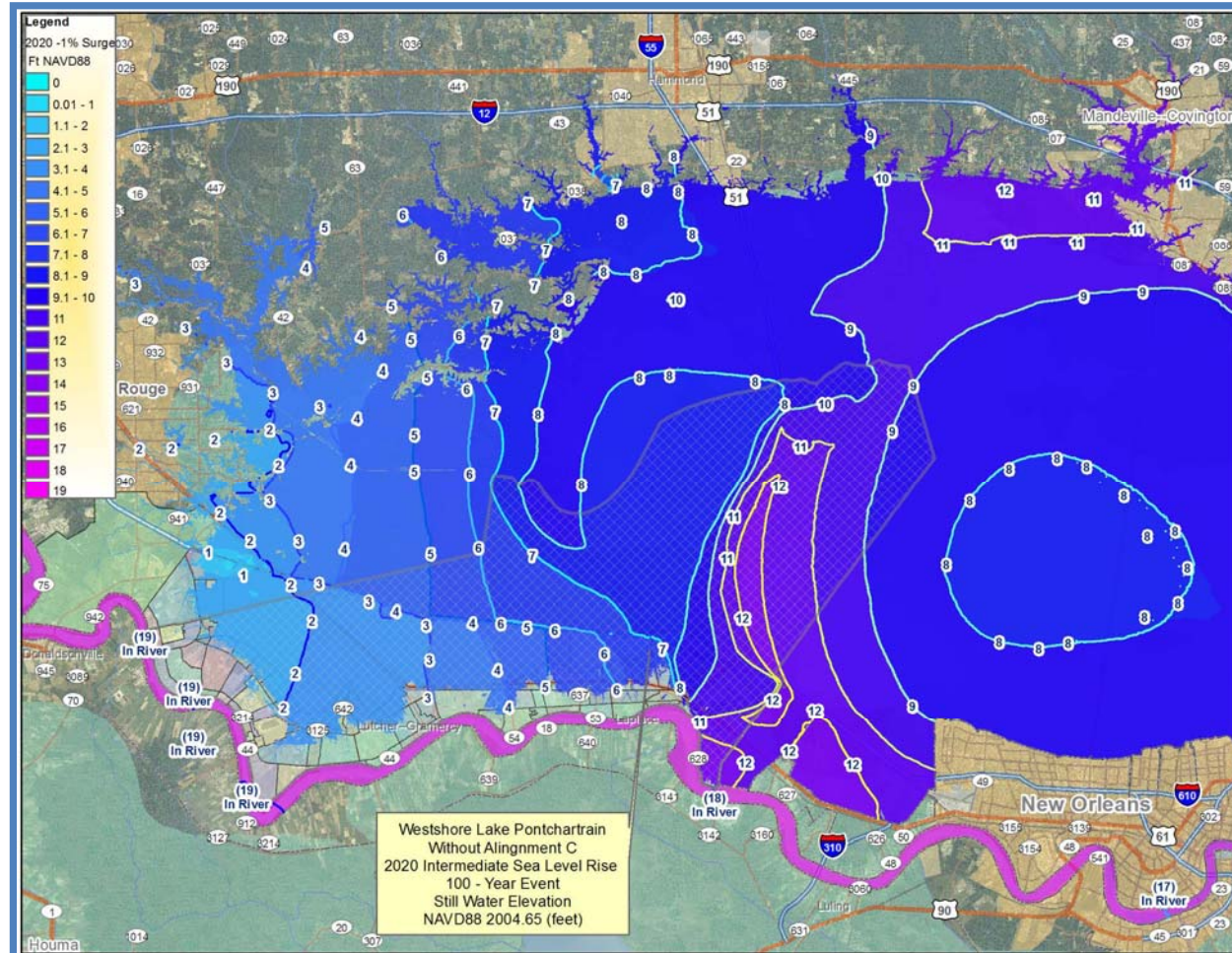


Figure 2-7: 100YR Still Water Elevations for 2020-Intermediate Condition – Without Project

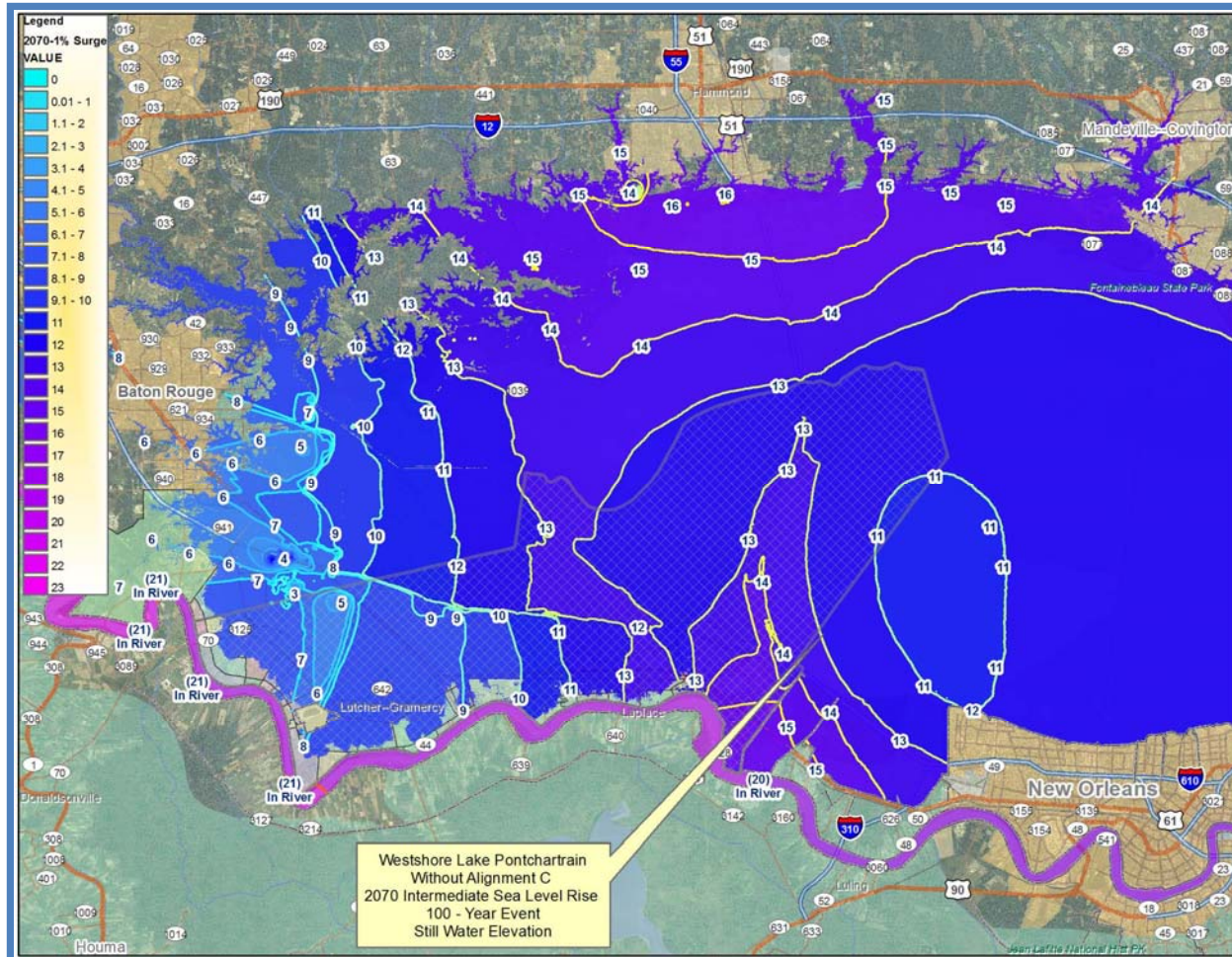


Figure 2-8: 100YR Still Water Elevations for 2070-Intermediate Condition – Without Project

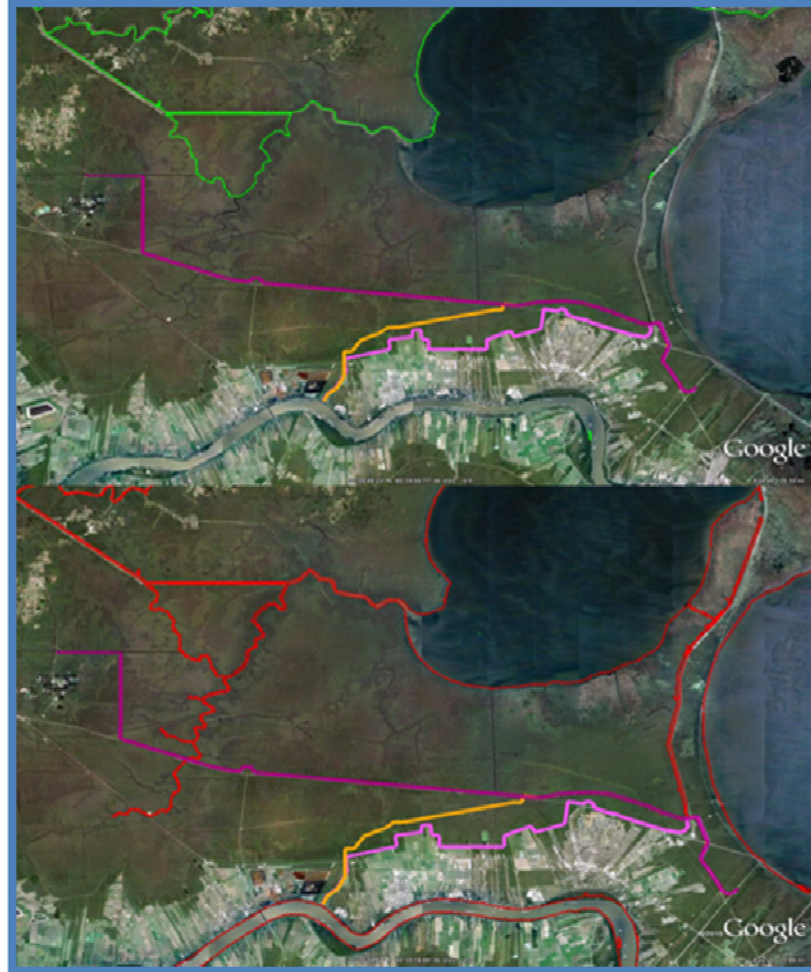


Figure 2-9: EFH for white shrimp (green) and red drum (red).

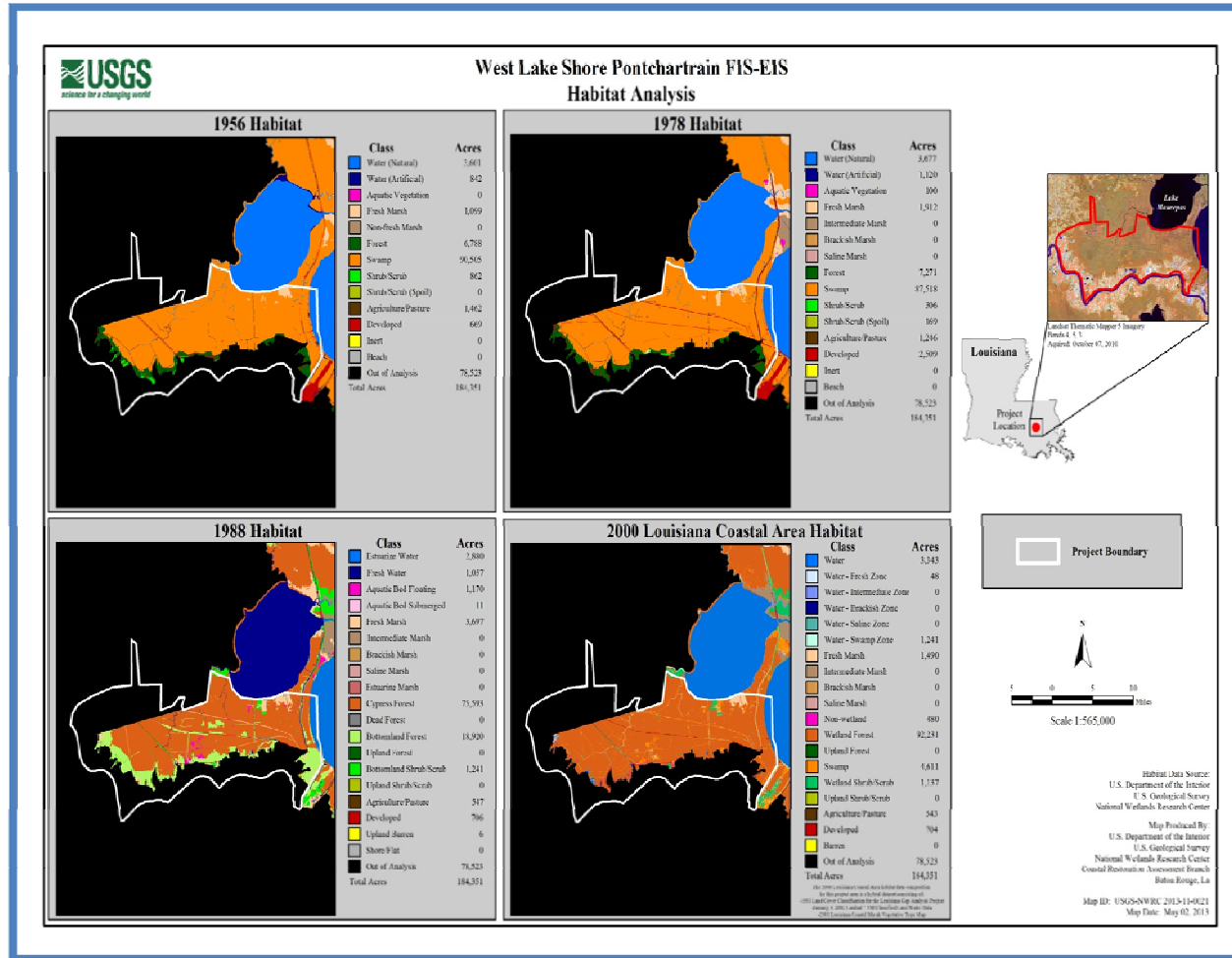


Figure 2-10: Habitats and land loss within the project area.



3.0 PLAN FORMULATION



Figure 3-1: Typical levee, floodwall (T-wall) and control structure.

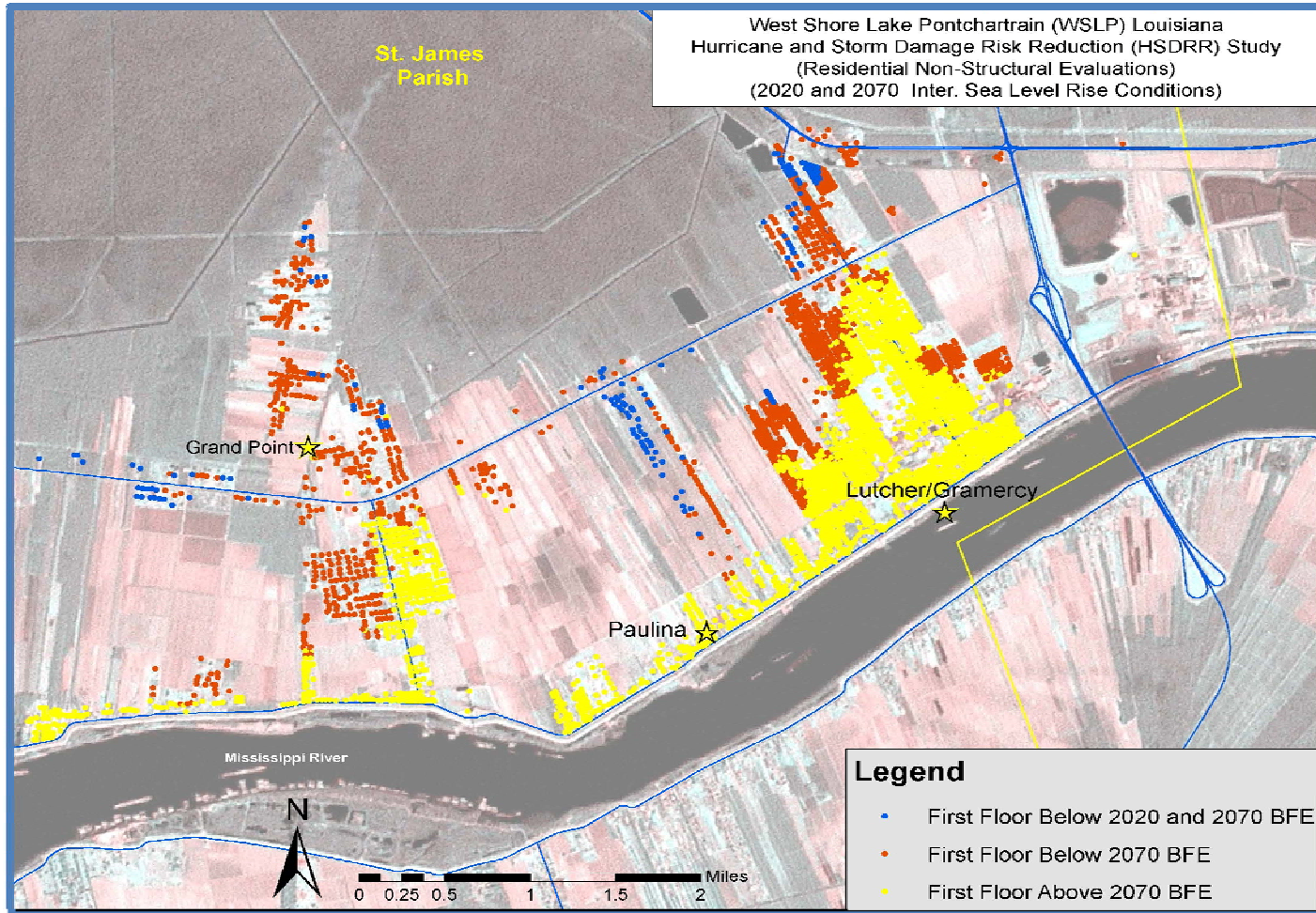


Figure 3-2: Supplemental nonstructural plan area in St. James Parish.

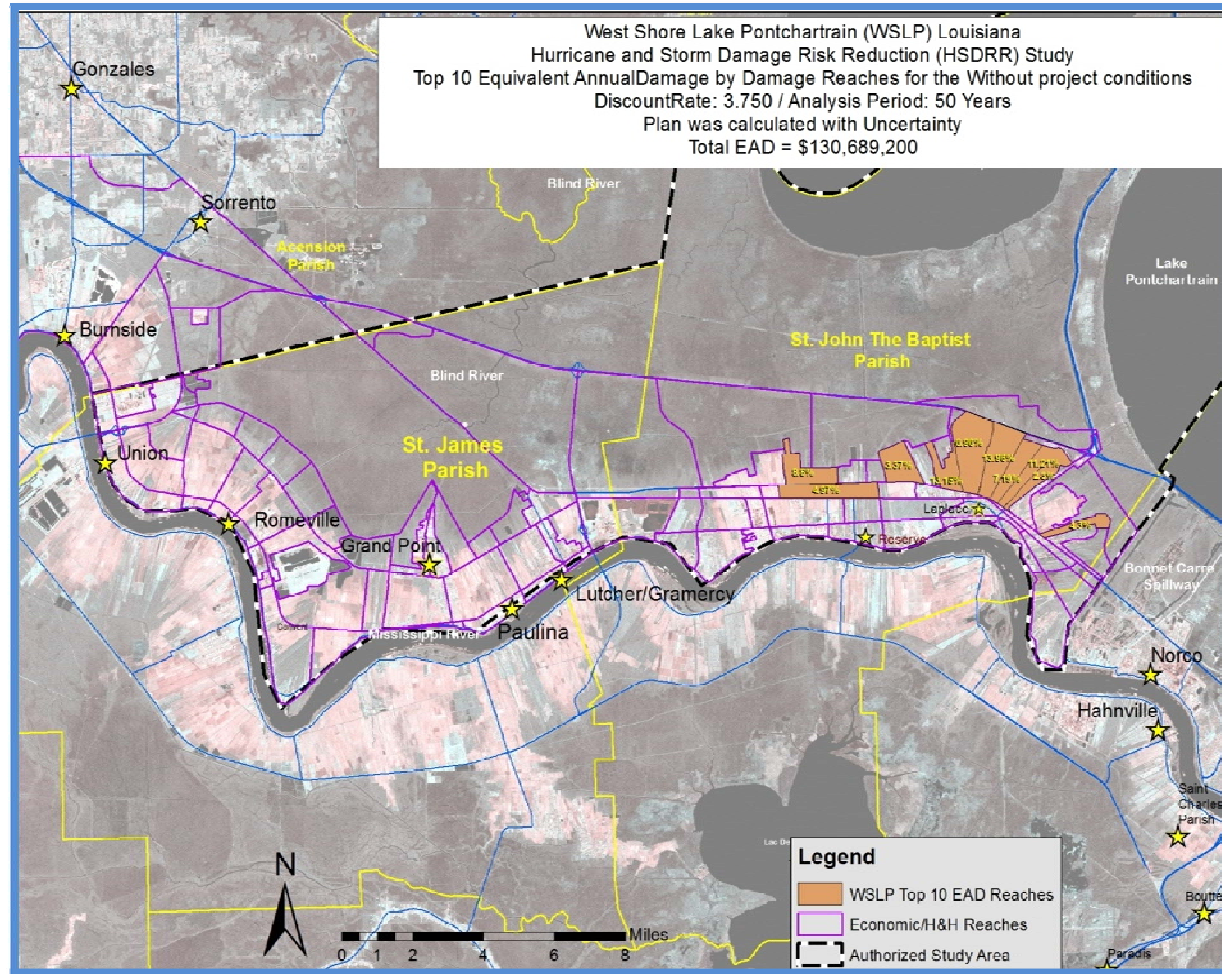


Figure 3-3: Economic reaches, FWOP condition.

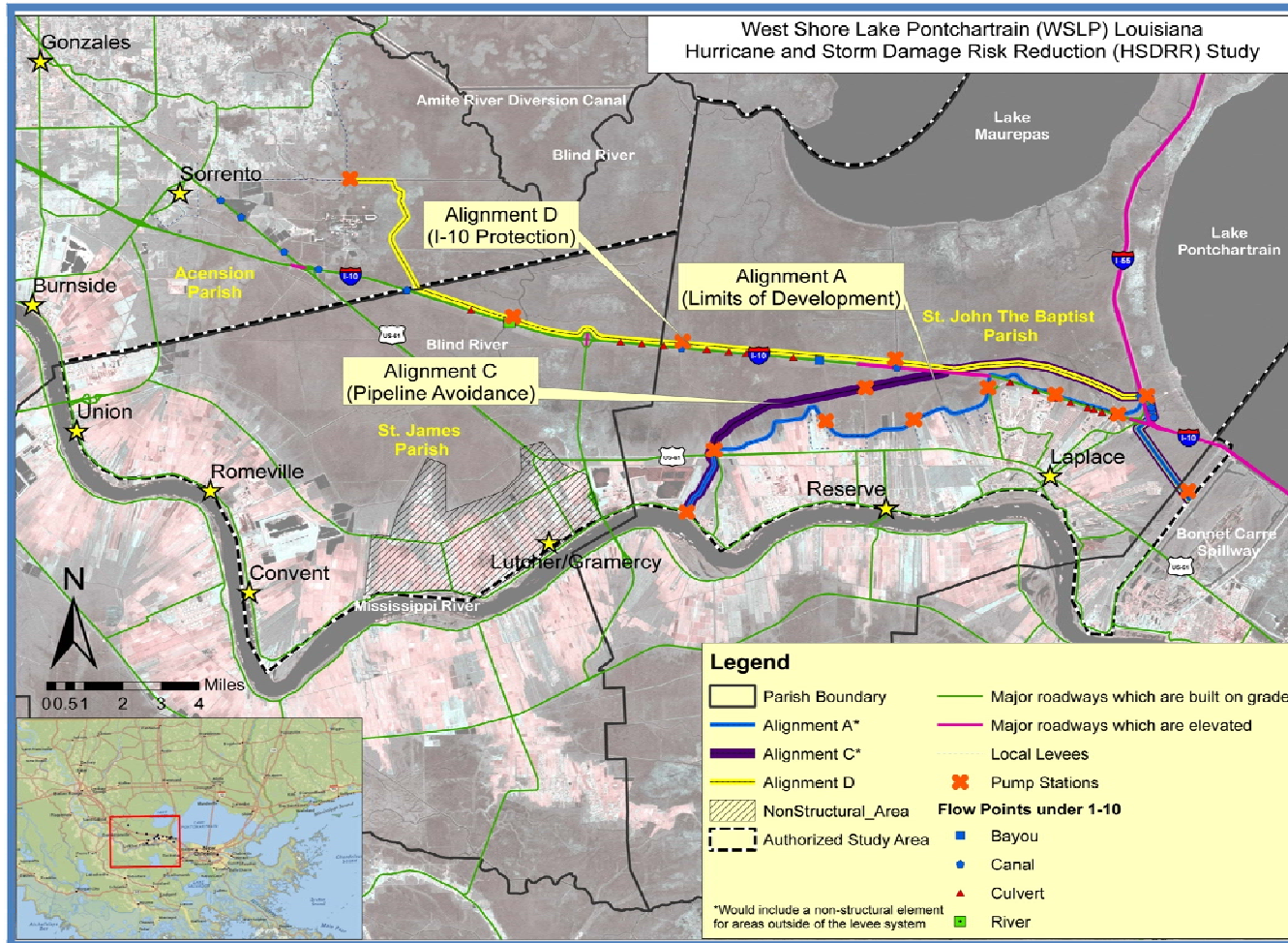


Figure 3-4: Final array of alternative plans.

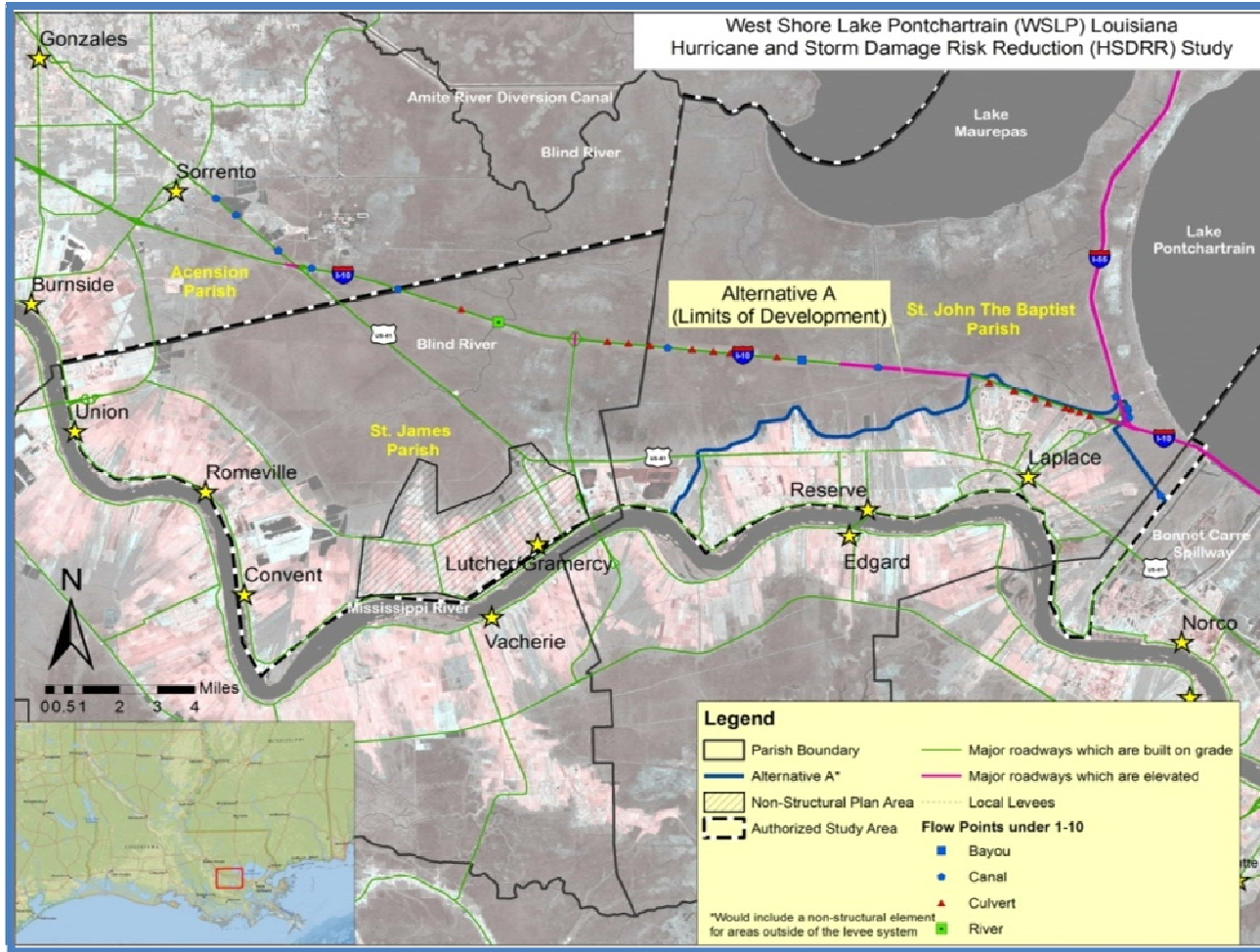


Figure 3-5: Alignment and features of Alternative A.

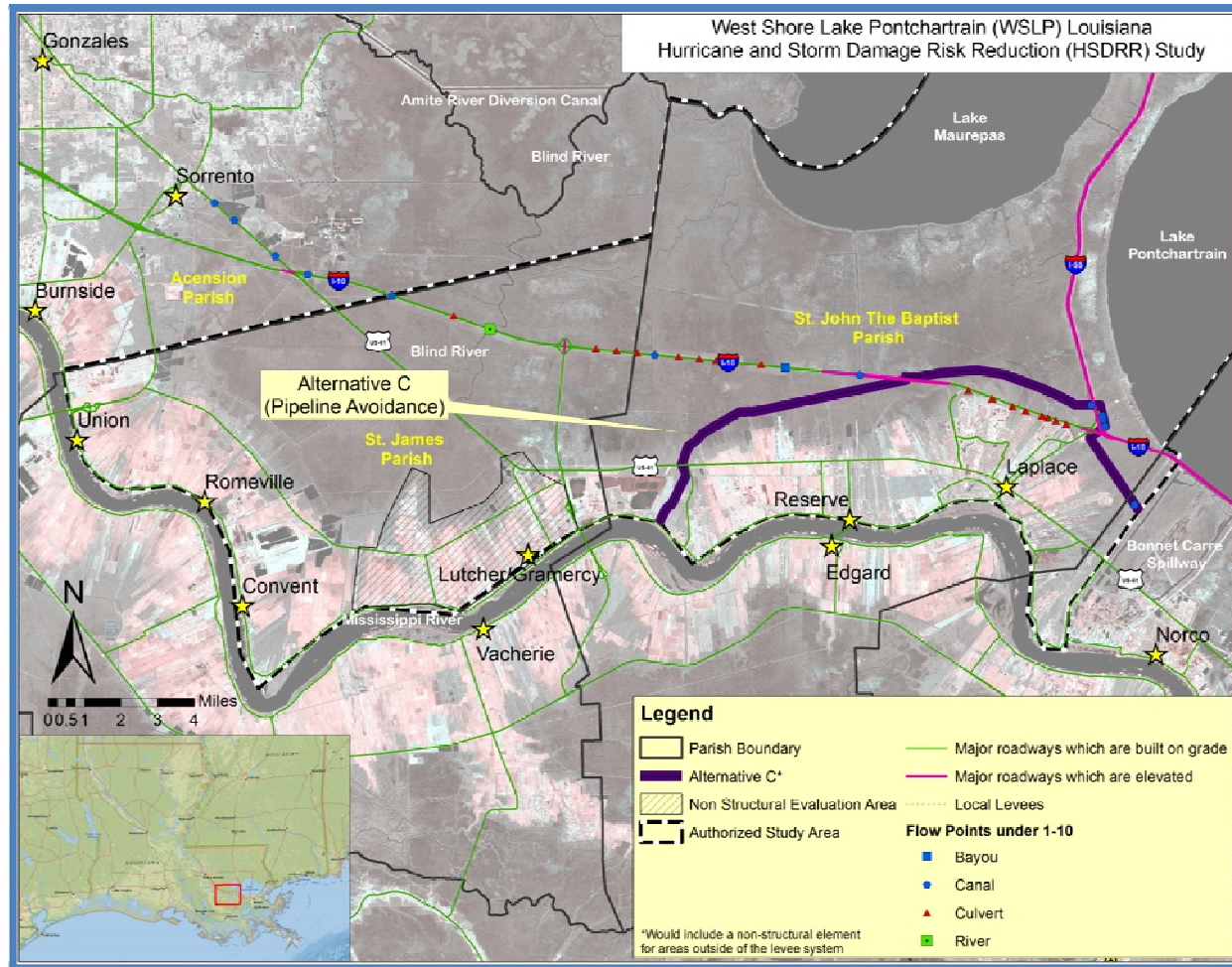


Figure 3-6: Alignment and features of Alternative C.

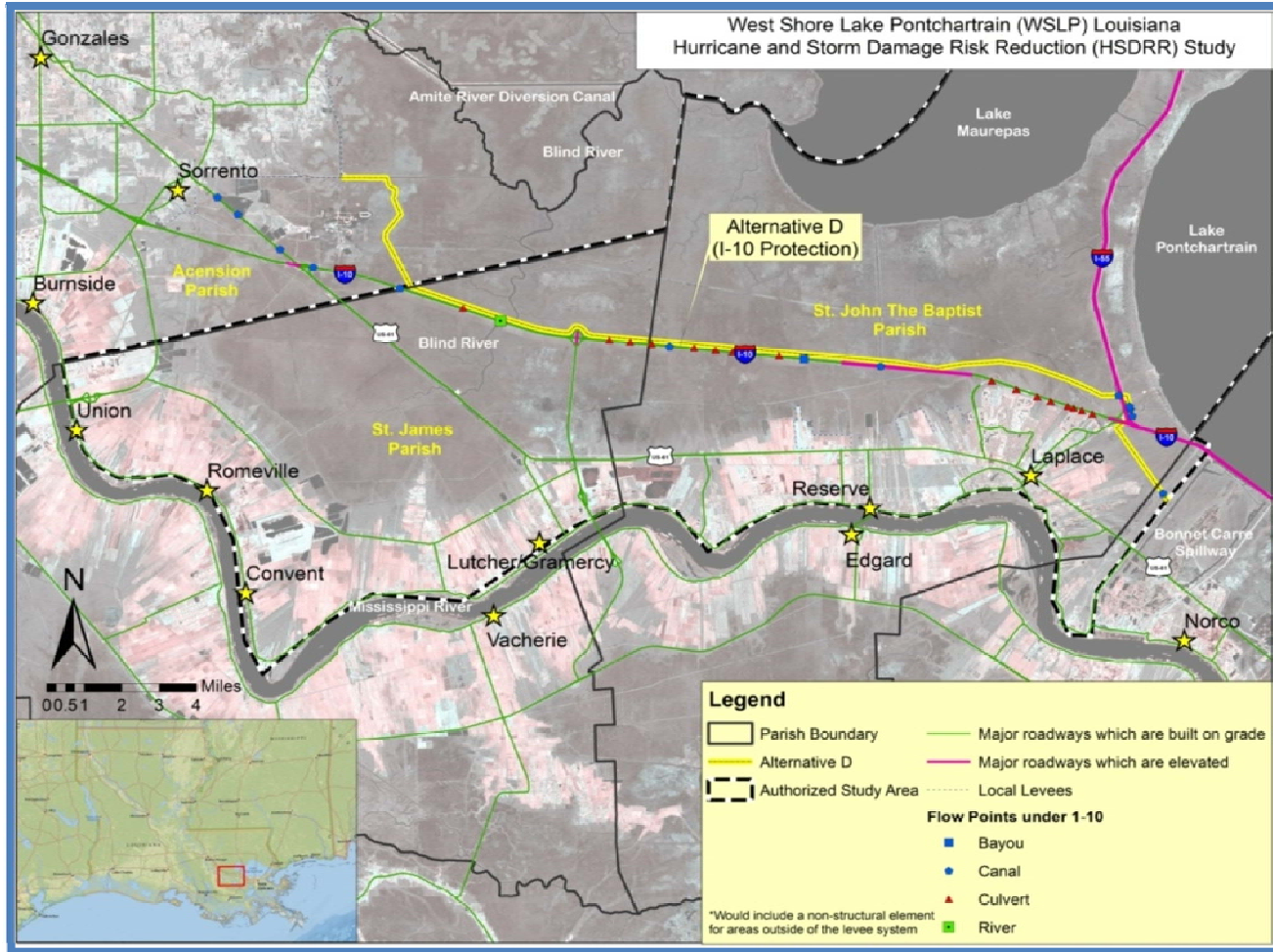


Figure 3-7: Alignment and features of Alternative D.

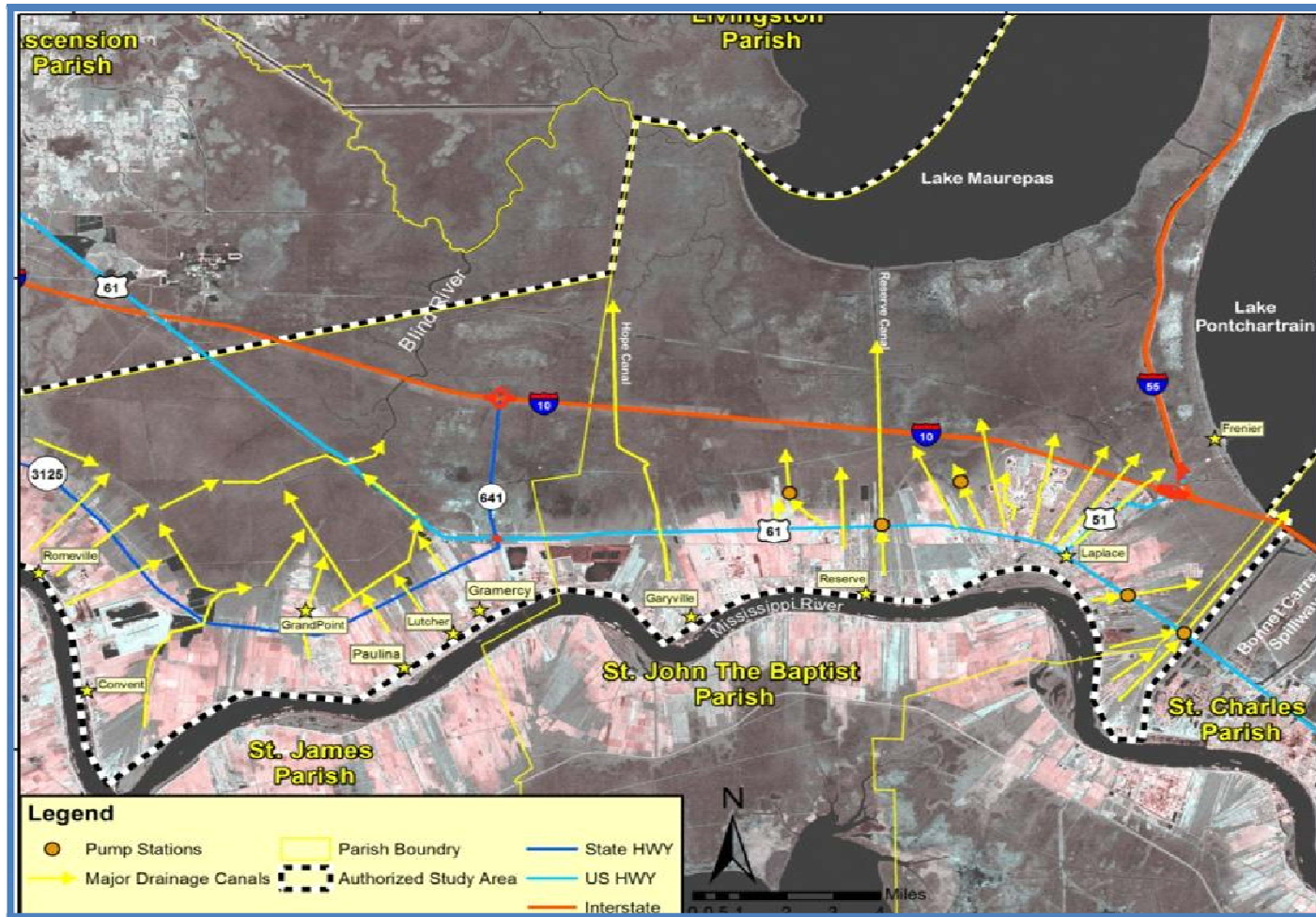


Figure 3-8: Study area drainage patterns.

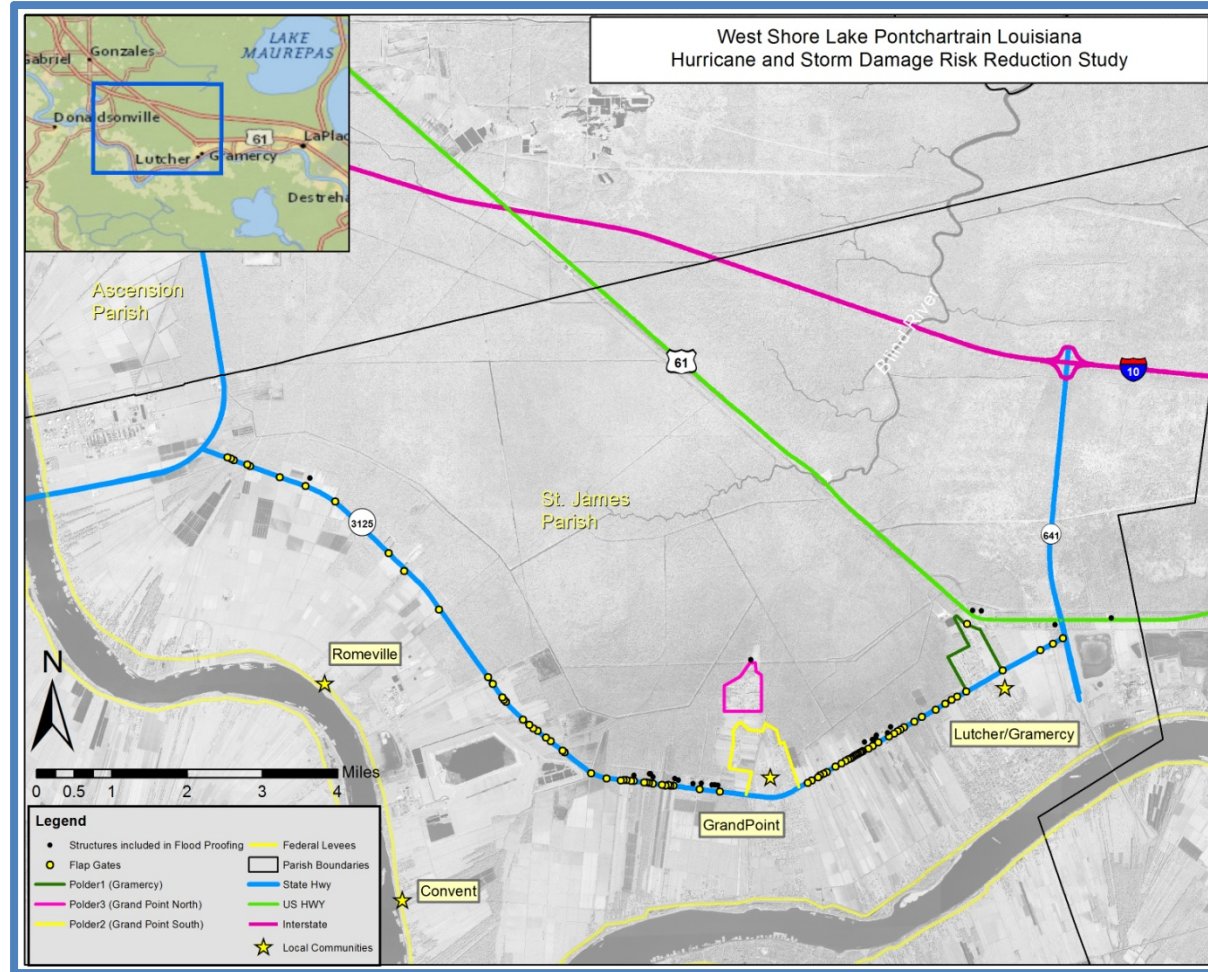


Figure 3-9: Details of further developed localized storm surge risk reduction component

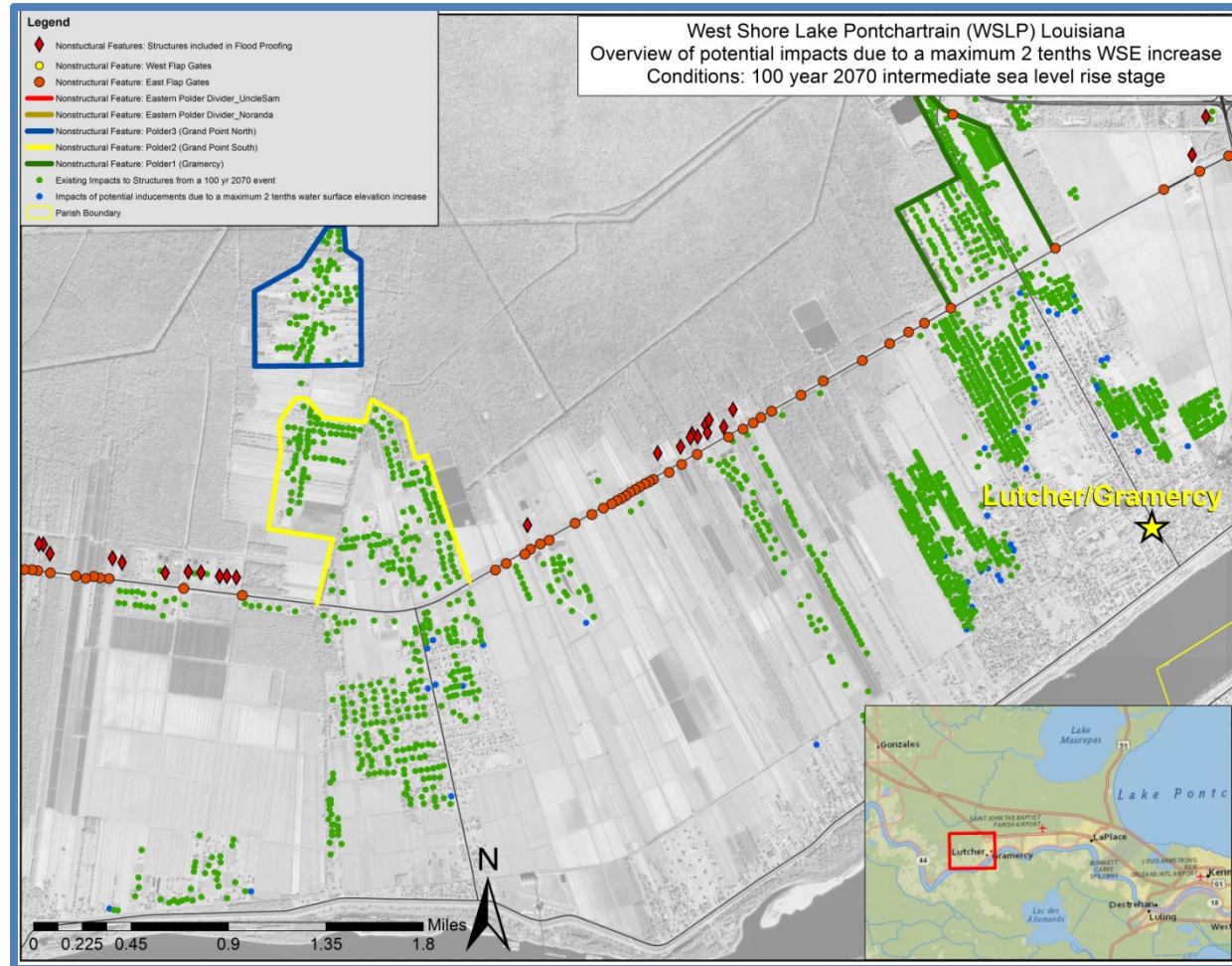


Figure 3-10: Overview of potential impacts due to a maximum 2th WSE increase.

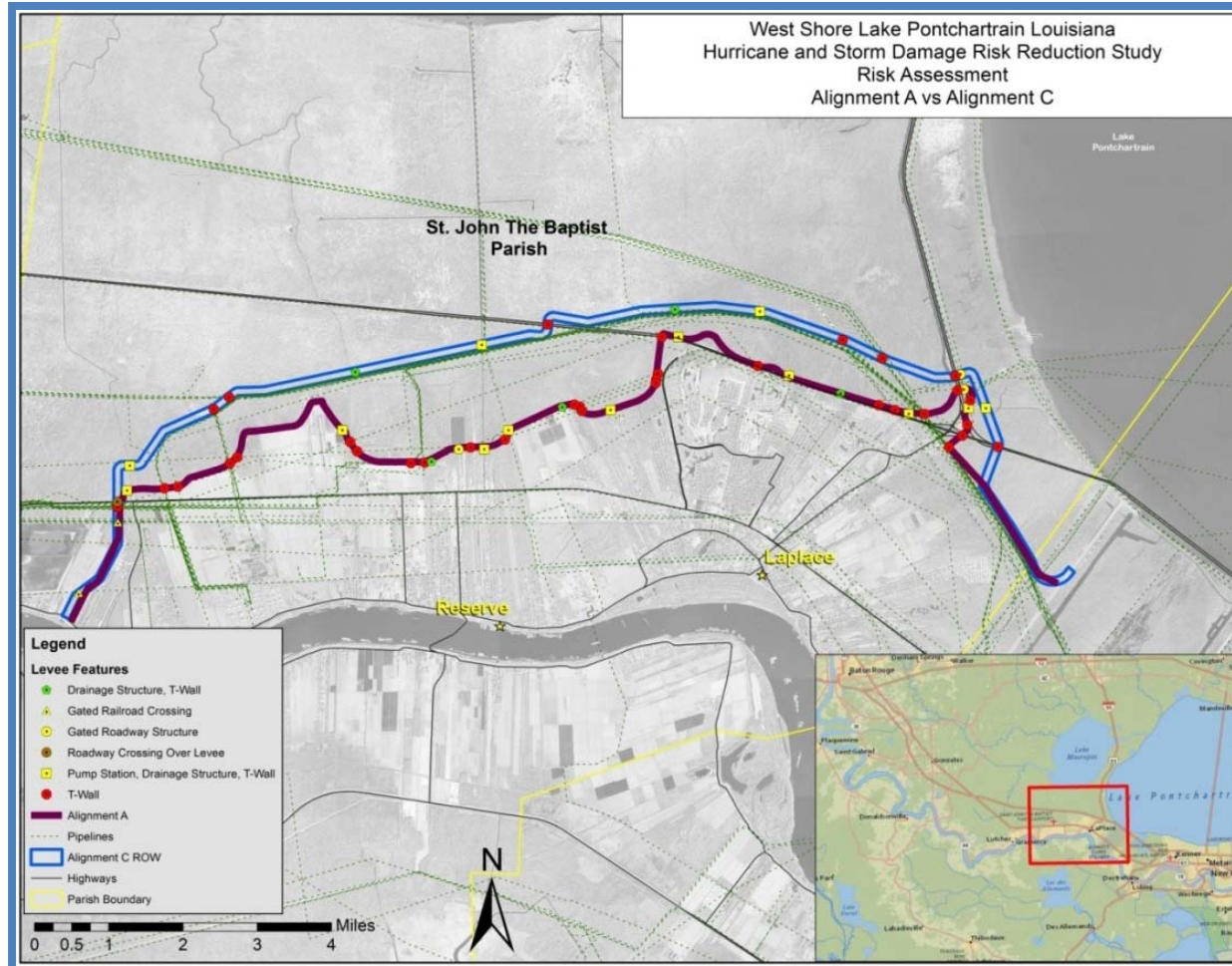


Figure 3-11: Capability Assessment of Alternative A.



4.0 ENVIRONMENTAL CONSEQUENCES (*NEPA REQUIRED)

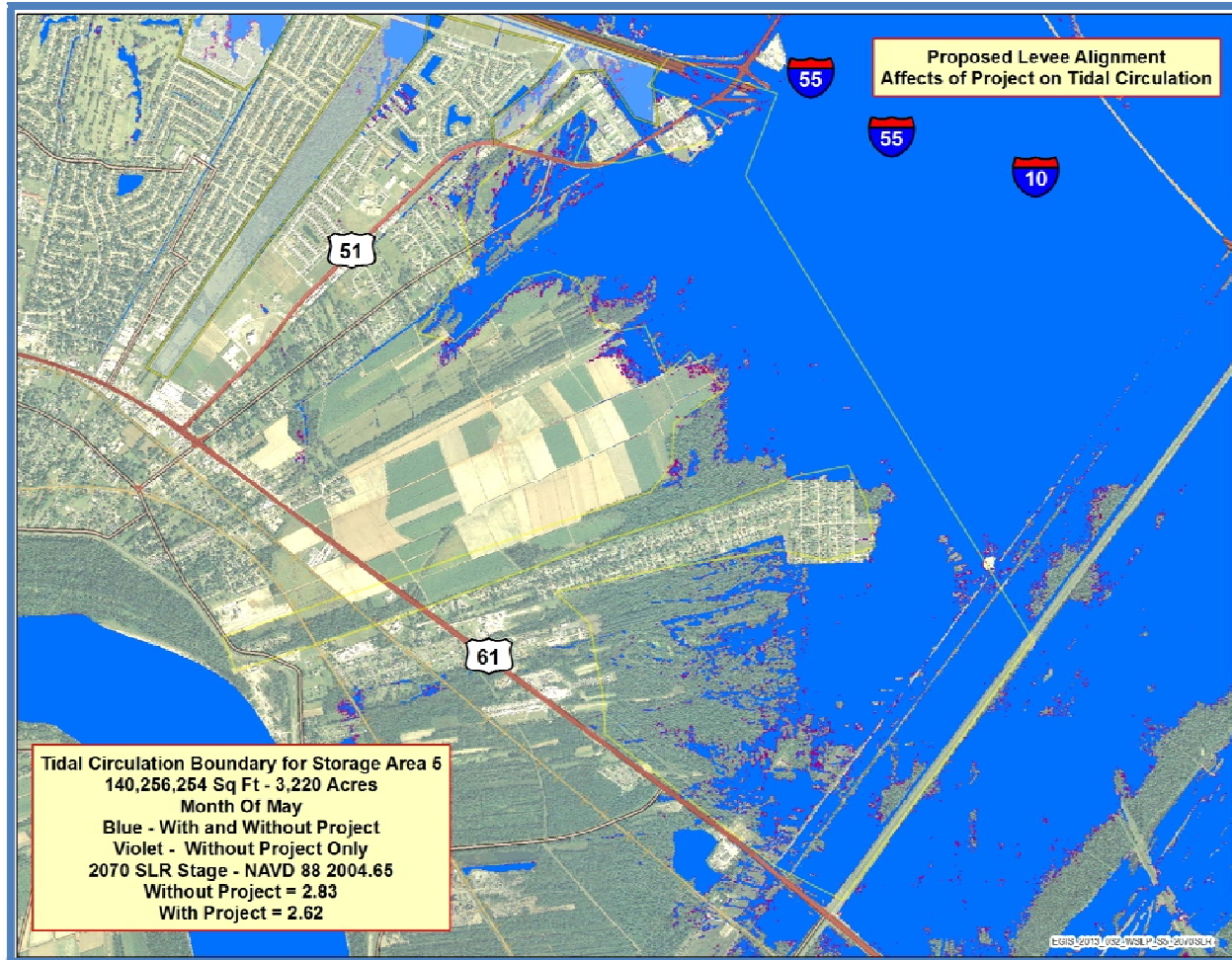


Figure 4-1: Model results of with and without proposed levee alignment affects on tidal circulation.

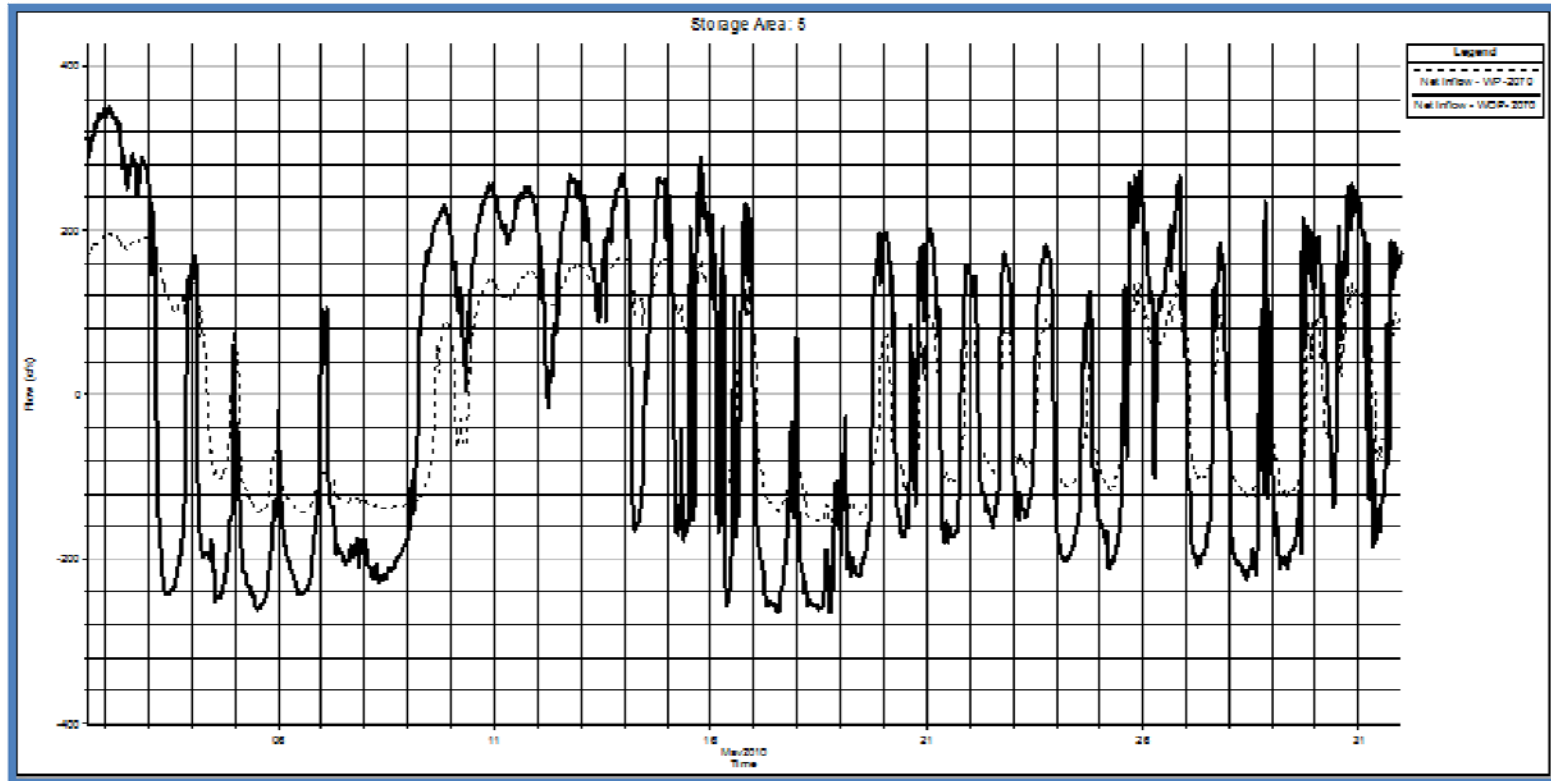


Figure 4-2: Modeling simulation flows during month of May for Area 5 (near Bonnet Carré guide levee).

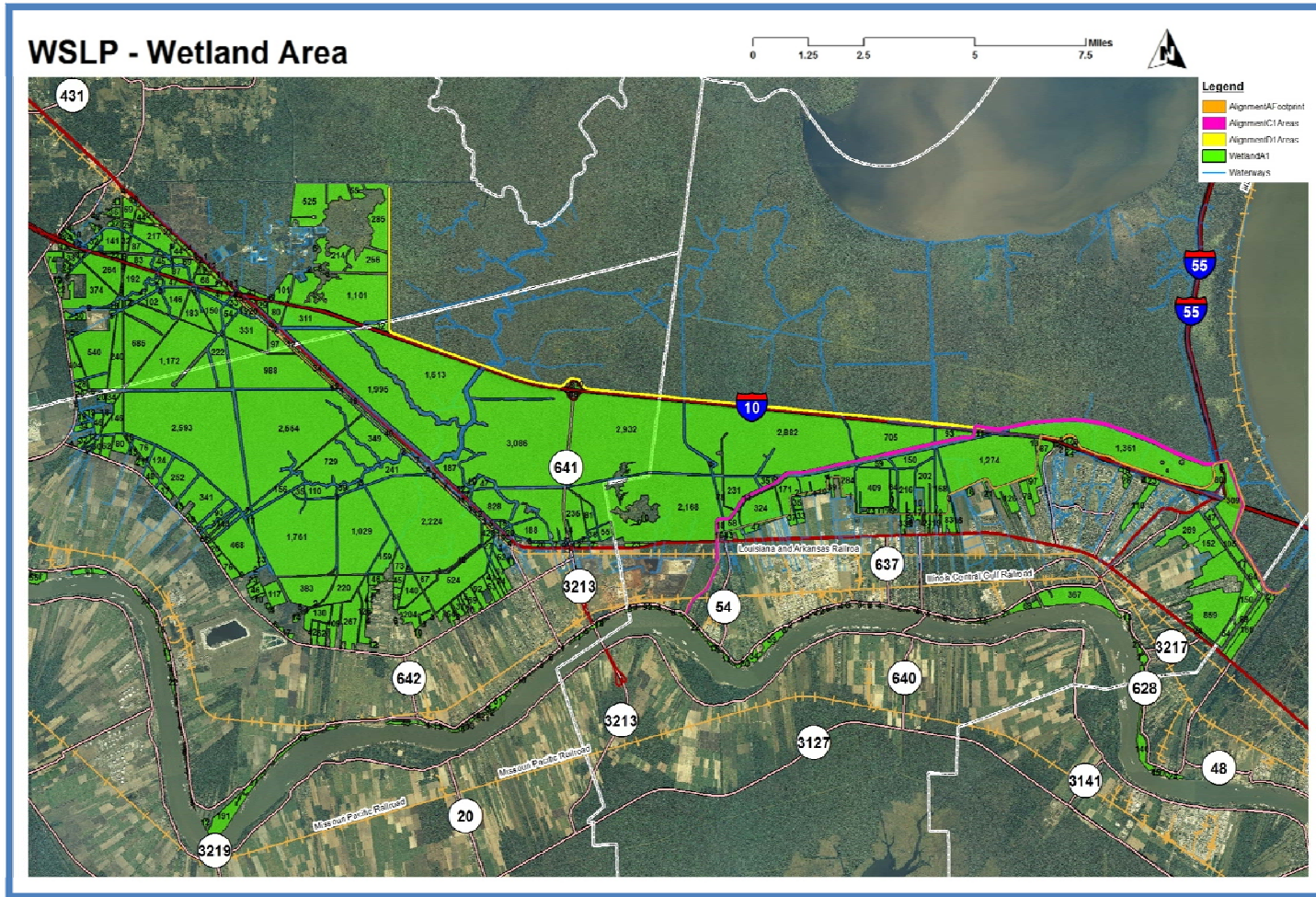


Figure 4-3: Wetland areas within each alternative in the final alternative array.



5.0 RECOMMENDED PLAN (PREVIOUSLY TENTATIVELY SELECTED PLAN) (*NEPA REQUIRED)

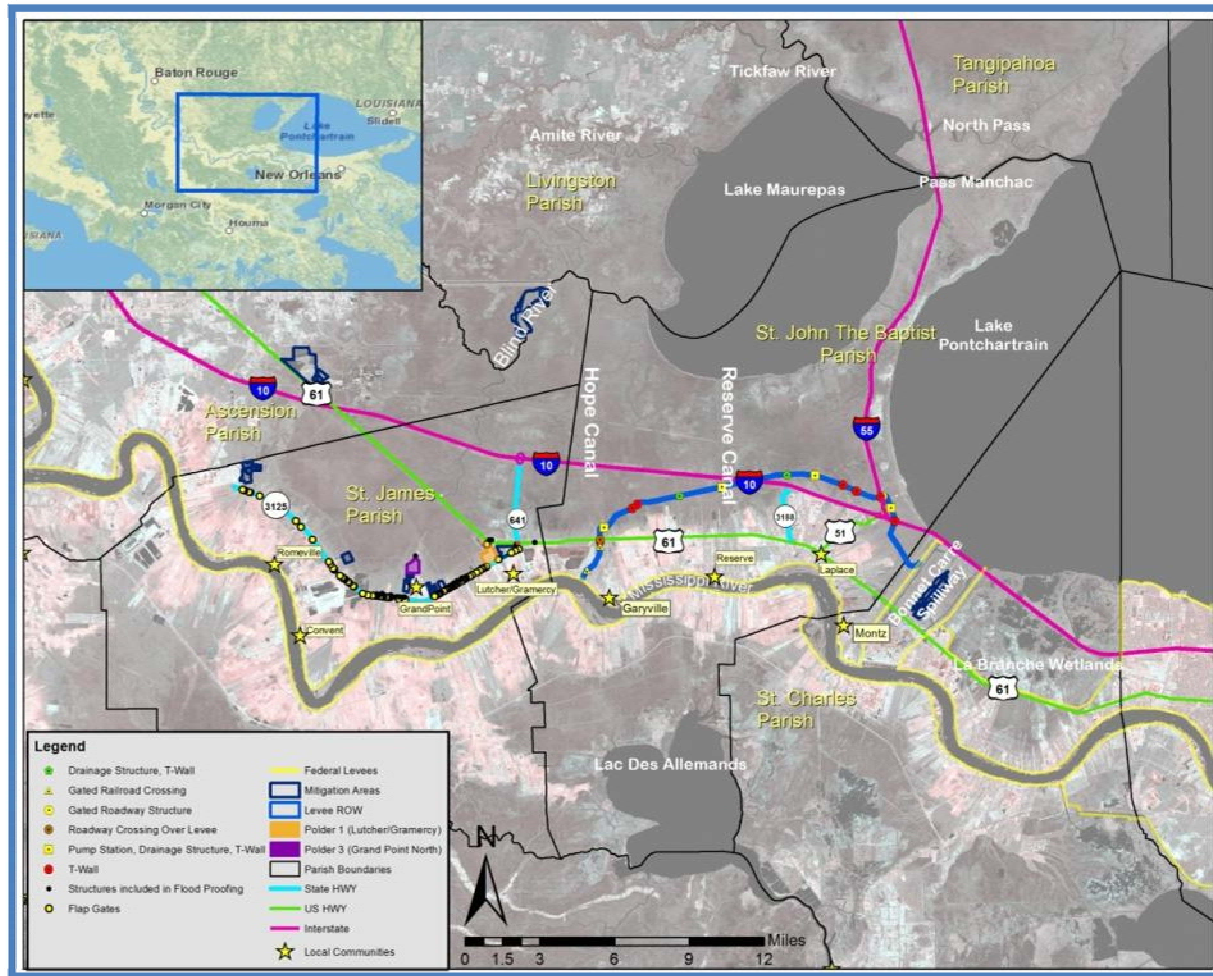


Figure 5-1: Overview of the entire risk reduction system.

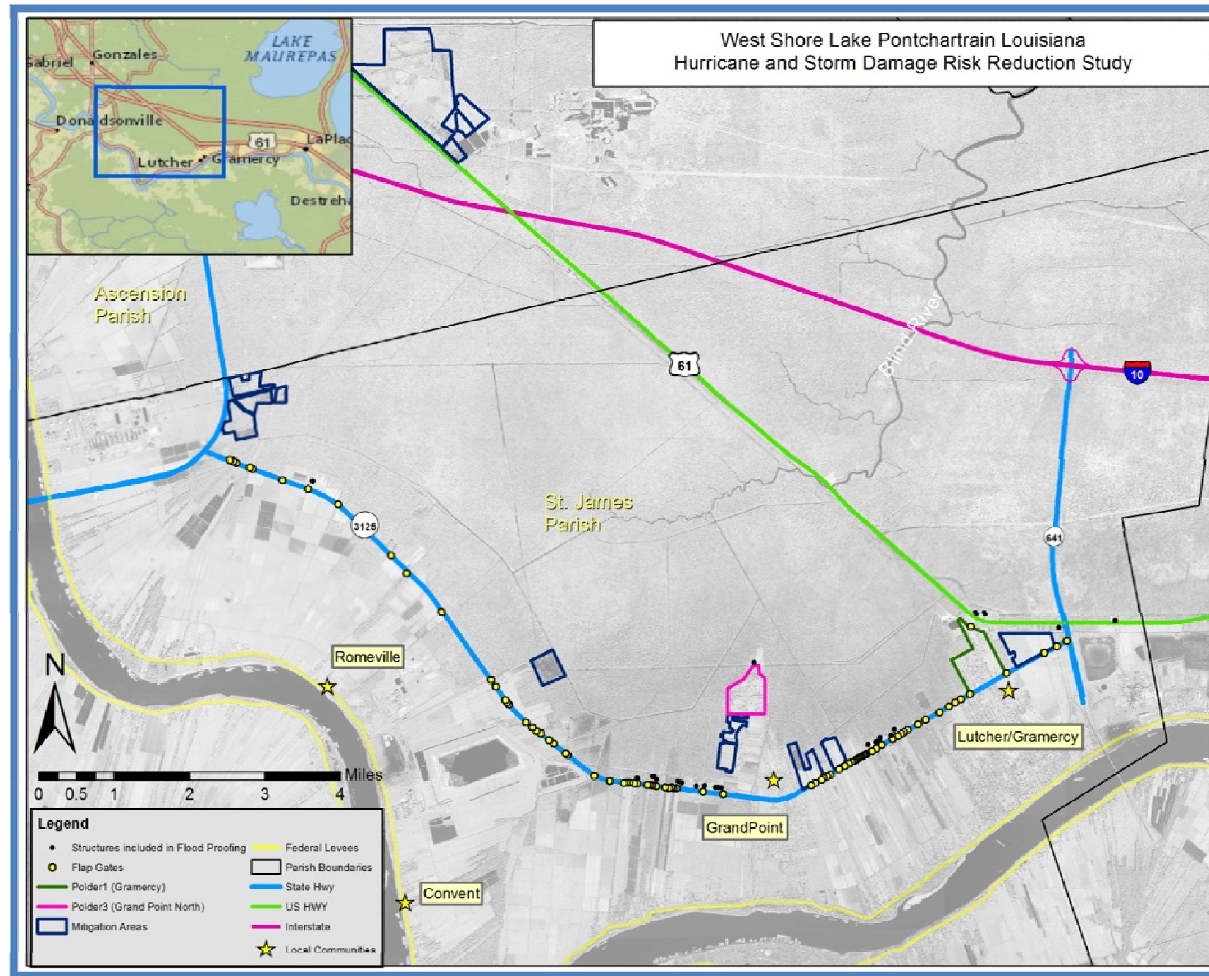


Figure 5-2: Overview of the Localized Storm Surge Risk Reduction System.

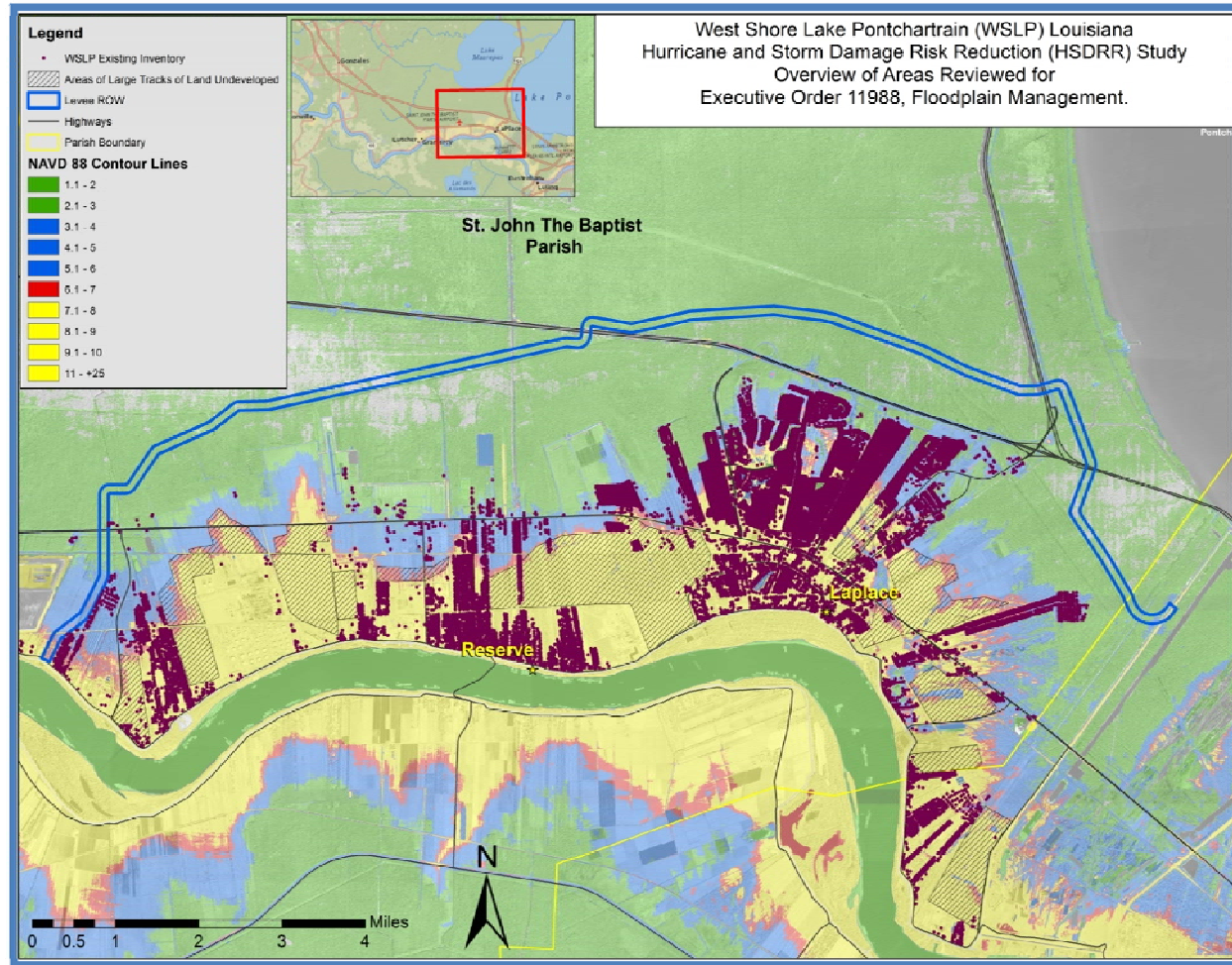


Figure 6-1: Overview of the areas reviewed for Executive Order 11988, Floodplain Management.