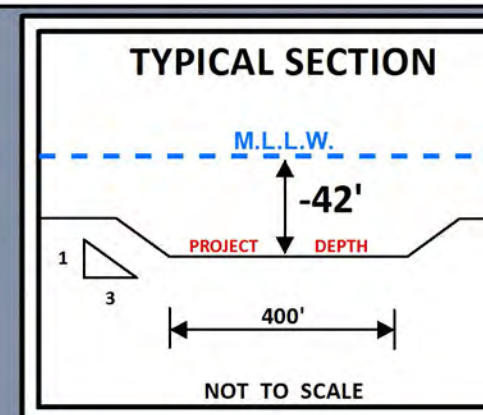
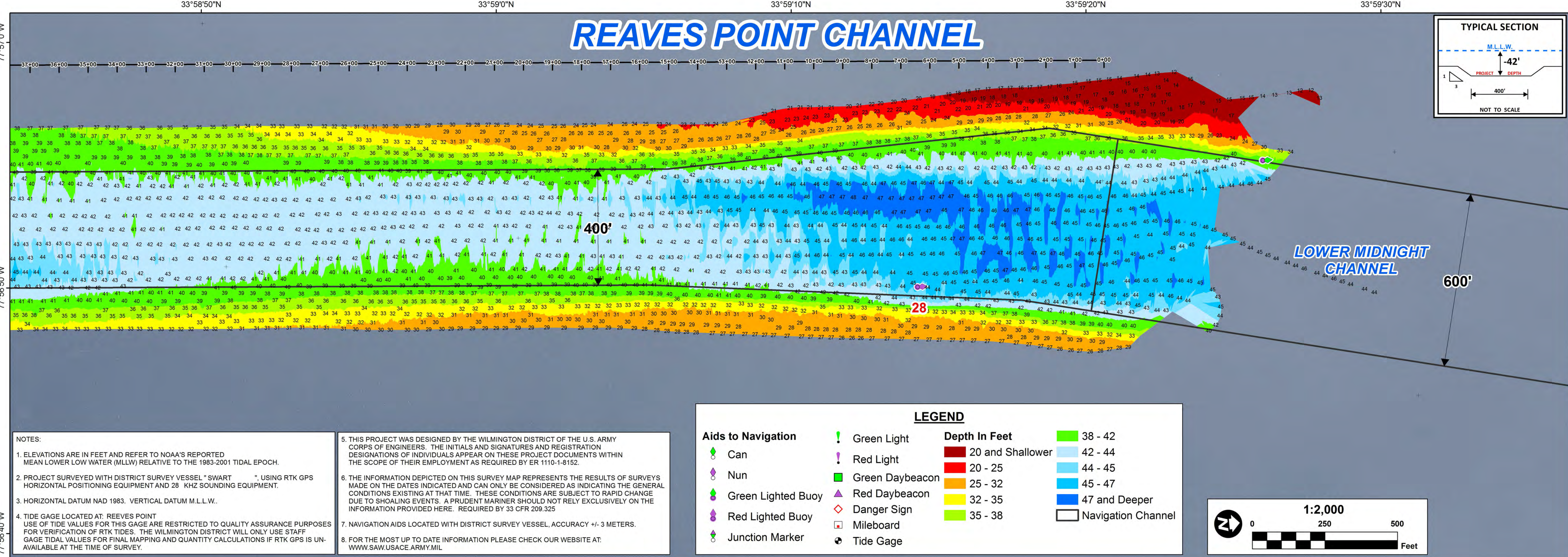
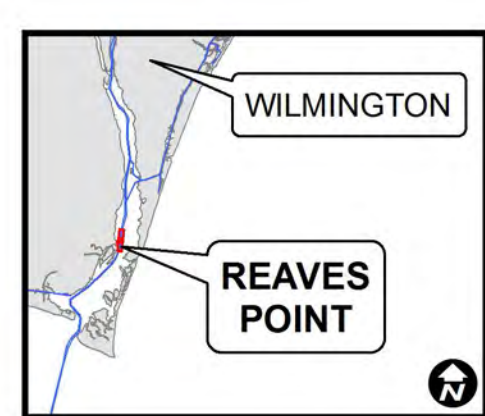
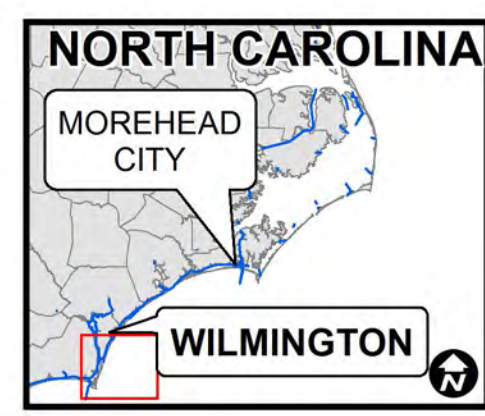


REAVES POINT CHANNEL



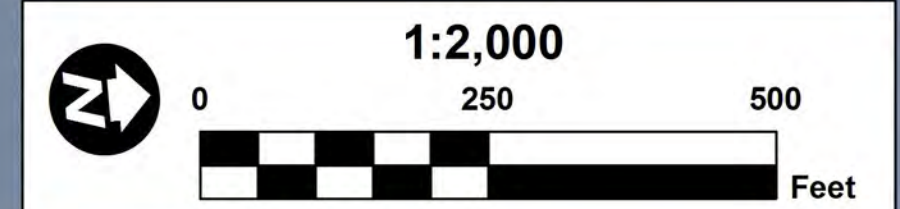
US Army Corps of Engineers
Wilmington District



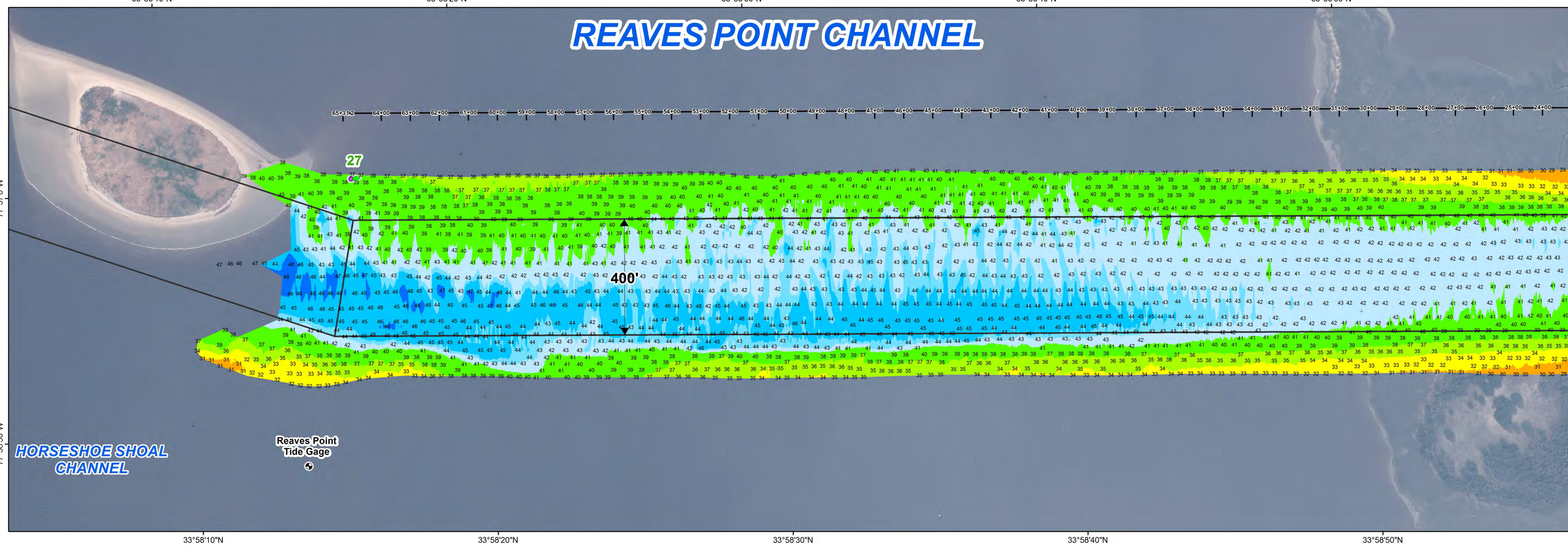
NOTES:

- ELEVATIONS ARE IN FEET AND REFER TO NOAA'S REPORTED MEAN LOWER LOW WATER (MLLW) RELATIVE TO THE 1983-2001 TIDAL EPOCH.
- PROJECT SURVEYED WITH DISTRICT SURVEY VESSEL "SWART" USING RTK GPS HORIZONTAL POSITIONING EQUIPMENT AND 28 KHZ SOUNDING EQUIPMENT.
- HORIZONTAL DATUM NAD 1983. VERTICAL DATUM M.L.L.W..
- TIDE GAGE LOCATED AT REEVES POINT. USE OF TIDE VALUES FOR THIS GAGE ARE RESTRICTED TO QUALITY ASSURANCE PURPOSES FOR VERIFICATION OF RTK TIDES. THE WILMINGTON DISTRICT WILL ONLY USE STAFF GAGE TIDE VALUES FOR FINAL MAPPING AND QUANTITY CALCULATIONS IF RTK GPS IS UNAVAILABLE AT THE TIME OF SURVEY.
- THIS PROJECT WAS DESIGNED BY THE WILMINGTON DISTRICT OF THE U.S. ARMY CORPS OF ENGINEERS. THE INITIALS AND SIGNATURES AND REGISTRATION DESIGNATIONS OF INDIVIDUALS APPEAR ON THESE PROJECT DOCUMENTS WITHIN THE SCOPE OF THEIR EMPLOYMENT AS REQUIRED BY ER 1110-1-8152.
- THE INFORMATION DEPICTED ON THIS SURVEY MAP REPRESENTS THE RESULTS OF SURVEYS MADE ON THE DATES INDICATED AND CAN ONLY BE CONSIDERED AS INDICATING THE GENERAL CONDITIONS EXISTING AT THAT TIME. THESE CONDITIONS ARE SUBJECT TO RAPID CHANGE DUE TO SHOALING EVENTS. A PRUDENT MARINER SHOULD NOT RELY EXCLUSIVELY ON THE INFORMATION PROVIDED HERE. REQUIRED BY 33 CFR 209.325
- NAVIGATION AIDS LOCATED WITH DISTRICT SURVEY VESSEL. ACCURACY +/- 3 METERS.
- FOR THE MOST UP TO DATE INFORMATION PLEASE CHECK OUR WEBSITE AT: WWW.SAW.USACE.ARMY.MIL

Aids to Navigation		Depth In Feet	
Can	Green Light	20 and Shallower	38 - 42
Nun	Red Light	20 - 25	42 - 44
Green Lighted Buoy	Green Daybeacon	25 - 32	44 - 45
Red Lighted Buoy	Red Daybeacon	32 - 35	45 - 47
Junction Marker	Danger Sign	35 - 38	47 and Deeper
	Mileboard		Navigation Channel
	Tide Gage		



REAVES POINT CHANNEL



SURVEYED BY: MAS, WWV	MAP FILE NAME: WH_12_RVP_20160811.MXD
MAPPED BY: K7PDPGSD	

SURVEY DATE: 11 AUGUST 2016	IMAGERY DATE: 17 FEBRUARY 2016
MAP DATE: 12 AUGUST 2016	© 2016 DIGITALGLOBE NEXTVIEW LICENSE
MAP SCALE: 1:2,000	

HYDROGRAPHIC SURVEY
U.S. ARMY ENGINEER DISTRICT
CORPS OF ENGINEERS
WILMINGTON, NORTH CAROLINA
WILMINGTON HARBOR
REAVES POINT CHANNEL
PLEASURE ISLAND, NORTH CAROLINA