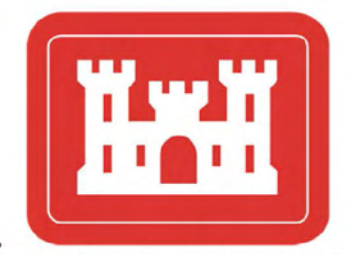
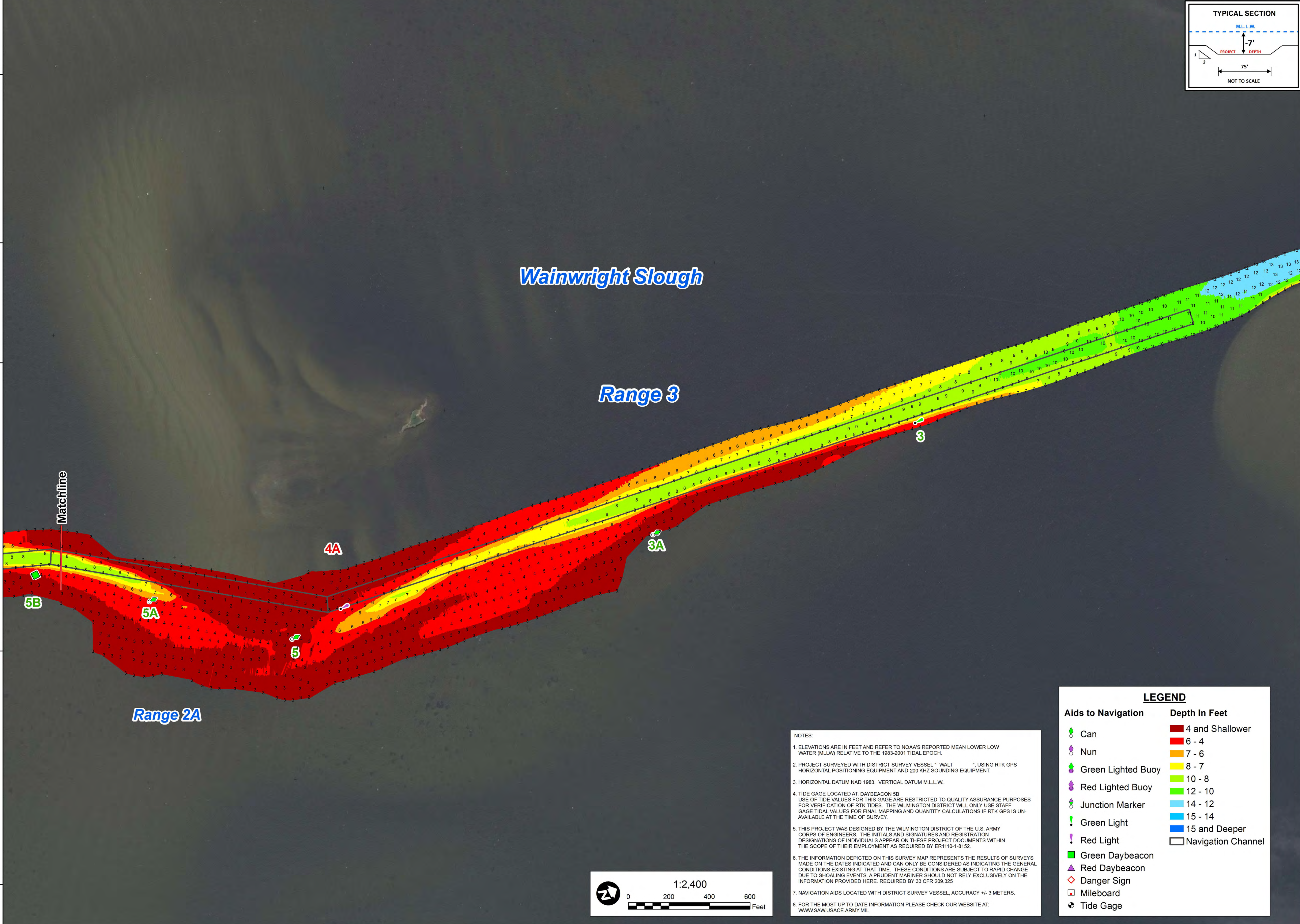
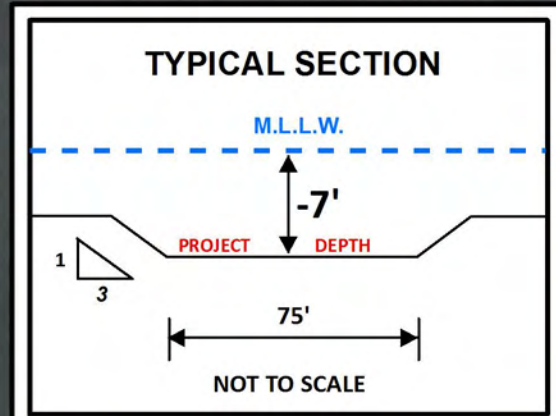
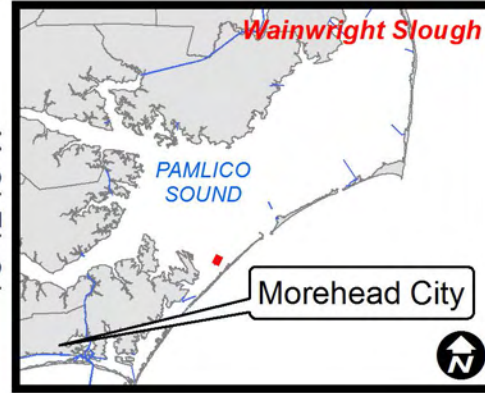
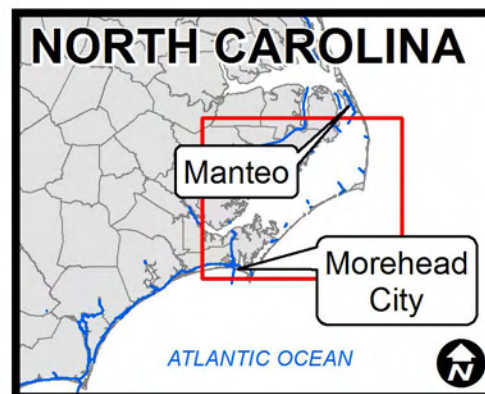


76°13'0"W 34°59'30"N 34°59'45"N 76°12'45"W 76°12'00"W 35°0'0"N 76°12'30"W 35°0'15"N



US Army Corps of Engineers
Wilmington District



Wainwright Slough

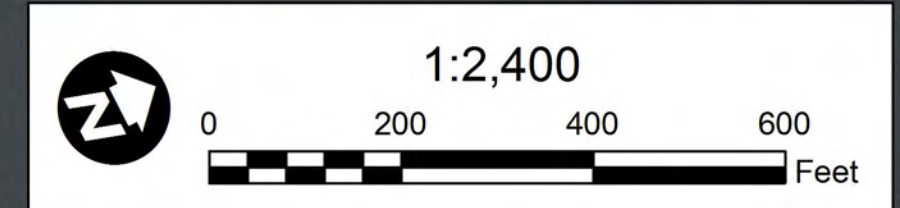
Range 3

Range 2A

Matchline

NOTES:

- ELEVATIONS ARE IN FEET AND REFER TO NOAA'S REPORTED MEAN LOWER LOW WATER (MLLW) RELATIVE TO THE 1983-2001 TIDAL EPOCH.
- PROJECT SURVEYED WITH DISTRICT SURVEY VESSEL "WALT" USING RTK GPS HORIZONTAL POSITIONING EQUIPMENT AND 200 KHZ SOUNDING EQUIPMENT.
- HORIZONTAL DATUM NAD 1983. VERTICAL DATUM M.L.L.W.
- TIDE GAGE LOCATED AT: DAYBEACON 5B. USE OF TIDE VALUES FOR THIS GAGE ARE RESTRICTED TO QUALITY ASSURANCE PURPOSES FOR VERIFICATION OF RTK TIDES. THE WILMINGTON DISTRICT WILL ONLY USE STAFF GAGE TIDAL VALUES FOR FINAL MAPPING AND QUANTITY CALCULATIONS IF RTK GPS IS UNAVAILABLE AT THE TIME OF SURVEY.
- THIS PROJECT WAS DESIGNED BY THE WILMINGTON DISTRICT OF THE U.S. ARMY CORPS OF ENGINEERS. THE INITIALS AND SIGNATURES AND REGISTRATION DESIGNATIONS OF INDIVIDUALS APPEAR ON THESE PROJECT DOCUMENTS WITHIN THE SCOPE OF THEIR EMPLOYMENT AS REQUIRED BY ER1110-1-8152.
- THE INFORMATION DEPICTED ON THIS SURVEY MAP REPRESENTS THE RESULTS OF SURVEYS MADE ON THE DATES INDICATED AND CAN ONLY BE CONSIDERED AS INDICATING THE GENERAL CONDITIONS EXISTING AT THAT TIME. THESE CONDITIONS ARE SUBJECT TO RAPID CHANGE DUE TO SHOALING EVENTS. A PRUDENT MARINER SHOULD NOT RELY EXCLUSIVELY ON THE INFORMATION PROVIDED HERE. REQUIRED BY 33 CFR 209.325
- NAVIGATION AIDS LOCATED WITH DISTRICT SURVEY VESSEL. ACCURACY +/- 3 METERS.
- FOR THE MOST UP TO DATE INFORMATION PLEASE CHECK OUR WEBSITE AT: WWW.SAW.USACE.ARMY.MIL



LEGEND

Aids to Navigation	Depth In Feet
Can	4 and Shallower
Nun	6 - 4
Green Lighted Buoy	7 - 6
Red Lighted Buoy	8 - 7
Junction Marker	10 - 8
Green Light	12 - 10
Red Light	14 - 12
Green Daybeacon	15 - 14
Red Daybeacon	15 and Deeper
Danger Sign	Navigation Channel
Mileboard	
Tide Gage	

SURVEY DATE: 27 JUNE 2016	SURVEYED BY: JBG, CRP
MAP DATE: 13 JULY 2016	MAPPED: K7PDP/SGD
MAP SCALE: 1:2,400	
IMAGERY DATE: 25 JUNE 2016	
© 2016 DIGITALGLOBE NEXTVIEW LICENSE	
	MAP FILE NAME: SH_09_VWWS_20160627.MXD

HYDROGRAPHIC SURVEY
U.S. ARMY ENGINEER DISTRICT
CORPS OF ENGINEERS
WILMINGTON, NORTH CAROLINA

Wainwright Slough
Ranges 2A & 3
CEDAR ISLAND, NORTH CAROLINA

76°12'15"W 34°59'0"N 76°12'00"W 34°59'15"N 76°12'00"W 34°59'30"N 76°11'45"W 35°0'0"N