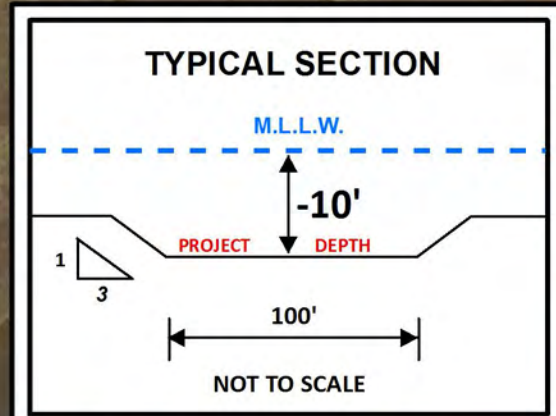


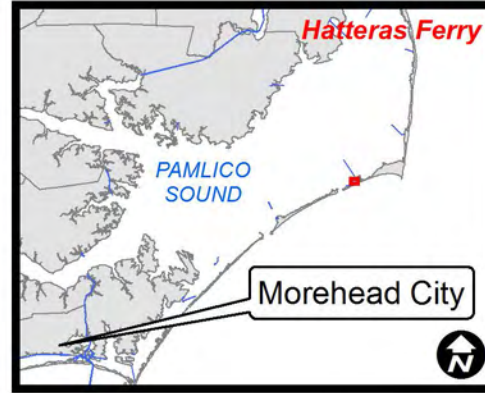
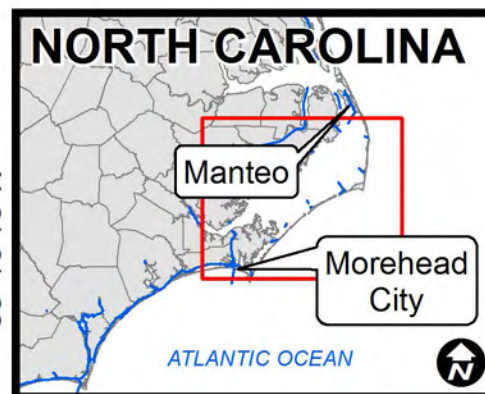
75°42'45"W 75°42'30"W 75°42'15"W 75°42'0"W 75°41'45"W 75°41'30"W

35°13'15"N 35°13'0"N 35°12'45"N

Hatteras Ferry Connecting Channel



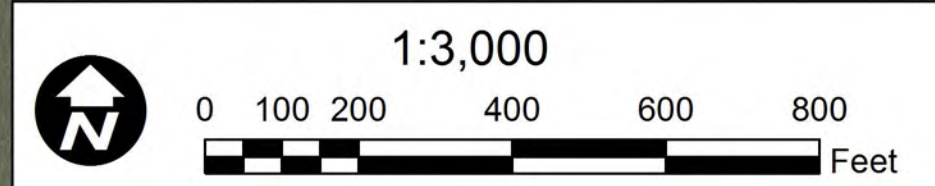
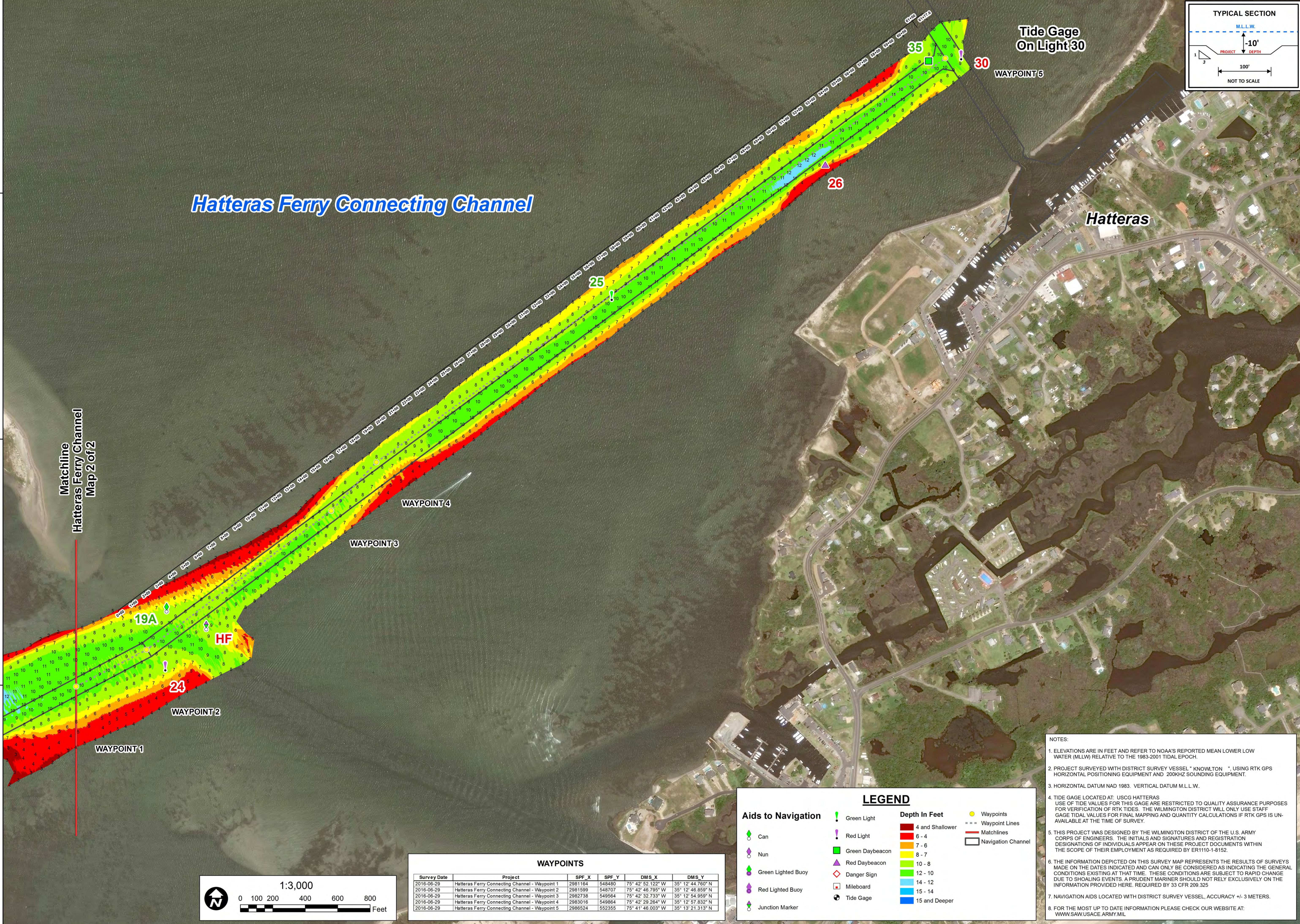
US Army Corps of Engineers
Wilmington District



Matchline
Hatteras Ferry Channel
Map 2 of 2

Tide Gage
On Light 30

Hatteras



WAYPOINTS					
Survey Date	Project	SPF_X	SPF_Y	DMS_X	DMS_Y
2016-06-29	Hatteras Ferry Connecting Channel - Waypoint 1	2981164	548480	75° 42' 52.122" W	35° 12' 44.760" N
2016-06-29	Hatteras Ferry Connecting Channel - Waypoint 2	2981599	548707	75° 42' 46.795" W	35° 12' 46.859" N
2016-06-29	Hatteras Ferry Connecting Channel - Waypoint 3	2982738	548954	75° 42' 32.733" W	35° 12' 54.959" N
2016-06-29	Hatteras Ferry Connecting Channel - Waypoint 4	2983016	548664	75° 42' 29.264" W	35° 12' 57.832" N
2016-06-29	Hatteras Ferry Connecting Channel - Waypoint 5	2988524	552355	75° 41' 46.003" W	35° 13' 21.313" N

LEGEND

Can	Green Light	4 and Shallower	Waypoints
Nun	Red Light	6 - 4	Waypoint Lines
Green Lighted Buoy	Green Daybeacon	7 - 6	Matchlines
Red Lighted Buoy	Red Daybeacon	8 - 7	Navigation Channel
Junction Marker	Danger Sign	10 - 8	
	Milebeacon	12 - 10	
	Tide Gage	14 - 12	
		15 - 14	
		15 and Deeper	

NOTES:

- ELEVATIONS ARE IN FEET AND REFER TO NOAA'S REPORTED MEAN LOWER LOW WATER (MLLW) RELATIVE TO THE 1983-2001 TIDAL EPOCH.
- PROJECT SURVEYED WITH DISTRICT SURVEY VESSEL "KNOWLTON" USING RTK GPS HORIZONTAL POSITIONING EQUIPMENT AND 200KHZ SOUNDING EQUIPMENT.
- HORIZONTAL DATUM NAD 1983. VERTICAL DATUM M.L.L.W.
- TIDE GAGE LOCATED AT: USCG HATTERAS. USE OF TIDE VALUES FOR THIS GAGE ARE RESTRICTED TO QUALITY ASSURANCE PURPOSES FOR VERIFICATION OF RTK TIDES. THE WILMINGTON DISTRICT WILL ONLY USE STAFF GAGE TIDAL VALUES FOR FINAL MAPPING AND QUANTITY CALCULATIONS IF RTK GPS IS UNAVAILABLE AT THE TIME OF SURVEY.
- THIS PROJECT WAS DESIGNED BY THE WILMINGTON DISTRICT OF THE U.S. ARMY CORPS OF ENGINEERS. THE INITIALS AND SIGNATURES AND REGISTRATION DESIGNATIONS OF INDIVIDUALS APPEAR ON THESE PROJECT DOCUMENTS WITHIN THE SCOPE OF THEIR EMPLOYMENT AS REQUIRED BY ER1110-1-8152.
- THE INFORMATION DEPICTED ON THIS SURVEY MAP REPRESENTS THE RESULTS OF SURVEYS MADE ON THE DATES INDICATED AND CAN ONLY BE CONSIDERED AS INDICATING THE GENERAL CONDITIONS EXISTING AT THAT TIME. THESE CONDITIONS ARE SUBJECT TO RAPID CHANGE DUE TO SHOALING EVENTS. A PRUDENT MARINER SHOULD NOT RELY EXCLUSIVELY ON THE INFORMATION PROVIDED HERE. REQUIRED BY 33 CFR 209.325.
- NAVIGATION AIDS LOCATED WITH DISTRICT SURVEY VESSEL, ACCURACY +/- 3 METERS.
- FOR THE MOST UP TO DATE INFORMATION PLEASE CHECK OUR WEBSITE AT: WWW.SAW.USACE.ARMY.MIL

SURVEY DATE: 29 JUNE 2016	SURVEYED BY: DCH, BRJ
MAP DATE: 05 JULY 2016	MAPPED: K70FN5MG
MAP SCALE: 1:3,000	
IMAGERY DATE: 14 JUNE 2016	
© 2016 DIGITALGLOBE NEXTVIEW LICENSE	MAP FILE NAME: RC_02_HCC_20160629.MXD

HYDROGRAPHIC SURVEY
U.S. ARMY ENGINEER DISTRICT
CORPS OF ENGINEERS
WILMINGTON, NORTH CAROLINA

Hatteras Ferry Connecting Channel
HATTERAS, NORTH CAROLINA

75°42'45"W 75°42'30"W 75°42'15"W 75°42'0"W 75°41'45"W 75°41'30"W