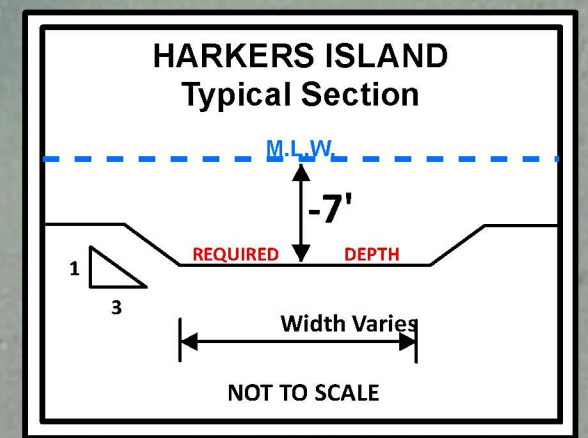


76°35'45"W

76°35'30"W

76°35'15"W

MAP FRAME #1



- NOTES:
- SOUNDINGS ARE EXPRESSED IN FEET AND TENTHS AND REFER TO LOCAL M.L.W.
 - PROJECT SURVEYED WITH DISTRICT SURVEY VESSEL "BEAUFORT" USING RTK GPS HORIZONTAL POSITIONING EQUIPMENT AND 200 KHZ SINGLE BEAM SOUNDING EQUIPMENT.
 - TIDE GAGE LOCATED AT: VRS
 - HORIZONTAL DATUM NAD 1983.
 - DREDGING DATUM: HARKERS ISLAND -1.0 MSL
 - THIS PROJECT WAS DESIGNED BY THE WILMINGTON DISTRICT OF THE U.S. ARMY CORPS OF ENGINEERS. THE INITIALS AND SIGNATURES AND REGISTRATION DESIGNATIONS OF INDIVIDUALS APPEAR ON THESE PROJECT DOCUMENTS WITHIN THE SCOPE OF THEIR EMPLOYMENT AS REQUIRED BY ER1110-1-8152.
 - THESE WAYPOINTS, MAPS AND ASSOCIATED INFORMATION REPRESENTS THE RESULT OF SURVEYS MADE ON THE DATE INDICATED AND CAN ONLY BE CONSIDERED AS INDICATING THE GENERAL CONDITIONS EXISTING AT THAT TIME. THESE CONDITIONS ARE SUBJECT TO RAPID CHANGE DUE TO SHOALING EVENTS. A PRUDENT MARINER SHOULD NOT RELY EXCLUSIVELY ON THE INFORMATION PROVIDED HERE.
 - NAVIGATION AIDS LOCATED WITH DISTRICT SURVEY VESSEL, ACCURACY +/- 3 METERS.
 - FOR THE MOST UP TO DATE INFORMATION PLEASE CHECK OUR WEBSITE AT: WWW.SAW.USACE.ARMY.MIL/NAV

Navigation Aids

Type	Number	Survey Date	SPF_X	SPF_Y	DMS_X	DMS_Y
Green Light	01	2012-05-31	2722447	355259	76° 35' 45.889" W	34° 42' 7.532" N
Can	01A	2012-05-31	2722402	355127	76° 35' 46.466" W	34° 42' 6.242" N
Green Daybeacon	03	2012-05-31	2723298	354230	76° 35' 35.995" W	34° 41' 57.159" N
Can	51	2012-05-31	2725021	359672	76° 35' 13.787" W	34° 42' 50.562" N
Green Light	55	2012-05-31	2724344	358926	76° 35' 22.110" W	34° 42' 43.339" N
Green Light	MM	2012-05-31	2724538	352516	76° 35' 21.655" W	34° 41' 39.903" N

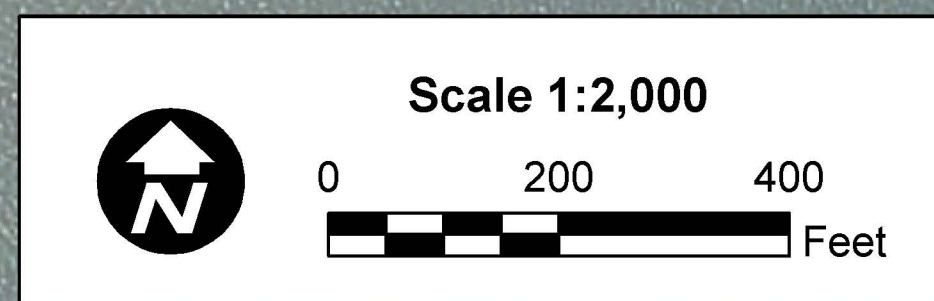
Legend

Navigation Aids

- Can
- Nun
- Green Lighted Buoy
- Red Lighted Buoy
- Junction Marker
- Green Light
- Red Light
- Green Daybeacon
- Red Daybeacon
- Danger Sign
- Mileboard
- Tide Gage

Depth In Feet

- 0 - 4
- 4 - 6
- 6 - 7
- 7 - 8
- 8 - 10
- 10 - 12
- 12 - 14
- 14 - 15
- 15 and deeper



34°42'0"N

34°41'45"N

76°35'45"W

76°35'30"W

MAP FRAME #2

34°43'0"N

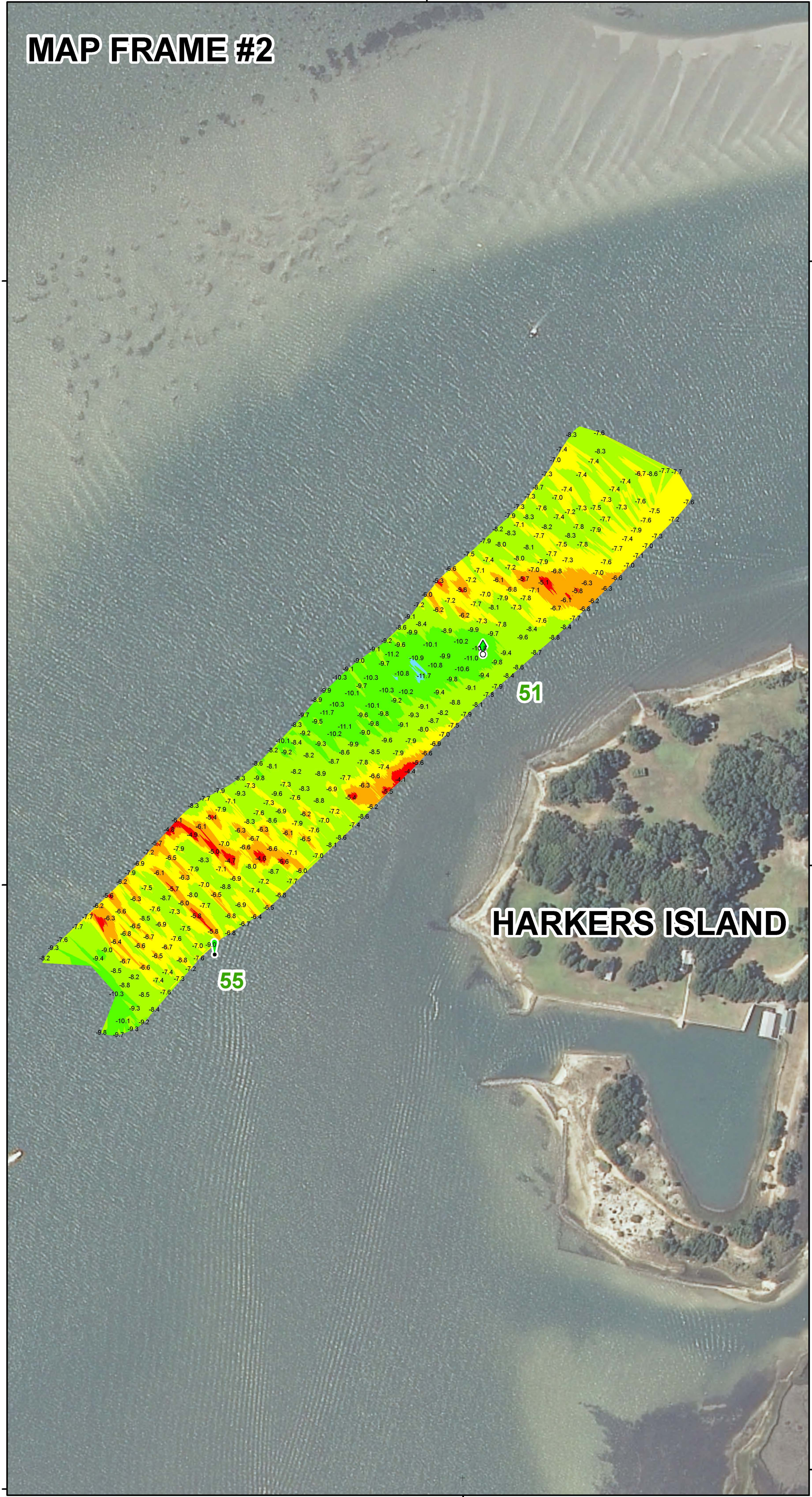
34°42'0"N

34°42'45"N

34°41'45"N

34°42'30"N

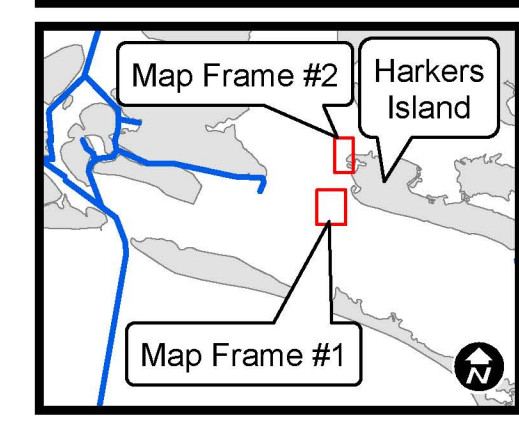
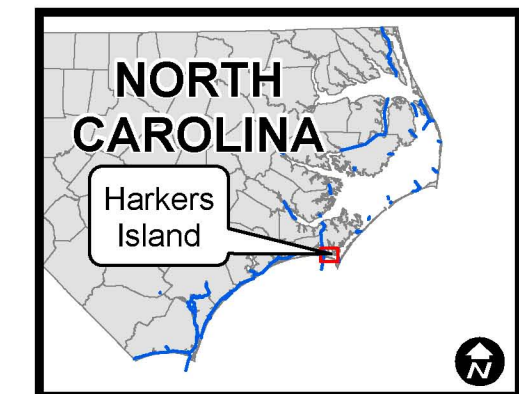
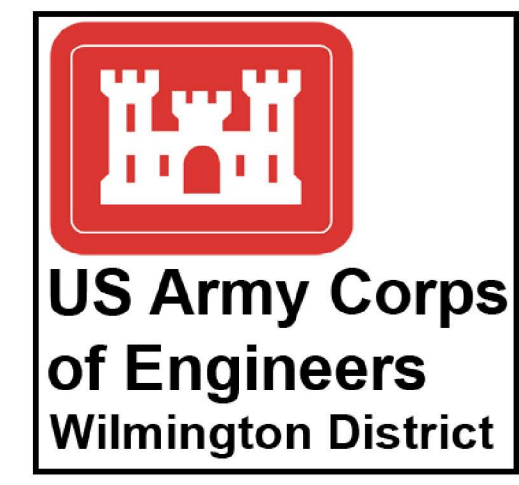
76°35'15"W



34°43'0"N

34°42'45"N

34°42'30"N



Survey Dates: May 31, 2012	Imagery Date: 2010
Map Date: June 22, 2012	Map File # HI 105-12-1
Primary Map Scale: 1 : 2,000	Map File Name: harkers_2012-05-31cs.mxd

CONDITION SURVEY

U.S. ARMY ENGINEER DISTRICT
CORPS OF ENGINEERS
WILMINGTON, NORTH CAROLINA

HARKERS ISLAND

Harkers Island, North Carolina