

- LEGEND**
- Navigation Aids**
- Can
  - Nun
  - Danger Sign
  - Green Daybeacon
  - Red Daybeacon
  - Junction Buoy
  - Green Light
  - Red Light
  - Green Lighted Buoy
  - Red Lighted Buoy
  - Mileboard
  - Tide Gage
- Depth In Feet**
- 0 - 4
  - 4 - 6
  - 6 - 7
  - 7 - 8
  - 8 - 10
  - 10 - 12
  - 12 - 14
  - 14 - 15
  - 15 and deeper
- Navigation Channel**
- Navigation Channel
  - Waypoints
  - Waypoint Line

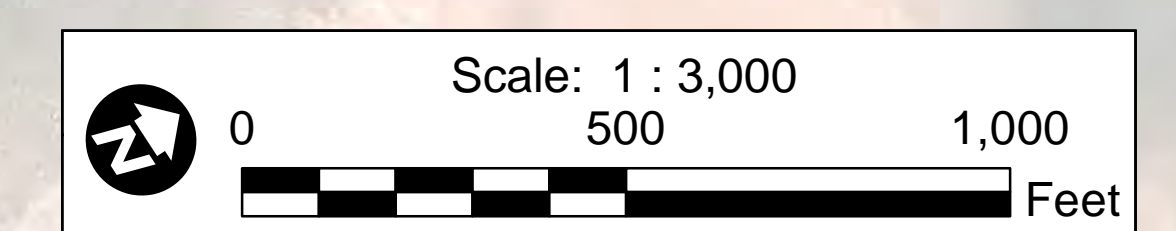
**NOTES:**

- SOUNDINGS ARE EXPRESSED IN FEET AND TENTHS AND REFER TO M.L.W.
- PROJECT SURVEYED WITH DISTRICT SURVEY VESSEL "J. WELLS" & "BEAUFORT", USING RTK GPS HORIZONTAL POSITIONING EQUIPMENT & 200 KHZ SOUNDING EQUIPMENT.
- TIDE GAGE LOCATED AT: BCN #25 & VRS.
- HORIZONTAL DATUM NAD 1983.
- VERTICAL DATUM: BEAUFORT
- THIS PROJECT WAS DESIGNED BY THE WILMINGTON DISTRICT OF THE U.S. ARMY CORPS OF ENGINEERS. THE INITIALS AND SIGNATURES AND REGISTRATION DESIGNATIONS OF INDIVIDUALS APPEAR ON THESE PROJECT DOCUMENTS WITHIN THE SCOPE OF THEIR EMPLOYMENT AS REQUIRED BY ER1110-1-8152.
- THESE WAYPOINTS, MAPS AND ASSOCIATED INFORMATION REPRESENTS THE RESULT OF SURVEYS MADE ON THE DATE INDICATED AND CAN ONLY BE CONSIDERED AS INDICATING THE GENERAL CONDITIONS EXISTING AT THAT TIME. THESE CONDITIONS ARE SUBJECT TO RAPID CHANGE DUE TO SHOALING EVENTS. A PRUDENT MARINER SHOULD NOT RELY EXCLUSIVELY ON THE INFORMATION PROVIDED HERE.
- NAVIGATION AIDS LOCATED WITH DISTRICT SURVEY VESSEL, ACCURACY +/- 3 METERS.
- FOR THE MOST UP TO DATE INFORMATION PLEASE CHECK OUR WEBSITE AT: WWW.SAW.USACE.ARMY.MIL/NAV

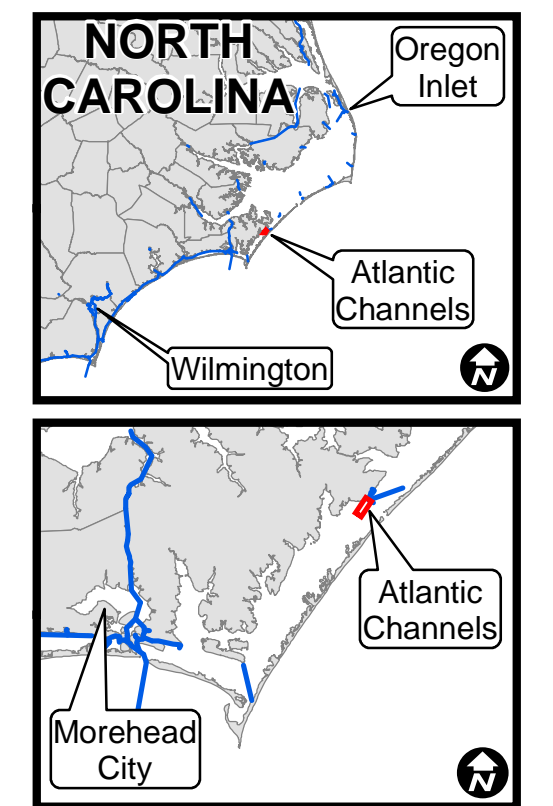
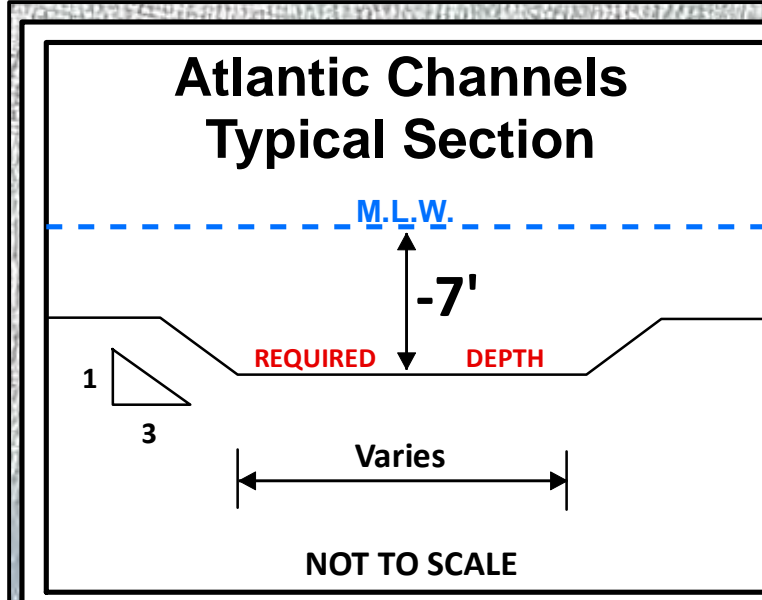
NAVIGATION AIDS							
Type	Number	Color	Survey Date	SPF_X	SPF_Y	DMS_X	DMS_Y
Light	27	Green	2009-03-18	2789946.400071	408650.050142	76° 22' 0.723" W	34° 50' 38.571" N
Light - Tide Gage	25	Green	2009-03-18	2793904.640052	413638.000124	76° 21' 11.652" W	34° 51' 26.853" N
Light	24	Green	2009-03-18	2796069.199796	416065.270444	76° 20' 44.907" W	34° 51' 50.283" N

WAYPOINTS					
Survey Date	Project	SPF_X	SPF_Y	DMS_X	DMS_Y
2009-03-18	Atlantic Channels Ranges 3 to 4 - Waypoint 01	2789620.365196	416541.330221	76° 20' 20.387" W	34° 52' 24.146" N
2009-03-18	Atlantic Channels Ranges 3 to 4 - Waypoint 02	2785606.453074	415298.704587	76° 20' 50.704" W	34° 51' 42.826" N
2009-03-18	Atlantic Channels Ranges 3 to 4 - Waypoint 03	2794025.439987	413650.772186	76° 21' 10.199" W	34° 51' 26.948" N
2009-03-18	Atlantic Channels Ranges 3 to 5 - Waypoint 04	2793308.501999	413199.068425	76° 21' 18.944" W	34° 51' 22.670" N
2009-03-18	Atlantic Channels Ranges 3 to 5 - Waypoint 05	2789769.931116	408738.748678	76° 22' 2.812" W	34° 50' 39.494" N



# ATLANTIC CHANNELS & CORE SOUND



Surveyed By: RWA	Survey Date: March 18, 2009
Mapped By: SGD	Map Date: July 10, 2012
Map File # PSB 105-09-3	Scale: 1 : 3,000
Map File Name: Atlantic_Channel_RS-5_2009-03-18.mxd	Imagery Date: 2010 ©Digital Globe Inc.

**CONDITION SURVEY**  
 U.S. ARMY ENGINEER DISTRICT  
 CORPS OF ENGINEERS  
 WILMINGTON, NORTH CAROLINA

## ATLANTIC CHANNELS RANGES 3-5 & CORE SOUND

Atlantic Intracoastal Waterway Connecting Pamlico Sound & Beaufort Harbor, NC