

**Lockwoods Folly River
Tangents 1-8**

LEGEND

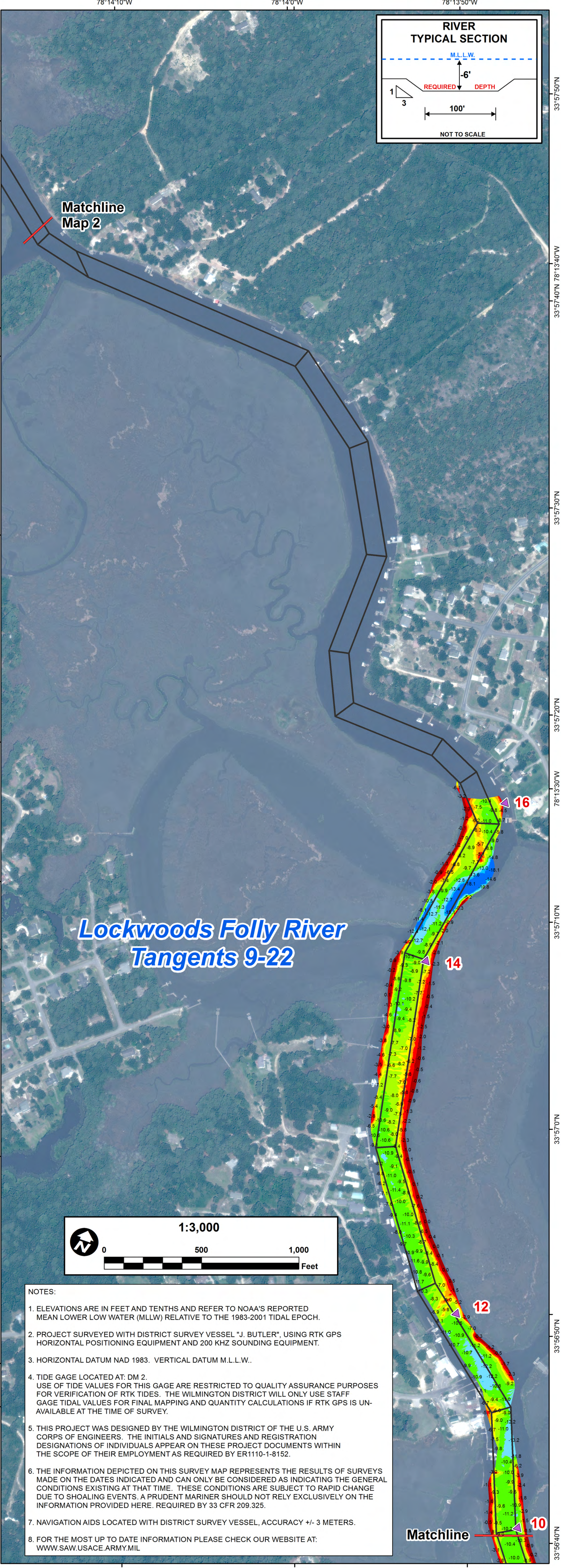
Aids to Navigation

- Can
- Nun
- Green Lighted Buoy
- Red Lighted Buoy
- Junction Marker
- Green Light
- Red Light
- Green Daybeacon
- Red Daybeacon
- Danger Sign
- Mileboard
- Tide Gage

Depth In Feet

- 4 and Shallower
- 6 - 4
- 7 - 6
- 8 - 7
- 10 - 8
- 12 - 10
- 14 - 12
- 15 - 14
- 15 and Deeper

Navigation Channel



**Lockwoods Folly River
Tangents 9-22**

1:3,000

0 500 1,000 Feet

- NOTES:**
- ELEVATIONS ARE IN FEET AND TENTHS AND REFER TO NOAA'S REPORTED MEAN LOWER LOW WATER (MLLW) RELATIVE TO THE 1983-2001 TIDAL EPOCH.
 - PROJECT SURVEYED WITH DISTRICT SURVEY VESSEL "J. BUTLER", USING RTK GPS HORIZONTAL POSITIONING EQUIPMENT AND 200 KHZ SOUNDING EQUIPMENT.
 - HORIZONTAL DATUM NAD 1983. VERTICAL DATUM M.L.L.W..
 - TIDE GAGE LOCATED AT: DM 2. USE OF TIDE VALUES FOR THIS GAGE ARE RESTRICTED TO QUALITY ASSURANCE PURPOSES FOR VERIFICATION OF RTK TIDES. THE WILMINGTON DISTRICT WILL ONLY USE STAFF GAGE TIDAL VALUES FOR FINAL MAPPING AND QUANTITY CALCULATIONS IF RTK GPS IS UNAVAILABLE AT THE TIME OF SURVEY.
 - THIS PROJECT WAS DESIGNED BY THE WILMINGTON DISTRICT OF THE U.S. ARMY CORPS OF ENGINEERS. THE INITIALS AND SIGNATURES AND REGISTRATION DESIGNATIONS OF INDIVIDUALS APPEAR ON THESE PROJECT DOCUMENTS WITHIN THE SCOPE OF THEIR EMPLOYMENT AS REQUIRED BY ER1110-1-8152.
 - THE INFORMATION DEPICTED ON THIS SURVEY MAP REPRESENTS THE RESULTS OF SURVEYS MADE ON THE DATES INDICATED AND CAN ONLY BE CONSIDERED AS INDICATING THE GENERAL CONDITIONS EXISTING AT THAT TIME. THESE CONDITIONS ARE SUBJECT TO RAPID CHANGE DUE TO SHOALING EVENTS. A PRUDENT MARINER SHOULD NOT RELY EXCLUSIVELY ON THE INFORMATION PROVIDED HERE. REQUIRED BY 33 CFR 209.325.
 - NAVIGATION AIDS LOCATED WITH DISTRICT SURVEY VESSEL, ACCURACY +/- 3 METERS.
 - FOR THE MOST UP TO DATE INFORMATION PLEASE CHECK OUR WEBSITE AT: WWW.SAW.USACE.ARMY.MIL

HYDROGRAPHIC SURVEY
U.S. ARMY ENGINEER DISTRICT
CORPS OF ENGINEERS
WILMINGTON, NORTH CAROLINA

LOCKWOODS FOLLY RIVER

BRUNSWICK COUNTY, NORTH CAROLINA

Survey Date: September 14, 2015	Surveyed By: MAS, WJC
Map Date: September 18, 2015	Mapped By: SGD
Map Scale: 1:3,000	
Imagery Date: August 10, 2015	
2015 © Digital Globe Nextview License	Map File Name: LFR_2015-09-14_cs_1_of_4.mxd

Brunswick County

NORTH CAROLINA

Lockwoods Folly River

Morehead City

Brunswick County

Wilmington

