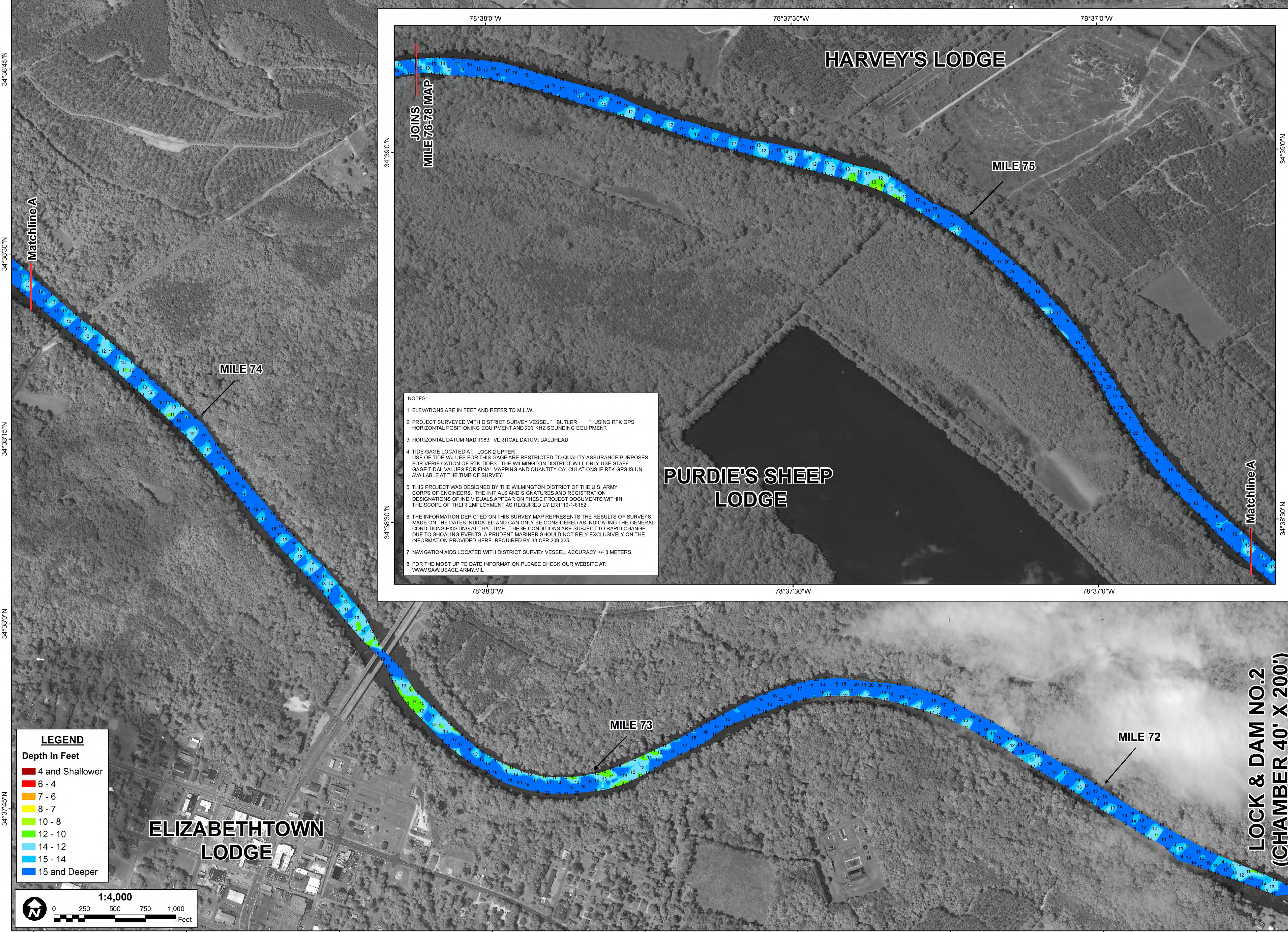


78°36'45"W 78°36'30"W 78°36'15"W 78°36'0"W 78°35'45"W 78°35'30"W 78°35'15"W 78°35'0"W 78°34'45"W



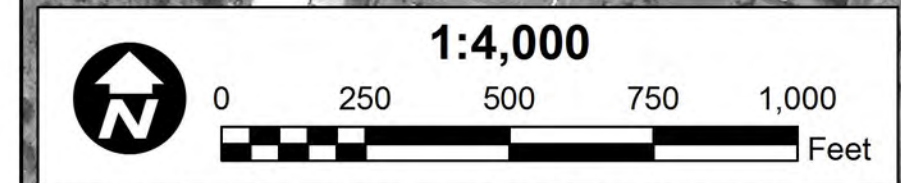
NOTES:

- ELEVATIONS ARE IN FEET AND REFER TO M.L.W.
- PROJECT SURVEYED WITH DISTRICT SURVEY VESSEL " BUTLER ", USING RTK GPS HORIZONTAL POSITIONING EQUIPMENT AND 200 KHZ SOUNDING EQUIPMENT.
- HORIZONTAL DATUM NAD 1983. VERTICAL DATUM: BALDHEAD
- TIDE GAGE LOCATED AT: LOCK 2 UPPER
USE OF TIDE VALUES FOR THIS GAGE ARE RESTRICTED TO QUALITY ASSURANCE PURPOSES FOR VERIFICATION OF RTK TIDES. THE WILMINGTON DISTRICT WILL ONLY USE STAFF GAGE TIDAL VALUES FOR FINAL MAPPING AND QUANTITY CALCULATIONS IF RTK GPS IS UNAVAILABLE AT THE TIME OF SURVEY.
- THIS PROJECT WAS DESIGNED BY THE WILMINGTON DISTRICT OF THE U.S. ARMY CORPS OF ENGINEERS. THE INITIALS AND SIGNATURES AND REGISTRATION DESIGNATIONS OF INDIVIDUALS APPEAR ON THESE PROJECT DOCUMENTS WITHIN THE SCOPE OF THEIR EMPLOYMENT AS REQUIRED BY ER1110-1-8152.
- THE INFORMATION DEPICTED ON THIS SURVEY MAP REPRESENTS THE RESULTS OF SURVEYS MADE ON THE DATES INDICATED AND CAN ONLY BE CONSIDERED AS INDICATING THE GENERAL CONDITIONS EXISTING AT THAT TIME. THESE CONDITIONS ARE SUBJECT TO RAPID CHANGE DUE TO SHOALING EVENTS. A PRUDENT MARINER SHOULD NOT RELY EXCLUSIVELY ON THE INFORMATION PROVIDED HERE. REQUIRED BY 33 CFR 209.325
- NAVIGATION AIDS LOCATED WITH DISTRICT SURVEY VESSEL. ACCURACY +/- 3 METERS.
- FOR THE MOST UP TO DATE INFORMATION PLEASE CHECK OUR WEBSITE AT: WWW.SAW.USACE.ARMY.MIL

LEGEND

Depth In Feet

Red	4 and Shallower
Orange	6 - 4
Yellow	7 - 6
Light Green	8 - 7
Green	10 - 8
Light Blue	12 - 10
Blue	14 - 12
Dark Blue	15 - 14
Very Dark Blue	15 and Deeper



US Army Corps of Engineers
Wilmington District



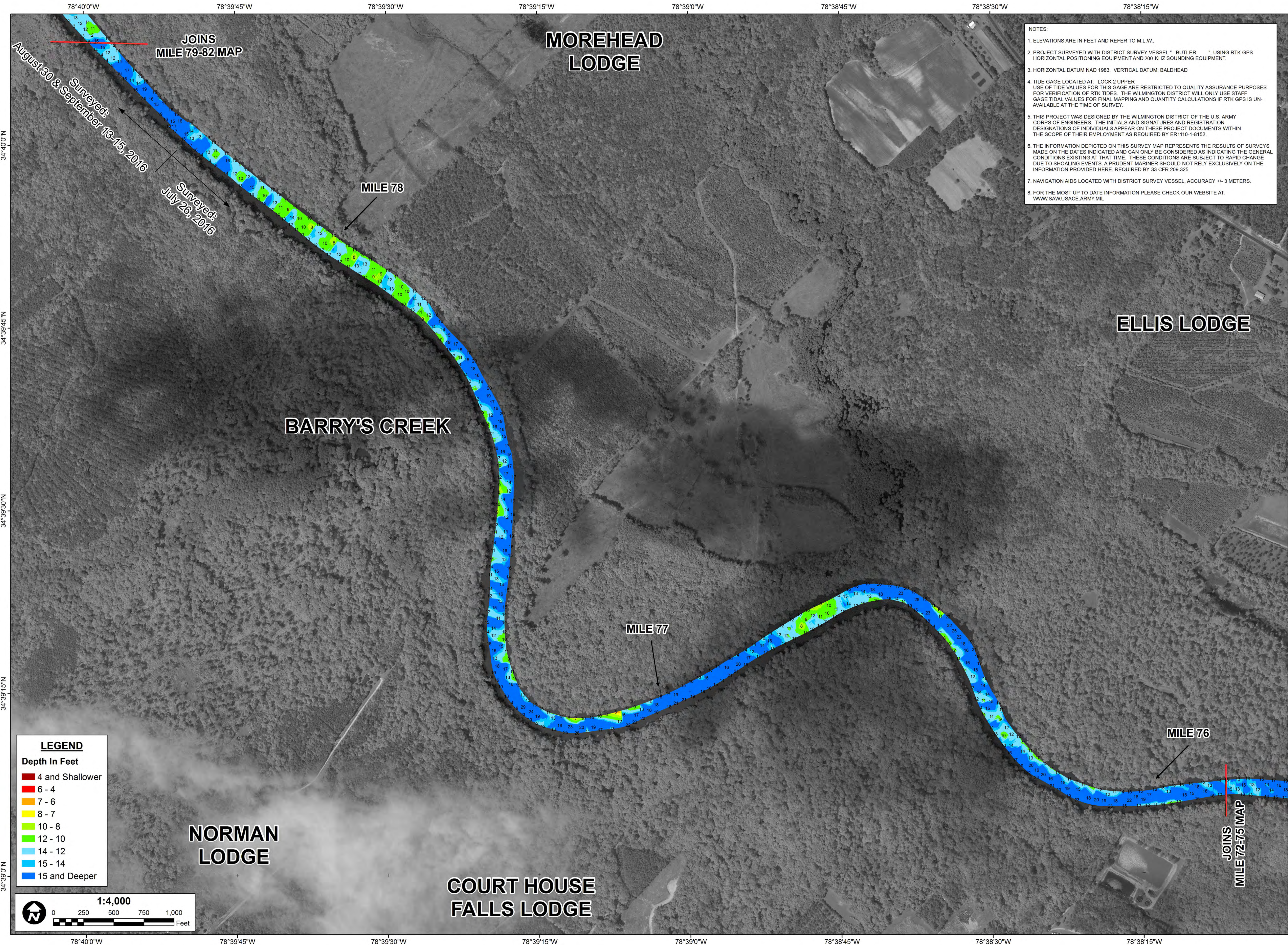
SURVEY DATE: 26 JULY 2016	SURVEYED BY: LMT, SRV
MAP DATE: 03 OCTOBER 2016	MAPPED: K7OPNDJM
MAP SCALE: 1:4,000	
IMAGERY DATE: 8 & 16 MAY 2016	
© 2016 DIGITALGLOBE NEXTVIEW LICENSE	MAP FILE NAME: CFA_MILE72-75_2016-07-26.MXD

HYDROGRAPHIC SURVEY
U.S. ARMY ENGINEER DISTRICT
CORPS OF ENGINEERS
WILMINGTON, NORTH CAROLINA

**Cape Fear Above
Mile 72 to 75**
CAPE FEAR RIVER, NORTH CAROLINA

34°37'45"N
34°38'0"N
34°38'15"N
34°38'30"N
34°38'45"N

78°36'45"W 78°36'30"W 78°36'15"W 78°36'0"W 78°35'45"W 78°35'30"W 78°35'15"W 78°35'0"W 78°34'45"W



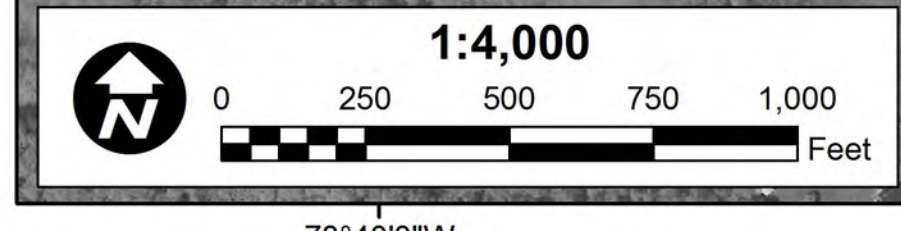
NOTES:

- ELEVATIONS ARE IN FEET AND REFER TO M.L.W.
- PROJECT SURVEYED WITH DISTRICT SURVEY VESSEL " BUTLER " USING RTK GPS HORIZONTAL POSITIONING EQUIPMENT AND 200 KHZ SOUNDING EQUIPMENT.
- HORIZONTAL DATUM NAD 1983. VERTICAL DATUM: BALDHEAD
- TIDE GAGE LOCATED AT: LOCK 2 UPPER. USE OF TIDE VALUES FOR THIS GAGE ARE RESTRICTED TO QUALITY ASSURANCE PURPOSES FOR VERIFICATION OF RTK TIDES. THE WILMINGTON DISTRICT WILL ONLY USE STAFF GAGE TIDAL VALUES FOR FINAL MAPPING AND QUANTITY CALCULATIONS IF RTK GPS IS UNAVAILABLE AT THE TIME OF SURVEY.
- THIS PROJECT WAS DESIGNED BY THE WILMINGTON DISTRICT OF THE U.S. ARMY CORPS OF ENGINEERS. THE INITIALS AND SIGNATURES AND REGISTRATION DESIGNATIONS OF INDIVIDUALS APPEAR ON THESE PROJECT DOCUMENTS WITHIN THE SCOPE OF THEIR EMPLOYMENT AS REQUIRED BY ER1110-1-8152.
- THE INFORMATION DEPICTED ON THIS SURVEY MAP REPRESENTS THE RESULTS OF SURVEYS MADE ON THE DATES INDICATED AND CAN ONLY BE CONSIDERED AS INDICATING THE GENERAL CONDITIONS EXISTING AT THAT TIME. THESE CONDITIONS ARE SUBJECT TO RAPID CHANGE DUE TO SHOALING EVENTS. A PRUDENT MARINER SHOULD NOT RELY EXCLUSIVELY ON THE INFORMATION PROVIDED HERE. REQUIRED BY 33 CFR 209.325.
- NAVIGATION AIDS LOCATED WITH DISTRICT SURVEY VESSEL, ACCURACY +/- 3 METERS.
- FOR THE MOST UP TO DATE INFORMATION PLEASE CHECK OUR WEBSITE AT: WWW.SAW.USACE.ARMY.MIL

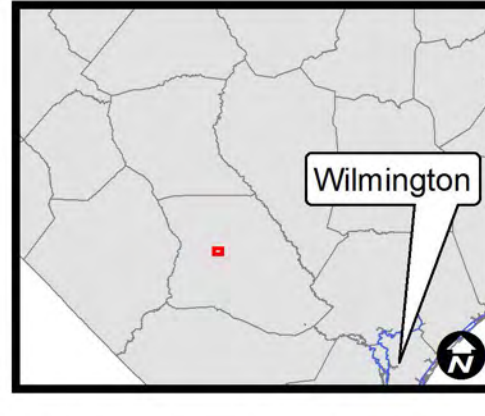
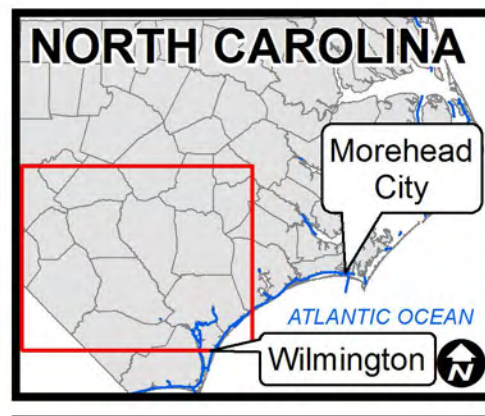
LEGEND

Depth In Feet

Red	4 and Shallower
Orange	6 - 4
Yellow	7 - 6
Light Green	8 - 7
Green	10 - 8
Light Blue	12 - 10
Blue	14 - 12
Dark Blue	15 - 14
Very Dark Blue	15 and Deeper



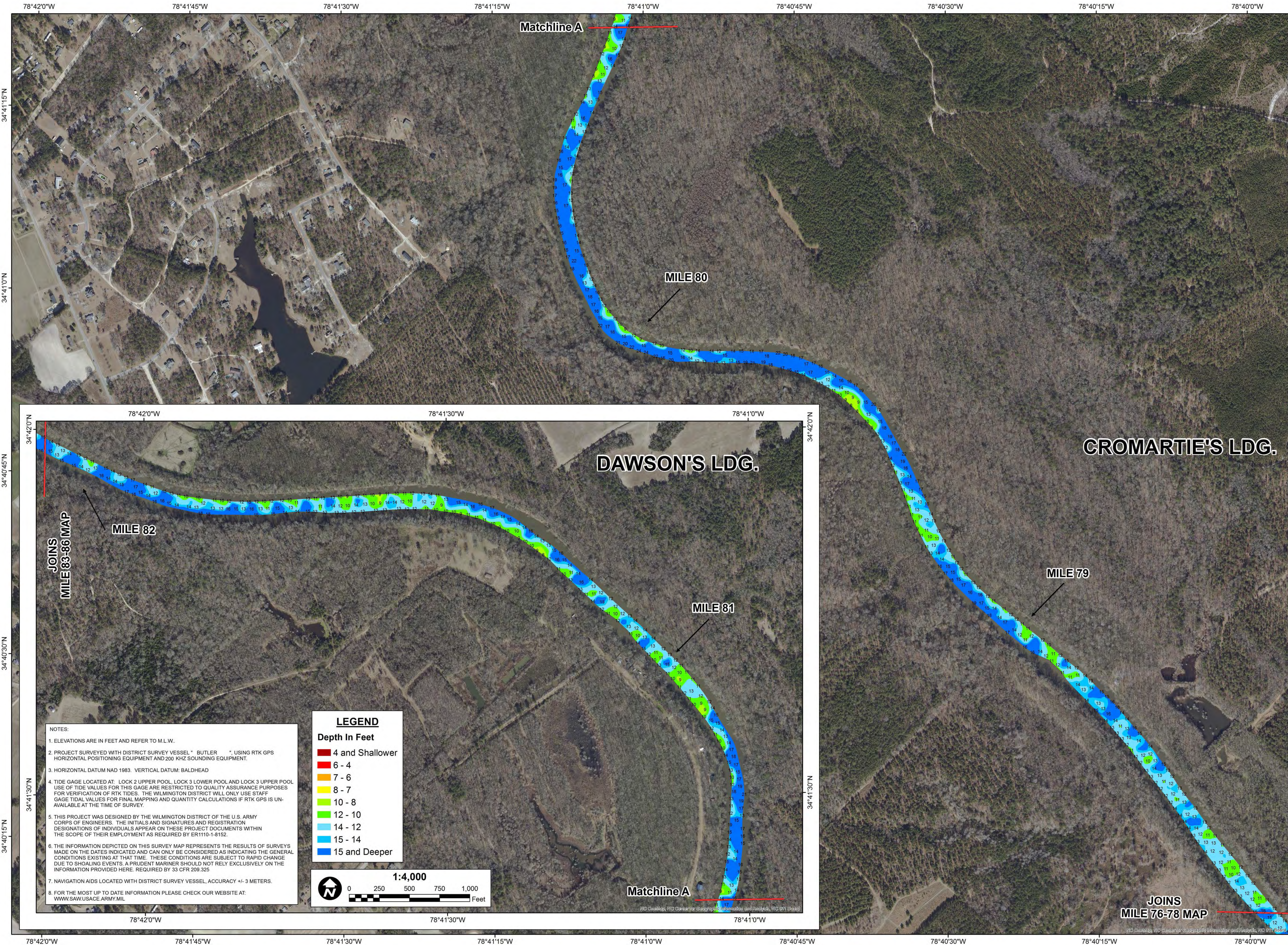
**US Army Corps of Engineers
Wilmington District**



SURVEY DATE: 26 JULY, 30 AUGUST, 13-15 SEPTEMBER 2016	SURVEYED BY: LMT, SRV
MAP DATE: 04 OCTOBER 2016	MAPPED: K7OPNDJM
MAP SCALE: 1:4,000	
IMAGERY DATE: 9 JUNE 2016	
© 2016 DIGITALGLOBE NEXTVIEW LICENSE	MAP FILE NAME: CFA_MILE76-78_2016-07-26.MXD

HYDROGRAPHIC SURVEY
U.S. ARMY ENGINEER DISTRICT
CORPS OF ENGINEERS
WILMINGTON, NORTH CAROLINA

**Cape Fear Above
Mile 76 to 78**
CAPE FEAR RIVER, NORTH CAROLINA



NOTES:

- ELEVATIONS ARE IN FEET AND REFER TO M.L.W.
- PROJECT SURVEYED WITH DISTRICT SURVEY VESSEL " BUTLER " USING RTK GPS HORIZONTAL POSITIONING EQUIPMENT AND 200 KHZ SOUNDING EQUIPMENT.
- HORIZONTAL DATUM NAD 1983. VERTICAL DATUM: BALDHEAD
- TIDE GAGE LOCATED AT: LOCK 2 UPPER POOL, LOCK 3 LOWER POOL AND LOCK 3 UPPER POOL. USE OF TIDE VALUES FOR THIS GAGE ARE RESTRICTED TO QUALITY ASSURANCE PURPOSES FOR VERIFICATION OF RTK TIDES. THE WILMINGTON DISTRICT WILL ONLY USE STAFF GAGE TIDAL VALUES FOR FINAL MAPPING AND QUANTITY CALCULATIONS IF RTK GPS IS UNAVAILABLE AT THE TIME OF SURVEY.
- THIS PROJECT WAS DESIGNED BY THE WILMINGTON DISTRICT OF THE U.S. ARMY CORPS OF ENGINEERS. THE INITIALS AND SIGNATURES AND REGISTRATION DESIGNATIONS OF INDIVIDUALS APPEAR ON THESE PROJECT DOCUMENTS WITHIN THE SCOPE OF THEIR EMPLOYMENT AS REQUIRED BY ER1110-1-8152.
- THE INFORMATION DEPICTED ON THIS SURVEY MAP REPRESENTS THE RESULTS OF SURVEYS MADE ON THE DATES INDICATED AND CAN ONLY BE CONSIDERED AS INDICATING THE GENERAL CONDITIONS EXISTING AT THAT TIME. THESE CONDITIONS ARE SUBJECT TO RAPID CHANGE DUE TO SHOALING EVENTS. A PRUDENT MARINER SHOULD NOT RELY EXCLUSIVELY ON THE INFORMATION PROVIDED HERE. REQUIRED BY 33 CFR 209.325
- NAVIGATION AIDS LOCATED WITH DISTRICT SURVEY VESSEL, ACCURACY +/- 3 METERS.
- FOR THE MOST UP TO DATE INFORMATION PLEASE CHECK OUR WEBSITE AT: WWW.SAW.USACE.ARMY.MIL

LEGEND

Depth In Feet

- 4 and Shallower
- 6 - 4
- 7 - 6
- 8 - 7
- 10 - 8
- 12 - 10
- 14 - 12
- 15 - 14
- 15 and Deeper

1:4,000

0 250 500 750 1,000 Feet



**US Army Corps of Engineers
Wilmington District**



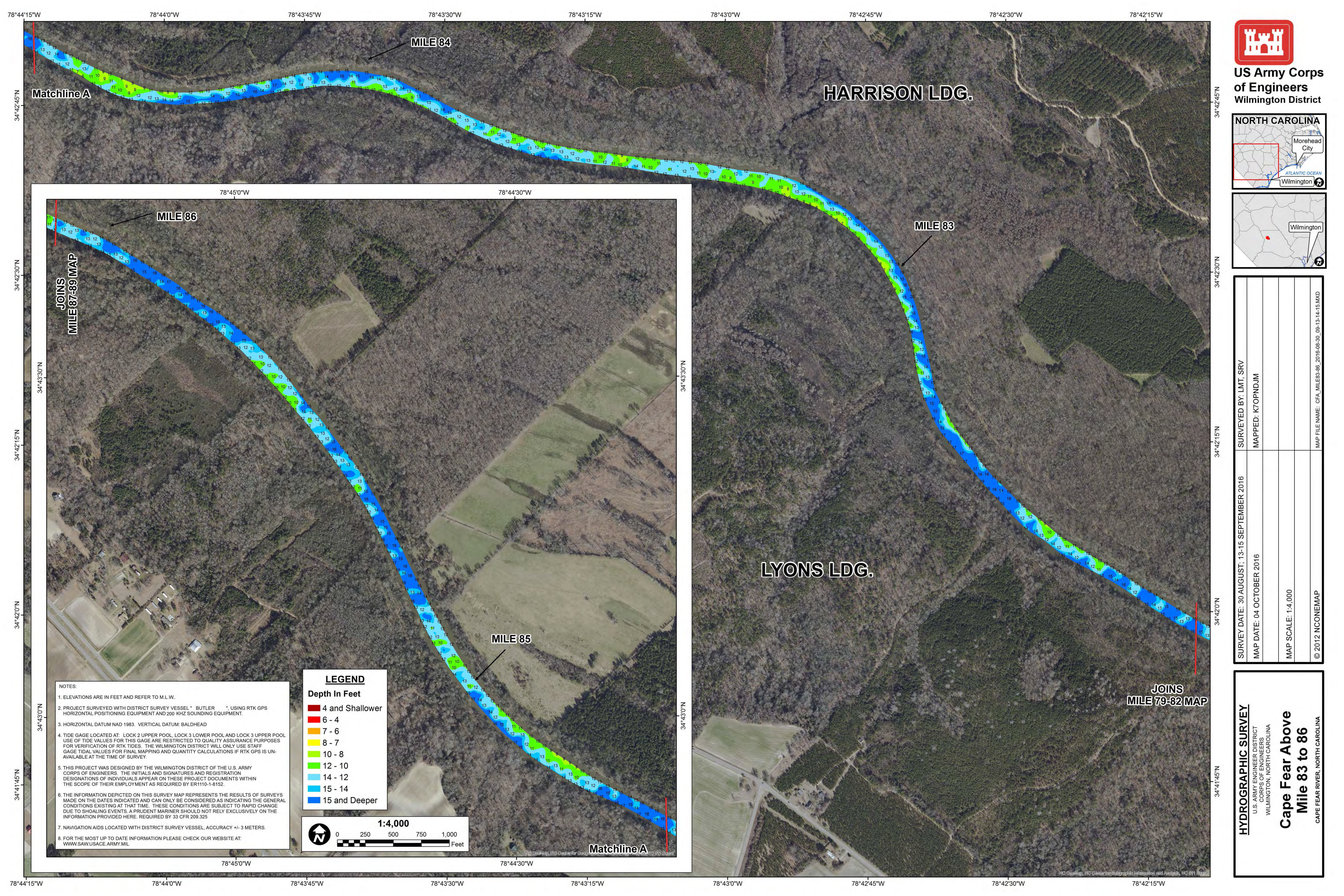
SURVEY DATE: 30 AUGUST; 13-15 SEPTEMBER 2016	SURVEYED BY: LMT, SRV
MAP DATE: 04 OCTOBER 2016	MAPPED: K7OPNDJM
MAP SCALE: 1:4,000	
© 2012 NCONEMAP	MAP FILE NAME: CFA_MILE79-82_2016-08-30_09-13-14-15.MXD

HYDROGRAPHIC SURVEY

U.S. ARMY ENGINEER DISTRICT
CORPS OF ENGINEERS
WILMINGTON, NORTH CAROLINA

**Cape Fear Above
Mile 79 to 82**

CAPE FEAR RIVER, NORTH CAROLINA



**US Army Corps
of Engineers
Wilmington District**



SURVEY DATE: 30 AUGUST; 13-15 SEPTEMBER 2016	SURVEYED BY: LMT, SRV
MAP DATE: 04 OCTOBER 2016	MAPPED: K7OPNDJM
MAP SCALE: 1:4,000	
© 2012 NCONEMAP	MAP FILE NAME: CFA_MILE83-86_2016-08-30_09-13-14-15.MXD

HYDROGRAPHIC SURVEY
 U.S. ARMY ENGINEER DISTRICT
 CORPS OF ENGINEERS
 WILMINGTON, NORTH CAROLINA

**Cape Fear Above
 Mile 83 to 86**
 CAPE FEAR RIVER, NORTH CAROLINA

- NOTES:**
- ELEVATIONS ARE IN FEET AND REFER TO M.L.W.
 - PROJECT SURVEYED WITH DISTRICT SURVEY VESSEL " BUTLER " USING RTK GPS HORIZONTAL POSITIONING EQUIPMENT AND 200 KHZ SOUNDING EQUIPMENT.
 - HORIZONTAL DATUM NAD 1983. VERTICAL DATUM: BALDHEAD
 - TIDE GAGE LOCATED AT: LOCK 2 UPPER POOL, LOCK 3 LOWER POOL AND LOCK 3 UPPER POOL. USE OF TIDE VALUES FOR THIS GAGE ARE RESTRICTED TO QUALITY ASSURANCE PURPOSES FOR VERIFICATION OF RTK TIDES. THE WILMINGTON DISTRICT WILL ONLY USE STAFF GAGE TIDAL VALUES FOR FINAL MAPPING AND QUANTITY CALCULATIONS IF RTK GPS IS UNAVAILABLE AT THE TIME OF SURVEY.
 - THIS PROJECT WAS DESIGNED BY THE WILMINGTON DISTRICT OF THE U.S. ARMY CORPS OF ENGINEERS. THE INITIALS AND SIGNATURES AND REGISTRATION DESIGNATIONS OF INDIVIDUALS APPEAR ON THESE PROJECT DOCUMENTS WITHIN THE SCOPE OF THEIR EMPLOYMENT AS REQUIRED BY ER1110-1-8152.
 - THE INFORMATION DEPICTED ON THIS SURVEY MAP REPRESENTS THE RESULTS OF SURVEYS MADE ON THE DATES INDICATED AND CAN ONLY BE CONSIDERED AS INDICATING THE GENERAL CONDITIONS EXISTING AT THAT TIME. THESE CONDITIONS ARE SUBJECT TO RAPID CHANGE DUE TO SHOALING EVENTS. A PRUDENT MARINER SHOULD NOT RELY EXCLUSIVELY ON THE INFORMATION PROVIDED HERE, REQUIRED BY 33 CFR 209.325
 - NAVIGATION AIDS LOCATED WITH DISTRICT SURVEY VESSEL, ACCURACY +/- 3 METERS.
 - FOR THE MOST UP TO DATE INFORMATION PLEASE CHECK OUR WEBSITE AT: WWW.SAW.USACE.ARMY.MIL

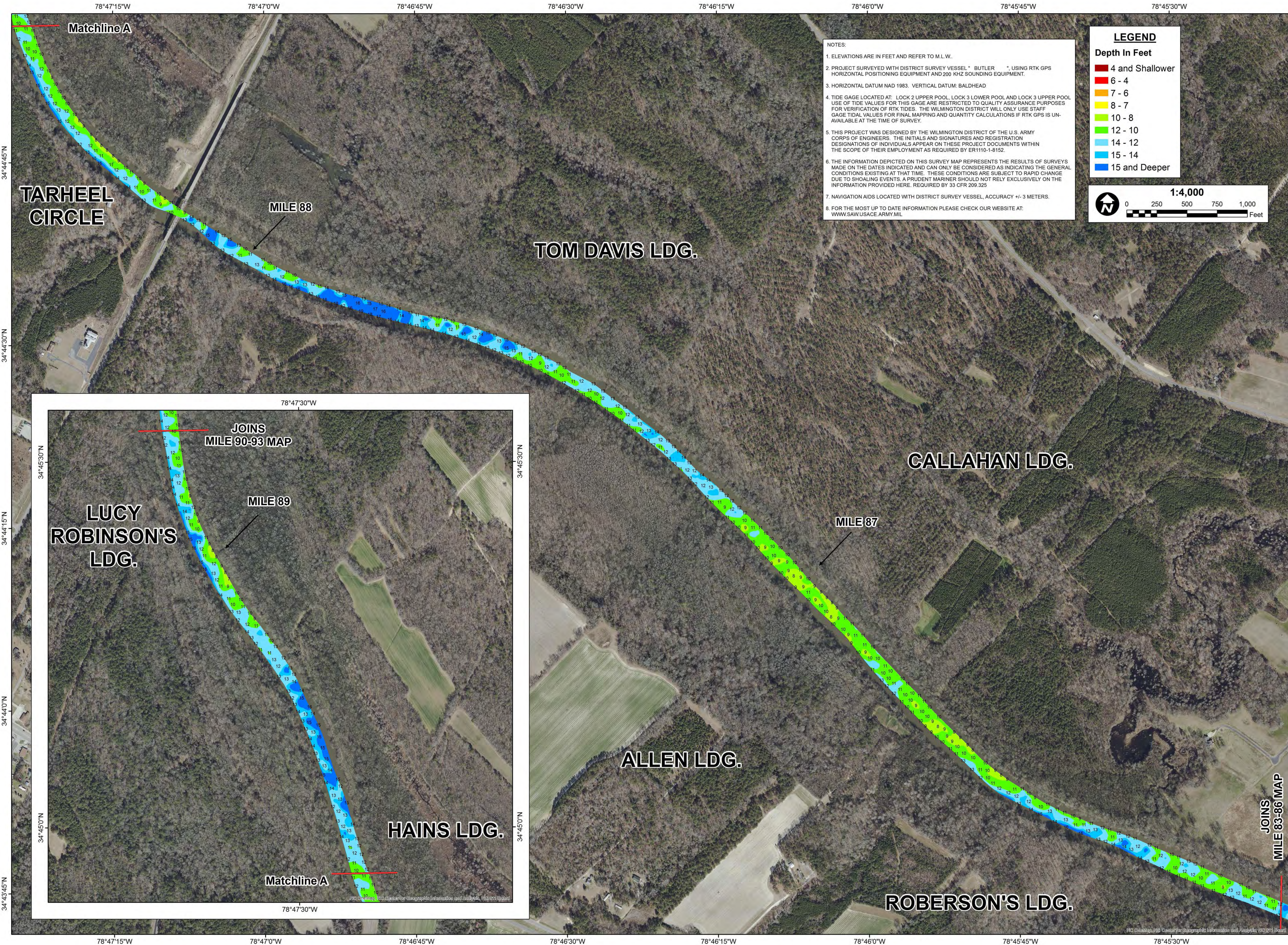
LEGEND

Depth In Feet

- 4 and Shallower
- 6 - 4
- 7 - 6
- 8 - 7
- 10 - 8
- 12 - 10
- 14 - 12
- 15 - 14
- 15 and Deeper

1:4,000

0 250 500 750 1,000 Feet



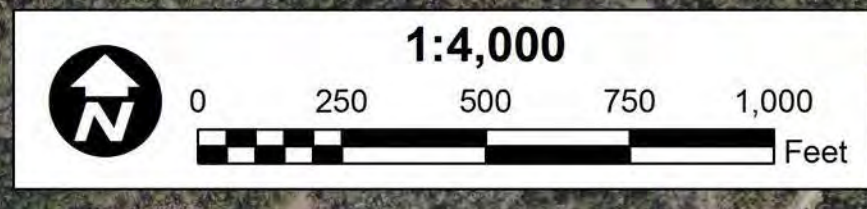
NOTES:

- ELEVATIONS ARE IN FEET AND REFER TO M.L.W.
- PROJECT SURVEYED WITH DISTRICT SURVEY VESSEL " BUTLER " USING RTK GPS HORIZONTAL POSITIONING EQUIPMENT AND 200 KHZ SOUNDING EQUIPMENT.
- HORIZONTAL DATUM NAD 1983. VERTICAL DATUM: BALDHEAD
- TIDE GAGE LOCATED AT: LOCK 2 UPPER POOL, LOCK 3 LOWER POOL AND LOCK 3 UPPER POOL. USE OF TIDE VALUES FOR THIS GAGE ARE RESTRICTED TO QUALITY ASSURANCE PURPOSES FOR VERIFICATION OF RTK TIDES. THE WILMINGTON DISTRICT WILL ONLY USE STAFF GAGE TIDAL VALUES FOR FINAL MAPPING AND QUANTITY CALCULATIONS IF RTK GPS IS UNAVAILABLE AT THE TIME OF SURVEY.
- THIS PROJECT WAS DESIGNED BY THE WILMINGTON DISTRICT OF THE U.S. ARMY CORPS OF ENGINEERS. THE INITIALS AND SIGNATURES AND REGISTRATION DESIGNATIONS OF INDIVIDUALS APPEAR ON THESE PROJECT DOCUMENTS WITHIN THE SCOPE OF THEIR EMPLOYMENT AS REQUIRED BY ER1110-1-8152.
- THE INFORMATION DEPICTED ON THIS SURVEY MAP REPRESENTS THE RESULTS OF SURVEYS MADE ON THE DATES INDICATED AND CAN ONLY BE CONSIDERED AS INDICATING THE GENERAL CONDITIONS EXISTING AT THAT TIME. THESE CONDITIONS ARE SUBJECT TO RAPID CHANGE DUE TO SHOALING EVENTS. A PRUDENT MARINER SHOULD NOT RELY EXCLUSIVELY ON THE INFORMATION PROVIDED HERE. REQUIRED BY 33 CFR 209.325
- NAVIGATION AIDS LOCATED WITH DISTRICT SURVEY VESSEL, ACCURACY +/- 3 METERS.
- FOR THE MOST UP TO DATE INFORMATION PLEASE CHECK OUR WEBSITE AT: WWW.SAW.USACE.ARMY.MIL

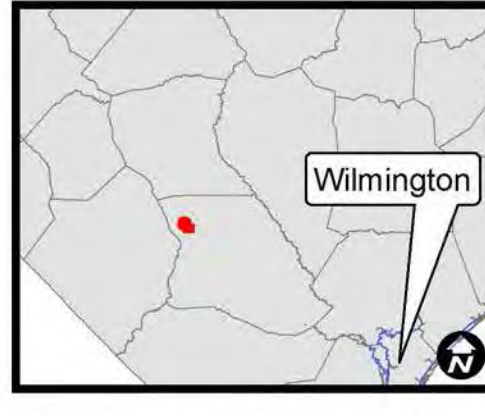
LEGEND

Depth In Feet

4 and Shallower
6 - 4
7 - 6
8 - 7
10 - 8
12 - 10
14 - 12
15 - 14
15 and Deeper



US Army Corps of Engineers
Wilmington District

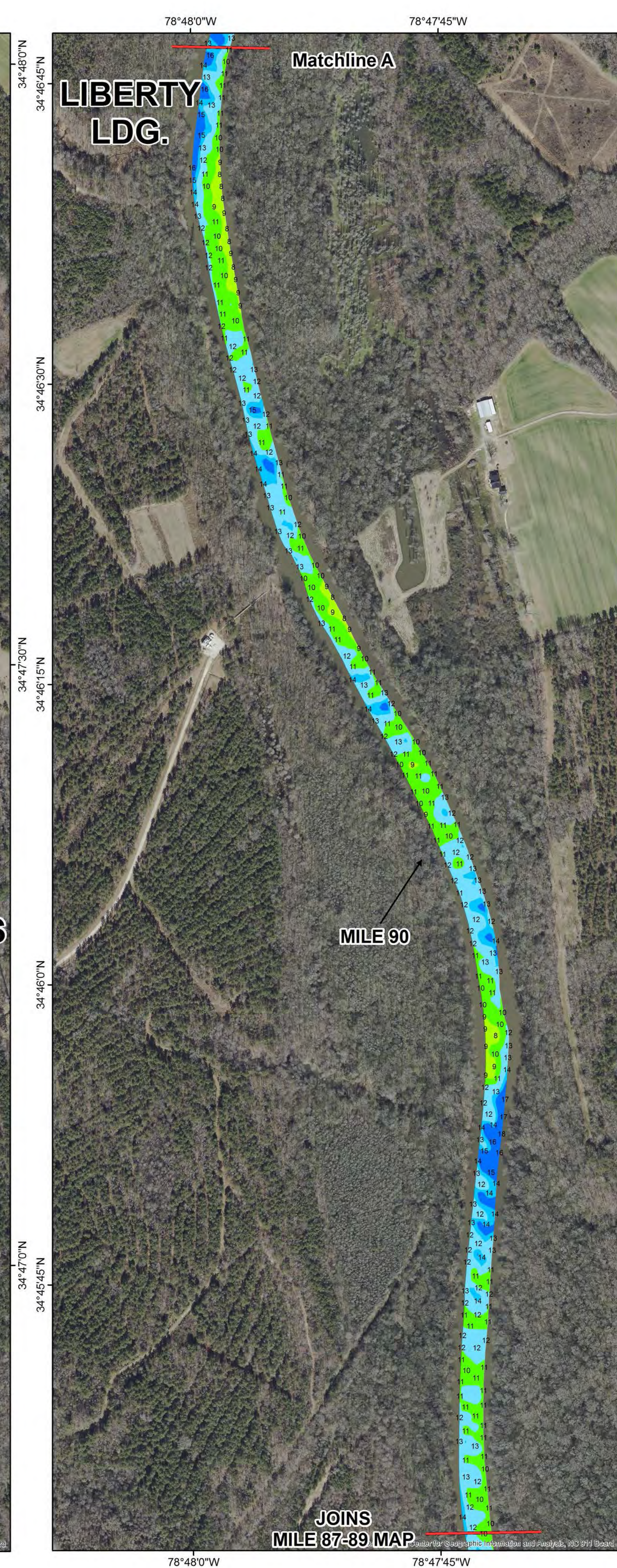
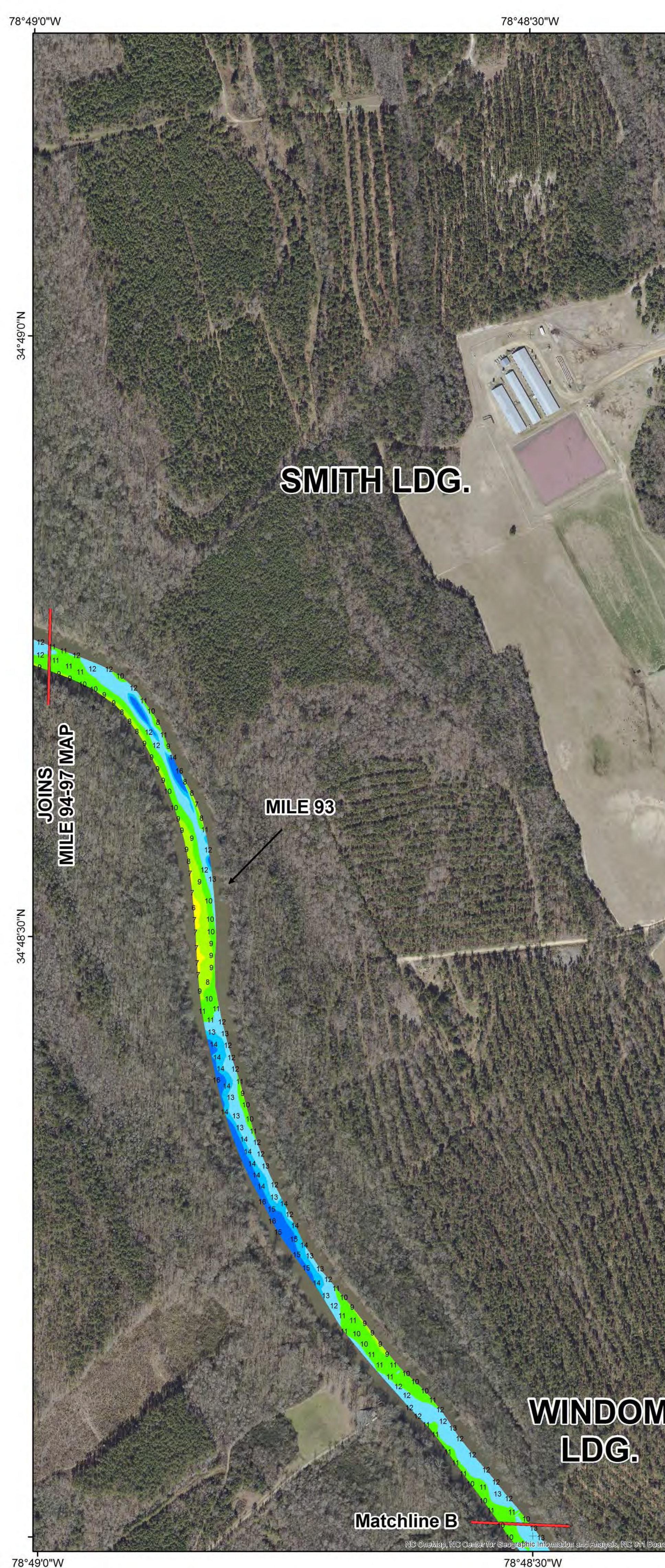


SURVEY DATE: 30 AUGUST; 13-15 SEPTEMBER 2016	SURVEYED BY: LMT, SRV
MAP DATE: 04 OCTOBER 2016	MAPPED: K7OPNDJM
MAP SCALE: 1:4,000	
© 2012 NCONEMAP	MAP FILE NAME: CFA_MILE87-89_2016-08-30_09-13-14-15.MXD

HYDROGRAPHIC SURVEY
U.S. ARMY ENGINEER DISTRICT
CORPS OF ENGINEERS
WILMINGTON, NORTH CAROLINA

**Cape Fear Above
Mile 87 to 89**

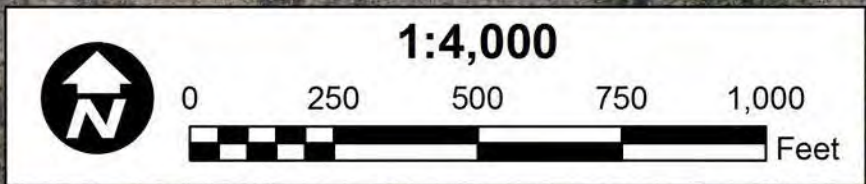
CAPE FEAR RIVER, NORTH CAROLINA



LEGEND

Depth In Feet

4 and Shallower
6 - 4
7 - 6
8 - 7
10 - 8
12 - 10
14 - 12
15 - 14
15 and Deeper



- NOTES:
- ELEVATIONS ARE IN FEET AND REFER TO M.L.W.
 - PROJECT SURVEYED WITH DISTRICT SURVEY VESSEL " BUTLER ", USING RTK GPS HORIZONTAL POSITIONING EQUIPMENT AND 200 KHZ SOUNDING EQUIPMENT.
 - HORIZONTAL DATUM NAD 1983. VERTICAL DATUM: BALDHEAD
 - TIDE GAGE LOCATED AT: LOCK 2 UPPER POOL, LOCK 3 LOWER POOL AND LOCK 3 UPPER POOL. USE OF TIDE VALUES FOR THIS GAGE ARE RESTRICTED TO QUALITY ASSURANCE PURPOSES FOR VERIFICATION OF RTK TIDES. THE WILMINGTON DISTRICT WILL ONLY USE STAFF GAGE TIDAL VALUES FOR FINAL MAPPING AND QUANTITY CALCULATIONS IF RTK GPS IS UNAVAILABLE AT THE TIME OF SURVEY.
 - THIS PROJECT WAS DESIGNED BY THE WILMINGTON DISTRICT OF THE U.S. ARMY CORPS OF ENGINEERS. THE INITIALS AND SIGNATURES AND REGISTRATION DESIGNATIONS OF INDIVIDUALS APPEAR ON THESE PROJECT DOCUMENTS WITHIN THE SCOPE OF THEIR EMPLOYMENT AS REQUIRED BY ER1110-1-8152.
 - THE INFORMATION DEPICTED ON THIS SURVEY MAP REPRESENTS THE RESULTS OF SURVEYS MADE ON THE DATES INDICATED AND CAN ONLY BE CONSIDERED AS INDICATING THE GENERAL CONDITIONS EXISTING AT THAT TIME. THESE CONDITIONS ARE SUBJECT TO RAPID CHANGE DUE TO SHOALING EVENTS. A PRUDENT MARINER SHOULD NOT RELY EXCLUSIVELY ON THE INFORMATION PROVIDED HERE. REQUIRED BY 33 CFR 209.325
 - NAVIGATION AIDS LOCATED WITH DISTRICT SURVEY VESSEL. ACCURACY +/- 3 METERS.
 - FOR THE MOST UP TO DATE INFORMATION PLEASE CHECK OUR WEBSITE AT: WWW.SAW.USACE.ARMY.MIL



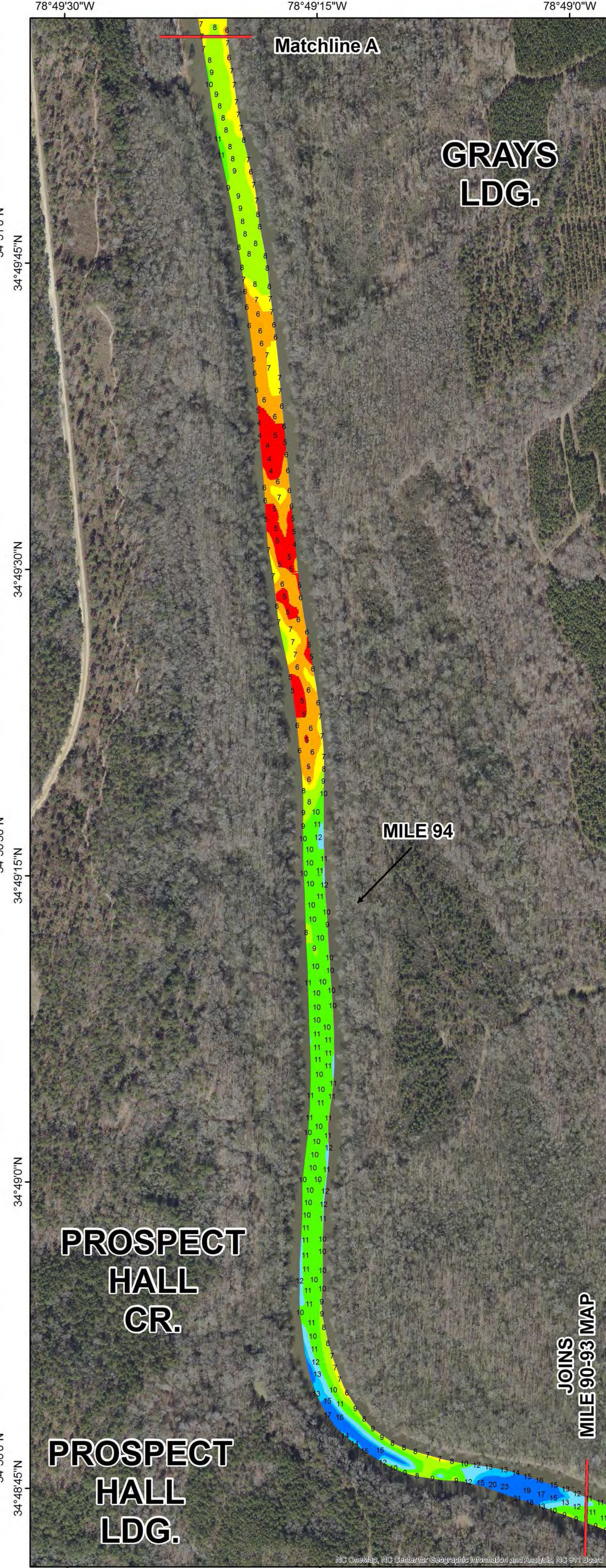
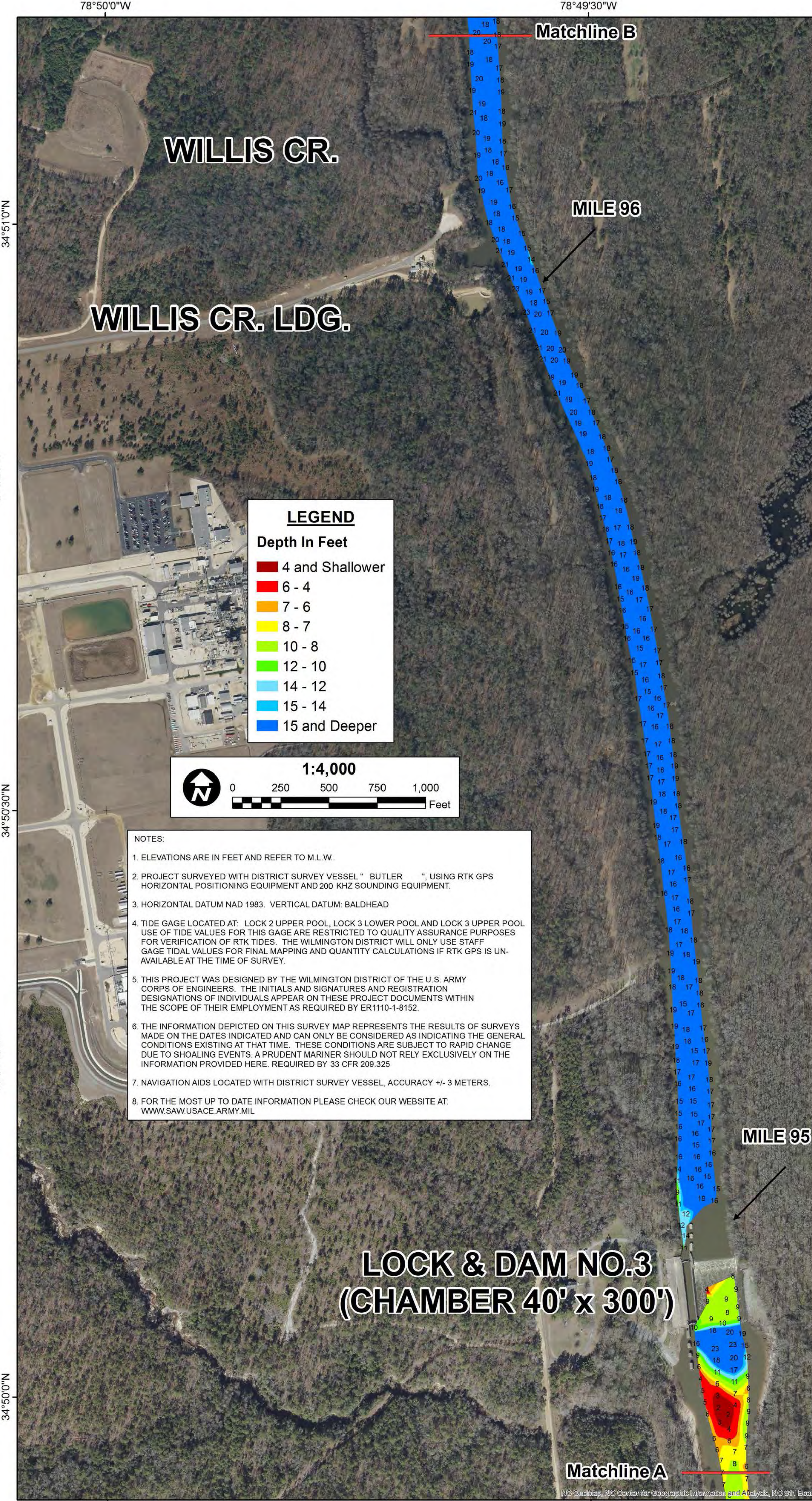
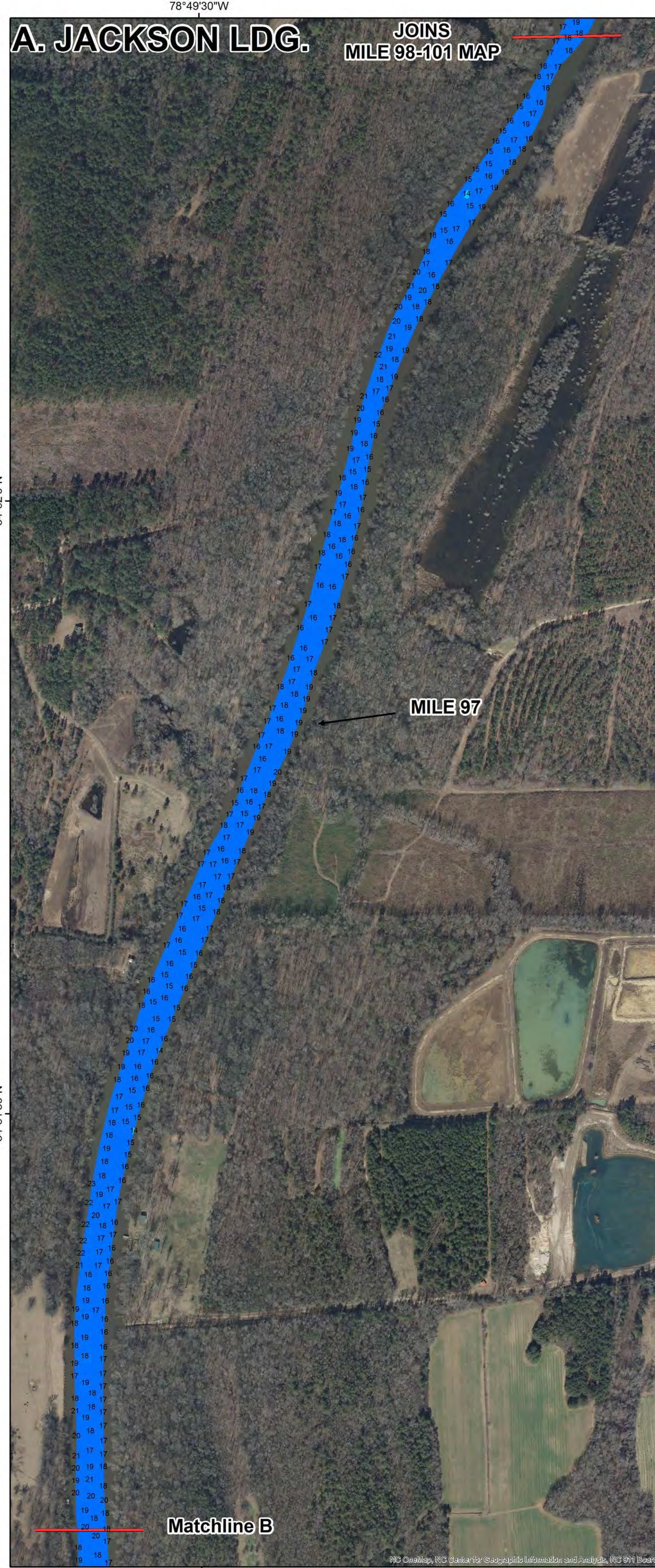
US Army Corps of Engineers
Wilmington District



SURVEY DATE: 30 AUGUST; 13-15 SEPTEMBER 2016	SURVEYED BY: LMT, SRV
MAP DATE: 05 OCTOBER 2016	MAPPED: K7OPNDJM
MAP SCALE: 1:4,000	
© 2012 NCONEMAP	MAP FILE NAME: CFA_MILE90-93_2016-08-30_09-13-14-15.MXD

HYDROGRAPHIC SURVEY
U.S. ARMY ENGINEER DISTRICT
CORPS OF ENGINEERS
WILMINGTON, NORTH CAROLINA

**Cape Fear Above
Mile 90-93**
CAPE FEAR RIVER, NORTH CAROLINA



US Army Corps of Engineers
Wilmington District



SURVEY DATE: 30 AUGUST; 13-15 SEPTEMBER 2016	SURVEYED BY: LMT, SRV
MAP DATE: 05 OCTOBER 2016	MAPPED: K7OPNDJM
MAP SCALE: 1:4,000	
© 2012 NCONEMAP	MAP FILE NAME: CFA_MILE94-97_2016-08-30_09-13-14-15.MXD

HYDROGRAPHIC SURVEY
U.S. ARMY ENGINEER DISTRICT
CORPS OF ENGINEERS
WILMINGTON, NORTH CAROLINA

**Cape Fear Above
Mile 94-97**

CAPE FEAR RIVER, NORTH CAROLINA