

Shackleford  
Banks

# Cutoff - Range A



US Army Corps  
of Engineers  
Wilmington District

Depth In Feet	
20 and Shallower	38 - 42
20 - 25	42 - 44
25 - 32	44 - 45
32 - 35	45 - 47
35 - 38	47 and Deeper

Imagery Date: © March 14, 2016 DigitalGlobe NextView License  
Map Name: 2016\_MHC\_Sequence.mxd

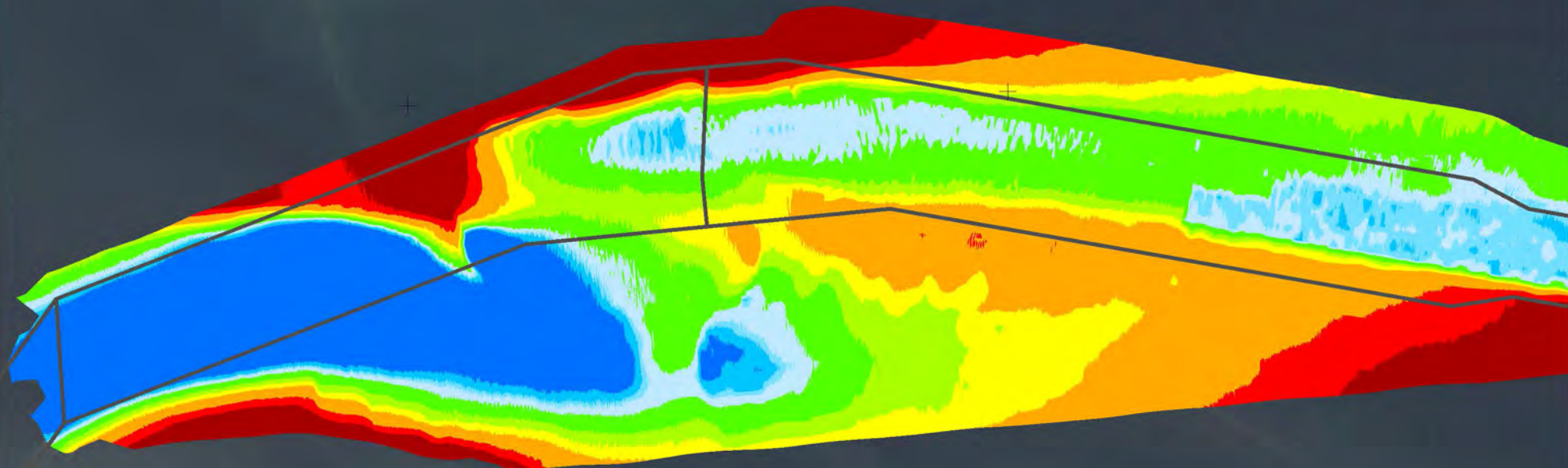
Scale 1 : 9,000



Survey Date:  
October 11-12, 2016

Cutoff

Range A



Fort  
Macon

76°39'30"W

76°40'0"W

76°40'30"W

34°41'30"N

34°41'0"N

34°41'30"N

34°41'0"N

76°39'30"W

76°40'0"W

76°40'30"W

Shackleford  
Banks

# Cutoff - Range A



US Army Corps  
of Engineers  
Wilmington District

Depth In Feet	
20 and Shallower	38 - 42
20 - 25	42 - 44
25 - 32	44 - 45
32 - 35	45 - 47
35 - 38	47 and Deeper

Imagery Date: © March 14, 2016 DigitalGlobe NextView License  
Map Name: 2016\_MHC\_Sequence.mxd

Scale 1 : 9,000



Survey Date:  
October 3-4, 2016

Cutoff

Range A

Fort  
Macon

76°39'30"W

76°40'0"W

76°40'30"W

34°41'30"N

34°41'0"N

34°41'30"N

34°41'0"N

76°39'30"W

76°40'0"W

76°40'30"W

Shackleford  
Banks

# Cutoff - Range A

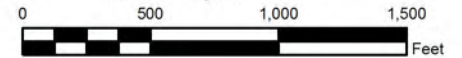


US Army Corps  
of Engineers  
Wilmington District

Depth In Feet	
20 and Shallower	38 - 42
20 - 25	42 - 44
25 - 32	44 - 45
32 - 35	45 - 47
35 - 38	47 and Deeper

Imagery Date: © March 14, 2016 DigitalGlobe NextView License  
Map Name: 2016\_MHC\_Sequence.mxd

Scale 1 : 9,000



Survey Date:  
September 4, 2016

Cutoff

Range A

Fort  
Macon

76°39'30"W

76°40'0"W

76°40'30"W

34°41'30"N

34°41'0"N

34°41'30"N

34°41'0"N

76°39'30"W

76°40'0"W

76°40'30"W

Shackleford  
Banks

# Cutoff - Range A

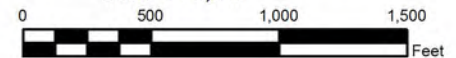


US Army Corps  
of Engineers  
Wilmington District

Depth In Feet	
20 and Shallower	38 - 42
20 - 25	42 - 44
25 - 32	44 - 45
32 - 35	45 - 47
35 - 38	47 and Deeper

Imagery Date: © March 14, 2016 DigitalGlobe NextView License  
Map Name: 2016\_MHC\_Sequence.mxd

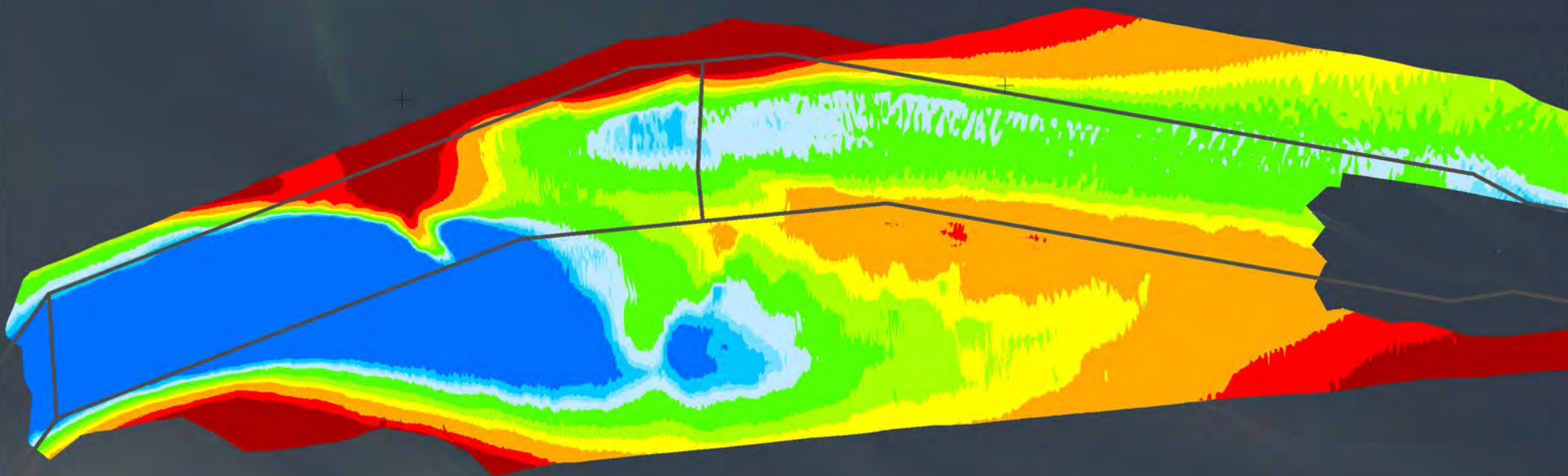
Scale 1 : 9,000



Survey Date:  
17-19 & 23-25 August 2016

Cutoff

Range A



Fort  
Macon

76°39'30"W

76°40'0"W

76°40'30"W

34°41'30"N

34°41'0"N

34°41'30"N

34°41'0"N

76°39'30"W

76°40'0"W

76°40'30"W

Shackleford  
Banks

# Cutoff - Range A

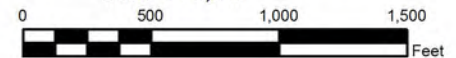


US Army Corps  
of Engineers  
Wilmington District

Depth In Feet	
20 and Shallower	38 - 42
20 - 25	42 - 44
25 - 32	44 - 45
32 - 35	45 - 47
35 - 38	47 and Deeper

Imagery Date: © March 14, 2016 DigitalGlobe NextView License  
Map Name: 2016\_MHC\_Sequence.mxd

Scale 1 : 9,000

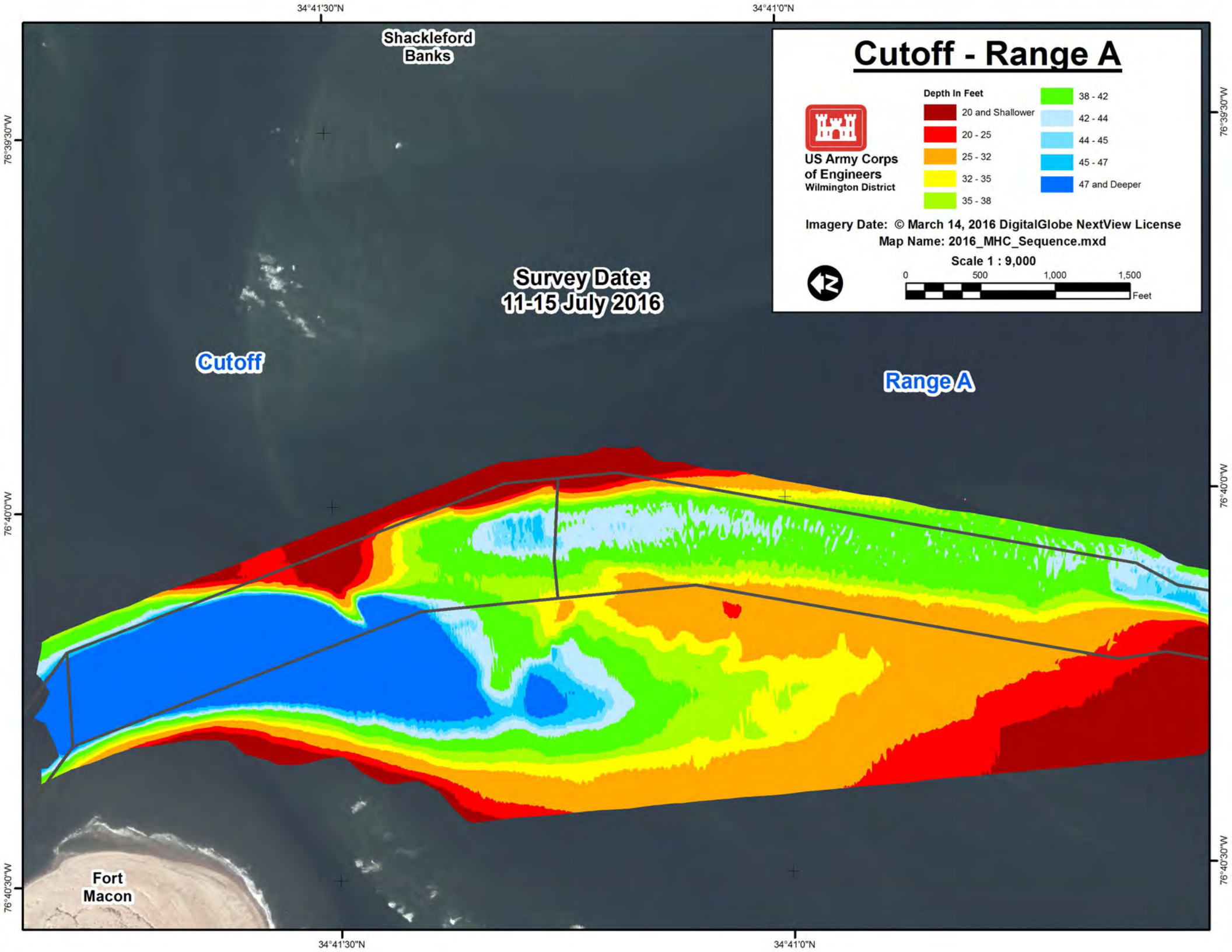


Survey Date:  
11-15 July 2016

Cutoff

Range A

Fort  
Macon



Shackleford  
Banks

# Cutoff - Range A

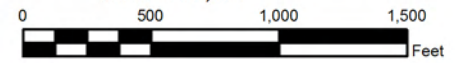


US Army Corps  
of Engineers  
Wilmington District

Depth In Feet	
20 and Shallower	38 - 42
20 - 25	42 - 44
25 - 32	44 - 45
32 - 35	45 - 47
35 - 38	47 and Deeper

Imagery Date: © March 14, 2016 DigitalGlobe NextView License  
Map Name: 2016\_MHC\_Sequence.mxd

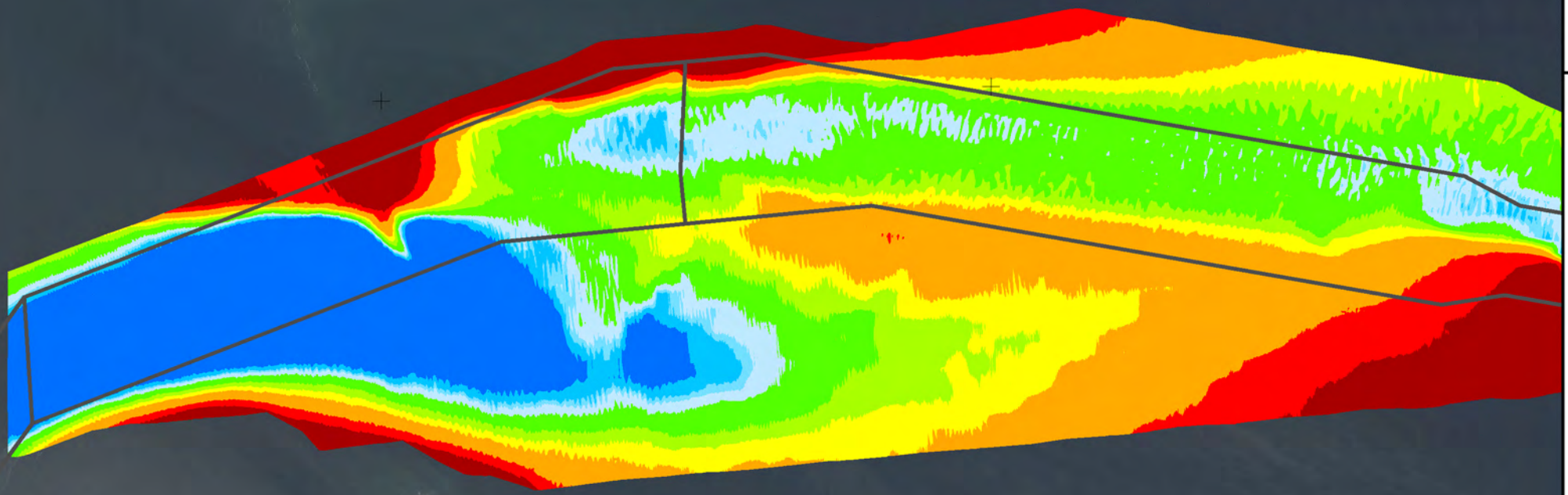
Scale 1 : 9,000



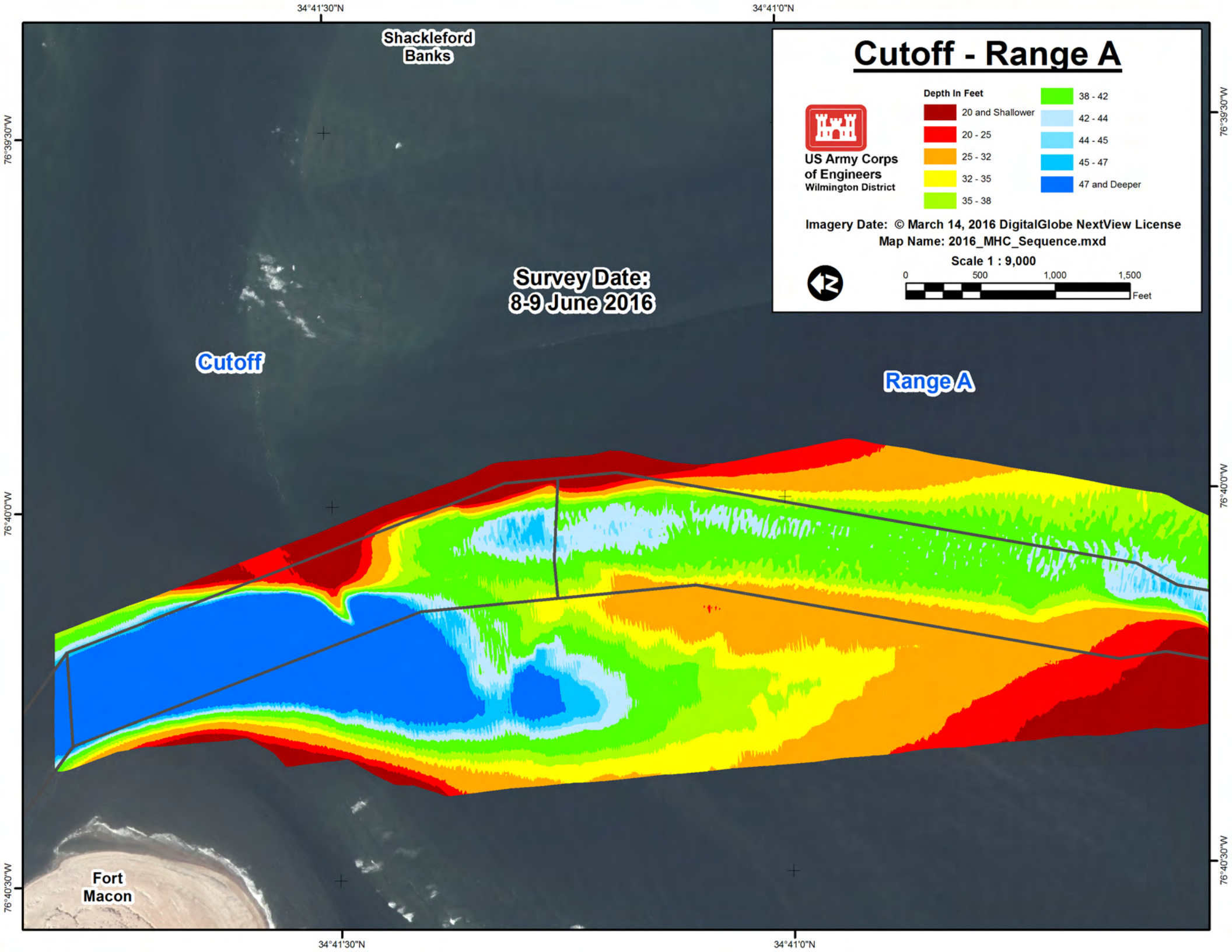
Survey Date:  
8-9 June 2016

Cutoff

Range A



Fort  
Macon



Shackleford  
Banks

# Cutoff - Range A

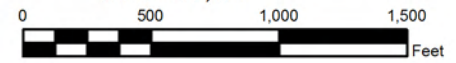


US Army Corps  
of Engineers  
Wilmington District

Depth In Feet	
20 and Shallower	38 - 42
20 - 25	42 - 44
25 - 32	44 - 45
32 - 35	45 - 47
35 - 38	47 and Deeper

Imagery Date: © March 14, 2016 DigitalGlobe NextView License  
Map Name: 2016\_MHC\_Sequence.mxd

Scale 1 : 9,000

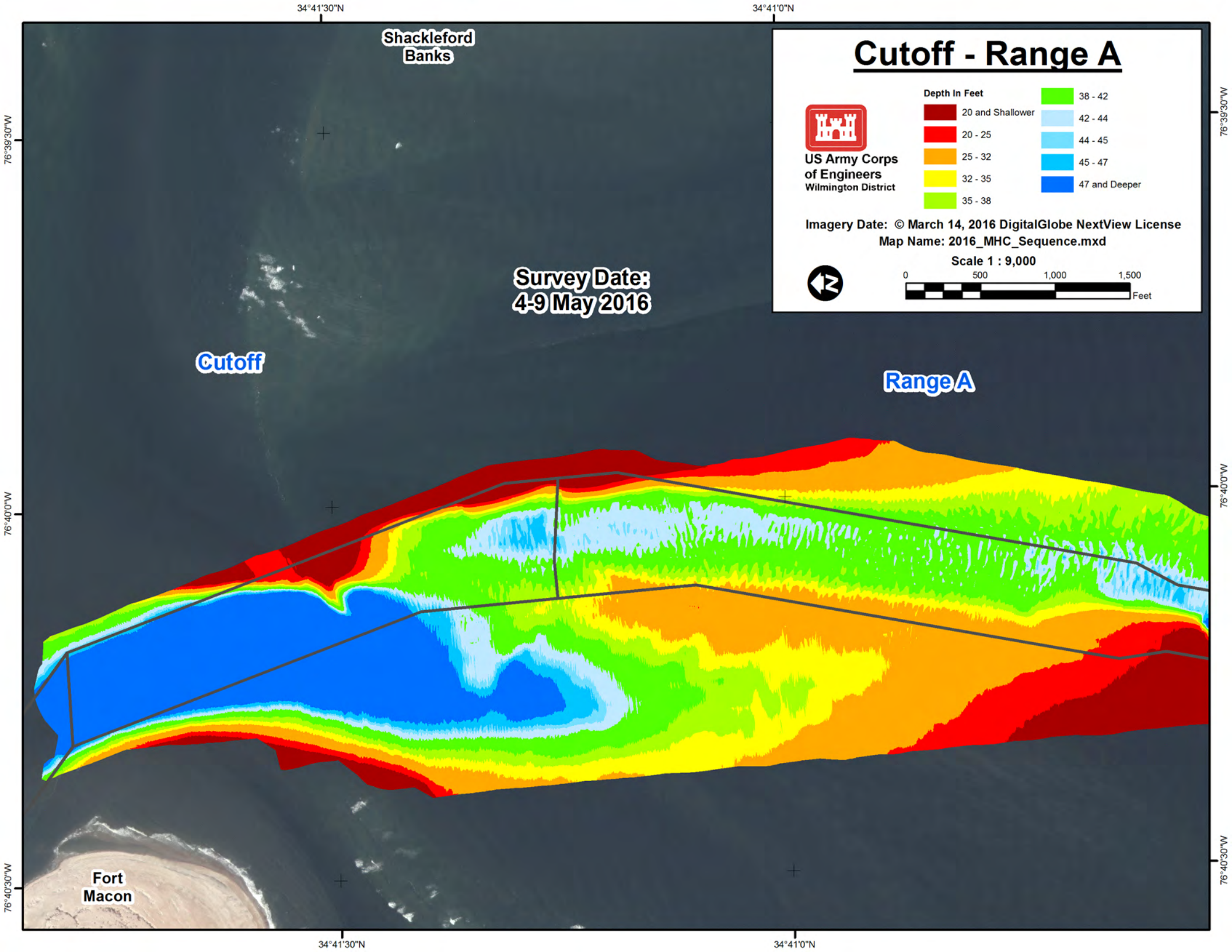


Survey Date:  
4-9 May 2016

Cutoff

Range A

Fort  
Macon

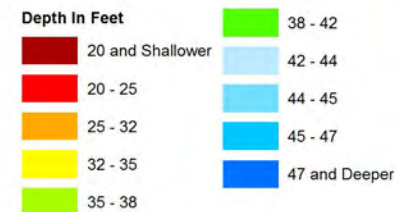


Shackleford  
Banks

# Cutoff - Range A

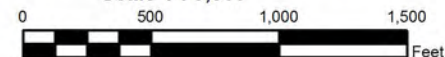


US Army Corps  
of Engineers  
Wilmington District



Imagery Date: © March 14, 2016 DigitalGlobe NextView License  
Map Name: 2016\_MHC\_Sequence.mxd

Scale 1 : 9,000



Survey Date:  
28 March - 4 April 2016

Cutoff

Range A

Fort  
Macon

34°41'30"N

34°41'0"N

76°40'30"W

76°40'0"W

76°39'30"W



Shackleford  
Banks

# Cutoff - Range A

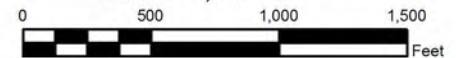


US Army Corps  
of Engineers  
Wilmington District

Depth In Feet	
20 and Shallower	38 - 42
20 - 25	42 - 44
25 - 32	44 - 45
32 - 35	45 - 47
35 - 38	47 and Deeper

Imagery Date: © March 14, 2016 DigitalGlobe NextView License  
Map Name: 2016\_MHC\_Sequence.mxd

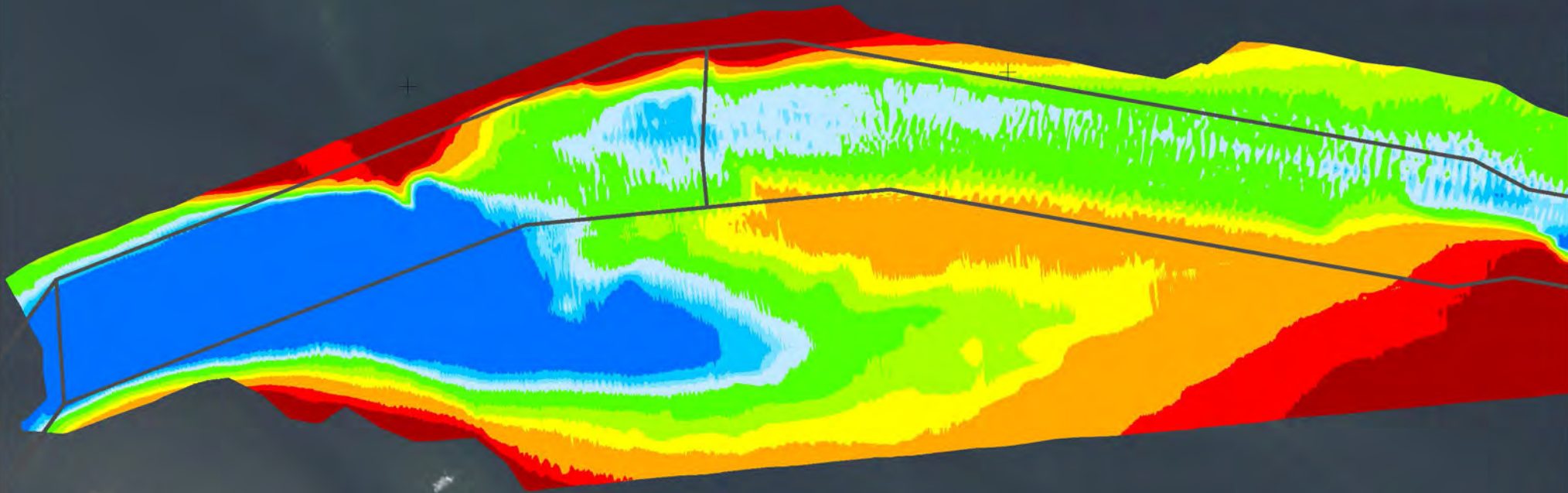
Scale 1 : 9,000



Survey Date:  
23 February - 1 March 2016

Cutoff

Range A



Fort  
Macon

76°39'30"W

76°40'0"W

76°40'30"W

34°41'30"N

34°41'0"N

34°41'30"N

34°41'0"N

76°39'30"W

76°40'0"W

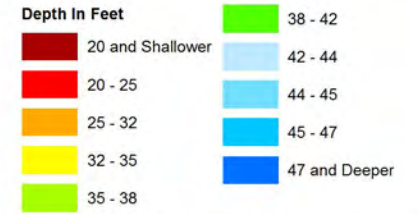
76°40'30"W

Shackleford  
Banks

# Cutoff - Range A



US Army Corps  
of Engineers  
Wilmington District



Imagery Date: © March 14, 2016 DigitalGlobe NextView License  
Map Name: 2016\_MHC\_Sequence.mxd

Scale 1 : 9,000



Survey Date:  
12-13 & 19-20 January 2016

Cutoff

Range A

Fort  
Macon

34°41'30"N

34°41'0"N

76°39'30"W

76°39'30"W

76°40'0"W

76°40'0"W

76°40'30"W

76°40'30"W