

Shackleford
Banks

Cutoff - Range A



US Army Corps
of Engineers
Wilmington District

Depth In Feet

Dark Red	20 and Shallower	Light Blue	38 - 42
Red	20 - 25	Medium Light Blue	42 - 44
Orange	25 - 32	Light Blue	44 - 45
Yellow	32 - 35	Medium Blue	45 - 47
Light Green	35 - 38	Dark Blue	47 and Deeper

Imagery Date: January 15, 2015 ©2015 Digital Globe NextView License

Map Name: 2015_MHC_Sequence.mxd

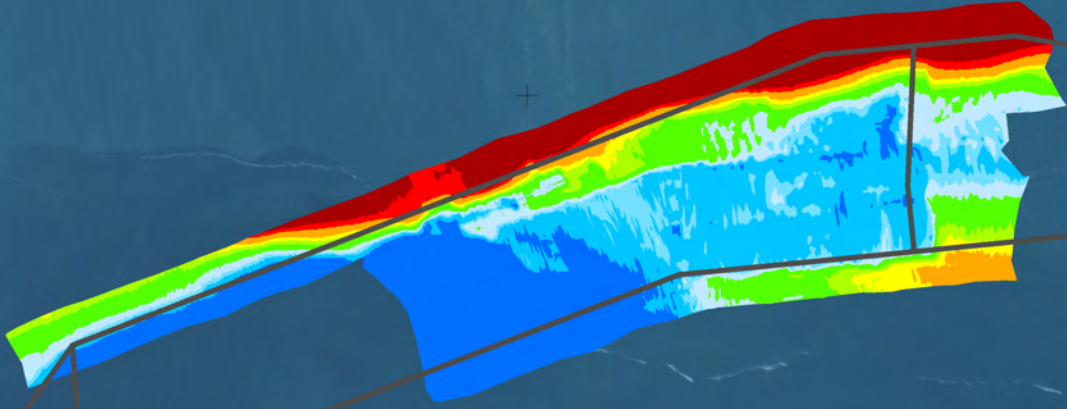
Scale 1 : 9,000



Survey Date:
14 & 15 December 2015

Cutoff

Range A



Fort
Macon

76°39'30"W

76°40'00"W

76°40'30"W

34°41'30"N

34°41'0"N

34°41'30"N

34°41'0"N

76°39'30"W

76°40'00"W

76°40'30"W

Shackleford
Banks

Cutoff - Range A



US Army Corps
of Engineers
Wilmington District

Depth In Feet

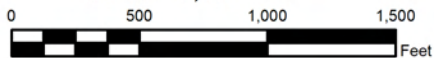
- 20 and Shallower
- 20 - 25
- 25 - 32
- 32 - 35
- 35 - 38

- 38 - 42
- 42 - 44
- 44 - 45
- 45 - 47
- 47 and Deeper

Imagery Date: January 15, 2015 ©2015 Digital Globe NextView License

Map Name: 2015_MHC_Sequence.mxd

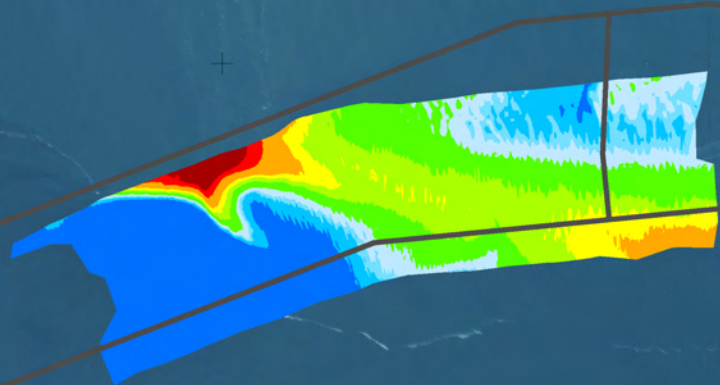
Scale 1 : 9,000



**Survey Date:
17 November 2015**

Cutoff

Range A



Fort
Macon

76°39'30"W

76°40'00"W

76°40'30"W

34°41'30"N

34°41'30"N

34°41'0"N

34°41'0"N

76°39'30"W

76°40'00"W

76°40'30"W

Shackleford
Banks

Cutoff - Range A



US Army Corps
of Engineers
Wilmington District

Depth In Feet

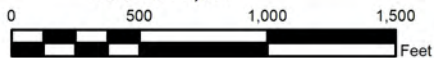
- 20 and Shallower
- 20 - 25
- 25 - 32
- 32 - 35
- 35 - 38

- 38 - 42
- 42 - 44
- 44 - 45
- 45 - 47
- 47 and Deeper

Imagery Date: January 15, 2015 ©2015 Digital Globe NextView License

Map Name: 2015_MHC_Sequence.mxd

Scale 1 : 9,000



Survey Date:
3 & 4 November 2015

Cutoff

Range A

Fort
Macon

34°41'30"N

34°41'0"N

76°39'30"W

76°40'0"W

76°40'30"W

76°39'30"W

76°40'0"W

76°40'30"W

Shackleford
Banks

Cutoff - Range A



US Army Corps
of Engineers
Wilmington District

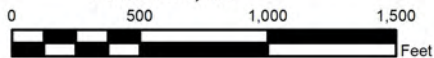
Depth In Feet

Dark Red	20 and Shallower	Light Blue	38 - 42
Red	20 - 25	Medium Light Blue	42 - 44
Orange	25 - 32	Light Blue	44 - 45
Yellow	32 - 35	Medium Blue	45 - 47
Light Green	35 - 38	Dark Blue	47 and Deeper

Imagery Date: January 15, 2015 ©2015 Digital Globe NextView License

Map Name: 2015_MHC_Sequence.mxd

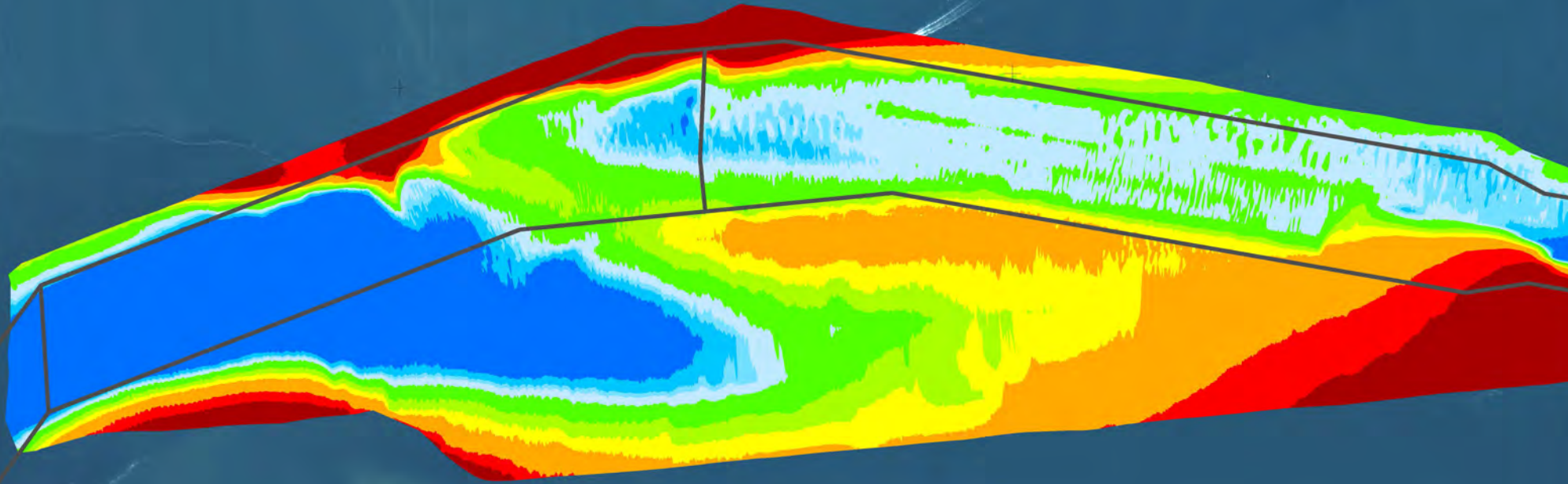
Scale 1 : 9,000



Survey Date:
6 & 7 October 2015

Cutoff

Range A



Fort
Macon

76°39'30"W

76°40'0"W

76°40'30"W

34°41'30"N

34°41'0"N

76°39'30"W

76°40'0"W

76°40'30"W

Shackleford
Banks

Cutoff - Range A



US Army Corps
of Engineers
Wilmington District

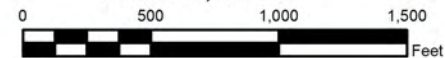
Depth In Feet

Dark Red	20 and Shallower	Light Blue	38 - 42
Red	20 - 25	Medium Light Blue	42 - 44
Orange	25 - 32	Light Blue	44 - 45
Yellow	32 - 35	Medium Blue	45 - 47
Light Green	35 - 38	Dark Blue	47 and Deeper

Imagery Date: January 15, 2015 ©2015 Digital Globe NextView License

Map Name: 2015_MHC_Sequence.mxd

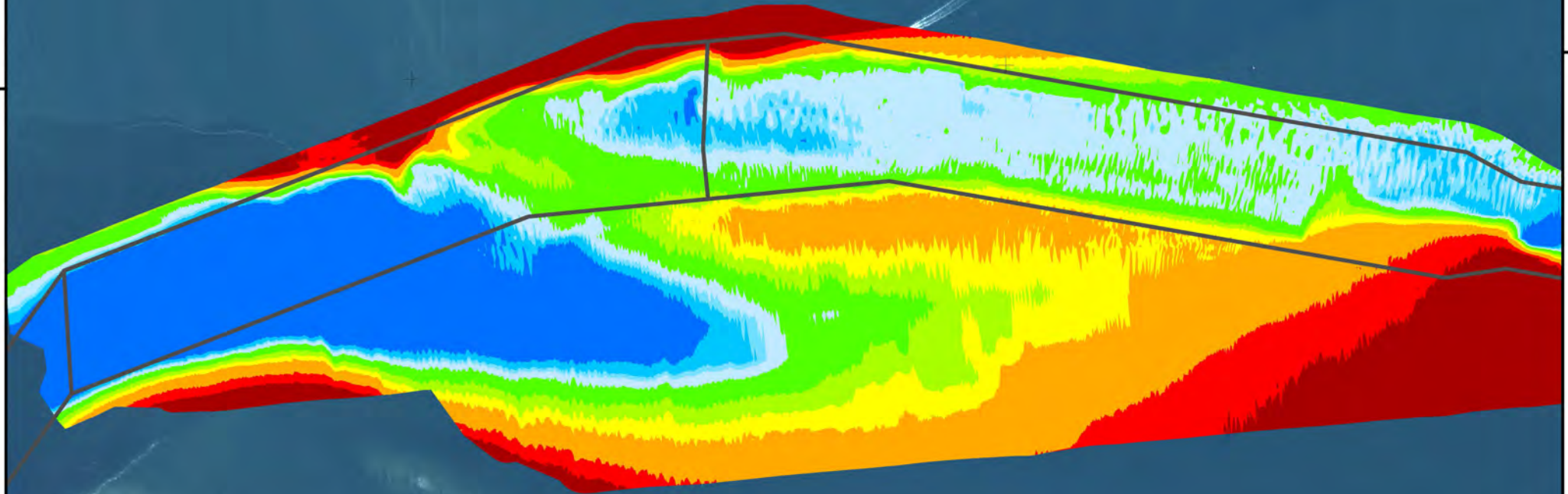
Scale 1 : 9,000



Survey Date:
1 October 2015

Cutoff

Range A



Fort
Macon

34°41'30"N

34°41'0"N

76°39'30"W

76°40'0"W

76°40'30"W

76°39'30"W

76°40'0"W

76°40'30"W

Shackleford
Banks

Cutoff - Range A



US Army Corps
of Engineers
Wilmington District

Depth In Feet

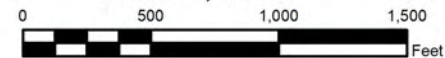
- 20 and Shallower
- 20 - 25
- 25 - 32
- 32 - 35
- 35 - 38

- 38 - 42
- 42 - 44
- 44 - 45
- 45 - 47
- 47 and Deeper

Imagery Date: January 15, 2015 ©2015 Digital Globe NextView License

Map Name: 2015_MHC_Sequence.mxd

Scale 1 : 9,000



Survey Date:
15-17 September 2015

Cutoff

Range A

Fort
Macon

34°41'30"N

34°41'0"N

76°39'30"W

76°39'30"W

76°40'0"W

76°40'0"W

76°40'30"W

76°40'30"W

Shackleford Banks

Cutoff - Range A



US Army Corps of Engineers
Wilmington District

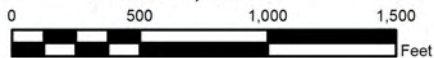
Depth In Feet

Dark Red	20 and Shallower	Light Blue	38 - 42
Red	20 - 25	Medium Light Blue	42 - 44
Orange	25 - 32	Light Blue	44 - 45
Yellow	32 - 35	Medium Blue	45 - 47
Light Green	35 - 38	Dark Blue	47 and Deeper

Imagery Date: January 15, 2015 ©2015 Digital Globe NextView License

Map Name: 2015_MHC_Sequence.mxd

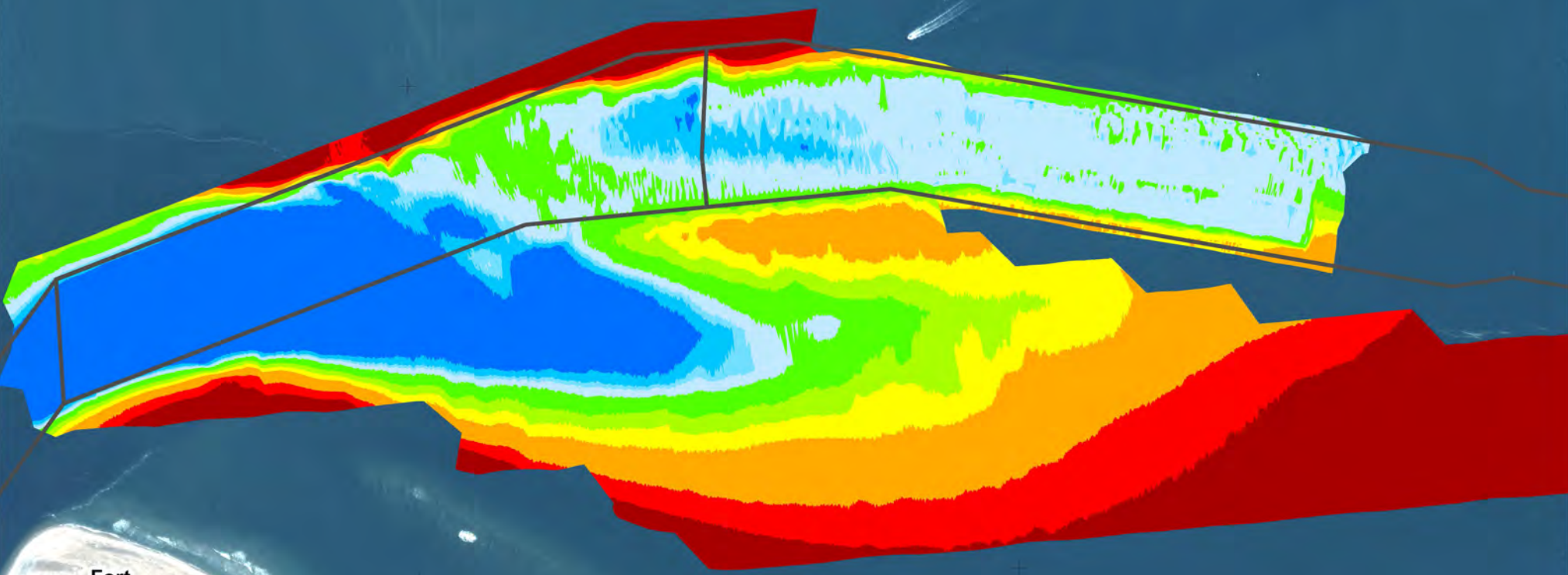
Scale 1 : 9,000



Survey Date:
18 - 20 August 2015

Cutoff

Range A



Fort Macon

76°39'30"W

76°40'0"W

76°40'30"W

34°41'30"N

34°41'0"N

34°41'30"N

34°41'0"N

76°39'30"N

76°40'0"N

76°40'30"N

Shackleford
Banks

Cutoff - Range A



US Army Corps
of Engineers
Wilmington District

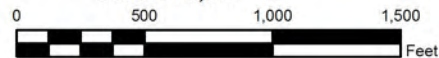
Depth In Feet

- 20 and Shallower
- 20 - 25
- 25 - 32
- 32 - 35
- 35 - 38

- 38 - 42
- 42 - 44
- 44 - 45
- 45 - 47
- 47 and Deeper

Imagery Date: January 15, 2015 ©Digital Globe Inc.
Map Name: 2015_MHC_Sequence.mxd

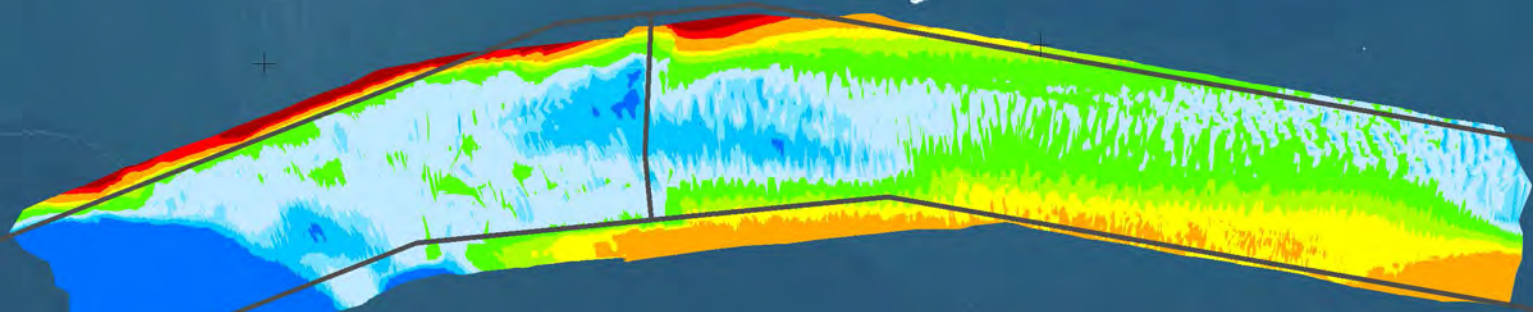
Scale 1 : 9,000



Survey Date:
19 - 20 & 25 July 2015

Cutoff

Range A



Fort
Macon

76°39'30"W

76°40'0"W

76°40'30"W

34°41'30"N

34°41'0"N

34°41'30"N

34°41'0"N

76°39'30"W

76°40'0"W

76°40'30"W

Shackleford
Banks

Cutoff - Range A



US Army Corps
of Engineers
Wilmington District

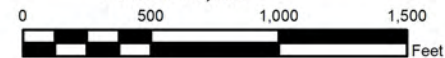
Depth In Feet

- 20 and Shallower
- 20 - 25
- 25 - 32
- 32 - 35
- 35 - 38

- 38 - 42
- 42 - 44
- 44 - 45
- 45 - 47
- 47 and Deeper

Imagery Date: January 15, 2015 ©Digital Globe Inc.
Map Name: 2015_MHC_Sequence.mxd

Scale 1 : 9,000



Survey Date:
29-30 June & 6-7 July 2015

Cutoff

Range A

Fort
Macon

76°39'30"W

76°40'00"W

76°40'30"W

34°41'30"N

34°41'0"N

34°41'30"N

34°41'0"N

76°39'30"N

76°40'00"N

76°40'30"N

Shackleford
Banks

Cutoff - Range A

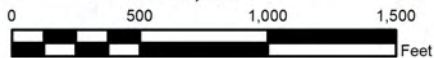


US Army Corps
of Engineers
Wilmington District

Depth In Feet	
20 and Shallower	38 - 42
20 - 25	42 - 44
25 - 32	44 - 45
32 - 35	45 - 47
35 - 38	47 and Deeper

Imagery Date: January 15, 2015 ©Digital Globe Inc.
Map Name: 2015_MHC_Sequence.mxd

Scale 1 : 9,000



Survey Date:
4 June, 2015

Cutoff

Range A

Fort
Macon

76°39'30"W

76°40'0"W

76°40'30"W

34°41'30"N

34°41'0"N

34°41'30"N

34°41'0"N

76°39'30"N

76°40'0"N

76°40'30"N

Shackleford Banks

Cutoff - Range A

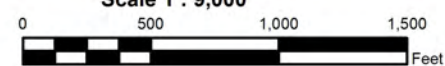


US Army Corps of Engineers
Wilmington District

Depth In Feet	
20 and Shallower	38 - 42
20 - 25	42 - 44
25 - 32	44 - 45
32 - 35	45 - 47
35 - 38	47 and Deeper

Imagery Date: January 15, 2015 ©Digital Globe Inc.
Map Name: 2015_MHC_Sequence.mxd

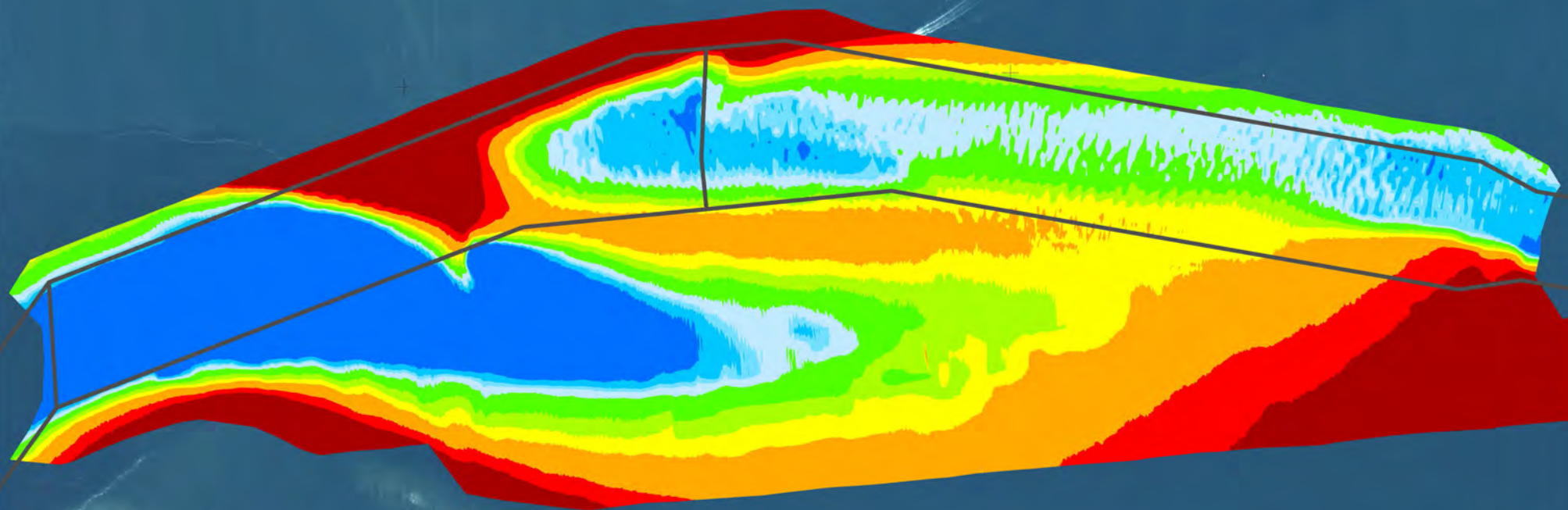
Scale 1 : 9,000



Survey Date:
13 May, 2015

Cutoff

Range A



Fort Macon

76°39'30"W

76°40'0"W

76°40'30"W

34°41'30"N

34°41'0"N

34°41'30"N

34°41'0"N

76°39'30"W

76°40'0"W

76°40'30"W

Shackleford
Banks

Cutoff - Range A



US Army Corps
of Engineers
Wilmington District

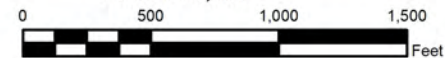
Depth In Feet

- 20 and Shallower
- 20 - 25
- 25 - 32
- 32 - 35
- 35 - 38

- 38 - 42
- 42 - 44
- 44 - 45
- 45 - 47
- 47 and Deeper

Imagery Date: January 15, 2015 ©Digital Globe Inc.
Map Name: 2015_MHC_Sequence.mxd

Scale 1 : 9,000



Survey Date:
April 28 - 5 May, 2015

Cutoff

Range A

Fort
Macon

76°39'30"W

76°40'0"W

76°40'30"W

34°41'30"N

34°41'0"N

34°41'30"N

34°41'0"N

76°39'30"W

76°40'0"W

76°40'30"W

Shackleford
Banks

Cutoff - Range A



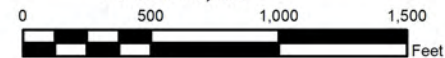
US Army Corps
of Engineers
Wilmington District

Depth In Feet

Dark Red	20 and Shallower	Light Blue	38 - 42
Red	20 - 25	Medium Light Blue	42 - 44
Orange	25 - 32	Light Blue	44 - 45
Yellow	32 - 35	Medium Blue	45 - 47
Light Green	35 - 38	Dark Blue	47 and Deeper

Imagery Date: January 15, 2015 ©Digital Globe Inc.
Map Name: 2015_MHC_Sequence.mxd

Scale 1 : 9,000



Survey Date:
March 31 & April 1, 2015

Cutoff

Range A

Fort
Macon

76°39'30"W

76°40'0"W

76°40'30"W

34°41'30"N

34°41'0"N

34°41'30"N

34°41'0"N

76°39'30"W

76°40'0"W

76°40'30"W

Shackleford Banks

Cutoff - Range A

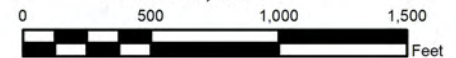


US Army Corps of Engineers
Wilmington District

Depth In Feet	
20 and Shallower	38 - 42
20 - 25	42 - 44
25 - 32	44 - 45
32 - 35	45 - 47
35 - 38	47 and Deeper

Imagery Date: January 15, 2015 ©Digital Globe Inc.
Map Name: 2015_MHC_Sequence.mxd

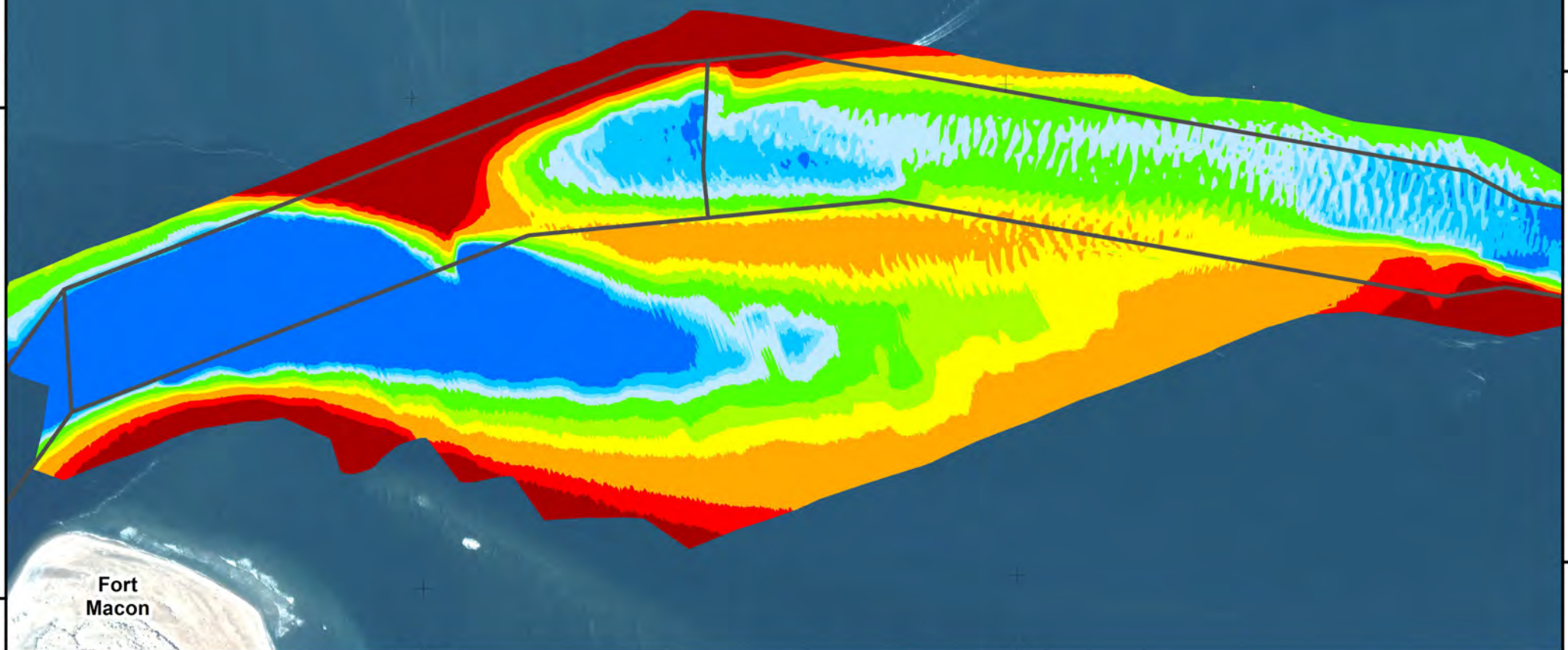
Scale 1 : 9,000



Survey Date:
March 2-10, 2015

Cutoff

Range A



Fort Macon

34°41'30\"N

34°41'0\"N

76°39'30\"W

76°40'0\"W

76°40'30\"W

76°39'30\"W

76°40'0\"W

76°40'30\"W

Shackleford
Banks

Cutoff - Range A



US Army Corps
of Engineers
Wilmington District

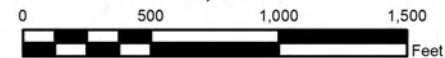
Depth In Feet

- 20 and Shallower
- 20 - 25
- 25 - 32
- 32 - 35
- 35 - 38

- 38 - 42
- 42 - 44
- 44 - 45
- 45 - 47
- 47 and Deeper

Imagery Date: January 15, 2015 ©Digital Globe Inc.
Map Name: 2015_MHC_Sequence.mxd

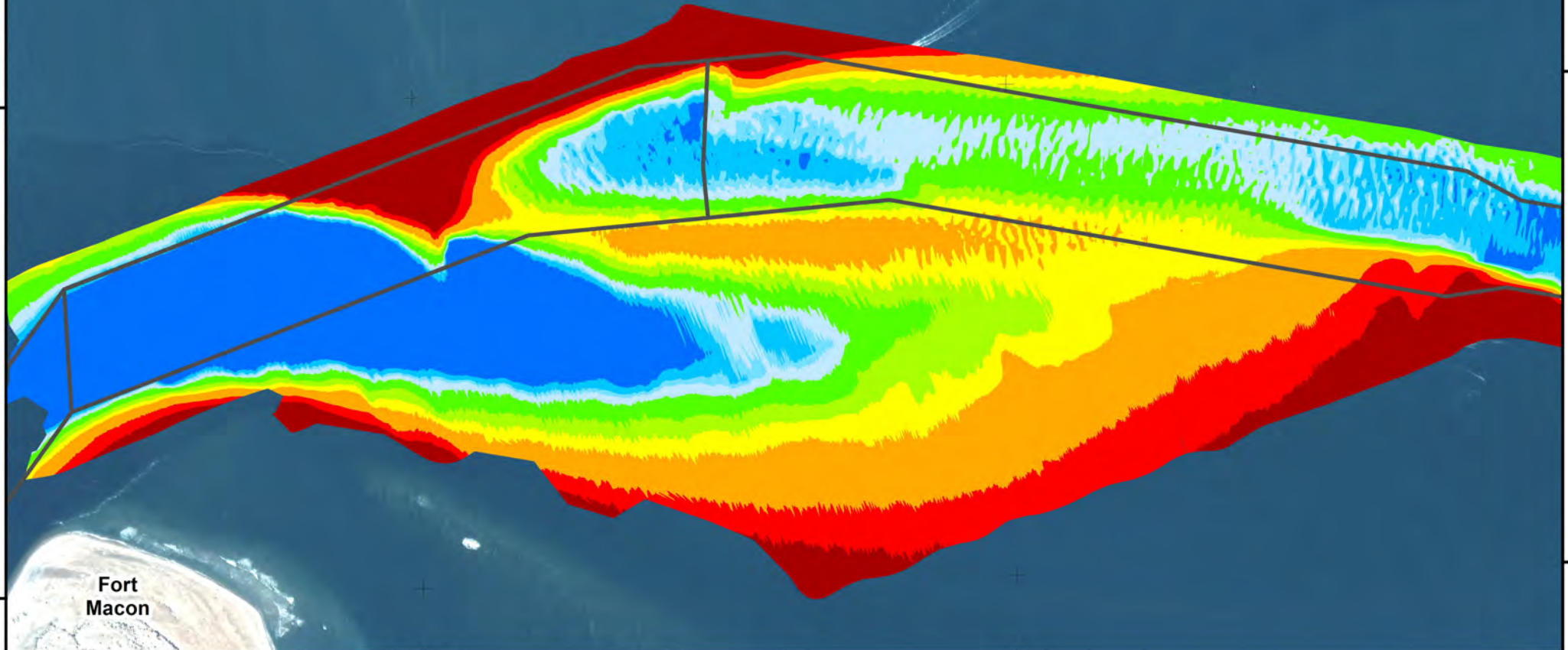
Scale 1 : 9,000



Survey Date:
February 12-18, 2015

Cutoff

Range A



Fort
Macon

76°39'30"W

76°40'0"W

76°40'30"W

34°41'30"N

34°41'0"N

34°41'30"N

34°41'0"N

76°39'30"N

76°40'0"N

76°40'30"N

Shackleford
Banks

Cutoff - Range A



US Army Corps
of Engineers
Wilmington District

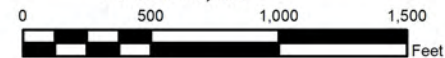
Depth In Feet

- 20 and Shallower
- 20 - 25
- 25 - 32
- 32 - 35
- 35 - 38

- 38 - 42
- 42 - 44
- 44 - 45
- 45 - 47
- 47 and Deeper

Imagery Date: January 15, 2015 ©Digital Globe Inc.
Map Name: 2015_MHC_Sequence.mxd

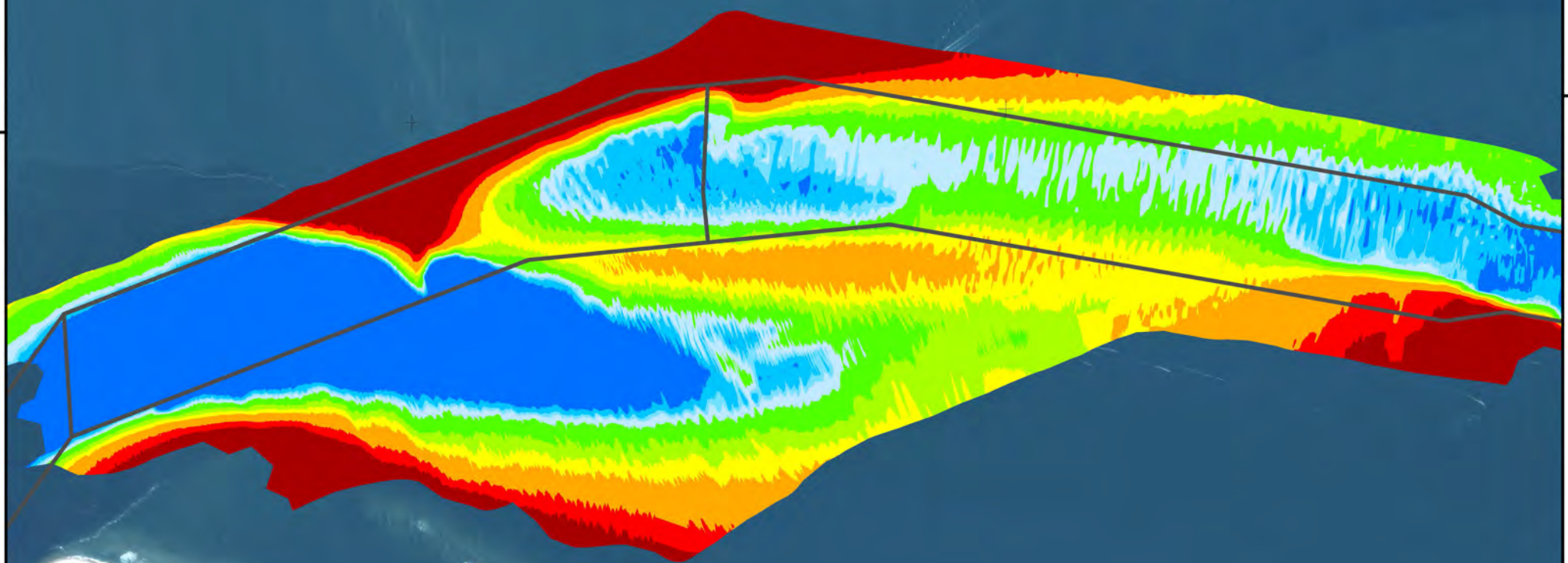
Scale 1 : 9,000



Survey Date:
January 6, 13, 21, 2015

Cutoff

Range A



Fort
Macon

34°41'30"N

34°41'0"N

76°39'30"W

76°40'0"W

76°40'30"W

76°39'30"W

76°40'0"W

76°40'30"W