

Shackleford  
Banks

# Cutoff - Range A



US Army Corps  
of Engineers  
Wilmington District

Depth In Feet

20 and Shallower

20 - 25

25 - 32

32 - 35

35 - 38

38 - 42

42 - 44

44 - 45

45 - 47

47 and Deeper

Imagery Date: April 27, 2014 ©Digital Globe Inc.

Map Name: 2014\_MHC\_Sequence.mxd

Scale 1 : 9,000



Survey Date:  
October 2, 2014

Cutoff

Range A

Fort  
Macon

34°41'30"N

34°41'0"N

76°39'30"W

76°40'0"W

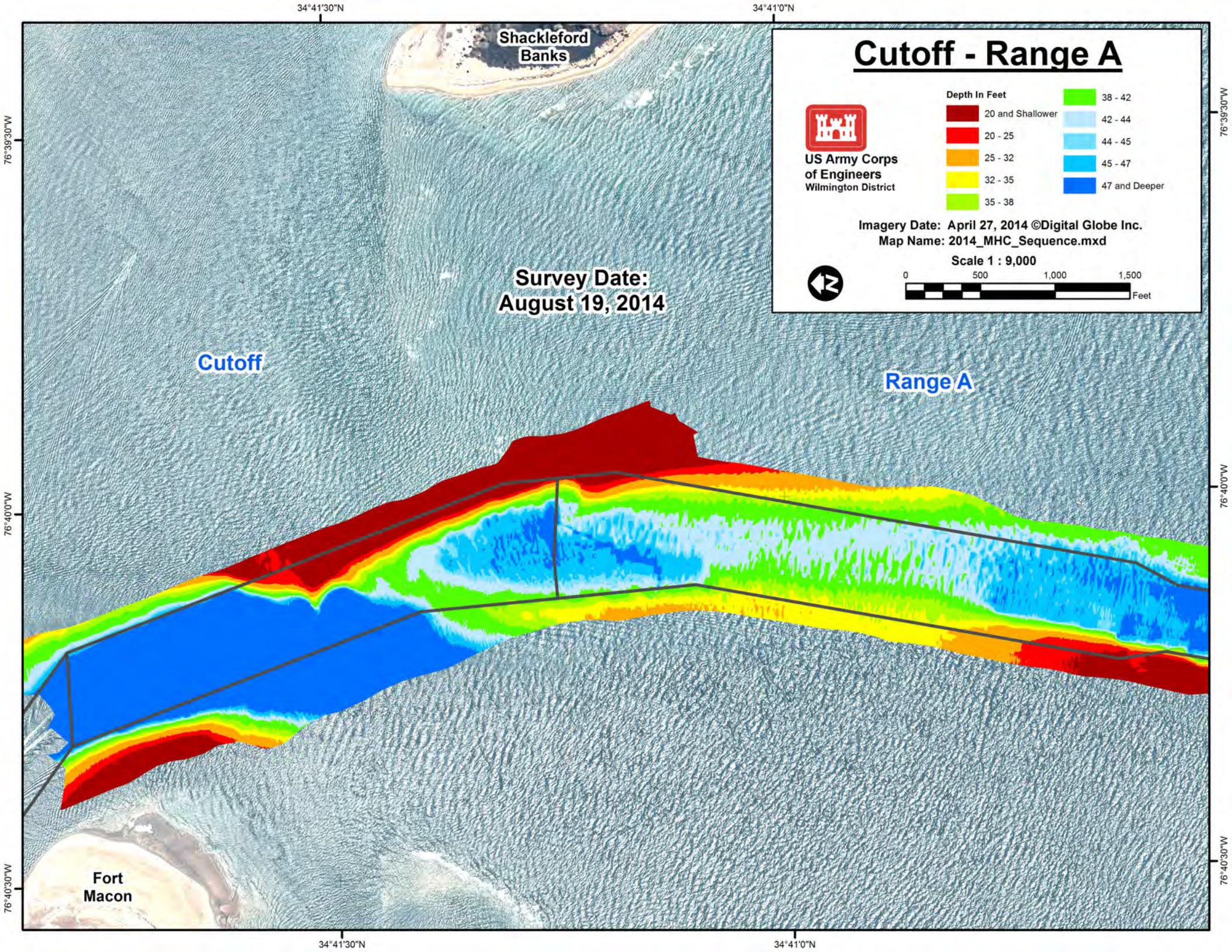
76°40'30"W

76°39'30"W

76°40'0"W

76°40'30"W





34°41'30"N 34°41'0"N

76°39'30"W

76°39'30"W

# Cutoff - Range A



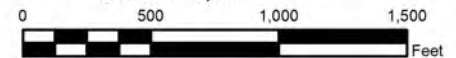
US Army Corps  
of Engineers  
Wilmington District

Depth In Feet

Dark Red	20 and Shallower	Light Blue	38 - 42
Red	20 - 25	Medium Light Blue	42 - 44
Orange	25 - 32	Light Blue	44 - 45
Yellow	32 - 35	Medium Blue	45 - 47
Light Green	35 - 38	Dark Blue	47 and Deeper

Imagery Date: April 27, 2014 ©Digital Globe Inc.  
Map Name: 2014\_MHC\_Sequence.mxd

Scale 1 : 9,000



Survey Date:  
August 19, 2014

Cutoff

Range A

76°40'00"W

76°40'00"W

Fort  
Macon

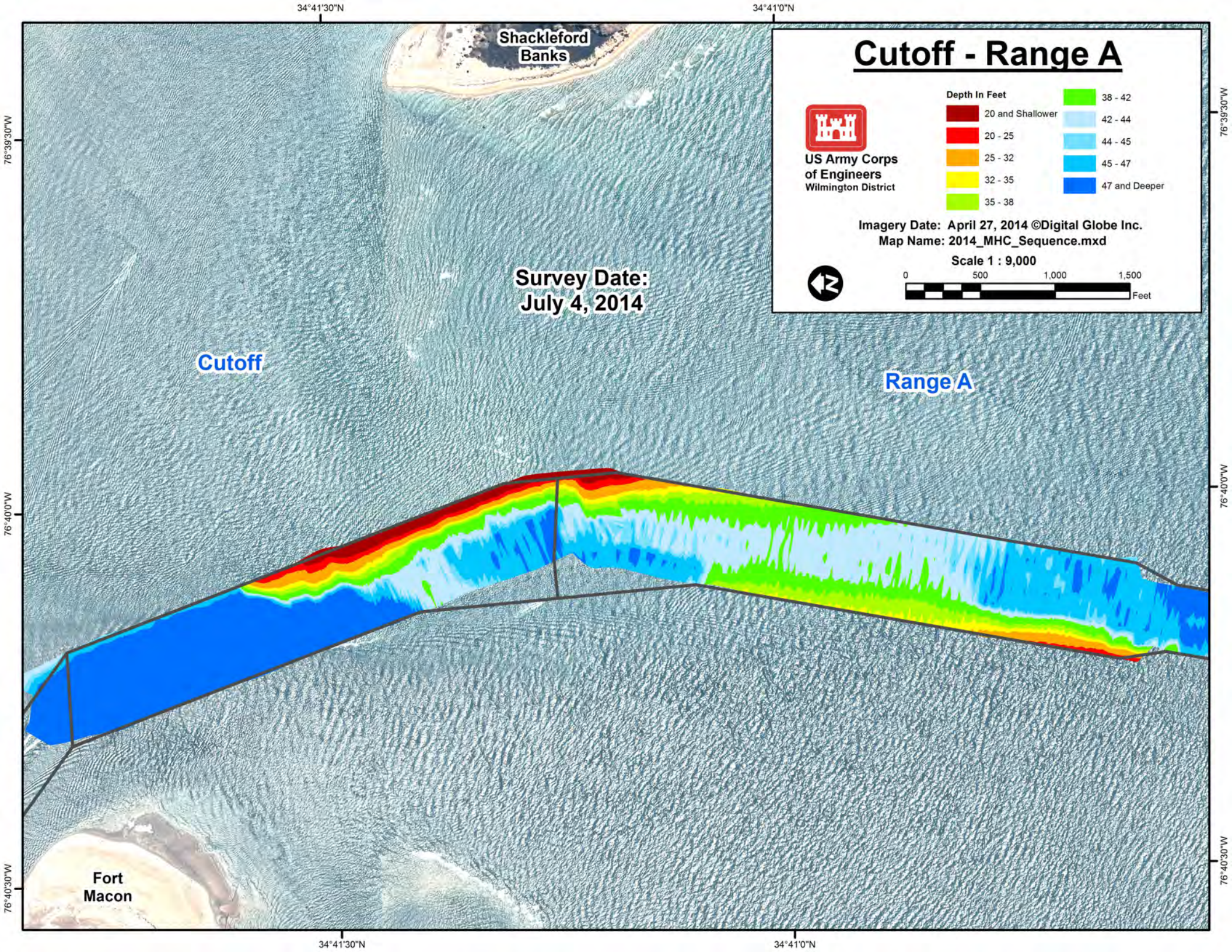
76°40'30"W

76°40'30"W

34°41'30"N

34°41'0"N





Shackleford Banks

# Cutoff - Range A

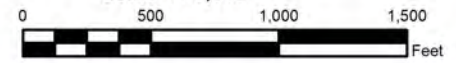


US Army Corps of Engineers  
Wilmington District

Depth In Feet	
20 and Shallower	38 - 42
20 - 25	42 - 44
25 - 32	44 - 45
32 - 35	45 - 47
35 - 38	47 and Deeper

Imagery Date: April 27, 2014 ©Digital Globe Inc.  
Map Name: 2014\_MHC\_Sequence.mxd

Scale 1 : 9,000



Survey Date:  
July 4, 2014

Cutoff

Range A

Fort Macon

34°41'30"N

34°41'0"N

76°39'30"W

76°39'30"W

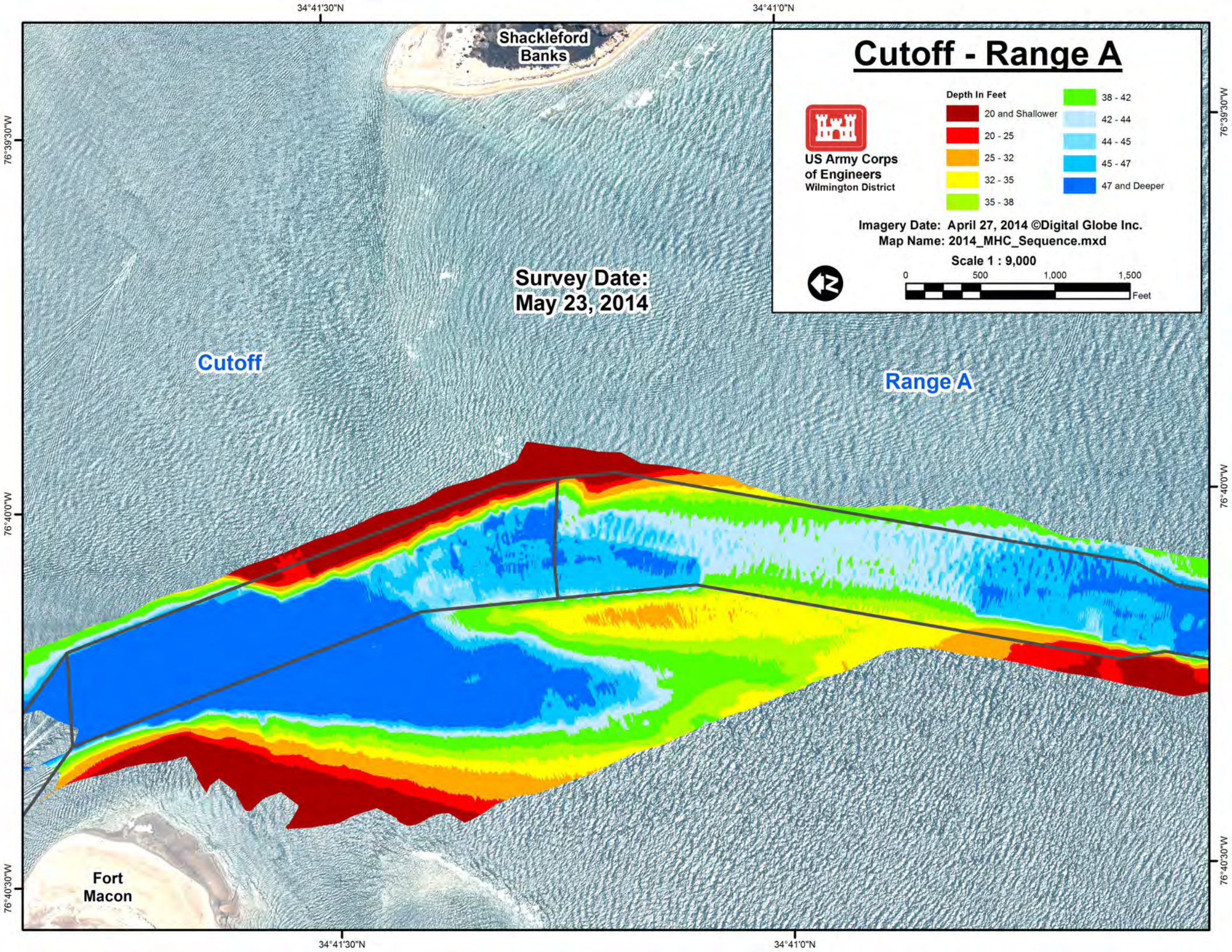
76°40'0"W

76°40'0"W

76°40'30"W

76°40'30"W





Shackleford  
Banks

# Cutoff - Range A



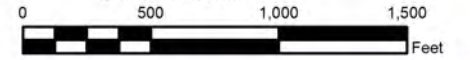
US Army Corps  
of Engineers  
Wilmington District

Depth In Feet

20 and Shallower	38 - 42
20 - 25	42 - 44
25 - 32	44 - 45
32 - 35	45 - 47
35 - 38	47 and Deeper

Imagery Date: April 27, 2014 ©Digital Globe Inc.  
Map Name: 2014\_MHC\_Sequence.mxd

Scale 1 : 9,000



Survey Date:  
May 23, 2014

Cutoff

Range A

Fort  
Macon

34°41'30"N

34°41'0"N

76°39'30"W

76°40'0"W

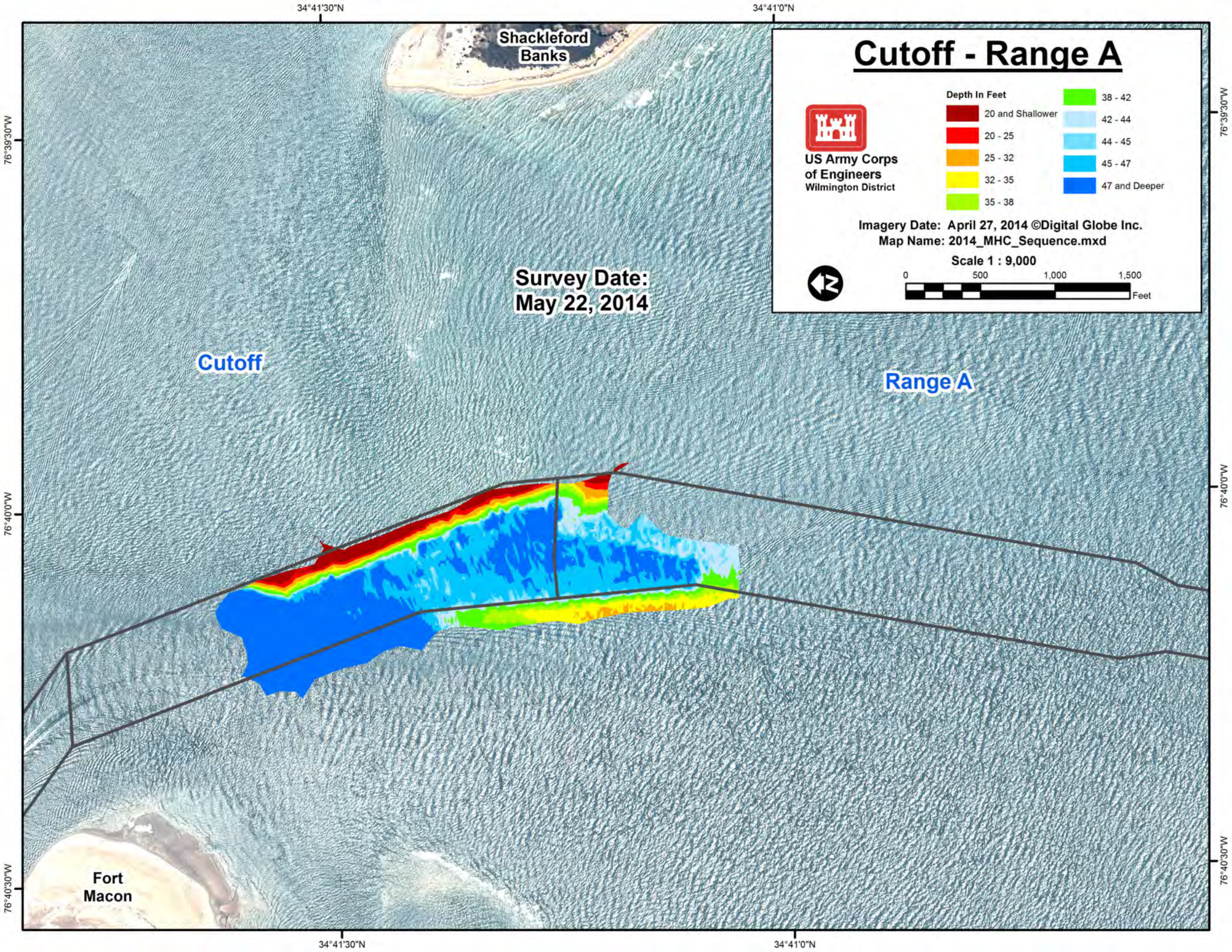
76°40'30"W

76°39'30"W

76°40'0"W

76°40'30"W





Shackleford Banks

# Cutoff - Range A

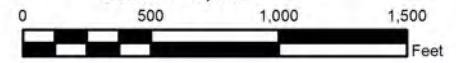


US Army Corps of Engineers  
Wilmington District

Depth In Feet	
20 and Shallower	38 - 42
20 - 25	42 - 44
25 - 32	44 - 45
32 - 35	45 - 47
35 - 38	47 and Deeper

Imagery Date: April 27, 2014 ©Digital Globe Inc.  
Map Name: 2014\_MHC\_Sequence.mxd

Scale 1 : 9,000



Survey Date:  
May 22, 2014

Cutoff

Range A

Fort Macon

76°39'30"W

76°40'0"W

76°40'30"W

34°41'30"N

34°41'0"N

34°41'30"N

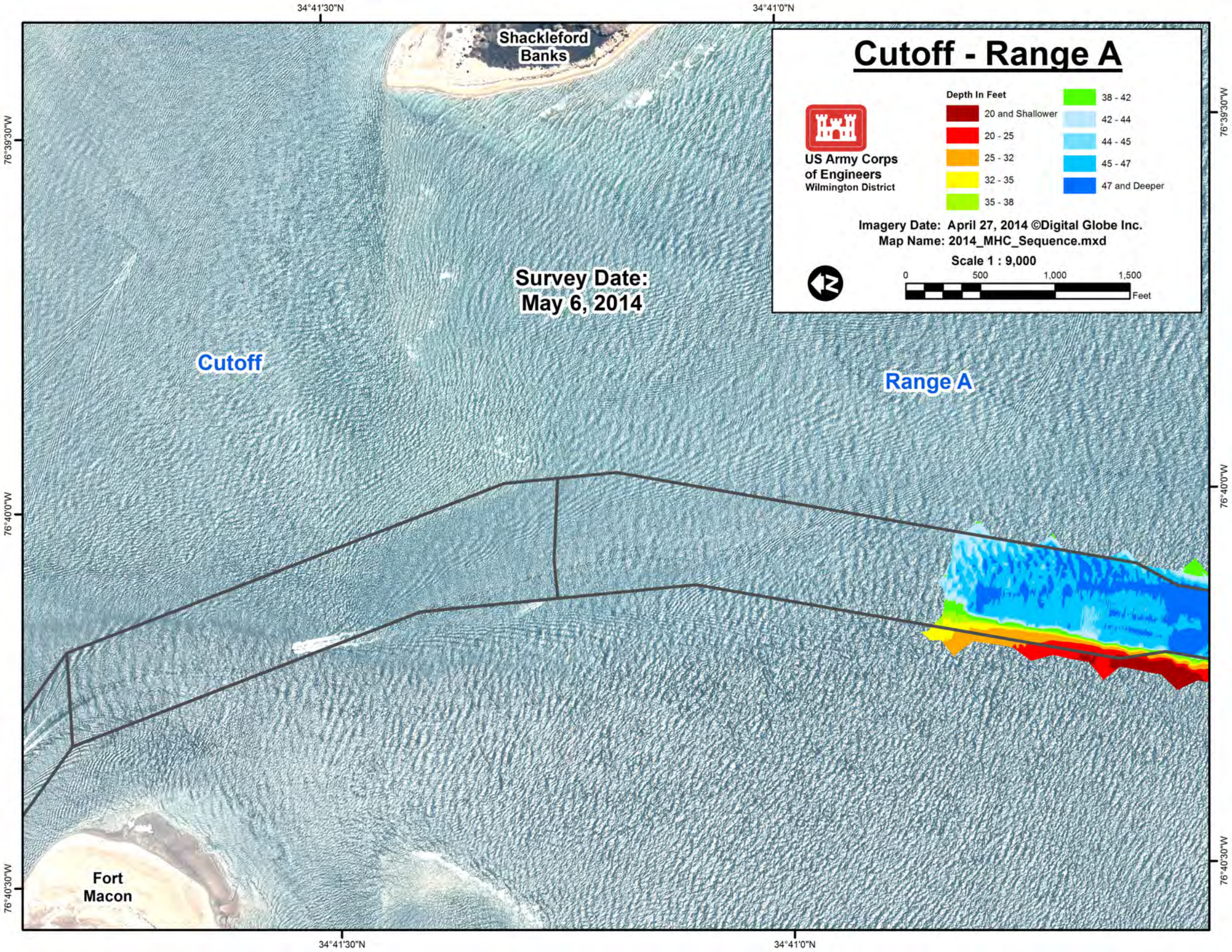
34°41'0"N

76°39'30"W

76°40'0"W

76°40'30"W





Shackleford Banks

# Cutoff - Range A

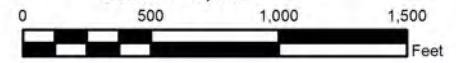


US Army Corps of Engineers  
Wilmington District

Depth In Feet	
20 and Shallower	38 - 42
20 - 25	42 - 44
25 - 32	44 - 45
32 - 35	45 - 47
35 - 38	47 and Deeper

Imagery Date: April 27, 2014 ©Digital Globe Inc.  
Map Name: 2014\_MHC\_Sequence.mxd

Scale 1 : 9,000



Survey Date:  
May 6, 2014

Cutoff

Range A

Fort Macon

76°39'30"W

76°40'0"W

76°40'30"W

34°41'30"N

34°41'0"N

34°41'30"N

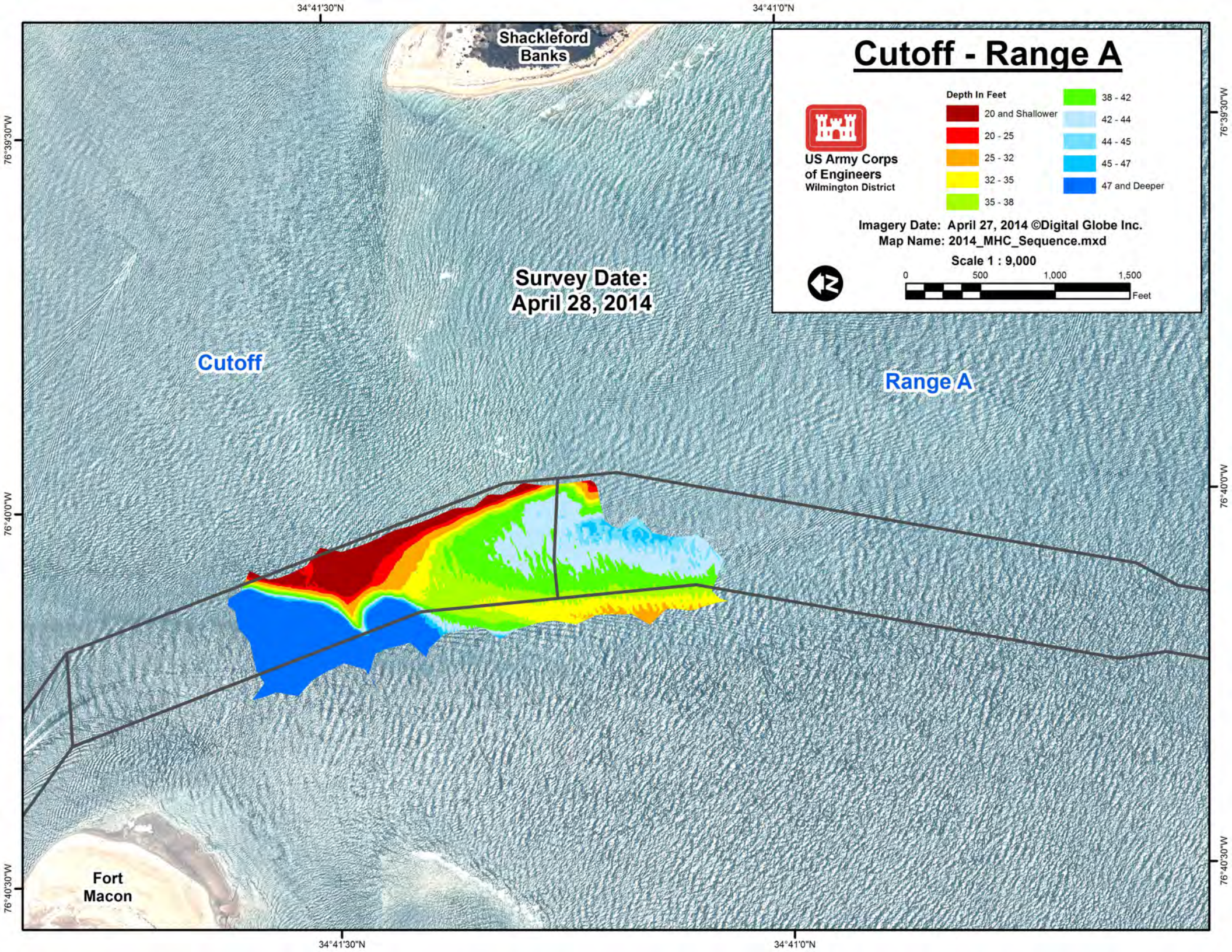
34°41'0"N

76°39'30"W

76°40'0"W

76°40'30"W





34°41'30"N 34°41'0"N

76°39'30"W

76°39'30"W

# Cutoff - Range A



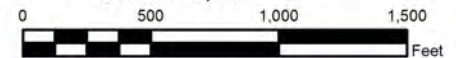
US Army Corps  
of Engineers  
Wilmington District

Depth In Feet

Dark Red	20 and Shallower	Light Blue	38 - 42
Red	20 - 25	Medium Light Blue	42 - 44
Orange	25 - 32	Light Blue	44 - 45
Yellow	32 - 35	Medium Blue	45 - 47
Light Green	35 - 38	Dark Blue	47 and Deeper

Imagery Date: April 27, 2014 ©Digital Globe Inc.  
Map Name: 2014\_MHC\_Sequence.mxd

Scale 1 : 9,000



Survey Date:  
April 28, 2014

Cutoff

Range A

76°40'0"W

76°40'0"W

Fort  
Macon

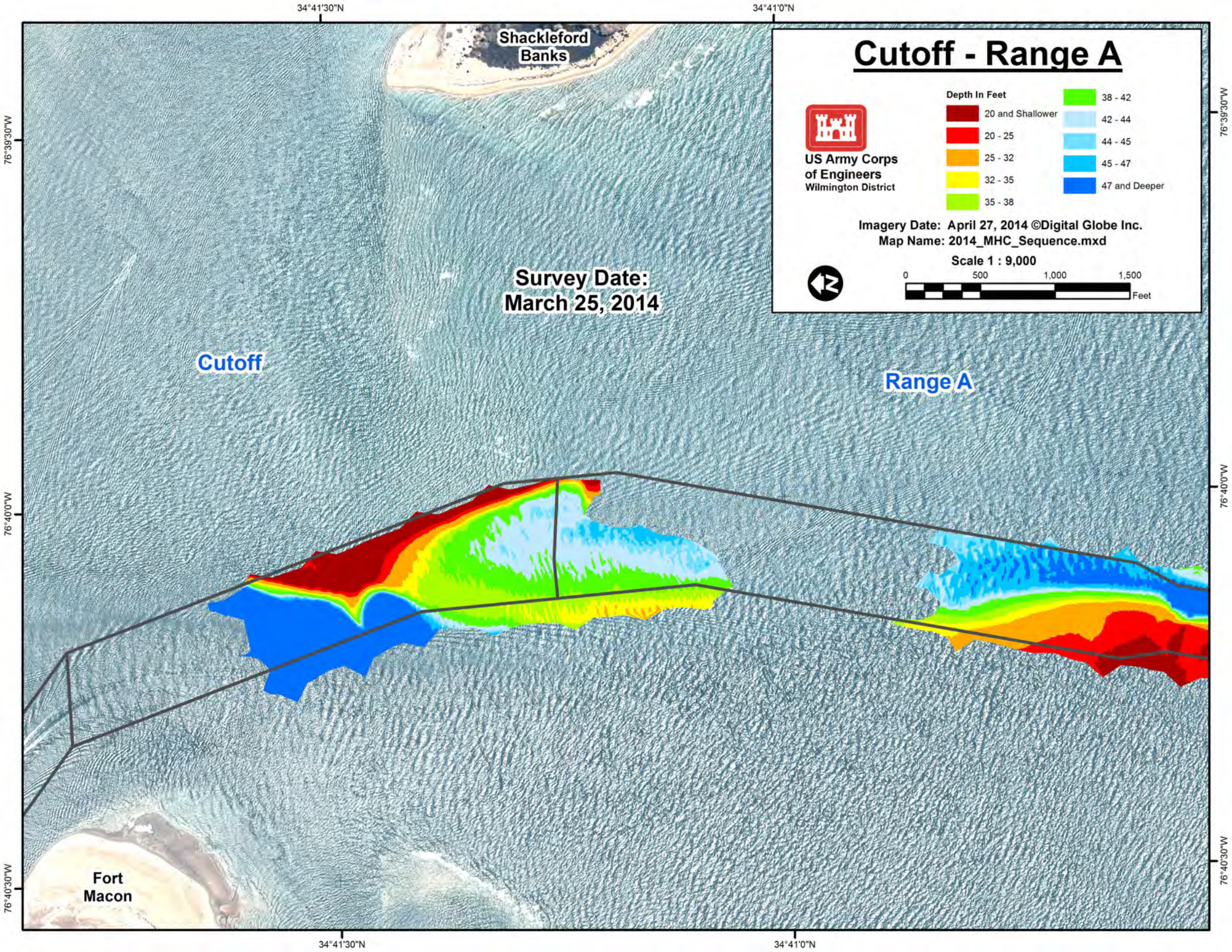
76°40'30"W

76°40'30"W

34°41'30"N

34°41'0"N





Shackleford Banks

# Cutoff - Range A

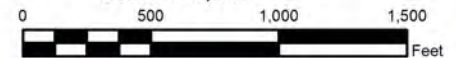


US Army Corps of Engineers  
Wilmington District

Depth In Feet	
20 and Shallower	38 - 42
20 - 25	42 - 44
25 - 32	44 - 45
32 - 35	45 - 47
35 - 38	47 and Deeper

Imagery Date: April 27, 2014 ©Digital Globe Inc.  
Map Name: 2014\_MHC\_Sequence.mxd

Scale 1 : 9,000



Survey Date:  
March 25, 2014

Cutoff

Range A

Fort Macon

34°41'30"N

34°41'0"N

76°39'30"W

76°39'30"W

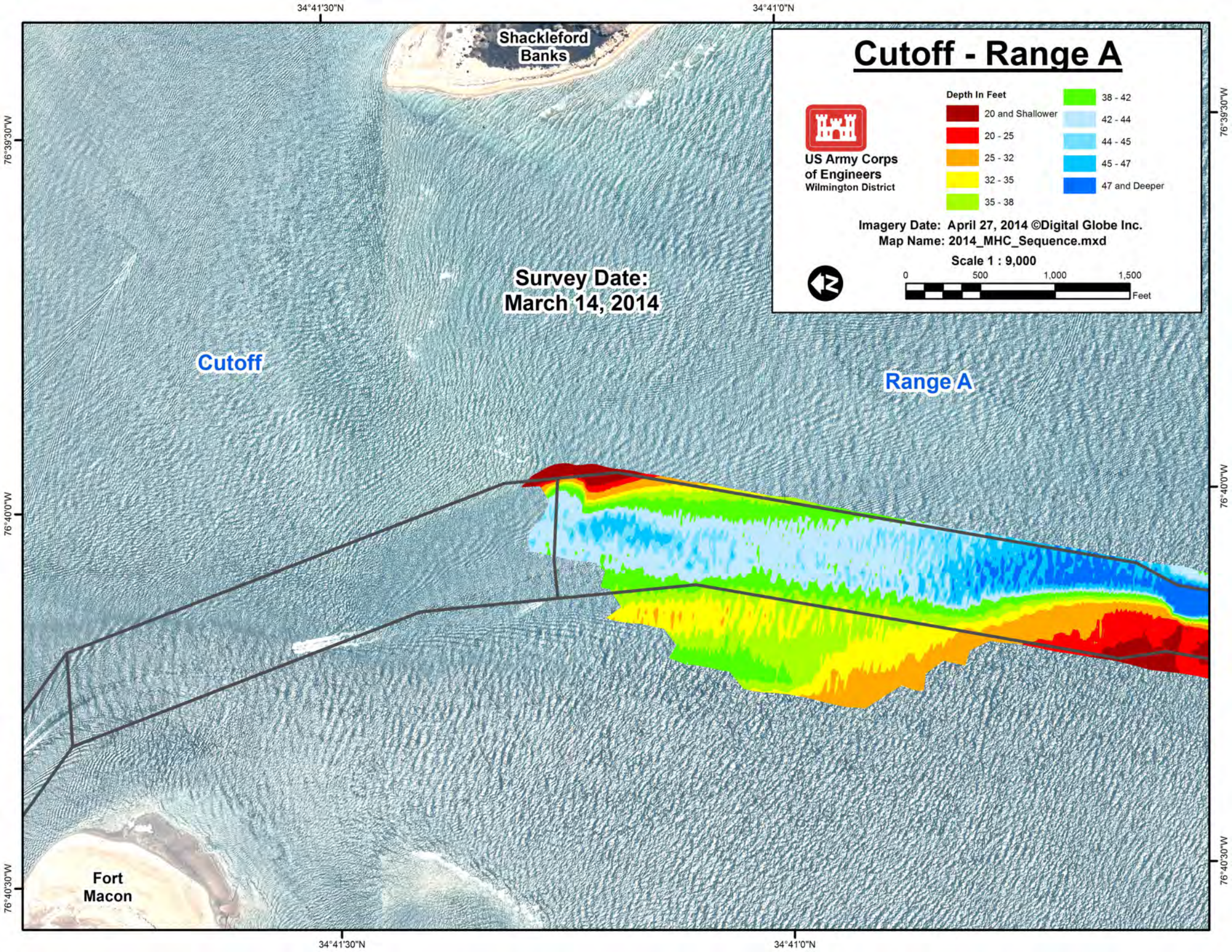
76°40'0"W

76°40'0"W

76°40'30"W

76°40'30"W





Shackleford Banks

# Cutoff - Range A

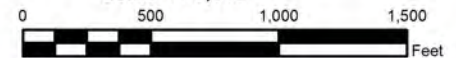


US Army Corps of Engineers  
Wilmington District

Depth In Feet	
20 and Shallower	38 - 42
20 - 25	42 - 44
25 - 32	44 - 45
32 - 35	45 - 47
35 - 38	47 and Deeper

Imagery Date: April 27, 2014 ©Digital Globe Inc.  
Map Name: 2014\_MHC\_Sequence.mxd

Scale 1 : 9,000



Survey Date:  
March 14, 2014

Cutoff

Range A

Fort Macon

76°39'30"W

76°40'0"W

76°40'30"W

34°41'30"N

34°41'0"N

34°41'30"N

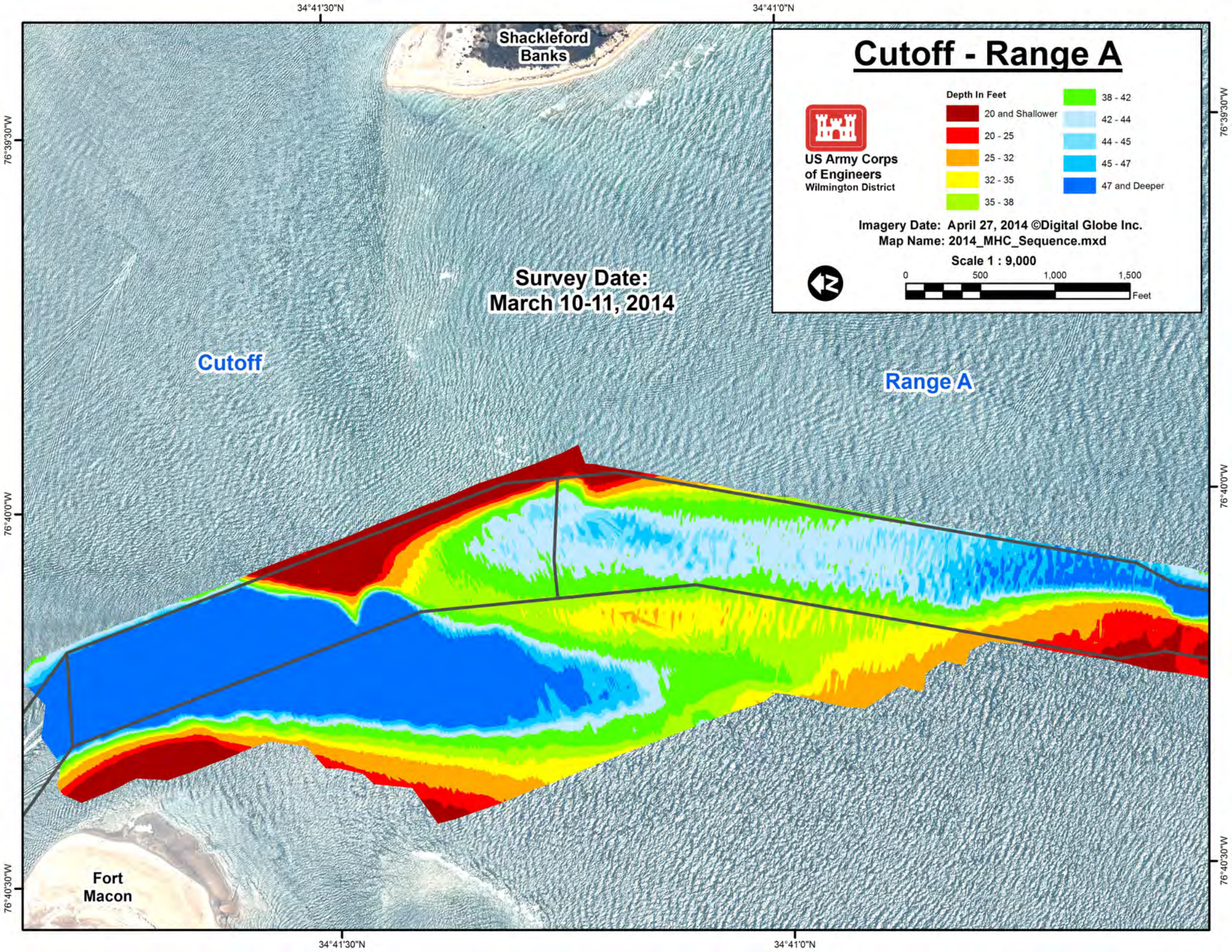
34°41'0"N

76°39'30"W

76°40'0"W

76°40'30"W





Shackleford Banks

# Cutoff - Range A

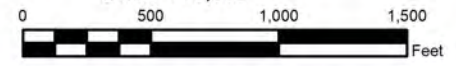


US Army Corps of Engineers  
Wilmington District

Depth In Feet	
20 and Shallower	38 - 42
20 - 25	42 - 44
25 - 32	44 - 45
32 - 35	45 - 47
35 - 38	47 and Deeper

Imagery Date: April 27, 2014 ©Digital Globe Inc.  
Map Name: 2014\_MHC\_Sequence.mxd

Scale 1 : 9,000



Survey Date:  
March 10-11, 2014

Cutoff

Range A

Fort Macon

34°41'30"N

34°41'0"N

76°39'30"W

76°39'30"W

76°40'0"W

76°40'0"W

76°40'30"W

76°40'30"W