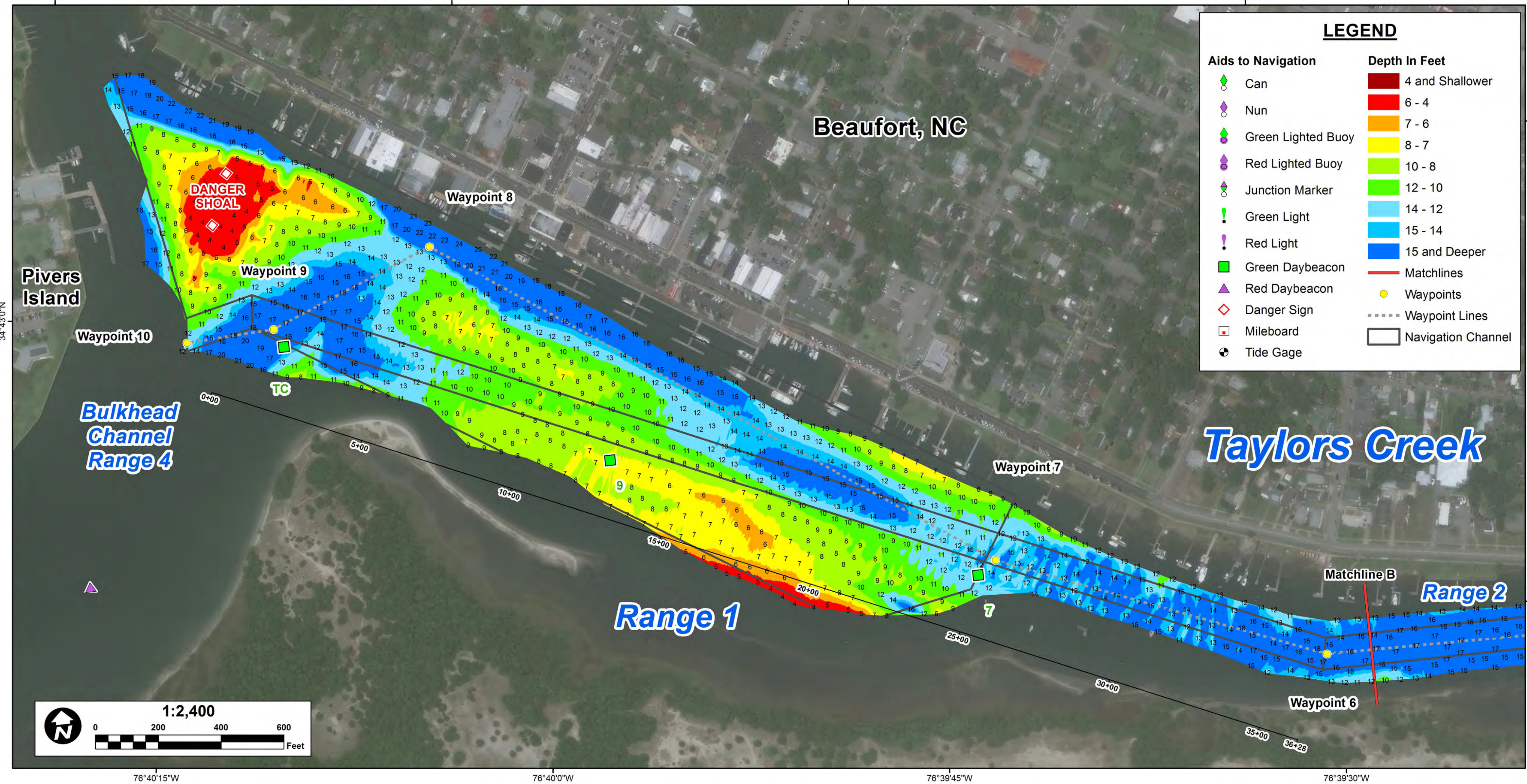
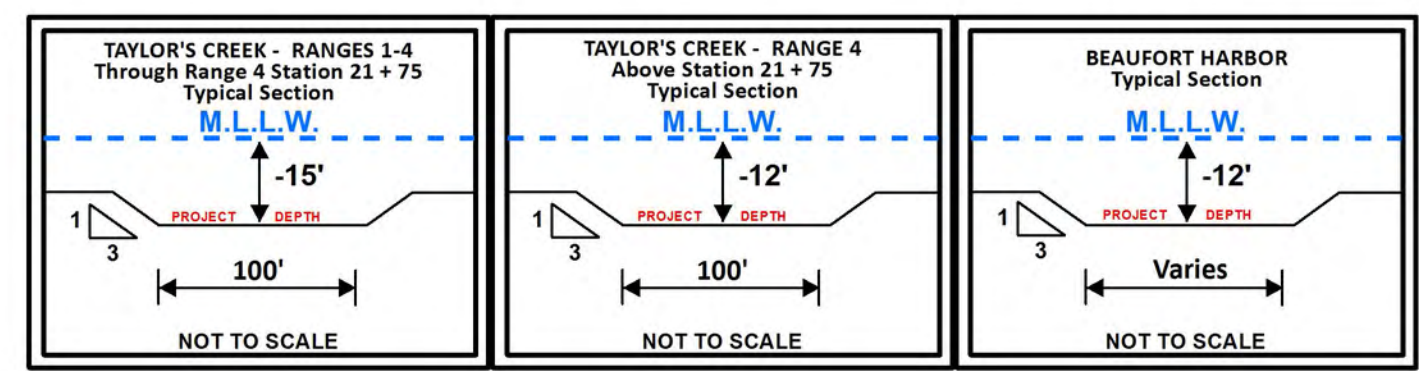


- NOTES:
- ELEVATIONS ARE IN FEET AND REFER TO NOAA'S REPORTED MEAN LOWER LOW WATER (MLLW) RELATIVE TO THE 1983-2001 TIDAL EPOCH.
 - PROJECT SURVEYED WITH DISTRICT SURVEY VESSEL "BEAUFORT", USING RTK GPS HORIZONTAL POSITIONING EQUIPMENT AND 200 KHZ SOUNDING EQUIPMENT.
 - HORIZONTAL DATUM NAD 1983. VERTICAL DATUM M.L.L.W.
 - TIDE GAGE LOCATED AT DUKE MARINE LAB. USE OF TIDE VALUES FOR THIS GAGE ARE RESTRICTED TO QUALITY ASSURANCE PURPOSES FOR VERIFICATION OF RTK TIDES. THE WILMINGTON DISTRICT WILL ONLY USE STAFF GAGE TIDE VALUES FOR FINAL MAPPING AND QUANTITY CALCULATIONS IF RTK GPS IS UNAVAILABLE AT THE TIME OF SURVEY.
 - THIS PROJECT WAS DESIGNED BY THE WILMINGTON DISTRICT OF THE U.S. ARMY CORPS OF ENGINEERS. THE INITIALS AND SIGNATURES AND REGISTRATION DESIGNATIONS OF INDIVIDUALS APPEAR ON THESE PROJECT DOCUMENTS WITHIN THE SCOPE OF THEIR EMPLOYMENT AS REQUIRED BY ER1110-1-8152.
 - THE INFORMATION DEPICTED ON THIS SURVEY MAP REPRESENTS THE RESULTS OF SURVEYS MADE ON THE DATES INDICATED AND CAN ONLY BE CONSIDERED AS INDICATING THE GENERAL CONDITIONS EXISTING AT THAT TIME. THESE CONDITIONS ARE SUBJECT TO RAPID CHANGE DUE TO SHOALING EVENTS. A PRUDENT MARINER SHOULD NOT RELY EXCLUSIVELY ON THE INFORMATION PROVIDED HERE. REQUIRED BY 33 CFR 209.325.
 - NAVIGATION AIDS LOCATED WITH DISTRICT SURVEY VESSEL, ACCURACY +/- 3 METERS.
 - FOR THE MOST UP TO DATE INFORMATION PLEASE CHECK OUR WEBSITE AT: WWW.SAW.USACE.ARMY.MIL

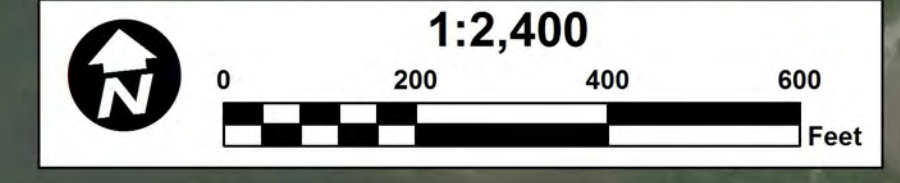
WAYPOINTS

Project	Survey Date	SPF_X	SPF_Y	DMS_X	DMS_Y
Taylors Creek - Waypoint 1	2016-08-15-16	2715904	356931	76° 37' 3.76" W	34° 42' 25.63" N
Taylors Creek - Waypoint 2	2016-08-15-16	2715423	357083	76° 37' 9.47" W	34° 42' 27.25" N
Taylors Creek - Waypoint 3	2016-08-15-16	2713002	357112	76° 37' 38.46" W	34° 42' 28.10" N
Taylors Creek - Waypoint 4	2016-08-15-16	2709676	357675	76° 38' 18.07" W	34° 42' 36.43" N
Taylors Creek - Waypoint 5	2016-08-15-16	2708424	358469	76° 38' 56.84" W	34° 42' 43.08" N
Taylors Creek - Waypoint 6	2016-08-15-16	2703640	358515	76° 39' 30.17" W	34° 42' 44.18" N
Taylors Creek - Waypoint 7	2016-08-15-16	2702623	358926	76° 39' 42.23" W	34° 42' 48.48" N
Taylors Creek - Waypoint 8	2016-08-15-16	2700939	360113	76° 40' 2.06" W	34° 43' 0.61" N
Taylors Creek - Waypoint 9	2016-08-15-16	2700418	359905	76° 40' 8.37" W	34° 42' 58.67" N
Taylors Creek - Waypoint 10	2016-08-15-16	2700139	359891	76° 40' 11.71" W	34° 42' 58.60" N

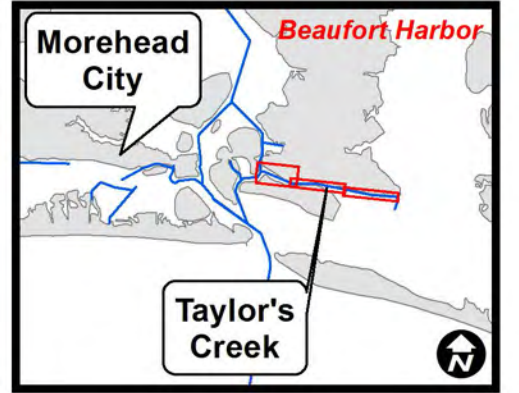
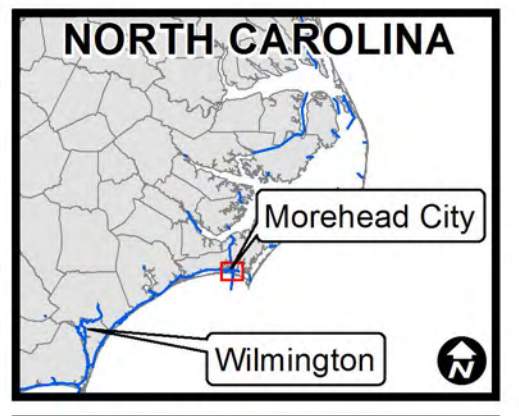


LEGEND

Aids to Navigation	Depth In Feet
Can	4 and Shallower
Nun	6 - 4
Green Lighted Buoy	7 - 6
Red Lighted Buoy	8 - 7
Junction Marker	10 - 8
Green Light	12 - 10
Red Light	14 - 12
Green Daybeacon	15 - 14
Red Daybeacon	15 and Deeper
Danger Sign	Matchlines
Mileboard	Waypoints
Tide Gage	Waypoint Lines
	Navigation Channel



US Army Corps of Engineers
Wilmington District



SURVEYED BY: CRP, JBG	SURVEY DATE: 15-16 AUGUST 2016
MAPPED: K7OPND/JM	MAP DATE: 17 AUGUST 2016
	MAP SCALE: 1:2,400
	IMAGERY DATE: 22 JULY 2016
	© 2016 DIGITALGLOBE NEXTVIEW LICENSE
	MAP FILE NAME: BH_04_TBH_20160815.MXD

HYDROGRAPHIC SURVEY
U.S. ARMY ENGINEER DISTRICT
CORPS OF ENGINEERS
WILMINGTON, NORTH CAROLINA

BEAUFORT HARBOR
TAYLOR'S CREEK
BEAUFORT, NORTH CAROLINA