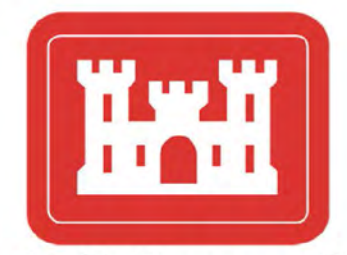


34°43'30"N

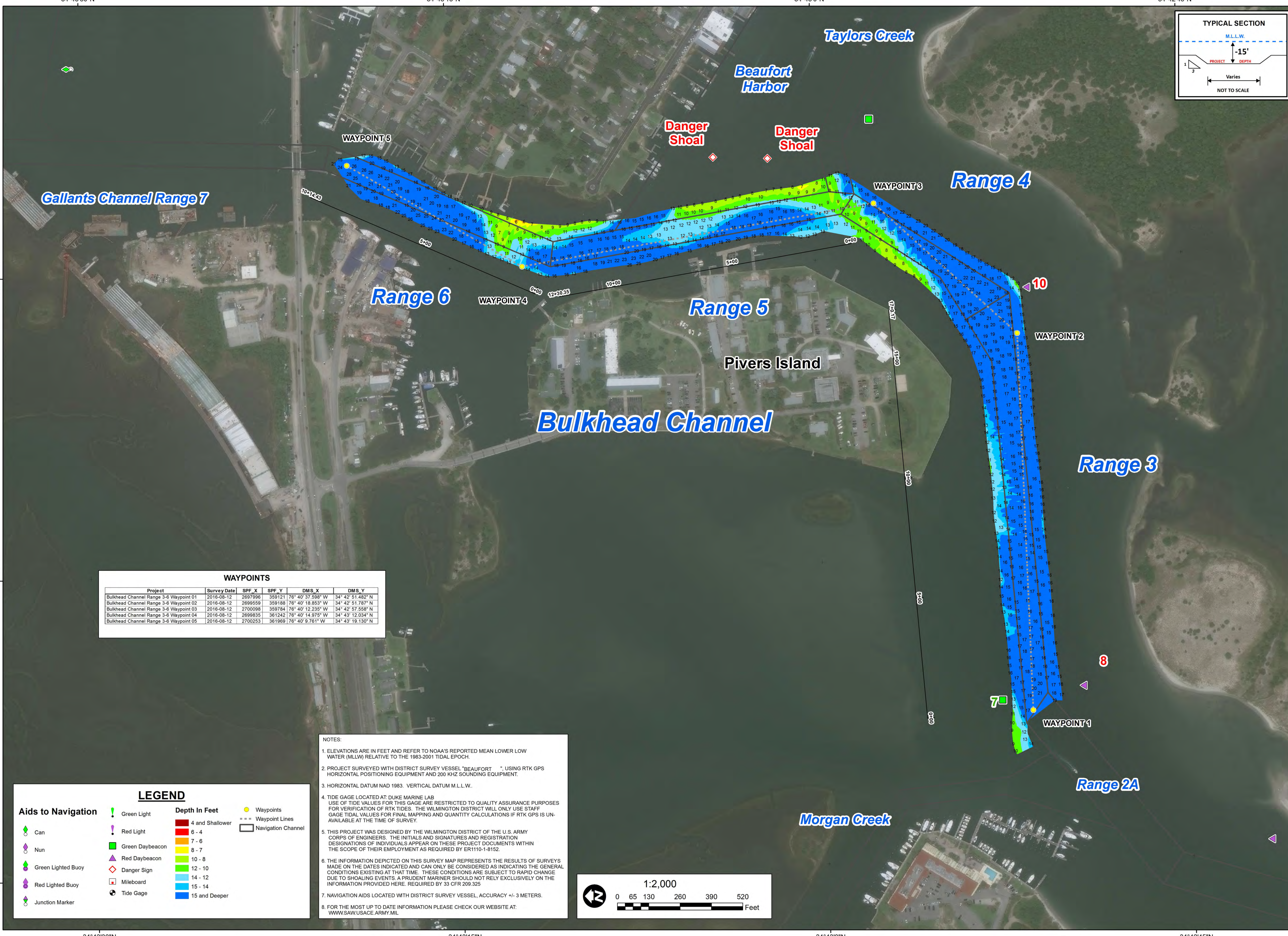
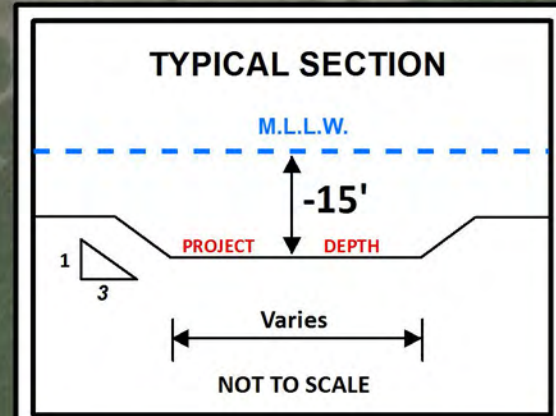
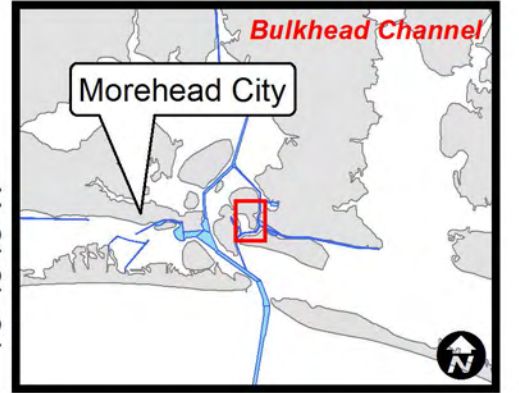
34°43'15"N

34°43'0"N

34°42'45"N



US Army Corps of Engineers
Wilmington District



WAYPOINTS

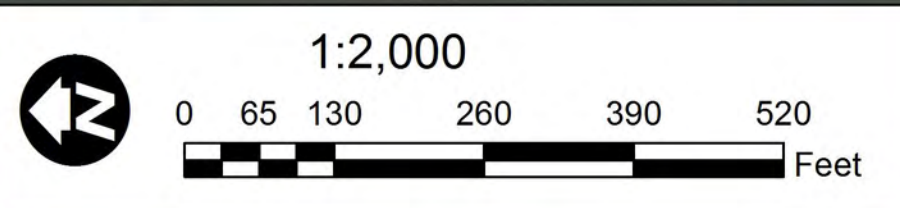
Project	Survey Date	SPF_X	SPF_Y	DMS_X	DMS_Y
Bulkhead Channel Range 3-6 Waypoint 01	2016-08-12	2697696	3591211	76° 40' 37.598" W	34° 42' 51.482" N
Bulkhead Channel Range 3-6 Waypoint 02	2016-08-12	2698559	3591888	76° 40' 18.853" W	34° 42' 51.787" N
Bulkhead Channel Range 3-6 Waypoint 03	2016-08-12	2700098	359784	76° 40' 12.235" W	34° 42' 57.558" N
Bulkhead Channel Range 3-6 Waypoint 04	2016-08-12	2699835	361242	76° 40' 14.975" W	34° 43' 12.034" N
Bulkhead Channel Range 3-6 Waypoint 05	2016-08-12	2700253	361969	76° 40' 9.761" W	34° 43' 19.130" N

NOTES:

- ELEVATIONS ARE IN FEET AND REFER TO NOAA'S REPORTED MEAN LOWER LOW WATER (MLLW) RELATIVE TO THE 1983-2001 TIDAL EPOCH.
- PROJECT SURVEYED WITH DISTRICT SURVEY VESSEL "BEAUFORT" USING RTK GPS HORIZONTAL POSITIONING EQUIPMENT AND 200 KHZ SOUNDING EQUIPMENT.
- HORIZONTAL DATUM NAD 1983. VERTICAL DATUM M.L.L.W.
- TIDE GAGE LOCATED AT DUKE MARINE LAB. USE OF TIDE VALUES FOR THIS GAGE ARE RESTRICTED TO QUALITY ASSURANCE PURPOSES FOR VERIFICATION OF RTK TIDES. THE WILMINGTON DISTRICT WILL ONLY USE STAFF GAGE TIDAL VALUES FOR FINAL MAPPING AND QUANTITY CALCULATIONS IF RTK GPS IS UNAVAILABLE AT THE TIME OF SURVEY.
- THIS PROJECT WAS DESIGNED BY THE WILMINGTON DISTRICT OF THE U.S. ARMY CORPS OF ENGINEERS. THE INITIALS AND SIGNATURES AND REGISTRATION DESIGNATIONS OF INDIVIDUALS APPEAR ON THESE PROJECT DOCUMENTS WITHIN THE SCOPE OF THEIR EMPLOYMENT AS REQUIRED BY ER1110-1-8152.
- THE INFORMATION DEPICTED ON THIS SURVEY MAP REPRESENTS THE RESULTS OF SURVEYS MADE ON THE DATES INDICATED AND CAN ONLY BE CONSIDERED AS INDICATING THE GENERAL CONDITIONS EXISTING AT THAT TIME. THESE CONDITIONS ARE SUBJECT TO RAPID CHANGE DUE TO SHOALING EVENTS. A PRUDENT MARINER SHOULD NOT RELY EXCLUSIVELY ON THE INFORMATION PROVIDED HERE. REQUIRED BY 33 CFR 209.325.
- NAVIGATION AIDS LOCATED WITH DISTRICT SURVEY VESSEL. ACCURACY +/- 3 METERS.
- FOR THE MOST UP TO DATE INFORMATION PLEASE CHECK OUR WEBSITE AT: WWW.SAW.USACE.ARMY.MIL

LEGEND

Green Light	4 and Shallow	Waypoints
Red Light	6 - 4	Waypoint Lines
Green Daybeacon	7 - 6	Navigation Channel
Red Daybeacon	8 - 7	
Green Lighted Buoy	10 - 8	
Red Lighted Buoy	12 - 10	
Junction Marker	14 - 12	
	15 - 14	
	15 and Deeper	



SURVEY DATE: 12 AUGUST 2016	SURVEYED BY: CRP, JBG
MAP DATE: 15 AUGUST 2016	MAPPED: K70FNDJIM
MAP SCALE: 1:2,000	
IMAGERY DATE: 22 JULY 2016	
© 2016 DIGITALGLOBE NEXTVIEW LICENSE	MAP FILE NAME: BH_01_BH3_20160812.MXD

HYDROGRAPHIC SURVEY
U.S. ARMY ENGINEER DISTRICT
CORPS OF ENGINEERS
WILMINGTON, NORTH CAROLINA

Bulkhead Channel
Ranges 3 - 6
BEAUFORT, NORTH CAROLINA

76°40'15"W

76°40'30"W

76°40'45"W

76°40'15"W

76°40'30"W

76°40'45"W

34°43'30"N

34°43'15"N

34°43'0"N

34°42'45"N