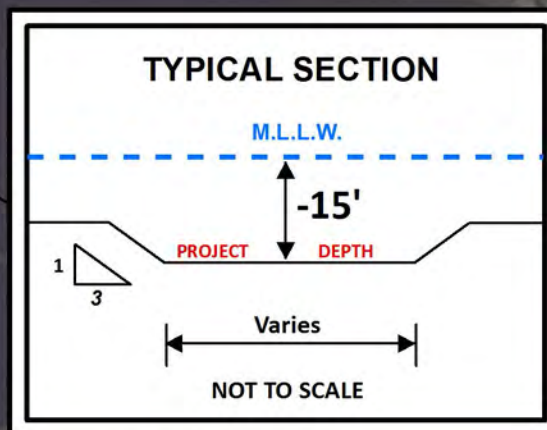
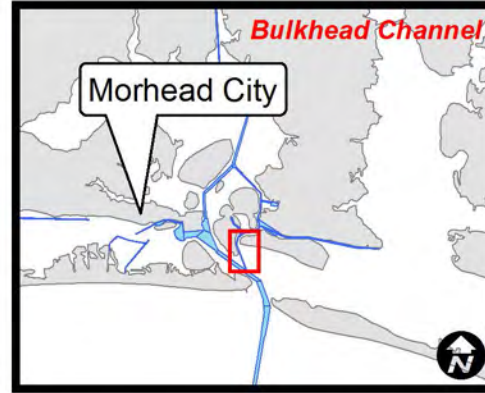


34°42'45"N 34°42'30"N 34°42'15"N



WAYPOINTS					
Project	Survey Date	SPF_X	SPF_Y	DMS_X	DMS_Y
Bulkhead Channel Range 1-2A Waypoint 01	2016-10-20	2698291	354456	76° 40' 35.365" W	34° 42' 5.279" N
Bulkhead Channel Range 1-2A Waypoint 02	2016-10-20	2697990	357658	76° 40' 48.852" W	34° 42' 37.224" N
Bulkhead Channel Range 1-2A Waypoint 03	2016-10-20	2697308	356561	76° 40' 45.986" W	34° 42' 46.105" N
Bulkhead Channel Range 1-2A Waypoint 04	2016-10-20	2697995	359121	76° 40' 37.598" W	34° 42' 51.482" N



Town Marsh

Range 3

Bulkhead Channel

Range 1

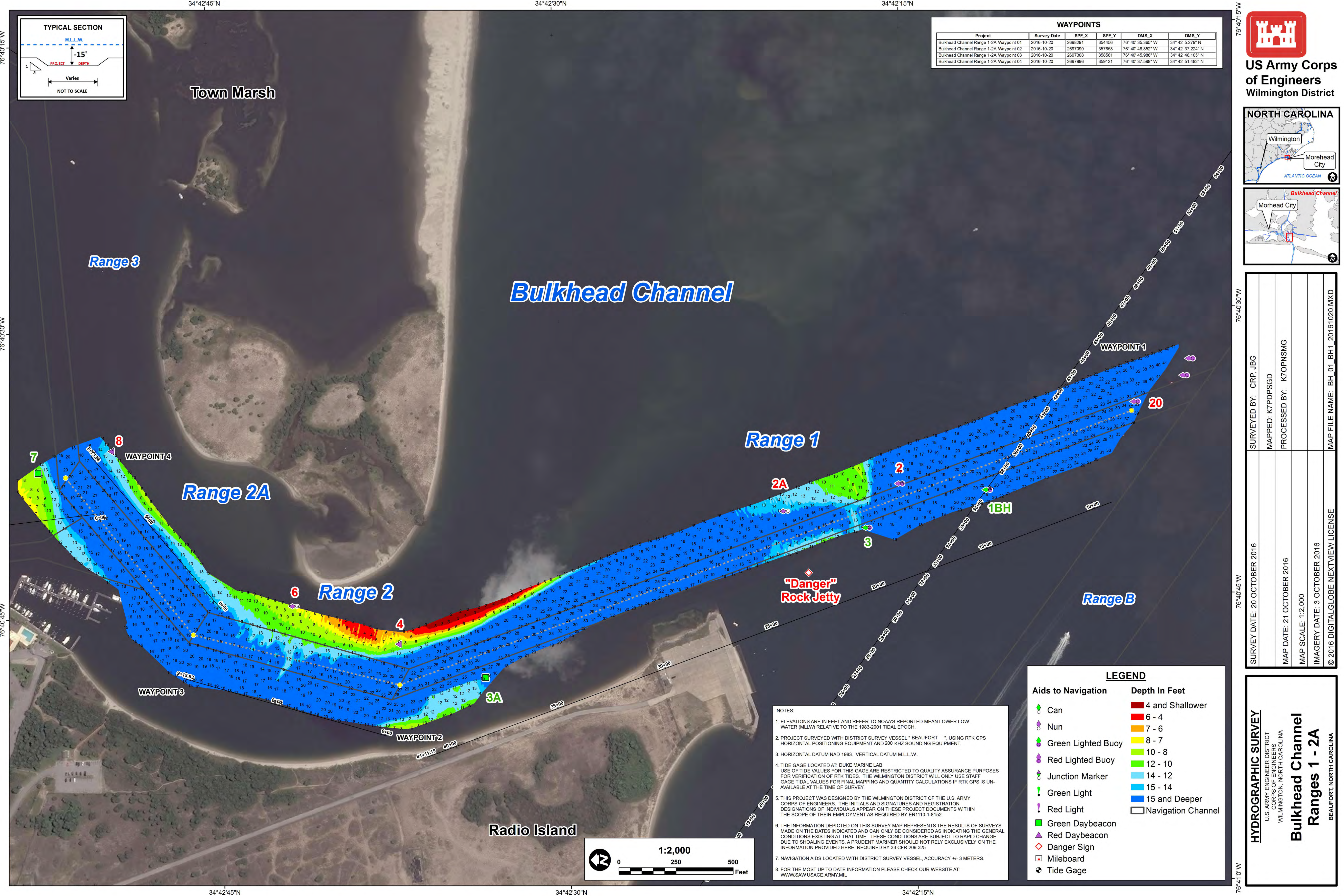
Range 2A

Range 2

"Danger" Rock Jetty

Range B

Radio Island



NOTES:

- ELEVATIONS ARE IN FEET AND REFER TO NOAA'S REPORTED MEAN LOWER LOW WATER (MLLW) RELATIVE TO THE 1983-2001 TIDAL EPOCH.
- PROJECT SURVEYED WITH DISTRICT SURVEY VESSEL "BEAUFORT", USING RTK GPS HORIZONTAL POSITIONING EQUIPMENT AND 200 KHZ SOUNDING EQUIPMENT.
- HORIZONTAL DATUM NAD 1983. VERTICAL DATUM M.L.L.W.
- TIDE GAGE LOCATED AT: DUKE MARINE LAB
USE OF TIDE VALUES FOR THIS GAGE ARE RESTRICTED TO QUALITY ASSURANCE PURPOSES FOR VERIFICATION OF RTK TIDES. THE WILMINGTON DISTRICT WILL ONLY USE STAFF GAGE TIDAL VALUES FOR FINAL MAPPING AND QUANTITY CALCULATIONS IF RTK GPS IS UNAVAILABLE AT THE TIME OF SURVEY.
- THIS PROJECT WAS DESIGNED BY THE WILMINGTON DISTRICT OF THE U.S. ARMY CORPS OF ENGINEERS. THE INITIALS AND SIGNATURES AND REGISTRATION DESIGNATIONS OF INDIVIDUALS APPEAR ON THESE PROJECT DOCUMENTS WITHIN THE SCOPE OF THEIR EMPLOYMENT AS REQUIRED BY ER1110-1-8152.
- THE INFORMATION DEPICTED ON THIS SURVEY MAP REPRESENTS THE RESULTS OF SURVEYS MADE ON THE DATES INDICATED AND CAN ONLY BE CONSIDERED AS INDICATING THE GENERAL CONDITIONS EXISTING AT THAT TIME. THESE CONDITIONS ARE SUBJECT TO RAPID CHANGE DUE TO SHOALING EVENTS. A PRUDENT MARINER SHOULD NOT RELY EXCLUSIVELY ON THE INFORMATION PROVIDED HERE. REQUIRED BY 33 CFR 209.325
- NAVIGATION AIDS LOCATED WITH DISTRICT SURVEY VESSEL, ACCURACY +/- 3 METERS.
- FOR THE MOST UP TO DATE INFORMATION PLEASE CHECK OUR WEBSITE AT: WWW.SAW.USACE.ARMY.MIL

LEGEND	
Can	4 and Shallower
Nun	6 - 4
Green Lighted Buoy	7 - 6
Red Lighted Buoy	8 - 7
Junction Marker	10 - 8
Green Light	12 - 10
Red Light	14 - 12
Green Daybeacon	15 - 14
Red Daybeacon	15 and Deeper
Danger Sign	Navigation Channel
Mileboard	
Tide Gage	

SURVEY DATE: 20 OCTOBER 2016	SURVEYED BY: CRP, JBG
MAP DATE: 21 OCTOBER 2016	MAPPED: K7PDPGSD
MAP SCALE: 1:2,000	PROCESSED BY: K7OPNSMG
IMAGERY DATE: 3 OCTOBER 2016	
© 2016 DIGITALGLOBE NEXTVIEW LICENSE	MAP FILE NAME: BH_01_20161020.MXD

HYDROGRAPHIC SURVEY

U.S. ARMY ENGINEER DISTRICT
CORPS OF ENGINEERS
WILMINGTON, NORTH CAROLINA

Bulkhead Channel
Ranges 1 - 2A

BEAUFORT, NORTH CAROLINA

76°40'15"W 76°40'30"W 76°40'45"W 76°41'00"W

34°42'45"N 34°42'30"N 34°42'15"N