

### Waypoints

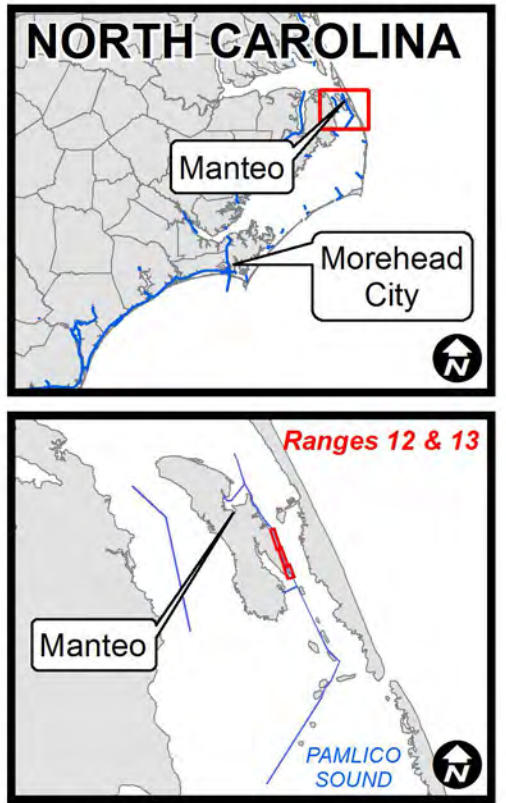
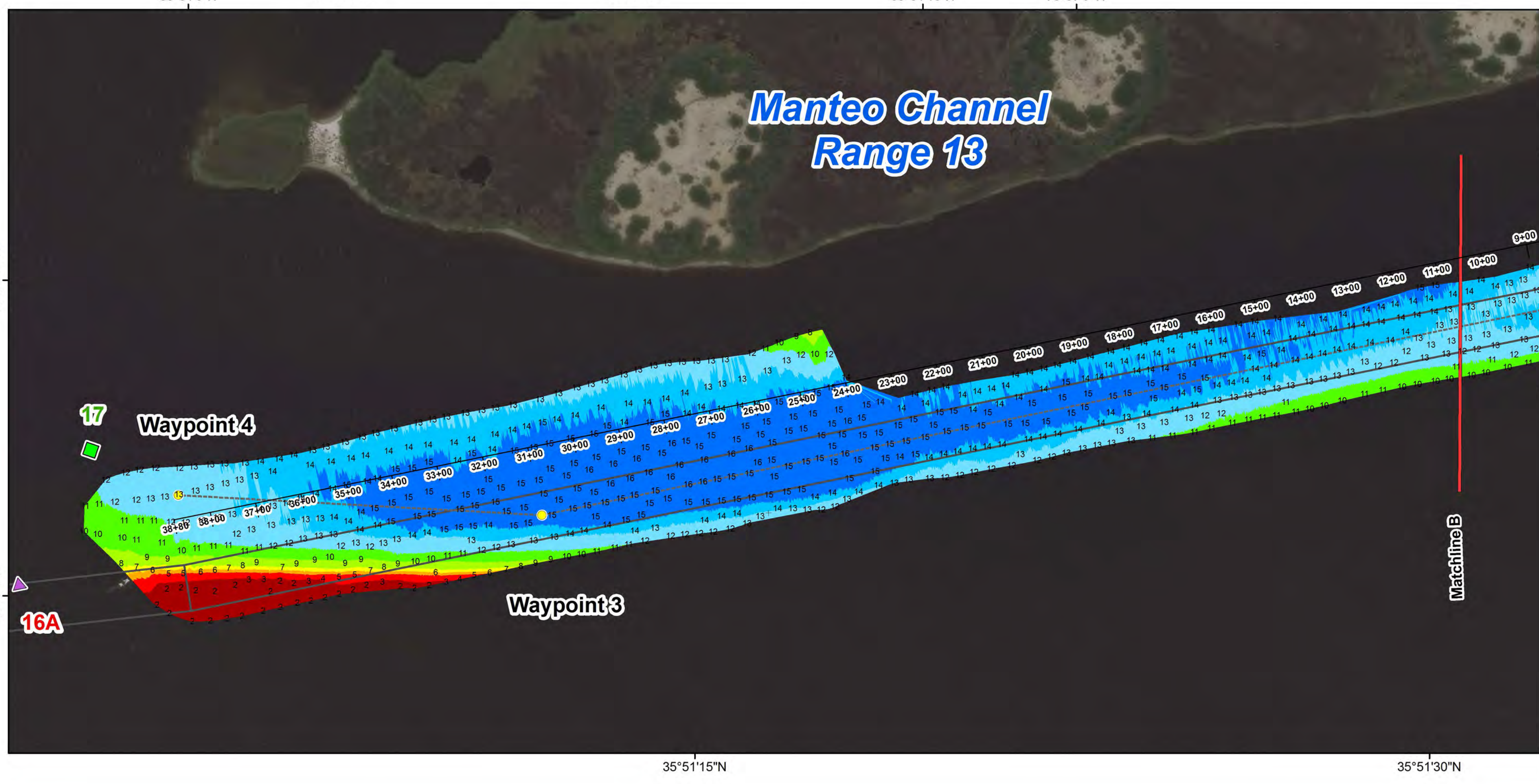
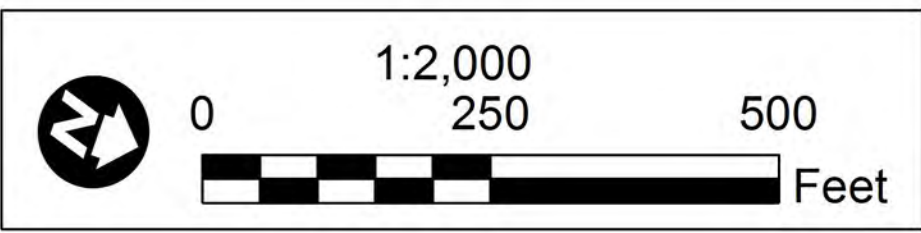
Project	Survey Date	SPF_X	SPF_Y	DMS_X	DMS_Y
Manteo Range 12 - 13 - Waypoint 01	2016-07-12	3004016	781722	75° 36' 40.912" W	35° 51' 2.844" N
Manteo Range 12 - 13 - Waypoint 02	2016-07-12	3003801	782478	75° 36' 43.205" W	35° 51' 10.391" N
Manteo Range 12 - 13 - Waypoint 03	2016-07-12	3002223	785146	75° 37' 1.265" W	35° 51' 37.284" N
Manteo Range 12 - 13 - Waypoint 04	2016-07-12	2999230	793806	75° 37' 34.034" W	35° 53' 3.900" N

### LEGEND

Aids to Navigation	Depth In Feet	Waypoints
Can	4 and Shallower	Waypoints
Nun	6 - 4	Waypoint Lines
Green Lighted Buoy	7 - 6	Matchlines
Red Lighted Buoy	8 - 7	Navigation Channel
Junction Marker	10 - 8	
	12 - 10	
	14 - 12	
	15 - 14	
	15 and Deeper	

**NOTES:**

- ELEVATIONS ARE IN FEET AND TENTHS AND REFER TO NOAA'S REPORTED MEAN LOWER LOW WATER (MLLW) RELATIVE TO THE 1983-2001 TIDAL EPOCH.
- PROJECT SURVEYED WITH DISTRICT SURVEY VESSEL "POTTER". USING RTK GPS HORIZONTAL POSITIONING EQUIPMENT AND 200 KHZ SOUNDING EQUIPMENT.
- HORIZONTAL DATUM NAD 1983. VERTICAL DATUM M.L.L.W.
- TIDE GAGE LOCATED AT DAY BEACON 5. USE OF TIDE VALUES FOR THIS GAGE ARE RESTRICTED TO QUALITY ASSURANCE PURPOSES FOR VERIFICATION OF RTK TIDES. THE WILMINGTON DISTRICT WILL ONLY USE STAFF GAGE TIDAL VALUES FOR FINAL MAPPING AND QUANTITY CALCULATIONS IF RTK GPS IS UNAVAILABLE AT THE TIME OF SURVEY.
- THIS PROJECT WAS DESIGNED BY THE WILMINGTON DISTRICT OF THE U.S. ARMY CORPS OF ENGINEERS. THE INITIALS AND SIGNATURES AND REGISTRATION DESIGNATIONS OF INDIVIDUALS APPEAR ON THESE PROJECT DOCUMENTS WITHIN THE SCOPE OF THEIR EMPLOYMENT AS REQUIRED BY ER1110-1-8152.
- THE INFORMATION DEPICTED ON THIS SURVEY MAP REPRESENTS THE RESULTS OF SURVEYS MADE ON THE DATES INDICATED AND CAN ONLY BE CONSIDERED AS INDICATING THE GENERAL CONDITIONS EXISTING AT THAT TIME. THESE CONDITIONS ARE SUBJECT TO RAPID CHANGE DUE TO SHOALING EVENTS. A PRUDENT MARINER SHOULD NOT RELY EXCLUSIVELY ON THE INFORMATION PROVIDED HERE. REQUIRED BY 33 CFR 209.325
- NAVIGATION AIDS LOCATED WITH DISTRICT SURVEY VESSEL, ACCURACY +/- 3 METERS.
- FOR THE MOST UP TO DATE INFORMATION PLEASE CHECK OUR WEBSITE AT: WWW.SAW.USACE.ARMY.MIL



SURVEYED BY: BRJ, DCH
MAPPED: KTOPNSMG
MAP FILE NAME: MN_13_R12_20160712.MXD

SURVEY DATE: 12 JULY 2016
MAP DATE: 13 JULY 2016
MAP SCALE: 1:2,000
IMAGERY DATE: 21 JUNE 2016
© 2016 DIGITALGLOBE NEXTVIEW LICENSE

**HYDROGRAPHIC SURVEY**  
 U.S. ARMY ENGINEER DISTRICT  
 CORPS OF ENGINEERS  
 WILMINGTON, NORTH CAROLINA  
**MANTEO CHANNELS  
 RANGES 12 - 13**  
 Roanoke Sound, North Carolina