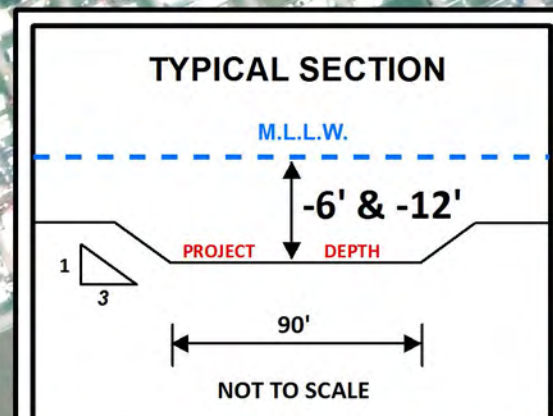
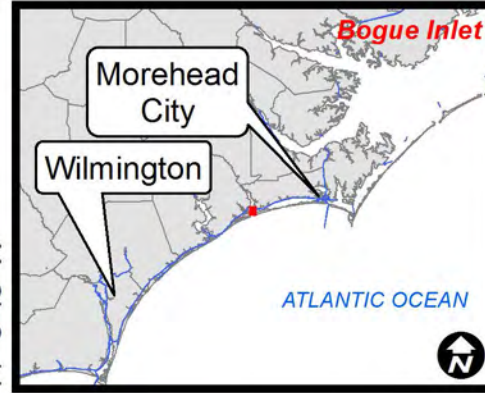


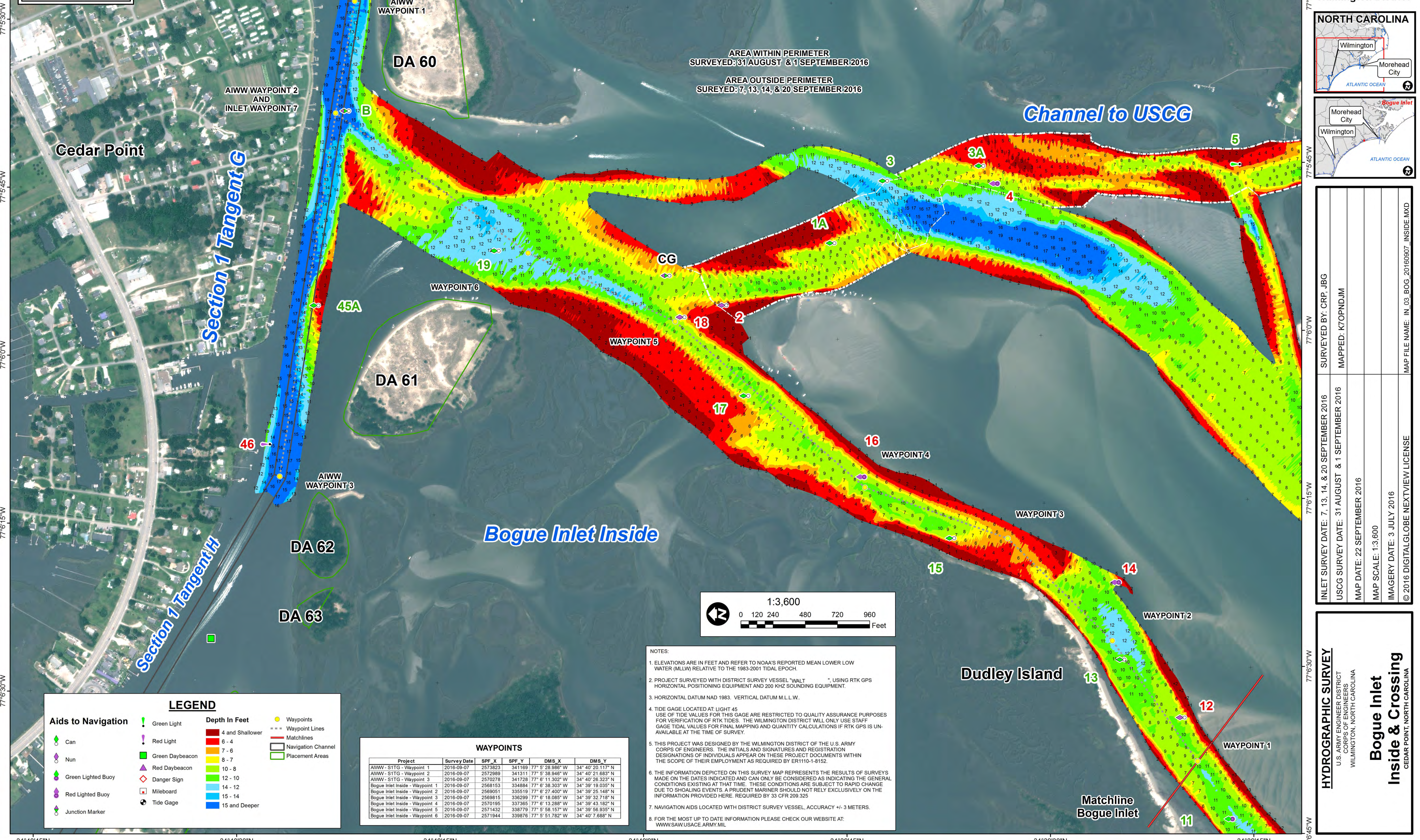
34°40'45"N 34°40'30"N 34°40'15"N 34°40'0"N 34°39'45"N 34°39'30"N 34°39'15"N



US Army Corps of Engineers
Wilmington District



AREA WITHIN PERIMETER
SURVEYED: 31 AUGUST & 1 SEPTEMBER 2016
AREA OUTSIDE PERIMETER
SUREYED: 7, 13, 14, & 20 SEPTEMBER 2016



LEGEND

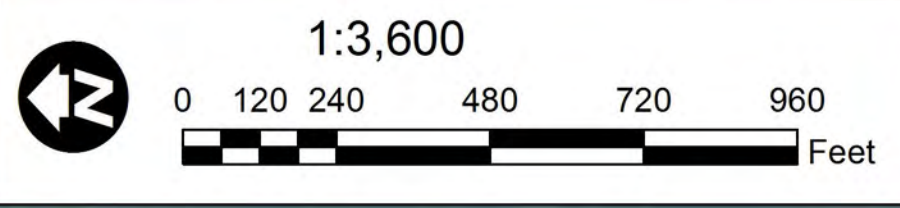
Aids to Navigation		Depth In Feet		Waypoints	
	Green Light		4 and Shallower		Waypoints
	Red Light		6 - 4		Waypoint Lines
	Green Daybeacon		7 - 6		Matchlines
	Red Daybeacon		8 - 7		Navigation Channel
	Green Lighted Buoy		10 - 8		Placement Areas
	Red Lighted Buoy		12 - 10		
	Mileboard		14 - 12		
	Tide Gage		15 - 14		
	Junction Marker		15 and Deeper		

WAYPOINTS

Project	Survey Date	SPF_X	SPF_Y	DMS_X	DMS_Y
AIWW - SITG - Waypoint 1	2016-09-07	2573823	3411169	77° 5' 28.986" W	34° 40' 20.117" N
AIWW - SITG - Waypoint 2	2016-09-07	2572989	3413111	77° 5' 38.946" W	34° 40' 21.693" N
AIWW - SITG - Waypoint 3	2016-09-07	2570278	341728	77° 6' 11.302" W	34° 40' 26.323" N
Bogue Inlet Inside - Waypoint 1	2016-09-07	2568153	334884	77° 6' 38.303" W	34° 39' 19.035" N
Bogue Inlet Inside - Waypoint 2	2016-09-07	2569051	335519	77° 6' 27.400" W	34° 39' 25.148" N
Bogue Inlet Inside - Waypoint 3	2016-09-07	2569815	336299	77° 6' 18.085" W	34° 39' 32.718" N
Bogue Inlet Inside - Waypoint 4	2016-09-07	2570195	337365	77° 6' 13.289" W	34° 39' 43.182" N
Bogue Inlet Inside - Waypoint 5	2016-09-07	2571432	338779	77° 5' 58.157" W	34° 39' 56.935" N
Bogue Inlet Inside - Waypoint 6	2016-09-07	2571944	338676	77° 5' 51.782" W	34° 40' 7.688" N

NOTES:

- ELEVATIONS ARE IN FEET AND REFER TO NOAA'S REPORTED MEAN LOWER LOW WATER (MLLW) RELATIVE TO THE 1983-2001 TIDAL EPOCH.
- PROJECT SURVEYED WITH DISTRICT SURVEY VESSEL "WALT" USING RTK GPS HORIZONTAL POSITIONING EQUIPMENT AND 200 KHZ SOUNDING EQUIPMENT.
- HORIZONTAL DATUM NAD 1983. VERTICAL DATUM M.L.L.W.
- TIDE GAGE LOCATED AT LIGHT 45. USE OF TIDE VALUES FOR THIS GAGE ARE RESTRICTED TO QUALITY ASSURANCE PURPOSES FOR VERIFICATION OF RTK TIDES. THE WILMINGTON DISTRICT WILL ONLY USE STAFF GAGE TIDAL VALUES FOR FINAL MAPPING AND QUANTITY CALCULATIONS IF RTK GPS IS UNAVAILABLE AT THE TIME OF SURVEY.
- THIS PROJECT WAS DESIGNED BY THE WILMINGTON DISTRICT OF THE U.S. ARMY CORPS OF ENGINEERS. THE INITIALS AND SIGNATURES AND REGISTRATION DESIGNATIONS OF INDIVIDUALS APPEAR ON THESE PROJECT DOCUMENTS WITHIN THE SCOPE OF THEIR EMPLOYMENT AS REQUIRED BY ER1110-1-8152.
- THE INFORMATION DEPICTED ON THIS SURVEY MAP REPRESENTS THE RESULTS OF SURVEYS MADE ON THE DATES INDICATED AND CAN ONLY BE CONSIDERED AS INDICATING THE GENERAL CONDITIONS EXISTING AT THAT TIME. THESE CONDITIONS ARE SUBJECT TO RAPID CHANGE DUE TO SHOALING EVENTS. A PRUDENT MARINER SHOULD NOT RELY EXCLUSIVELY ON THE INFORMATION PROVIDED HERE. REQUIRED BY 33 CFR 209.325
- NAVIGATION AIDS LOCATED WITH DISTRICT SURVEY VESSEL. ACCURACY +/- 3 METERS.
- FOR THE MOST UP TO DATE INFORMATION PLEASE CHECK OUR WEBSITE AT: WWW.SAW.USACE.ARMY.MIL



INLET SURVEY DATE: 7, 13, 14, & 20 SEPTEMBER 2016	SURVEYED BY: CRP, JBG
USCG SURVEY DATE: 31 AUGUST & 1 SEPTEMBER 2016	MAPPED: K70PNDJIM
MAP DATE: 22 SEPTEMBER 2016	MAP SCALE: 1:3,600
IMAGERY DATE: 3 JULY 2016	MAP FILE NAME: IN_03_BOG_20160907_INSIDE.MXD

HYDROGRAPHIC SURVEY
U.S. ARMY ENGINEER DISTRICT
CORPS OF ENGINEERS
WILMINGTON, NORTH CAROLINA

**Bogue Inlet
Inside & Crossing**
CEDAR POINT, NORTH CAROLINA

34°40'45"N 34°40'30"N 34°40'15"N 34°40'0"N 34°39'45"N 34°39'30"N 34°39'15"N