



**US Army Corps
of Engineers**
St. Louis District

Mississippi River Between Missouri River and Minneapolis, Minnesota (Upper River)

Rivers and Harbors Act of 1930, as amended Public Resolution No. 10 (1932)

Project Fact Sheet

Operation and Maintenance (NAV)

Location and Description: Project area extends from the mouth of the Missouri River at St. Louis upstream to Lock and Dam 22 tail water, includes 105 miles of river and 50,000 acres of public lands. The project provides a nine-foot navigation channel via a system of locks and dams; channel maintenance; dike and revetment; dredging; environmental stewardship responsibility as well as land and water-based recreational opportunities.

- FY 2016 Allocation (\$28,993k) (baseline service level \$21,514k)
 - Operate and maintain project at an acceptable service level
 - Includes FCCE funds (\$600k) for emergency dredging following winter flooding
 - Includes re-programmed funds (\$1.6M) for emergency repairs to locks and revetments following winter flooding.
 - Flood damages to Recreational Areas, Floodplain forests, and roads (\$1.7M)
 - Lock and Dam 25 Chains and Sprockets (\$4.7M)
- FY 2017 President’s Budget \$21,968k Capability (\$108,722k; top 3 items listed)
 - Operate and maintain project at an acceptable service level (\$22,226k)
 - Lock 25 Dam Pier Rehab IDIQ Contract (\$9.5M)
 - Replace Dam Bulkheads Lock 25 (\$5M)



Flooding winter 2015 caused damages to project areas as well as shoaling in navigation channel leading to increased dredging costs



Failing gate hoist chains at Lock and Dam 25 – critical backlog repairs

VALUE TO NATION	
Tonnage (FY13)	47,679,407
Ton Miles (FY13)	3,207,675,694
Project Cost per Ton	\$0.43
FY12 Visitor Spending	\$92,585,000
FY12 Jobs Supported (Rec spending only)	3,148
Rec Area Management	36
Acres Managed	50,000

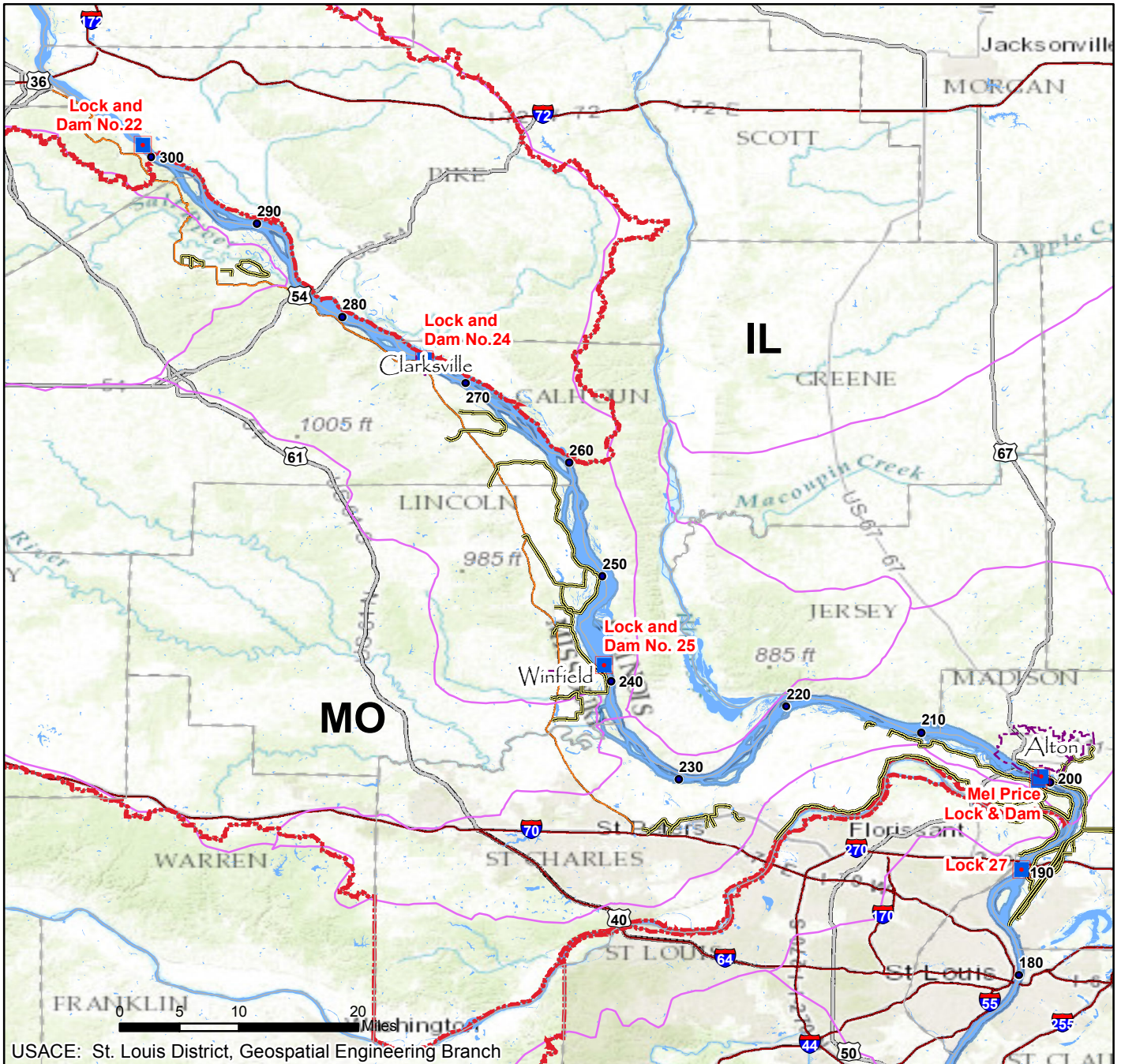
- Issues and Other Information
 - Current unfunded project backlog is \$86,754k
 - Commercial products passing through the project in FY 2013 were valued at an estimated \$17.9 billion.
 - National Great Rivers Museum hosted more than 60,000 visits and continues to show a steady increase over 10 years.

	FY12	FY13	FY14	FY15	FY16
- Federal Allocation	\$39,219k	\$24,064k	\$26,356k	\$25,264k	\$22,226k
- Supplemental	\$ 1,695k	\$ 0	\$ 0	\$ 999k	\$ 600k
- ARRA	\$ -12k	\$ 0	\$ 0	\$ 0	\$ 0
- 1% Emergency	\$ 0	\$ 0	\$ 0	\$ 9,000k	\$ 0
-Non Appropriated Contributions	\$2,500k	\$870k	\$870k	\$1,087k	\$ 1,146k*
- Total Visits	3,020k	3,020k	3,020k	3,020k	2,835k*

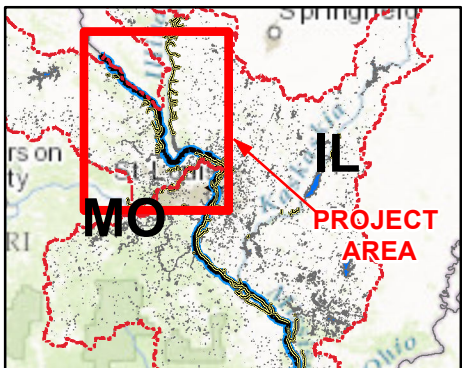
*Estimate

MISSISSIPPI RIVER BETWEEN MISSOURI RIVER & MINNEAPOLIS, MN (UPPER RIVER), IL

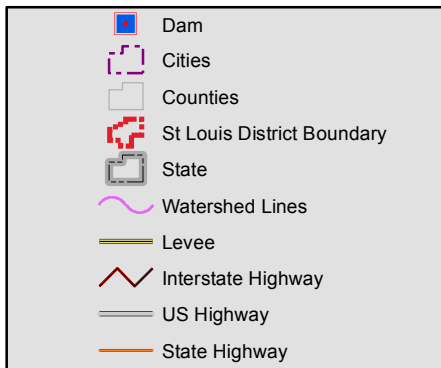
OPERATIONS & MAINTENANCE



Vicinity Map



Legend



Location in District

