



**US Army Corps
of Engineers**
St. Louis District

Project Fact Sheet

Ste. Genevieve MO

Water Resources Development Act of 1986 (Public Law 99-662)

Construction (FRM)

Location: The project is located in Ste. Genevieve County, Missouri, adjacent to the west bank of the Mississippi River between miles 121 and 125 above the confluence of the Ohio River.

Description: The project consists of a 3.5 mile long levee that provides Urban Design Flood protection from Mississippi River flooding; a gravity drain pump station facility with a 575 cubic feet per second capacity and three electric-powered pumps; a 505-acre ponding area; interior drainage ditching and grading; two closure structures; road, railroad, and utility relocations; 24 relief wells; tree screens; an environmental mitigation area; and other features. The objectives of the authorized project is accomplished with non-structural solutions to protect historic structures along North and South Gabouri Creeks and recreation facilities such as picnic areas and trails on flood control lands along the tributary improvements and the levee.

Issues: The levee protection system successfully withstood the Winter 2015 flood event.

Importance: The project protects the city of Ste. Genevieve and its nationally-recognized historic resource from Mississippi River flooding, and to reduce flash flood damages along North and South Gabouri Creeks

Risk: Loss of historical structures. The “poteaux-en-terre” structures, with their wood and earth foundations, are particularly susceptible.

Consequence: Ste Genevieve contains three of the five known remaining “poteaux-en-terre” structures in North America. Continued flooding will result in the loss of three-fifths of the nations’ inventory.



Flooding in the City of Ste. Genevieve, vicinity of the Third Street Bridge, North Gabouri (Existing Conditions), May 2009.

Activities for FY 16: Carryover funds from FY15 will be used to complete preparation of the General Reevaluation Report (GRR).

Acquisition Strategy: Not applicable

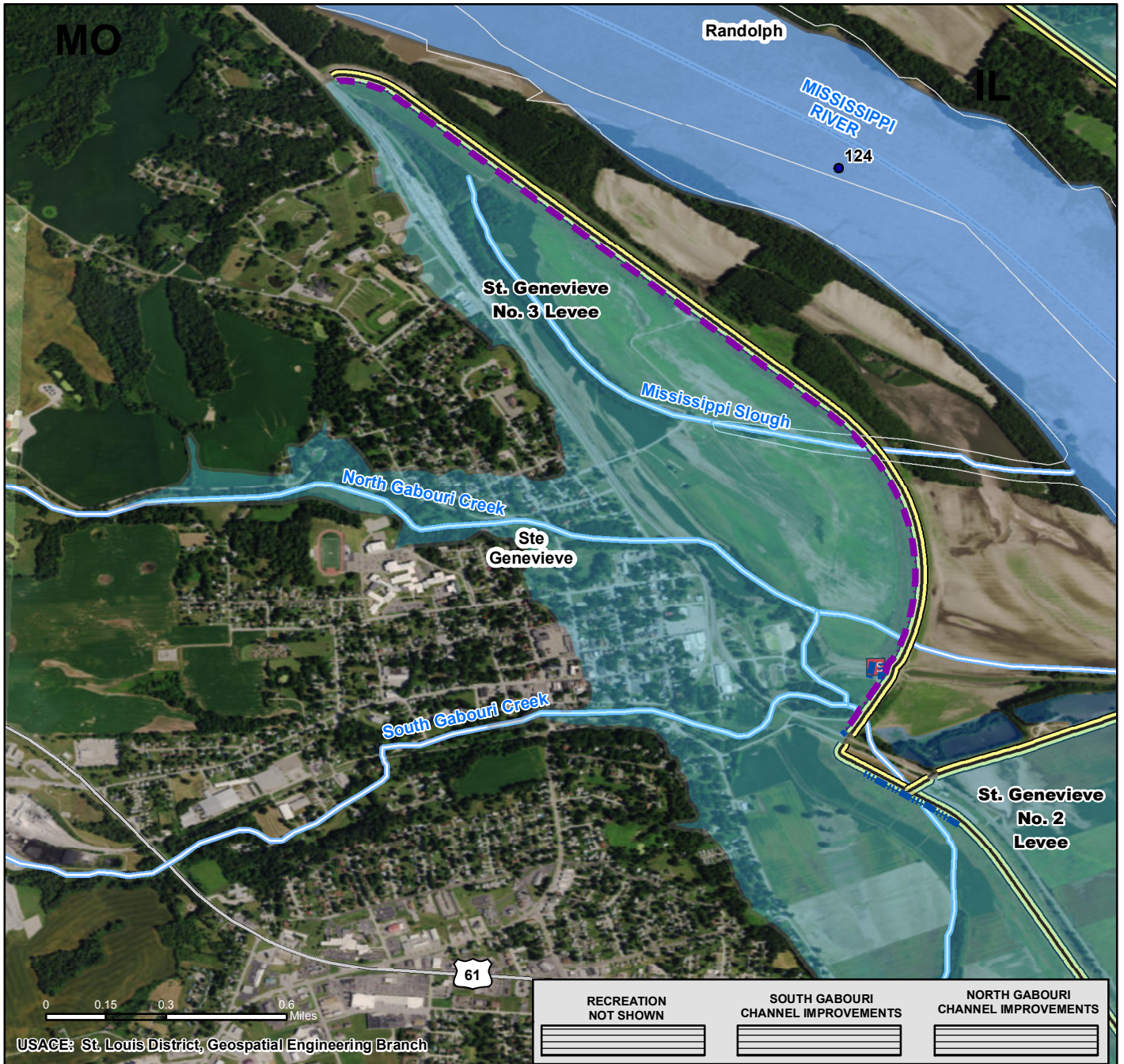
Amount That Could Be Used in FY 17: \$50,000 could be used for PPA execution and preliminary design and P&S for nonstructural flood protection measures.

Project Sponsor/Customer: The Urban Design Levee sponsor is the Ste. Genevieve Joint Levee Commission, which is composed of the city of Ste Genevieve and Ste. Genevieve County Levee Districts 2 and 3. The sponsor for the tributary and recreation facilities is expected to be the city of Ste. Genevieve.

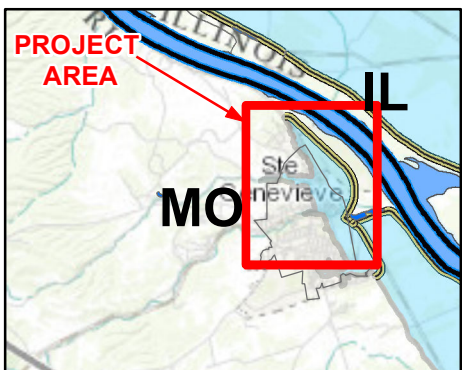
Congressional Interest: Senate: Blunt (MO) House: Jason Smith (MO-8).

Phase	FY 16 Allocation	FY 17 Budget	FY 17 Total Capability
Construction	\$0	\$0	\$50,000

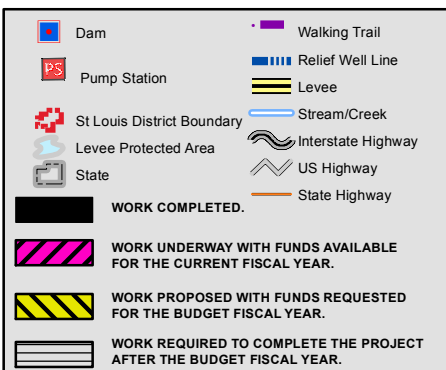
STE GENEVIEVE MISSOURI CONSTRUCTION



Vicinity Map



Legend



Location in District

