



**US Army Corps
of Engineers**
St. Louis District

Resolution of the Committee on Transportation and Infrastructure, U.S. House of Representatives, 21 June 2000.

Project Fact Sheet

St. Louis Riverfront, MO & IL

Investigations (ENR)

Location: The authorized study area is comprised of 3,011 square miles located in St. Louis City, St. Louis County, and Jefferson County in Missouri and St. Clair, Madison, and Monroe Counties in Illinois.

Description: A 2004 reconnaissance study investigated problems and opportunities for flood damage reduction, aquatic habitat restoration, and harbor safety issues in the entire project area. The study recommended proceeding with an ecosystem restoration feasibility study for the Meramec River, pending completion of a reconnaissance report addendum. This addendum was initiated in 2011 and focused on declining aquatic environment in the Meramec River Basin within St. Louis and Jefferson Counties, Missouri. The report was signed, approved, and finalized in June of 2013. The Big River is a main tributary to the Meramec and is listed as impaired with over 55 river miles adversely affected by sediment containing cadmium, lead, and zinc. The EPA is actively working on the Jefferson County Superfund Site that encompasses the entire county. EPA will be addressing the Superfund Site and the overall CERCLA compliance of the site. The USACE Feasibility Study will focus on ecosystem restoration and will investigate the downstream transport of sediments, fish passage issues, and bed and bank instabilities that threaten the few remaining mussel beds known to be strong holds for the endangered species.

Issues: EPA is working on a Remedial Investigation/Feasibility Study for the Superfund site that covers the Big River. The EPA's study will result in a Record of Decision, but the completion date is uncertain. Any recommendations resulting from the USACE feasibility study will need to be coordinated closely with EPA. Moreover, the current USACE study authority is limited to St. Louis and Jefferson Counties, while the state of Missouri and other agencies are interested in potential restoration projects throughout the watershed.

Importance: Missouri Department of Natural Resources (MDNR) has agreed to serve as a cost share sponsor for this study and signed the FCSA on August 27, 2015. In addition, the Urban Waters Federal Partnership (UWFP) has selected this project as one of eleven national waters of significance. UWFP is a campaign within the President's Great Outdoors Initiative aimed at connecting urban areas and disadvantaged individuals within these areas with waterbodies that are inaccessible due to the degraded nature. This feasibility study will identify potential aquatic ecosystem restoration projects that will contribute to the shared local, state, and Federal interest and

objectives in this watershed. Significant resources in the watershed include five federally-endangered mussel species that are listed within the Meramec and Big Rivers.

Risk: Sediments contaminated by lead, zinc, and cadmium continue to migrate down the Big River towards the lower Meramec and its confluence with the Mississippi River. These sediments, along with fish passage barriers, bank instability, and altered riparian corridor continue to pose a risk to aquatic habitat and humans.

Consequence: Impacts to the aquatic environment will continue, and in some cases increase, if no ecosystem restoration measures are identified and implemented. Some of the last remaining mussel beds of endangered species are downstream of the migrating contaminated sediment. Without the USACE feasibility study, the ecosystem will continue to be at risk as the USEPA's potential remediation will be focused on human health. The USACE ecosystem restoration mission is an essential part of the local, state, and Federal objectives in this watershed.



A mussel and Aquatic Species Survey on the Big River

Activities for FY 16: \$700,000 is being used to develop a focused array of alternatives and work towards the identification of a tentatively selected plan.

Acquisition Strategy: No contracts are scheduled to be awarded in FY 16.

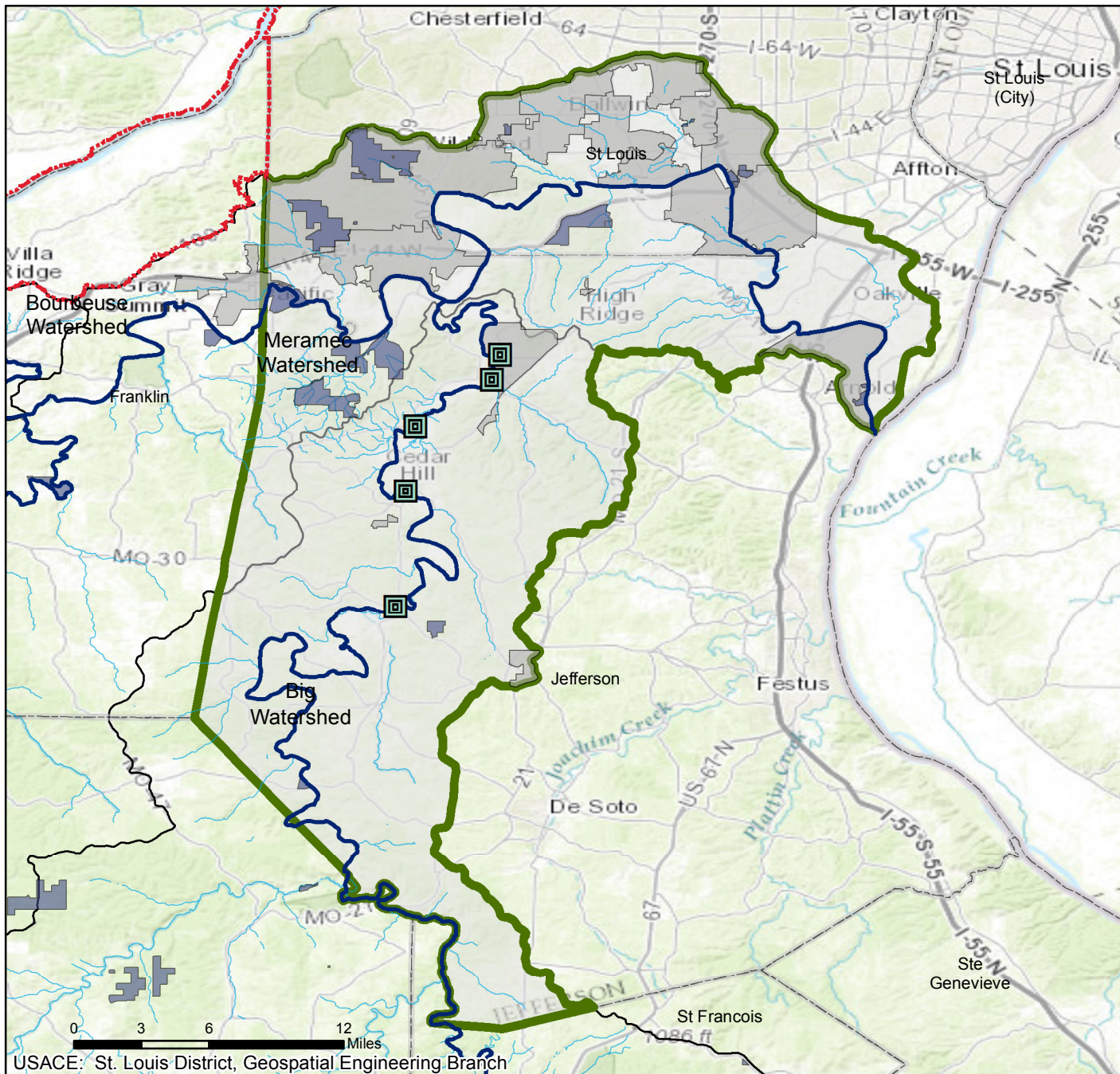
Amount That Could Be Used in FY 17: \$150,000 will be used to identify a tentatively selected plan and complete the draft report.

Project Sponsor/Customer: Missouri Department of Natural Resources (The USFWS and MDNR are co-administrators of the Natural Resource Damage Assessment account)

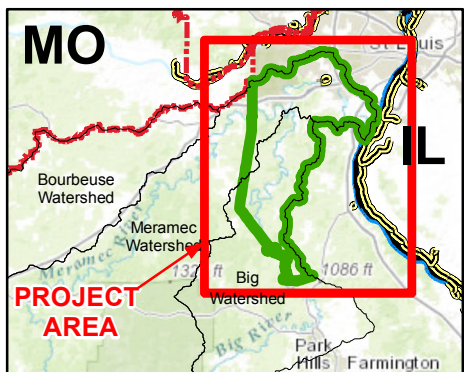
Congressional Interest: Senate: Blunt and McCaskill (MO)
House: Clay (MO-1), Wagner (MO-2), Luetkemeyer (MO-3), and Smith (MO-8)

Phase	FY 16 Allocation	FY 17 Budget	FY 17 Total Capability
Investigations	\$700,000	\$150,000	\$150,000

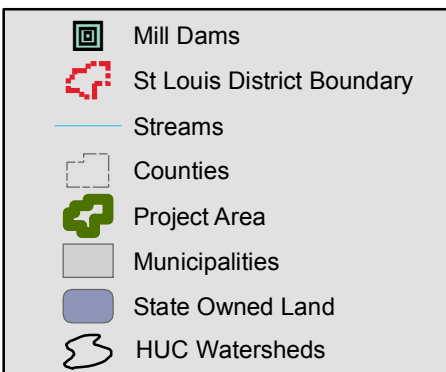
ST LOUIS RIVERFRONT, MO & IL INVESTIGATIONS



Vicinity Map



Legend



Location in District

