



**US Army Corps  
of Engineers**  
St. Louis District

Section 219(f)(32) of Water Resources Development Act (WRDA) of 1992 (Public Law (PL) 102-580) as amended by Section 502(b) of WRDA of 1999 (PL 106-53) and Section 5100 of WRDA 2007 (PL 110-114)

# Project Fact Sheet

## St. Louis, MO (Combined Sewer Overflows)

### Construction (Water Supply)

**Location:** Project authority covers combined sewer overflows within the City of St. Louis and St. Louis County, Missouri.

**Description:** The purpose of the project is to eliminate or control combined sewer overflows within the City of St. Louis and St. Louis County, Missouri. The sponsor requested five items of work: three sewer rehabilitations, one pump station alteration, and one local sewer construction.

**Issues:** Administration policy precludes budgeting for this initiative and this project was funded previously via congressional adds. Additional future work beyond capability identified herein would require increase in current authorization limit.

**Importance:** Metropolitan St. Louis Sewer District (MSD) serves a population of approximately 1.4 million people over an area of 524 square miles. MSD is responsible for operating and maintain 8,585 miles of sewer, which include 1,781 miles of combined sewers, located in residential neighborhoods, public parks and other publicly accessible locations. The replacement or rehabilitation of the combined sewers to meet stricter water quality requirements in highly urbanized areas has become a priority for MSD. MSD will implement \$4.7 Billion in needed wastewater improvements throughout its service area over the next few decades.

**Risk:** Operating, maintaining, and keeping these sewers functional are a necessity for economic development to occur and are a requirement to protect the health and safety of the public.

**Consequence:** The USEPA Region VII issued a Notice of Violation to the Metropolitan Sewer District in May 2007 which requires posting of signs by all combined sewer overflow surface discharge locations to warn the public of the potential health hazards. The EPA estimates that these sites discharge 226 million gallons of untreated sewage into receiving waters on an annual basis.



Old Mill Creek Sewer Line Repairs

**Activities for FY 16:** Funds were used to supervise completion of Task Orders (TO) 1 & 2 of Old Mill Creek (OMC) Phase 3 construction, issue TO 3 of OMC Phase 3 construction, and to finalize the cost-sharing agreement for Harlem-Baden project.

**Acquisition Strategy:** Additional TO was awarded under existing IDIQ contract.

**Amount That Could Be Used in FY 17:** Carryover funds will be used to supervise completion of TO 3 of OMC Phase 3 construction. An amount of \$12,800,000 could be used to complete TO 4 of OMC Phase 3 (\$2,000,000) and initiate and complete Harlem-Baden project, pending execution of cost-sharing agreement (\$6,000,000 for Phase 2 in three increments; \$3,000,000 for Phase 3 in two increments; \$1,800,000 for first increment of Phase 8).

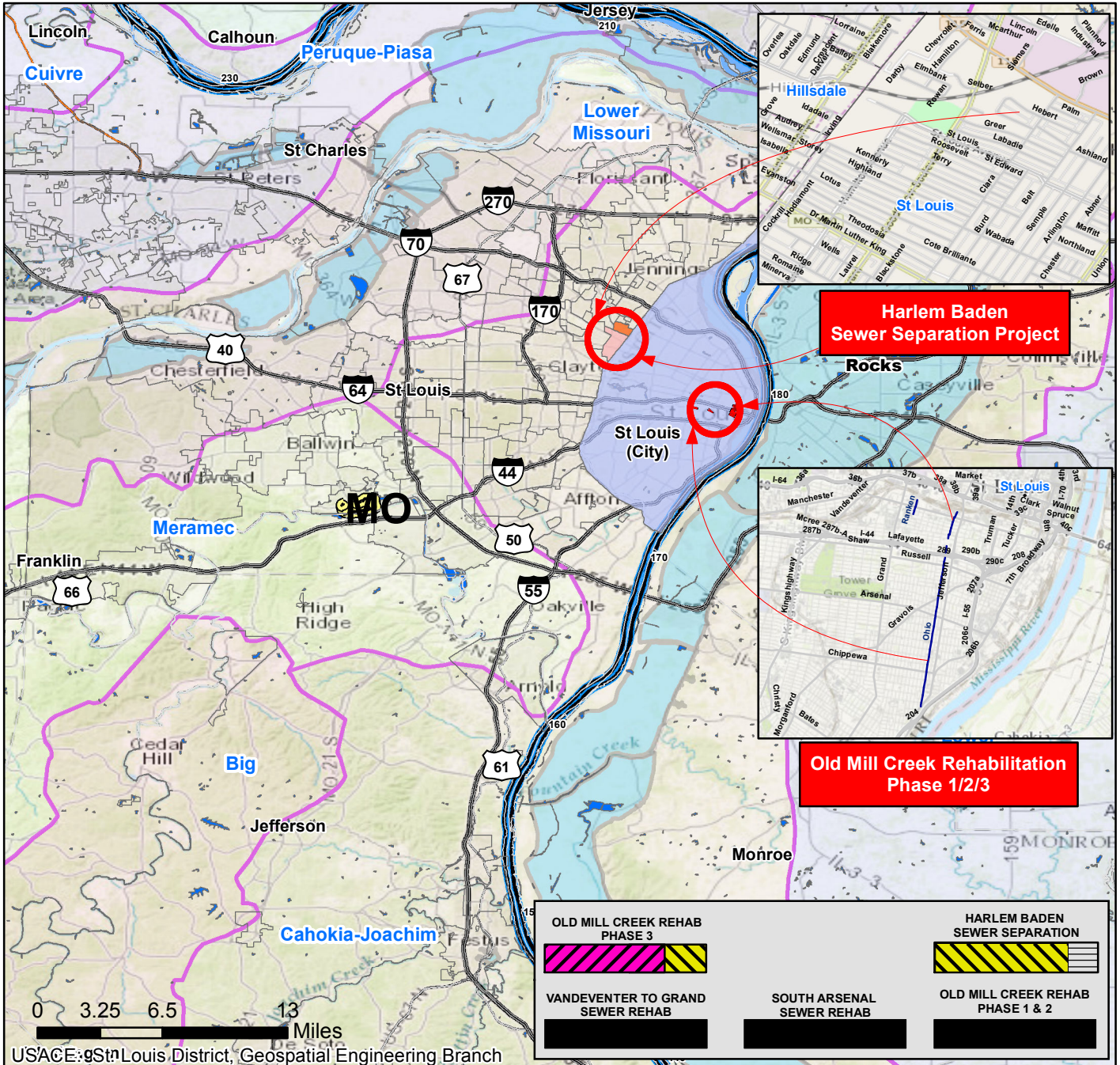
**Project Sponsor/Customer:** Metropolitan St. Louis Sewer District.

**Congressional Interest:** Senate: Blunt and McCaskill (MO); House: Clay (MO-1).

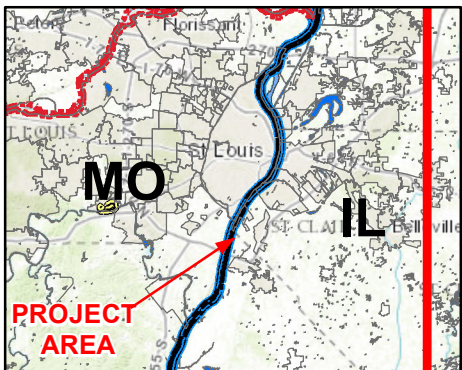
Phase	FY 16 Allocation	FY 17 Budget	FY 17 Total Capability
Construction	\$2,000,000	\$0	\$12,800,000



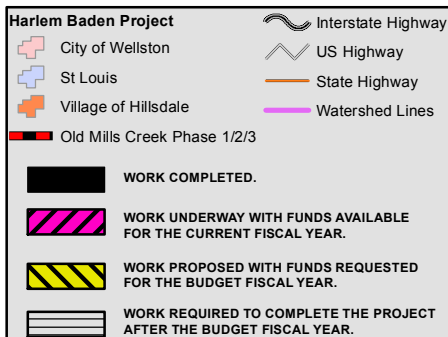
# ST LOUIS MISSOURI (COMBINED SEWER OVERFLOWS) CONSTRUCTION



## Vicinity Map



## Legend



## Location in District

