



**US Army Corps  
of Engineers**  
St. Louis District

**Prairie Du Pont Drainage and Levee District and Fish Lake Drainage and  
Levee District, IL**  
The Flood Control Act of 1936 and 1954; WRDA 2000 and 2007.

**Project Fact Sheet**

**Investigations (FRM)**

**Location:** The study area is located on the east bank of the Mississippi River between river miles 166 and 175 above the Ohio River in St. Clair and Monroe Counties, Illinois, across from St. Louis County, Missouri.

**Description:** The area is protected by an urban design levee, completed in 1951, which consists of a 15.2 mile levee system with gravity drains and four pumping stations to evacuate interior floodwaters. The flood of 1993 produced serious underseepage problems within this system (sand boils, quick soil conditions, and serious piping conditions). A deficiency correction study has been completed and recommended the construction of 130 new relief wells and grouting shut 162 existing wells, five new pump stations to accommodate the additional flow, and 28,500 linear feet of new seepage berms. The local sponsors have maintained the levee system since 1951. A feasibility study is needed to assess the potential for reconstruction of deteriorated features such as gates and culverts, thru seepage and elevation deficiencies.

**Issues:** A study to address uncontrolled underseepage under the combined Prairie du Pont/Fish Lake Levee system was completed and approved in 2012; the estimated total cost of that project is \$53.1 million. A feasibility study will address remaining reconstruction items to restore the levee system to its authorized level of protection. The sponsor, the Southwestern Illinois Flood Prevention District Council (FPD), is performing work to improve the levee to 1.0 percent chance of exceedance to attain 100-year level of protection and receive FEMA accreditation. The FPD continues to request that the Corps mandate the use of Project Labor Agreements for construction contracts in the geographic area. The Army determined that MVS solicitations will provide for voluntary submissions of a PLA under a Best Value Tradeoff acquisition strategy. Federal funding has not been appropriated for the deficiency correction project. Limited carryover funds are being used to perform the 408 observation of FPD construction activities in FY16. . The FPD has indicated their desire to provide cost share funds as Work in Kind credit and has developed a plan for designing and constructing portions of the authorized project. Pending funding, MVS will collaborate on preliminary and pre-design design activities in support of the FPD’s planned work. A WIK Memorandum of Understanding was executed 28Apr16. An Integral Determination Report (IDR) will be drafted for approval which identifies creditable work.

**Importance:** The levee system protects a population of approximately 7,100 people; a large railroad switch station and the approach to the Jefferson Barracks Bridge, a major access bridge to the metropolitan St. Louis area; and 12,890 acres of bottomland.

**Risk:** Without the design deficiency corrections project, the levee will continue to be in danger of failure due to uncontrolled underseepage during a flood event.

**Consequence:** Without the design deficiency correction project, the potential for a levee failure could result in a major catastrophe with loss of life, significant property damages, agricultural losses, and transportation delays for residents, commuters, and a rail switching station.



Closure Structure in Prairie du Pont

**Activities for FY 16:** Limited carryover funds from FY15 will be used to perform Section 408 observation of FPD construction activities.

**Acquisition Strategy:** No contracts are scheduled to be awarded in FY16.

**Amount That Could Be Used in FY 17:** \$2,310,000 could be used to determine design criteria for Sponsor design activities, complete assessment of 100 yr work, and initiate relief well designs.

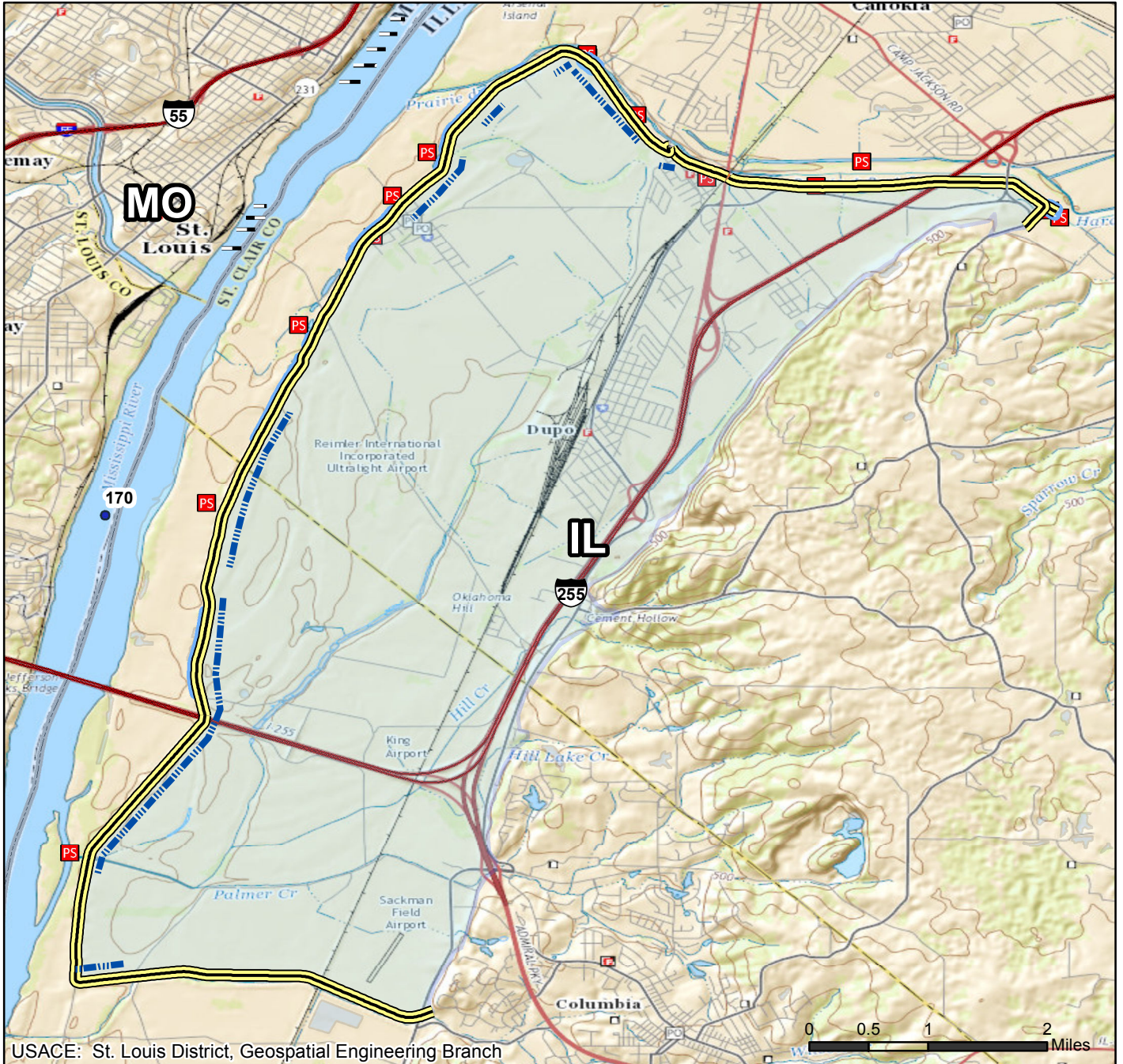
**Project Sponsor/Customer:** Prairie du Pont Drainage and Levee District, Fish Lake Drainage and Levee District and FPD

**Congressional Interest:** Senate: Durbin (IL) and Kirk (IL). House: Davis (IL-13), Bost (IL-12), and Shimkus (IL-15).

Phase	FY 16 Allocation	FY 17 Budget	FY 17 Total Capability
Investigations	\$0	\$0	\$2,310,000

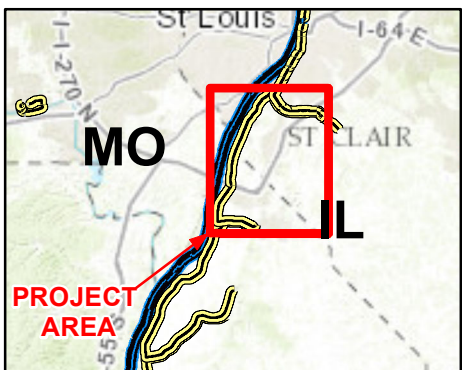


# PRAIRIE DU PONT & FISH LAKE LEVEE DISTRICT INVESTIGATIONS

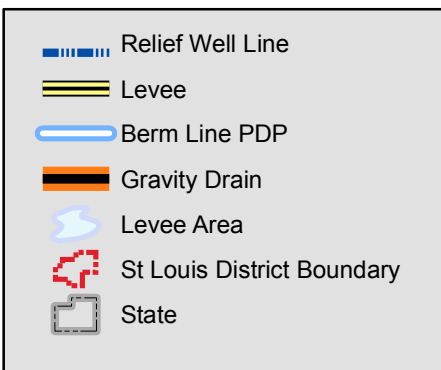


USACE: St. Louis District, Geospatial Engineering Branch

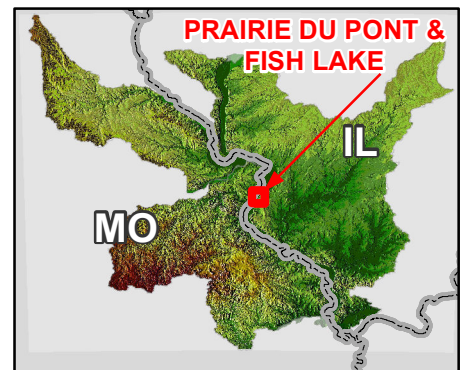
## Vicinity Map



## Legend

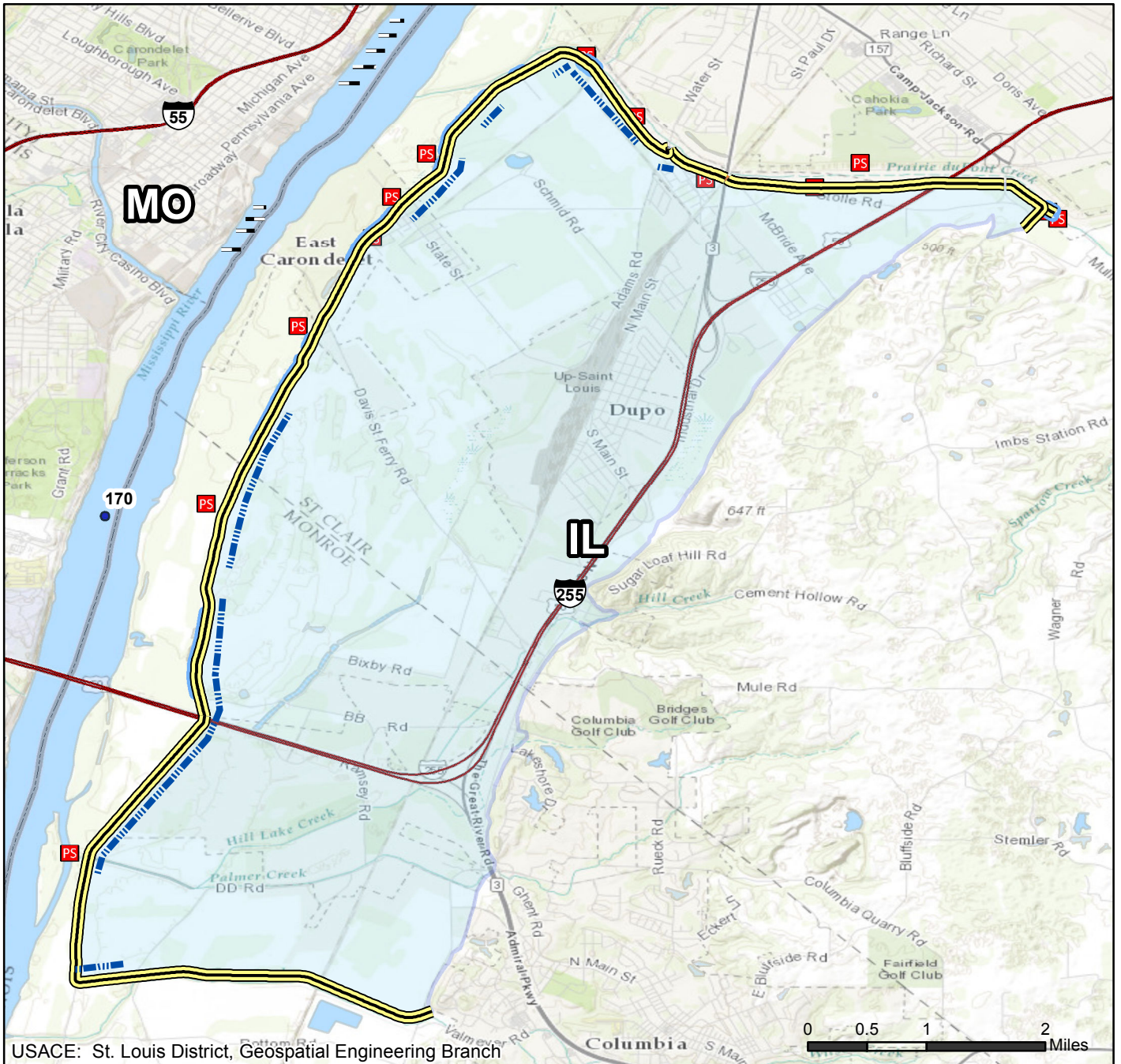


## Location in District

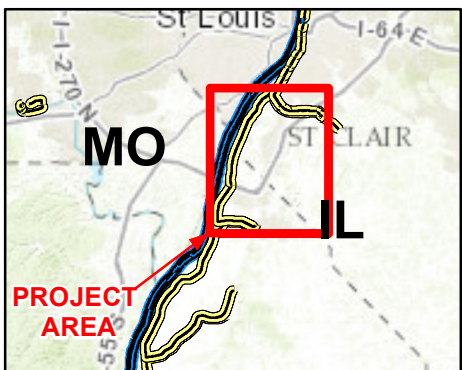




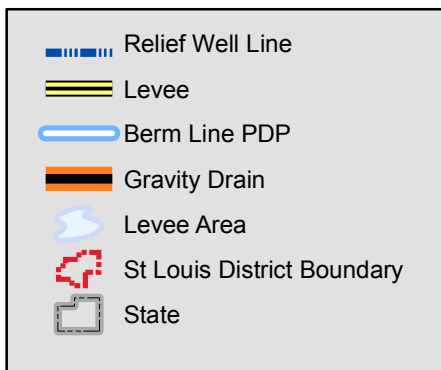
# PRAIRIE DU PONT & FISH LAKE LEVEE DISTRICT INVESTIGATIONS



Vicinity Map



Legend



Location in District

