



**US Army Corps  
of Engineers**  
St. Louis District

# Project Fact Sheet

## Clarence Cannon Dam and Mark Twain Lake, MO

The Flood Control Acts of 1938 and 1962

### Operation and Maintenance (FRM)

**Location and Description:** The project is located on the Salt River at Mile 63 above its confluence with the Mississippi River. Mark Twain Lake is located 15 miles south of Monroe City, MO, and 140 miles north of St. Louis, MO. This multi-purpose project provides flood risk management, hydropower, water supply, navigation storage, pollution abatement, fish and wildlife conservation, and recreation. It consists of 54,000 acres and has 500 campsites, 17 boat ramps, 2 marinas, 41 miles of trails, the M.W. Boudreaux Memorial Visitor Center and Mark Twain State Park.

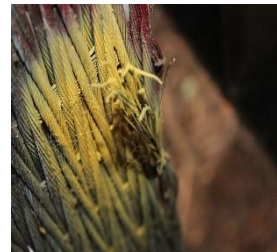
- Flood Risk Management; Hydropower; Recreation; Environmental Stewardship; Water Supply; Navigation
- FY 2016 Allocation (\$8,750k) (baseline service level \$6,351k)
  - Operate and maintain project at acceptable service level
  - Upgrade Station Service Switchgear & 480v MCC's (\$1,250k)
- FY 2017 President's Budget \$6,994k (\$41,268k capability; top 2 items listed)
  - Operate and maintain project at acceptable service level (\$6,351k)
  - Replace wire rope at Re-Regulation Dam (\$400k)
- Issues and Other Information
  - Current unfunded needs are \$34,447k
  - Dissolved Oxygen in Re-Regulation pool, working with state on long term solution
  - Southwestern Power Administration funding
    - FY-18 Excitation System Replacement (Phase II)

VALUE TO NATION	
Flood Damages Prevented (cumulative 1993-2014)	\$1.8+B
FY12 Visitor Spending	\$84,700,000
FY12 Jobs Supported	871
Rec Area Management	13 by Corps; 3 by outgrant
Acres Managed	54,741 by Corps; 486 by others
Water Supply	14 counties (72,942 people) Served
Hydroelectric Power	20,000 households

	FY12	FY13	FY14	FY15	FY16
- Federal Allocation	\$6,272k	\$6,017k	\$6,482k	\$7,293k	\$8,750k
- Supplemental	\$ 44k	\$ -3k	\$0	\$0	\$0
- ARRA	\$ 122k	\$0	\$0	\$0	\$0
- Non Appropriated Contributions	\$513k	\$644k	\$336k	\$850k	\$293k*
- Rec Fees Collected	\$505k	\$547k	\$527k	\$500k	\$490k*
- Total Visits	1,721k	2,035k	2,266k	2,100k	1,400k*

\*Estimate

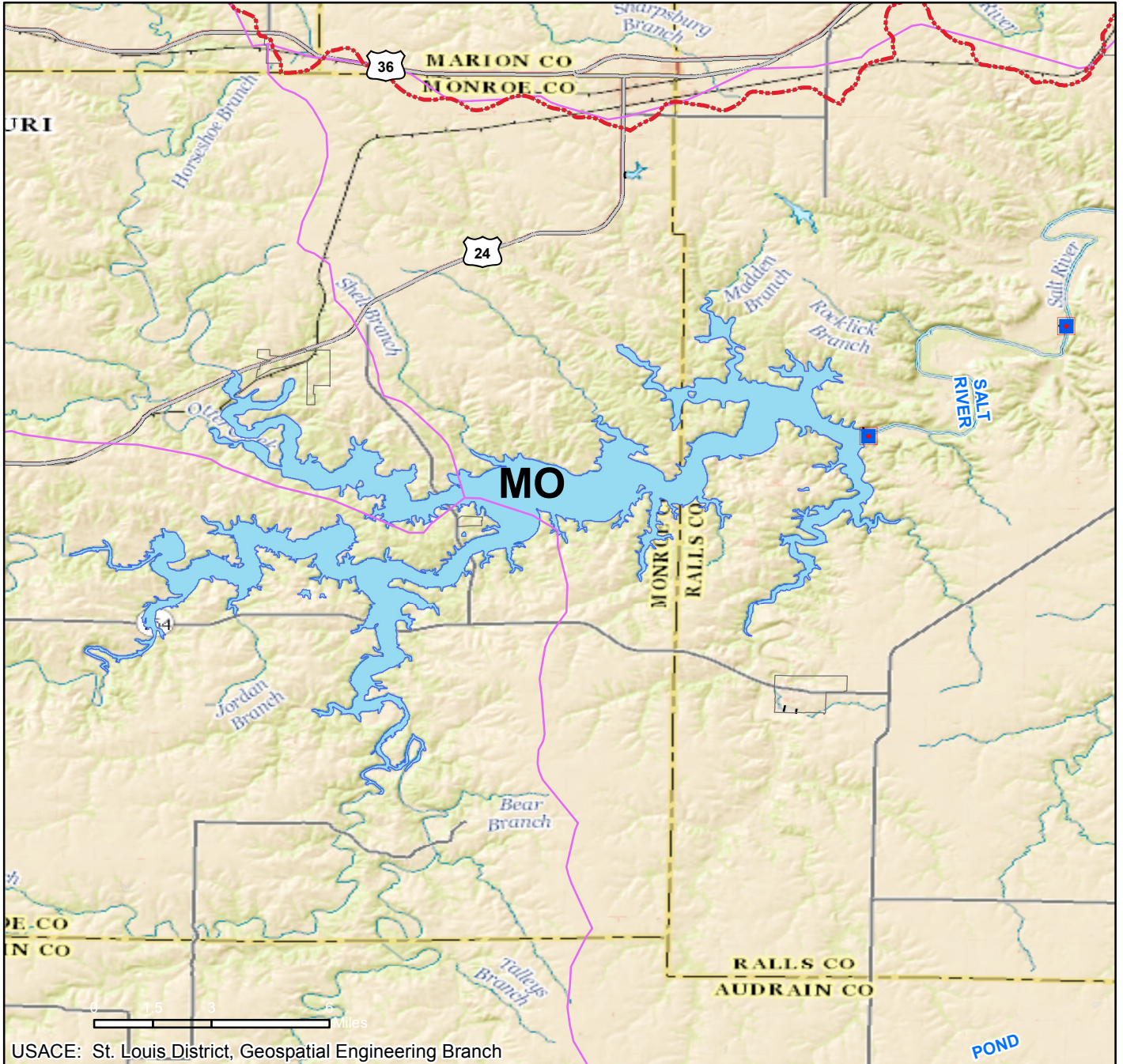
*Damaged Wire Rope  
Re-Regulation Dam*



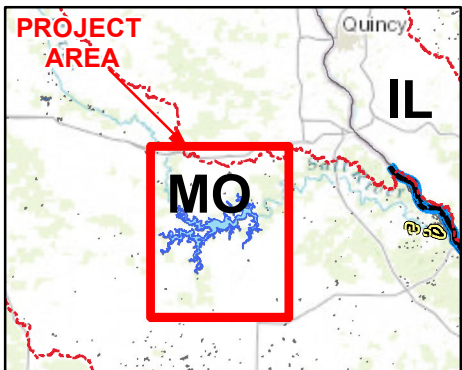
*Repair Main Dam  
Bridge Concrete Spall  
on underside of bridge*



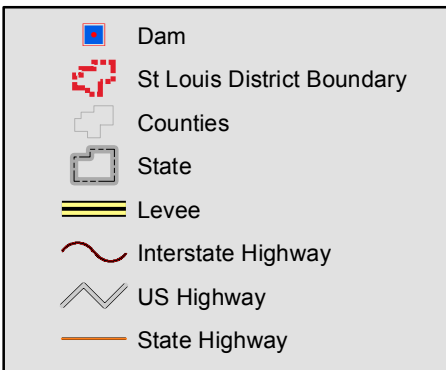
# CLARENCE CANNON DAM AND MARK TWAIN LAKE OPERATIONS & MAINTENANCE



**Vicinity Map**



**Legend**



**Location in District**

