



**US Army Corps of Engineers**  
St. Louis District

Section 206 of Water Resources Development Act 1996 (Public Law 104-303), as amended by WRDA 1999 (PL 106-53), as amended by WRDA 2007 (PL 110-114), as amended by WRRDA 2014 (PL 113-121)

# Project Fact Sheet

## Lake Lou Yaeger, IL

### Feasibility (CAP Section 206)

**Location:** The project area is located in the city of Litchfield within Montgomery County, Illinois, approximately 50 miles northeast of St. Louis, Missouri.

**Description:** The City of Litchfield has teamed with the St. Louis District to combat loss of lake depth due to sedimentation, reduced water quality, degraded fisheries, and shoreline erosion.

**Issues:** The project will reduce sedimentation, improve connectivity between northern tributaries and lake, improve dissolved oxygen, increase quality and quantity of native fish, and increase underwater habitat structure.

**Importance:** The feasibility study will examine opportunities for hydraulic dredging, sediment detention basin, lake draw down, artificial underwater reefs, off-shore revetment, on-shore revetment, breakwaters, littoral wetlands, and vegetative plantings to aid in restoring the aquatic ecosystem.

**Risk:** Without the project, sedimentation would continue to be an issue within the lake, which is occurring at faster than normal rate. This could lead to further loss in wetlands and aquatic ecosystem could degrade in quality as result of loss of lake depth.

**Consequence:** Without the project, the potential for wetland and aquatic ecosystem restoration would be reduced and continued sedimentation could result in loss of lake depth and recreation at site.



*Benefit of Off-Shore Revetment*

**Activities for FY 16:** Carryover funds from FY15 were used to finalize the Feasibility Report and submit it to MVD for the Alternative Formulation Briefing.

**Acquisition Strategy:** No contracts scheduled to be awarded in FY 16.

**Amount That Could Be Used in FY 17:** An additional amount of \$20,000 could be used to complete Feasibility Phase. Pending approval of the Feasibility Report, an amount of \$100,000 could be used to execute PPA and initiate plans and specs.

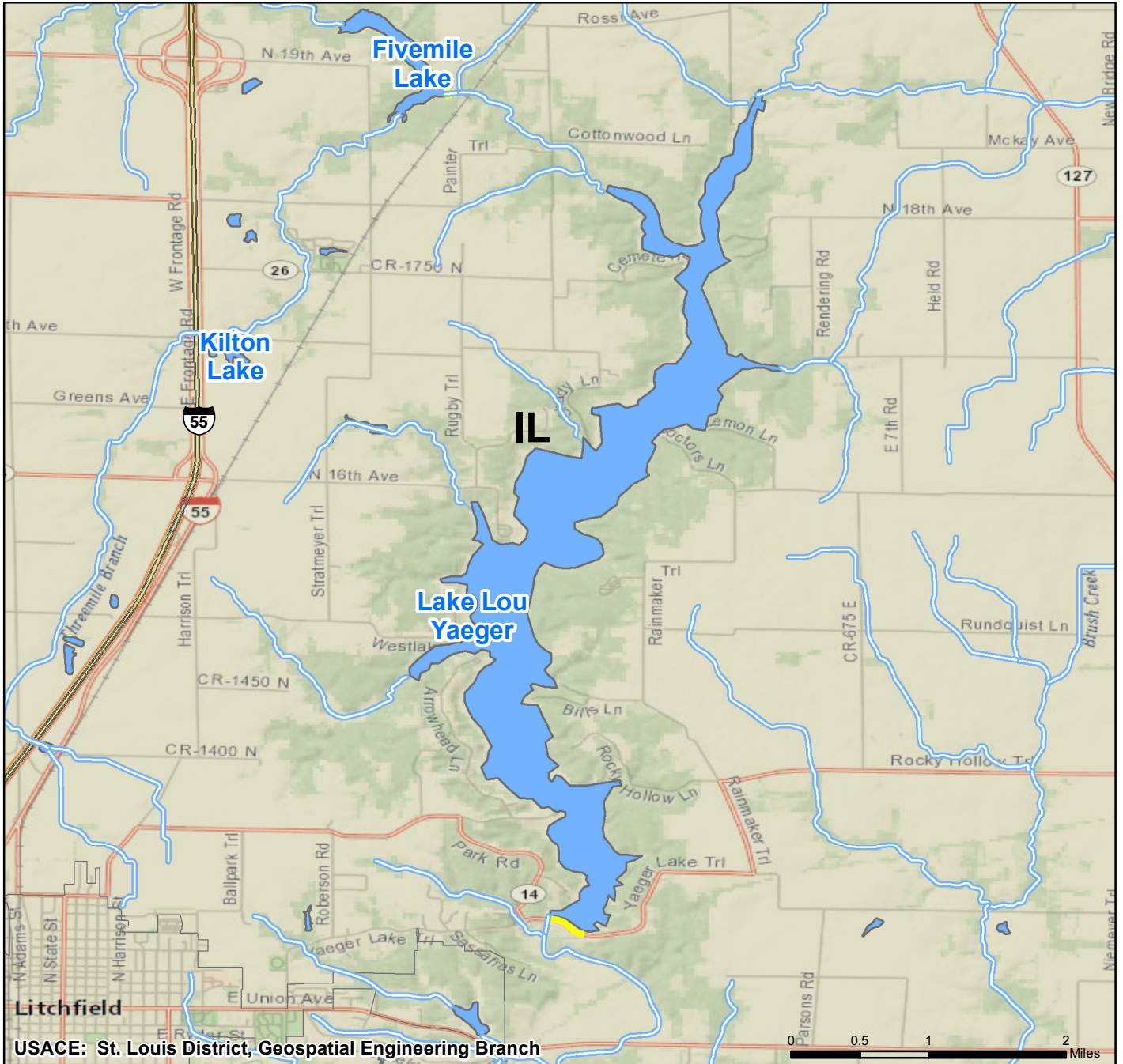
**Project Sponsor/Customer:** The City of Litchfield, Illinois

**Congressional Interest:** Senate: Durbin and Kirk.  
House: Davis (IL-13)

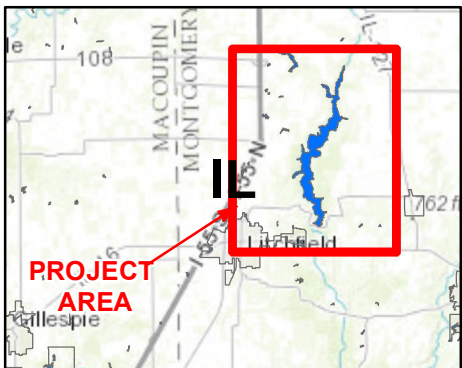
Phase	FY 16 Allocation	FY 17 Budget	FY 17 Total Capability
Feasibility	\$0	\$0	\$20,000
Design & Implementation	\$0	\$0	\$100,000

# LAKE LOU YAEGER RESTORATION

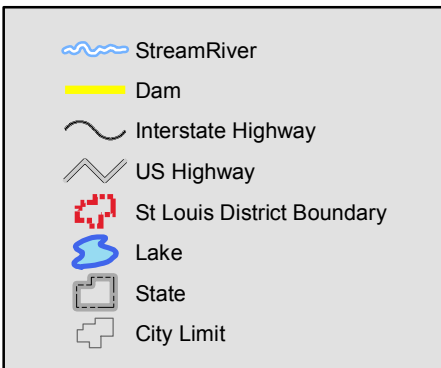
## CONTINUING AUTHORITIES PROGRAM



Vicinity Map



Legend



Location in District

