



**US Army Corps
of Engineers**
St. Louis District

Project Fact Sheet Illinois Waterway

River and Harbor Acts of 1927 and 1930

Operation and Maintenance (NAV)

Location and Description: The portion of the Illinois Waterway within the boundaries of the St. Louis District extends from the mouth of the Illinois River at Grafton, Illinois to the tailwater of LaGrange Lock and Dam at mile 80.15. The project maintains a nine-foot navigation channel by dredging/channel patrol, water management, and river engineering. The project has stewardship responsibility for 16,000 acres of public lands.

- Allocation FY 2016 (\$2,158k) (baseline service level \$2,279k)
 - Dredging and channel maintenance, includes \$350k re-programmed for emergency dredging caused from winter flooding
 - Minimal stewardship; management of recreational cabin outgrants
- FY 2017 President’s Budget (\$1,847k) Capability (\$8,050k) Top Items:
 - Operate and maintain the project (\$1,710k)
 - Perform additional dredging (\$340k)
 - Remove outgrant private exclusive use cottages (\$100k)
 - Construct River Training Structures (\$5,900k)
- Issues and Other Information
 - River training structures will significantly reduce and regulate dredging costs
 - Project has 16,000 acres of public land with very little environmental stewardship funds and no recreational investment for public access or education
 - Inadequate management of outgrant cabin sites causing public health risk and placing financial burden on other Federal, State, and Local Agencies.
 - Broadening partnerships in attempt to meet stewardship and recreation needs - Center for American Archeology at Kampsville
 - Current unfunded backlog is \$6,203k

Old Kampsville Lock and Dam site - Center for American Archeology cultural resource stewardship on Federal Lands



	FY12	FY13	FY14	FY15	FY16
-Federal Allocation	\$2,117k	\$1,632k	\$2,286k	\$1,808k	\$2,158k
- Supplemental	\$ 3k	\$ 0	\$ 0	\$ 0	\$ 0
- ARRA	\$ 0	\$ 0	\$ 0	\$ 0	\$ 0
-Non Appropriated Contributions	\$625k	\$340k	\$340k	\$230k	\$307k*
-Total Visits	189k	189k	189k	189k	395k*

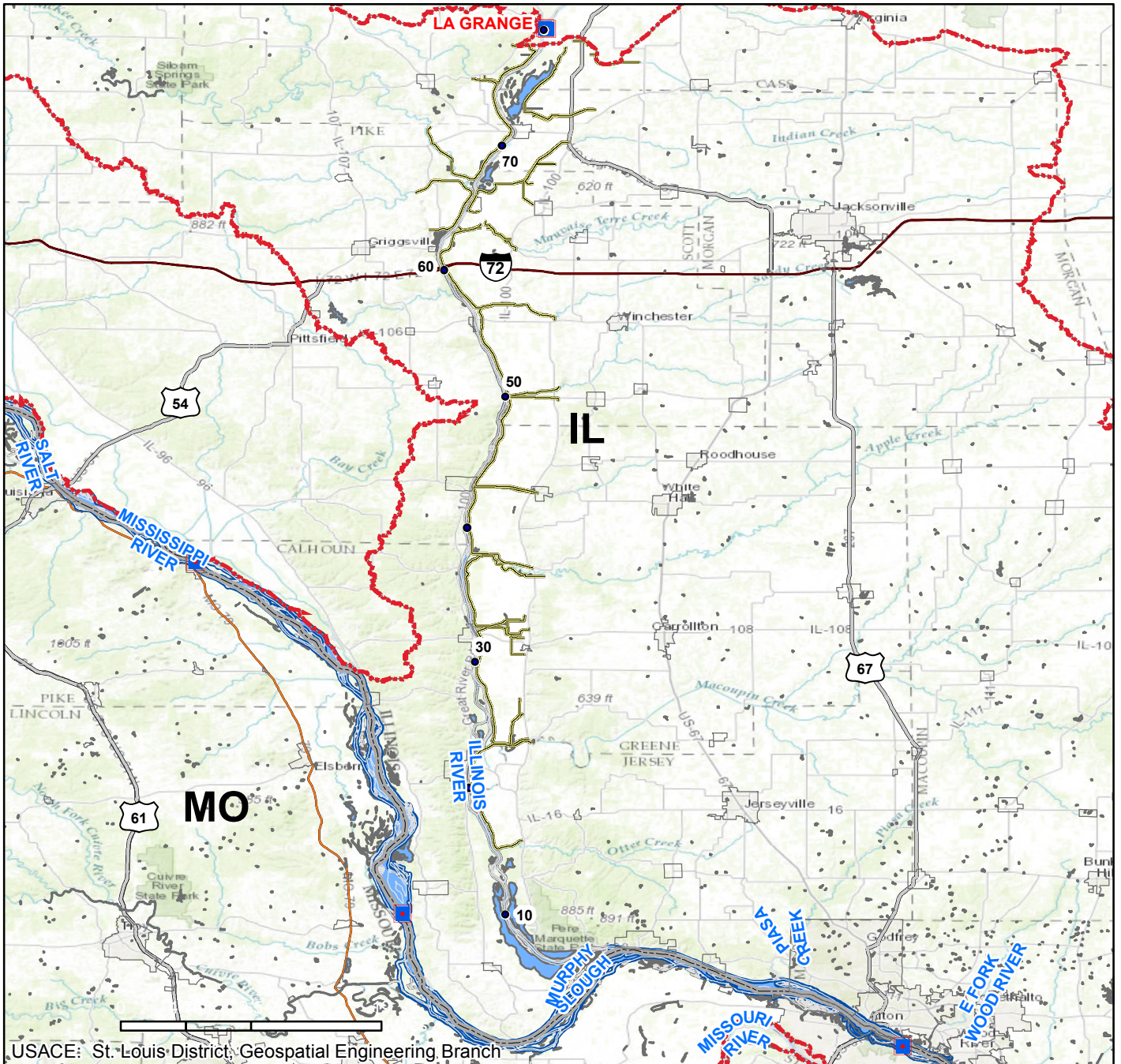
*Estimate

VALUE TO NATION	
Ton miles (FY13)	1,762,575,181
Tonnage (FY13)	22,352,922
Cost per Ton	\$.11
FY12 Visitor Spending	\$5,634,000
FY12 Jobs Supported (Rec spending only)	192
Rec Area Management	8
Acres Managed	16,000

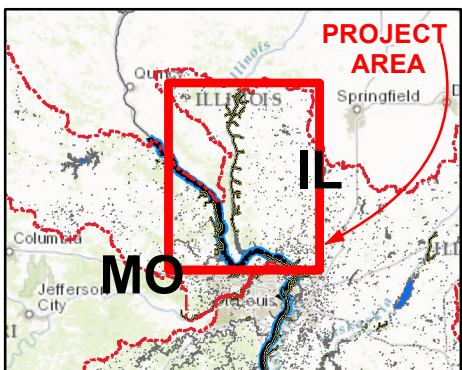


Public safety/health management of outgrant cabin Leases

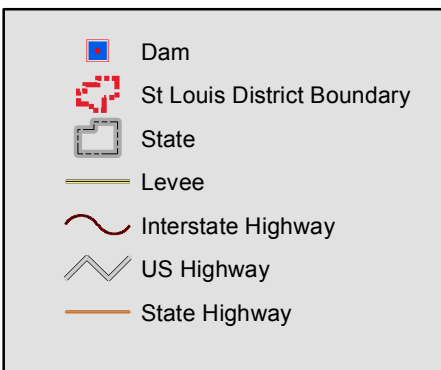
ILLINOIS WATERWAY OPERATIONS & MAINTENANCE



Vicinity Map



Legend



Location in District

