



**US Army Corps  
of Engineers**  
St. Louis District

# Project Fact Sheet

## Formerly Utilized Sites Remedial Action Program

Energy and Water Development Appropriations Act of 1998

### FUSRAP (Environmental)

**Location:** FUSRAP addresses areas formerly used by the Manhattan Engineer District/Atomic Energy Commission (MED/AEC) within the Mississippi Valley Division. There are five active sites within the St. Louis District FUSRAP. Four are located in the St. Louis area and one is located near Burlington, Iowa. (One completed site is located in Madison, Illinois.)

**Description:** FUSRAP was established in 1974 to address contamination resulting from activities associated with the Nation’s early atomic weapons program. Congress transferred the execution of FUSRAP from the Department of Energy to the Corps of Engineers in FY 1998. FUSRAP’s purpose is to protect human health and the environment primarily from exposure to radiological contamination. In Missouri the St. Louis District’s FUSRAP program consists of a 21.7 acre St. Louis Airport Site (SLAPS) north of Lambert International Airport in St. Louis County), the 145 SLAPS Vicinity Properties including Coldwater Creek (SLAPS VPs), the Latty Avenue Properties Site (Latty) in Berkeley, and the St. Louis Downtown Site (SLDS) which includes the Mallinckrodt facility and adjacent properties in the city of St. Louis. The Iowa, FUSRAP site is on the Iowa Army Ammunition Plant (IAAAP), located in Middletown, Iowa.

**Issues:** Records of Decision, in accordance with Comprehensive Environmental Response, Compensation and Liability Act (CERCLA) have been issued for all sites with the exception of some inaccessible areas at SLDS. All have found a need for removal of contamination in order to protect the public, with the exception of the No Action ROD for SLDS Inaccessible Soils Group 1 Properties issued in September 2014. In the case of the St. Louis sites, primary contaminants are radium, thorium and uranium. In the case of the Iowa site, the primary contaminant is depleted uranium (DU). Remedial actions are underway at SLAPS VPs, SLDS and IAAAP. Monitoring is underway at Latty and the SLAPS.

**Importance:** Analysis indicates presence of contamination at unacceptable levels (i.e. exceeding CERCLA risk range.)

**Risk:** Leaving contamination above remediation goals results in exposure of the public.

**Consequence:** Failure to meet remediation goals does not protect the public’s health.



Remediation at Duchesne Park along Coldwater Creek in July 2016.

**Activities for FY 16:** Funds were used to continue remediation of the three active projects (IAAAP, SLDS, and SLAPS VPs), complete release documents for eight properties, and /shipping/disposal of 30,500 cubic yards of contaminated material.

**Acquisition Strategy:** A follow-on remedial action contract for the St. Louis Sites was awarded in FY 16.

**Amount That Could Be Used in FY 17:** An amount of \$24,550,000 will be used for shipping/disposal of 18,000 cubic yards of contaminated material, complete release documents for five properties, and perform site security and monitoring in prep for closeout. An additional \$19,000,000 could be used to ship/dispose of 11,000 CY of contaminated material and continue sampling campaign.

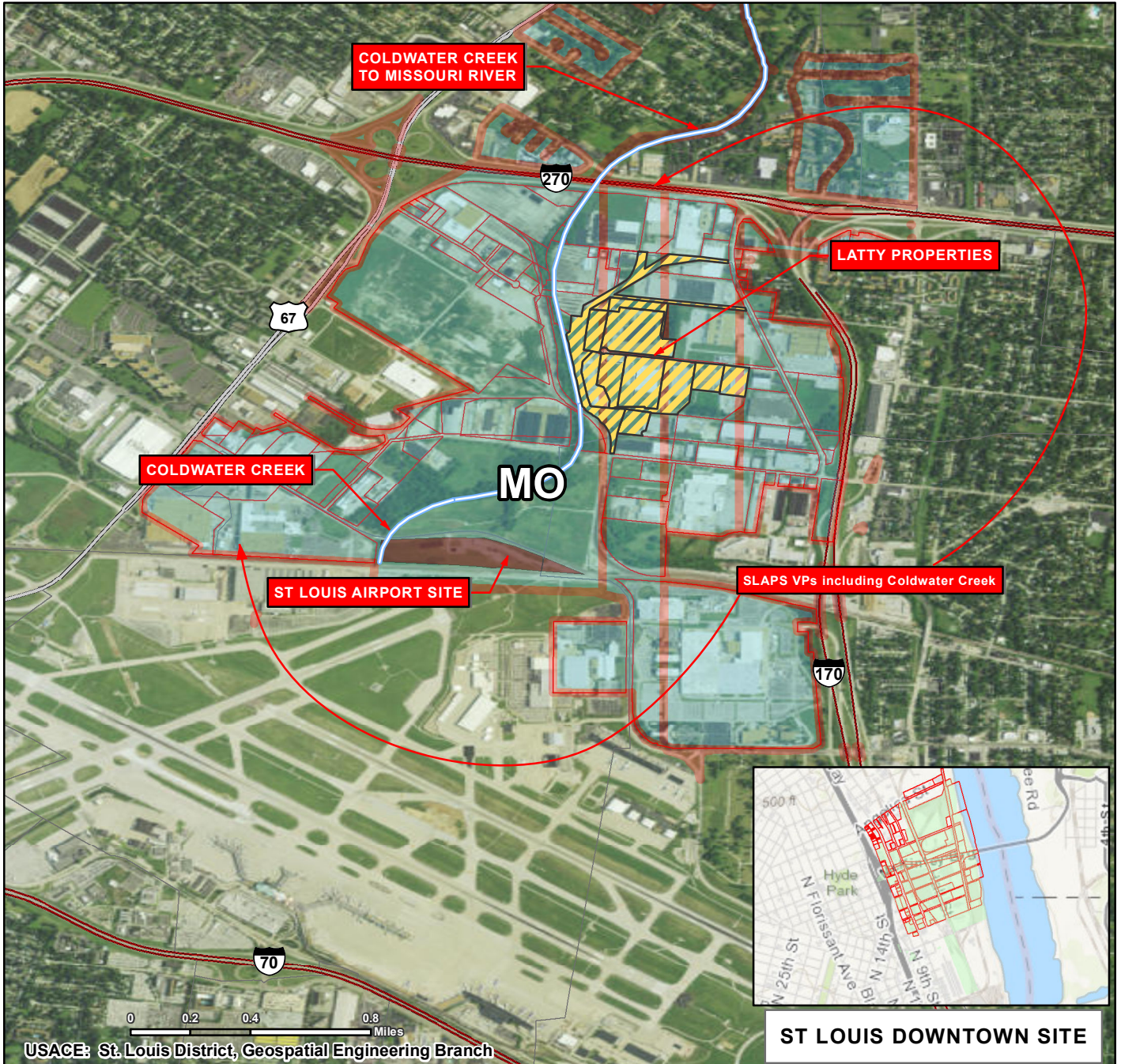
**Project Sponsor/Customer:** Project is 100% federally funded. Stakeholders include local businesses, residents, Missouri Department of Natural Resources/Iowa Department of Natural Resources, US EPA.

**Congressional Interest:** Senate: Blunt (MO), McCaskill (MO), Grassley (IA), Ernst (IA) House: Clay (MO-1), Wagner (MO-2), Loeb (IA-2).

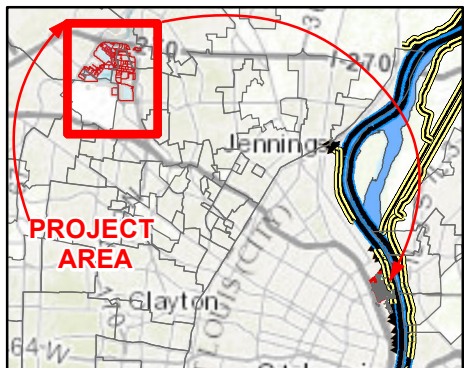
Phase	FY 16 Allocation	FY 17 Budget	FY 17 Total Capability
Remediation	\$44,550,000	\$24,550,000	\$43,550,000

# FUSRAP

## FORMERLY UTILIZED SITES REMEDIAL ACTION



### Vicinity Map



### Legend

- Coldwater Creek
- Latty Properties
- SLAPS
- Downtown Boundary
- SLAPS VPs Boundary
- Vicinity Property Boundary
- St Louis District Boundary
- City

### Location in District

