



**US Army Corps
of Engineers
St. Louis District**

Flood Control Act of 1965; Water Resources Development Act (WRDA) 1976, 2000 and 2007 (Section 1001). House Report 104-782, Appropriations for Energy and Water Development for FY 1997.

Project Fact Sheet

East St. Louis and Vicinity, IL

Investigations (Environmental)

Location: The project is located in Madison and St. Clair Counties, Illinois, along the east bank of the Mississippi River between river miles 175 and 195 above the mouth of the Ohio River. The project area comprises a portion of the Mississippi River floodplain nationally known as the "American Bottom". The study area includes 55,000 of the total 112,000 acres of American Bottom and is completely levee protected. The levee was constructed by USACE and provides an urban level of protection. Approximately 250,000 residents and \$4.8 billion in economic value are protected by the levee making this area the largest urbanized floodplain north of New Orleans.

Description: Section 1001 of the Water Resources Development Act of 2007 authorizes restoration in 8 action areas restoring roughly 4,900 acres of degraded and fragmented aquatic habitat types in the study area. The ecosystem restoration project will restore bottomland forest habitat (1,700 acres); floodplain prairie habitat (1,100 acres); marsh and shrub swamp habitat (840 acres); lake habitat (460 acres); upland riparian forest (380 acres); and 10 miles of floodplain streams. These aquatic resources support two Federally threatened species and 47 state-listed endangered and threatened species known to occur in the study area. The aquatic resource restoration will provide interior flood attenuation reducing average annual flood damages by an estimated \$1.4M.

Issues: An approved Chief's Report was completed in 2004 but was returned by the ASA(CW) as lacking sufficient analysis to support a Federal interest. An addendum to the Chief's Report was prepared in 2013. The addendum supports the initiation of a single phase General Reevaluation Report (GRR) and will build upon work completed in the 2004 report and the 2013 addendum.

Importance: The study supports the goals of the North American Waterfowl Management Plan, Habitat Needs Assessment of the Upper Mississippi River Restoration Program, Clean Water Action Plan and Action Plan of the Mississippi River Gulf of Mexico Watershed Nutrient Task Force.

Risk: The project area contains widespread aquatic ecosystem degradation through fragmentation of natural systems caused by intensive urbanization; the loss of historic ecosystem disturbances such as natural flooding and wildfires; the loss of habitat quality; degradation of floodplain streams from drainage improvements, mainline

and flank levees which disconnect hydraulic interaction between channels and adjacent wetlands, the loss of biodiversity and abnormal sedimentation which results in the loss of interior flood storage.

Consequence: The Water Resources Development Act of 1986 declared the Upper Mississippi River as nationally significant by Congress. This designation included the river and all its adjoining habitats. The project area supports habitat critical to Federally threatened species, and contributes to the life cycle requirements of more than 50 migratory bird species covered by international treaties. Without project restoration, enhancement and protection; these resources will be lost.



Degraded wetland within project area.

Activities for FY 16: No funds available, continuing to engage with non-federal sponsor under other Corps authorities.

Acquisition Strategy: No contracts were scheduled to be awarded in FY 16.

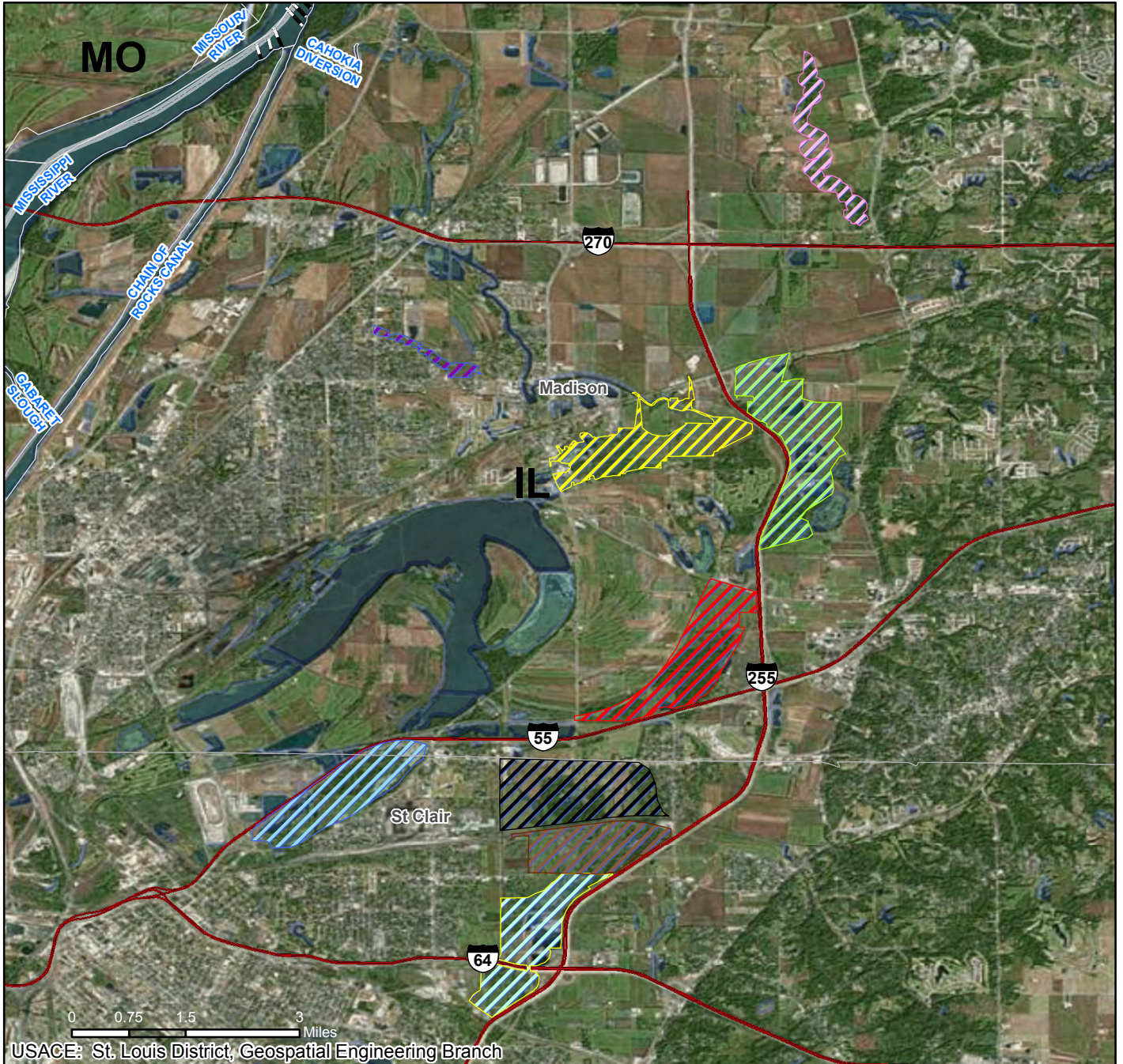
Amount That Could Be Used in FY 17: An amount of \$300,000 could be used to initiate a single phase GRR to include a detailed cost estimate, a full updated real estate appraisal, and needed internal reviews.

Project Sponsor/Customer: Madison County

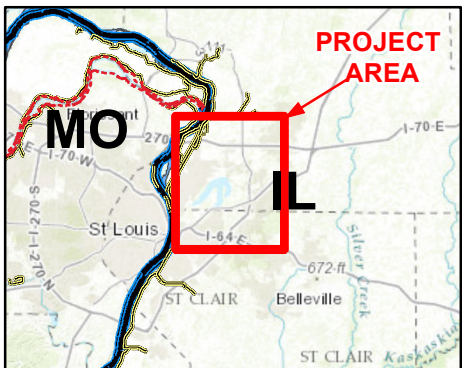
Congressional Interest: Senate: Kirk (R) and Durbin (D) House: Bost (IL-12), Davis (IL-13), and Shimkus (IL-15).

Phase	FY 16 Allocation	FY 17 Budget	FY 17 Total Capability
Investigations	\$0	\$0	\$300,000

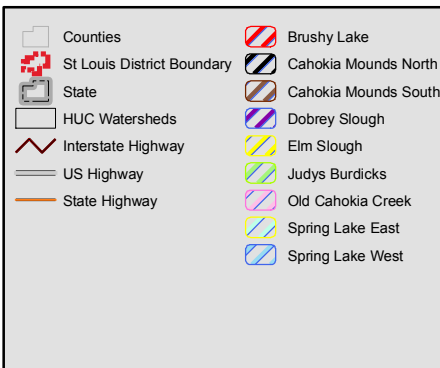
EAST ST LOUIS AND VICINITY INVESTIGATIONS



Vicinity Map



Legend



Location in District

