



**US Army Corps
of Engineers**
St. Louis District

Project Fact Sheet

Chain of Rocks, IL (Deficiency Correction)

The Rivers & Harbor Act of 1945

Construction (FRM)

Location: The Chain of Rocks levee is located in Madison County, Illinois, in the vicinity of Granite City and East St. Louis.

Description: The Federal levee did not perform satisfactorily during the flood of 1993. Sand boils developed along a large portion of the levee, indicative of significant foundation underseepage problems. The project purpose is to correct design deficiencies and assure that the Chain of Rocks levee will withstand a 0.2 percent chance of exceedance (500-year). The deficiency correction includes the installation of relief wells, construction of levee berms, a pump station, relocations, and mitigation. The levee protects a major urban area.

Issues: Recently completed construction restores the authorized level of protection for the 0.2 percent chance of exceedance (500-year event) for the Chain of Rocks levee. This Federally-owned and operated levee is an integral part of the Metro East urban levee system which currently does not provide the authorized level of protection. The sponsor for the Metro East system, Southwestern Illinois Flood Prevention District Council (FPD), is performing work to improve the system to 1.0 percent chance of exceedance to attain 100-year level of protection and maintain FEMA accreditation. USACE policy prohibits the Corps from certifying only a portion of a levee system; therefore, USACE's role will be to evaluate the East St. Louis Flood Protection Project (including both MESD and COR segments) for the purposes of National Flood Insurance Program (NFIP) accreditation through information resulting from a thorough Risk Assessment. This approach is consistent with both USACE and FEMA guidelines in which a systems approach is maintained.

Importance: The Metro East urban levee system provides protection for approximately 200,000 inhabitants and economic assets valued at over \$7.2 billion. Project is 100 percent construction complete.

Risk: The recently completed construction restores the authorized level of protection provided by the Chain of Rocks levee segment.

Consequence: With completion of deficiency corrections, the Chain of Rocks levee segment has transitioned to ongoing Operation and Maintenance by the Corps of Engineers.



New Chain of Rocks Pump Station

Activities for FY 16: FY15 carryover funds will be used to initiate evaluation of the ESTL system (both MESD and COR segments) for the purposes of NFIP accreditation through information resulting from a thorough Risk Assessment. Carryover funds will also be used to initiate preliminary activities to complete project financial closeout.

Acquisition Strategy: N/A

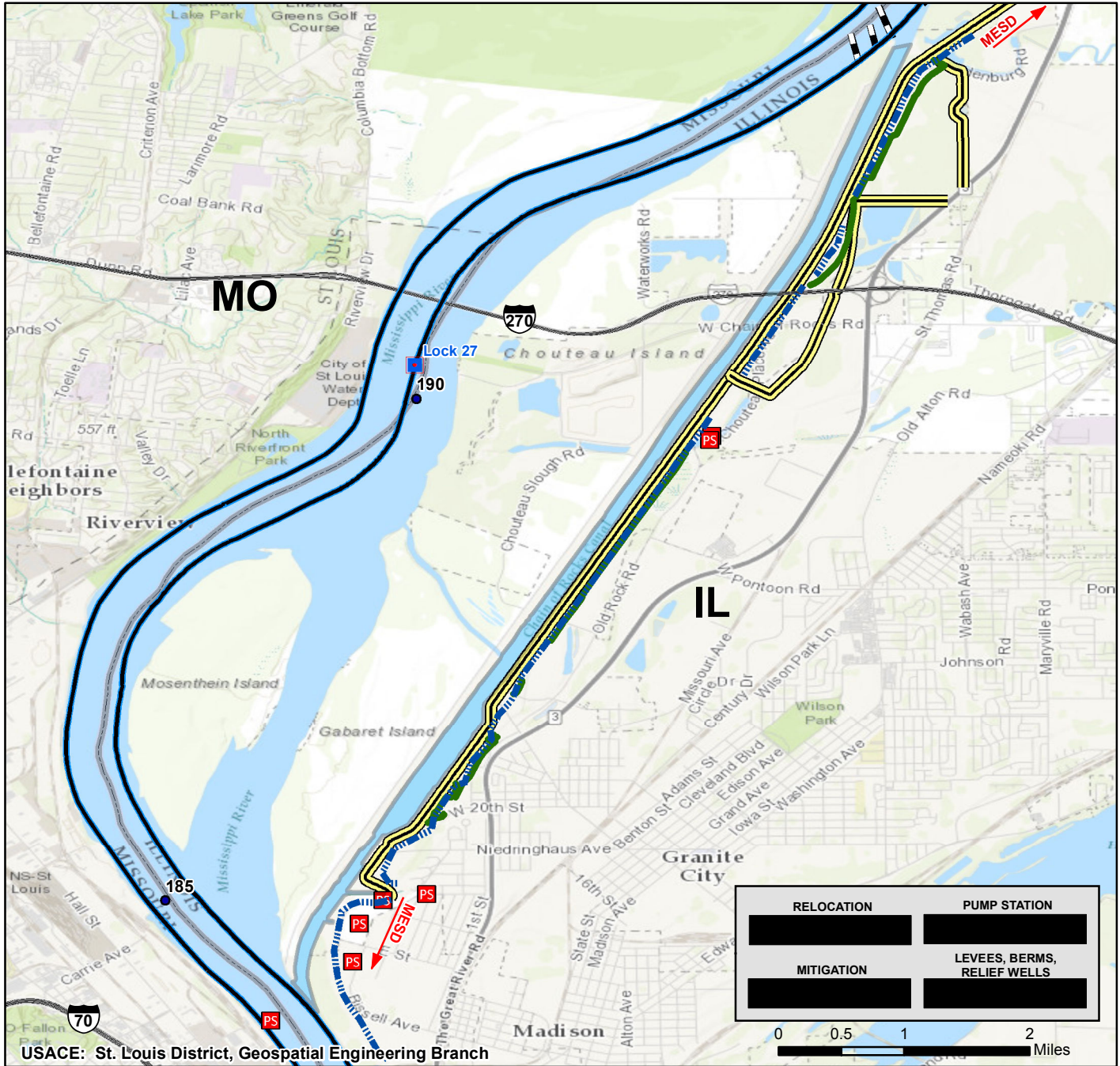
Amount That Could Be Used in FY 17: Carryover funds will be used to complete the Risk Assessment and project closeout.

Project Sponsor/Customer: Project is 100% federally funded.

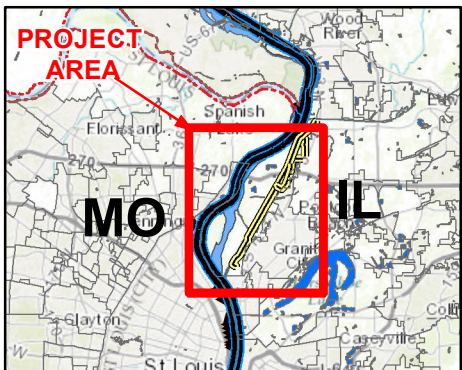
Congressional Interest: Senate: Durbin (IL) and Kirk (IL)
House: Bost (IL-12), Davis (IL-13) and Shimkus (IL-15).

Phase	FY 16 Allocation	FY 17 Budget	FY 17 Total Capability
Construction	\$0	\$0	\$0

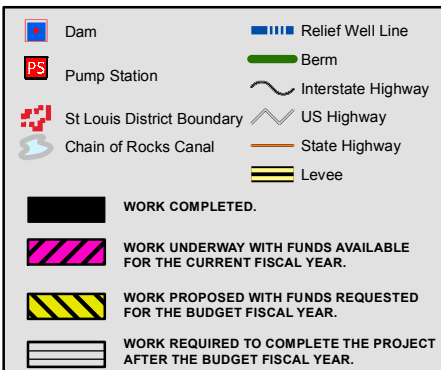
CHAIN OF ROCKS CANAL, MISSISSIPPI RIVER IL CONSTRUCTION



Vicinity Map



Legend



Location in District

