



**US Army Corps
of Engineers**
St. Louis District

Project Fact Sheet

Alton to Gale Organized Levee Districts, IL & MO

Flood Control Act (FCA) 1936 (Public Law (PL) 74-738), FCA 1938 (PL 75-761), and FCA 1946 (PL 79-526).

Construction (FRM)

Location: The Alton to Gale Levee System is located adjacent to the Mississippi River between Alton and Gale, Illinois, and is made up of many small levees grouped together into a combined 200+ mile system.

Description: Portions of the Alton to Gale levee system have experienced a significant number of levee embankment failures (slides) which have severely reduced the ability of these systems to provide the authorized level of flood protection.

Issues: Levee system is at risk for failure during high water events due to design deficiency. Highly plastic soils were used in the original levee construction that promotes recurrent embankment slides in portions of the levee system. As slides develop, they have been repaired by the Corps since the 1960's. Repairs have been performed under the authorized Alton to Gale project and the PL84-99 program. The ASA (Civil Works) requested the Corps to provide a solution for the entire levee system.

Importance: Numerous areas within the levee system are deficient, resulting in a risk of levee embankment failure. Emergency repairs during and immediately following flood events continue to be a chronic problem. To date, 859 levee slides have been repaired within the system.

Risk: Levee slides can result in a reduction in the ability of the individual levees to provide the authorized level of flood protection.

Consequence: Levee slides can result in a breach of the levee and impact the road system. If levee failure occurs during a high water event, a breach in the flood protection system is possible. If one slide area completely fails, the area protected by the levee could be flooded in a matter of hours.



Typical Alton-Gale Levee Slides (2008 Flood)

Activities for FY 16: Carryover funds from FY15 will be used to finalize and submit final Limited Reevaluation Report (LRR) for MVD review and approval.

Acquisition Strategy: No contracts are scheduled to be awarded in FY 16.

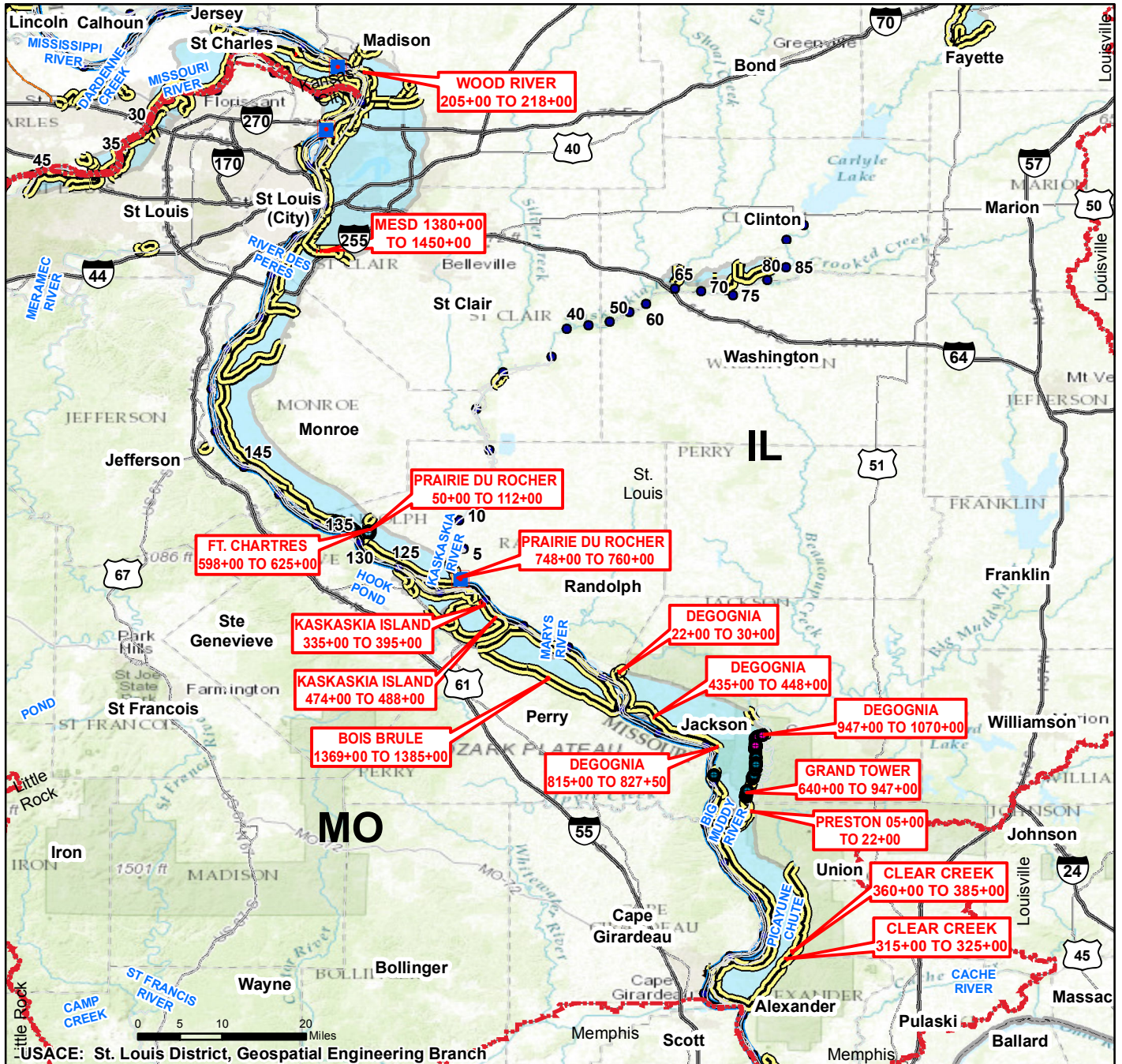
Amount That Could Be Used in FY 17: N/A

Project Sponsor/Customer: Grand Tower, Degognia-Fountain Bluff, Prairie du Rocher, Metro East, Clear Creek, Kaskaskia Island, Bois Brule, Fort Chartres, Preston, and Wood River Drainage and Levee Districts.

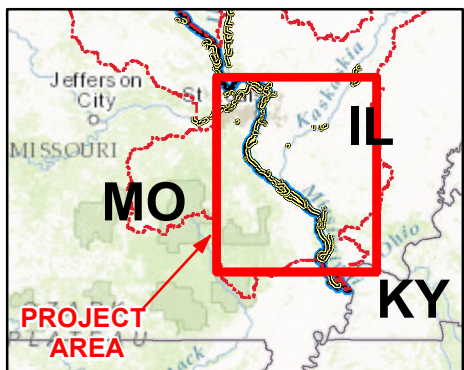
Congressional Interest: Senate: Durbin and Kirk (IL); House: Bost (IL-12).

Phase	FY 16 Allocation	FY 17 Budget	FY 17 Total Capability
Construction	\$0	\$0	\$0

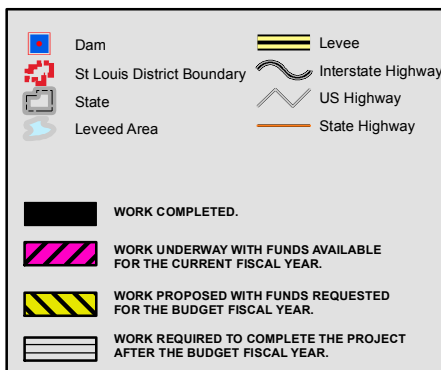
ALTON TO GALE SLIDE - REVISED REACHES CONSTRUCTION



Vicinity Map



Legend



Location in District

