



US Army Corps  
of Engineers  
Louisville District®

# Floodplain Management Services Program

## What the US Army Corps of Engineers Can Do

The Floodplain Management Services (FPMS) Program provides the full range of technical services and planning guidance that is needed to support effective floodplain management.

### Types of Assistance

#### General Technical Services:

The Program Develops or interprets site-specific data on flooding issues. It also provides information on natural or cultural floodplain resources before and after the use of floodplain management measures

#### General Planning Guidance:

On a larger scale, the program provides assistance and guidance in the form of "Special Studies" on all aspects of floodplain management planning, including the possible impacts of off-floodplain land use changes on the physical, socio-economic, and environmental conditions of the floodplain. Special Studies are accomplished at 100% Federal cost. However, funding for these studies is very limited and competitive. See the next page for a chart outlining the different floodplain management services we offer. The program also provides guidance and assistance for meeting standards of the National Flood Insurance Program and for conducting workshops and seminars on nonstructural floodplain management measures, such as flood proofing and relocation of structures from the floodplain.

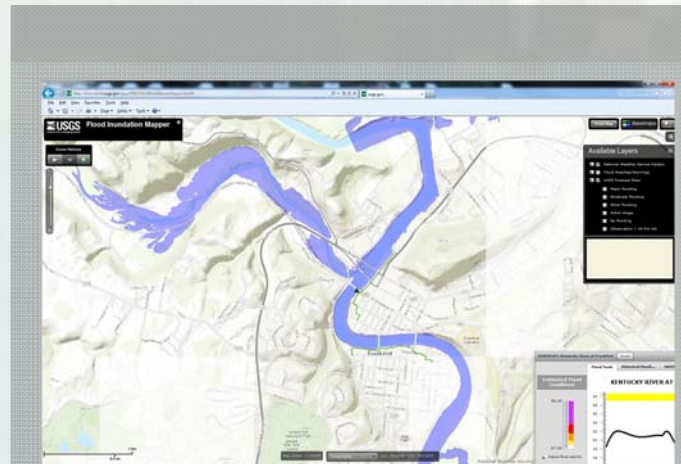
#### Guides, Pamphlets, and Supporting Studies:

Studies are conducted under the program to improve the methods and procedures for mitigating flood damages. Guides and pamphlets also are prepared on flood proofing techniques, floodplain regulation, floodplain occupancy, natural floodplain resources, and other related aspects of floodplain management

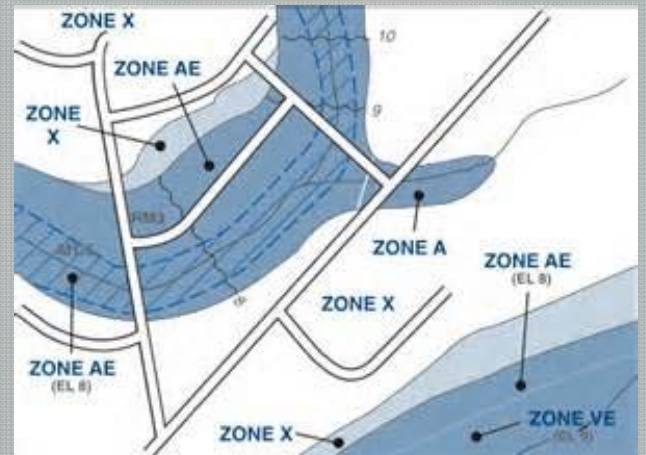
### Cost Sharing Information

Program services are provided to state and local governments, other non-Federal public agencies without charge based on available funding. Voluntary contribution of funds by States, Local Governments, and Native American Tribes for the purposes of expanding the scope of services requested under Floodplain Management Services is also allowed.

Program services also are offered to non-water resource Federal agencies and to the private sector on a 100-percent cost recovery basis. For most of these requests, payment is required before services are provided. A schedule of charges is used to recover the cost of services taking up to one day to provide. Letter requests or signed agreements are used to charge for those that take longer.



Flood inundation mapping efforts can be undertaken under the Floodplain Management Services Program.



Existing floodplain maps, including Flood Insurance Rate Maps can be reviewed and analyzed under the Floodplain Management Services Program.

## **Floodplain Management Services We Offer**

### **Flood Damage Mitigation Study**

A study of flooding problems within a community with recommendations of measures to alleviate flooding or reduce damages.

### **Flood Warning or Preparedness Study**

This may include a report or the design of a warning system and emergency evacuation plan based on river stages and rates of rise.

### **Stormwater Management Study**

Analysis of flooding problems caused by inadequate stormwater drainage and recommend improvements.

### **Special Flood Hazard Information Report**

Delineate the 100-year or other frequency floodplain and/or floodway. A local community could submit this report to FEMA to extend or revise FIS floodplains.

### **GIS Floodplain Maps**

Mapping of floodplains using Geographic Information System.

### **Floodplain Delineation/Inundation Maps**

Showing areas flooded at various river stages. This could be used for emergency planning or to set floodplain development policies.

### **Community Flood Zone Database:**

This could contain flood zone information of properties and structures located within designated floodplains.

### **Elevation Reference Mark Database**

This could include reference elevations for community planning purposes or for use by individuals.

### **Flood Control Planning Database**

A state-wide inventory of all flood control structures and specific information about each.

### **Dam Failure Analysis**

Model and prepare maps showing the effects of a dam failure using a 3-dimensional flow model.

### **Urbanization Analysis**

This could look at the effects of watershed development on flood flows and floodplain boundaries. This may be used by a community to set development policy.

### **HEC-1 and HEC-2 Workshops**

Conduct Workshops on HEC-1 (hydrologic) and HEC-2 (stream profile) computer models.

### **Floodproofing Workshops**

Conduct workshops on floodproofing methods for existing buildings located in floodplains.

### **Community Rating System Support**

Assistance in qualifying for and preparing applications for FEMA's Community Rating System. This may include several of the above items as well as design of floodproofing for repetitive loss structures.

## **How to Request Assistance**

A Floodplain Management Services study can be initiated upon receipt of a request from a sponsoring agency empowered under State law to provide local partnership.

## **For more information, contact**

Brandon R. Brummett, P.E., PMP  
US Army Corps of Engineers Louisville District  
Outreach Coordinator  
502-315-6883  
brandon.r.brummett@usace.army.mil