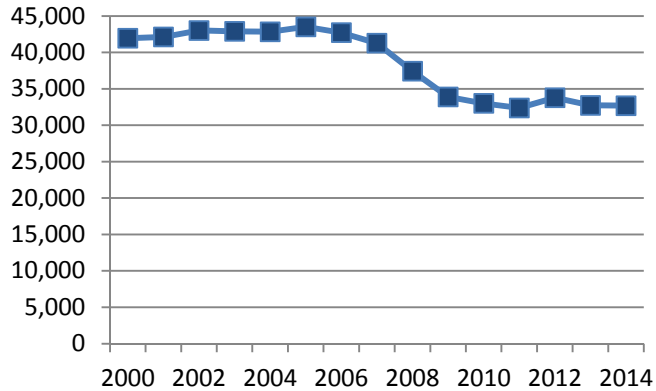


# Key Outcome Measures – FHWA Strategic Plan (thru January 2016)

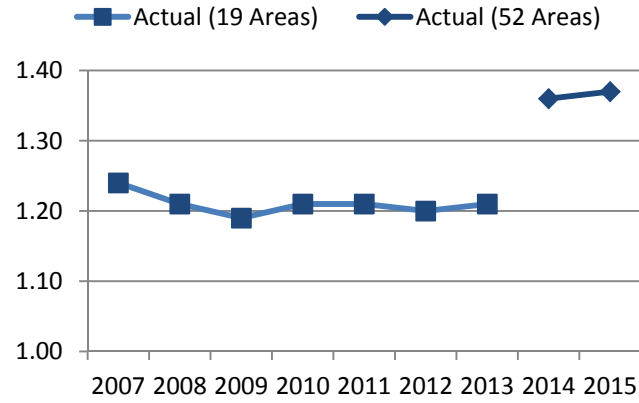
**Highway Fatalities, 2000-2014**

Source: NHTSA Fatal Analysis Reporting System



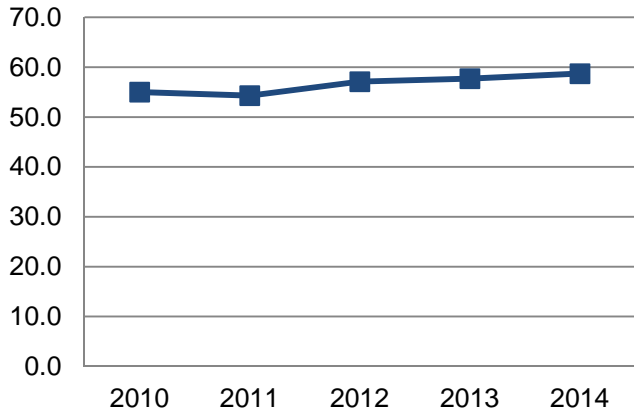
**Travel Time Reliability (TTI) in Urban Areas, FY 2007-15**

Source: FHWA Urban Congestion Report and National Performance Management Research Data Set



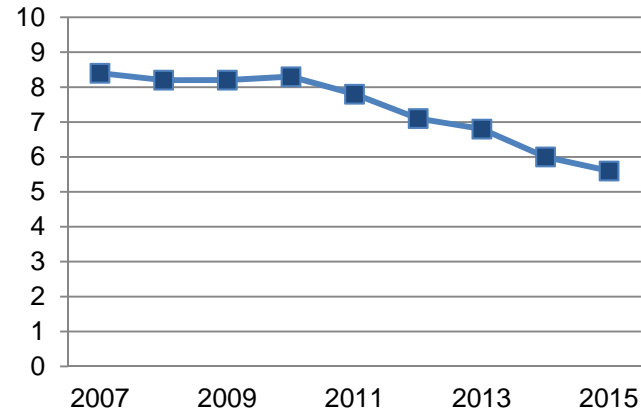
**NHS Pavement Condition, 2000-2014  
As Percent of Travel Good Rated Ride**

Source: FHWA Highway Performance Monitoring System



**NHS Bridge Condition, 2007-2015  
As Percent of Deck Area on Structurally Deficient Bridges**

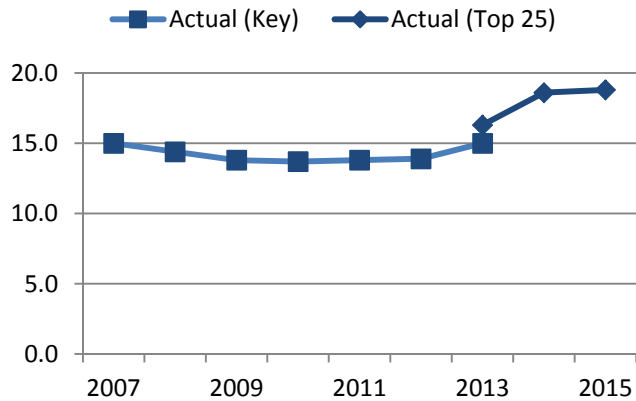
Source: FHWA National Bridge Inventory



## Key Outcome Measures – FHWA Strategic Plan (thru January 2016)

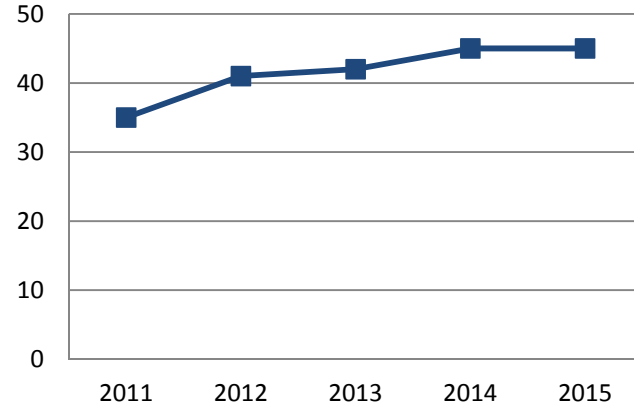
### Travel Time Reliability (BI) in Top 25 Domestic Freight Corridors, FY 2007-15

Source: FHWA and American Transportation Research Institute



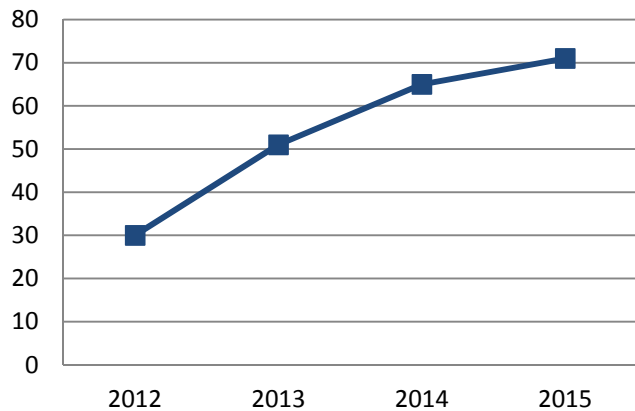
### Median Number of Months to Complete an Environmental Impact Statement, FY 2002-15

Source: FHWA Project and Program Action Information System



### Vulnerability Assessment of the Highway System, FY 2012-15 as Number of States and MPOs that have conducted

Source: FHWA Office of Planning, Environment and Realty



### Current ADA Transition Plans that include Public ROW, FY 2011-15, As Number of States

Source: FHWA Office of Civil Rights

