

Labor Force Characteristics by Race and Ethnicity, 2014



In 2014, the overall unemployment rate for the United States was 6.2 percent; however, the rate varied across race and ethnicity groups. Among the race groups, the rates were higher for Blacks (11.3 percent), American Indians and Alaska Natives (11.3 percent), and people of Two or More Races (10.2 percent) than for Asians (5.0 percent), Whites (5.3 percent), and Native Hawaiians and Other Pacific Islanders (6.1 percent). The jobless rate for people of Hispanic or Latino ethnicity was 7.4 percent, higher than the rate of 5.9 percent for non-Hispanics.

Labor market differences among the race and ethnicity groups are associated with many factors, not all of which are measurable. These factors include variations across the groups in educational attainment; the occupations and industries in which the groups work; the geographic areas of the country in which the groups are concentrated, including whether they tend to reside in urban or rural settings; and the degree of discrimination encountered in the workplace.

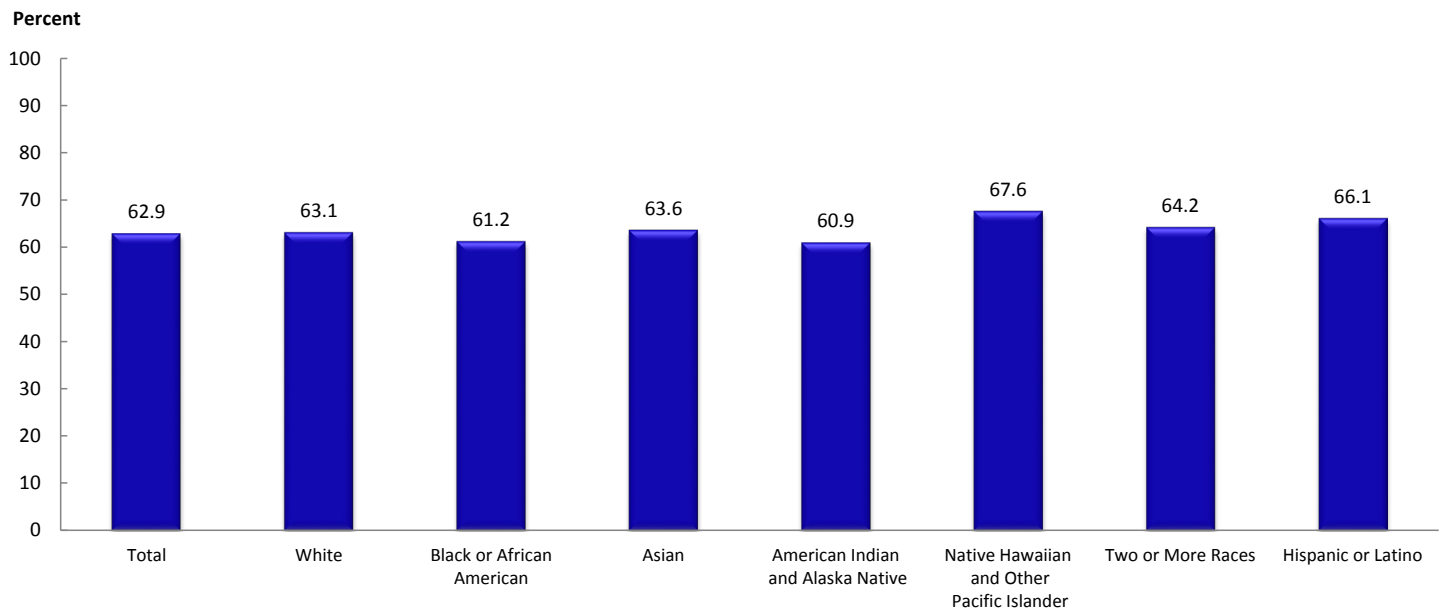
This report describes the labor force characteristics and earnings patterns among the largest race and ethnicity groups living in the United States—Whites, Blacks, Asians, and Hispanics—and provides detailed data through a set of supporting tables. The report also includes a limited amount of data for American Indians and Alaska Natives, Native Hawaiians and Other Pacific Islanders, people who are of Two or More Races, detailed Asian groups, and detailed Hispanic ethnicity. Recent editions of this report have included the following detailed Hispanic ethnicity categories: Mexican, Puerto Rican, Cuban, Central and South American, and Other Hispanic or Latino. This year, the latter two categories have been expanded into five additional categories—Salvadoran, Other Central American, South American, Dominican, and Other Hispanic or Latino. Due to their relatively small sample sizes, estimates for these additional groups are not included in all tables.

The data are obtained from the Current Population Survey (CPS), a monthly survey of 60,000 households that is a rich

CONTENTS

Overview.....	1
Composition of the labor force	2
Labor force participation.....	2
Employment.....	3
Educational attainment.....	3
Occupation and industry	4
Families and mothers	6
Unemployment and not in the labor force	6
Earnings	7
Statistical Tables	8
Technical Notes.....	58

Chart 1. Labor force participation rates by race and Hispanic or Latino ethnicity, 2014 annual averages



Note: People whose ethnicity is identified as Hispanic or Latino may be of any race.
 Source: Current Population Survey, U.S. Bureau of Labor Statistics.

source of information on the labor force. For definitions of terms and concepts used in this report, see the technical notes. Additional information about the CPS can be found at www.bls.gov/cps/documentation.htm.

The following sections highlight some of the major findings on the labor force characteristics of race and ethnicity groups in 2014.

Composition of the labor force

By race, Whites made up the majority of the labor force (79 percent). Blacks and Asians made up an additional 12 percent and 6 percent, respectively. American Indians and Alaska Natives made up 1 percent of the labor force, while Native Hawaiians and Other Pacific Islanders made up less than 1 percent. People of Two or More Races made up 2 percent of the labor force. (See table 1.)

Among Asians participating in the labor force, the largest group was Chinese, making up 22 percent of all Asians. Asian Indians made up 21 percent, followed by Filipinos (17 percent), Vietnamese (10 percent), Koreans (9 percent), and Japanese (5 percent). The remainder—17 percent—were classified as Other Asian, which includes individuals who reported an Asian group not listed above—such as Pakistani, Cambodian, and Hmong—and those who reported two or more Asian groups. (See table 2.)

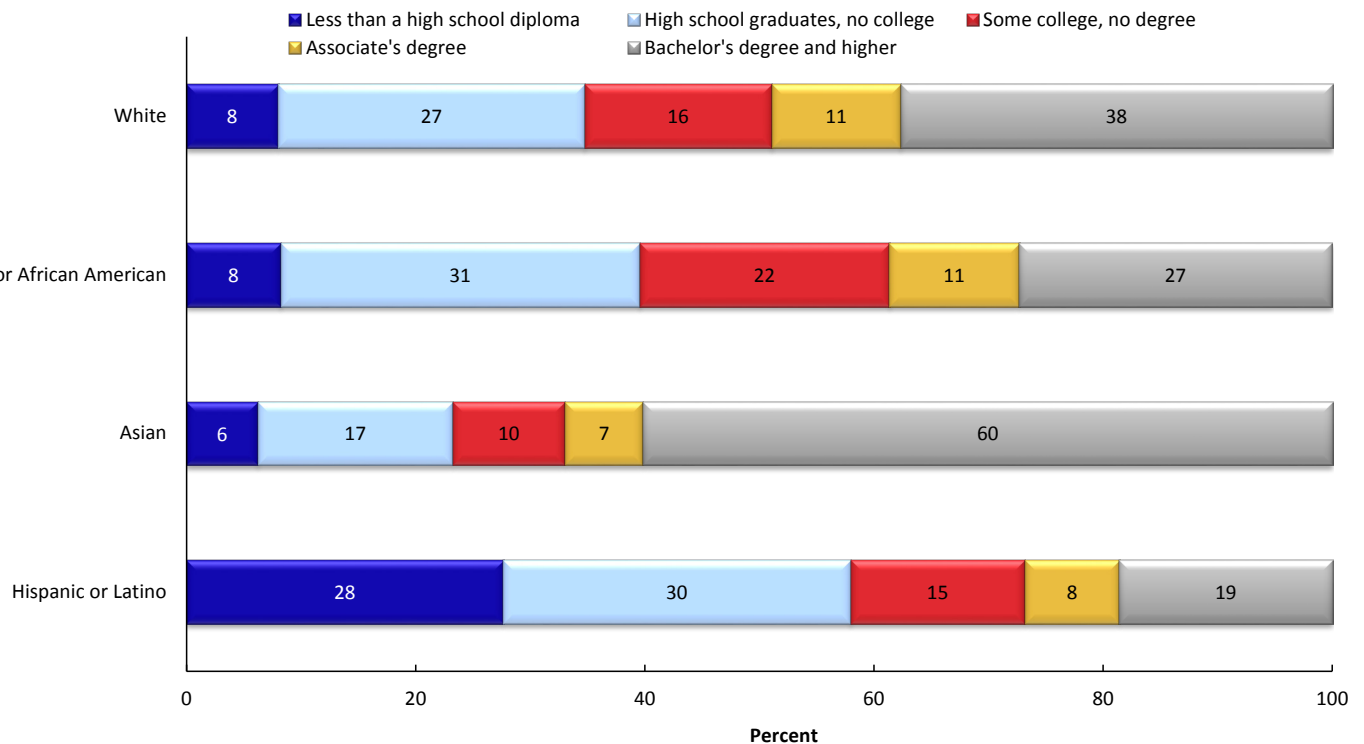
Sixteen percent of the labor force were people of Hispanic or Latino ethnicity. People of Hispanic or Latino ethnicity may be of any race. The majority of Hispanics (89 percent) in the labor force were White, 4 percent were Black, and 1 percent were Asian. (See table 2.) By detailed ethnicity, the majority of Hispanics in the labor force were Mexican (62 percent). Central Americans—which includes Salvadorans and Other Central Americans (excluding Salvadorans)—made up 10 percent. Eight percent of Hispanics were Puerto Rican, 7 percent were South American, and 4 percent were Cuban. An additional 9 percent were classified as Other Hispanics or Latinos—which includes Dominicans and Other Hispanics or Latinos (excluding Dominicans).

Labor force participation

Among the race and ethnicity groups, Native Hawaiians and Other Pacific Islanders (67.6 percent) and Hispanics (66.1 percent) had the highest labor force participation rates, while American Indians and Alaska Natives (60.9 percent) and Blacks (61.2 percent) had the lowest participation rates. The participation rates were 63.6 percent for Asians, 63.1 percent for Whites, and 64.2 percent for people of Two or More Races. (See tables 1, 2, 3, and 4 and chart 1.)

Among adult men (age 20 and older) in the largest race and ethnicity groups, Hispanics (81.0 percent) were more likely

Chart 2. Educational attainment of the labor force age 25 and older by race and Hispanic or Latino ethnicity, 2014 annual averages



Notes: People whose ethnicity is identified as Hispanic or Latino may be of any race. Data may not sum to 100 percent due to rounding.
Source: Current Population Survey, U.S. Bureau of Labor Statistics.

to participate in the labor force than were the other groups, while Blacks (67.3 percent) were the least likely. The labor force participation rate for Asian men (75.8 percent) was higher than the rate for White men (72.2 percent). Among adult women, Blacks (61.6 percent) were more likely than Hispanics (58.7 percent), Asians (58.0 percent), and Whites (57.9 percent) to participate in the labor force. (See table 3.)

Employment

The employment–population ratio (that is, the proportion of the population that is employed) ranged from 54.0 percent for American Indians and Alaska Natives to 63.5 percent for Native Hawaiians and Other Pacific Islanders. The employment–population ratio was 54.3 percent for Blacks, 57.6 percent for individuals of Two or More Races, 59.7 percent for Whites, 60.4 percent for Asians, and 61.2 percent for Hispanics. (See tables 1, 2, 3, and 5.)

Among adult men (age 20 and older) in the largest race and ethnicity groups, Hispanics (76.0 percent) continued to have the highest employment–population ratio. Blacks (59.7 percent) had the lowest employment–population ratio, continuing a longstanding pattern. The employment–

population ratios for Asian men and White men were 71.9 percent and 68.7 percent, respectively. Among adult women, the employment–population ratios were 55.6 percent for Blacks, 55.4 percent for Asians, 55.1 percent for Whites, and 54.3 percent for Hispanics. (See table 3).

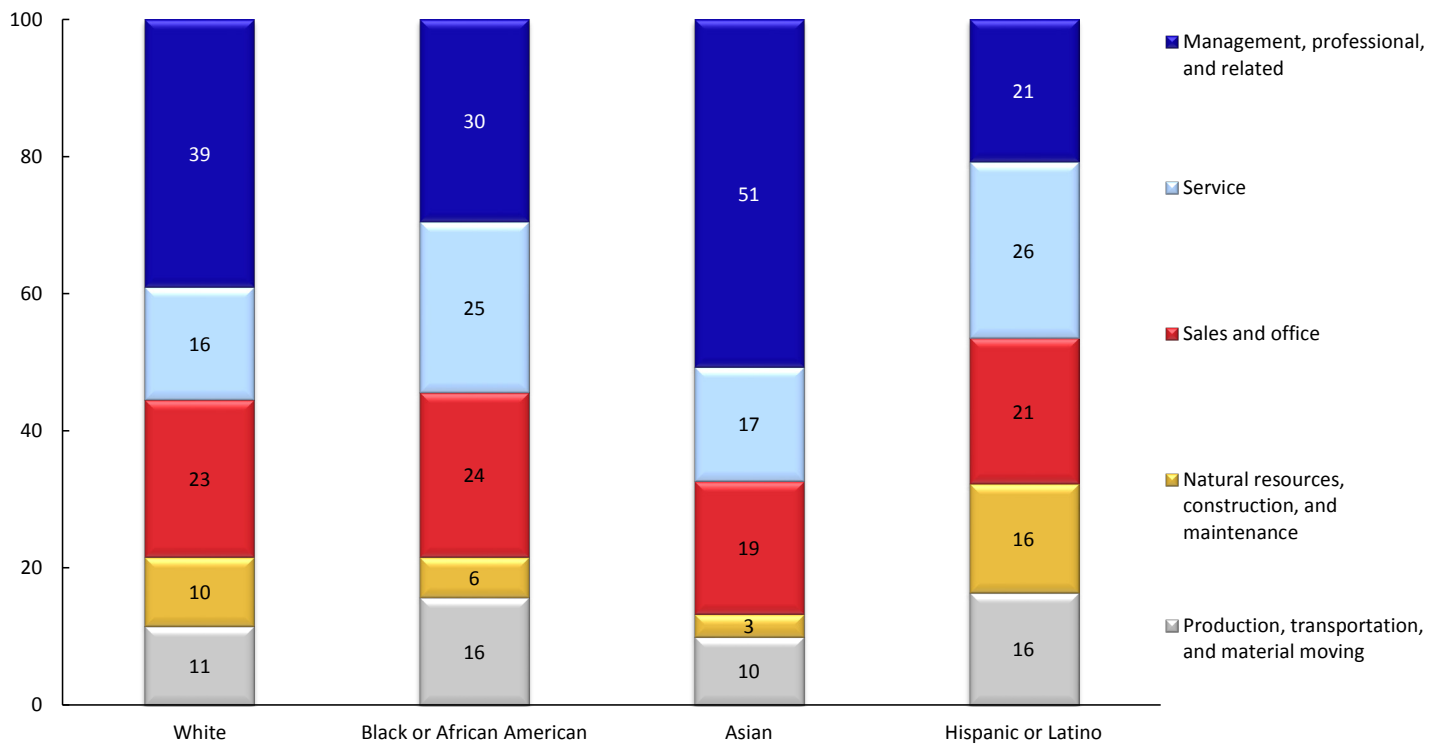
Among teenagers age 16 to 19, the employment–population ratio was higher for Whites than for Hispanics, Asians, or Blacks. The ratio for White teens (29.9 percent) was about 12 percentage points higher than the ratio for Black teens (18.2 percent) and Asian teens (18.1 percent) and about 6 percentage points higher than the ratio for Hispanic teens (23.5 percent).

Educational attainment

Among people age 25 and older, the share of the labor force with at least a high school diploma was over 90 percent for Whites, Blacks, and Asians. By contrast, 72 percent of Hispanics in the labor force had completed high school. Asians were the most likely of the groups to have graduated from college; 60 percent of Asians in the labor force had a bachelor’s degree or higher, compared with 38 percent of Whites, 27 percent of Blacks, and 19 percent of Hispanics. (See table 6 and chart 2.)

Chart 3. Employed people by occupation, race, and Hispanic or Latino ethnicity, 2014 annual averages

Percent of employed



Notes: People whose ethnicity is identified as Hispanic or Latino may be of any race. Data may not sum to 100 percent due to rounding.
Source: Current Population Survey, U.S. Bureau of Labor Statistics.

For all major race and ethnicity groups, higher levels of education are generally associated with a greater likelihood of employment and a lower likelihood of unemployment. Nonetheless, at nearly every level of education, Blacks and Hispanics were more likely to be unemployed than were Whites and Asians. (See table 6.)

Individuals with higher levels of education are typically more likely to be employed in higher-paying jobs—such as those in management, professional, and related occupations—than are individuals with less education. For those age 25 and older, median earnings for all major race and ethnicity groups increased with educational attainment. However, Blacks and Hispanics generally had lower earnings than Whites and Asians at nearly all educational attainment levels. (See table 17.)

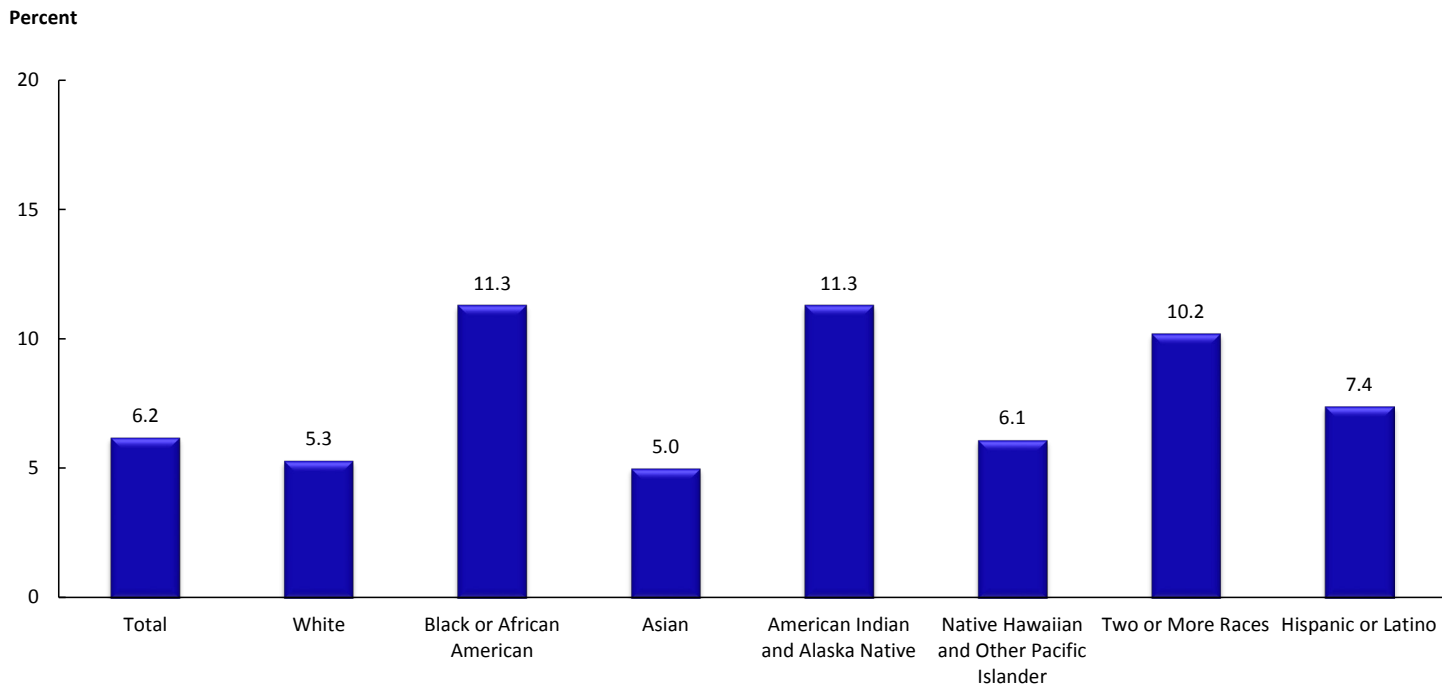
Occupation and industry

Occupational categories. Fifty-one percent of Asians worked in management, professional, and related

occupations—the highest paying major occupational category—compared with 39 percent of employed Whites, 30 percent of employed Blacks, and 21 percent of employed Hispanics. (See table 7 and chart 3.)

Among employed men, 53 percent of Asians worked in management, professional, and related occupations, compared with 36 percent of Whites, 24 percent of Blacks, and 17 percent of Hispanics. About 2 in 10 employed Black and Hispanic men were employed in service occupations, whereas about 1 in 10 employed Asian and White men worked in these occupations. Employed Black and Hispanic men were also more likely than White and Asian men to work in production, transportation, and material moving occupations. Twenty-six percent of employed Hispanic men worked in natural resources, construction, and maintenance occupations, compared with 18 percent of White men, 12 percent of Black men, and 6 percent of Asian men.

Chart 4. Unemployment rates by race and Hispanic or Latino ethnicity, 2014 annual averages



Note: People whose ethnicity is identified as Hispanic or Latino may be of any race.
 Source: Current Population Survey, U.S. Bureau of Labor Statistics.

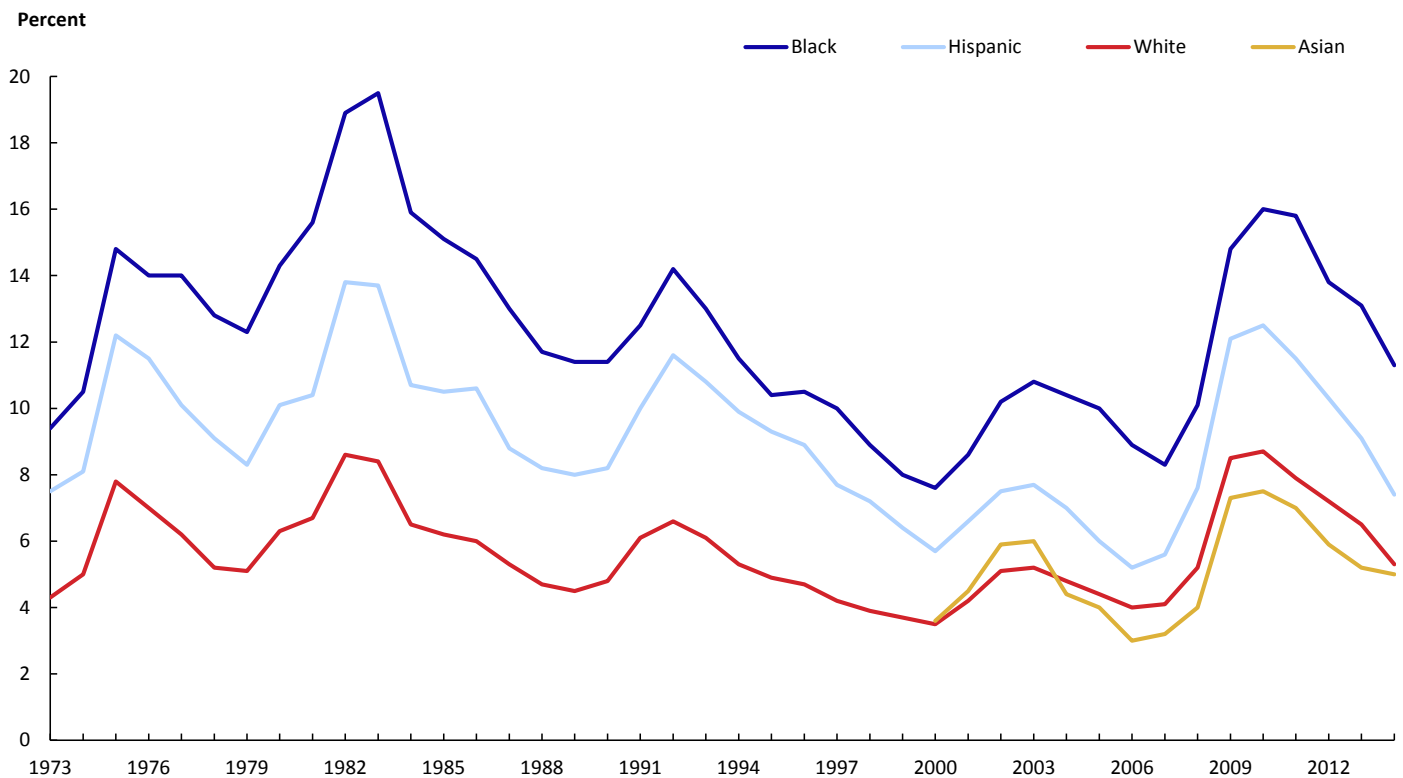
Employed Asian and White women were more likely than other employed women to work in management, professional, and related occupations—49 percent of Asian women and 43 percent of White women, compared with 35 percent of Black women and 26 percent of Hispanic women. Among employed women, 63 percent of Hispanics worked in two job groups—service occupations and sales and office occupations—compared with 57 percent of Blacks, 51 percent of Whites, and 44 percent of Asians.

Hispanics accounted for 16 percent of total employment but were overrepresented by a substantial amount in several detailed occupational categories, including miscellaneous agricultural workers (49 percent), maids and housekeeping cleaners (44 percent), and grounds maintenance workers (44 percent). Blacks made up 11 percent of all employed workers, but accounted for one-quarter or more of those in several specific occupations, including nursing, psychiatric, and home health aides (36 percent); security guards and gaming surveillance officers (30 percent), and bus drivers (26 percent). Asians accounted for 6 percent of all employed workers but made up a much larger share

of workers in several occupation categories, including miscellaneous personal appearance workers (55 percent), software developers (32 percent), and physicians and surgeons (21 percent). Whites made up 80 percent of all employed people, but accounted for 96 percent of farmers, ranchers, and other agricultural managers; 93 percent of construction managers; and 91 percent of chief executives. (See table 8.)

Industry. Among employed men, Hispanics were more likely to work in the construction industry (19 percent) than were Whites (13 percent), Blacks (7 percent), or Asians (4 percent). Employed Black men were more likely than other employed men to work in transportation and utilities (12 percent). Eighteen percent of employed Asian men worked in professional and business services, higher than the shares of Whites (13 percent), Hispanic (12 percent), and Black men (11 percent). A large share of employed women in all race and ethnicity groups worked in education and health services—Blacks (41 percent), Whites (35 percent), Asians (31 percent), and Hispanics (29 percent). (See table 9.)

Chart 5. Unemployment rates by race and Hispanic or Latino ethnicity, 1973–2014 annual averages



Notes: People whose ethnicity is identified as Hispanic or Latino may be of any race. Data for Asians only available since 2000. Source: Current Population Survey, U.S. Bureau of Labor Statistics.

Families and mothers

Among Asian families, 89 percent had an employed family member, compared with 86 percent of Hispanic families and 80 percent of White families. Black families were the least likely to have an employed family member (76 percent). (See table 10.)

Women without a spouse present maintained 44 percent of Black families and 26 percent of Hispanic families. Women without a spouse present maintained about 16 percent of White families and 12 percent of Asian families. Among families maintained by women without a spouse present, Asian families were the most likely to have an employed family member (82 percent), while Black families were least likely to have an employed family member (71 percent). Seventy-six percent of Hispanic and White families that were maintained by women had at least one employed family member. In general, families maintained by women without a spouse present are less likely to have

an employed family member than married-couple families and families maintained by men.

Among mothers with children under 18, Black mothers (75.4 percent) were more likely to be in the labor force than White (69.8 percent), Asian (64.3 percent), or Hispanic (62.0 percent) mothers. (See table 11.)

Unemployment and not in the labor force

Unemployment. Jobless rates varied considerably by race and ethnicity. Blacks (11.3 percent), American Indians and Alaska Natives (11.3 percent), and individuals of Two or More Races (10.2 percent) had higher unemployment rates than Asians (5.0 percent), Whites (5.3 percent), and Native Hawaiians and Other Pacific Islanders (6.1 percent). The unemployment rate was 7.4 percent for Hispanics. (See tables 1, 2, 3, and 12 and charts 4 and 5.)

Among the largest race and ethnicity groups, the jobless rates for adult Black men and women (age 20 and older) were 11.3 percent and 9.8 percent, respectively. The unemployment rate for adult Hispanic men was 6.1 percent, and the rate for adult Hispanic women was 7.5 percent. In comparison, the jobless rate for adult White men was 4.9 percent, and the rate for adult White women was 4.8 percent. For adult Asian men and women, the unemployment rates were 5.1 percent and 4.5 percent, respectively. (See table 3.)

Among teenagers, Blacks had the highest unemployment rate—33.0 percent. The unemployment rates for Hispanic, White, and Asian teenagers were 22.5 percent, 17.3 percent, and 14.0 percent, respectively.

Unemployed Blacks and Asians experienced longer periods of unemployment than did Whites and Hispanics. The median duration of unemployment for Blacks and Asians was 19.5 weeks and 16.3 weeks, respectively, compared with 12.9 weeks for Whites and 12.4 weeks for Hispanics. (See table 13.)

Of the 9.6 million unemployed people, 51 percent (4.9 million) were job losers (that is, workers who lost their jobs or who completed temporary jobs). Reentrants to the labor force (29 percent), new entrants (11 percent), and job leavers (9 percent) constituted the balance of unemployed people. Of the total unemployed for each large race and ethnicity group, 53 percent of Whites and 50 percent of Hispanics were job losers, compared with 47 percent of Blacks and 46 percent of Asians. Fifteen percent of unemployed Asians, 13 percent of unemployed Blacks, 13 percent of unemployed Hispanics, and 10 percent of unemployed Whites were new entrants to the labor force. (See table 14.)

Not in the labor force. Blacks made up 12 percent of the civilian labor force, but 23 percent of people marginally attached to the labor force. People marginally attached to the labor force are individuals who were not in the labor force, wanted to work and were available to work, and had looked for a job sometime in the previous 12 months—but not in the 4 weeks preceding the survey. Hispanics and Asians were represented among the marginally attached nearly proportionately to their share of the labor force.

Whites were underrepresented among the marginally attached relative to their share of the labor force—79 percent of the labor force versus 67 percent of the marginally attached. Blacks also made up a high proportion of discouraged workers (26 percent) relative to their share of the labor force. Discouraged workers, a subset of the marginally attached, are people not currently looking for work because they believe no jobs are available for them. (See table 15.)

Earnings

Among the major race and ethnicity groups, Hispanics and Blacks continued to have considerably lower earnings than Whites and Asians. The median usual weekly earnings of full-time wage and salary workers were \$594 for Hispanics and \$639 for Blacks, compared with \$816 for Whites and \$953 for Asians. Among men, the earnings for Whites (\$897), Blacks (\$680), and Hispanics (\$616) were 83 percent, 63 percent, and 57 percent, respectively, of the earnings of Asians (\$1,080). The median earnings of White women (\$734), Black women (\$611), and Hispanic women (\$548) were 87 percent, 73 percent, and 65 percent, respectively, of the earnings of Asian women (\$841). (See table 16.)

Men. The earnings disparity across the major race and ethnicity groups for men holds for nearly all major occupational groups. For example, median usual weekly earnings of Asian men (\$1,516) and White men (\$1,356) working full time in management, professional, and related occupations (the highest paying major occupation group) were well above the earnings of Hispanic men (\$1,107) and Black men (\$1,012) in the same occupation group. (See table 18.)

Women. Median weekly earnings for women by race and ethnicity groups were fairly close across a number of occupations. For example, among women in service occupations, the earnings were \$479 for Asians, \$465 for Blacks, \$458 for Whites, and \$416 for Hispanics. By contrast, in management, professional, and related occupations, the earnings of Asian women were higher than those for women in other race and ethnicity groups.

Statistical Tables

LABOR FORCE CHARACTERISTICS BY RACE AND ETHNICITY, 2014

Table 1. Employment status of the civilian noninstitutional population 16 years and older by gender and race, 2014 annual averages
(Numbers in thousands)

Gender and race	Civilian noninstitutional population	Civilian labor force						Not in labor force
		Total	Percent of population	Employed		Unemployed		
				Total	Percent of population	Total	Percent of labor force	
Total.....	247,947	155,922	62.9	146,305	59.0	9,617	6.2	92,025
Men.....	119,748	82,882	69.2	77,692	64.9	5,190	6.3	36,865
Women.....	128,199	73,039	57.0	68,613	53.5	4,426	6.1	55,159
White.....	195,498	123,327	63.1	116,788	59.7	6,540	5.3	72,170
Men.....	95,513	66,680	69.8	63,108	66.1	3,572	5.4	28,834
Women.....	99,984	56,648	56.7	53,680	53.7	2,968	5.2	43,337
Black or African American.....	30,843	18,873	61.2	16,732	54.3	2,141	11.3	11,970
Men.....	13,997	8,909	63.6	7,818	55.9	1,091	12.2	5,089
Women.....	16,846	9,964	59.2	8,915	52.9	1,050	10.5	6,881
Asian.....	13,785	8,760	63.6	8,325	60.4	436	5.0	5,024
Men.....	6,420	4,648	72.4	4,403	68.6	246	5.3	1,771
Women.....	7,365	4,112	55.8	3,922	53.3	190	4.6	3,253
American Indian and Alaska Native.....	2,633	1,602	60.9	1,421	54.0	181	11.3	1,031
Men.....	1,302	874	67.2	770	59.2	104	11.9	428
Women.....	1,331	728	54.7	651	48.9	77	10.6	603
Native Hawaiian and Other Pacific Islander.....	847	572	67.6	537	63.5	35	6.1	274
Men.....	418	308	73.8	291	69.6	17	5.7	110
Women.....	429	264	61.6	246	57.5	18	6.6	165
Two or More Races.....	4,342	2,787	64.2	2,502	57.6	285	10.2	1,555
Men.....	2,098	1,463	69.7	1,303	62.1	160	10.9	635
Women.....	2,245	1,324	59.0	1,199	53.4	125	9.5	920

Source: Current Population Survey, U.S. Bureau of Labor Statistics.

LABOR FORCE CHARACTERISTICS BY RACE AND ETHNICITY, 2014

Table 2. Employment status of the civilian noninstitutional population 16 years and older by detailed Asian group, and Hispanic or Latino and non-Hispanic or Latino ethnicity, gender, and race, 2014 annual averages
(Numbers in thousands)

Characteristic	Civilian noninstitutional population	Civilian labor force						Not in labor force
		Total	Percent of population	Employed		Unemployed		
				Total	Percent of population	Total	Percent of labor force	
Total.....	247,947	155,922	62.9	146,305	59.0	9,617	6.2	92,025
Men.....	119,748	82,882	69.2	77,692	64.9	5,190	6.3	36,865
Women.....	128,199	73,039	57.0	68,613	53.5	4,426	6.1	55,159
Asian.....	13,785	8,760	63.6	8,325	60.4	436	5.0	5,024
Men.....	6,420	4,648	72.4	4,403	68.6	246	5.3	1,771
Women.....	7,365	4,112	55.8	3,922	53.3	190	4.6	3,253
Asian Indian.....	2,657	1,797	67.6	1,727	65.0	70	3.9	860
Chinese.....	3,069	1,920	62.6	1,821	59.3	100	5.2	1,148
Filipino.....	2,201	1,482	67.4	1,410	64.1	72	4.9	718
Japanese.....	777	434	55.9	424	54.6	10	2.3	343
Korean.....	1,275	770	60.4	724	56.8	46	6.0	504
Vietnamese.....	1,427	892	62.5	844	59.2	48	5.4	535
Other Asian.....	2,379	1,463	61.5	1,374	57.8	89	6.1	916
Hispanic or Latino.....	38,400	25,370	66.1	23,492	61.2	1,878	7.4	13,030
Men.....	19,244	14,651	76.1	13,655	71.0	996	6.8	4,593
Women.....	19,156	10,720	56.0	9,838	51.4	882	8.2	8,437
Mexican.....	23,829	15,768	66.2	14,629	61.4	1,139	7.2	8,061
Men.....	12,150	9,339	76.9	8,741	71.9	598	6.4	2,811
Women.....	11,679	6,429	55.0	5,888	50.4	541	8.4	5,250
Puerto Rican.....	3,515	2,114	60.1	1,891	53.8	224	10.6	1,401
Men.....	1,699	1,140	67.1	1,014	59.7	126	11.0	559
Women.....	1,816	974	53.7	876	48.3	98	10.1	842
Cuban.....	1,659	1,009	60.8	950	57.3	59	5.8	650
Men.....	828	561	67.7	533	64.4	28	4.9	268
Women.....	830	448	53.9	417	50.2	31	6.9	383
Central American.....	3,579	2,628	73.4	2,448	68.4	180	6.9	951
Men.....	1,886	1,615	85.6	1,509	80.0	106	6.6	272
Women.....	1,693	1,014	59.9	940	55.5	74	7.3	679
Salvadoran.....	1,438	1,075	74.8	1,005	69.9	71	6.6	363
Men.....	712	611	85.8	571	80.2	40	6.5	101
Women.....	727	465	64.0	434	59.8	31	6.6	262
Other Central American ¹	2,141	1,553	72.5	1,443	67.4	110	7.1	588
Men.....	1,175	1,004	85.5	938	79.8	66	6.6	171
Women.....	966	549	56.8	506	52.3	44	7.9	417
South American.....	2,393	1,672	69.9	1,567	65.5	106	6.3	721
Men.....	1,109	873	78.7	825	74.4	48	5.5	236
Women.....	1,284	799	62.2	741	57.7	58	7.2	485
Other Hispanic or Latino.....	3,425	2,179	63.6	2,008	58.6	171	7.9	1,246
Men.....	1,571	1,123	71.5	1,032	65.7	91	8.1	448
Women.....	1,854	1,056	56.9	976	52.6	80	7.6	798
Dominican.....	1,379	896	65.0	818	59.4	78	8.7	482
Men.....	587	420	71.5	381	65.0	39	9.2	167
Women.....	792	476	60.2	437	55.2	39	8.3	315
Other Hispanic or Latino ²	2,047	1,283	62.7	1,189	58.1	93	7.3	764
Men.....	984	704	71.5	651	66.1	53	7.5	281
Women.....	1,062	579	54.5	539	50.7	41	7.0	483

See footnotes at end of table.

LABOR FORCE CHARACTERISTICS BY RACE AND ETHNICITY, 2014

Table 2. Employment status of the civilian noninstitutional population 16 years and older by detailed Asian group, and Hispanic or Latino and non-Hispanic or Latino ethnicity, gender, and race, 2014 annual averages—Continued

(Numbers in thousands)

Characteristic	Civilian noninstitutional population	Civilian labor force						Not in labor force
		Total	Percent of population	Employed		Unemployed		
				Total	Percent of population	Total	Percent of labor force	
Hispanic or Latino.....	38,400	25,370	66.1	23,492	61.2	1,878	7.4	13,030
Men.....	19,244	14,651	76.1	13,655	71.0	996	6.8	4,593
Women.....	19,156	10,720	56.0	9,838	51.4	882	8.2	8,437
White Hispanic or Latino.....	34,305	22,666	66.1	21,042	61.3	1,624	7.2	11,638
Men.....	17,236	13,165	76.4	12,308	71.4	857	6.5	4,072
Women.....	17,068	9,501	55.7	8,734	51.2	767	8.1	7,567
Black Hispanic or Latino.....	1,756	1,131	64.4	1,018	58.0	113	10.0	625
Men.....	789	560	71.0	503	63.8	57	10.2	230
Women.....	967	571	59.0	516	53.4	56	9.8	395
Asian Hispanic or Latino.....	317	224	70.7	206	65.0	19	8.5	92
Men.....	163	120	73.6	113	69.3	8	6.7	42
Women.....	154	104	67.5	93	60.4	11	10.6	50
Non-Hispanic or Latino.....	209,546	130,552	62.3	122,813	58.6	7,739	5.9	78,995
Men.....	100,504	68,232	67.9	64,038	63.7	4,194	6.1	32,272
Women.....	109,042	62,320	57.2	58,775	53.9	3,545	5.7	46,723
White non-Hispanic or Latino.....	161,193	100,661	62.4	95,746	59.4	4,916	4.9	60,532
Men.....	78,277	53,515	68.4	50,800	64.9	2,715	5.1	24,762
Women.....	82,916	47,147	56.9	44,946	54.2	2,201	4.7	35,770
Black non-Hispanic or Latino.....	29,087	17,742	61.0	15,714	54.0	2,028	11.4	11,345
Men.....	13,208	8,349	63.2	7,315	55.4	1,034	12.4	4,859
Women.....	15,879	9,393	59.2	8,399	52.9	994	10.6	6,486
Asian non-Hispanic or Latino.....	13,468	8,536	63.4	8,119	60.3	417	4.9	4,932
Men.....	6,257	4,528	72.4	4,290	68.6	238	5.3	1,729
Women.....	7,211	4,008	55.6	3,829	53.1	179	4.5	3,203

¹ Excludes Salvadoran

² Excludes Dominican

Note: Estimates for the above race groups (White non-Hispanic, Black non-Hispanic, and Asian non-Hispanic) do not sum to totals because data are not presented for all races. People whose ethnicity is identified as Hispanic or Latino may be of any race.

Source: Current Population Survey, U.S. Bureau of Labor Statistics.

LABOR FORCE CHARACTERISTICS BY RACE AND ETHNICITY, 2014

Table 3. Employment status of the civilian noninstitutional population by gender, age, race, and Hispanic or Latino ethnicity, 2014 annual averages
(Numbers in thousands)

Age, gender, race, and Hispanic or Latino ethnicity	Civilian noninstitutional population	Civilian labor force						Not in labor force
		Total	Percent of population	Employed		Unemployed		
				Total	Percent of population	Total	Percent of labor force	
Total								
Total, 16 years and older.....	247,947	155,922	62.9	146,305	59.0	9,617	6.2	92,025
16 to 19 years.....	16,633	5,654	34.0	4,548	27.3	1,106	19.6	10,979
20 years and older.....	231,314	150,268	65.0	141,757	61.3	8,511	5.7	81,045
20 to 24 years.....	22,079	15,641	70.8	13,894	62.9	1,747	11.2	6,438
25 to 54 years.....	124,511	100,767	80.9	95,497	76.7	5,270	5.2	23,744
55 to 64 years.....	39,764	25,502	64.1	24,395	61.4	1,107	4.3	14,262
65 years and older.....	44,959	8,358	18.6	7,971	17.7	387	4.6	36,602
Men, 16 years and older.....	119,748	82,882	69.2	77,692	64.9	5,190	6.3	36,865
16 to 19 years.....	8,449	2,827	33.5	2,222	26.3	605	21.4	5,622
20 years and older.....	111,299	80,056	71.9	75,471	67.8	4,585	5.7	31,243
20 to 24 years.....	11,067	8,182	73.9	7,187	64.9	996	12.2	2,885
25 to 54 years.....	61,149	53,925	88.2	51,146	83.6	2,779	5.2	7,224
55 to 64 years.....	19,116	13,361	69.9	12,762	66.8	600	4.5	5,755
65 years and older.....	19,967	4,587	23.0	4,377	21.9	210	4.6	15,380
Women, 16 years and older.....	128,199	73,039	57.0	68,613	53.5	4,426	6.1	55,159
16 to 19 years.....	8,184	2,827	34.5	2,326	28.4	501	17.7	5,357
20 years and older.....	120,014	70,212	58.5	66,287	55.2	3,926	5.6	49,802
20 to 24 years.....	11,012	7,459	67.7	6,707	60.9	751	10.1	3,554
25 to 54 years.....	63,362	46,842	73.9	44,351	70.0	2,490	5.3	16,520
55 to 64 years.....	20,648	12,141	58.8	11,634	56.3	507	4.2	8,507
65 years and older.....	24,992	3,771	15.1	3,594	14.4	177	4.7	21,221
White								
Total, 16 years and older.....	195,498	123,327	63.1	116,788	59.7	6,540	5.3	72,170
16 to 19 years.....	12,377	4,476	36.2	3,701	29.9	775	17.3	7,901
20 years and older.....	183,121	118,851	64.9	113,087	61.8	5,764	4.9	64,269
20 to 24 years.....	16,329	11,927	73.0	10,842	66.4	1,084	9.1	4,402
25 to 54 years.....	95,984	78,537	81.8	74,992	78.1	3,545	4.5	17,447
55 to 64 years.....	32,450	21,181	65.3	20,351	62.7	829	3.9	11,270
65 years and older.....	38,358	7,207	18.8	6,902	18.0	305	4.2	31,150
Men, 16 years and older.....	95,513	66,680	69.8	63,108	66.1	3,572	5.4	28,834
16 to 19 years.....	6,321	2,250	35.6	1,819	28.8	431	19.2	4,071
20 years and older.....	89,193	64,430	72.2	61,289	68.7	3,141	4.9	24,763
20 to 24 years.....	8,250	6,309	76.5	5,681	68.9	628	9.9	1,941
25 to 54 years.....	47,925	42,845	89.4	40,945	85.4	1,900	4.4	5,080
55 to 64 years.....	15,794	11,266	71.3	10,817	68.5	449	4.0	4,528
65 years and older.....	17,224	4,011	23.3	3,847	22.3	164	4.1	13,213
Women, 16 years and older.....	99,984	56,648	56.7	53,680	53.7	2,968	5.2	43,337
16 to 19 years.....	6,056	2,226	36.8	1,882	31.1	344	15.5	3,830
20 years and older.....	93,928	54,421	57.9	51,798	55.1	2,623	4.8	39,507
20 to 24 years.....	8,079	5,618	69.5	5,161	63.9	457	8.1	2,461
25 to 54 years.....	48,059	35,692	74.3	34,047	70.8	1,645	4.6	12,367
55 to 64 years.....	16,656	9,915	59.5	9,535	57.2	380	3.8	6,741
65 years and older.....	21,134	3,196	15.1	3,055	14.5	141	4.4	17,937

See note at end of table.

LABOR FORCE CHARACTERISTICS BY RACE AND ETHNICITY, 2014

Table 3. Employment status of the civilian noninstitutional population by gender, age, race, and Hispanic or Latino ethnicity, 2014 annual averages—Continued
(Numbers in thousands)

Age, gender, race, and Hispanic or Latino ethnicity	Civilian noninstitutional population	Civilian labor force						Not in labor force
		Total	Percent of population	Employed		Unemployed		
				Total	Percent of population	Total	Percent of labor force	
Black or African American								
Total, 16 years and older.....	30,843	18,873	61.2	16,732	54.3	2,141	11.3	11,970
16 to 19 years.....	2,508	681	27.2	456	18.2	225	33.0	1,827
20 years and older.....	28,335	18,192	64.2	16,276	57.4	1,916	10.5	10,143
20 to 24 years.....	3,460	2,305	66.6	1,839	53.2	466	20.2	1,155
25 to 54 years.....	16,287	12,712	78.1	11,498	70.6	1,214	9.5	3,575
55 to 64 years.....	4,573	2,528	55.3	2,342	51.2	186	7.3	2,045
65 years and older.....	4,015	648	16.1	596	14.9	51	7.9	3,367
Men, 16 years and older.....	13,997	8,909	63.6	7,818	55.9	1,091	12.2	5,089
16 to 19 years.....	1,246	323	25.9	205	16.4	118	36.5	923
20 years and older.....	12,751	8,586	67.3	7,613	59.7	973	11.3	4,165
20 to 24 years.....	1,675	1,138	67.9	887	52.9	251	22.1	537
25 to 54 years.....	7,401	5,975	80.7	5,373	72.6	602	10.1	1,426
55 to 64 years.....	2,062	1,176	57.0	1,081	52.4	95	8.0	886
65 years and older.....	1,613	297	18.4	272	16.9	25	8.5	1,316
Women, 16 years and older.....	16,846	9,964	59.2	8,915	52.9	1,050	10.5	6,881
16 to 19 years.....	1,262	358	28.4	252	19.9	106	29.7	904
20 years and older.....	15,584	9,606	61.6	8,663	55.6	943	9.8	5,978
20 to 24 years.....	1,785	1,167	65.4	952	53.3	215	18.4	618
25 to 54 years.....	8,886	6,737	75.8	6,126	68.9	611	9.1	2,149
55 to 64 years.....	2,511	1,352	53.8	1,261	50.2	91	6.7	1,159
65 years and older.....	2,402	351	14.6	325	13.5	26	7.4	2,052
Asian								
Total, 16 years and older.....	13,785	8,760	63.6	8,325	60.4	436	5.0	5,024
16 to 19 years.....	821	173	21.0	149	18.1	24	14.0	648
20 years and older.....	12,963	8,587	66.2	8,176	63.1	411	4.8	4,376
20 to 24 years.....	1,222	664	54.3	587	48.0	76	11.5	559
25 to 54 years.....	8,001	6,270	78.4	6,015	75.2	255	4.1	1,731
55 to 64 years.....	1,878	1,293	68.9	1,232	65.6	61	4.7	584
65 years and older.....	1,862	361	19.4	342	18.4	19	5.2	1,501
Men, 16 years and older.....	6,420	4,648	72.4	4,403	68.6	246	5.3	1,771
16 to 19 years.....	397	85	21.3	70	17.6	15	17.6	312
20 years and older.....	6,023	4,564	75.8	4,333	71.9	231	5.1	1,459
20 to 24 years.....	627	356	56.8	310	49.4	47	13.1	271
25 to 54 years.....	3,744	3,342	89.3	3,208	85.7	134	4.0	401
55 to 64 years.....	846	663	78.4	625	73.9	38	5.8	183
65 years and older.....	807	202	25.1	190	23.6	12	5.9	605
Women, 16 years and older.....	7,365	4,112	55.8	3,922	53.3	190	4.6	3,253
16 to 19 years.....	424	88	20.8	79	18.6	9	10.5	336
20 years and older.....	6,940	4,024	58.0	3,843	55.4	180	4.5	2,917
20 to 24 years.....	595	307	51.6	277	46.6	30	9.7	288
25 to 54 years.....	4,257	2,927	68.8	2,807	65.9	121	4.1	1,330
55 to 64 years.....	1,032	630	61.1	607	58.8	23	3.6	402
65 years and older.....	1,056	159	15.0	152	14.4	7	4.4	897

See note at end of table.

LABOR FORCE CHARACTERISTICS BY RACE AND ETHNICITY, 2014

Table 3. Employment status of the civilian noninstitutional population by gender, age, race, and Hispanic or Latino ethnicity, 2014 annual averages—Continued
(Numbers in thousands)

Age, gender, race, and Hispanic or Latino ethnicity	Civilian noninstitutional population	Civilian labor force						Not in labor force
		Total	Percent of population	Employed		Unemployed		
				Total	Percent of population	Total	Percent of labor force	
Hispanic or Latino ethnicity								
Total, 16 years and older.....	38,400	25,370	66.1	23,492	61.2	1,878	7.4	13,030
16 to 19 years.....	3,662	1,109	30.3	859	23.5	250	22.5	2,553
20 years and older.....	34,738	24,261	69.8	22,633	65.2	1,628	6.7	10,477
20 to 24 years.....	4,642	3,315	71.4	2,947	63.5	368	11.1	1,327
25 to 54 years.....	22,639	17,895	79.0	16,816	74.3	1,079	6.0	4,744
55 to 64 years.....	3,989	2,460	61.7	2,313	58.0	147	6.0	1,529
65 years and older.....	3,467	591	17.0	557	16.1	33	5.7	2,876
Men, 16 years and older.....	19,244	14,651	76.1	13,655	71.0	996	6.8	4,593
16 to 19 years.....	1,873	584	31.2	453	24.2	132	22.5	1,288
20 years and older.....	17,371	14,066	81.0	13,202	76.0	864	6.1	3,305
20 to 24 years.....	2,389	1,862	77.9	1,655	69.3	207	11.1	527
25 to 54 years.....	11,563	10,476	90.6	9,922	85.8	554	5.3	1,087
55 to 64 years.....	1,920	1,399	72.9	1,317	68.6	82	5.9	521
65 years and older.....	1,499	329	21.9	307	20.5	22	6.6	1,170
Women, 16 years and older.....	19,156	10,720	56.0	9,838	51.4	882	8.2	8,437
16 to 19 years.....	1,790	525	29.3	407	22.7	118	22.5	1,265
20 years and older.....	17,367	10,195	58.7	9,431	54.3	764	7.5	7,172
20 to 24 years.....	2,253	1,453	64.5	1,291	57.3	162	11.1	800
25 to 54 years.....	11,076	7,418	67.0	6,893	62.2	525	7.1	3,658
55 to 64 years.....	2,070	1,061	51.3	997	48.2	65	6.1	1,008
65 years and older.....	1,968	262	13.3	250	12.7	12	4.5	1,706

Note: Estimates for the above race groups (White, Black or African American, and Asian) do not sum to totals because data are not presented for all races. People whose ethnicity is identified as Hispanic or Latino may be of any race.

Source: Current Population Survey, U.S. Bureau of Labor Statistics.

LABOR FORCE CHARACTERISTICS BY RACE AND ETHNICITY, 2014

Table 4. Labor force participation rates by gender, race, and Hispanic or Latino ethnicity, 1972–2014 annual averages
(Percent)

Year	Total			White			Black or African American			Asian			Hispanic or Latino ethnicity		
	Total	Men	Women	Total	Men	Women	Total	Men	Women	Total	Men	Women	Total	Men	Women
1972.....	60.4	78.9	43.9	60.4	79.6	43.2	59.9	73.6	48.7	—	—	—	—	—	—
1973.....	60.8	78.8	44.7	60.8	79.4	44.1	60.2	73.4	49.3	—	—	—	60.2	81.5	41.0
1974.....	61.3	78.7	45.7	61.4	79.4	45.2	59.8	72.9	49.0	—	—	—	61.1	81.7	42.4
1975.....	61.2	77.9	46.3	61.5	78.7	45.9	58.8	70.9	48.8	—	—	—	60.8	80.7	43.2
1976.....	61.6	77.5	47.3	61.8	78.4	46.9	59.0	70.0	49.8	—	—	—	60.8	79.6	44.3
1977.....	62.3	77.7	48.4	62.5	78.5	48.0	59.8	70.6	50.8	—	—	—	61.6	80.9	44.3
1978.....	63.2	77.9	50.0	63.3	78.6	49.4	61.5	71.5	53.1	—	—	—	62.9	81.1	46.6
1979.....	63.7	77.8	50.9	63.9	78.6	50.5	61.4	71.3	53.1	—	—	—	63.6	81.3	47.4
1980.....	63.8	77.4	51.5	64.1	78.2	51.2	61.0	70.3	53.1	—	—	—	64.0	81.4	47.4
1981.....	63.9	77.0	52.1	64.3	77.9	51.9	60.8	70.0	53.5	—	—	—	64.1	80.6	48.3
1982.....	64.0	76.6	52.6	64.3	77.4	52.4	61.0	70.1	53.7	—	—	—	63.6	79.7	48.1
1983.....	64.0	76.4	52.9	64.3	77.1	52.7	61.5	70.6	54.2	—	—	—	63.8	80.3	47.7
1984.....	64.4	76.4	53.6	64.6	77.1	53.3	62.2	70.8	55.2	—	—	—	64.9	80.6	49.7
1985.....	64.8	76.3	54.5	65.0	77.0	54.1	62.9	70.8	56.5	—	—	—	64.6	80.4	49.3
1986.....	65.3	76.3	55.3	65.5	76.9	55.0	63.3	71.2	56.9	—	—	—	65.4	81.0	50.1
1987.....	65.6	76.2	56.0	65.8	76.8	55.7	63.8	71.1	58.0	—	—	—	66.4	81.0	52.0
1988.....	65.9	76.2	56.6	66.2	76.9	56.4	63.8	71.0	58.0	—	—	—	67.4	81.9	53.2
1989.....	66.5	76.4	57.4	66.7	77.1	57.2	64.2	71.0	58.7	—	—	—	67.6	82.0	53.5
1990.....	66.5	76.4	57.5	66.9	77.1	57.4	64.0	71.0	58.3	—	—	—	67.4	81.4	53.1
1991.....	66.2	75.8	57.4	66.6	76.5	57.4	63.3	70.4	57.5	—	—	—	66.5	80.3	52.4
1992.....	66.4	75.8	57.8	66.8	76.5	57.7	63.9	70.7	58.5	—	—	—	66.8	80.7	52.8
1993.....	66.3	75.4	57.9	66.8	76.2	58.0	63.2	69.6	57.9	—	—	—	66.2	80.2	52.1
1994.....	66.6	75.1	58.8	67.1	75.9	58.9	63.4	69.1	58.7	—	—	—	66.1	79.2	52.9
1995.....	66.6	75.0	58.9	67.1	75.7	59.0	63.7	69.0	59.5	—	—	—	65.8	79.1	52.6
1996.....	66.8	74.9	59.3	67.2	75.8	59.1	64.1	68.7	60.4	—	—	—	66.5	79.6	53.4
1997.....	67.1	75.0	59.8	67.5	75.9	59.5	64.7	68.3	61.7	—	—	—	67.9	80.1	55.1
1998.....	67.1	74.9	59.8	67.3	75.6	59.4	65.6	69.0	62.8	—	—	—	67.9	79.8	55.6
1999.....	67.1	74.7	60.0	67.3	75.6	59.6	65.8	68.7	63.5	—	—	—	67.7	79.8	55.9
2000.....	67.1	74.8	59.9	67.3	75.5	59.5	65.8	69.2	63.1	67.2	76.1	59.2	69.7	81.5	57.5
2001.....	66.8	74.4	59.8	67.0	75.1	59.4	65.3	68.4	62.8	67.2	76.2	59.0	69.5	81.0	57.6
2002.....	66.6	74.1	59.6	66.8	74.8	59.3	64.8	68.4	61.8	67.2	75.9	59.1	69.1	80.2	57.6
2003.....	66.2	73.5	59.5	66.5	74.2	59.2	64.3	67.3	61.9	66.4	75.6	58.3	68.3	80.1	55.9
2004.....	66.0	73.3	59.2	66.3	74.1	58.9	63.8	66.7	61.5	65.9	75.0	57.6	68.6	80.4	56.1
2005.....	66.0	73.3	59.3	66.3	74.1	58.9	64.2	67.3	61.6	66.1	74.8	58.2	68.0	80.1	55.3
2006.....	66.2	73.5	59.4	66.5	74.3	59.0	64.1	67.0	61.7	66.2	75.0	58.3	68.7	80.7	56.1
2007.....	66.0	73.2	59.3	66.4	74.0	59.0	63.7	66.8	61.1	66.5	75.1	58.6	68.8	80.5	56.5
2008.....	66.0	73.0	59.5	66.3	73.7	59.2	63.7	66.7	61.3	67.0	75.3	59.4	68.5	80.2	56.2
2009.....	65.4	72.0	59.2	65.8	72.8	59.1	62.4	65.0	60.3	66.0	74.6	58.2	68.0	78.8	56.5
2010.....	64.7	71.2	58.6	65.1	72.0	58.5	62.2	65.0	59.9	64.7	73.2	57.0	67.5	77.8	56.5
2011.....	64.1	70.5	58.1	64.5	71.3	58.0	61.4	64.2	59.1	64.6	73.2	56.8	66.5	76.5	55.9
2012.....	63.7	70.2	57.7	64.0	71.0	57.4	61.5	63.6	59.8	63.9	72.2	56.5	66.4	76.1	56.6
2013.....	63.2	69.7	57.2	63.5	70.5	56.9	61.2	63.5	59.2	64.6	73.0	57.1	66.0	76.3	55.7
2014.....	62.9	69.2	57.0	63.1	69.8	56.7	61.2	63.6	59.2	63.6	72.4	55.8	66.1	76.1	56.0

See note at end of table.

Table 4. Labor force participation rates by gender, race, and Hispanic or Latino ethnicity, 1972–2014 annual averages—Continued
(Percent)

Year	American Indian and Alaska Native			Native Hawaiian and Other Pacific Islander			Two or More Races		
	Total	Men	Women	Total	Men	Women	Total	Men	Women
2003.....	64.4	71.0	58.0	68.9	75.0	63.9	67.6	73.2	62.4
2004.....	63.8	70.9	57.1	71.8	76.6	67.7	67.0	74.0	60.3
2005.....	63.5	70.0	57.2	73.4	77.1	69.8	67.0	72.0	62.3
2006.....	63.1	68.6	57.9	74.5	80.8	68.6	65.9	72.3	59.7
2007.....	63.3	69.9	57.0	73.0	78.4	68.2	66.3	71.9	60.8
2008.....	63.7	70.2	57.6	72.5	78.9	66.6	65.5	70.7	60.4
2009.....	59.0	64.1	54.2	69.4	77.3	62.3	65.6	70.4	61.0
2010.....	57.7	64.0	51.8	68.4	71.3	65.5	65.4	70.9	60.3
2011.....	59.2	65.2	53.2	69.4	75.6	63.6	64.0	68.9	59.5
2012.....	59.3	66.4	52.6	71.4	73.9	69.1	65.3	70.4	60.5
2013.....	59.2	65.3	53.3	70.0	73.7	66.6	63.3	69.2	57.8
2014.....	60.9	67.2	54.7	67.6	73.8	61.6	64.2	69.7	59.0

Note: Beginning in 2003, estimates for White, Black or African American, Asian, American Indian and Alaska Native, and Native Hawaiian and Other Pacific Islander race groups include people who selected that race group only; people who selected more than one race group are included in the Two or More Races category. Prior to 2003, people who reported more than one race were included in the group they identified as the main race. Asian estimates for 2000–2002 are for Asians and Pacific Islanders; beginning in 2003, Asian is a separate category, as is Native Hawaiian and Other Pacific Islander. People whose ethnicity is identified as Hispanic or Latino may be of any race. Dash indicates data not available.

Source: Current Population Survey, U.S. Bureau of Labor Statistics.

LABOR FORCE CHARACTERISTICS BY RACE AND ETHNICITY, 2014

Table 5. Employment–population ratios by gender, race, and Hispanic or Latino ethnicity, 1972–2014 annual averages
(Percent)

Year	Total			White			Black or African American			Asian			Hispanic or Latino ethnicity		
	Total	Men	Women	Total	Men	Women	Total	Men	Women	Total	Men	Women	Total	Men	Women
1972.....	57.0	75.0	41.0	57.4	76.0	40.7	53.7	66.8	43.0	—	—	—	—	—	—
1973.....	57.8	75.5	42.0	58.2	76.5	41.8	54.5	67.5	43.8	—	—	—	55.6	76.0	37.3
1974.....	57.8	74.9	42.6	58.3	75.9	42.4	53.5	65.8	43.5	—	—	—	56.2	75.7	38.4
1975.....	56.1	71.7	42.0	56.7	73.0	42.0	50.1	60.6	41.6	—	—	—	53.4	71.5	37.4
1976.....	56.8	72.0	43.2	57.5	73.4	43.2	50.8	60.6	42.8	—	—	—	53.8	71.1	38.6
1977.....	57.9	72.8	44.5	58.6	74.1	44.5	51.4	61.4	43.3	—	—	—	55.4	73.6	39.1
1978.....	59.3	73.8	46.4	60.0	75.0	46.3	53.6	63.3	45.8	—	—	—	57.2	74.9	41.3
1979.....	59.9	73.8	47.5	60.6	75.1	47.5	53.8	63.4	46.0	—	—	—	58.3	75.6	42.5
1980.....	59.2	72.0	47.7	60.0	73.4	47.8	52.3	60.4	45.7	—	—	—	57.6	73.5	42.4
1981.....	59.0	71.3	48.0	60.0	72.8	48.3	51.3	59.1	45.1	—	—	—	57.4	72.4	43.0
1982.....	57.8	69.0	47.7	58.8	70.6	48.1	49.4	56.0	44.2	—	—	—	54.9	68.9	41.3
1983.....	57.9	68.8	48.0	58.9	70.4	48.5	49.5	56.3	44.1	—	—	—	55.1	69.4	41.1
1984.....	59.5	70.7	49.5	60.5	72.1	49.8	52.3	59.2	46.7	—	—	—	57.9	72.1	44.2
1985.....	60.1	70.9	50.4	61.0	72.3	50.7	53.4	60.0	48.1	—	—	—	57.8	72.1	43.8
1986.....	60.7	71.0	51.4	61.5	72.3	51.7	54.1	60.6	48.8	—	—	—	58.5	72.5	44.7
1987.....	61.5	71.5	52.5	62.3	72.7	52.8	55.6	62.0	50.3	—	—	—	60.5	74.0	47.4
1988.....	62.3	72.0	53.4	63.1	73.2	53.8	56.3	62.7	51.2	—	—	—	61.9	75.3	48.8
1989.....	63.0	72.5	54.3	63.8	73.7	54.6	56.9	62.8	52.0	—	—	—	62.2	75.8	48.8
1990.....	62.8	72.0	54.3	63.7	73.3	54.7	56.7	62.6	51.9	—	—	—	61.9	74.9	48.6
1991.....	61.7	70.4	53.7	62.6	71.6	54.2	55.4	61.3	50.6	—	—	—	59.8	72.1	47.3
1992.....	61.5	69.8	53.8	62.4	71.1	54.2	54.9	59.9	50.8	—	—	—	59.1	71.2	46.8
1993.....	61.7	70.0	54.1	62.7	71.4	54.6	55.0	60.0	50.9	—	—	—	59.1	71.7	46.3
1994.....	62.5	70.4	55.3	63.5	71.8	55.8	56.1	60.8	52.3	—	—	—	59.5	71.7	47.2
1995.....	62.9	70.8	55.6	63.8	72.0	56.1	57.1	61.7	53.4	—	—	—	59.7	72.1	47.3
1996.....	63.2	70.9	56.0	64.1	72.3	56.3	57.4	61.1	54.4	—	—	—	60.6	73.3	47.9
1997.....	63.8	71.3	56.8	64.6	72.7	57.0	58.2	61.4	55.6	—	—	—	62.6	74.5	50.2
1998.....	64.1	71.6	57.1	64.7	72.7	57.1	59.7	62.9	57.2	—	—	—	63.1	74.7	51.0
1999.....	64.3	71.6	57.4	64.8	72.8	57.3	60.6	63.1	58.6	—	—	—	63.4	75.3	51.7
2000.....	64.4	71.9	57.5	64.9	73.0	57.4	60.9	63.6	58.6	64.8	73.3	57.1	65.7	77.4	53.6
2001.....	63.7	70.9	57.0	64.2	72.0	57.0	59.7	62.1	57.8	64.2	72.7	56.4	64.9	76.2	53.3
2002.....	62.7	69.7	56.3	63.4	70.8	56.4	58.1	61.1	55.8	63.2	71.3	55.8	63.9	74.5	52.9
2003.....	62.3	68.9	56.1	63.0	70.1	56.3	57.4	59.5	55.6	62.4	70.9	54.9	63.1	74.3	51.2
2004.....	62.3	69.2	56.0	63.1	70.4	56.1	57.2	59.3	55.5	63.0	71.6	55.1	63.8	75.1	51.8
2005.....	62.7	69.6	56.2	63.4	70.8	56.3	57.7	60.2	55.7	63.4	71.8	55.9	64.0	75.8	51.5
2006.....	63.1	70.1	56.6	63.8	71.3	56.6	58.4	60.6	56.5	64.2	72.7	56.5	65.2	76.8	52.8
2007.....	63.0	69.8	56.6	63.6	70.9	56.7	58.4	60.7	56.5	64.3	72.8	56.6	64.9	76.2	53.0
2008.....	62.2	68.5	56.2	62.8	69.7	56.3	57.3	59.1	55.8	64.3	72.2	57.2	63.3	74.1	51.9
2009.....	59.3	64.5	54.4	60.2	66.0	54.8	53.2	53.7	52.8	61.2	68.7	54.4	59.7	68.9	50.1
2010.....	58.5	63.7	53.6	59.4	65.1	54.0	52.3	53.1	51.7	59.9	67.5	53.0	59.0	68.0	49.6
2011.....	58.4	63.9	53.2	59.4	65.3	53.7	51.7	52.8	50.8	60.0	68.2	52.6	58.9	67.9	49.3
2012.....	58.6	64.4	53.1	59.4	65.8	53.3	53.0	54.1	52.2	60.1	68.1	53.1	59.5	68.6	50.4
2013.....	58.6	64.4	53.2	59.4	65.7	53.3	53.2	54.5	52.0	61.2	69.0	54.3	60.0	69.6	50.4
2014.....	59.0	64.9	53.5	59.7	66.1	53.7	54.3	55.9	52.9	60.4	68.6	53.3	61.2	71.0	51.4

See note at end of table.

Table 5. Employment-population ratio by gender, race, and Hispanic or Latino ethnicity, 1972–2014 annual averages
—Continued
 (Percent)

Year	American Indian and Alaska Native			Native Hawaiian and Other Pacific Islander			Two or More Races		
	Total	Men	Women	Total	Men	Women	Total	Men	Women
2003.....	57.7	63.1	52.4	63.6	69.8	58.4	61.4	66.4	56.8
2004.....	57.7	64.0	51.8	67.4	71.4	64.1	61.2	67.6	55.0
2005.....	57.6	63.9	51.5	70.2	73.4	67.1	61.6	66.3	57.2
2006.....	58.1	63.2	53.3	70.6	75.7	65.7	61.5	67.0	56.2
2007.....	58.1	64.3	52.3	69.4	74.2	65.3	61.5	66.5	56.6
2008.....	57.4	62.6	52.5	67.8	72.8	63.3	59.3	63.6	55.2
2009.....	51.2	54.2	48.3	61.8	68.3	56.0	56.7	60.4	53.2
2010.....	49.0	53.0	45.2	60.1	61.6	58.7	56.5	60.8	52.5
2011.....	50.5	55.2	45.9	62.2	67.0	57.7	55.3	59.2	51.7
2012.....	52.1	58.5	45.9	63.0	64.7	61.4	57.6	61.9	53.5
2013.....	51.6	56.6	46.9	62.9	65.5	60.4	56.4	61.3	51.7
2014.....	54.0	59.2	48.9	63.5	69.6	57.5	57.6	62.1	53.4

Note: Beginning in 2003, estimates for White, Black or African American, Asian, American Indian and Alaska Native, and Native Hawaiian and Other Pacific Islander race groups include people who selected that race group only; people who selected more than one race group are included in the Two or More Races category. Prior to 2003, people who reported more than one race were included in the group they identified as the main race. Asian estimates for 2000–2002 are for Asians and Pacific Islanders; beginning in 2003, Asian is a separate category, as is Native Hawaiian and Other Pacific Islander. People whose ethnicity is identified as Hispanic or Latino may be of any race. Dash indicates data not available.

Source: Current Population Survey, U.S. Bureau of Labor Statistics.

LABOR FORCE CHARACTERISTICS BY RACE AND ETHNICITY, 2014

Table 6. Employment status of people 25 years and older by educational attainment, gender, race, and Hispanic or Latino ethnicity, 2014 annual averages
(Numbers in thousands)

Employment status, gender, race, and Hispanic or Latino ethnicity	Total, 25 years and older	Less than a high school diploma	High school graduates, no college ¹	Some college, no degree	Associate's degree	Bachelor's degree and higher ²
Total						
Civilian noninstitutional population.....	209,234	24,143	62,060	34,856	20,839	67,337
Civilian labor force.....	134,627	10,828	36,033	22,518	14,802	50,446
Percent of population.....	64.3	44.9	58.1	64.6	71.0	74.9
Employed.....	127,863	9,852	33,865	21,159	14,139	48,848
Employment-population ratio.....	61.1	40.8	54.6	60.7	67.9	72.5
Unemployed.....	6,764	976	2,167	1,359	663	1,599
Unemployment rate.....	5.0	9.0	6.0	6.0	4.5	3.2
Men						
Civilian noninstitutional population.....	100,232	12,056	30,467	16,572	8,927	32,210
Civilian labor force.....	71,873	6,967	20,683	11,825	6,824	25,574
Percent of population.....	71.7	57.8	67.9	71.4	76.4	79.4
Employed.....	68,284	6,410	19,403	11,151	6,531	24,791
Employment-population ratio.....	68.1	53.2	63.7	67.3	73.2	77.0
Unemployed.....	3,589	557	1,280	674	294	784
Unemployment rate.....	5.0	8.0	6.2	5.7	4.3	3.1
Women						
Civilian noninstitutional population.....	109,002	12,087	31,592	18,284	11,911	35,127
Civilian labor force.....	62,754	3,861	15,349	10,693	7,978	24,872
Percent of population.....	57.6	31.9	48.6	58.5	67.0	70.8
Employed.....	59,579	3,442	14,462	10,009	7,609	24,057
Employment-population ratio.....	54.7	28.5	45.8	54.7	63.9	68.5
Unemployed.....	3,174	419	887	685	369	815
Unemployment rate.....	5.1	10.8	5.8	6.4	4.6	3.3
White						
Civilian noninstitutional population.....	166,792	18,527	49,627	27,457	17,025	54,157
Civilian labor force.....	106,925	8,565	28,599	17,454	12,048	40,258
Percent of population.....	64.1	46.2	57.6	63.6	70.8	74.3
Employed.....	102,245	7,895	27,132	16,556	11,556	39,106
Employment-population ratio.....	61.3	42.6	54.7	60.3	67.9	72.2
Unemployed.....	4,680	670	1,467	898	493	1,152
Unemployment rate.....	4.4	7.8	5.1	5.1	4.1	2.9
Men						
Civilian noninstitutional population.....	80,943	9,488	24,503	13,222	7,377	26,353
Civilian labor force.....	58,121	5,681	16,711	9,399	5,644	20,686
Percent of population.....	71.8	59.9	68.2	71.1	76.5	78.5
Employed.....	55,608	5,299	15,830	8,942	5,424	20,113
Employment-population ratio.....	68.7	55.9	64.6	67.6	73.5	76.3
Unemployed.....	2,513	382	880	457	221	573
Unemployment rate.....	4.3	6.7	5.3	4.9	3.9	2.8
Women						
Civilian noninstitutional population.....	85,849	9,039	25,124	14,235	9,648	27,803
Civilian labor force.....	48,804	2,884	11,889	8,056	6,404	19,572
Percent of population.....	56.8	31.9	47.3	56.6	66.4	70.4
Employed.....	46,637	2,596	11,302	7,614	6,132	18,993
Employment-population ratio.....	54.3	28.7	45.0	53.5	63.6	68.3
Unemployed.....	2,167	288	587	441	272	579
Unemployment rate.....	4.4	10.0	4.9	5.5	4.2	3.0

See footnotes at end of table.

LABOR FORCE CHARACTERISTICS BY RACE AND ETHNICITY, 2014

Table 6. Employment status of people 25 years and older by educational attainment, gender, race, and Hispanic or Latino ethnicity, 2014 annual averages—Continued
(Numbers in thousands)

Employment status, gender, race, and Hispanic or Latino ethnicity	Total, 25 years and older	Less than a high school diploma	High school graduates, no college ¹	Some college, no degree	Associate's degree	Bachelor's degree and higher ²
Black or African American						
Civilian noninstitutional population.....	24,875	3,461	8,382	5,029	2,482	5,522
Civilian labor force.....	15,887	1,308	4,976	3,464	1,797	4,341
Percent of population.....	63.9	37.8	59.4	68.9	72.4	78.6
Employed.....	14,437	1,084	4,442	3,119	1,674	4,117
Employment-population ratio.....	58.0	31.3	53.0	62.0	67.5	74.6
Unemployed.....	1,450	225	534	345	122	224
Unemployment rate.....	9.1	17.2	10.7	10.0	6.8	5.2
Men						
Civilian noninstitutional population.....	11,076	1,626	4,064	2,219	951	2,215
Civilian labor force.....	7,448	722	2,614	1,592	707	1,812
Percent of population.....	67.2	44.4	64.3	71.7	74.4	81.8
Employed.....	6,726	592	2,319	1,433	662	1,720
Employment-population ratio.....	60.7	36.4	57.1	64.6	69.6	77.6
Unemployed.....	722	130	295	159	45	93
Unemployment rate.....	9.7	18.0	11.3	10.0	6.4	5.1
Women						
Civilian noninstitutional population.....	13,799	1,834	4,318	2,810	1,531	3,306
Civilian labor force.....	8,439	586	2,362	1,872	1,089	2,529
Percent of population.....	61.2	32.0	54.7	66.6	71.2	76.5
Employed.....	7,711	492	2,123	1,686	1,012	2,398
Employment-population ratio.....	55.9	26.8	49.2	60.0	66.1	72.5
Unemployed.....	728	95	239	186	77	131
Unemployment rate.....	8.6	16.1	10.1	10.0	7.1	5.2
Asian						
Civilian noninstitutional population.....	11,741	1,213	2,280	1,174	749	6,325
Civilian labor force.....	7,924	493	1,350	774	542	4,765
Percent of population.....	67.5	40.6	59.2	66.0	72.4	75.3
Employed.....	7,589	459	1,289	732	521	4,589
Employment-population ratio.....	64.6	37.8	56.5	62.3	69.5	72.6
Unemployed.....	335	34	61	43	21	176
Unemployment rate.....	4.2	6.9	4.5	5.5	3.9	3.7
Men						
Civilian noninstitutional population.....	5,396	450	973	570	338	3,064
Civilian labor force.....	4,207	249	693	411	270	2,585
Percent of population.....	78.0	55.4	71.2	72.1	79.8	84.3
Employed.....	4,023	232	656	388	256	2,491
Employment-population ratio.....	74.6	51.5	67.4	68.0	75.8	81.3
Unemployed.....	184	17	37	23	14	93
Unemployment rate.....	4.4	6.9	5.3	5.6	5.1	3.6
Women						
Civilian noninstitutional population.....	6,345	763	1,307	604	411	3,261
Civilian labor force.....	3,716	243	657	363	272	2,180
Percent of population.....	58.6	31.9	50.3	60.2	66.2	66.9
Employed.....	3,566	227	633	344	265	2,098
Employment-population ratio.....	56.2	29.7	48.4	56.9	64.4	64.3
Unemployed.....	151	17	24	19	8	83
Unemployment rate.....	4.1	6.9	3.7	5.4	2.8	3.8

See footnotes at end of table.

Table 6. Employment status of people 25 years and older by educational attainment, gender, race, and Hispanic or Latino ethnicity, 2014 annual averages—Continued
(Numbers in thousands)

Employment status, gender, race, and Hispanic or Latino ethnicity	Total, 25 years and older	Less than a high school diploma	High school graduates, no college ¹	Some college, no degree	Associate's degree	Bachelor's degree and higher ²
Hispanic or Latino ethnicity						
Civilian noninstitutional population.....	30,096	9,683	9,098	4,236	2,227	4,851
Civilian labor force.....	20,946	5,792	6,349	3,187	1,725	3,893
Percent of population.....	69.6	59.8	69.8	75.2	77.5	80.2
Employed.....	19,686	5,365	5,954	2,990	1,636	3,741
Employment-population ratio.....	65.4	55.4	65.4	70.6	73.5	77.1
Unemployed.....	1,260	428	395	197	89	151
Unemployment rate.....	6.0	7.4	6.2	6.2	5.2	3.9
Men						
Civilian noninstitutional population.....	14,982	4,991	4,677	2,094	958	2,263
Civilian labor force.....	12,204	3,876	3,806	1,740	826	1,957
Percent of population.....	81.5	77.6	81.4	83.1	86.2	86.5
Employed.....	11,546	3,651	3,584	1,637	791	1,883
Employment-population ratio.....	77.1	73.2	76.6	78.2	82.6	83.2
Unemployed.....	658	224	222	102	35	74
Unemployment rate.....	5.4	5.8	5.8	5.9	4.3	3.8
Women						
Civilian noninstitutional population.....	15,114	4,692	4,421	2,142	1,270	2,589
Civilian labor force.....	8,742	1,917	2,543	1,447	899	1,936
Percent of population.....	57.8	40.8	57.5	67.6	70.8	74.8
Employed.....	8,140	1,713	2,370	1,353	845	1,859
Employment-population ratio.....	53.9	36.5	53.6	63.2	66.6	71.8
Unemployed.....	602	203	173	94	54	78
Unemployment rate.....	6.9	10.6	6.8	6.5	6.0	4.0

¹ Includes people with a high school diploma or equivalent.

² Includes people with bachelor's, master's, professional, and doctoral degrees.

Note: Estimates for the above race groups (White, Black or African American, and Asian) do not sum to totals because data are not presented for all races. People whose ethnicity is identified as Hispanic or Latino may be of any race.

Source: Current Population Survey, U.S. Bureau of Labor Statistics.

LABOR FORCE CHARACTERISTICS BY RACE AND ETHNICITY, 2014

Table 7. Employed people by occupation, gender, race, and Hispanic or Latino ethnicity, 2014 annual averages

Occupation and gender	Total	White	Black or African American	Asian	Hispanic or Latino ethnicity
Total, 16 years and older (thousands).....	146,305	116,788	16,732	8,325	23,492
Percent.....	100.0	100.0	100.0	100.0	100.0
Management, professional, and related occupations.....	38.3	39.0	29.5	50.7	20.8
Management, business, and financial operations.....	15.8	16.7	10.4	16.9	8.8
Management occupations.....	11.1	11.9	6.5	10.5	6.3
Business and financial operations occupations.....	4.8	4.8	3.9	6.4	2.5
Professional and related occupations.....	22.5	22.3	19.1	33.8	12.0
Computer and mathematical occupations.....	2.9	2.6	2.1	9.9	1.2
Architecture and engineering occupations.....	1.9	1.9	0.9	3.9	1.0
Life, physical, and social science occupations.....	0.9	0.9	0.5	2.0	0.4
Community and social services occupations.....	1.7	1.6	2.6	1.0	1.2
Legal occupations.....	1.2	1.3	0.8	1.0	0.6
Education, training, and library occupations.....	5.9	6.2	5.4	4.6	3.5
Arts, design, entertainment, sports, and media occupations.....	2.0	2.1	1.1	1.8	1.2
Healthcare practitioner and technical occupations.....	5.8	5.6	5.7	9.6	2.8
Service occupations.....	17.7	16.5	25.0	16.7	25.7
Healthcare support occupations.....	2.4	1.9	5.3	2.1	2.4
Protective service occupations.....	2.1	2.0	3.7	0.9	1.9
Food preparation and serving related occupations.....	5.5	5.3	6.1	5.9	8.6
Building and grounds cleaning and maintenance occupations.....	4.0	3.9	5.1	2.4	9.1
Personal care and service occupations.....	3.6	3.3	4.8	5.4	3.8
Sales and office occupations.....	22.8	22.9	23.9	19.4	21.2
Sales and related occupations.....	10.7	10.9	10.0	10.0	9.8
Office and administrative support occupations.....	12.1	12.0	13.9	9.3	11.4
Natural resources, construction, and maintenance occupations.....	9.3	10.1	5.9	3.3	15.9
Farming, fishing, and forestry occupations.....	0.7	0.8	0.4	0.2	1.9
Construction and extraction occupations.....	5.2	5.7	3.1	1.2	10.5
Installation, maintenance, and repair occupations.....	3.3	3.6	2.4	1.9	3.5
Production, transportation, and material-moving occupations.....	11.9	11.5	15.7	9.9	16.3
Production occupations.....	5.8	5.6	6.3	6.3	7.9
Transportation and material-moving occupations.....	6.2	5.8	9.3	3.7	8.5

See note at end of table.

LABOR FORCE CHARACTERISTICS BY RACE AND ETHNICITY, 2014

Table 7. Employed people by occupation, gender, race, and Hispanic or Latino ethnicity, 2014 annual averages—Continued

Occupation and gender	Total	White	Black or African American	Asian	Hispanic or Latino ethnicity
Men, 16 years and older (thousands).....	77,692	63,108	7,818	4,403	13,655
Percent.....	100.0	100.0	100.0	100.0	100.0
Management, professional, and related occupations.....	34.9	35.5	23.6	52.5	17.0
Management, business, and financial operations.....	16.8	17.9	9.6	17.2	8.4
Management occupations.....	12.8	13.8	6.9	11.8	6.5
Business and financial operations occupations.....	4.0	4.1	2.6	5.4	1.9
Professional and related occupations.....	18.1	17.6	14.1	35.2	8.6
Computer and mathematical occupations.....	4.1	3.6	3.0	14.2	1.7
Architecture and engineering occupations.....	3.0	3.1	1.5	5.9	1.5
Life, physical, and social science occupations.....	0.9	0.9	0.5	2.1	0.4
Community and social services occupations.....	1.1	1.1	1.9	1.0	0.7
Legal occupations.....	1.1	1.3	0.6	0.9	0.4
Education, training, and library occupations.....	2.9	2.9	2.8	3.0	1.5
Arts, design, entertainment, sports, and media occupations.....	2.0	2.1	1.4	1.6	1.2
Healthcare practitioner and technical occupations.....	2.8	2.7	2.4	6.4	1.4
Service occupations.....	14.4	13.4	21.6	13.0	21.2
Healthcare support occupations.....	0.6	0.4	1.4	1.0	0.5
Protective service occupations.....	3.2	3.0	5.4	1.3	2.7
Food preparation and serving related occupations.....	4.7	4.3	6.2	5.9	7.9
Building and grounds cleaning and maintenance occupations.....	4.5	4.4	6.0	2.4	8.8
Personal care and service occupations.....	1.6	1.3	2.7	2.4	1.3
Sales and office occupations.....	16.4	16.3	17.5	15.9	14.3
Sales and related occupations.....	10.2	10.5	8.7	9.9	7.6
Office and administrative support occupations.....	6.2	5.8	8.8	6.0	6.6
Natural resources, construction, and maintenance occupations.....	16.7	17.9	11.9	6.0	26.0
Farming, fishing, and forestry occupations.....	1.0	1.1	0.6	0.2	2.4
Construction and extraction occupations.....	9.6	10.4	6.4	2.3	17.7
Installation, maintenance, and repair occupations.....	6.1	6.4	4.9	3.5	5.8
Production, transportation, and material-moving occupations.....	17.6	16.9	25.3	12.7	21.6
Production occupations.....	7.8	7.8	8.8	6.6	9.4
Transportation and material-moving occupations.....	9.8	9.1	16.4	6.1	12.2

See note at end of table.

LABOR FORCE CHARACTERISTICS BY RACE AND ETHNICITY, 2014

Table 7. Employed people by occupation, gender, race, and Hispanic or Latino ethnicity, 2014 annual averages—Continued

Occupation and gender	Total	White	Black or African American	Asian	Hispanic or Latino ethnicity
Women, 16 years and older (thousands).....	68,613	53,680	8,915	3,922	9,838
Percent.....	100.0	100.0	100.0	100.0	100.0
Management, professional, and related occupations.....	42.2	43.2	34.7	48.7	26.1
Management, business, and financial operations.....	14.8	15.3	11.2	16.5	9.4
Management occupations.....	9.1	9.7	6.1	9.1	6.0
Business and financial operations occupations.....	5.7	5.7	5.1	7.4	3.4
Professional and related occupations.....	27.4	27.9	23.5	32.2	16.7
Computer and mathematical occupations.....	1.6	1.4	1.4	5.1	0.6
Architecture and engineering occupations.....	0.6	0.6	0.3	1.7	0.3
Life, physical, and social science occupations.....	0.9	0.9	0.5	1.9	0.5
Community and social services occupations.....	2.3	2.3	3.3	1.0	2.0
Legal occupations.....	1.3	1.4	1.0	1.1	1.0
Education, training, and library occupations.....	9.4	10.0	7.6	6.2	6.4
Arts, design, entertainment, sports, and media occupations.....	2.0	2.2	0.8	1.9	1.3
Healthcare practitioner and technical occupations.....	9.2	9.1	8.6	13.2	4.8
Service occupations.....	21.4	20.1	27.9	20.9	32.0
Healthcare support occupations.....	4.4	3.8	8.8	3.5	5.0
Protective service occupations.....	1.0	0.8	2.2	0.5	0.9
Food preparation and serving related occupations.....	6.5	6.6	6.1	5.8	9.5
Building and grounds cleaning and maintenance occupations.....	3.4	3.3	4.3	2.4	9.5
Personal care and service occupations.....	6.0	5.7	6.6	8.7	7.2
Sales and office occupations.....	30.1	30.6	29.5	23.2	30.9
Sales and related occupations.....	11.2	11.3	11.1	10.2	12.8
Office and administrative support occupations.....	18.9	19.3	18.4	13.0	18.1
Natural resources, construction, and maintenance occupations.....	0.9	0.9	0.7	0.4	1.8
Farming, fishing, and forestry occupations.....	0.3	0.4	0.2	0.2	1.1
Construction and extraction occupations.....	0.3	0.3	0.2	0.0	0.4
Installation, maintenance, and repair occupations.....	0.3	0.2	0.3	0.2	0.2
Production, transportation, and material-moving occupations.....	5.5	5.1	7.2	6.9	9.1
Production occupations.....	3.4	3.1	4.2	5.9	5.8
Transportation and material-moving occupations.....	2.1	2.0	3.1	1.0	3.4

Note: Estimates for the above race groups (White, Black or African American, and Asian) do not sum to totals because data are not presented for all races. People whose ethnicity is identified as Hispanic or Latino may be of any race.

Source: Current Population Survey, U.S. Bureau of Labor Statistics.

LABOR FORCE CHARACTERISTICS BY RACE AND ETHNICITY, 2014

Table 8. Employed people by detailed occupation, race, and Hispanic or Latino ethnicity, 2014 annual averages
 [Numbers in thousands]

Occupation	Total employed	Percent of total employed			
		White	Black or African American	Asian	Hispanic or Latino ethnicity
Total, 16 years and over.....	146,305	79.8	11.4	5.7	16.1
Management, professional, and related occupations.....	56,050	81.3	8.8	7.5	8.7
Management, business, and financial operations occupations.....	23,171	84.2	7.5	6.1	8.9
Management occupations.....	16,199	85.8	6.7	5.4	9.1
Chief executives.....	1,603	90.6	3.0	4.7	4.7
General and operations managers.....	887	87.9	6.2	3.9	11.5
Legislators.....	17	—	—	—	—
Advertising and promotions managers.....	52	86.3	6.7	4.9	4.6
Marketing and sales managers.....	917	88.1	3.9	5.9	8.3
Public relations and fundraising managers.....	71	80.8	7.7	7.9	12.9
Administrative services managers.....	134	87.1	8.1	2.7	9.0
Computer and information systems managers.....	629	79.4	6.3	11.6	4.9
Financial managers.....	1,194	83.8	7.8	6.9	10.5
Compensation and benefits managers.....	17	—	—	—	—
Human resources managers.....	236	83.0	11.8	3.3	10.0
Training and development managers.....	38	—	—	—	—
Industrial production managers.....	273	89.4	4.2	3.6	8.4
Purchasing managers.....	193	79.8	7.6	8.9	11.6
Transportation, storage, and distribution managers.....	260	85.1	7.0	6.1	12.4
Farmers, ranchers, and other agricultural managers.....	941	96.3	0.9	0.8	4.2
Construction managers.....	711	92.6	3.7	2.3	10.2
Education administrators.....	838	81.7	13.3	2.1	9.1
Architectural and engineering managers.....	122	86.9	2.7	9.9	8.4
Food service managers.....	1,113	77.7	9.8	10.0	16.4
Funeral service managers.....	13	—	—	—	—
Gaming managers.....	28	—	—	—	—
Lodging managers.....	146	71.1	8.1	15.5	7.1
Medical and health services managers.....	593	81.4	11.0	5.5	8.1
Natural sciences managers.....	18	—	—	—	—
Postmasters and mail superintendents.....	33	—	—	—	—
Property, real estate, and community association managers.....	674	87.0	7.5	3.1	12.9
Social and community service managers.....	362	77.1	14.6	5.3	7.6
Emergency management directors.....	8	—	—	—	—
Managers, all other.....	4,075	85.8	6.6	5.5	9.2
Business and financial operations occupations.....	6,972	80.7	9.5	7.6	8.4
Agents and business managers of artists, performers, and athletes.....	52	82.1	9.7	5.7	8.3
Buyers and purchasing agents, farm products.....	15	—	—	—	—
Wholesale and retail buyers, except farm products.....	216	84.4	6.1	7.0	8.8
Purchasing agents, except wholesale, retail, and farm products.....	271	83.6	10.8	3.5	9.0
Claims adjusters, appraisers, examiners, and investigators.....	311	80.1	15.2	3.3	9.7
Compliance officers.....	239	82.0	10.4	5.3	9.3
Cost estimators.....	105	93.4	2.4	3.8	5.6
Human resources workers.....	615	79.7	13.3	4.0	12.1
Compensation, benefits, and job analysis specialists.....	71	72.7	16.3	8.6	9.1
Training and development specialists.....	128	77.5	11.0	2.1	7.6
Logisticians.....	100	79.8	12.0	4.2	15.6
Management analysts.....	850	80.9	7.7	9.6	5.8
Meeting, convention, and event planners.....	156	78.9	12.8	3.3	6.8
Fundraisers.....	92	88.3	4.4	2.3	3.5
Market research analysts and marketing specialists.....	284	80.6	5.6	12.1	7.3
Business operations specialists, all other.....	194	78.0	10.7	7.4	11.0
Accountants and auditors.....	1,724	79.4	8.2	10.7	7.8
Appraisers and assessors of real estate.....	95	90.2	5.4	1.6	4.2
Budget analysts.....	48	—	—	—	—
Credit analysts.....	28	—	—	—	—
Financial analysts.....	261	75.9	4.9	15.8	7.2
Personal financial advisors.....	434	84.8	8.1	5.7	7.1
Insurance underwriters.....	113	85.1	12.3	2.4	7.6
Financial examiners.....	16	—	—	—	—
Credit counselors and loan officers.....	288	81.3	10.3	6.3	11.0
Tax examiners and collectors, and revenue agents.....	70	74.4	18.3	7.3	6.4
Tax preparers.....	103	73.4	16.5	5.7	13.1

See note at end of table.

Table 8. Employed people by detailed occupation, race, and Hispanic or Latino ethnicity, 2014 annual averages — Continued
 [Numbers in thousands]

Occupation	Total employed	Percent of total employed			
		White	Black or African American	Asian	Hispanic or Latino ethnicity
Financial specialists, all other.....	93	79.6	11.1	8.1	11.2
Professional and related occupations.....	32,879	79.3	9.7	8.6	8.6
Computer and mathematical occupations.....	4,303	70.0	8.3	19.2	6.6
Computer and information research scientists.....	29	—	—	—	—
Computer systems analysts.....	511	68.1	9.7	20.9	4.8
Information security analysts.....	68	80.0	9.7	5.7	6.1
Computer programmers.....	509	72.7	5.7	19.7	6.4
Software developers, applications and systems software.....	1,235	60.7	5.3	31.9	5.2
Web developers.....	220	81.7	6.3	5.7	8.6
Computer support specialists.....	524	74.3	14.3	8.1	9.4
Database administrators.....	108	73.4	11.7	13.3	4.6
Network and computer systems administrators.....	205	79.0	9.5	8.4	7.9
Computer network architects.....	123	73.5	7.4	17.3	6.3
Computer occupations, all other.....	512	75.7	9.7	12.5	8.5
Actuaries.....	28	—	—	—	—
Mathematicians.....	3	—	—	—	—
Operations research analysts.....	138	73.6	11.0	11.9	10.5
Statisticians.....	85	64.2	5.8	24.5	4.1
Miscellaneous mathematical science occupations.....	5	—	—	—	—
Architecture and engineering occupations.....	2,798	80.8	5.2	11.7	8.2
Architects, except naval.....	178	85.3	4.1	10.0	7.2
Surveyors, cartographers, and photogrammetrists.....	41	—	—	—	—
Aerospace engineers.....	147	78.1	6.2	10.7	11.4
Agricultural engineers.....	4	—	—	—	—
Biomedical engineers.....	14	—	—	—	—
Chemical engineers.....	79	81.9	3.0	12.6	3.6
Civil engineers.....	349	82.8	6.1	9.7	8.8
Computer hardware engineers.....	84	68.2	7.4	22.8	9.5
Electrical and electronics engineers.....	271	72.8	3.9	21.4	5.3
Environmental engineers.....	42	—	—	—	—
Industrial engineers, including health and safety.....	194	83.8	5.5	9.7	8.6
Marine engineers and naval architects.....	9	—	—	—	—
Materials engineers.....	35	—	—	—	—
Mechanical engineers.....	303	84.5	3.3	9.9	5.6
Mining and geological engineers, including mining safety engineers.....	15	—	—	—	—
Nuclear engineers.....	5	—	—	—	—
Petroleum engineers.....	37	—	—	—	—
Engineers, all other.....	406	75.4	4.4	18.2	8.0
Drafters.....	138	89.6	5.3	4.3	6.5
Engineering technicians, except drafters.....	369	79.2	8.2	8.7	13.2
Surveying and mapping technicians.....	77	87.4	6.8	0.8	9.4
Life, physical, and social science occupations.....	1,355	78.7	6.4	12.3	7.5
Agricultural and food scientists.....	31	—	—	—	—
Biological scientists.....	110	81.3	5.3	10.5	6.0
Conservation scientists and foresters.....	27	—	—	—	—
Medical scientists.....	143	58.2	5.1	33.8	7.9
Life scientists, all other.....	0	—	—	—	—
Astronomers and physicists.....	12	—	—	—	—
Atmospheric and space scientists.....	7	—	—	—	—
Chemists and materials scientists.....	102	76.8	8.1	12.7	6.0
Environmental scientists and geoscientists.....	91	93.7	1.3	3.9	6.6
Physical scientists, all other.....	183	69.5	3.0	25.4	5.7
Economists.....	33	—	—	—	—
Survey researchers.....	4	—	—	—	—
Psychologists.....	232	91.2	5.7	1.3	8.0
Sociologists.....	3	—	—	—	—
Urban and regional planners.....	24	—	—	—	—
Miscellaneous social scientists and related workers.....	42	—	—	—	—
Agricultural and food science technicians.....	39	—	—	—	—
Biological technicians.....	25	—	—	—	—
Chemical technicians.....	71	75.2	16.4	4.6	8.9
Geological and petroleum technicians.....	20	—	—	—	—

See note at end of table.

LABOR FORCE CHARACTERISTICS BY RACE AND ETHNICITY, 2014

Table 8. Employed people by detailed occupation, race, and Hispanic or Latino ethnicity, 2014 annual averages — Continued

[Numbers in thousands]

Occupation	Total employed	Percent of total employed			
		White	Black or African American	Asian	Hispanic or Latino ethnicity
Nuclear technicians.....	6	—	—	—	—
Social science research assistants.....	2	—	—	—	—
Miscellaneous life, physical, and social science technicians.....	149	77.9	7.4	11.6	7.7
Community and social service occupations.....	2,495	75.6	17.5	3.4	11.6
Counselors.....	737	74.4	18.7	2.8	10.6
Social workers.....	799	72.8	21.3	2.4	13.2
Probation officers and correctional treatment specialists.....	100	73.5	21.0	3.2	16.4
Social and human service assistants.....	180	69.0	25.5	2.2	16.5
Miscellaneous community and social service specialists, including health educators and community health workers.....	114	79.3	14.6	1.7	17.4
Clergy.....	433	81.6	8.3	6.9	7.5
Directors, religious activities and education.....	64	87.7	4.1	1.1	7.1
Religious workers, all other.....	68	84.9	7.3	6.3	6.1
Legal occupations.....	1,814	85.9	7.5	4.5	7.9
Lawyers.....	1,132	88.6	5.7	4.4	5.6
Judicial law clerks.....	12	—	—	—	—
Judges, magistrates, and other judicial workers.....	53	80.8	10.9	3.2	4.8
Paralegals and legal assistants.....	417	83.1	9.5	4.3	14.2
Miscellaneous legal support workers.....	200	78.6	12.8	5.1	8.9
Education, training, and library occupations.....	8,686	83.0	10.3	4.4	9.5
Postsecondary teachers.....	1,259	79.6	6.1	12.2	6.1
Preschool and kindergarten teachers.....	664	78.1	15.8	3.4	13.9
Elementary and middle school teachers.....	3,102	85.3	10.2	2.5	8.7
Secondary school teachers.....	1,099	85.8	10.0	2.2	7.6
Special education teachers.....	336	87.4	8.9	1.5	6.8
Other teachers and instructors.....	836	79.8	11.5	6.0	11.1
Archivists, curators, and museum technicians.....	47	—	—	—	—
Librarians.....	198	90.5	3.6	4.0	5.7
Library technicians.....	36	—	—	—	—
Teacher assistants.....	904	80.0	14.4	3.0	17.1
Other education, training, and library workers.....	206	83.4	10.9	2.9	8.7
Arts, design, entertainment, sports, and media occupations.....	2,935	85.5	6.3	5.0	9.8
Artists and related workers.....	203	89.1	2.1	5.7	9.1
Designers.....	830	86.2	4.1	7.1	11.1
Actors.....	43	—	—	—	—
Producers and directors.....	161	88.0	4.6	4.0	11.7
Athletes, coaches, umpires, and related workers.....	294	88.0	6.5	2.5	8.8
Dancers and choreographers.....	18	—	—	—	—
Musicians, singers, and related workers.....	194	80.3	12.6	3.0	6.1
Entertainers and performers, sports and related workers, all other.....	38	—	—	—	—
Announcers.....	60	71.0	17.1	5.1	10.5
News analysts, reporters and correspondents.....	80	83.3	7.5	6.3	13.8
Public relations specialists.....	136	82.8	9.0	4.0	9.2
Editors.....	163	90.2	2.8	5.5	7.1
Technical writers.....	61	90.7	5.7	3.6	2.6
Writers and authors.....	221	88.1	6.2	3.2	5.6
Miscellaneous media and communication workers.....	78	78.6	4.8	11.6	33.3
Broadcast and sound engineering technicians and radio operators.....	108	76.6	15.2	4.8	10.5
Photographers.....	174	88.6	4.3	3.7	10.1
Television, video, and motion picture camera operators and editors.....	72	92.2	4.4	0.0	5.7
Media and communication equipment workers, all other.....	0	—	—	—	—
Healthcare practitioners and technical occupations.....	8,493	77.3	11.2	9.4	7.7
Chiropractors.....	66	93.0	0.0	7.0	2.9
Dentists.....	192	78.1	5.6	15.5	6.8
Dietitians and nutritionists.....	123	76.9	10.6	10.2	5.1
Optometrists.....	48	—	—	—	—
Pharmacists.....	293	70.3	8.1	18.9	5.6
Physicians and surgeons.....	1,014	71.4	5.5	21.0	6.3
Physician assistants.....	84	80.6	6.4	11.3	5.9
Podiatrists.....	8	—	—	—	—
Audiologists.....	20	—	—	—	—
Occupational therapists.....	111	90.7	5.7	3.0	5.2

See note at end of table.

LABOR FORCE CHARACTERISTICS BY RACE AND ETHNICITY, 2014

Table 8. Employed people by detailed occupation, race, and Hispanic or Latino ethnicity, 2014 annual averages — Continued
 [Numbers in thousands]

Occupation	Total employed	Percent of total employed			
		White	Black or African American	Asian	Hispanic or Latino ethnicity
Physical therapists.....	244	80.7	6.7	12.5	4.6
Radiation therapists.....	17	—	—	—	—
Recreational therapists.....	10	—	—	—	—
Respiratory therapists.....	112	75.1	13.7	9.8	4.9
Speech-language pathologists.....	137	87.4	7.2	3.2	8.4
Exercise physiologists.....	5	—	—	—	—
Therapists, all other.....	186	83.2	9.7	2.4	13.1
Veterinarians.....	81	95.2	3.1	1.1	4.9
Registered nurses.....	2,888	78.3	11.8	8.2	6.7
Nurse anesthetists.....	30	—	—	—	—
Nurse midwives.....	4	—	—	—	—
Nurse practitioners.....	128	86.6	7.7	5.2	3.9
Health diagnosing and treating practitioners, all other.....	24	—	—	—	—
Clinical laboratory technologists and technicians.....	293	67.0	18.2	12.8	10.9
Dental hygienists.....	175	90.0	4.3	5.5	9.9
Diagnostic related technologists and technicians.....	331	86.9	6.5	5.3	8.0
Emergency medical technicians and paramedics.....	232	86.3	7.7	1.2	8.4
Health practitioner support technologists and technicians.....	583	76.1	13.2	6.8	13.2
Licensed practical and licensed vocational nurses.....	641	63.9	27.9	5.0	9.9
Medical records and health information technicians.....	138	73.0	19.8	4.4	12.7
Opticians, dispensing.....	46	—	—	—	—
Miscellaneous health technologists and technicians.....	123	73.2	18.0	6.5	11.6
Other healthcare practitioners and technical occupations.....	108	86.1	8.7	4.0	9.1
Service occupations.....	25,854	74.5	16.2	5.4	23.4
Healthcare support occupations.....	3,461	65.8	25.7	5.2	16.2
Nursing, psychiatric, and home health aides.....	1,980	56.7	35.9	4.5	15.4
Occupational therapy assistants and aides.....	17	—	—	—	—
Physical therapist assistants and aides.....	70	79.5	7.8	8.8	5.5
Massage therapists.....	172	81.0	4.3	10.6	8.4
Dental assistants.....	273	86.0	5.1	5.4	23.5
Medical assistants.....	508	74.5	14.3	5.0	21.9
Medical transcriptionists.....	58	93.4	3.9	0.4	4.7
Pharmacy aides.....	45	—	—	—	—
Veterinary assistants and laboratory animal caretakers.....	41	—	—	—	—
Phlebotomists.....	118	75.5	17.9	3.8	18.0
Miscellaneous healthcare support occupations, including medical equipment preparers.....	179	64.6	26.9	6.6	11.4
Protective service occupations.....	3,140	74.3	19.7	2.3	14.4
First-line supervisors of correctional officers.....	49	—	—	—	—
First-line supervisors of police and detectives.....	126	80.4	14.4	0.7	7.0
First-line supervisors of fire fighting and prevention workers.....	58	91.3	6.2	1.6	9.3
First-line supervisors of protective service workers, all other.....	91	81.6	10.9	1.6	10.3
Firefighters.....	300	86.7	10.2	0.7	9.6
Fire inspectors.....	13	—	—	—	—
Bailiffs, correctional officers, and jailers.....	395	73.9	20.6	1.7	16.0
Detectives and criminal investigators.....	164	80.8	14.6	1.6	13.2
Fish and game wardens.....	3	—	—	—	—
Parking enforcement workers.....	10	—	—	—	—
Police and sheriff's patrol officers.....	680	79.5	15.6	1.8	13.2
Transit and railroad police.....	3	—	—	—	—
Animal control workers.....	9	—	—	—	—
Private detectives and investigators.....	98	82.4	14.5	3.0	13.5
Security guards and gaming surveillance officers.....	899	60.6	30.3	3.7	19.0
Crossing guards.....	66	70.3	21.6	6.2	6.1
Transportation security screeners.....	33	—	—	—	—
Lifeguards and other recreational, and all other protective service workers.....	141	83.6	12.6	1.8	11.1
Food preparation and serving related occupations.....	8,112	76.9	12.6	6.0	24.9
Chefs and head cooks.....	430	63.2	15.3	16.4	18.3
First-line supervisors of food preparation and serving workers.....	545	76.9	13.7	4.7	19.1
Cooks.....	1,992	73.8	16.5	4.9	34.0
Food preparation workers.....	885	75.6	13.4	6.9	27.2
Bartenders.....	416	88.0	6.0	1.9	15.5

See note at end of table.

LABOR FORCE CHARACTERISTICS BY RACE AND ETHNICITY, 2014

Table 8. Employed people by detailed occupation, race, and Hispanic or Latino ethnicity, 2014 annual averages — Continued
 [Numbers in thousands]

Occupation	Total employed	Percent of total employed			
		White	Black or African American	Asian	Hispanic or Latino ethnicity
Combined food preparation and serving workers, including fast food.....	428	71.2	20.5	3.3	18.7
Counter attendants, cafeteria, food concession, and coffee shop.....	254	77.8	13.9	4.3	21.6
Waiters and waitresses.....	2,054	82.3	7.5	6.6	19.4
Food servers, nonrestaurant.....	185	65.0	23.5	6.1	20.8
Dining room and cafeteria attendants and bartender helpers.....	375	82.0	7.6	5.5	34.1
Dishwashers.....	246	73.9	12.3	5.7	40.2
Hosts and hostesses, restaurant, lounge, and coffee shop.....	297	79.5	10.9	6.5	18.2
Food preparation and serving related workers, all other.....	6	—	—	—	—
Building and grounds cleaning and maintenance occupations.....	5,803	78.1	14.6	3.4	36.7
First-line supervisors of housekeeping and janitorial workers.....	282	79.0	14.7	2.8	24.1
First-line supervisors of landscaping, lawn service, and groundskeeping workers.....	210	89.4	8.3	1.4	22.7
Janitors and building cleaners.....	2,328	74.9	17.5	3.4	31.5
Maids and housekeeping cleaners.....	1,514	73.5	16.8	5.5	43.8
Pest control workers.....	80	86.4	10.9	0.5	17.0
Grounds maintenance workers.....	1,389	85.9	8.3	1.7	43.6
Personal care and service occupations.....	5,337	72.7	15.0	8.4	16.6
First-line supervisors of gaming workers.....	151	83.0	4.4	6.4	7.3
First-line supervisors of personal service workers.....	202	68.0	11.5	18.2	13.7
Animal trainers.....	41	—	—	—	—
Nonfarm animal caretakers.....	201	92.8	2.8	0.9	12.2
Gaming services workers.....	99	65.9	8.0	19.4	12.5
Motion picture projectionists.....	4	—	—	—	—
Ushers, lobby attendants, and ticket takers.....	54	68.8	24.3	3.6	13.1
Miscellaneous entertainment attendants and related workers.....	189	76.0	13.3	3.3	17.3
Embalmers and funeral attendants.....	13	—	—	—	—
Morticians, undertakers, and funeral directors.....	29	—	—	—	—
Barbers.....	110	55.4	36.3	5.4	23.7
Hairdressers, hairstylists, and cosmetologists.....	760	81.4	12.4	4.8	15.3
Miscellaneous personal appearance workers.....	296	36.2	5.9	55.3	10.3
Baggage porters, bellhops, and concierges.....	85	69.2	17.2	6.0	24.8
Tour and travel guides.....	54	86.4	5.9	5.8	11.3
Childcare workers.....	1,218	77.0	15.9	3.5	21.6
Personal care aides.....	1,254	63.9	23.0	7.9	18.2
Recreation and fitness workers.....	404	84.4	9.2	2.9	11.6
Residential advisors.....	43	—	—	—	—
Personal care and service workers, all other.....	131	81.7	8.2	3.1	15.3
Sales and office occupations.....	33,416	80.0	12.0	4.8	14.9
Sales and related occupations.....	15,646	81.1	10.7	5.3	14.7
First-line supervisors of retail sales workers.....	3,285	82.8	8.8	6.1	12.1
First-line supervisors of non-retail sales workers.....	1,200	87.7	5.6	4.8	11.2
Cashiers.....	3,242	70.5	18.3	6.9	22.0
Counter and rental clerks.....	113	82.0	11.8	4.5	22.5
Parts salespersons.....	93	91.1	4.8	0.5	12.2
Retail salespersons.....	3,316	79.4	12.3	4.6	16.2
Advertising sales agents.....	227	85.4	7.9	4.5	12.7
Insurance sales agents.....	562	86.0	8.3	4.9	13.2
Securities, commodities, and financial services sales agents.....	256	88.2	4.9	4.6	9.5
Travel agents.....	82	77.9	7.9	13.2	9.9
Sales representatives, services, all other.....	480	86.6	6.6	4.3	11.0
Sales representatives, wholesale and manufacturing.....	1,309	89.0	5.3	3.8	9.3
Models, demonstrators, and product promoters.....	66	84.0	5.5	4.0	15.9
Real estate brokers and sales agents.....	868	88.8	5.4	4.2	10.5
Sales engineers.....	43	—	—	—	—
Telemarketers.....	75	75.1	19.6	3.6	18.5
Door-to-door sales workers, news and street vendors, and related workers.....	175	80.4	10.6	3.5	21.7
Sales and related workers, all other.....	253	80.8	10.6	6.2	5.7
Office and administrative support occupations.....	17,771	79.1	13.1	4.4	15.1
First-line supervisors of office and administrative support workers.....	1,351	82.6	11.1	3.6	12.2
Switchboard operators, including answering service.....	19	—	—	—	—
Telephone operators.....	33	—	—	—	—
Communications equipment operators, all other.....	9	—	—	—	—

See note at end of table.

LABOR FORCE CHARACTERISTICS BY RACE AND ETHNICITY, 2014

Table 8. Employed people by detailed occupation, race, and Hispanic or Latino ethnicity, 2014 annual averages — Continued
 [Numbers in thousands]

Occupation	Total employed	Percent of total employed			
		White	Black or African American	Asian	Hispanic or Latino ethnicity
Bill and account collectors.....	165	75.4	20.3	1.5	13.9
Billing and posting clerks.....	507	78.4	13.3	5.2	12.2
Bookkeeping, accounting, and auditing clerks.....	1,231	83.7	8.0	4.8	10.9
Gaming cage workers.....	14	—	—	—	—
Payroll and timekeeping clerks.....	146	78.1	15.1	3.9	12.1
Procurement clerks.....	31	—	—	—	—
Tellers.....	361	79.4	10.5	7.1	16.8
Financial clerks, all other.....	65	79.2	11.8	6.4	7.8
Brokerage clerks.....	5	—	—	—	—
Correspondence clerks.....	6	—	—	—	—
Court, municipal, and license clerks.....	69	82.7	12.7	0.8	14.1
Credit authorizers, checkers, and clerks.....	44	—	—	—	—
Customer service representatives.....	2,086	74.1	17.0	4.5	16.5
Eligibility interviewers, government programs.....	70	67.9	26.3	3.2	20.6
File clerks.....	226	76.8	15.6	3.8	18.3
Hotel, motel, and resort desk clerks.....	120	73.2	12.4	9.3	25.1
Interviewers, except eligibility and loan.....	160	68.7	23.9	4.8	11.3
Library assistants, clerical.....	98	85.3	7.3	3.2	10.2
Loan interviewers and clerks.....	143	81.7	11.4	3.9	9.6
New accounts clerks.....	27	—	—	—	—
Order clerks.....	104	82.9	9.5	5.8	19.1
Human resources assistants, except payroll and timekeeping.....	101	76.9	17.1	1.9	15.1
Receptionists and information clerks.....	1,301	81.9	10.5	4.1	18.7
Reservation and transportation ticket agents and travel clerks.....	94	69.5	16.0	9.9	18.5
Information and record clerks, all other.....	95	80.0	9.7	6.5	15.0
Cargo and freight agents.....	23	—	—	—	—
Couriers and messengers.....	233	79.1	14.4	3.2	20.4
Dispatchers.....	267	82.4	14.0	1.8	14.9
Meter readers, utilities.....	23	—	—	—	—
Postal service clerks.....	117	59.2	30.8	8.7	7.9
Postal service mail carriers.....	311	71.7	19.2	5.3	12.9
Postal service mail sorters, processors, and processing machine operators.....	61	61.8	27.5	5.7	9.5
Production, planning, and expediting clerks.....	244	82.8	11.4	4.5	13.5
Shipping, receiving, and traffic clerks.....	606	80.0	13.3	3.2	23.2
Stock clerks and order fillers.....	1,483	75.4	16.0	4.2	22.3
Weighers, measurers, checkers, and samplers, recordkeeping.....	75	83.2	14.7	1.5	22.2
Secretaries and administrative assistants.....	2,995	84.2	9.8	3.3	12.7
Computer operators.....	87	79.8	12.5	4.3	8.5
Data entry keyers.....	292	73.5	16.1	8.4	12.9
Word processors and typists.....	101	75.3	18.4	5.3	10.7
Desktop publishers.....	2	—	—	—	—
Insurance claims and policy processing clerks.....	288	80.4	15.2	2.9	10.1
Mail clerks and mail machine operators, except postal service.....	79	67.2	20.0	10.3	13.8
Office clerks, general.....	1,230	76.6	13.3	6.1	15.5
Office machine operators, except computer.....	39	—	—	—	—
Proofreaders and copy markers.....	10	—	—	—	—
Statistical assistants.....	23	—	—	—	—
Office and administrative support workers, all other.....	497	79.6	12.9	3.9	12.2
Natural resources, construction, and maintenance occupations.....	13,537	87.1	7.3	2.1	27.6
Farming, fishing, and forestry occupations.....	1,022	89.2	6.0	1.6	43.4
First-line supervisors of farming, fishing, and forestry workers.....	44	—	—	—	—
Agricultural inspectors.....	17	—	—	—	—
Animal breeders.....	6	—	—	—	—
Graders and sorters, agricultural products.....	93	82.1	13.4	2.1	54.0
Miscellaneous agricultural workers.....	739	90.5	5.1	1.5	49.2
Fishers and related fishing workers.....	32	—	—	—	—
Hunters and trappers.....	2	—	—	—	—
Forest and conservation workers.....	18	—	—	—	—
Logging workers.....	71	87.6	8.4	1.5	11.8
Construction and extraction occupations.....	7,637	87.8	6.9	1.3	32.3
First-line supervisors of construction trades and extraction workers.....	696	89.7	5.7	1.1	18.9
Boilermakers.....	17	—	—	—	—

See note at end of table.

LABOR FORCE CHARACTERISTICS BY RACE AND ETHNICITY, 2014

Table 8. Employed people by detailed occupation, race, and Hispanic or Latino ethnicity, 2014 annual averages — Continued
 [Numbers in thousands]

Occupation	Total employed	Percent of total employed			
		White	Black or African American	Asian	Hispanic or Latino ethnicity
Brickmasons, blockmasons, and stonemasons.....	142	87.2	8.1	0.3	43.9
Carpenters.....	1,282	89.6	5.0	1.4	31.9
Carpet, floor, and tile installers and finishers.....	170	86.0	4.8	3.6	44.2
Cement masons, concrete finishers, and terrazzo workers.....	58	83.5	9.5	0.0	48.7
Construction laborers.....	1,686	84.2	9.4	1.8	42.1
Paving, surfacing, and tamping equipment operators.....	19	—	—	—	—
Pile-driver operators.....	1	—	—	—	—
Operating engineers and other construction equipment operators.....	336	87.6	6.8	0.1	16.9
Drywall installers, ceiling tile installers, and tapers.....	162	92.4	1.8	0.3	61.5
Electricians.....	769	88.8	6.5	1.8	18.2
Glaziers.....	35	—	—	—	—
Insulation workers.....	44	—	—	—	—
Painters, construction and maintenance.....	561	86.8	7.3	1.4	48.2
Paperhangers.....	4	—	—	—	—
Pipelayers, plumbers, pipefitters, and steamfitters.....	564	89.0	6.9	1.6	21.4
Plasterers and stucco masons.....	31	—	—	—	—
Reinforcing iron and rebar workers.....	9	—	—	—	—
Roofers.....	206	92.0	4.3	0.5	58.1
Sheet metal workers.....	110	91.8	5.2	0.8	10.2
Structural iron and steel workers.....	52	87.4	10.8	0.0	23.4
Solar photovoltaic installers.....	14	—	—	—	—
Helpers, construction trades.....	57	83.7	12.1	0.0	45.6
Construction and building inspectors.....	78	92.3	3.3	2.3	5.3
Elevator installers and repairers.....	22	—	—	—	—
Fence erectors.....	33	—	—	—	—
Hazardous materials removal workers.....	23	—	—	—	—
Highway maintenance workers.....	123	88.5	9.3	0.0	17.1
Rail-track laying and maintenance equipment operators.....	17	—	—	—	—
Septic tank servicers and sewer pipe cleaners.....	14	—	—	—	—
Miscellaneous construction and related workers.....	33	—	—	—	—
Derrick, rotary drill, and service unit operators, oil, gas, and mining.....	54	92.3	3.9	0.0	32.1
Earth drillers, except oil and gas.....	29	—	—	—	—
Explosives workers, ordnance handling experts, and blasters.....	5	—	—	—	—
Mining machine operators.....	68	96.0	2.3	0.0	22.4
Roof bolters, mining.....	3	—	—	—	—
Roustabouts, oil and gas.....	11	—	—	—	—
Helpers--extraction workers.....	7	—	—	—	—
Other extraction workers.....	92	86.7	5.7	0.0	29.1
Installation, maintenance, and repair occupations.....	4,879	85.5	8.4	3.3	16.8
First-line supervisors of mechanics, installers, and repairers.....	284	86.1	8.4	3.3	11.2
Computer, automated teller, and office machine repairers.....	265	76.4	12.2	7.9	12.3
Radio and telecommunications equipment installers and repairers.....	134	76.4	12.5	6.3	8.7
Avionics technicians.....	8	—	—	—	—
Electric motor, power tool, and related repairers.....	35	—	—	—	—
Electrical and electronics installers and repairers, transportation equipment.....	5	—	—	—	—
Electrical and electronics repairers, industrial and utility.....	15	—	—	—	—
Electronic equipment installers and repairers, motor vehicles.....	17	—	—	—	—
Electronic home entertainment equipment installers and repairers.....	34	—	—	—	—
Security and fire alarm systems installers.....	58	87.8	9.0	1.7	26.2
Aircraft mechanics and service technicians.....	127	81.1	9.0	6.9	12.5
Automotive body and related repairers.....	133	90.5	5.9	1.7	18.3
Automotive glass installers and repairers.....	21	—	—	—	—
Automotive service technicians and mechanics.....	883	84.0	9.0	4.5	24.1
Bus and truck mechanics and diesel engine specialists.....	323	88.5	7.8	0.6	15.6
Heavy vehicle and mobile equipment service technicians and mechanics.....	211	92.9	3.8	0.6	15.5
Small engine mechanics.....	50	91.1	5.3	3.2	9.5
Miscellaneous vehicle and mobile equipment mechanics, installers, and repairers.....	93	81.1	10.1	2.4	28.0
Control and valve installers and repairers.....	19	—	—	—	—
Heating, air conditioning, and refrigeration mechanics and installers.....	378	86.3	8.5	2.4	16.4
Home appliance repairers.....	51	84.0	13.4	1.9	19.2
Industrial and refractory machinery mechanics.....	454	89.4	6.3	1.7	13.3

See note at end of table.

LABOR FORCE CHARACTERISTICS BY RACE AND ETHNICITY, 2014

Table 8. Employed people by detailed occupation, race, and Hispanic or Latino ethnicity, 2014 annual averages — Continued
 [Numbers in thousands]

Occupation	Total employed	Percent of total employed			
		White	Black or African American	Asian	Hispanic or Latino ethnicity
Maintenance and repair workers, general.....	471	84.0	9.9	3.6	17.2
Maintenance workers, machinery.....	37	—	—	—	—
Millwrights.....	48	—	—	—	—
Electrical power-line installers and repairers.....	115	92.2	5.2	0.9	7.8
Telecommunications line installers and repairers.....	184	79.5	12.1	4.7	17.3
Precision instrument and equipment repairers.....	85	85.3	7.2	4.7	11.6
Wind turbine service technicians.....	4	—	—	—	—
Coin, vending, and amusement machine servicers and repairers.....	43	—	—	—	—
Commercial divers.....	3	—	—	—	—
Locksmiths and safe repairers.....	30	—	—	—	—
Manufactured building and mobile home installers.....	4	—	—	—	—
Riggers.....	13	—	—	—	—
Signal and track switch repairers.....	7	—	—	—	—
Helpers--installation, maintenance, and repair workers.....	14	—	—	—	—
Other installation, maintenance, and repair workers.....	224	88.9	5.1	2.7	23.4
Production, transportation, and material moving occupations.....	17,448	76.8	15.0	4.7	22.0
Production occupations.....	8,438	78.0	12.5	6.2	21.9
First-line supervisors of production and operating workers.....	789	83.4	11.0	3.4	17.0
Aircraft structure, surfaces, rigging, and systems assemblers.....	15	—	—	—	—
Electrical, electronics, and electromechanical assemblers.....	164	65.1	15.3	16.8	22.9
Engine and other machine assemblers.....	10	—	—	—	—
Structural metal fabricators and fitters.....	24	—	—	—	—
Miscellaneous assemblers and fabricators.....	1,002	70.9	17.0	8.7	21.0
Bakers.....	224	77.3	10.1	7.5	22.9
Butchers and other meat, poultry, and fish processing workers.....	331	67.0	20.2	8.0	35.4
Food and tobacco roasting, baking, and drying machine operators and tenders.....	10	—	—	—	—
Food batchmakers.....	95	80.0	13.1	6.1	25.3
Food cooking machine operators and tenders.....	16	—	—	—	—
Food processing workers, all other.....	128	69.5	18.1	7.6	31.7
Computer control programmers and operators.....	71	94.0	2.3	2.2	14.7
Extruding and drawing machine setters, operators, and tenders, metal and plastic.....	14	—	—	—	—
Forging machine setters, operators, and tenders, metal and plastic.....	5	—	—	—	—
Rolling machine setters, operators, and tenders, metal and plastic.....	10	—	—	—	—
Cutting, punching, and press machine setters, operators, and tenders, metal and plastic.....	85	80.4	14.0	0.9	15.9
Drilling and boring machine tool setters, operators, and tenders, metal and plastic.....	2	—	—	—	—
Grinding, lapping, polishing, and buffing machine tool setters, operators, and tenders, metal and plastic.....	45	—	—	—	—
Lathe and turning machine tool setters, operators, and tenders, metal and plastic.....	9	—	—	—	—
Milling and planing machine setters, operators, and tenders, metal and plastic.....	5	—	—	—	—
Machinists.....	391	88.8	3.9	4.1	15.4
Metal furnace operators, tenders, pourers, and casters.....	27	—	—	—	—
Model makers and patternmakers, metal and plastic.....	5	—	—	—	—
Molders and molding machine setters, operators, and tenders, metal and plastic.....	38	—	—	—	—
Multiple machine tool setters, operators, and tenders, metal and plastic.....	4	—	—	—	—
Tool and die makers.....	67	99.3	0.7	0.0	3.8
Welding, soldering, and brazing workers.....	615	85.6	8.8	2.0	22.4
Heat treating equipment setters, operators, and tenders, metal and plastic.....	4	—	—	—	—
Layout workers, metal and plastic.....	9	—	—	—	—
Plating and coating machine setters, operators, and tenders, metal and plastic.....	29	—	—	—	—
Tool grinders, filers, and sharpeners.....	10	—	—	—	—
Metal workers and plastic workers, all other.....	342	78.5	13.5	5.9	23.0
Prepress technicians and workers.....	25	—	—	—	—
Printing press operators.....	187	77.5	13.2	5.7	21.7
Print binding and finishing workers.....	21	—	—	—	—
Laundry and dry-cleaning workers.....	156	67.3	16.1	11.5	38.0
Pressers, textile, garment, and related materials.....	48	—	—	—	—

See note at end of table.

LABOR FORCE CHARACTERISTICS BY RACE AND ETHNICITY, 2014

Table 8. Employed people by detailed occupation, race, and Hispanic or Latino ethnicity, 2014 annual averages — Continued
 [Numbers in thousands]

Occupation	Total employed	Percent of total employed			
		White	Black or African American	Asian	Hispanic or Latino ethnicity
Sewing machine operators.....	158	63.1	15.0	21.1	34.6
Shoe and leather workers and repairers.....	4	—	—	—	—
Shoe machine operators and tenders.....	3	—	—	—	—
Tailors, dressmakers, and sewers.....	92	72.3	9.5	16.7	30.4
Textile bleaching and dyeing machine operators and tenders.....	3	—	—	—	—
Textile cutting machine setters, operators, and tenders.....	6	—	—	—	—
Textile knitting and weaving machine setters, operators, and tenders.....	12	—	—	—	—
Textile winding, twisting, and drawing out machine setters, operators, and tenders.....	12	—	—	—	—
Extruding and forming machine setters, operators, and tenders, synthetic and glass fibers.....	0	—	—	—	—
Fabric and apparel patternmakers.....	1	—	—	—	—
Upholsterers.....	40	—	—	—	—
Textile, apparel, and furnishings workers, all other.....	14	—	—	—	—
Cabinetmakers and bench carpenters.....	51	91.1	5.6	2.4	27.8
Furniture finishers.....	7	—	—	—	—
Model makers and patternmakers, wood.....	1	—	—	—	—
Sawing machine setters, operators, and tenders, wood.....	32	—	—	—	—
Woodworking machine setters, operators, and tenders, except sawing.....	19	—	—	—	—
Woodworkers, all other.....	28	—	—	—	—
Power plant operators, distributors, and dispatchers.....	45	—	—	—	—
Stationary engineers and boiler operators.....	96	86.1	7.0	4.3	15.2
Water and wastewater treatment plant and system operators.....	72	82.0	10.7	2.3	14.7
Miscellaneous plant and system operators.....	41	—	—	—	—
Chemical processing machine setters, operators, and tenders.....	63	86.1	10.7	0.5	10.3
Crushing, grinding, polishing, mixing, and blending workers.....	69	78.4	14.1	3.5	22.4
Cutting workers.....	60	82.6	10.3	4.7	22.0
Extruding, forming, pressing, and compacting machine setters, operators, and tenders.....	40	—	—	—	—
Furnace, kiln, oven, drier, and kettle operators and tenders.....	9	—	—	—	—
Inspectors, testers, sorters, samplers, and weighers.....	752	77.4	12.7	6.8	16.8
Jewelers and precious stone and metal workers.....	44	—	—	—	—
Medical, dental, and ophthalmic laboratory technicians.....	85	81.0	3.0	14.3	12.3
Packaging and filling machine operators and tenders.....	259	66.4	19.0	8.9	36.0
Painting workers.....	156	83.0	8.1	4.3	27.0
Photographic process workers and processing machine operators.....	27	—	—	—	—
Semiconductor processors.....	1	—	—	—	—
Adhesive bonding machine operators and tenders.....	6	—	—	—	—
Cleaning, washing, and metal pickling equipment operators and tenders.....	6	—	—	—	—
Cooling and freezing equipment operators and tenders.....	4	—	—	—	—
Etchers and engravers.....	13	—	—	—	—
Molders, shapers, and casters, except metal and plastic.....	31	—	—	—	—
Paper goods machine setters, operators, and tenders.....	31	—	—	—	—
Tire builders.....	12	—	—	—	—
Helpers--production workers.....	54	63.9	10.9	9.6	32.9
Production workers, all other.....	947	76.8	15.1	5.5	23.1
Transportation and material moving occupations.....	9,010	75.8	17.3	3.4	22.1
Supervisors of transportation and material moving workers.....	199	82.3	9.0	2.0	22.1
Aircraft pilots and flight engineers.....	133	96.6	1.9	0.5	2.7
Air traffic controllers and airfield operations specialists.....	31	—	—	—	—
Flight attendants.....	92	83.2	10.2	2.5	7.9
Ambulance drivers and attendants, except emergency medical technicians.....	19	—	—	—	—
Bus drivers.....	584	67.7	25.9	2.5	12.8
Driver/sales workers and truck drivers.....	3,406	78.9	15.6	2.5	20.5
Taxi drivers and chauffeurs.....	383	55.4	28.8	13.9	16.5
Motor vehicle operators, all other.....	61	80.0	16.1	2.3	16.1
Locomotive engineers and operators.....	55	86.0	14.0	0.0	5.6
Railroad brake, signal, and switch operators.....	9	—	—	—	—
Railroad conductors and yardmasters.....	46	—	—	—	—
Subway, streetcar, and other rail transportation workers.....	19	—	—	—	—
Sailors and marine oilers.....	27	—	—	—	—
Ship and boat captains and operators.....	41	—	—	—	—
Ship engineers.....	7	—	—	—	—

See note at end of table.

Table 8. Employed people by detailed occupation, race, and Hispanic or Latino ethnicity, 2014 annual averages — Continued
 [Numbers in thousands]

Occupation	Total employed	Percent of total employed			
		White	Black or African American	Asian	Hispanic or Latino ethnicity
Bridge and lock tenders.....	6	—	—	—	—
Parking lot attendants.....	78	61.5	26.3	9.9	28.7
Automotive and watercraft service attendants.....	97	63.6	13.7	15.7	21.9
Transportation inspectors.....	47	—	—	—	—
Transportation attendants, except flight attendants.....	27	—	—	—	—
Other transportation workers.....	25	—	—	—	—
Conveyor operators and tenders.....	6	—	—	—	—
Crane and tower operators.....	74	89.3	8.4	1.0	11.2
Dredge, excavating, and loading machine operators.....	44	—	—	—	—
Hoist and winch operators.....	7	—	—	—	—
Industrial truck and tractor operators.....	564	70.1	24.4	2.2	29.3
Cleaners of vehicles and equipment.....	375	71.4	22.5	1.9	33.4
Laborers and freight, stock, and material movers, hand.....	1,867	77.1	15.6	3.2	23.8
Machine feeders and offbearers.....	17	—	—	—	—
Packers and packagers, hand.....	505	72.1	18.2	5.9	43.3
Pumping station operators.....	27	—	—	—	—
Refuse and recyclable material collectors.....	84	74.5	19.0	0.8	36.8
Mine shuttle car operators.....	1	—	—	—	—
Tank car, truck, and ship loaders.....	6	—	—	—	—
Material moving workers, all other.....	41	—	—	—	—

Note: Estimates for the above race groups (White, Black or African American, and Asian) do not sum to totals because data are not presented for all races. People whose ethnicity is identified as Hispanic or Latino may be of any race. Dash indicates no data or data that do not meet publication criteria (values not shown where base is less than 50,000).
 Source: Current Population Survey, U.S. Bureau of Labor Statistics.

LABOR FORCE CHARACTERISTICS BY RACE AND ETHNICITY, 2014

Table 9. Employed people by industry, gender, race, and Hispanic or Latino ethnicity, 2014 annual averages

Industry and gender	Total	White	Black or African American	Asian	Hispanic or Latino ethnicity
Total, 16 years and older (thousands).....	146,305	116,788	16,732	8,325	23,492
Percent.....	100.0	100.0	100.0	100.0	100.0
Agriculture, forestry, and fishing.....	1.5	1.8	0.4	0.3	2.2
Mining.....	0.7	0.8	0.4	0.2	0.9
Construction.....	6.7	7.5	3.5	2.1	11.4
Manufacturing.....	10.3	10.5	8.7	12.0	10.2
Durable goods.....	6.5	6.7	5.0	7.9	5.6
Nondurable goods.....	3.8	3.8	3.7	4.1	4.5
Wholesale and retail trade.....	13.8	13.9	13.6	13.3	14.1
Wholesale trade.....	2.5	2.6	1.9	2.1	2.5
Retail trade.....	11.4	11.3	11.7	11.2	11.7
Transportation and utilities.....	5.2	4.9	7.5	3.9	5.5
Information.....	2.1	2.1	1.9	2.6	1.4
Financial activities.....	6.7	7.0	5.3	7.5	4.8
Professional and business services.....	11.6	11.7	9.6	15.3	11.6
Education and health services.....	22.4	21.7	28.5	22.2	16.0
Leisure and hospitality.....	9.2	8.9	9.4	10.7	12.8
Other services.....	4.9	4.9	4.4	6.0	5.8
Other services, except private households.....	4.3	4.3	3.9	5.5	4.5
Private households.....	0.6	0.6	0.4	0.5	1.3
Public administration.....	4.6	4.3	6.8	3.9	3.3
Men, 16 years and older (thousands).....	77,692	63,108	7,818	4,403	13,655
Percent.....	100.0	100.0	100.0	100.0	100.0
Agriculture, forestry, and fishing.....	2.2	2.5	0.7	0.3	3.0
Mining.....	1.2	1.3	0.7	0.3	1.4
Construction.....	11.5	12.6	6.9	3.5	18.7
Manufacturing.....	13.7	13.9	12.7	14.3	11.9
Durable goods.....	9.2	9.4	7.5	10.3	7.1
Nondurable goods.....	4.6	4.5	5.2	4.0	4.8
Wholesale and retail trade.....	14.3	14.3	15.0	14.0	13.7
Wholesale trade.....	3.3	3.4	2.7	2.5	3.0
Retail trade.....	11.1	10.8	12.2	11.4	10.7
Transportation and utilities.....	7.5	7.1	11.7	5.9	7.5
Information.....	2.5	2.4	2.4	3.3	1.4
Financial activities.....	5.9	6.2	4.2	7.0	3.9
Professional and business services.....	12.9	12.7	11.3	18.4	12.3
Education and health services.....	10.7	10.1	13.9	14.6	6.6
Leisure and hospitality.....	8.4	8.0	9.7	10.4	11.6
Other services.....	4.4	4.4	4.6	4.2	4.9
Other services, except private households.....	4.3	4.3	4.4	4.1	4.7
Private households.....	0.1	0.1	0.1	0.1	0.2
Public administration.....	4.8	4.6	6.4	3.7	3.1

See note at end of table.

Table 9. Employed people by industry, gender, race, and Hispanic or Latino ethnicity, 2014 annual averages—Continued

Industry and gender	Total	White	Black or African American	Asian	Hispanic or Latino ethnicity
Women, 16 years and older (thousands).....	68,613	53,680	8,915	3,922	9,838
Percent.....	100.0	100.0	100.0	100.0	100.0
Agriculture, forestry, and fishing.....	0.8	1.0	0.1	0.2	1.2
Mining.....	0.2	0.2	0.1	0.1	0.2
Construction.....	1.3	1.5	0.5	0.6	1.2
Manufacturing.....	6.4	6.4	5.3	9.5	7.8
Durable goods.....	3.5	3.5	2.9	5.3	3.5
Nondurable goods.....	2.9	3.0	2.4	4.2	4.2
Wholesale and retail trade.....	13.3	13.5	12.3	12.5	14.7
Wholesale trade.....	1.6	1.7	1.1	1.6	1.7
Retail trade.....	11.7	11.8	11.2	10.9	13.1
Transportation and utilities.....	2.5	2.4	3.8	1.7	2.8
Information.....	1.8	1.8	1.5	1.8	1.4
Financial activities.....	7.7	7.9	6.4	8.0	5.9
Professional and business services.....	10.2	10.5	8.2	11.8	10.6
Education and health services.....	35.7	35.3	41.4	30.7	29.1
Leisure and hospitality.....	10.1	10.0	9.1	11.0	14.5
Other services.....	5.5	5.6	4.2	8.1	7.1
Other services, except private households.....	4.4	4.4	3.5	7.2	4.3
Private households.....	1.1	1.2	0.7	0.9	2.8
Public administration.....	4.5	3.9	7.1	4.1	3.5

Note: Estimates for the above race groups (White, Black or African American, and Asian) do not sum to totals because data are not presented for all races. People whose ethnicity is identified as Hispanic or Latino may be of any race.

Source: Current Population Survey, U.S. Bureau of Labor Statistics.

LABOR FORCE CHARACTERISTICS BY RACE AND ETHNICITY, 2014

Table 10. Employment and unemployment in families by type of family, race, and Hispanic or Latino ethnicity, 2014 annual averages

(Numbers in thousands)

Family type and employment status of family members	Total	White	Black or African American	Asian	Hispanic or Latino ethnicity
Total families	80,889	64,476	9,793	4,374	12,178
With at least one family member employed	64,832	51,661	7,481	3,872	10,456
As a percent of total families	80.1	80.1	76.4	88.5	85.9
With at least one family member unemployed	6,486	4,499	1,376	328	1,311
As a percent of total families	8.0	7.0	14.1	7.5	10.8
Some family member(s) employed	4,419	3,195	780	262	933
As a percent of families with at least one member unemployed	68.1	71.0	56.7	79.9	71.2
Some family member(s) employed full time	3,819	2,767	666	232	798
As a percent of families with at least one member unemployed.....	58.9	61.5	48.4	70.7	60.9
Married-couple families	58,806	49,622	4,361	3,512	7,430
With at least one family member employed	47,852	40,033	3,556	3,138	6,637
As a percent of total families	81.4	80.7	81.5	89.4	89.3
With at least one family member unemployed	3,765	2,915	462	242	725
As a percent of total families	6.4	5.9	10.6	6.9	9.8
Some family member(s) employed	3,028	2,356	354	203	601
As a percent of families with at least one member unemployed	80.4	80.8	76.6	83.9	82.9
Some family member(s) employed full time	2,689	2,087	320	185	530
As a percent of families with at least one member unemployed.....	71.4	71.6	69.3	76.4	73.1
Families maintained by women	15,581	10,118	4,278	525	3,223
With at least one family member employed	11,585	7,650	3,031	429	2,459
As a percent of total families	74.4	75.6	70.9	81.7	76.3
With at least one family member unemployed	1,933	1,064	724	48	409
As a percent of total families	12.4	10.5	16.9	9.1	12.7
Some family member(s) employed	936	541	319	30	214
As a percent of families with at least one member unemployed	48.4	50.8	44.1	62.5	52.3
Some family member(s) employed full time	742	427	255	23	166
As a percent of families with at least one member unemployed.....	38.4	40.1	35.2	47.9	40.6
Families maintained by men	6,502	4,736	1,153	338	1,525
With at least one family member employed	5,394	3,979	895	305	1,360
As a percent of total families	83.0	84.0	77.6	90.2	89.2
With at least one family member unemployed	789	519	190	38	177
As a percent of total families	12.1	11.0	16.5	11.2	11.6
Some family member(s) employed	455	297	107	28	117
As a percent of families with at least one member unemployed	57.7	57.2	56.3	73.7	66.1
Some family member(s) employed full time	388	253	91	25	101
As a percent of families with at least one member unemployed.....	49.2	48.7	47.9	65.8	57.1

Note: The race or ethnicity of the family is determined by that of the householder, the family reference person in whose name the housing unit is owned or rented. Estimates for the above race groups (White, Black or African American, and Asian) do not sum to totals because data are not presented for all races. People whose ethnicity is identified as Hispanic or Latino may be of any race. Source: Current Population Survey, U.S. Bureau of Labor Statistics.

LABOR FORCE CHARACTERISTICS BY RACE AND ETHNICITY, 2014

Table 11. Labor force participation rates by presence and age of youngest child, gender, race, and Hispanic or Latino ethnicity, 1994–2014 annual averages

(Percent)

Year	Total			White			Black or African American		
	Total	Men	Women	Total	Men	Women	Total	Men	Women
With no children under 18 years									
1994.....	60.2	67.1	53.6	60.6	67.7	53.8	57.2	62.0	52.4
1995.....	60.2	67.0	53.5	60.5	67.6	53.6	57.5	62.3	52.7
1996.....	60.1	66.8	53.5	60.5	67.6	53.6	56.9	61.5	52.3
1997.....	60.4	67.0	53.8	60.8	67.8	53.8	57.3	61.2	53.5
1998.....	60.3	67.0	53.9	60.6	67.6	53.8	58.0	62.0	54.2
1999.....	60.4	66.8	54.1	60.7	67.5	53.9	58.3	62.1	54.6
2000.....	60.6	67.0	54.3	60.9	67.7	54.3	58.4	62.5	54.5
2001.....	60.4	66.7	54.3	60.8	67.4	54.3	57.9	61.7	54.4
2002.....	60.0	66.2	53.9	60.4	66.8	54.0	56.8	61.0	52.7
2003.....	59.7	65.4	54.1	60.1	66.1	54.1	56.5	60.0	53.2
2004.....	59.6	65.3	54.0	60.0	66.1	54.0	56.4	59.5	53.5
2005.....	59.8	65.5	54.2	60.1	66.2	54.1	57.3	60.8	53.9
2006.....	60.0	65.8	54.2	60.4	66.5	54.2	57.1	60.5	53.9
2007.....	59.8	65.6	54.0	60.3	66.4	54.1	56.5	60.1	53.0
2008.....	59.9	65.6	54.3	60.3	66.3	54.3	56.9	60.4	53.6
2009.....	59.3	64.6	54.0	59.9	65.4	54.3	55.9	59.3	52.7
2010.....	58.7	63.8	53.6	59.1	64.5	53.7	56.0	59.1	52.9
2011.....	58.1	63.1	53.0	58.6	63.8	53.2	55.1	58.4	51.8
2012.....	57.7	62.9	52.6	58.1	63.7	52.4	55.2	57.6	52.8
2013.....	57.2	62.3	52.1	57.4	62.9	52.0	54.5	57.1	52.0
2014.....	56.7	61.7	51.7	56.9	62.2	51.6	54.8	57.5	52.1
With children under 18 years									
1994.....	79.8	94.1	69.0	80.9	94.8	69.5	74.9	89.5	68.4
1995.....	80.3	94.1	69.8	81.3	94.9	70.3	76.3	89.6	70.3
1996.....	81.1	94.5	70.8	81.8	95.3	70.7	78.5	89.7	73.3
1997.....	81.8	94.6	71.9	82.4	95.4	71.7	79.6	89.6	75.0
1998.....	81.8	94.6	71.8	82.2	95.3	71.3	81.0	90.4	76.7
1999.....	82.0	94.6	72.2	82.3	95.4	71.5	82.0	89.3	78.5
2000.....	82.1	94.7	72.3	82.3	95.3	71.6	82.2	90.3	78.2
2001.....	81.9	94.6	72.1	82.2	95.3	71.5	81.8	89.7	77.9
2002.....	81.6	94.3	71.8	81.9	94.8	71.1	81.9	90.3	77.7
2003.....	81.2	94.1	71.1	81.4	94.7	70.3	81.5	89.7	77.5
2004.....	80.7	94.1	70.4	81.1	94.8	69.8	80.5	88.4	76.5
2005.....	80.7	94.1	70.5	81.1	94.8	69.8	80.4	88.7	76.3
2006.....	81.0	94.1	70.9	81.4	94.9	70.2	80.5	88.1	76.9
2007.....	81.4	94.3	71.0	81.7	95.0	70.3	81.2	89.6	76.6
2008.....	81.5	94.1	71.4	81.8	94.8	70.8	81.1	89.7	76.7
2009.....	81.3	93.8	71.4	81.8	94.5	70.9	80.2	87.7	76.3
2010.....	80.9	93.7	70.8	81.4	94.5	70.5	79.7	89.0	74.9
2011.....	80.6	93.5	70.6	81.1	94.3	70.2	79.6	87.9	75.3
2012.....	80.5	93.3	70.5	81.0	94.0	70.3	80.0	88.9	75.4
2013.....	80.0	92.8	69.9	80.6	93.6	69.6	80.0	87.9	75.6
2014.....	80.1	92.8	70.1	80.6	93.5	69.8	79.9	87.9	75.4

See note at end of table.

LABOR FORCE CHARACTERISTICS BY RACE AND ETHNICITY, 2014

Table 11. Labor force participation rates by presence and age of youngest child, gender, race, and Hispanic or Latino ethnicity, 1994–2014 annual averages—Continued

(Percent)

Year	Total			White			Black or African American		
	Total	Men	Women	Total	Men	Women	Total	Men	Women
With children 6 to 17 years, none younger									
1994.....	83.5	93.1	76.1	84.3	93.9	76.5	79.6	88.0	75.5
1995.....	83.7	93.0	76.6	84.6	93.7	77.2	80.1	88.1	76.4
1996.....	84.5	93.5	77.5	85.3	94.4	77.7	81.3	87.9	78.1
1997.....	84.7	93.6	77.9	85.4	94.4	78.0	81.8	88.1	78.7
1998.....	84.5	93.5	77.6	84.9	94.2	77.3	83.1	88.2	80.6
1999.....	84.8	93.4	78.2	85.4	94.4	78.1	83.2	86.7	81.4
2000.....	85.1	93.5	78.7	85.7	94.3	78.6	83.3	87.8	81.0
2001.....	85.0	93.6	78.3	85.5	94.5	78.1	83.3	87.5	81.1
2002.....	84.8	93.3	78.2	85.1	94.0	77.8	84.3	89.2	81.8
2003.....	84.5	93.1	77.8	84.7	93.7	77.3	84.0	88.0	82.1
2004.....	84.1	93.1	77.3	84.5	93.9	76.9	82.7	86.3	80.9
2005.....	83.7	93.0	76.5	84.1	93.8	76.3	82.4	86.9	80.2
2006.....	83.8	93.1	76.7	84.3	94.0	76.3	82.4	85.7	80.8
2007.....	84.3	93.2	77.2	84.6	94.0	76.7	83.7	87.7	81.5
2008.....	84.3	93.1	77.3	84.7	93.9	77.0	83.1	87.8	80.6
2009.....	84.2	92.7	77.3	84.7	93.7	77.0	82.2	85.7	80.3
2010.....	83.7	92.8	76.5	84.2	93.6	76.3	81.9	87.1	79.2
2011.....	83.3	92.6	76.1	83.9	93.5	76.0	81.5	86.5	78.8
2012.....	82.7	92.3	75.1	83.2	93.0	75.1	81.9	87.3	79.1
2013.....	82.3	91.9	74.7	83.0	92.8	74.8	81.4	86.4	78.6
2014.....	82.2	91.6	74.7	82.7	92.4	74.6	81.7	86.5	79.0
With children under 6 years									
1994.....	75.8	95.2	61.2	77.1	95.9	61.6	70.0	91.3	61.2
1995.....	76.6	95.5	62.3	77.7	96.1	62.6	72.0	91.4	63.9
1996.....	77.2	95.6	63.2	77.9	96.3	62.7	75.4	91.9	68.2
1997.....	78.3	95.8	64.8	78.8	96.5	64.1	77.1	91.3	70.8
1998.....	78.6	96.1	64.9	78.9	96.6	64.1	78.5	93.0	72.0
1999.....	78.5	96.1	64.8	78.5	96.7	63.4	80.6	92.5	74.9
2000.....	78.4	96.1	64.6	78.2	96.5	63.0	80.9	93.3	74.9
2001.....	78.1	95.8	64.3	78.1	96.2	63.0	80.0	92.5	73.9
2002.....	77.7	95.5	63.7	77.9	95.9	62.7	78.9	91.8	72.5
2003.....	77.2	95.4	62.8	77.3	96.0	61.5	78.2	92.1	71.8
2004.....	76.5	95.4	61.8	76.8	96.0	60.7	77.6	91.1	70.8
2005.....	77.0	95.4	62.8	77.2	96.1	61.6	77.8	91.2	71.4
2006.....	77.5	95.4	63.5	77.7	95.9	62.5	78.0	91.1	71.8
2007.....	77.8	95.7	63.3	77.9	96.2	62.3	77.9	92.3	70.4
2008.....	77.9	95.4	64.0	78.0	95.9	62.9	78.6	92.4	71.7
2009.....	77.8	95.1	64.2	78.1	95.6	63.3	77.7	90.4	71.4
2010.....	77.5	94.7	63.9	78.0	95.5	63.4	77.1	91.3	69.8
2011.....	77.4	94.5	63.9	77.7	95.2	63.0	77.4	89.7	71.1
2012.....	77.7	94.6	64.8	78.2	95.1	64.3	77.6	91.0	71.0
2013.....	77.2	93.9	63.9	77.5	94.7	62.9	78.5	89.8	72.1
2014.....	77.5	94.2	64.2	78.0	94.9	63.7	77.6	89.6	71.0

See note at end of table.

Table 11. Labor force participation rates by presence and age of youngest child, gender, race, and Hispanic or Latino ethnicity, 1994–2014 annual averages—Continued

(Percent)

Year	Total			White			Black or African American		
	Total	Men	Women	Total	Men	Women	Total	Men	Women
With children under 3 years									
1994.....	74.0	95.3	57.7	75.6	96.0	58.6	66.0	91.5	55.6
1995.....	74.8	95.5	58.9	76.0	96.2	59.2	68.9	90.9	60.0
1996.....	75.4	95.8	59.4	76.2	96.5	59.2	72.1	92.2	63.1
1997.....	76.6	95.9	61.4	77.5	96.5	61.4	73.6	92.1	65.1
1998.....	77.2	96.2	61.9	77.7	96.7	61.5	75.8	93.2	67.5
1999.....	77.0	96.4	61.5	77.0	97.0	60.1	78.7	92.4	72.0
2000.....	76.3	96.4	60.4	76.3	96.7	59.0	77.6	93.6	69.8
2001.....	76.0	95.9	60.2	76.1	96.4	58.9	77.3	92.6	69.7
2002.....	76.1	95.8	60.2	76.3	96.2	59.2	76.9	93.2	68.6
2003.....	75.2	95.7	58.9	75.6	96.2	57.8	74.7	91.4	67.0
2004.....	74.4	95.7	57.5	74.9	96.3	56.8	74.7	91.0	66.4
2005.....	74.8	95.5	58.4	75.1	96.4	57.2	74.7	90.6	67.0
2006.....	75.8	95.5	60.2	76.2	96.2	59.3	75.0	90.6	67.2
2007.....	75.6	95.9	59.2	76.0	96.4	58.3	74.8	92.8	65.7
2008.....	76.1	95.7	60.4	76.4	96.2	59.4	75.0	92.4	66.7
2009.....	76.1	95.0	61.1	76.6	95.5	60.5	74.5	90.2	66.6
2010.....	75.7	94.7	60.7	76.4	95.7	60.3	74.2	91.0	65.6
2011.....	75.7	94.7	60.6	76.1	95.3	60.0	75.0	89.2	67.5
2012.....	76.0	95.0	61.4	76.6	95.5	61.2	75.5	92.2	67.0
2013.....	75.8	94.0	61.1	76.2	94.9	60.3	76.6	89.9	68.8
2014.....	76.0	94.4	61.0	76.6	95.0	60.8	75.9	90.2	67.6

See note at end of table.

LABOR FORCE CHARACTERISTICS BY RACE AND ETHNICITY, 2014

Table 11. Labor force participation rates by presence and age of youngest child, gender, race, and Hispanic or Latino ethnicity, 1994–2014 annual averages—Continued

(Percent)

Year	Asian			Hispanic or Latino ethnicity		
	Total	Men	Women	Total	Men	Women
With no children under 18 years						
1994.....	—	—	—	62.3	71.5	51.5
1995.....	—	—	—	61.2	70.9	50.2
1996.....	—	—	—	61.6	71.3	50.5
1997.....	—	—	—	62.6	72.1	51.4
1998.....	—	—	—	62.8	72.1	51.7
1999.....	—	—	—	62.5	71.6	52.2
2000.....	—	—	—	63.7	73.2	52.6
2001.....	—	—	—	63.0	72.4	52.6
2002.....	61.2	67.8	55.0	63.9	72.7	53.2
2003.....	59.7	66.4	53.7	62.8	72.1	51.5
2004.....	59.1	65.0	53.5	63.5	72.6	52.5
2005.....	59.9	66.0	54.3	63.0	72.1	51.9
2006.....	60.0	66.2	54.1	63.7	73.0	52.2
2007.....	60.2	66.6	54.0	63.7	72.8	52.4
2008.....	60.3	66.6	54.4	63.5	72.7	52.1
2009.....	59.0	65.3	53.1	62.6	70.7	52.8
2010.....	58.1	64.3	52.4	62.0	69.8	52.3
2011.....	58.0	63.9	52.6	60.8	68.3	51.6
2012.....	58.1	63.2	53.4	60.7	68.1	52.0
2013.....	58.8	64.5	53.6	60.6	68.2	51.9
2014.....	57.0	63.0	51.7	60.5	68.0	51.8
With children under 18 years						
1994.....	—	—	—	70.2	92.1	54.7
1995.....	—	—	—	71.0	92.2	55.6
1996.....	—	—	—	72.3	93.7	56.7
1997.....	—	—	—	74.0	93.4	59.6
1998.....	—	—	—	74.2	92.9	60.2
1999.....	—	—	—	74.6	93.8	60.3
2000.....	—	—	—	75.7	93.8	62.0
2001.....	—	—	—	75.7	93.6	62.0
2002.....	78.3	93.2	66.6	75.8	93.2	62.7
2003.....	78.9	93.5	67.0	75.1	93.4	61.2
2004.....	77.9	93.8	64.9	74.9	93.9	60.4
2005.....	77.9	93.1	65.6	74.5	94.2	59.6
2006.....	78.3	93.2	66.3	75.3	94.2	60.9
2007.....	78.9	93.1	67.1	76.5	94.8	61.4
2008.....	80.0	93.0	68.8	76.4	94.4	61.4
2009.....	80.1	94.1	68.0	76.5	94.2	61.5
2010.....	78.2	92.2	66.2	76.6	93.9	62.1
2011.....	78.3	93.0	65.4	76.1	93.5	61.8
2012.....	76.7	93.0	63.2	76.4	93.7	63.2
2013.....	77.0	92.7	64.2	75.3	92.9	61.2
2014.....	77.4	93.3	64.3	75.8	93.1	62.0

See note at end of table.

LABOR FORCE CHARACTERISTICS BY RACE AND ETHNICITY, 2014

Table 11. Labor force participation rates by presence and age of youngest child, gender, race, and Hispanic or Latino ethnicity, 1994–2014 annual averages—Continued

(Percent)

Year	Asian			Hispanic or Latino ethnicity		
	Total	Men	Women	Total	Men	Women
With children 6 to 17 years, none younger						
1994.....	—	—	—	74.9	89.7	64.5
1995.....	—	—	—	75.4	89.7	65.5
1996.....	—	—	—	77.3	92.3	66.7
1997.....	—	—	—	77.6	91.2	68.2
1998.....	—	—	—	77.5	90.6	68.1
1999.....	—	—	—	78.6	91.2	69.5
2000.....	—	—	—	79.3	91.5	70.5
2001.....	—	—	—	79.6	91.7	70.9
2002.....	82.6	91.6	75.7	79.0	91.1	70.2
2003.....	82.9	93.5	74.3	78.8	91.5	69.4
2004.....	82.6	93.8	73.4	79.6	92.8	70.2
2005.....	80.7	92.3	71.2	78.8	92.9	68.7
2006.....	80.8	91.8	72.0	79.1	92.6	69.4
2007.....	81.8	91.7	73.6	80.5	93.1	70.4
2008.....	82.7	91.8	74.9	80.4	93.2	70.0
2009.....	82.7	92.9	74.0	80.7	93.6	69.9
2010.....	81.8	92.2	73.1	80.1	92.6	69.9
2011.....	80.8	92.2	71.2	79.2	91.9	69.0
2012.....	78.4	91.6	67.7	79.4	92.7	69.1
2013.....	78.8	91.7	68.4	78.1	91.8	67.5
2014.....	80.1	92.6	70.1	78.4	91.9	68.2
With children under 6 years						
1994.....	—	—	—	66.6	94.0	47.0
1995.....	—	—	—	67.6	94.1	47.7
1996.....	—	—	—	68.5	94.8	48.7
1997.....	—	—	—	70.9	95.1	52.3
1998.....	—	—	—	71.3	94.9	53.0
1999.....	—	—	—	71.2	95.9	52.1
2000.....	—	—	—	72.5	95.7	54.5
2001.....	—	—	—	72.2	95.2	53.8
2002.....	73.5	94.8	56.3	73.1	94.8	56.1
2003.....	74.2	93.4	58.5	71.9	94.9	53.4
2004.....	73.1	93.8	56.0	70.6	94.8	51.2
2005.....	74.9	94.0	59.3	70.6	95.4	50.9
2006.....	75.6	94.8	59.9	71.7	95.6	52.7
2007.....	75.8	94.8	59.9	72.9	96.1	53.0
2008.....	77.1	94.3	61.9	72.7	95.5	53.0
2009.....	77.3	95.4	61.4	72.4	94.9	53.1
2010.....	74.3	92.2	58.3	73.2	95.2	54.6
2011.....	75.4	93.8	58.4	73.2	95.0	54.7
2012.....	74.7	94.5	57.8	73.3	94.6	57.0
2013.....	74.9	93.8	59.3	72.3	94.0	54.5
2014.....	74.3	94.0	57.4	73.1	94.4	55.2

See note at end of table.

Table 11. Labor force participation rates by presence and age of youngest child, gender, race, and Hispanic or Latino ethnicity, 1994–2014 annual averages—Continued

(Percent)

Year	Asian			Hispanic or Latino ethnicity		
	Total	Men	Women	Total	Men	Women
With children under 3 years						
1994.....	—	—	—	64.4	94.1	42.2
1995.....	—	—	—	65.7	94.1	43.7
1996.....	—	—	—	66.2	94.6	44.7
1997.....	—	—	—	68.6	94.6	48.0
1998.....	—	—	—	69.5	95.0	48.9
1999.....	—	—	—	68.8	96.2	47.4
2000.....	—	—	—	70.4	96.2	50.0
2001.....	—	—	—	69.7	95.3	48.7
2002.....	72.1	95.4	53.5	70.3	95.1	50.3
2003.....	73.0	94.5	55.1	69.5	95.2	47.9
2004.....	70.2	93.8	50.4	68.2	95.2	46.0
2005.....	72.4	92.9	55.8	67.7	96.0	45.0
2006.....	73.4	94.2	56.8	69.5	95.9	48.6
2007.....	73.6	94.2	56.2	69.9	96.0	47.6
2008.....	75.9	94.4	59.5	70.3	95.9	47.9
2009.....	76.1	95.9	58.2	70.0	94.4	49.1
2010.....	72.2	91.2	55.3	71.3	95.3	50.8
2011.....	73.8	95.3	54.1	71.3	95.5	50.1
2012.....	72.4	94.3	53.7	71.2	95.5	52.4
2013.....	72.5	92.6	55.5	70.3	94.3	50.4
2014.....	72.6	94.5	53.4	70.8	95.1	50.6

Note: Beginning in 2003, estimates for White, Black or African American, and Asian race groups include people who selected that race group only; persons who selected more than one race group are not included in these groups. Prior to 2003, people who reported more than one race were included in the group they identified as the main race. Asian estimates for 2000–2002 are for Asians and Pacific Islanders; beginning in 2003, Asian is a separate category. Persons whose ethnicity is identified as Hispanic or Latino may be of any race. Children are "own" children and include sons, daughters, stepchildren, and adopted children. Not included are nieces, nephews, grandchildren, and other related and unrelated children. Dash indicates data not available.

Source: Current Population Survey, U.S. Bureau of Labor Statistics.

LABOR FORCE CHARACTERISTICS BY RACE AND ETHNICITY, 2014

Table 12. Unemployment rates by gender, race, and Hispanic or Latino ethnicity, 1972–2014 annual averages
(Percent)

Year	Total			White			Black or African American			Asian			Hispanic or Latino ethnicity		
	Total	Men	Women	Total	Men	Women	Total	Men	Women	Total	Men	Women	Total	Men	Women
1972.....	5.6	5.0	6.6	5.1	4.5	5.9	10.4	9.3	11.8	—	—	—	—	—	—
1973.....	4.9	4.2	6.0	4.3	3.8	5.3	9.4	8.0	11.1	—	—	—	7.5	6.7	9.0
1974.....	5.6	4.9	6.7	5.0	4.4	6.1	10.5	9.8	11.3	—	—	—	8.1	7.3	9.4
1975.....	8.5	7.9	9.3	7.8	7.2	8.6	14.8	14.8	14.8	—	—	—	12.2	11.4	13.5
1976.....	7.7	7.1	8.6	7.0	6.4	7.9	14.0	13.7	14.3	—	—	—	11.5	10.8	12.7
1977.....	7.1	6.3	8.2	6.2	5.5	7.3	14.0	13.3	14.9	—	—	—	10.1	9.0	11.9
1978.....	6.1	5.3	7.2	5.2	4.6	6.2	12.8	11.8	13.8	—	—	—	9.1	7.7	11.3
1979.....	5.8	5.1	6.8	5.1	4.5	5.9	12.3	11.4	13.3	—	—	—	8.3	7.0	10.3
1980.....	7.1	6.9	7.4	6.3	6.1	6.5	14.3	14.5	14.0	—	—	—	10.1	9.7	10.7
1981.....	7.6	7.4	7.9	6.7	6.5	6.9	15.6	15.7	15.6	—	—	—	10.4	10.2	10.8
1982.....	9.7	9.9	9.4	8.6	8.8	8.3	18.9	20.1	17.6	—	—	—	13.8	13.6	14.1
1983.....	9.6	9.9	9.2	8.4	8.8	7.9	19.5	20.3	18.6	—	—	—	13.7	13.6	13.8
1984.....	7.5	7.4	7.6	6.5	6.4	6.5	15.9	16.4	15.4	—	—	—	10.7	10.5	11.1
1985.....	7.2	7.0	7.4	6.2	6.1	6.4	15.1	15.3	14.9	—	—	—	10.5	10.2	11.0
1986.....	7.0	6.9	7.1	6.0	6.0	6.1	14.5	14.8	14.2	—	—	—	10.6	10.5	10.8
1987.....	6.2	6.2	6.2	5.3	5.4	5.2	13.0	12.7	13.2	—	—	—	8.8	8.7	8.9
1988.....	5.5	5.5	5.6	4.7	4.7	4.7	11.7	11.7	11.7	—	—	—	8.2	8.1	8.3
1989.....	5.3	5.2	5.4	4.5	4.5	4.5	11.4	11.5	11.4	—	—	—	8.0	7.6	8.8
1990.....	5.6	5.7	5.5	4.8	4.9	4.7	11.4	11.9	10.9	—	—	—	8.2	8.0	8.4
1991.....	6.8	7.2	6.4	6.1	6.5	5.6	12.5	13.0	12.0	—	—	—	10.0	10.3	9.6
1992.....	7.5	7.9	7.0	6.6	7.0	6.1	14.2	15.2	13.2	—	—	—	11.6	11.7	11.4
1993.....	6.9	7.2	6.6	6.1	6.3	5.7	13.0	13.8	12.1	—	—	—	10.8	10.6	11.0
1994.....	6.1	6.2	6.0	5.3	5.4	5.2	11.5	12.0	11.0	—	—	—	9.9	9.4	10.7
1995.....	5.6	5.6	5.6	4.9	4.9	4.8	10.4	10.6	10.2	—	—	—	9.3	8.8	10.0
1996.....	5.4	5.4	5.4	4.7	4.7	4.7	10.5	11.1	10.0	—	—	—	8.9	7.9	10.2
1997.....	4.9	4.9	5.0	4.2	4.2	4.2	10.0	10.2	9.9	—	—	—	7.7	7.0	8.9
1998.....	4.5	4.4	4.6	3.9	3.9	3.9	8.9	8.9	9.0	—	—	—	7.2	6.4	8.2
1999.....	4.2	4.1	4.3	3.7	3.6	3.8	8.0	8.2	7.8	—	—	—	6.4	5.6	7.6
2000.....	4.0	3.9	4.1	3.5	3.4	3.6	7.6	8.0	7.1	3.6	3.6	3.6	5.7	5.0	6.8
2001.....	4.7	4.8	4.7	4.2	4.2	4.1	8.6	9.3	8.1	4.5	4.5	4.4	6.6	5.9	7.5
2002.....	5.8	5.9	5.6	5.1	5.3	4.9	10.2	10.7	9.8	5.9	6.1	5.7	7.5	7.2	8.0
2003.....	6.0	6.3	5.7	5.2	5.6	4.8	10.8	11.6	10.2	6.0	6.2	5.7	7.7	7.2	8.4
2004.....	5.5	5.6	5.4	4.8	5.0	4.7	10.4	11.1	9.8	4.4	4.5	4.3	7.0	6.5	7.6
2005.....	5.1	5.1	5.1	4.4	4.4	4.4	10.0	10.5	9.5	4.0	4.0	3.9	6.0	5.4	6.9
2006.....	4.6	4.6	4.6	4.0	4.0	4.0	8.9	9.5	8.4	3.0	3.0	3.1	5.2	4.8	5.9
2007.....	4.6	4.7	4.5	4.1	4.2	4.0	8.3	9.1	7.5	3.2	3.1	3.4	5.6	5.3	6.1
2008.....	5.8	6.1	5.4	5.2	5.5	4.9	10.1	11.4	8.9	4.0	4.1	3.7	7.6	7.6	7.7
2009.....	9.3	10.3	8.1	8.5	9.4	7.3	14.8	17.5	12.4	7.3	7.9	6.6	12.1	12.5	11.5
2010.....	9.6	10.5	8.6	8.7	9.6	7.7	16.0	18.4	13.8	7.5	7.8	7.1	12.5	12.7	12.3
2011.....	8.9	9.4	8.5	7.9	8.3	7.5	15.8	17.8	14.1	7.0	6.8	7.3	11.5	11.2	11.8
2012.....	8.1	8.2	7.9	7.2	7.4	7.0	13.8	15.0	12.8	5.9	5.8	6.1	10.3	9.9	10.9
2013.....	7.4	7.6	7.1	6.5	6.8	6.2	13.1	14.2	12.1	5.2	5.6	4.8	9.1	8.8	9.5
2014.....	6.2	6.3	6.1	5.3	5.4	5.2	11.3	12.2	10.5	5.0	5.3	4.6	7.4	6.8	8.2

See note at end of table.

Table 12. Unemployment rates by gender, race, and Hispanic or Latino ethnicity, 1972–2014 annual averages—Continued
(Percent)

Year	American Indian and Alaska Native			Native Hawaiian and Other Pacific Islander			Two or More Races		
	Total	Men	Women	Total	Men	Women	Total	Men	Women
2003.....	10.5	11.2	9.6	7.7	6.9	8.6	9.1	9.3	8.9
2004.....	9.6	9.7	9.4	6.1	6.8	5.4	8.7	8.7	8.7
2005.....	9.3	8.7	10.1	4.3	4.8	3.9	8.0	7.9	8.2
2006.....	7.9	7.9	8.0	5.3	6.3	4.3	6.7	7.3	6.0
2007.....	8.1	7.9	8.4	4.8	5.4	4.3	7.1	7.4	6.8
2008.....	9.9	10.8	8.8	6.4	7.7	4.9	9.5	10.1	8.7
2009.....	13.3	15.5	10.8	10.8	11.6	10.0	13.6	14.2	12.9
2010.....	15.1	17.3	12.7	12.0	13.6	10.4	13.6	14.2	13.0
2011.....	14.6	15.4	13.7	10.4	11.4	9.3	13.6	14.0	13.1
2012.....	12.3	11.9	12.7	11.8	12.4	11.2	11.9	12.1	11.5
2013.....	12.8	13.3	12.1	10.2	11.1	9.3	11.0	11.4	10.5
2014.....	11.3	11.9	10.6	6.1	5.7	6.6	10.2	10.9	9.5

Note: Beginning in 2003, estimates for White, Black or African American, Asian, American Indian and Alaska Native, and Native Hawaiian and Other Pacific Islander race groups include people who selected that race group only; people who selected more than one race group are included in the Two or More Races category. Prior to 2003, people who reported more than one race were included in the group they identified as the main race. Asian estimates for 2000–2002 are for Asians and Pacific Islanders; beginning in 2003, Asian is a separate category, as is Native Hawaiian and Other Pacific Islander. People whose ethnicity is identified as Hispanic or Latino may be of any race. Dash indicates data not available.

Source: Current Population Survey, U.S. Bureau of Labor Statistics.

Table 13. Unemployed people by duration of unemployment, gender, race, and Hispanic or Latino ethnicity, 2014 annual averages

Duration of unemployment	Total	White	Black or African American	Asian	Hispanic or Latino ethnicity
Total, 16 years and older (In thousands).....	9,617	6,540	2,141	436	1,878
Percent.....	100.0	100.0	100.0	100.0	100.0
Less than 5 weeks.....	25.7	27.5	20.4	23.3	28.9
5 to 14 weeks.....	25.3	25.9	22.8	24.3	25.7
15 to 26 weeks.....	15.6	15.1	17.3	14.6	15.5
27 weeks and over.....	33.5	31.5	39.6	37.7	29.9
Average (mean) duration, in weeks ¹	33.7	32.3	37.9	38.3	30.4
Median duration, in weeks.....	14.0	12.9	19.5	16.3	12.4
Men, 16 years and older (In thousands).....	5,190	3,572	1,091	246	996
Percent.....	100.0	100.0	100.0	100.0	100.0
Less than 5 weeks.....	25.7	27.4	20.3	22.4	30.5
5 to 14 weeks.....	24.6	25.2	22.0	24.0	24.8
15 to 26 weeks.....	15.7	15.3	17.1	15.3	15.2
27 weeks and over.....	34.0	32.2	40.6	38.3	29.5
Average (mean) duration, in weeks ¹	34.3	33.2	38.5	39.7	29.8
Median duration, in weeks.....	14.4	13.3	20.4	17.3	12.0
Women, 16 years and older (In thousands).....	4,426	2,968	1,050	190	882
Percent.....	100.0	100.0	100.0	100.0	100.0
Less than 5 weeks.....	25.7	27.6	20.5	24.6	27.2
5 to 14 weeks.....	26.0	26.8	23.6	24.8	26.7
15 to 26 weeks.....	15.4	14.9	17.4	13.8	15.8
27 weeks and over.....	32.8	30.7	38.5	36.9	30.3
Average (mean) duration, in weeks ¹	33.0	31.3	37.4	36.4	31.1
Median duration, in weeks.....	13.7	12.4	18.5	15.0	12.8

¹ Beginning in January 2011, this series reflects a change to the collection of data on unemployment duration. For more information, see <http://www.bls.gov/cps/duration.htm>.

Note: Estimates for the above race groups (White, Black or African American, and Asian) do not sum to totals because data are not presented for all races. People whose ethnicity is identified as Hispanic or Latino may be of any race.

Source: Current Population Survey, U.S. Bureau of Labor Statistics.

LABOR FORCE CHARACTERISTICS BY RACE AND ETHNICITY, 2014

Table 14. Unemployed people by reason for unemployment, gender, race, and Hispanic or Latino ethnicity, 2014 annual averages

Reason for unemployment	Total	White	Black or African American	Asian	Hispanic or Latino ethnicity
Total, 16 years and older (In thousands).....	9,617	6,540	2,141	436	1,878
Percent.....	100.0	100.0	100.0	100.0	100.0
Job losers and persons who completed temporary jobs.....	50.7	52.8	46.9	46.0	50.0
On temporary layoff.....	10.5	12.4	6.0	5.2	10.9
Not on temporary layoff.....	40.3	40.4	41.0	40.8	39.1
Permanent job losers.....	29.2	29.8	28.3	32.4	26.3
Persons who completed temporary jobs.....	11.0	10.6	12.7	8.4	12.8
Job leavers.....	8.6	9.1	6.6	9.2	7.2
Reentrants.....	29.4	28.1	33.0	29.5	29.9
New entrants.....	11.3	10.1	13.4	15.3	13.0
Men, 16 years and older (In thousands).....	5,190	3,572	1,091	246	996
Percent.....	100.0	100.0	100.0	100.0	100.0
Job losers and persons who completed temporary jobs.....	56.4	58.9	50.9	50.8	59.3
On temporary layoff.....	11.9	14.0	6.6	4.1	12.8
Not on temporary layoff.....	44.5	44.8	44.4	46.7	46.6
Permanent job losers.....	31.7	32.4	29.8	37.8	30.7
Persons who completed temporary jobs.....	12.7	12.4	14.6	8.9	15.9
Job leavers.....	8.0	8.5	5.7	8.9	6.5
Reentrants.....	24.7	23.0	29.5	24.8	22.5
New entrants.....	11.0	9.6	13.9	15.9	11.6
Women, 16 years and older (In thousands).....	4,426	2,968	1,050	190	882
Percent.....	100.0	100.0	100.0	100.0	100.0
Job losers and persons who completed temporary jobs.....	44.1	45.4	42.9	40.0	39.5
On temporary layoff.....	8.8	10.3	5.3	6.8	8.8
Not on temporary layoff.....	35.3	35.1	37.5	33.2	30.6
Permanent job losers.....	26.3	26.5	26.8	25.3	21.3
Persons who completed temporary jobs.....	9.0	8.5	10.8	7.9	9.3
Job leavers.....	9.2	9.7	7.6	9.5	7.9
Reentrants.....	35.0	34.2	36.7	35.8	38.2
New entrants.....	11.7	10.7	13.0	14.7	14.4

Note: Estimates for the above race groups (White, Black or African American, and Asian) do not sum to totals because data are not presented for all races. People whose ethnicity is identified as Hispanic or Latino may be of any race.

Source: Current Population Survey, U.S. Bureau of Labor Statistics.

LABOR FORCE CHARACTERISTICS BY RACE AND ETHNICITY, 2014

Table 15. People in the labor force and not in the labor force by selected characteristics, 2014 annual averages
(Numbers in thousands)

Age, gender, race, and Hispanic or Latino ethnicity	Civilian labor force ¹	Not in the labor force						Do not want a job now
		Total	Want a job					
			Total	Searched for work in previous year, but not in past 4 weeks				
				Total	Marginally attached (available to work now) ²			
Total	Total	Discouraged workers ³	Other ⁴					
Total								
Total, 16 years and older.....	155,922	92,025	6,323	2,875	2,207	739	1,468	85,702
16 to 24 years.....	21,295	17,418	2,041	969	666	184	482	15,377
25 to 54 years.....	100,767	23,744	2,669	1,332	1,048	350	697	21,075
55 years and older.....	33,860	50,863	1,614	574	493	205	289	49,250
Men, 16 years and older.....	82,882	36,865	2,934	1,409	1,139	443	696	33,932
16 to 24 years.....	11,009	8,507	1,060	520	373	116	257	7,447
25 to 54 years.....	53,925	7,224	1,108	609	515	213	302	6,116
55 years and older.....	17,948	21,135	767	281	251	114	137	20,368
Women, 16 years and older.....	73,039	55,159	3,389	1,465	1,068	296	772	51,770
16 to 24 years.....	10,286	8,911	981	449	294	68	226	7,930
25 to 54 years.....	46,842	16,520	1,561	723	532	137	395	14,959
55 years and older.....	15,912	29,729	847	293	242	91	152	28,882
White								
Total, 16 years and older.....	123,327	72,170	4,391	1,925	1,472	478	994	67,779
16 to 24 years.....	16,402	12,303	1,388	632	431	116	314	10,916
25 to 54 years.....	78,537	17,447	1,781	861	671	215	457	15,666
55 years and older.....	28,388	42,420	1,222	431	370	147	223	41,198
Men, 16 years and older.....	66,680	28,834	2,055	945	761	288	474	26,779
16 to 24 years.....	8,558	6,012	730	341	239	73	166	5,282
25 to 54 years.....	42,845	5,080	731	392	333	131	203	4,349
55 years and older.....	15,276	17,741	594	212	189	84	105	17,148
Women, 16 years and older.....	56,648	43,337	2,337	980	711	190	521	41,000
16 to 24 years.....	7,844	6,291	658	292	191	43	148	5,634
25 to 54 years.....	35,692	12,367	1,050	469	338	84	254	11,316
55 years and older.....	13,111	24,679	629	220	182	63	118	24,050
Black or African American								
Total, 16 years and older.....	18,873	11,970	1,234	619	504	194	310	10,736
16 to 24 years.....	2,986	2,982	431	230	170	54	115	2,551
25 to 54 years.....	12,712	3,575	538	299	255	105	150	3,037
55 years and older.....	3,175	5,413	266	90	80	35	44	5,147
Men, 16 years and older.....	8,909	5,089	563	299	256	115	141	4,525
16 to 24 years.....	1,461	1,460	217	120	95	35	60	1,243
25 to 54 years.....	5,975	1,426	236	136	124	63	61	1,190
55 years and older.....	1,473	2,202	110	42	38	18	20	2,092
Women, 16 years and older.....	9,964	6,881	671	320	248	79	169	6,210
16 to 24 years.....	1,525	1,522	214	110	75	19	55	1,308
25 to 54 years.....	6,737	2,149	302	163	131	42	90	1,847
55 years and older.....	1,702	3,211	155	47	42	18	24	3,056

See footnotes at end of table.

LABOR FORCE CHARACTERISTICS BY RACE AND ETHNICITY, 2014

Table 15. People in the labor force and not in the labor force by selected characteristics, 2014 annual averages
—Continued
 (Numbers in thousands)

Age, gender, race, and Hispanic or Latino ethnicity	Civilian labor force ¹	Not in the labor force						Do not want a job now
		Total	Want a job					
			Total	Searched for work in previous year, but not in past 4 weeks				
				Total	Marginally attached (available to work now) ²			
Total	Total	Discouraged workers ³	Other ⁴					
Asian								
Total, 16 years and older.....	8,760	5,024	373	177	116	40	76	4,652
16 to 24 years.....	836	1,207	95	44	22	5	17	1,112
25 to 54 years.....	6,270	1,731	204	99	66	20	46	1,527
55 years and older.....	1,654	2,086	74	34	27	14	13	2,012
Men, 16 years and older.....	4,648	1,771	168	91	62	23	39	1,603
16 to 24 years.....	441	583	50	28	15	4	11	532
25 to 54 years.....	3,342	401	80	47	32	13	19	321
55 years and older.....	865	787	38	17	16	7	9	749
Women, 16 years and older.....	4,112	3,253	204	86	53	16	37	3,049
16 to 24 years.....	395	624	44	17	8	2	6	580
25 to 54 years.....	2,927	1,330	124	52	34	7	27	1,206
55 years and older.....	789	1,299	36	17	12	7	5	1,263
Hispanic or Latino ethnicity								
Total, 16 years and older.....	25,370	13,030	1,177	498	384	120	264	11,853
16 to 24 years.....	4,424	3,880	437	188	132	36	96	3,443
25 to 54 years.....	17,895	4,744	564	249	198	59	139	4,181
55 years and older.....	3,051	4,406	176	60	53	25	28	4,229
Men, 16 years and older.....	14,651	4,593	507	231	189	71	118	4,087
16 to 24 years.....	2,446	1,816	218	99	74	22	51	1,597
25 to 54 years.....	10,476	1,087	204	102	88	35	54	883
55 years and older.....	1,728	1,691	85	31	27	14	13	1,607
Women, 16 years and older.....	10,720	8,437	670	267	194	49	145	7,767
16 to 24 years.....	1,978	2,065	219	90	59	14	45	1,846
25 to 54 years.....	7,418	3,658	360	147	110	24	85	3,298
55 years and older.....	1,323	2,714	92	30	26	11	15	2,623

¹ The sum of the employed plus the unemployed.

² People "marginally attached to the labor force" are those who want a job, have searched for work during the prior 12 months, and were available to take a job during the reference week, but had not looked for work in the past 4 weeks.

³ Discouraged workers are people marginally attached to the labor force who did not actively look for work in the prior 4 weeks for reasons such as thinks no work available, could not find work, lacks school or training, employer thinks too young or old, and other types of discrimination.

⁴ Includes those who did not actively look for work in the prior 4 weeks for such reasons as childcare and transportation problems, as well as a small number for which reason nonparticipation was not ascertained.

Note: Estimates for the above race groups (White, Black or African American, and Asian) do not sum to totals because data are not presented for all races. People whose ethnicity is identified as Hispanic or Latino may be of any race.

Source: Current Population Survey, U.S. Bureau of Labor Statistics.

LABOR FORCE CHARACTERISTICS BY RACE AND ETHNICITY, 2014

Table 16. Median usual weekly earnings of full-time wage and salary workers by gender, race, and Hispanic or Latino ethnicity, 1979–2014 annual averages

Years	Total	White	Black or African American	Asian	Hispanic or Latino ethnicity
	Total				
1979.....	\$241	\$248	\$199	—	\$194
1980.....	262	269	212	—	209
1981.....	284	291	235	—	223
1982.....	302	310	245	—	240
1983.....	313	320	261	—	250
1984.....	326	336	269	—	259
1985.....	344	356	277	—	270
1986.....	359	371	291	—	277
1987.....	374	384	301	—	285
1988.....	385	395	314	—	290
1989.....	399	409	319	—	298
1990.....	412	424	329	—	304
1991.....	426	442	348	—	312
1992.....	440	458	357	—	321
1993.....	459	475	369	—	331
1994.....	467	484	371	—	324
1995.....	479	494	383	—	329
1996.....	490	506	387	—	339
1997.....	503	519	400	—	351
1998.....	523	545	426	—	370
1999.....	549	573	445	—	385
2000.....	576	590	474	\$615	399
2001.....	596	610	491	639	417
2002.....	608	623	498	658	424
2003.....	620	636	514	693	440
2004.....	638	657	525	708	456
2005.....	651	672	520	753	471
2006.....	671	690	554	784	486
2007.....	695	716	569	830	503
2008.....	722	742	589	861	529
2009.....	739	757	601	880	541
2010.....	747	765	611	855	535
2011.....	756	775	615	866	549
2012.....	768	792	621	920	568
2013.....	776	802	629	942	578
2014.....	791	816	639	953	594

See note at end of table.

LABOR FORCE CHARACTERISTICS BY RACE AND ETHNICITY, 2014

Table 16. Median usual weekly earnings of full-time wage and salary workers by gender, race, and Hispanic or Latino ethnicity, 1979–2014 annual averages—Continued

Years	Total	White	Black or African American	Asian	Hispanic or Latino ethnicity
Men					
1979.....	\$292	\$298	\$227	—	\$219
1980.....	313	320	244	—	234
1981.....	340	350	268	—	251
1982.....	364	375	278	—	269
1983.....	379	387	294	—	274
1984.....	392	401	303	—	287
1985.....	407	418	305	—	296
1986.....	419	433	319	—	299
1987.....	434	450	327	—	306
1988.....	449	465	348	—	308
1989.....	468	482	348	—	315
1990.....	481	494	361	—	318
1991.....	493	506	375	—	323
1992.....	501	514	380	—	339
1993.....	510	524	392	—	346
1994.....	522	547	400	—	343
1995.....	538	566	411	—	350
1996.....	557	580	412	—	356
1997.....	579	595	432	—	371
1998.....	598	615	468	—	390
1999.....	618	638	488	—	406
2000.....	641	662	510	\$685	417
2001.....	670	689	529	732	440
2002.....	679	702	524	756	451
2003.....	695	715	555	772	464
2004.....	713	732	569	802	480
2005.....	722	743	559	825	489
2006.....	743	761	591	882	505
2007.....	766	788	600	936	520
2008.....	798	825	620	966	559
2009.....	819	845	621	952	569
2010.....	824	850	633	936	560
2011.....	832	856	653	970	571
2012.....	854	879	665	1,055	592
2013.....	860	884	664	1,059	594
2014.....	871	897	680	1,080	616

See note at end of table.

LABOR FORCE CHARACTERISTICS BY RACE AND ETHNICITY, 2014

Table 16. Median usual weekly earnings of full-time wage and salary workers by gender, race, and Hispanic or Latino ethnicity, 1979–2014 annual averages—Continued

Years	Total	White	Black or African American	Asian	Hispanic or Latino ethnicity
Women					
1979.....	\$182	\$184	\$169	—	\$157
1980.....	201	203	185	—	172
1981.....	219	221	206	—	190
1982.....	239	242	217	—	203
1983.....	252	254	232	—	215
1984.....	265	268	241	—	223
1985.....	277	281	252	—	230
1986.....	291	294	264	—	241
1987.....	303	307	276	—	251
1988.....	315	318	288	—	260
1989.....	328	334	301	—	269
1990.....	346	353	308	—	278
1991.....	366	373	323	—	292
1992.....	380	387	335	—	302
1993.....	393	401	348	—	313
1994.....	399	408	346	—	305
1995.....	406	415	355	—	305
1996.....	418	428	362	—	316
1997.....	431	444	375	—	318
1998.....	456	468	400	—	337
1999.....	473	483	409	—	348
2000.....	493	502	429	\$547	366
2001.....	512	522	454	563	388
2002.....	529	547	473	566	397
2003.....	552	567	491	598	410
2004.....	573	584	505	613	419
2005.....	585	596	499	665	429
2006.....	600	609	519	699	440
2007.....	614	626	533	731	473
2008.....	638	654	554	753	501
2009.....	657	669	582	779	509
2010.....	669	684	592	773	508
2011.....	684	703	595	751	518
2012.....	691	710	599	770	521
2013.....	706	722	606	819	541
2014.....	719	734	611	841	548

See note at end of table.

LABOR FORCE CHARACTERISTICS BY RACE AND ETHNICITY, 2014

Table 16. Median usual weekly earnings of full-time wage and salary workers by gender, race, and Hispanic or Latino ethnicity, 1979–2014 annual averages—Continued

Years	Total	White	Black or African American	Asian	Hispanic or Latino ethnicity
Women's earnings as a percent of men's					
1979.....	62.3	61.7	74.4	—	71.7
1980.....	64.2	63.4	75.8	—	73.5
1981.....	64.4	63.1	76.9	—	75.7
1982.....	65.7	64.5	78.1	—	75.5
1983.....	66.5	65.6	78.9	—	78.5
1984.....	67.6	66.8	79.5	—	77.7
1985.....	68.1	67.2	82.6	—	77.7
1986.....	69.5	67.9	82.8	—	80.6
1987.....	69.8	68.2	84.4	—	82.0
1988.....	70.2	68.4	82.8	—	84.4
1989.....	70.1	69.3	86.5	—	85.4
1990.....	71.9	71.5	85.3	—	87.4
1991.....	74.2	73.7	86.1	—	90.4
1992.....	75.8	75.3	88.2	—	89.1
1993.....	77.1	76.5	88.8	—	90.5
1994.....	76.4	74.6	86.5	—	88.9
1995.....	75.5	73.3	86.4	—	87.1
1996.....	75.0	73.8	87.9	—	88.8
1997.....	74.4	74.6	86.8	—	85.7
1998.....	76.3	76.1	85.5	—	86.4
1999.....	76.5	75.7	83.8	—	85.7
2000.....	76.9	75.8	84.1	79.9	87.8
2001.....	76.4	75.8	85.8	76.9	88.2
2002.....	77.9	77.9	90.3	74.9	88.0
2003.....	79.4	79.3	88.5	77.5	88.4
2004.....	80.4	79.8	88.8	76.4	87.3
2005.....	81.0	80.2	89.3	80.6	87.7
2006.....	80.8	80.0	87.8	79.3	87.1
2007.....	80.2	79.4	88.8	78.1	91.0
2008.....	79.9	79.3	89.4	78.0	89.6
2009.....	80.2	79.2	93.7	81.8	89.5
2010.....	81.2	80.5	93.5	82.6	90.7
2011.....	82.2	82.1	91.1	77.4	90.7
2012.....	80.9	80.8	90.1	73.0	88.0
2013.....	82.1	81.7	91.3	77.3	91.1
2014.....	82.5	81.8	89.9	77.9	89.0

Note: Beginning in 2003, estimates for White, Black or African American, and Asian race groups include people who selected that race group only; persons who selected more than one race group are not included in these groups. Prior to 2003, people who reported more than one race were included in the group they identified as the main race. Asian estimates for 2000–2002 are for Asians and Pacific Islanders; beginning in 2003, Asian is a separate category. People whose ethnicity is identified as Hispanic or Latino may be of any race. Dash indicates data not available.

Source: Current Population Survey, U.S. Bureau of Labor Statistics.

Table 17. Median usual weekly earnings of full-time wage and salary workers by educational attainment, gender, race, and Hispanic or Latino ethnicity, 2014 annual averages

Educational attainment and gender	Total	White	Black or African American	Asian	Hispanic or Latino ethnicity
Total, 25 years and older.....	\$839	\$864	\$674	\$991	\$619
Less than a high school diploma.....	488	493	440	477	466
High school graduates, no college ¹	668	696	579	604	595
Some college, no degree.....	741	771	620	717	675
Associate's degree.....	792	817	677	798	714
Bachelor's degree and higher ²	1,193	1,219	970	1,328	1,007
Men, 25 years and older.....	922	950	719	1,128	652
Less than a high school diploma.....	517	522	476	493	497
High school graduates, no college ¹	751	777	630	664	637
Some college, no degree.....	846	891	680	743	756
Associate's degree.....	911	938	743	857	825
Bachelor's degree and higher ²	1,385	1,416	1,027	1,472	1,161
Women, 25 years and older.....	752	767	633	877	581
Less than a high school diploma.....	409	406	413	450	390
High school graduates, no college ¹	578	591	509	543	517
Some college, no degree.....	631	651	584	670	598
Associate's degree.....	701	717	629	749	617
Bachelor's degree and higher ²	1,049	1,059	942	1,140	907

¹ Includes people with a high school diploma or equivalent.

² Includes people with bachelor's, master's, professional, and doctoral degrees.

Note: People whose ethnicity is identified as Hispanic or Latino may be of any race.

Source: Current Population Survey, U.S. Bureau of Labor Statistics.

LABOR FORCE CHARACTERISTICS BY RACE AND ETHNICITY, 2014

Table 18. Median usual weekly earnings of full-time wage and salary workers by occupation, gender, race, and Hispanic or Latino ethnicity, 2014 annual averages

Occupation and gender	Total	White	Black or African American	Asian	Hispanic or Latino ethnicity
Total, 16 years and older.....	\$791	\$816	\$639	\$953	\$594
Management, professional, and related occupations.....	1,137	1,146	903	1,365	937
Management, business, and financial operations occupations.....	1,227	1,244	973	1,402	943
Management occupations.....	1,295	1,324	1,026	1,539	978
Business and financial operations occupations.....	1,107	1,125	922	1,219	870
Professional and related occupations.....	1,078	1,085	868	1,351	933
Computer and mathematical occupations.....	1,368	1,352	1,000	1,556	1,173
Architecture and engineering occupations.....	1,377	1,374	1,199	1,454	1,228
Life, physical, and social science occupations.....	1,168	1,165	931	1,337	1,019
Community and social services occupations.....	858	887	749	867	807
Legal occupations.....	1,271	1,330	1,029	1,557	1,039
Education, training, and library occupations.....	953	966	851	1,042	860
Arts, design, entertainment, sports, and media occupations.....	956	965	938	940	928
Healthcare practitioner and technical occupations.....	1,033	1,050	824	1,239	926
Service occupations.....	505	512	483	511	454
Healthcare support occupations.....	498	504	480	517	489
Protective service occupations.....	833	889	672	748	769
Food preparation and serving related occupations.....	439	438	416	503	417
Building and grounds cleaning and maintenance occupations.....	480	486	446	486	419
Personal care and service occupations.....	487	485	484	502	476
Sales and office occupations.....	666	680	593	731	580
Sales and related occupations.....	705	742	543	702	548
Office and administrative support occupations.....	651	653	613	743	590
Natural resources, construction, and maintenance occupations.....	756	765	658	857	584
Farming, fishing, and forestry occupations.....	429	427	456	498	394
Construction and extraction occupations.....	756	764	632	856	599
Installation, maintenance, and repair occupations.....	821	830	720	877	679
Production, transportation, and material-moving occupations.....	642	663	597	594	540
Production occupations.....	646	668	593	585	528
Transportation and material-moving occupations.....	637	657	601	617	550

See note at end of table.

LABOR FORCE CHARACTERISTICS BY RACE AND ETHNICITY, 2014

Table 18. Median usual weekly earnings of full-time wage and salary workers by occupation, gender, race, and Hispanic or Latino ethnicity, 2014 annual averages—Continued

Occupation and gender	Total	White	Black or African American	Asian	Hispanic or Latino ethnicity
Men, 16 years and older.....	\$871	\$897	\$680	\$1,080	\$616
Management, professional, and related occupations.....	1,346	1,356	1,012	1,516	1,107
Management, business, and financial operations occupations.....	1,416	1,438	1,029	1,609	1,063
Management occupations.....	1,454	1,472	1,099	1,746	1,102
Business and financial operations occupations.....	1,310	1,337	966	1,427	1,003
Professional and related occupations.....	1,286	1,292	1,001	1,481	1,129
Computer and mathematical occupations.....	1,435	1,412	1,148	1,651	1,216
Architecture and engineering occupations.....	1,413	1,416	1,233	1,469	1,266
Life, physical, and social science occupations.....	1,247	1,245	1,079	1,415	1,091
Community and social services occupations.....	934	962	754	946	830
Legal occupations.....	1,765	1,751	1,666	1,983	1,530
Education, training, and library occupations.....	1,141	1,159	948	1,250	1,066
Arts, design, entertainment, sports, and media occupations.....	1,024	1,045	899	979	1,015
Healthcare practitioner and technical occupations.....	1,256	1,281	981	1,347	1,049
Service occupations.....	583	594	528	592	489
Healthcare support occupations.....	560	590	497	591	504
Protective service occupations.....	886	940	732	828	821
Food preparation and serving related occupations.....	463	467	413	544	441
Building and grounds cleaning and maintenance occupations.....	517	523	473	511	458
Personal care and service occupations.....	607	605	562	726	577
Sales and office occupations.....	766	802	602	754	620
Sales and related occupations.....	841	887	607	742	660
Office and administrative support occupations.....	701	718	595	763	594
Natural resources, construction, and maintenance occupations.....	764	772	671	860	594
Farming, fishing, and forestry occupations.....	457	459	474	622	408
Construction and extraction occupations.....	757	766	633	858	600
Installation, maintenance, and repair occupations.....	824	833	727	873	682
Production, transportation, and material moving occupations.....	689	707	624	627	589
Production occupations.....	711	730	648	617	599
Transportation and material moving occupations.....	664	684	614	641	580

See note at end of table.

LABOR FORCE CHARACTERISTICS BY RACE AND ETHNICITY, 2014

Table 18. Median usual weekly earnings of full-time wage and salary workers by occupation, gender, race, and Hispanic or Latino ethnicity, 2014 annual averages—Continued

Occupation and gender	Total	White	Black or African American	Asian	Hispanic or Latino ethnicity
Women, 16 years and older.....	\$719	\$734	\$611	\$841	\$548
Management, professional, and related occupations.....	981	989	852	1,165	843
Management, business, and financial operations occupations.....	1,056	1,063	940	1,168	851
Management occupations.....	1,127	1,132	991	1,268	874
Business and financial operations occupations.....	982	987	866	1,118	832
Professional and related occupations.....	948	955	820	1,164	839
Computer and mathematical occupations.....	1,165	1,158	895	1,364	1,001
Architecture and engineering occupations.....	1,158	1,153	917	1,411	992
Life, physical, and social science occupations.....	1,062	1,058	742	1,165	997
Community and social services occupations.....	824	847	746	838	799
Legal occupations.....	1,001	1,004	972	1,176	861
Education, training, and library occupations.....	897	909	824	910	808
Arts, design, entertainment, sports, and media occupations.....	870	863	954	874	687
Healthcare practitioner and technical occupations.....	983	997	809	1,168	875
Service occupations.....	461	458	465	479	416
Healthcare support occupations.....	492	496	478	507	488
Protective service occupations.....	617	660	566	585	578
Food preparation and serving related occupations.....	419	418	418	466	393
Building and grounds cleaning and maintenance occupations.....	413	410	412	449	387
Personal care and service occupations.....	455	454	469	446	441
Sales and office occupations.....	620	623	589	694	550
Sales and related occupations.....	570	584	482	646	463
Office and administrative support occupations.....	637	637	619	727	588
Natural resources, construction, and maintenance occupations.....	509	511	502	524	392
Farming, fishing, and forestry occupations.....	375	377	373	369	363
Construction and extraction occupations.....	691	701	630	800	485
Installation, maintenance, and repair occupations.....	725	744	524	922	538
Production, transportation, and material-moving occupations.....	504	505	495	520	417
Production occupations.....	502	499	499	526	425
Transportation and material-moving occupations.....	510	525	472	474	397

Note: People whose ethnicity is identified as Hispanic or Latino may be of any race.
 Source: Current Population Survey, U.S. Bureau of Labor Statistics.



Technical Notes

The estimates in this report were obtained from the Current Population Survey (CPS), a national monthly sample survey of approximately 60,000 eligible households that provides a wide range of information on the labor force, employment, and unemployment. Earnings data are collected from one-fourth of the CPS monthly sample. The survey is conducted for the U.S. Bureau of Labor Statistics (BLS) by the U.S. Census Bureau using a scientifically selected national sample with coverage in all 50 states and the District of Columbia.

Material in this report is in the public domain and may be reproduced without permission. This information is available to sensory-impaired individuals upon request. Voice phone: (202) 691-5200; Federal Relay Service: (800) 877-8339.

Concepts and definitions

Civilian noninstitutional population. Included are people 16 years of age and older residing in the 50 states and the District of Columbia who are not confined to institutions, such as nursing homes and prisons, and who are not on active duty in the Armed Forces.

Employed. Employed people are all those who, during the survey reference week (which is generally the week including the 12th day of the month), (a) did any work at all as paid employees; (b) worked in their own business or profession or on their own farm; (c) worked 15 hours or more as unpaid workers in a family member's business. People who were temporarily absent from their jobs or businesses because of illness, vacation, labor dispute, or another reason also are counted as employed.

Unemployed. The unemployed are people who had no employment during the reference week, were available for work (except for temporary illness), and had made specific efforts to find employment sometime during the 4-week period ending with the reference week. People who were waiting to be recalled to a job from which they had

been laid off need not have been looking for work to be classified as unemployed.

Duration of unemployment. This represents the length of time (through the reference week) that people classified as unemployed had been looking for work. For people on layoff, duration of unemployment represents the number of full weeks they had been on layoff. Mean duration is the arithmetic average computed from single weeks of unemployment; median duration is the midpoint of a distribution of weeks of unemployment.

Reason for unemployment. Unemployment also is categorized according to the status of individuals at the time they began to look for work. The reasons for unemployment are divided into four major groups:

1. Job losers, comprising (a) people on temporary layoff, who have been given a date to return to work or who expect to return within 6 months (people on layoff need not be looking for work to qualify as unemployed), (b) permanent job losers, whose employment ended involuntarily and who began looking for work, and (c) people who completed temporary jobs, who began looking for work after the jobs ended.
2. Job leavers, people who quit or otherwise terminated their employment voluntarily and immediately began looking for work.
3. Reentrants, people who previously worked but who were out of the labor force prior to beginning their job search.
4. New entrants, people who had never worked.

Civilian labor force. This group comprises all people classified as employed or unemployed in accordance with the criteria described above.

Unemployment rate. This rate is the number unemployed as a percent of the civilian labor force.

Labor force participation rate. This rate is the labor force as a percent of the population.

Employment–population ratio. This ratio is the number of employed as a percentage of the population.

Not in the labor force. Included in this group are all people in the civilian noninstitutional population who are neither employed nor unemployed. People marginally attached to the labor force are those individuals who are not in the labor force who wanted and were available for work and had looked for a job sometime in the prior 12 months (or since the end of their last job if they held one within the past 12 months). They were not counted as unemployed because they had not searched for work in the 4 weeks preceding the survey. Discouraged workers, a subset of the marginally attached, were not looking for work because they believed no jobs were available for them.

Occupation and industry. This information applies to the job held during the reference week. People with two or more jobs are classified in the occupation and industry in which they worked the greatest number of hours. The occupational and industry classification of CPS data is based on the 2010 Census occupational classification system and the 2012 Census industrial classification system, which are derived from the 2010 Standard Occupation Classification (SOC) and the 2012 North American Industry Classification (NAICS). Additional information about these classifications is available online at www.bls.gov/cps/cpsoccind.htm.

White, Black or African American, Asian, American Indian and Alaska Native, and Native Hawaiian and Other Pacific Islander. In accordance with the Office of Management and Budget guidelines, these terms are used to describe the race of people. Beginning in 2003, people in these categories are those who selected that race group only. Those who identify multiple race groups are categorized as people of Two or More Races. (Previously, people identified a group as their main race.) People who identified themselves as Asian are further classified as Asian Indian, Chinese, Filipino, Japanese, Korean, Vietnamese, or Other Asian. The Other Asian category includes individuals of group not listed—such as Pakistani, Hmong, and Cambodian—and those who reported two or more Asian groups. Estimates for American Indians and Alaska Natives, Native

Hawaiians and Other Pacific Islanders, and people of Two or More Races are not shown separately in all tables because the number of survey respondents is too small to develop estimates of sufficient quality. In the enumeration process, race is determined by the household respondent. More information on the 2003 changes to questions on race and Hispanic ethnicity is available on the BLS website at www.bls.gov/cps/rvcps03.pdf.

Hispanic or Latino ethnicity. This refers to people who identified themselves in the enumeration process as being of Hispanic, Latino or Spanish origin. These individuals are further classified by detailed Hispanic ethnicity. Previous versions of this report presented data for the following detailed Hispanic ethnicity categories: Mexican, Puerto Rican, Cuban, Central and South American, or Other Hispanic or Latino. The latter two categories were expanded in 2014 into additional categories: Central American, which includes the two subcategories of Salvadoran and Other Central American (excluding Salvadorans); South American; and Other Hispanic or Latino, which includes the two subcategories of Dominican and Other Hispanic or Latino (excluding Dominicans). People whose ethnicity is identified as Hispanic or Latino may be of any race. More information on the 2003 changes in questions on race and Hispanic ethnicity is available online at www.bls.gov/cps/rvcps03.pdf.

Usual weekly earnings. Data represent earnings before taxes and other deductions, and include any overtime pay, commissions, or tips usually received (at the main job, in the case of multiple jobholders). Earnings reported on a basis other than weekly (for example, annual, monthly, or hourly) are converted to weekly. The term “usual” is as perceived by the respondent. If the respondent asks for a definition of usual, interviewers are instructed to define the term as more than half the weeks worked during the past 4 or 5 months. Data refer to the sole or primary job of wage and salary workers (excluding all self-employed people, regardless of whether their businesses were incorporated).

Median earnings. These figures indicate the value that divides the earnings distribution into two equal parts, one part having values above the median and the other having

values below the median. The medians shown in this publication are calculated by linear interpolation of the \$50 centered interval within which each median falls.

Family. A family is defined as a group of two or more people residing together who are related by birth, marriage, or adoption; all such people are considered as members of one family. Families are classified either as married-couple families or as families maintained by women or men without spouses.

Children. Data on children refer to one's own children under age 18 who live in the household. Included are sons, daughters, stepchildren, and adopted children. Not included are nieces, nephews, grandchildren, other related children, and all unrelated children living in the household.

Reliability of the estimates

Statistics based on the CPS are subject to both sampling and nonsampling error. When a sample, rather than an entire population, is surveyed, there is a chance that the sample estimates may differ from the true population

values they represent. The component of this difference that occurs because samples differ by chance is known as sampling error, and its variability is measured by the standard error of the estimate. There is about a 90 percent chance, or level of confidence, that an estimate based on a sample will differ by no more than 1.6 standard errors from the true population value because of sampling error. BLS analyses are generally conducted at the 90 percent level of confidence.

All other types of error are referred to as nonsampling error. Nonsampling error can occur for many reasons, including the failure to sample a segment of the population, inability to obtain information for all respondents in the sample, inability or unwillingness of respondents to provide correct information, and errors made in the collection or processing of data.

A more detailed discussion of the reliability of data from the CPS and information on estimating standard errors is available online at

www.bls.gov/cps/documentation.htm#reliability.