



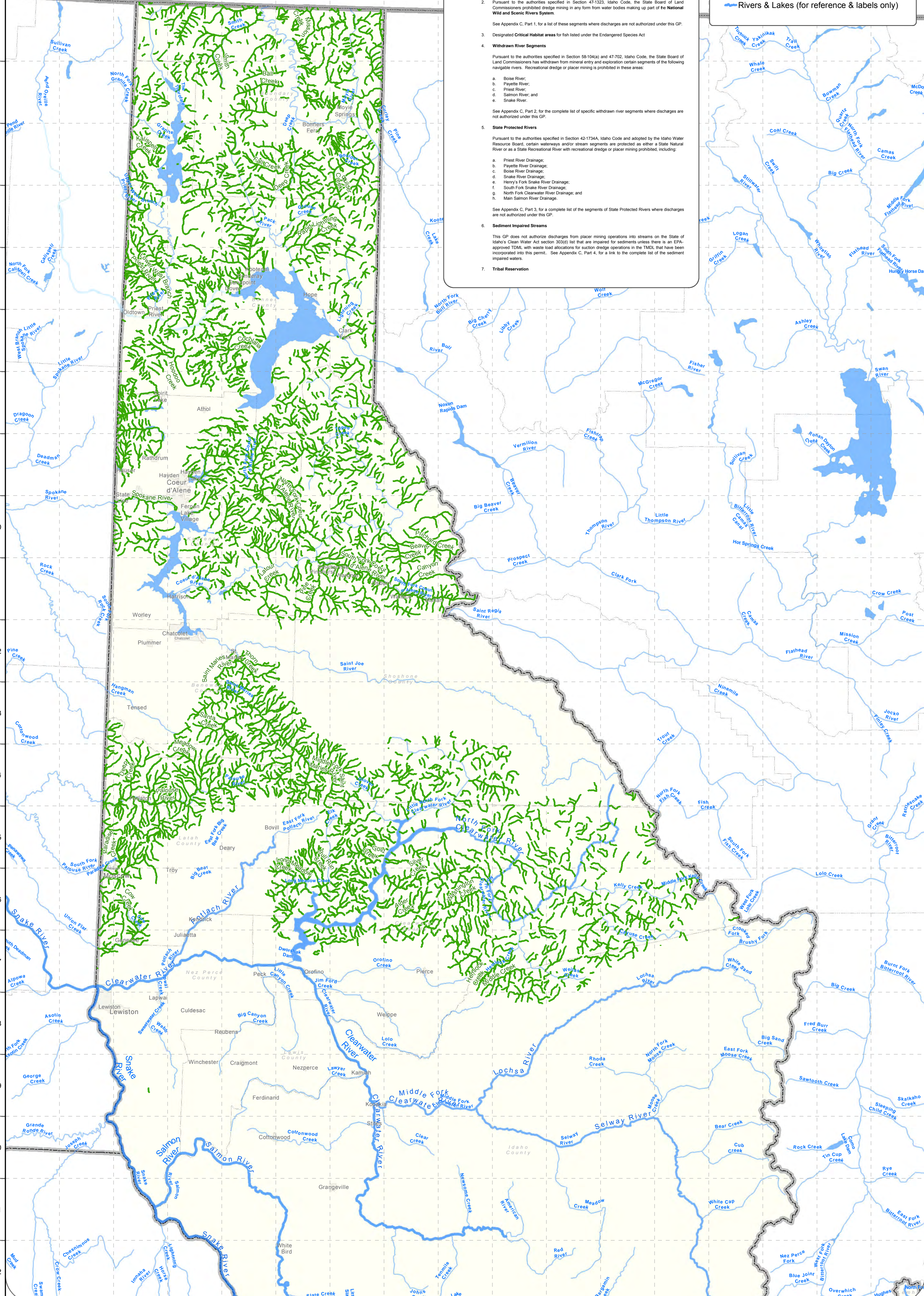
# Northwest Idaho Map

## Prohibitions

- This GP does not apply to facilities that are proposed to be located in National Parks System Units (i.e., Parks and Preserves), National Monuments, National Sanctuaries, National Wildlife Refuges, National Conservation Areas, or National Wilderness Areas.
- Pursuant to the authorities specified in Section 47-1323, Idaho Code, the State Board of Land Commissioners prohibited dredge mining in any form from water bodies making up part of the National Wild and Scenic Rivers System.  
See Appendix C, Part 1, for a list of these segments where discharges are not authorized under this GP.
- Designated Critical Habitat areas for fish listed under the Endangered Species Act.
- Withdrawn River Segments**  
Pursuant to the authorities specified in Section 59-104(a) and 47-702, Idaho Code, the State Board of Land Commissioners has withdrawn from mineral entry and exploration certain segments of the following navigable rivers. Recreational dredge or placer mining is prohibited in these areas:
  - Boise River;
  - Payette River;
  - Priest River;
  - Snake River; and
  - Snake River.
 See Appendix C, Part 2, for the complete list of specific withdrawn river segments where discharges are not authorized under this GP.
- State Protected Rivers**  
Pursuant to the authorities specified in Section 42-1734A, Idaho Code and adopted by the Idaho Water Resource Board, certain waterways and/or stream segments are protected as either a State Natural River or as a State Recreational River with recreational dredge or placer mining prohibited, including:
  - Priest River Drainage;
  - Payette River Drainage;
  - Boise River Drainage;
  - Snake River Drainage;
  - Henry's Fork Snake River Drainage;
  - South Fork Snake River Drainage;
  - North Fork Clearwater River Drainage; and
  - Main Salmon River Drainage.
 See Appendix C, Part 3, for a complete list of the segments of State Protected Rivers where discharges are not authorized under this GP.
- Sediment Impaired Streams**  
This GP does not authorize discharges from placer mining operations into streams on the State of Idaho's Clean Water Act section 303(d) list that are impaired for sediments unless there is an EPA-approved TMDL with waste load allocations for suction dredge operations in the TMDL that have been incorporated into this permit. See Appendix C, Part 4, for a link to the complete list of the sediment impaired waters.
- Tribal Reservation**

## Legend

-  Small Suction Dredge Mining Allowed
-  Rivers & Lakes (for reference & labels only)



The U.S. Environmental Protection Agency (EPA) has compiled this computer representation from data or information sources that may not have been verified by the EPA. This data is offered here as a general representation only, and is not to be re-used without verification by an independent professional qualified to verify such data or information. The EPA does not guarantee the accuracy, completeness, or timeliness of the information shown, and shall not be liable for any loss or injury resulting from reliance upon the information shown.

## Small Suction Dredge Mining Allowed - Idaho (From Draft General Permit IDG-37-0000 Section 1 Letter D)



0 2.5 5 10 15 20 25 Miles

TS 4/1/13

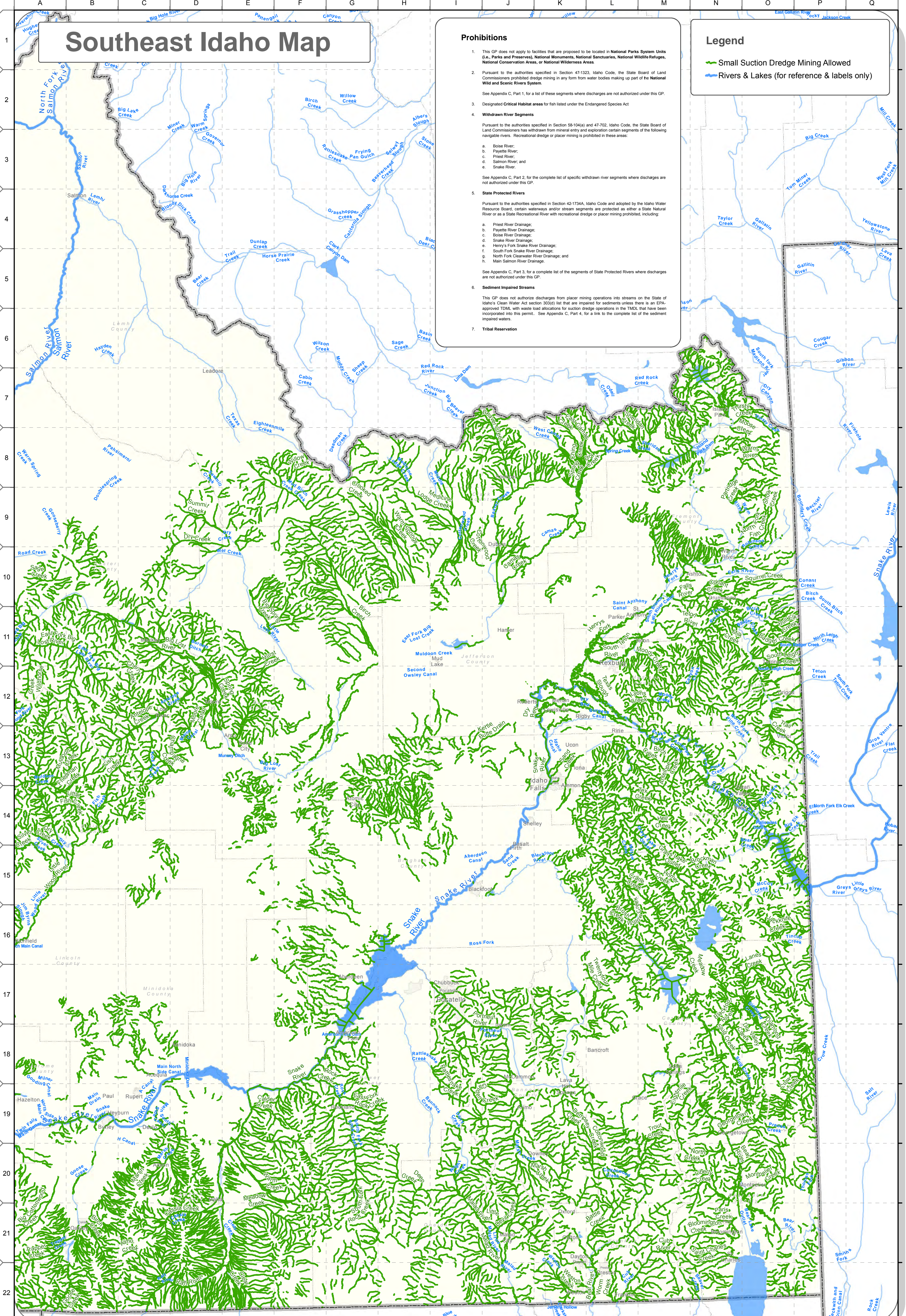
# Southeast Idaho Map

## Prohibitions

- This GP does not apply to facilities that are proposed to be located in National Parks System Units (i.e., Parks and Preserves), National Monuments, National Sanctuaries, National Wildlife Refuges, National Conservation Areas, or National Wilderness Areas.
- Pursuant to the authorities specified in Section 47-1323, Idaho Code, the State Board of Land Commissioners prohibited dredge mining in any form from water bodies making up part of the National Wild and Scenic Rivers System.  
See Appendix C, Part 1, for a list of these segments where discharges are not authorized under this GP.
- Designated Critical Habitat areas for fish listed under the Endangered Species Act.
- Withdrawn River Segments  
Pursuant to the authorities specified in Section 58-104(a) and 47-702, Idaho Code, the State Board of Land Commissioners has withdrawn from mineral entry and exploration certain segments of the following navigable rivers. Recreational dredge or placer mining is prohibited in these areas:
  - Boise River;
  - Payette River;
  - Priest River;
  - Snake River; and
  - Snake River.
 See Appendix C, Part 2, for the complete list of specific withdrawn river segments where discharges are not authorized under this GP.
- State Protected Rivers  
Pursuant to the authorities specified in Section 42-1734A, Idaho Code and adopted by the Idaho Water Resource Board, certain waterways and/or stream segments are protected as either a State Natural River or as a State Recreational River with recreational dredge or placer mining prohibited, including:
  - Priest River Drainage;
  - Payette River Drainage;
  - Boise River Drainage;
  - Snake River Drainage;
  - Henry's Fork Snake River Drainage;
  - South Fork Snake River Drainage;
  - North Fork Clearwater River Drainage; and
  - Main Salmon River Drainage.
 See Appendix C, Part 3, for a complete list of the segments of State Protected Rivers where discharges are not authorized under this GP.
- Sediment Impaired Streams  
This GP does not authorize discharges from placer mining operations into streams on the State of Idaho's Clean Water Act section 303(d) list that are impaired for sediments unless there is an EPA-approved TMDL with waste load allocations for suction dredge operations in the TMDL that have been incorporated into this permit. See Appendix C, Part 4, for a link to the complete list of the sediment impaired waters.
- Tribal Reservation

## Legend

- Small Suction Dredge Mining Allowed
- Rivers & Lakes (for reference & labels only)



The U.S. Environmental Protection Agency (EPA) has compiled this computer representation from data or information sources that may not have been verified by the EPA. This data is offered here as a general representation only, and is not to be re-used without verification by an independent professional qualified to verify such data or information. The EPA does not guarantee the accuracy, completeness, or timeliness of the information shown, and shall not be liable for any loss or injury resulting from reliance upon the information shown.

## Small Suction Dredge Mining Allowed - Idaho

(From Draft General Permit IDG-37-0000  
Section 1 Letter D)



0 2.5 5 10 15 20 25 Miles

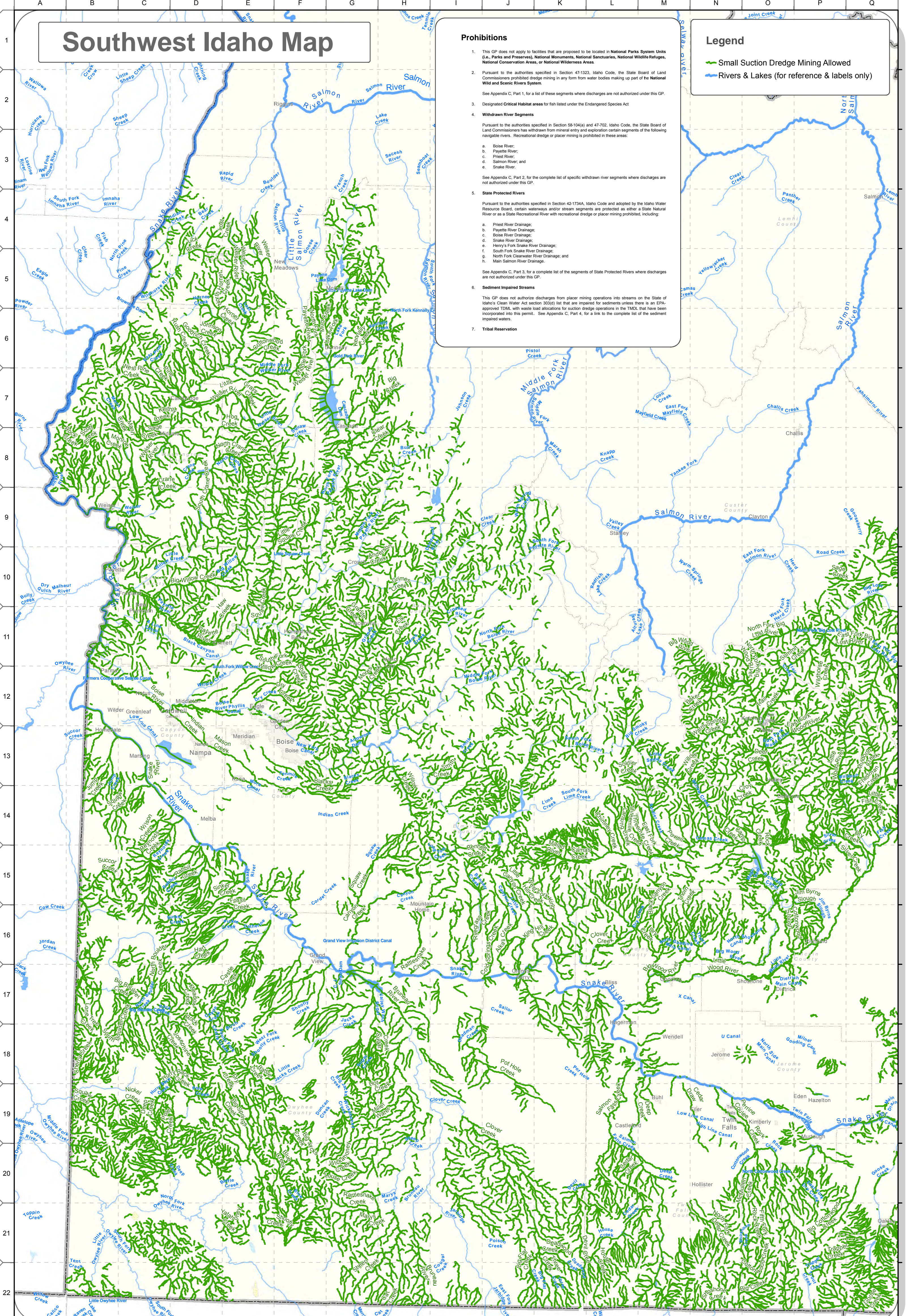
# Southwest Idaho Map

## Prohibitions

- This GP does not apply to facilities that are proposed to be located in National Parks System Units (i.e., Parks and Preserves), National Monuments, National Sanctuaries, National Wildlife Refuges, National Conservation Areas, or National Wilderness Areas.
- Pursuant to the authorities specified in Section 47-1323, Idaho Code, the State Board of Land Commissioners prohibited dredge mining in any form from water bodies making up part of the National Wild and Scenic Rivers System.  
See Appendix C, Part 1, for a list of these segments where discharges are not authorized under this GP.
- Designated Critical Habitat areas for fish listed under the Endangered Species Act.
- Withdrawn River Segments  
Pursuant to the authorities specified in Section 59-104(a) and 47-702, Idaho Code, the State Board of Land Commissioners has withdrawn from mineral entry and exploration certain segments of the following navigable rivers. Recreational dredge or placer mining is prohibited in these areas:
  - Boise River;
  - Payette River;
  - Priest River;
  - Snake River; and
  - Snake River.
 See Appendix C, Part 2, for the complete list of specific withdrawn river segments where discharges are not authorized under this GP.
- State Protected Rivers  
Pursuant to the authorities specified in Section 42-1734A, Idaho Code and adopted by the Idaho Water Resource Board, certain waterways and/or stream segments are protected as either a State Natural River or as a State Recreational River with recreational dredge or placer mining prohibited, including:
  - Priest River Drainage;
  - Payette River Drainage;
  - Boise River Drainage;
  - Snake River Drainage;
  - Henry's Fork Snake River Drainage;
  - South Fork Snake River Drainage;
  - North Fork Clearwater River Drainage; and
  - Main Salmon River Drainage.
 See Appendix C, Part 3, for a complete list of the segments of State Protected Rivers where discharges are not authorized under this GP.
- Sediment Impaired Streams  
This GP does not authorize discharges from placer mining operations into streams on the State of Idaho's Clean Water Act section 303(d) list that are impaired for sediments unless there is an EPA-approved TMDL with waste load allocations for suction dredge operations in the TMDL that have been incorporated into this permit. See Appendix C, Part 4, for a link to the complete list of the sediment impaired waters.
- Tribal Reservation

## Legend

- Small Suction Dredge Mining Allowed
- Rivers & Lakes (for reference & labels only)



The U.S. Environmental Protection Agency (EPA) has compiled this computer representation from data or information sources that may not have been verified by the EPA. This data is offered here as a general representation only, and is not to be re-used without verification by an independent professional qualified to verify such data or information. The EPA does not guarantee the accuracy, completeness, or timeliness of the information shown, and shall not be liable for any loss or injury resulting from reliance upon the information shown.

## Small Suction Dredge Mining Allowed - Idaho

(From Draft General Permit IDG-37-0000

Section 1 Letter D)



0 2.5 5 10 15 20 25 Miles

TS 4/1/13